

Synergy Resources

Well Name: **SRC Phelps 12-32NHZ**

Surface Location: SRC Phelps 11-32CHZ Pad Sec.32-T1N-R66W
North American Datum 1983 , US State Plane 1983 , Colorado Northern Zone

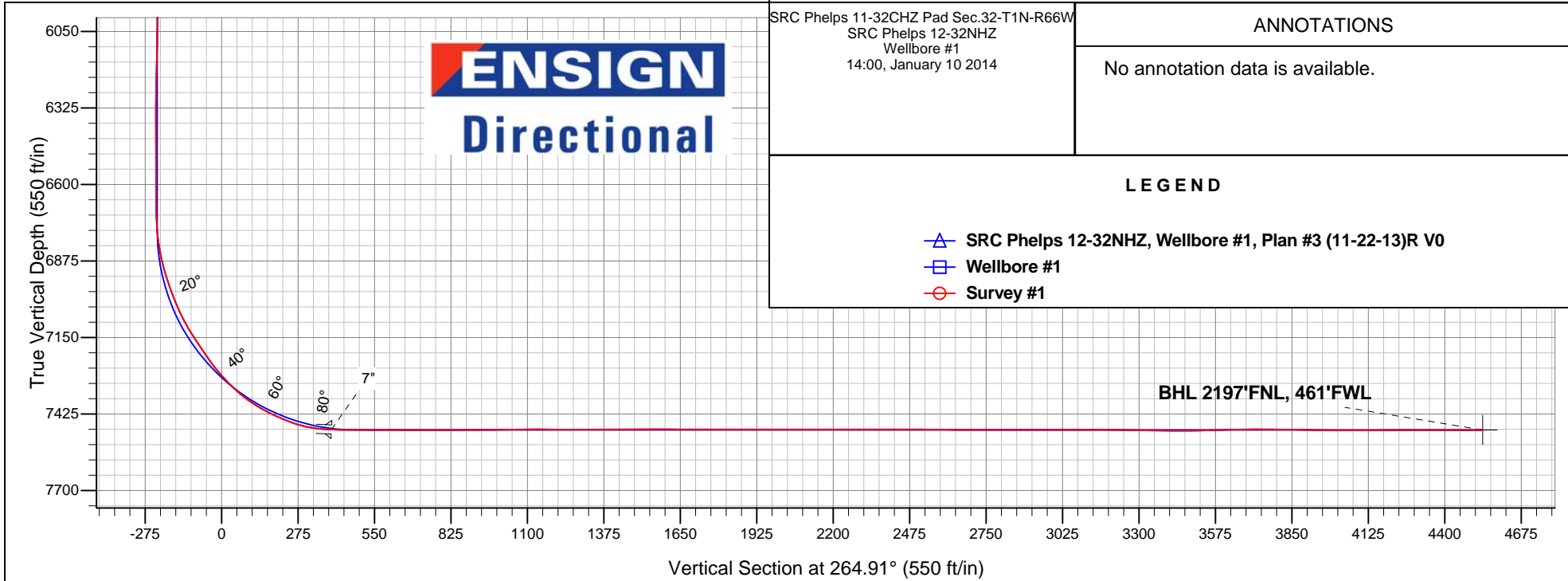
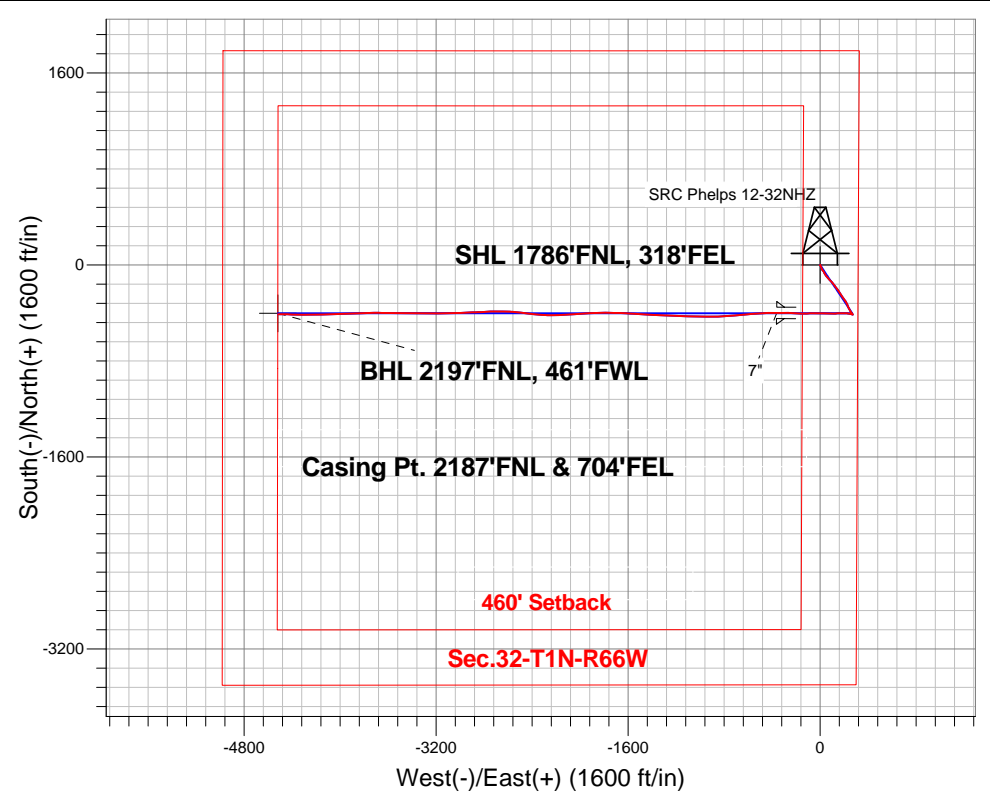
Ground Elevation: 5018.0

+N/-S	+E/-W	Northing	Easting	Latitude	Longitude	Slot
0.0	0.0	1247295.93	3198146.56	40.010044	-104.792610	

Ensign Rig #17 - RKB - 12' WELL @ 5030.0ft (Ensign Rig #17 - RKB - 12')

FINAL SURVEY

Projected Bottom Hole Location
11985'MD 7483'TVD 412'S & 4517'W of SHL
89.9 degree Incl @ 269.9 degree AZM



SRC Phelps 11-32CHZ Pad Sec.32-T1N-R66W
SRC Phelps 12-32NHZ
Wellbore #1
14:00, January 10 2014

ANNOTATIONS

No annotation data is available.

LEGEND

- △ SRC Phelps 12-32NHZ, Wellbore #1, Plan #3 (11-22-13)R V0
- Wellbore #1
- Survey #1



Synergy Resources

SEC.32-T1N-R66W

SRC Phelps 11-32CHZ Pad Sec.32-T1N-R66W

SRC Phelps 12-32NHZ

Wellbore #1

Survey: Survey #1

Standard Survey Report

10 January, 2014

Company:	Synergy Resources	Local Co-ordinate Reference:	Well SRC Phelps 12-32NHZ
Project:	SEC.32-T1N-R66W	TVD Reference:	WELL @ 5030.0ft (Ensign Rig #17 - RKB - 12')
Site:	SRC Phelps 11-32CHZ Pad Sec.32-T1N-R66W	MD Reference:	WELL @ 5030.0ft (Ensign Rig #17 - RKB - 12')
Well:	SRC Phelps 12-32NHZ	North Reference:	True
Wellbore:	Wellbore #1	Survey Calculation Method:	Minimum Curvature
Design:	Wellbore #1	Database:	Landmark

Survey										
Measured Depth (ft)	Inclination (°)	Azimuth (°)	Vertical Depth (ft)	+N/-S (ft)	+E/-W (ft)	Vertical Section (ft)	Dogleg Rate (°/100ft)	Build Rate (°/100ft)	Turn Rate (°/100ft)	
1,407.0	3.10	152.70	1,405.4	-42.6	19.3	-15.4	0.96	-0.96	-0.08	
1,469.0	3.20	125.40	1,467.3	-45.1	21.5	-17.4	2.40	0.16	-44.03	
1,531.0	4.40	140.00	1,529.2	-47.9	24.4	-20.1	2.47	1.94	23.55	
1,656.0	6.50	151.40	1,653.6	-57.8	30.9	-25.6	1.88	1.68	9.12	
1,782.0	6.40	150.70	1,778.8	-70.2	37.7	-31.4	0.10	-0.08	-0.56	
1,907.0	6.20	148.80	1,903.1	-82.1	44.6	-37.2	0.23	-0.16	-1.52	
2,031.0	5.60	144.60	2,026.4	-92.7	51.6	-43.2	0.60	-0.48	-3.39	
2,157.0	4.90	135.10	2,151.9	-101.5	59.0	-49.7	0.88	-0.56	-7.54	
2,282.0	4.10	140.50	2,276.5	-108.8	65.6	-55.7	0.72	-0.64	4.32	
2,407.0	5.90	139.30	2,401.0	-117.1	72.6	-61.9	1.44	1.44	-0.96	
2,532.0	5.30	136.00	2,525.4	-126.1	80.8	-69.3	0.54	-0.48	-2.64	
2,657.0	4.50	135.30	2,650.0	-133.8	88.3	-76.1	0.64	-0.64	-0.56	
2,782.0	5.40	138.80	2,774.5	-141.7	95.6	-82.6	0.76	0.72	2.80	
2,907.0	5.90	140.50	2,898.9	-151.0	103.6	-89.7	0.42	0.40	1.36	
3,031.0	6.20	143.20	3,022.2	-161.3	111.6	-96.9	0.33	0.24	2.18	
3,157.0	6.20	140.40	3,147.5	-172.0	120.0	-104.3	0.24	0.00	-2.22	
3,283.0	6.10	143.20	3,272.7	-182.6	128.4	-111.7	0.25	-0.08	2.22	
3,409.0	5.90	141.20	3,398.0	-193.0	136.5	-118.8	0.23	-0.16	-1.59	
3,534.0	6.20	146.90	3,522.3	-203.7	144.2	-125.5	0.54	0.24	4.56	
3,659.0	6.60	146.90	3,646.6	-215.4	151.8	-132.1	0.32	0.32	0.00	
3,786.0	6.10	145.10	3,772.8	-227.0	159.6	-138.8	0.42	-0.39	-1.42	
3,912.0	6.20	147.70	3,898.1	-238.3	167.1	-145.3	0.23	0.08	2.06	
4,006.0	6.90	146.50	3,991.5	-247.3	172.9	-150.3	0.76	0.74	-1.28	
4,132.0	6.20	138.80	4,116.6	-258.7	181.6	-157.9	0.89	-0.56	-6.11	
4,257.0	6.40	147.20	4,240.9	-269.6	189.8	-165.1	0.75	0.16	6.72	
4,383.0	5.80	146.90	4,366.2	-280.9	197.1	-171.4	0.48	-0.48	-0.24	
4,509.0	5.50	146.90	4,491.6	-291.2	203.9	-177.2	0.24	-0.24	0.00	
4,634.0	5.60	143.30	4,616.0	-301.2	210.8	-183.2	0.29	0.08	-2.88	
4,761.0	5.60	156.90	4,742.4	-311.8	216.9	-188.4	1.04	0.00	10.71	
4,887.0	4.90	150.20	4,867.8	-322.1	222.0	-192.5	0.74	-0.56	-5.32	
5,012.0	5.50	156.90	4,992.3	-332.3	227.0	-196.6	0.68	0.48	5.36	
5,138.0	4.80	156.90	5,117.8	-342.7	231.4	-200.1	0.56	-0.56	0.00	
5,264.0	5.30	160.70	5,243.3	-353.0	235.4	-203.1	0.48	0.40	3.02	
5,389.0	5.70	156.00	5,367.7	-364.2	239.9	-206.6	0.48	0.32	-3.76	
5,514.0	6.00	146.70	5,492.1	-375.3	246.0	-211.7	0.79	0.24	-7.44	
5,640.0	5.20	146.90	5,617.5	-385.6	252.7	-217.5	0.64	-0.63	0.16	
5,766.0	4.00	146.30	5,743.1	-394.0	258.3	-222.2	0.95	-0.95	-0.48	
5,892.0	3.40	148.80	5,868.8	-400.9	262.6	-226.0	0.49	-0.48	1.98	
6,018.0	2.50	142.30	5,994.7	-406.2	266.2	-229.1	0.76	-0.71	-5.16	
6,143.0	2.00	131.20	6,119.6	-409.8	269.6	-232.1	0.53	-0.40	-8.88	
6,269.0	1.80	125.80	6,245.5	-412.4	272.8	-235.1	0.21	-0.16	-4.29	
6,394.0	0.40	299.60	6,370.5	-413.4	274.0	-236.2	1.76	-1.12	139.04	
6,520.0	0.20	285.00	6,496.5	-413.1	273.4	-235.7	0.17	-0.16	-11.59	
6,646.0	0.20	239.00	6,622.5	-413.1	273.0	-235.3	0.12	0.00	-36.51	
6,709.0	1.10	265.00	6,685.5	-413.3	272.3	-234.6	1.47	1.43	41.27	
6,741.0	1.40	273.20	6,717.5	-413.3	271.6	-233.9	1.09	0.94	25.63	
6,772.0	3.40	279.90	6,748.4	-413.1	270.4	-232.6	6.50	6.45	21.61	
6,803.0	6.10	286.60	6,779.3	-412.5	267.9	-230.2	8.88	8.71	21.61	
6,834.0	8.70	287.50	6,810.1	-411.3	264.1	-226.5	8.40	8.39	2.90	
6,866.0	11.50	286.30	6,841.6	-409.7	258.7	-221.3	8.77	8.75	-3.75	
6,897.0	13.90	284.50	6,871.8	-407.9	252.1	-214.9	7.85	7.74	-5.81	
6,928.0	15.60	280.60	6,901.8	-406.2	244.4	-207.4	6.35	5.48	-12.58	
6,960.0	17.80	276.40	6,932.4	-404.8	235.3	-198.4	7.84	6.88	-13.13	
6,991.0	19.50	272.40	6,961.8	-404.1	225.4	-188.7	6.86	5.48	-12.90	

Company:	Synergy Resources	Local Co-ordinate Reference:	Well SRC Phelps 12-32NHZ
Project:	SEC.32-T1N-R66W	TVD Reference:	WELL @ 5030.0ft (Ensign Rig #17 - RKB - 12')
Site:	SRC Phelps 11-32CHZ Pad Sec.32-T1N-R66W	MD Reference:	WELL @ 5030.0ft (Ensign Rig #17 - RKB - 12')
Well:	SRC Phelps 12-32NHZ	North Reference:	True
Wellbore:	Wellbore #1	Survey Calculation Method:	Minimum Curvature
Design:	Wellbore #1	Database:	Landmark

Survey										
Measured Depth (ft)	Inclination (°)	Azimuth (°)	Vertical Depth (ft)	+N/-S (ft)	+E/-W (ft)	Vertical Section (ft)	Dogleg Rate (°/100ft)	Build Rate (°/100ft)	Turn Rate (°/100ft)	
7,023.0	20.80	270.80	6,991.8	-403.8	214.4	-177.7	4.41	4.06	-5.00	
7,055.0	22.50	271.30	7,021.6	-403.6	202.6	-166.0	5.34	5.31	1.56	
7,086.0	24.30	271.10	7,050.0	-403.3	190.3	-153.7	5.81	5.81	-0.65	
7,117.0	27.00	270.30	7,078.0	-403.1	176.9	-140.4	8.78	8.71	-2.58	
7,149.0	29.40	268.00	7,106.2	-403.4	161.8	-125.3	8.23	7.50	-7.19	
7,181.0	31.90	266.70	7,133.7	-404.1	145.5	-109.0	8.08	7.81	-4.06	
7,212.0	33.50	267.40	7,159.8	-405.0	128.8	-92.3	5.30	5.16	2.26	
7,243.0	34.20	269.90	7,185.5	-405.4	111.5	-75.1	5.03	2.26	8.06	
7,275.0	34.20	270.80	7,212.0	-405.3	93.5	-57.2	1.58	0.00	2.81	
7,306.0	36.00	271.10	7,237.4	-405.0	75.7	-39.4	5.83	5.81	0.97	
7,338.0	39.00	271.30	7,262.8	-404.6	56.2	-20.1	9.38	9.38	0.63	
7,369.0	42.00	271.30	7,286.3	-404.1	36.1	-0.1	9.68	9.68	0.00	
7,400.0	44.40	271.30	7,308.9	-403.6	14.9	21.0	7.74	7.74	0.00	
7,432.0	46.80	271.10	7,331.3	-403.2	-8.0	43.7	7.51	7.50	-0.63	
7,463.0	49.80	270.10	7,351.9	-402.9	-31.1	66.8	9.97	9.68	-3.23	
7,495.0	53.50	268.70	7,371.8	-403.2	-56.2	91.8	12.06	11.56	-4.38	
7,527.0	57.40	267.80	7,389.9	-404.0	-82.5	118.1	12.41	12.19	-2.81	
7,558.0	60.70	268.70	7,405.9	-404.8	-109.1	144.6	10.93	10.65	2.90	
7,590.0	63.40	270.30	7,420.9	-405.1	-137.4	172.8	9.52	8.44	5.00	
7,621.0	65.60	271.80	7,434.2	-404.5	-165.4	200.6	8.33	7.10	4.84	
7,653.0	68.20	272.70	7,446.8	-403.4	-194.8	229.8	8.53	8.13	2.81	
7,685.0	71.30	272.20	7,457.8	-402.1	-224.8	259.6	9.80	9.69	-1.56	
7,716.0	75.30	271.30	7,466.7	-401.2	-254.4	289.0	13.20	12.90	-2.90	
7,747.0	79.70	270.40	7,473.5	-400.8	-284.7	319.1	14.47	14.19	-2.90	
7,779.0	84.30	269.60	7,477.9	-400.8	-316.4	350.7	14.59	14.38	-2.50	
7,788.0	85.30	269.20	7,478.7	-400.8	-325.3	359.6	11.96	11.11	-4.44	
7,824.0	88.07	270.44	7,480.8	-401.0	-361.3	395.4	8.44	7.70	3.45	
7"										
7,849.0	90.00	271.30	7,481.2	-400.6	-386.2	420.3	8.44	7.71	3.44	
7,881.0	89.70	270.40	7,481.3	-400.1	-418.2	452.1	2.96	-0.94	-2.81	
7,912.0	89.30	268.70	7,481.6	-400.3	-449.2	483.0	5.63	-1.29	-5.48	
7,943.0	89.80	267.30	7,481.8	-401.4	-480.2	514.0	4.80	1.61	-4.52	
7,974.0	89.80	265.00	7,481.9	-403.5	-511.1	545.0	7.42	0.00	-7.42	
8,006.0	89.80	264.30	7,482.0	-406.5	-543.0	577.0	2.19	0.00	-2.19	
8,038.0	89.70	263.80	7,482.2	-409.8	-574.8	609.0	1.59	-0.31	-1.56	
8,069.0	90.10	264.10	7,482.2	-413.1	-605.7	640.0	1.61	1.29	0.97	
8,101.0	89.70	264.10	7,482.3	-416.4	-637.5	671.9	1.25	-1.25	0.00	
8,132.0	90.30	266.40	7,482.3	-418.9	-668.4	702.9	7.67	1.94	7.42	
8,164.0	90.00	266.40	7,482.2	-420.9	-700.3	734.9	0.94	-0.94	0.00	
8,195.0	89.70	266.60	7,482.3	-422.8	-731.3	765.9	1.16	-0.97	0.65	
8,227.0	90.40	267.40	7,482.3	-424.5	-763.2	797.9	3.32	2.19	2.50	
8,258.0	90.00	267.30	7,482.1	-425.9	-794.2	828.9	1.33	-1.29	-0.32	
8,290.0	89.90	267.30	7,482.2	-427.5	-826.1	860.8	0.31	-0.31	0.00	
8,321.0	90.00	266.90	7,482.2	-429.0	-857.1	891.8	1.33	0.32	-1.29	
8,352.0	90.30	268.30	7,482.1	-430.3	-888.1	922.8	4.62	0.97	4.52	
8,384.0	90.80	269.20	7,481.8	-431.0	-920.1	954.7	3.22	1.56	2.81	
8,415.0	90.90	270.40	7,481.4	-431.1	-951.1	985.6	3.88	0.32	3.87	
8,447.0	90.70	271.50	7,480.9	-430.6	-983.1	1,017.4	3.49	-0.63	3.44	
8,478.0	90.80	271.30	7,480.5	-429.8	-1,014.0	1,048.2	0.72	0.32	-0.65	
8,509.0	90.70	271.50	7,480.1	-429.1	-1,045.0	1,079.0	0.72	-0.32	0.65	
8,541.0	90.10	272.00	7,479.9	-428.1	-1,077.0	1,110.8	2.44	-1.88	1.56	
8,572.0	89.30	270.10	7,480.0	-427.5	-1,108.0	1,141.6	6.65	-2.58	-6.13	
8,603.0	89.20	270.40	7,480.4	-427.4	-1,139.0	1,172.5	1.02	-0.32	0.97	
8,634.0	89.50	270.80	7,480.8	-427.1	-1,170.0	1,203.3	1.61	0.97	1.29	

Company:	Synergy Resources	Local Co-ordinate Reference:	Well SRC Phelps 12-32NHZ
Project:	SEC.32-T1N-R66W	TVD Reference:	WELL @ 5030.0ft (Ensign Rig #17 - RKB - 12')
Site:	SRC Phelps 11-32CHZ Pad Sec.32-T1N-R66W	MD Reference:	WELL @ 5030.0ft (Ensign Rig #17 - RKB - 12')
Well:	SRC Phelps 12-32NHZ	North Reference:	True
Wellbore:	Wellbore #1	Survey Calculation Method:	Minimum Curvature
Design:	Wellbore #1	Database:	Landmark

Survey

Measured Depth (ft)	Inclination (°)	Azimuth (°)	Vertical Depth (ft)	+N/-S (ft)	+E/-W (ft)	Vertical Section (ft)	Dogleg Rate (°/100ft)	Build Rate (°/100ft)	Turn Rate (°/100ft)
8,666.0	90.00	272.00	7,480.9	-426.3	-1,202.0	1,235.1	4.06	1.56	3.75
8,697.0	90.80	274.30	7,480.7	-424.6	-1,232.9	1,265.8	7.86	2.58	7.42
8,729.0	90.70	273.60	7,480.3	-422.4	-1,264.9	1,297.4	2.21	-0.31	-2.19
8,761.0	89.50	272.70	7,480.2	-420.6	-1,296.8	1,329.0	4.69	-3.75	-2.81
8,792.0	89.50	271.70	7,480.5	-419.4	-1,327.8	1,359.8	3.23	0.00	-3.23
8,824.0	89.80	272.50	7,480.7	-418.3	-1,359.8	1,391.5	2.67	0.94	2.50
8,855.0	90.30	273.40	7,480.7	-416.7	-1,390.7	1,422.2	3.32	1.61	2.90
8,887.0	91.10	274.50	7,480.3	-414.5	-1,422.6	1,453.8	4.25	2.50	3.44
8,918.0	90.50	273.10	7,479.9	-412.4	-1,453.6	1,484.5	4.91	-1.94	-4.52
8,950.0	89.90	273.10	7,479.7	-410.7	-1,485.5	1,516.1	1.88	-1.88	0.00
8,982.0	89.90	273.60	7,479.8	-408.8	-1,517.5	1,547.8	1.56	0.00	1.56
9,014.0	89.80	273.40	7,479.9	-406.9	-1,549.4	1,579.4	0.70	-0.31	-0.63
9,045.0	89.80	272.70	7,480.0	-405.2	-1,580.4	1,610.1	2.26	0.00	-2.26
9,077.0	89.60	272.40	7,480.2	-403.8	-1,612.3	1,641.8	1.13	-0.63	-0.94
9,108.0	89.30	272.50	7,480.5	-402.5	-1,643.3	1,672.6	1.02	-0.97	0.32
9,139.0	90.00	272.50	7,480.6	-401.1	-1,674.3	1,703.3	2.26	2.26	0.00
9,171.0	90.00	271.50	7,480.6	-400.0	-1,706.3	1,735.0	3.13	0.00	-3.13
9,202.0	90.00	269.90	7,480.6	-399.6	-1,737.3	1,765.9	5.16	0.00	-5.16
9,234.0	89.90	268.30	7,480.7	-400.1	-1,769.3	1,797.8	5.01	-0.31	-5.00
9,266.0	89.90	269.00	7,480.7	-400.9	-1,801.2	1,829.7	2.19	0.00	2.19
9,297.0	90.10	270.30	7,480.7	-401.1	-1,832.2	1,860.6	4.24	0.65	4.19
9,328.0	90.30	270.40	7,480.6	-400.9	-1,863.2	1,891.5	0.72	0.65	0.32
9,360.0	90.00	268.90	7,480.5	-401.1	-1,895.2	1,923.4	4.78	-0.94	-4.69
9,391.0	90.00	267.40	7,480.5	-402.1	-1,926.2	1,954.3	4.84	0.00	-4.84
9,423.0	90.00	266.20	7,480.5	-403.9	-1,958.2	1,986.3	3.75	0.00	-3.75
9,454.0	90.10	265.90	7,480.5	-406.0	-1,989.1	2,017.3	1.02	0.32	-0.97
9,486.0	90.00	265.50	7,480.5	-408.4	-2,021.0	2,049.3	1.29	-0.31	-1.25
9,517.0	90.50	265.50	7,480.3	-410.8	-2,051.9	2,080.3	1.61	1.61	0.00
9,549.0	90.00	265.00	7,480.2	-413.5	-2,083.8	2,112.3	2.21	-1.56	-1.56
9,580.0	89.80	265.50	7,480.3	-416.0	-2,114.7	2,143.3	1.74	-0.65	1.61
9,612.0	89.90	267.10	7,480.3	-418.1	-2,146.6	2,175.3	5.01	0.31	5.00
9,643.0	90.00	268.30	7,480.4	-419.3	-2,177.6	2,206.2	3.88	0.32	3.87
9,675.0	90.30	269.40	7,480.3	-420.0	-2,209.6	2,238.2	3.56	0.94	3.44
9,707.0	90.20	270.80	7,480.2	-419.9	-2,241.6	2,270.0	4.39	-0.31	4.38
9,738.0	89.90	272.40	7,480.1	-419.1	-2,272.6	2,300.8	5.25	-0.97	5.16
9,769.0	89.60	273.60	7,480.3	-417.4	-2,303.5	2,331.5	3.99	-0.97	3.87
9,801.0	90.10	274.50	7,480.3	-415.2	-2,335.5	2,363.1	3.22	1.56	2.81
9,832.0	90.30	275.50	7,480.2	-412.5	-2,366.3	2,393.6	3.29	0.65	3.23
9,864.0	90.00	276.20	7,480.2	-409.2	-2,398.2	2,425.0	2.38	-0.94	2.19
9,895.0	89.60	276.20	7,480.3	-405.9	-2,429.0	2,455.4	1.29	-1.29	0.00
9,926.0	90.00	276.90	7,480.4	-402.3	-2,459.8	2,485.8	2.60	1.29	2.26
9,958.0	89.50	276.60	7,480.5	-398.6	-2,491.6	2,517.1	1.82	-1.56	-0.94
9,989.0	89.60	276.80	7,480.8	-395.0	-2,522.3	2,547.5	0.72	0.32	0.65
10,020.0	90.00	275.20	7,480.9	-391.7	-2,553.2	2,577.9	5.32	1.29	-5.16
10,051.0	89.70	272.70	7,480.9	-389.6	-2,584.1	2,608.5	8.12	-0.97	-8.06
10,082.0	89.50	270.10	7,481.2	-388.8	-2,615.1	2,639.3	8.41	-0.65	-8.39
10,114.0	89.80	270.40	7,481.4	-388.7	-2,647.1	2,671.1	1.33	0.94	0.94
10,145.0	90.00	271.00	7,481.4	-388.3	-2,678.1	2,702.0	2.04	0.65	1.94
10,176.0	90.10	269.70	7,481.4	-388.1	-2,709.1	2,732.8	4.21	0.32	-4.19
10,208.0	90.00	267.80	7,481.4	-388.8	-2,741.1	2,764.8	5.95	-0.31	-5.94
10,239.0	89.70	266.00	7,481.4	-390.5	-2,772.0	2,795.8	5.89	-0.97	-5.81
10,271.0	89.60	266.70	7,481.6	-392.5	-2,804.0	2,827.7	2.21	-0.31	2.19
10,302.0	90.10	267.80	7,481.7	-394.0	-2,834.9	2,858.7	3.90	1.61	3.55
10,334.0	90.30	269.00	7,481.6	-394.9	-2,866.9	2,890.7	3.80	0.63	3.75

Company:	Synergy Resources	Local Co-ordinate Reference:	Well SRC Phelps 12-32NHZ
Project:	SEC.32-T1N-R66W	TVD Reference:	WELL @ 5030.0ft (Ensign Rig #17 - RKB - 12')
Site:	SRC Phelps 11-32CHZ Pad Sec.32-T1N-R66W	MD Reference:	WELL @ 5030.0ft (Ensign Rig #17 - RKB - 12')
Well:	SRC Phelps 12-32NHZ	North Reference:	True
Wellbore:	Wellbore #1	Survey Calculation Method:	Minimum Curvature
Design:	Wellbore #1	Database:	Landmark

Survey									
Measured Depth (ft)	Inclination (°)	Azimuth (°)	Vertical Depth (ft)	+N/-S (ft)	+E/-W (ft)	Vertical Section (ft)	Dogleg Rate (°/100ft)	Build Rate (°/100ft)	Turn Rate (°/100ft)
10,365.0	90.00	268.10	7,481.5	-395.7	-2,897.9	2,921.6	3.06	-0.97	-2.90
10,396.0	90.00	268.30	7,481.5	-396.7	-2,928.9	2,952.5	0.65	0.00	0.65
10,428.0	90.00	268.30	7,481.5	-397.6	-2,960.9	2,984.5	0.00	0.00	0.00
10,459.0	90.10	268.30	7,481.5	-398.5	-2,991.9	3,015.4	0.32	0.32	0.00
10,490.0	90.20	267.80	7,481.4	-399.6	-3,022.8	3,046.4	1.64	0.32	-1.61
10,521.0	90.00	267.10	7,481.4	-401.0	-3,053.8	3,077.4	2.35	-0.65	-2.26
10,553.0	90.10	266.90	7,481.3	-402.6	-3,085.8	3,109.3	0.70	0.31	-0.63
10,585.0	90.00	268.10	7,481.3	-404.0	-3,117.7	3,141.3	3.76	-0.31	3.75
10,616.0	89.90	269.60	7,481.3	-404.7	-3,148.7	3,172.2	4.85	-0.32	4.84
10,647.0	89.30	270.40	7,481.5	-404.7	-3,179.7	3,203.1	3.23	-1.94	2.58
10,678.0	89.10	270.30	7,482.0	-404.5	-3,210.7	3,234.0	0.72	-0.65	-0.32
10,710.0	89.00	270.60	7,482.5	-404.2	-3,242.7	3,265.8	0.99	-0.31	0.94
10,741.0	89.10	270.60	7,483.0	-403.9	-3,273.7	3,296.6	0.32	0.32	0.00
10,773.0	88.80	270.30	7,483.6	-403.6	-3,305.7	3,328.5	1.33	-0.94	-0.94
10,805.0	89.30	270.10	7,484.1	-403.5	-3,337.7	3,360.4	1.68	1.56	-0.63
10,836.0	89.40	270.40	7,484.5	-403.4	-3,368.7	3,391.2	1.02	0.32	0.97
10,868.0	89.50	270.30	7,484.8	-403.2	-3,400.7	3,423.1	0.44	0.31	-0.31
10,899.0	89.90	270.60	7,485.0	-403.0	-3,431.7	3,453.9	1.61	1.29	0.97
10,931.0	91.00	271.30	7,484.7	-402.4	-3,463.7	3,485.7	4.07	3.44	2.19
10,963.0	91.10	271.00	7,484.1	-401.8	-3,495.7	3,517.5	0.99	0.31	-0.94
10,994.0	91.40	270.60	7,483.4	-401.4	-3,526.7	3,548.4	1.61	0.97	-1.29
11,026.0	91.70	270.60	7,482.6	-401.0	-3,558.7	3,580.2	0.94	0.94	0.00
11,057.0	91.20	271.10	7,481.8	-400.6	-3,589.6	3,611.0	2.28	-1.61	1.61
11,089.0	91.30	270.60	7,481.1	-400.1	-3,621.6	3,642.8	1.59	0.31	-1.56
11,120.0	90.80	270.80	7,480.5	-399.7	-3,652.6	3,673.7	1.74	-1.61	0.65
11,151.0	90.90	270.40	7,480.1	-399.4	-3,683.6	3,704.5	1.33	0.32	-1.29
11,182.0	90.40	270.30	7,479.7	-399.2	-3,714.6	3,735.4	1.64	-1.61	-0.32
11,214.0	89.90	268.70	7,479.6	-399.5	-3,746.6	3,767.3	5.24	-1.56	-5.00
11,246.0	89.00	268.10	7,479.9	-400.4	-3,778.6	3,799.2	3.38	-2.81	-1.88
11,277.0	88.60	267.80	7,480.6	-401.5	-3,809.6	3,830.2	1.61	-1.29	-0.97
11,309.0	88.70	268.00	7,481.3	-402.6	-3,841.5	3,862.1	0.70	0.31	0.63
11,340.0	88.90	268.00	7,482.0	-403.7	-3,872.5	3,893.1	0.65	0.65	0.00
11,372.0	88.90	267.40	7,482.6	-405.0	-3,904.5	3,925.0	1.87	0.00	-1.88
11,403.0	89.10	267.40	7,483.1	-406.4	-3,935.4	3,956.0	0.65	0.65	0.00
11,434.0	89.60	267.40	7,483.5	-407.8	-3,966.4	3,987.0	1.61	1.61	0.00
11,465.0	90.00	267.30	7,483.6	-409.3	-3,997.4	4,017.9	1.33	1.29	-0.32
11,497.0	89.80	267.60	7,483.7	-410.7	-4,029.3	4,049.9	1.13	-0.63	0.94
11,528.0	90.00	268.10	7,483.7	-411.8	-4,060.3	4,080.9	1.74	0.65	1.61
11,559.0	90.30	268.00	7,483.6	-412.9	-4,091.3	4,111.8	1.02	0.97	-0.32
11,591.0	90.50	268.90	7,483.4	-413.8	-4,123.3	4,143.7	2.88	0.63	2.81
11,622.0	90.60	270.10	7,483.1	-414.0	-4,154.3	4,174.6	3.88	0.32	3.87
11,653.0	90.40	269.60	7,482.8	-414.1	-4,185.3	4,205.5	1.74	-0.65	-1.61
11,684.0	90.70	270.30	7,482.5	-414.1	-4,216.3	4,236.4	2.46	0.97	2.26
11,716.0	90.70	270.80	7,482.2	-413.8	-4,248.3	4,268.2	1.56	0.00	1.56
11,748.0	90.60	270.40	7,481.8	-413.5	-4,280.3	4,300.1	1.29	-0.31	-1.25
11,779.0	89.70	271.00	7,481.7	-413.1	-4,311.3	4,330.9	3.49	-2.90	1.94
11,811.0	89.20	269.90	7,482.0	-412.9	-4,343.3	4,362.8	3.78	-1.56	-3.44
11,843.0	89.20	269.60	7,482.5	-413.0	-4,375.3	4,394.7	0.94	0.00	-0.94
11,874.0	90.30	271.70	7,482.6	-412.7	-4,406.3	4,425.5	7.65	3.55	6.77
11,905.0	90.10	271.30	7,482.5	-411.8	-4,437.3	4,456.3	1.44	-0.65	-1.29
11,930.0	89.90	269.90	7,482.5	-411.6	-4,462.3	4,481.2	5.66	-0.80	-5.60
11,985.0	89.90	269.90	7,482.6	-411.7	-4,517.3	4,536.0	0.00	0.00	0.00
BHL 2188'FNL, 460'FWL									

Company:	Synergy Resources	Local Co-ordinate Reference:	Well SRC Phelps 12-32NHZ
Project:	SEC.32-T1N-R66W	TVD Reference:	WELL @ 5030.0ft (Ensign Rig #17 - RKB - 12')
Site:	SRC Phelps 11-32CHZ Pad Sec.32-T1N-R66W	MD Reference:	WELL @ 5030.0ft (Ensign Rig #17 - RKB - 12')
Well:	SRC Phelps 12-32NHZ	North Reference:	True
Wellbore:	Wellbore #1	Survey Calculation Method:	Minimum Curvature
Design:	Wellbore #1	Database:	Landmark

Casing Points					
Measured Depth (ft)	Vertical Depth (ft)	Name	Casing Diameter (")	Hole Diameter (")	
7,824.0	7,480.8	7"	7	7-1/2	

Checked By: _____	Approved By: _____	Date: _____
-------------------	--------------------	-------------