

WELL LOCATION FOR AUGUSTUS ENERGY RESOURCES LLC

HAGEMANN 43-10 1N46W

R 46 W

NOTES

BEARINGS SHOWN HEREON ARE
BASED UPON RTK GPS
OBSERVATIONS

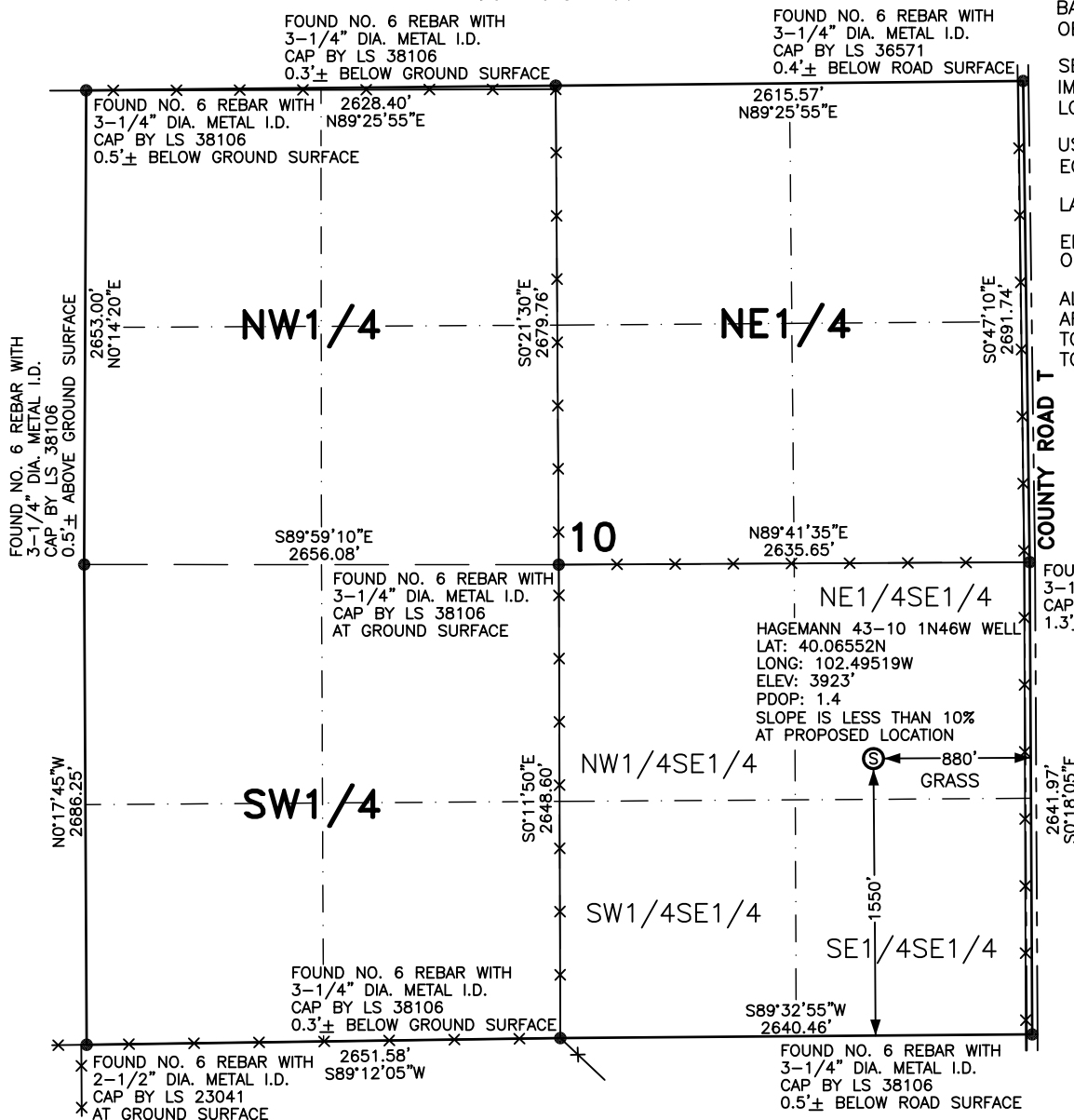
SEE LOCATION DRAWING FOR
IMPROVEMENTS WITHIN 700' OF
LOCATION.

USGS QUAD MAP:
ECKLEY, COLO.

LAT/LONG VALUES ARE NAD83

ELEVATIONS BASED UPON NGS
OPUS SOLUTION NAVD 88 DATUM

ALL DISTANCES TO SECTION LINES
ARE MEASURED PERPENDICULAR
TO AND ARE AT RIGHT ANGLES
TO SAID SECTION LINES.



LEGEND

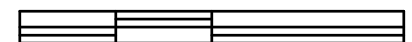
⊙ FIELD SURVEYED
WELL LOCATION

== == == ROAD
-x-x- FENCE



SCALE: 1" = 1000'

1000 500 0 1000



SCALE IN FEET



LEIBERT-McATEE & ASSOCIATES, INC.

P.O. BOX 442 615 SOUTH TENTH AVENUE
STERLING, CO 80751 970-522-1960

FIELD DATE: 6-11-14	DWG DATE: 6-25-14	GPS OPERATOR: DARREN VEAL
HAGEMANN 43-10 1N46W	DWG NO. 810-14	SHEET 1 OF 1

THIS WELL LOCATION PLAT HAS BEEN PREPARED FOR AUGUSTUS ENERGY RESOURCES LLC
TO LOCATE THE HAGEMANN 43-10 1N46W WELL BEING 880 FEET FROM THE EAST LINE AND
1550 FEET FROM THE SOUTH LINE IN THE NE1/4SE1/4 OF SECTION 10,
TOWNSHIP 1 NORTH, RANGE 46 WEST OF THE 6TH P.M., YUMA COUNTY, COLORADO.
THE SURFACE ELEVATION AT THIS POINT IS 3923 FEET.
THIS IS NOT A LAND SURVEY PLAT.