

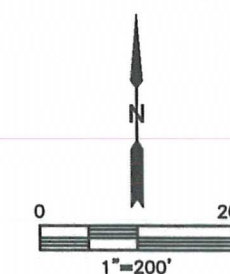
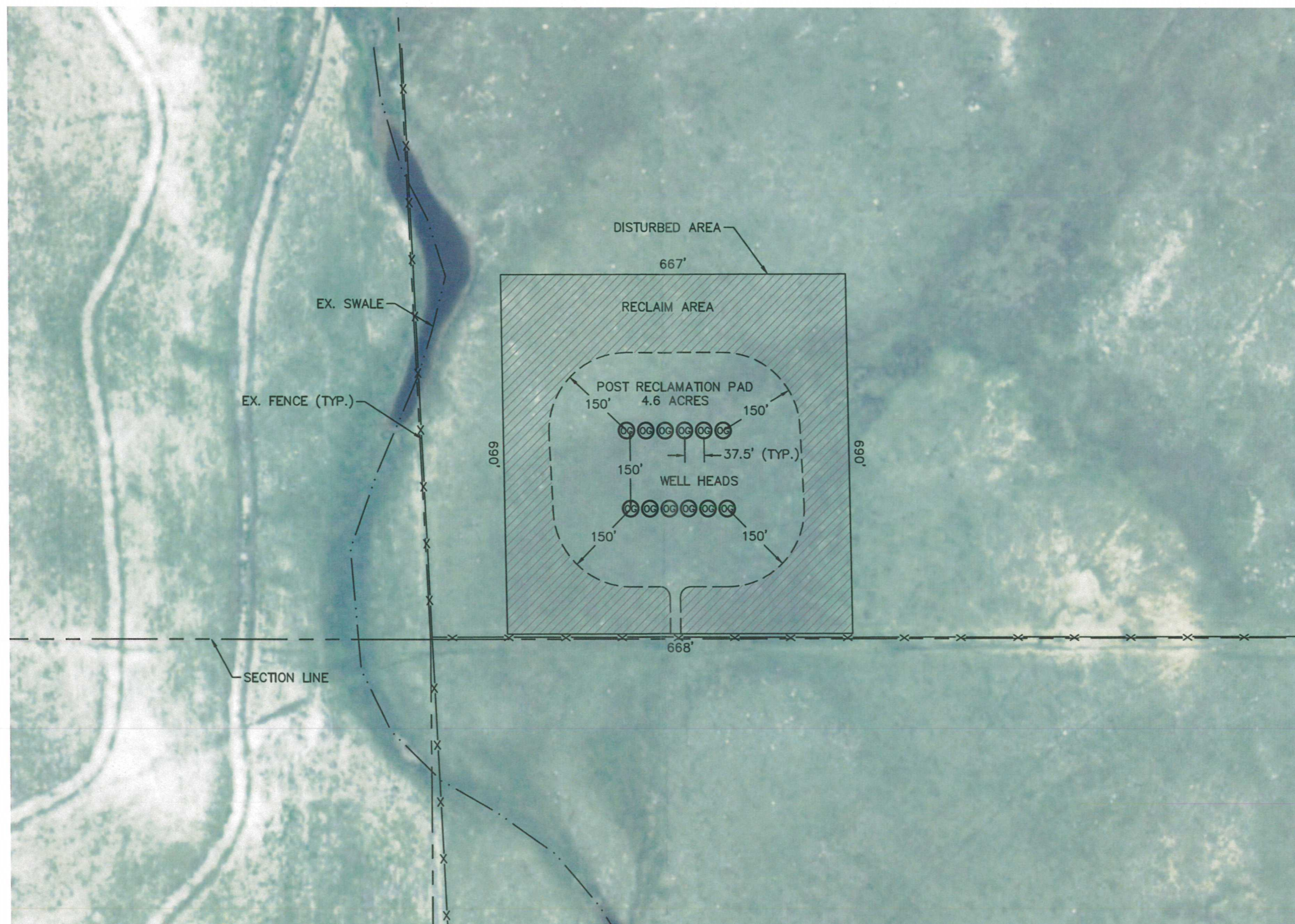


Lat40°, Inc. 1635 Foxtrail Drive, Suite 325 Loveland, CO 970-776-3321

PROPOSED SCALED FACILITY DRAWING

MCCAFFREY STATE LD12-76-1BHN PAD

SECTION: 1
TOWNSHIP: 9N
RANGE: 58W



DATE: 1/27/2014
PROJECT#: 2013115