

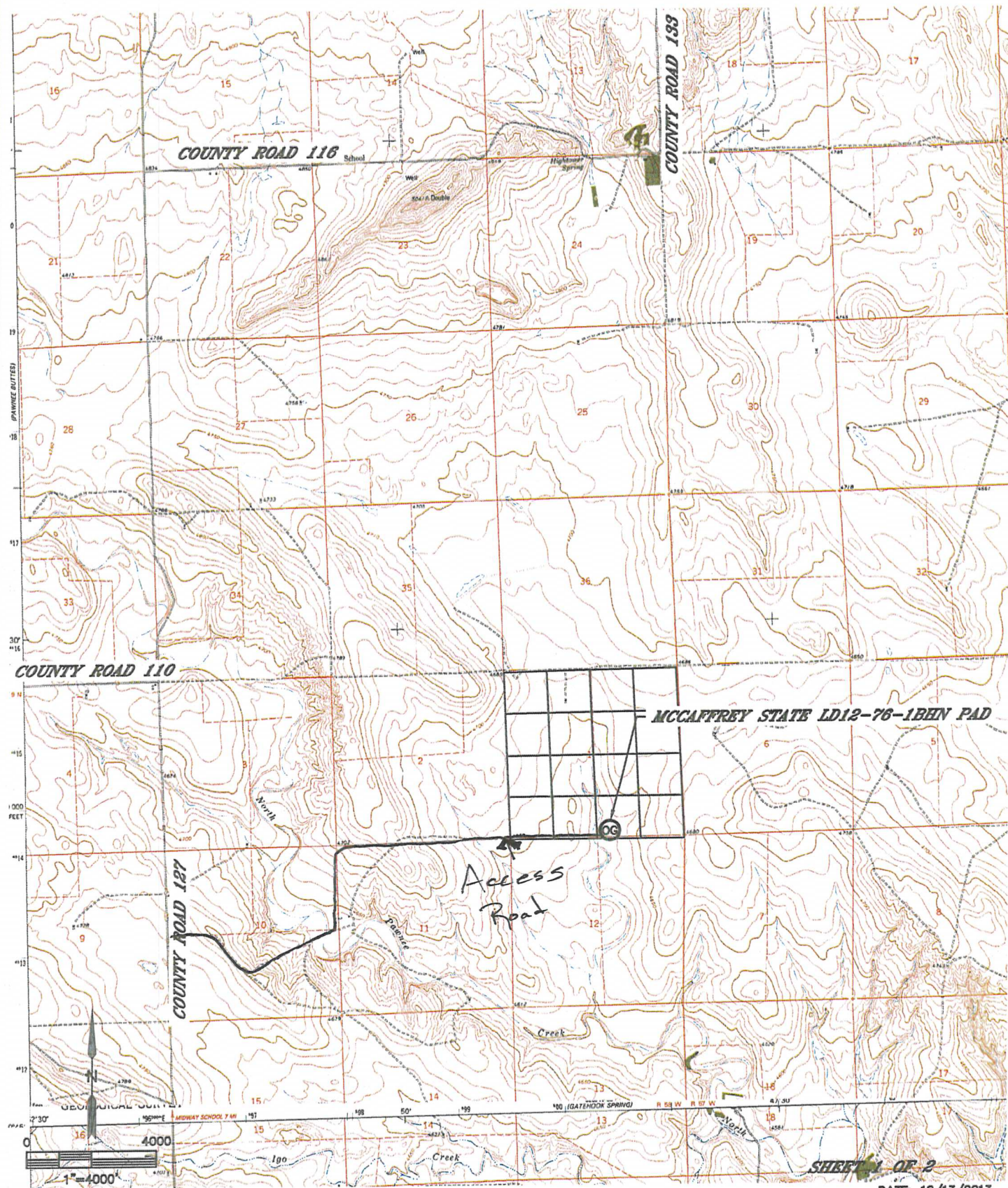


Lat40°, Inc. 1635 Foxtrail Drive, Suite 325 Loveland, CO 970-776-3321

ACCESS ROAD MAP

MCCAFFREY STATE LD12-76-1BHN PAD

SECTION: 1
TOWNSHIP: 9N
RANGE: 58W



SHEET 1 OF 2

DATE: 12/13/2013
PROJECT#: 2013115

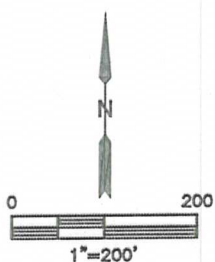
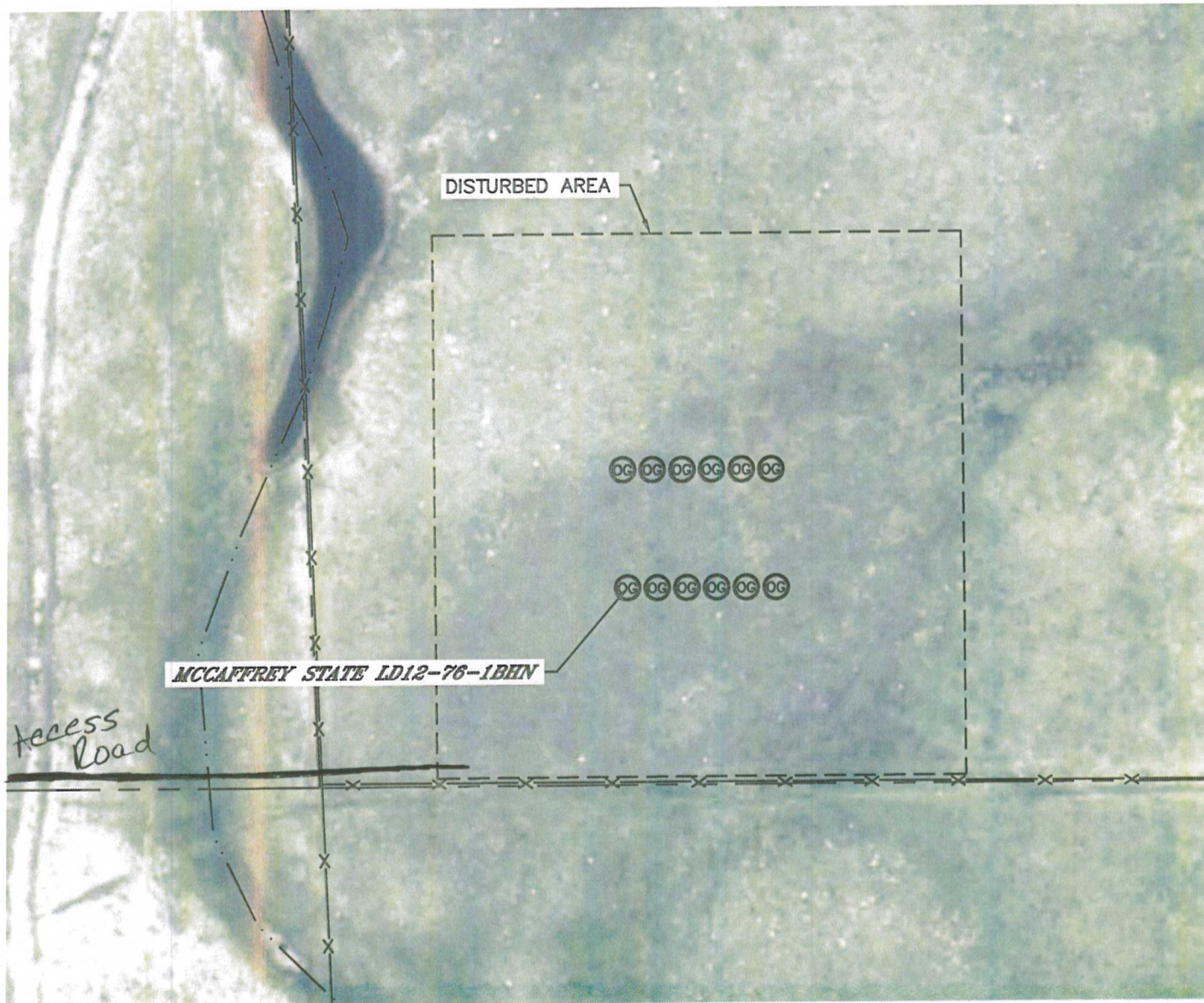


Lat40°, Inc. 1635 Foxtrail Drive, Suite 325 Loveland, CO 970-776-3321

ACCESS ROAD MAP

MCCAFFREY STATE LD12-76-1BHN PAD

SECTION: 1
TOWNSHIP: 9N
RANGE: 58W



SHEET 2 OF 2

DATE: 12/13/2013
PROJECT#: 2013115