

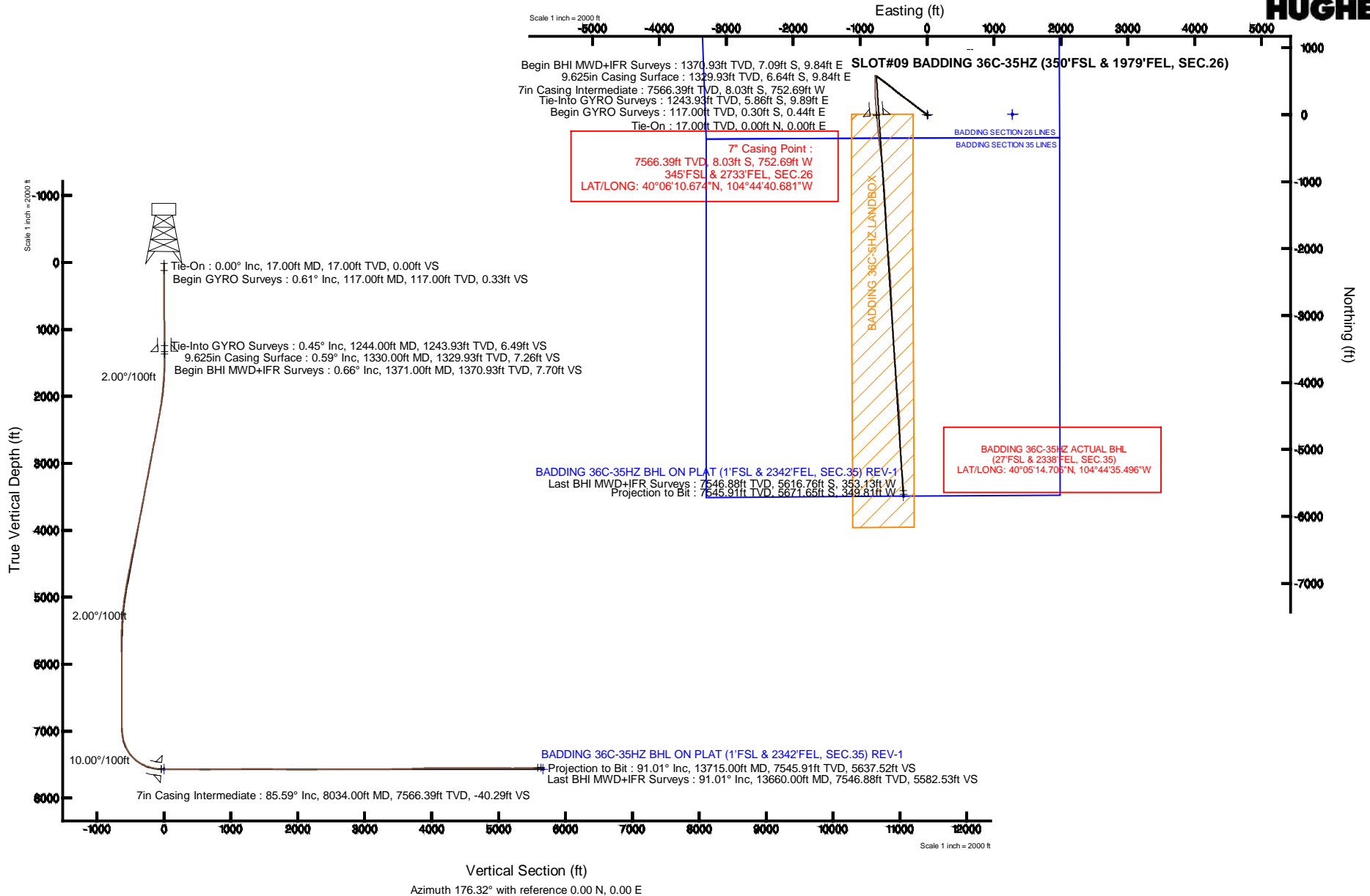
KERR-MCGEE OIL & GAS ONSHORE LP

Location: COLORADO Slot: SLOT#09 BADDING 36C-35HZ (350°FSL & 1979°FEL, SEC.26)
 Field: WELD COUNTY (KERR MCGEE) Well: BADDING 36C-35HZ
 Facility: SEC.26-T2N-R66W Wellbore: BADDING 36C-35HZ PWB



Plot reference wellpath is BADDING 36C-35HZ (REV-C.0) PWB

True vertical depths are referenced to XTREME 8 (17KB) (RKB)	Grid System: NAD83 / Lambert Colorado SP, Northern Zone (501), US feet
Measured depths are referenced to XTREME 8 (17KB) (RKB)	North Reference: True north
XTREME 8 (17KB) (RKB) to Mean Sea Level: 5129 feet	Scale: True distance
Mean Sea Level to Mud line (At Slot: SLOT#09 BADDING 36C-35HZ (350°FSL & 1979°FEL, SEC.26)): 0 feet	Depths are in feet
Coordinates are in feet referenced to Slot	Created by: preacin on 23/Apr/2014



REFERENCE WELLPATH IDENTIFICATION			
Operator	KERR-MCGEE OIL & GAS ONSHORE LP	Slot	SLOT#09 BADDING 36C-35HZ (350'FSL & 1979'FEL, SEC.26)
Area	COLORADO	Well	BADDING 36C-35HZ
Field	WELD COUNTY (KERR MCGEE)	Wellbore	BADDING 36C-35HZ AWB
Facility	SEC.26-T2N-R66W		

REPORT SETUP INFORMATION			
Projection System	NAD83 / Lambert Colorado SP, Northern Zone (501), US feet	Software System	WellArchitect® 4.0.0
North Reference	True	User	Precain
Scale	0.99996	Report Generated	23/Apr/2014 at 16:23
Convergence at slot	n/a	Database/Source file	WellArchitectDB/BADDING_36C-35HZ_AWB.xml

WELLPATH LOCATION						
	Local coordinates		Grid coordinates		Geographic coordinates	
	North[ft]	East[ft]	Easting[US ft]	Northing[US ft]	Latitude	Longitude
Slot Location	-5.84	-1275.00	3212049.08	1281268.87	40°06'10.753"N	104°44'30.995"W
Facility Reference Pt			3213323.93	1281285.67	40°06'10.811"N	104°44'14.587"W
Field Reference Pt			3197771.84	1268891.29	40°04'09.600"N	104°47'36.000"W

WELLPATH DATUM			
Calculation method	Minimum curvature	XTREME 8 (17'KB) (RKB) to Facility Vertical Datum	5129.00ft
Horizontal Reference Pt	Slot	XTREME 8 (17'KB) (RKB) to Mean Sea Level	5129.00ft
Vertical Reference Pt	XTREME 8 (17'KB) (RKB)	XTREME 8 (17'KB) (RKB) to Mud Line at Slot (SLOT#09 BADDING 36C-35HZ (350'FSL & 1979'FEL, SEC.26))	5129.00ft
MD Reference Pt	XTREME 8 (17'KB) (RKB)	Section Origin	N 0.00, E 0.00 ft
Field Vertical Reference	Mean Sea Level	Section Azimuth	176.32°

Actual Wellpath Report

BADDING 36C-35HZ AWP

Page 2 of 8

REFERENCE WELLPATH IDENTIFICATION

Operator	KERR-MCGEE OIL & GAS ONSHORE LP	Slot	SLOT#09 BADDING 36C-35HZ (350'FSL & 1979'FEL, SEC.26)
Area	COLORADO	Well	BADDING 36C-35HZ
Field	WELD COUNTY (KERR MCGEE)	Wellbore	BADDING 36C-35HZ AWB
Facility	SEC.26-T2N-R66W		

WELLPATH DATA (173 stations) † = interpolated/extrapolated station

MD [ft]	Inclination [°]	Azimuth [°]	TVD [ft]	Vert Sect [ft]	North [ft]	East [ft]	Latitude	Longitude	DLS [°/100ft]	Comments
0.00†	0.000	124.120	0.00	0.00	0.00	0.00	40°06'10.753"N	104°44'30.995"W	0.00	
17.00	0.000	124.120	17.00	0.00	0.00	0.00	40°06'10.753"N	104°44'30.995"W	0.00	Tie-On
117.00	0.610	124.120	117.00	0.33	-0.30	0.44	40°06'10.750"N	104°44'30.989"W	0.61	Begin GYRO Surveys
217.00	0.690	129.720	216.99	1.07	-0.98	1.34	40°06'10.743"N	104°44'30.978"W	0.10	
317.00	0.760	123.610	316.98	1.88	-1.73	2.36	40°06'10.736"N	104°44'30.965"W	0.10	
417.00	0.720	105.650	416.98	2.49	-2.27	3.52	40°06'10.731"N	104°44'30.950"W	0.23	
517.00	0.720	113.670	516.97	2.99	-2.69	4.70	40°06'10.726"N	104°44'30.935"W	0.10	
617.00	0.860	107.730	616.96	3.55	-3.17	5.99	40°06'10.722"N	104°44'30.918"W	0.16	
717.00	0.600	114.680	716.95	4.07	-3.62	7.18	40°06'10.717"N	104°44'30.903"W	0.27	
817.00	0.590	117.570	816.94	4.59	-4.08	8.11	40°06'10.713"N	104°44'30.891"W	0.03	
917.00	0.390	100.960	916.94	4.94	-4.38	8.90	40°06'10.710"N	104°44'30.880"W	0.24	
1017.00	0.460	139.010	1016.94	5.35	-4.75	9.50	40°06'10.706"N	104°44'30.873"W	0.28	
1117.00	0.220	134.760	1116.94	5.81	-5.19	9.90	40°06'10.702"N	104°44'30.868"W	0.24	
1217.00	0.410	196.100	1216.94	6.29	-5.66	9.94	40°06'10.697"N	104°44'30.867"W	0.36	
1244.00	0.450	188.250	1243.93	6.49	-5.86	9.89	40°06'10.695"N	104°44'30.868"W	0.26	Tie-Into GYRO Surveys
1371.00	0.660	178.790	1370.93	7.70	-7.09	9.84	40°06'10.683"N	104°44'30.868"W	0.18	Begin BHI MWD+IFR Surveys
1463.00	0.770	314.310	1462.93	7.77	-7.19	9.41	40°06'10.682"N	104°44'30.874"W	1.44	
1554.00	2.560	323.010	1553.88	5.62	-5.13	7.75	40°06'10.702"N	104°44'30.895"W	1.98	
1659.00	4.250	319.100	1658.69	0.56	-0.32	3.79	40°06'10.750"N	104°44'30.946"W	1.62	
1751.00	5.610	318.820	1750.35	-5.72	5.64	-1.41	40°06'10.809"N	104°44'31.013"W	1.48	
1842.00	7.230	310.130	1840.78	-13.21	12.68	-8.71	40°06'10.878"N	104°44'31.107"W	2.07	
1933.00	9.240	306.680	1930.84	-21.91	20.74	-18.95	40°06'10.958"N	104°44'31.239"W	2.27	
2024.00	10.860	307.160	2020.44	-32.25	30.28	-31.64	40°06'11.052"N	104°44'31.402"W	1.78	
2116.00	12.510	304.870	2110.53	-44.12	41.21	-46.73	40°06'11.160"N	104°44'31.596"W	1.86	
2208.00	13.870	304.840	2200.10	-57.20	53.21	-63.95	40°06'11.279"N	104°44'31.818"W	1.48	
2299.00	15.200	305.740	2288.19	-71.57	66.41	-82.59	40°06'11.409"N	104°44'32.058"W	1.48	
2390.00	16.160	306.410	2375.80	-87.30	80.89	-102.46	40°06'11.552"N	104°44'32.314"W	1.07	
2482.00	16.770	304.580	2464.03	-103.76	96.03	-123.70	40°06'11.702"N	104°44'32.587"W	0.87	
2573.00	17.120	306.200	2551.08	-120.48	111.39	-145.31	40°06'11.854"N	104°44'32.865"W	0.65	
2664.00	15.560	304.500	2638.40	-136.62	126.21	-166.18	40°06'12.000"N	104°44'33.134"W	1.79	
2756.00	15.860	309.390	2726.96	-152.83	141.18	-186.07	40°06'12.148"N	104°44'33.390"W	1.48	
2848.00	15.820	310.900	2815.47	-170.21	157.37	-205.26	40°06'12.308"N	104°44'33.637"W	0.45	
2938.00	16.100	310.090	2902.00	-187.46	173.44	-224.08	40°06'12.467"N	104°44'33.879"W	0.40	
3029.00	16.880	306.410	2989.26	-204.69	189.40	-244.37	40°06'12.625"N	104°44'34.140"W	1.43	
3121.00	17.490	303.430	3077.16	-221.64	204.95	-266.66	40°06'12.778"N	104°44'34.427"W	1.16	
3212.00	18.150	303.840	3163.79	-238.52	220.38	-289.84	40°06'12.931"N	104°44'34.725"W	0.74	
3304.00	16.650	303.980	3251.58	-255.30	235.72	-312.67	40°06'13.082"N	104°44'35.019"W	1.63	
3389.00	17.690	303.460	3332.79	-270.54	249.65	-333.55	40°06'13.220"N	104°44'35.287"W	1.24	
3474.00	16.290	301.950	3414.08	-285.28	263.08	-354.44	40°06'13.353"N	104°44'35.556"W	1.73	
3559.00	16.630	305.080	3495.59	-299.84	276.38	-374.51	40°06'13.484"N	104°44'35.815"W	1.12	
3645.00	16.920	308.460	3577.94	-315.94	291.24	-394.38	40°06'13.631"N	104°44'36.070"W	1.18	
3730.00	17.540	308.140	3659.12	-332.78	306.84	-414.14	40°06'13.785"N	104°44'36.325"W	0.74	
3815.00	15.120	305.940	3740.69	-348.39	321.26	-433.19	40°06'13.928"N	104°44'36.570"W	2.94	
3901.00	14.580	309.360	3823.82	-362.93	334.71	-450.64	40°06'14.061"N	104°44'36.794"W	1.20	
3986.00	15.190	314.110	3905.97	-378.48	349.24	-466.91	40°06'14.204"N	104°44'37.004"W	1.60	

REFERENCE WELLPATH IDENTIFICATION			
Operator	KERR-MCGEE OIL & GAS ONSHORE LP	Slot	SLOT#09 BADDING 36C-35HZ (350'FSL & 1979'FEL, SEC.26)
Area	COLORADO	Well	BADDING 36C-35HZ
Field	WELD COUNTY (KERR MCGEE)	Wellbore	BADDING 36C-35HZ AWB
Facility	SEC.26-T2N-R66W		

WELLPATH DATA (173 stations)										
MD [ft]	Inclination [°]	Azimuth [°]	TVD [ft]	Vert Sect [ft]	North [ft]	East [ft]	Latitude	Longitude	DLS [°/100ft]	Comments
4071.00	16.140	316.980	3987.81	-395.87	365.63	-482.96	40°06'14.366"N	104°44'37.210"W	1.44	
4157.00	16.050	313.530	4070.44	-413.84	382.56	-499.74	40°06'14.533"N	104°44'37.426"W	1.12	
4242.00	15.100	310.290	4152.32	-430.15	397.81	-516.70	40°06'14.684"N	104°44'37.645"W	1.52	
4327.00	16.340	310.830	4234.14	-446.22	412.79	-534.20	40°06'14.832"N	104°44'37.870"W	1.47	
4412.00	18.690	309.160	4315.19	-463.86	429.21	-553.81	40°06'14.994"N	104°44'38.122"W	2.83	
4498.00	17.940	307.400	4396.84	-481.93	445.96	-575.01	40°06'15.160"N	104°44'38.395"W	1.08	
4583.00	15.560	305.990	4478.22	-497.82	460.61	-594.64	40°06'15.305"N	104°44'38.648"W	2.84	
4669.00	15.510	308.340	4561.08	-512.88	474.52	-612.99	40°06'15.442"N	104°44'38.884"W	0.73	
4754.00	16.240	307.320	4642.84	-528.28	488.78	-631.36	40°06'15.583"N	104°44'39.120"W	0.92	
4840.00	16.620	306.530	4725.33	-544.11	503.39	-650.80	40°06'15.727"N	104°44'39.370"W	0.51	
4926.00	15.090	304.190	4808.06	-558.92	517.00	-669.95	40°06'15.862"N	104°44'39.617"W	1.93	
5012.00	15.870	303.630	4890.94	-572.92	529.80	-689.00	40°06'15.989"N	104°44'39.862"W	0.92	
5097.00	15.420	301.920	4972.79	-586.55	542.22	-708.27	40°06'16.111"N	104°44'40.110"W	0.76	
5183.00	12.190	302.780	5056.29	-598.60	553.18	-725.61	40°06'16.219"N	104°44'40.333"W	3.76	
5268.00	10.310	305.680	5139.66	-608.76	562.48	-739.34	40°06'16.311"N	104°44'40.510"W	2.31	
5354.00	8.310	301.430	5224.52	-617.21	570.21	-750.89	40°06'16.388"N	104°44'40.658"W	2.46	
5439.00	6.480	302.650	5308.81	-623.59	576.00	-760.17	40°06'16.445"N	104°44'40.778"W	2.16	
5524.00	5.300	308.720	5393.36	-629.08	581.04	-767.27	40°06'16.495"N	104°44'40.869"W	1.57	
5609.00	3.730	305.130	5478.09	-633.46	585.09	-772.60	40°06'16.535"N	104°44'40.938"W	1.88	
5695.00	1.920	319.110	5563.99	-636.36	587.79	-775.83	40°06'16.561"N	104°44'40.979"W	2.24	
5780.00	0.410	263.040	5648.97	-637.47	588.83	-777.06	40°06'16.572"N	104°44'40.995"W	2.03	
5865.00	1.750	175.630	5733.95	-636.16	587.50	-777.27	40°06'16.559"N	104°44'40.998"W	2.09	
5950.00	1.820	145.170	5818.91	-633.71	585.09	-776.40	40°06'16.535"N	104°44'40.987"W	1.11	
6035.00	1.860	107.320	5903.87	-632.06	583.57	-774.31	40°06'16.520"N	104°44'40.960"W	1.40	
6120.00	1.260	91.100	5988.84	-631.48	583.15	-772.06	40°06'16.516"N	104°44'40.931"W	0.87	
6206.00	0.950	66.090	6074.83	-631.65	583.42	-770.46	40°06'16.518"N	104°44'40.910"W	0.66	
6291.00	1.770	93.740	6159.80	-631.73	583.62	-768.51	40°06'16.520"N	104°44'40.885"W	1.21	
6376.00	2.340	76.720	6244.75	-631.85	583.93	-765.51	40°06'16.523"N	104°44'40.847"W	0.98	
6461.00	1.190	142.470	6329.71	-631.40	583.63	-763.28	40°06'16.520"N	104°44'40.818"W	2.52	
6547.00	0.800	114.640	6415.70	-630.38	582.67	-762.19	40°06'16.511"N	104°44'40.804"W	0.71	
6717.00	0.830	227.090	6585.69	-629.03	581.34	-762.01	40°06'16.498"N	104°44'40.802"W	0.80	
6802.00	1.150	221.550	6670.68	-628.04	580.28	-763.03	40°06'16.487"N	104°44'40.815"W	0.39	
6887.00	1.170	296.650	6755.67	-627.88	580.03	-764.37	40°06'16.485"N	104°44'40.832"W	1.66	
6973.00	1.480	251.770	6841.64	-628.05	580.08	-766.21	40°06'16.485"N	104°44'40.856"W	1.22	
7015.00	1.620	250.180	6883.63	-627.74	579.71	-767.29	40°06'16.482"N	104°44'40.869"W	0.35	
7058.00	1.650	245.580	6926.61	-627.36	579.24	-768.42	40°06'16.477"N	104°44'40.884"W	0.31	
7100.00	2.610	204.320	6968.58	-626.30	578.12	-769.37	40°06'16.466"N	104°44'40.896"W	4.16	
7143.00	4.510	195.360	7011.50	-623.83	575.60	-770.22	40°06'16.441"N	104°44'40.907"W	4.59	
7186.00	7.810	188.980	7054.25	-619.38	571.08	-771.12	40°06'16.396"N	104°44'40.919"W	7.83	
7228.00	11.530	186.780	7095.64	-612.47	564.09	-772.06	40°06'16.327"N	104°44'40.931"W	8.90	
7271.00	15.170	184.790	7137.47	-602.68	554.21	-773.04	40°06'16.230"N	104°44'40.943"W	8.53	
7314.00	17.890	181.590	7178.69	-590.53	542.00	-773.69	40°06'16.109"N	104°44'40.952"W	6.67	
7356.00	22.340	180.380	7218.12	-576.14	527.57	-773.92	40°06'15.966"N	104°44'40.955"W	10.64	
7399.00	26.350	180.230	7257.29	-558.46	509.84	-774.02	40°06'15.791"N	104°44'40.956"W	9.33	
7441.00	30.860	180.590	7294.15	-538.41	489.74	-774.17	40°06'15.593"N	104°44'40.958"W	10.75	

Actual Wellpath Report

BADDING 36C-35HZ AWP

Page 4 of 8

REFERENCE WELLPATH IDENTIFICATION

Operator	KERR-MCGEE OIL & GAS ONSHORE LP	Slot	SLOT#09 BADDING 36C-35HZ (350'FSL & 1979'FEL, SEC.26)
Area	COLORADO	Well	BADDING 36C-35HZ
Field	WELD COUNTY (KERR MCGEE)	Wellbore	BADDING 36C-35HZ AWB
Facility	SEC.26-T2N-R66W		

WELLPATH DATA (173 stations) † = interpolated/extrapolated station

MD [ft]	Inclination [°]	Azimuth [°]	TVD [ft]	Vert Sect [ft]	North [ft]	East [ft]	Latitude	Longitude	DLS [°/100ft]	Comments
7484.00	35.250	179.900	7330.19	-515.01	466.29	-774.26	40°06'15.361"N	104°44'40.959"W	10.25	
7526.00	39.790	180.290	7363.49	-489.50	440.72	-774.30	40°06'15.108"N	104°44'40.960"W	10.82	
7569.00	43.980	179.590	7395.50	-460.85	412.02	-774.27	40°06'14.825"N	104°44'40.959"W	9.80	
7612.00	49.030	179.390	7425.08	-429.72	380.84	-773.99	40°06'14.516"N	104°44'40.956"W	11.75	
7654.00	53.910	179.960	7451.24	-396.93	347.99	-773.81	40°06'14.192"N	104°44'40.953"W	11.67	
7697.00	59.220	179.600	7474.92	-361.12	312.12	-773.67	40°06'13.837"N	104°44'40.951"W	12.37	
7740.00	63.790	178.470	7495.43	-323.38	274.35	-773.02	40°06'13.464"N	104°44'40.943"W	10.88	
7782.00	67.380	177.030	7512.79	-285.16	236.14	-771.51	40°06'13.086"N	104°44'40.924"W	9.10	
7825.00	70.860	176.270	7528.11	-244.99	196.04	-769.16	40°06'12.690"N	104°44'40.893"W	8.26	
7870.00	74.070	176.060	7541.67	-202.09	153.23	-766.29	40°06'12.267"N	104°44'40.856"W	7.15	
7913.00	78.800	175.230	7551.75	-160.30	111.56	-763.12	40°06'11.855"N	104°44'40.816"W	11.16	
7955.00	82.830	175.100	7558.45	-118.86	70.26	-759.62	40°06'11.447"N	104°44'40.771"W	9.60	
7998.00	84.380	174.850	7563.24	-76.14	27.69	-755.88	40°06'11.027"N	104°44'40.722"W	3.65	
8034.00†	85.591	174.955	7566.39	-40.29	-8.03	-752.69	40°06'10.674"N	104°44'40.681"W	3.38	7" Casing Point
8053.00	86.230	175.010	7567.75	-21.34	-26.91	-751.03	40°06'10.487"N	104°44'40.660"W	3.38	
8114.00	88.150	174.630	7570.74	39.56	-87.58	-745.53	40°06'09.887"N	104°44'40.589"W	3.21	
8185.00	88.830	174.350	7572.61	110.50	-158.23	-738.72	40°06'09.189"N	104°44'40.502"W	1.04	
8256.00	90.860	175.650	7572.80	181.48	-228.95	-732.53	40°06'08.490"N	104°44'40.422"W	3.40	
8309.00	90.730	173.750	7572.06	234.45	-281.72	-727.64	40°06'07.969"N	104°44'40.359"W	3.59	
8394.00	90.210	174.200	7571.37	319.37	-366.25	-718.72	40°06'07.134"N	104°44'40.244"W	0.81	
8511.00	88.950	172.000	7572.22	436.18	-482.39	-704.66	40°06'05.986"N	104°44'40.063"W	2.17	
8583.00	88.550	170.810	7573.80	507.89	-553.56	-693.90	40°06'05.283"N	104°44'39.925"W	1.74	
8650.00	90.120	171.990	7574.57	574.64	-619.80	-683.89	40°06'04.628"N	104°44'39.796"W	2.93	
8735.00	90.060	173.120	7574.44	659.45	-704.08	-672.87	40°06'03.795"N	104°44'39.654"W	1.33	
8820.00	91.170	174.680	7573.53	744.37	-788.59	-663.84	40°06'02.960"N	104°44'39.538"W	2.25	
8905.00	91.810	175.870	7571.32	829.32	-873.27	-656.84	40°06'02.123"N	104°44'39.448"W	1.59	
8990.00	90.800	175.370	7569.38	914.29	-958.00	-650.35	40°06'01.286"N	104°44'39.364"W	1.33	
9075.00	90.860	176.650	7568.15	999.28	-1042.78	-644.44	40°06'00.448"N	104°44'39.288"W	1.51	
9161.00	89.960	175.210	7567.53	1085.27	-1128.56	-638.33	40°05'59.600"N	104°44'39.209"W	1.97	
9246.00	90.580	176.510	7567.13	1170.27	-1213.33	-632.20	40°05'58.763"N	104°44'39.130"W	1.69	
9331.00	90.670	176.470	7566.21	1255.26	-1298.17	-626.99	40°05'57.924"N	104°44'39.063"W	0.12	
9416.00	91.600	176.690	7564.52	1340.24	-1383.00	-621.92	40°05'57.086"N	104°44'38.998"W	1.12	
9502.00	90.000	177.210	7563.32	1426.23	-1468.87	-617.35	40°05'56.237"N	104°44'38.939"W	1.96	
9587.00	89.870	177.750	7563.42	1511.21	-1553.79	-613.61	40°05'55.398"N	104°44'38.891"W	0.65	
9672.00	87.250	177.820	7565.55	1596.15	-1638.69	-610.33	40°05'54.559"N	104°44'38.849"W	3.08	
9757.00	87.310	175.750	7569.59	1681.04	-1723.45	-605.57	40°05'53.722"N	104°44'38.787"W	2.43	
9843.00	88.300	175.960	7572.88	1766.98	-1809.16	-599.36	40°05'52.874"N	104°44'38.708"W	1.18	
9928.00	89.160	175.280	7574.77	1851.95	-1893.89	-592.87	40°05'52.037"N	104°44'38.624"W	1.29	
10013.00	88.270	175.690	7576.67	1936.92	-1978.61	-586.18	40°05'51.200"N	104°44'38.538"W	1.15	
10108.00	89.810	174.890	7578.26	2031.89	-2073.27	-578.38	40°05'50.265"N	104°44'38.438"W	1.83	
10183.00	90.700	175.330	7577.93	2106.87	-2148.00	-571.98	40°05'49.526"N	104°44'38.355"W	1.32	
10269.00	91.570	175.760	7576.23	2192.84	-2233.72	-565.30	40°05'48.679"N	104°44'38.269"W	1.13	
10354.00	90.920	175.370	7574.38	2277.81	-2318.44	-558.73	40°05'47.842"N	104°44'38.185"W	0.89	
10434.00	90.270	175.740	7573.55	2357.80	-2398.20	-552.53	40°05'47.054"N	104°44'38.105"W	0.93	
10519.00	91.220	176.440	7572.44	2442.79	-2482.99	-546.74	40°05'46.216"N	104°44'38.030"W	1.39	

Actual Wellpath Report

BADDING 36C-35HZ AWP

Page 5 of 8

REFERENCE WELLPATH IDENTIFICATION

Operator	KERR-MCGEE OIL & GAS ONSHORE LP	Slot	SLOT#09 BADDING 36C-35HZ (350'FSL & 1979'FEL, SEC.26)
Area	COLORADO	Well	BADDING 36C-35HZ
Field	WELD COUNTY (KERR MCGEE)	Wellbore	BADDING 36C-35HZ AWB
Facility	SEC.26-T2N-R66W		

WELLPATH DATA (173 stations)

MD [ft]	Inclination [°]	Azimuth [°]	TVD [ft]	Vert Sect [ft]	North [ft]	East [ft]	Latitude	Longitude	DLS [°/100ft]	Comments
10604.00	91.690	176.130	7570.29	2527.76	-2567.78	-541.23	40°05'45.378"N	104°44'37.959"W	0.66	
10689.00	91.130	177.280	7568.19	2612.73	-2652.62	-536.35	40°05'44.539"N	104°44'37.897"W	1.50	
10775.00	89.040	178.510	7568.07	2698.70	-2738.55	-533.19	40°05'43.690"N	104°44'37.856"W	2.82	
10860.00	88.610	178.210	7569.81	2783.62	-2823.50	-530.76	40°05'42.851"N	104°44'37.825"W	0.62	
10945.00	89.750	177.600	7571.03	2868.58	-2908.43	-527.65	40°05'42.011"N	104°44'37.785"W	1.52	
11030.00	89.100	177.470	7571.88	2953.56	-2993.35	-524.00	40°05'41.172"N	104°44'37.737"W	0.78	
11116.00	90.150	175.960	7572.44	3039.55	-3079.20	-519.07	40°05'40.324"N	104°44'37.674"W	2.14	
11201.00	90.770	176.950	7571.76	3124.54	-3164.03	-513.81	40°05'39.485"N	104°44'37.606"W	1.37	
11286.00	90.800	176.590	7570.59	3209.53	-3248.89	-509.02	40°05'38.647"N	104°44'37.545"W	0.42	
11371.00	90.990	176.570	7569.27	3294.52	-3333.73	-503.95	40°05'37.809"N	104°44'37.479"W	0.22	
11456.00	91.410	177.070	7567.49	3379.50	-3418.58	-499.24	40°05'36.970"N	104°44'37.419"W	0.77	
11542.00	90.550	176.090	7566.02	3465.48	-3504.41	-494.11	40°05'36.122"N	104°44'37.353"W	1.52	
11627.00	90.580	175.710	7565.18	3550.48	-3589.19	-488.03	40°05'35.284"N	104°44'37.275"W	0.45	
11712.00	91.820	175.160	7563.40	3635.45	-3673.90	-481.27	40°05'34.447"N	104°44'37.188"W	1.60	
11797.00	92.460	175.270	7560.22	3720.37	-3758.54	-474.18	40°05'33.610"N	104°44'37.096"W	0.76	
11883.00	92.860	175.820	7556.23	3806.27	-3844.19	-467.51	40°05'32.764"N	104°44'37.010"W	0.79	
11968.00	91.510	176.230	7552.99	3891.21	-3928.92	-461.62	40°05'31.927"N	104°44'36.935"W	1.66	
12053.00	91.600	175.120	7550.68	3976.17	-4013.65	-455.22	40°05'31.089"N	104°44'36.852"W	1.31	
12138.00	90.330	174.700	7549.25	4061.13	-4098.30	-447.68	40°05'30.253"N	104°44'36.755"W	1.57	
12224.00	88.820	175.290	7549.89	4147.10	-4183.97	-440.17	40°05'29.406"N	104°44'36.659"W	1.89	
12309.00	89.100	174.610	7551.43	4232.06	-4268.62	-432.69	40°05'28.570"N	104°44'36.562"W	0.87	
12394.00	90.310	175.140	7551.87	4317.03	-4353.28	-425.10	40°05'27.733"N	104°44'36.465"W	1.55	
12480.00	90.800	175.980	7551.04	4403.02	-4439.02	-418.44	40°05'26.886"N	104°44'36.379"W	1.13	
12565.00	91.290	177.310	7549.49	4488.00	-4523.85	-413.47	40°05'26.048"N	104°44'36.315"W	1.67	
12650.00	90.000	178.310	7548.53	4572.96	-4608.78	-410.22	40°05'25.208"N	104°44'36.273"W	1.92	
12736.00	89.560	178.670	7548.86	4658.90	-4694.75	-407.95	40°05'24.359"N	104°44'36.244"W	0.66	
12821.00	89.350	178.490	7549.67	4743.83	-4779.72	-405.85	40°05'23.519"N	104°44'36.217"W	0.33	
12906.00	89.470	178.980	7550.55	4828.75	-4864.70	-403.97	40°05'22.679"N	104°44'36.193"W	0.59	
12991.00	89.290	177.180	7551.47	4913.70	-4949.64	-401.12	40°05'21.840"N	104°44'36.156"W	2.13	
13075.00	89.900	177.030	7552.06	4997.69	-5033.53	-396.88	40°05'21.011"N	104°44'36.101"W	0.75	
13160.00	89.560	176.730	7552.46	5082.69	-5118.40	-392.26	40°05'20.172"N	104°44'36.042"W	0.53	
13245.00	89.530	175.380	7553.13	5167.68	-5203.20	-386.41	40°05'19.334"N	104°44'35.967"W	1.59	
13330.00	90.550	175.340	7553.08	5252.67	-5287.92	-379.53	40°05'18.497"N	104°44'35.878"W	1.20	
13415.00	90.580	173.800	7552.24	5337.62	-5372.53	-371.49	40°05'17.661"N	104°44'35.775"W	1.81	
13500.00	91.630	176.030	7550.60	5422.57	-5457.17	-363.96	40°05'16.824"N	104°44'35.678"W	2.90	
13586.00	91.320	175.970	7548.38	5508.54	-5542.94	-357.96	40°05'15.977"N	104°44'35.601"W	0.37	
13660.00	91.010	176.540	7546.88	5582.53	-5616.76	-353.13	40°05'15.247"N	104°44'35.538"W	0.88	Last BHI MWD+IFR Surveys
13715.00	91.010	176.540	7545.91	5637.52	-5671.65	-349.81	40°05'14.705"N	104°44'35.496"W	0.00	Projection to Bit

REFERENCE WELLPATH IDENTIFICATION			
Operator	KERR-MCGEE OIL & GAS ONSHORE LP	Slot	SLOT#09 BADDING 36C-35HZ (350'FSL & 1979'FEL, SEC.26)
Area	COLORADO	Well	BADDING 36C-35HZ
Field	WELD COUNTY (KERR MCGEE)	Wellbore	BADDING 36C-35HZ AWB
Facility	SEC.26-T2N-R66W		

HOLE & CASING SECTIONS - Ref Wellbore: BADDING 36C-35HZ AWB Ref Wellpath: BADDING 36C-35HZ AWP									
String/Diameter	Start MD [ft]	End MD [ft]	Interval [ft]	Start TVD [ft]	End TVD [ft]	Start N/S [ft]	Start E/W [ft]	End N/S [ft]	End E/W [ft]
13.5in Open Hole	17.00	1340.00	1323.00	17.00	1339.93	0.00	0.00	-6.74	9.84
9.625in Casing Surface	17.00	1330.00	1313.00	17.00	1329.93	0.00	0.00	-6.64	9.84
8.75in Open Hole	1340.00	8044.00	6704.00	1339.93	7567.13	-6.74	9.84	-17.96	-751.82
7in Casing Intermediate	17.00	8034.00	8017.00	17.00	7566.39	0.00	0.00	-8.03	-752.69
6.125in Open Hole	8044.00	13715.00	5671.00	7567.13	7545.91	-17.96	-751.82	-5671.65	-349.81

TARGETS									
Name	MD [ft]	TVD [ft]	North [ft]	East [ft]	Grid East [US ft]	Grid North [US ft]	Latitude	Longitude	Shape
BADDING SECTION 26 LINES		-3.00	5.90	1275.08	3213324.01	1281285.67	40°06'10.811"N	104°44'14.586"W	polygon
BADDING SECTION 35 LINES		-3.00	5.90	1275.08	3213324.01	1281285.67	40°06'10.811"N	104°44'14.586"W	polygon
SHAFAER USX W 35-6 (150' CIRCLE)		7331.00	-2116.02	-1671.66	3210395.64	1279138.73	40°05'49.842"N	104°44'52.506"W	circle
SHAFAER 31-35 (150' CIRCLE)		7361.00	-825.78	-332.49	3211723.68	1280440.32	40°06'02.593"N	104°44'35.274"W	circle
SHAFAER USX W 35-7 (150' CIRCLE)		7400.00	-2101.79	184.64	3212251.68	1279168.83	40°05'49.983"N	104°44'28.619"W	circle
SHAFAER 12-35 (150' CIRCLE)		7409.00	-2202.62	-2733.23	3209334.90	1279043.06	40°05'48.985"N	104°45'06.166"W	circle
BADDING USX W 35-3 (150' CIRCLE)		7418.00	-1161.20	-1451.96	3210607.16	1280095.35	40°05'59.277"N	104°44'49.679"W	circle
BADDING USX W 35-8 (150' CIRCLE)		7421.00	-2154.61	1241.19	3213308.59	1279125.04	40°05'49.460"N	104°44'15.023"W	circle
BADDING USX W 35-1 (150' CIRCLE)		7432.00	-1091.55	1224.47	3213282.79	1280187.87	40°05'59.966"N	104°44'15.238"W	circle
BADDING 36C-35HZ BHL ON PLAT (1'FSL & 2342'FEL, SEC.35) REV-1		7569.00	-5697.88	-353.66	3211744.16	1275568.41	40°05'14.446"N	104°44'35.545"W	point
BADDING 36C-5HZ LANDBOX		7569.00	0.02	0.02	3212049.10	1281268.89	40°06'10.753"N	104°44'30.995"W	polygon

REFERENCE WELLPATH IDENTIFICATION			
Operator	KERR-MCGEE OIL & GAS ONSHORE LP	Slot	SLOT#09 BADDING 36C-35HZ (350'FSL & 1979'FEL, SEC.26)
Area	COLORADO	Well	BADDING 36C-35HZ
Field	WELD COUNTY (KERR MCGEE)	Wellbore	BADDING 36C-35HZ AWB
Facility	SEC.26-T2N-R66W		

WELLPATH COMPOSITION - Ref Wellbore: BADDING 36C-35HZ AWB Ref Wellpath: BADDING 36C-35HZ AWP				
Start MD [ft]	End MD [ft]	Positional Uncertainty Model	Log Name/Comment	Wellbore
17.00	1244.00	Generic gyro - continuous (Standard)	MS ENERGY SERVICES GYRO SURVEYS <117-1244>	BADDING 36C-35HZ AWB
1244.00	7998.00	NaviTrak (MAGCORR,IFR)	BHI MWD+IFR SURVEYS 8 3/4" HOLE <1371-7998>	BADDING 36C-35HZ AWB
7998.00	13660.00	NaviTrak (MAGCORR,IFR)	BHI MWD+IFR SURVEY 6 1/8" HOLE <8053-13660>	BADDING 36C-35HZ AWB
13660.00	13715.00	Blind Drilling (std)	Projection to bit	BADDING 36C-35HZ AWB

Actual Wellpath Report

BADDING 36C-35HZ AWP

Page 8 of 8

REFERENCE WELLPATH IDENTIFICATION			
Operator	KERR-MCGEE OIL & GAS ONSHORE LP	Slot	SLOT#09 BADDING 36C-35HZ (350'FSL & 1979'FEL, SEC.26)
Area	COLORADO	Well	BADDING 36C-35HZ
Field	WELD COUNTY (KERR MCGEE)	Wellbore	BADDING 36C-35HZ AWB
Facility	SEC.26-T2N-R66W		

WELLPATH COMMENTS				
MD [ft]	Inclination [°]	Azimuth [°]	TVD [ft]	Comment
17.00	0.000	124.120	17.00	Tie-On
117.00	0.610	124.120	117.00	Begin GYRO Surveys
1244.00	0.450	188.250	1243.93	Tie-Into GYRO Surveys
1371.00	0.660	178.790	1370.93	Begin BHI MWD+IFR Surveys
8034.00	85.591	174.955	7566.39	7" Casing Point
13660.00	91.010	176.540	7546.88	Last BHI MWD+IFR Surveys
13715.00	91.010	176.540	7545.91	Projection to Bit