

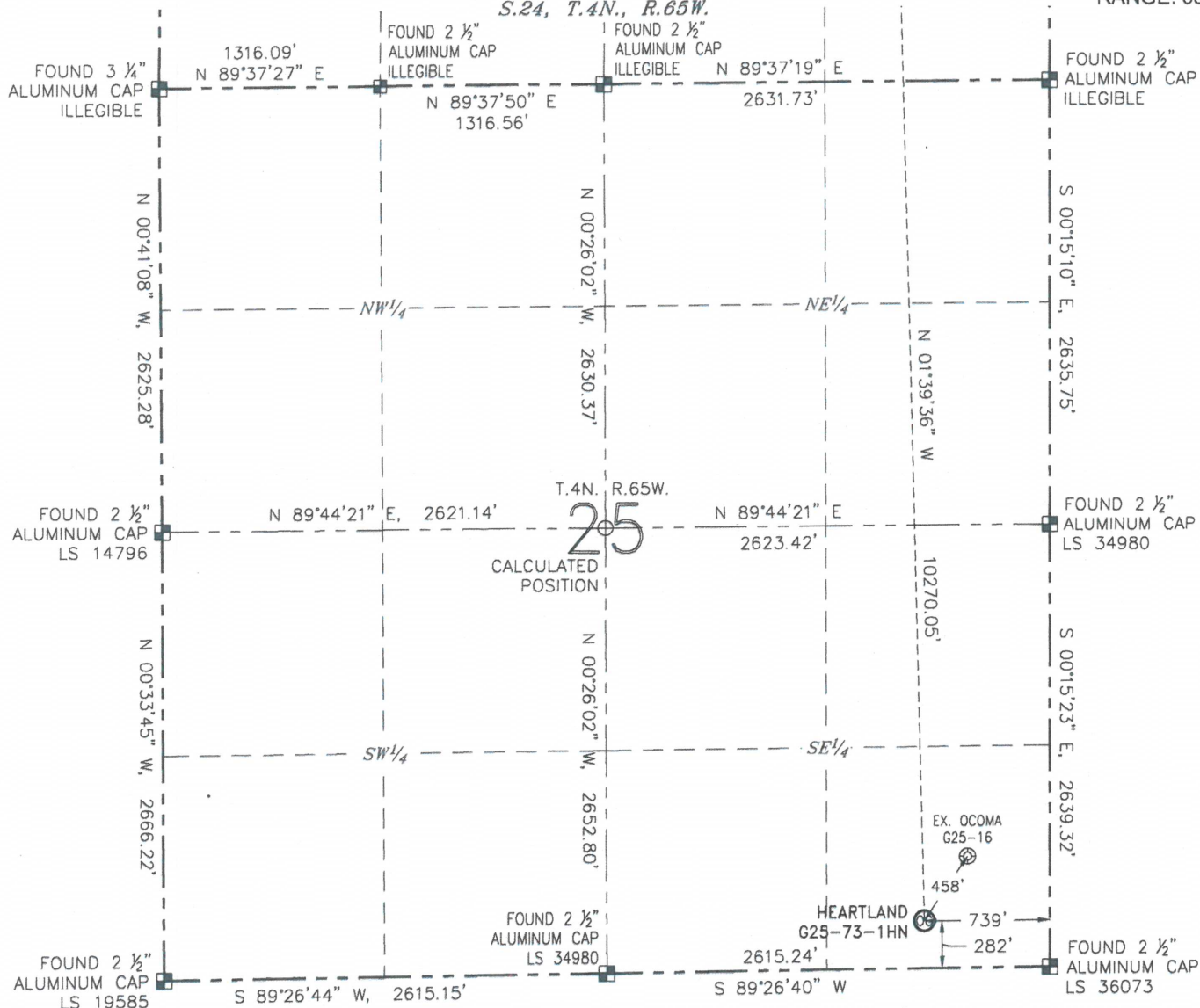
## WELL LOCATION CERTIFICATE

HEARTLAND G25-73-1HN

(SHEET 1 OF 2)

SECTION: 25  
TOWNSHIP: 4N  
RANGE: 65W

S.24, T.4N., R.65W.



## NOTES:

1. BEARINGS ARE GRID BEARINGS OF THE COLORADO STATE PLANE COORDINATE SYSTEM, NORTH ZONE, NAD 83. THE LINEAL DIMENSIONS SHOWN HEREON ARE BASED UPON THE "U.S. SURVEY FOOT".
2. GROUND ELEVATIONS ARE BASED UPON NGS OPUS SOLUTION NAVD 88 DATUM COMPUTED USING GEOID09.
3. IMPROVEMENTS: SEE LOCATION DRAWING FOR ALL VISIBLE IMPROVEMENTS WITHIN 500' OF THE DISTURBED AREA.
4. SURFACE USE: RANGELAND.
5. INSTRUMENT OPERATOR: ANTONIO SMITH.
6. THE NEAREST EXISTING WELL: OCOMA G25-16, 458' NE.

IN ACCORDANCE WITH A REQUEST FROM MATT VERBIT WITH NOBLE ENERGY INC., R&R ENGINEERS-SURVEYORS, INC. HAS DETERMINED THE SURFACE HOLE LOCATION OF THE HEARTLAND G25-73-1HN WELL TO BE 282' FROM THE SOUTH LINE AND 739' FROM THE EAST LINE AS MEASURED AT RIGHT ANGLES FROM THE SECTION LINES OF SECTION 25, TOWNSHIP 4 NORTH, RANGE 65 WEST, AND THE BOTTOM HOLE LOCATION TO BE 75' FROM THE NORTH LINE AND 990' FROM THE EAST LINE AS MEASURED AT RIGHT ANGLES FROM THE SECTION LINES OF SECTION 24, TOWNSHIP 4 NORTH, RANGE 65 WEST OF THE 6TH PRINCIPAL MERIDIAN, WELD COUNTY, COLORADO.

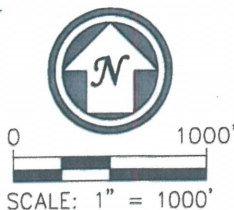
I HEREBY CERTIFY THAT THIS WELL LOCATION CERTIFICATE WAS PREPARED BY ME, OR UNDER MY DIRECT SUPERVISION, THAT THE FIELD WORK WAS COMPLETED ON 09/30/2013, FOR AND ON BEHALF OF NOBLE ENERGY INC., THAT IT IS NOT A LAND SURVEY PLAT OR AN IMPROVEMENT SURVEY PLAT, AND THAT IT IS NOT TO BE RELIED UPON FOR ESTABLISHMENT OF FENCES, BUILDINGS, OR OTHER FUTURE IMPROVEMENT LINES.

## SURFACE HOLE LOCATION

LATITUDE: N 40.27673°  
LONGITUDE: W 104.60499°  
PDOP: 1.6  
ELEVATION: 4835'  
1/4-1/4: SE 1/4 SE 1/4

## BOTTOM HOLE LOCATION

LATITUDE: N 40.30492°  
LONGITUDE: W 104.60568°



## LEGEND

- ⊗ PROPOSED WELL ⊗ BOTTOM HOLE ○ CALCULATED POSITION  
⊗ EXISTING WELL ⊗ FOUND MONUMENT

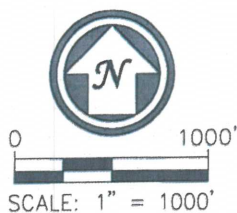
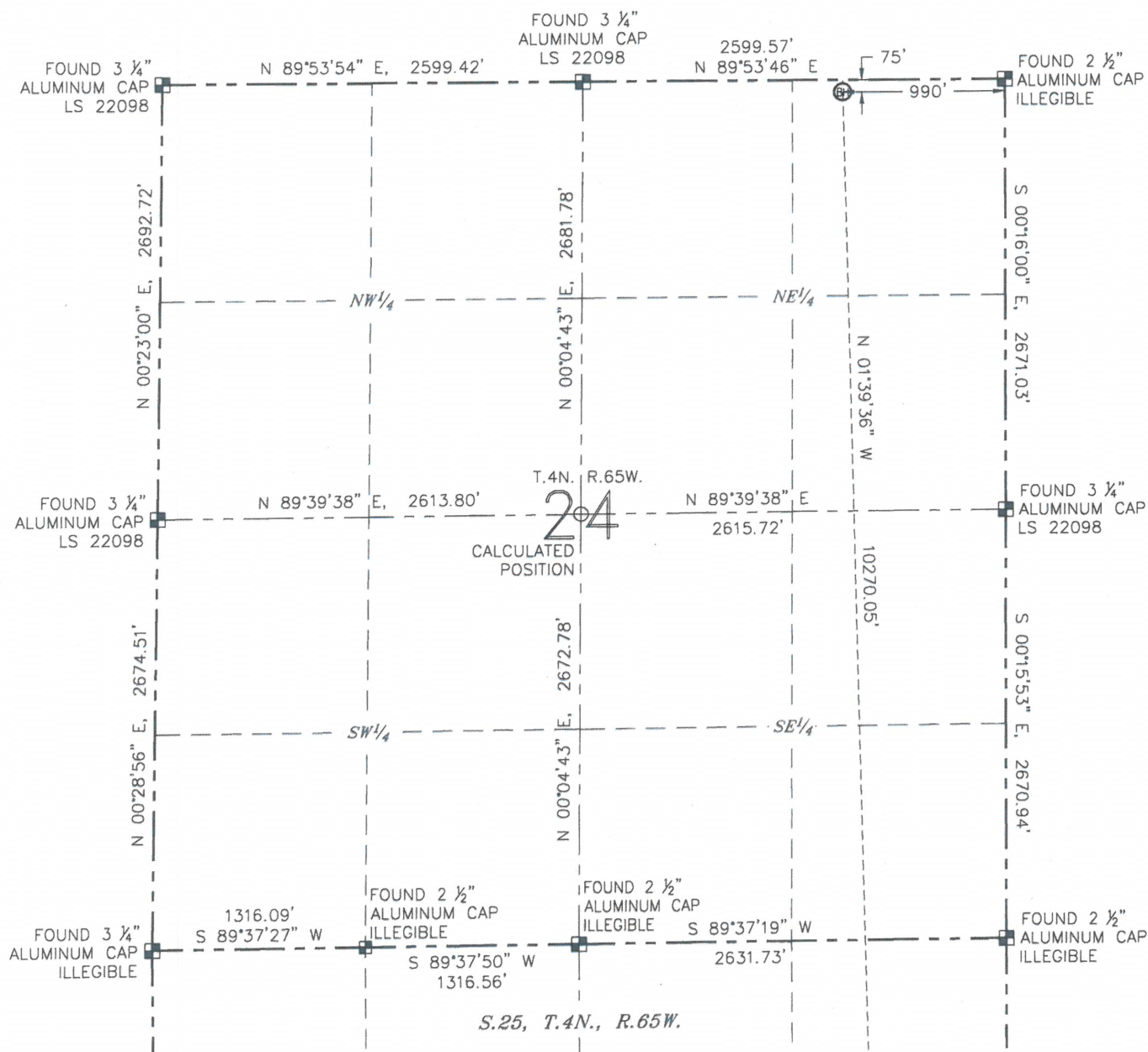
ANTONIO W. SMITH, PLS 38320  
FOR AND ON BEHALF OF R&R ENGINEERS-SURVEYORS, INC. DATE: 01/09/2014  
JOB NO.: NE13301



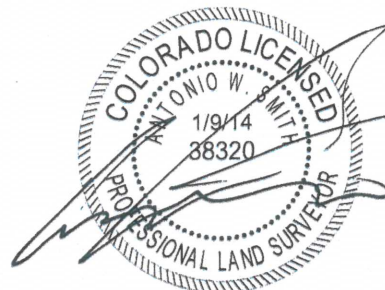
# WELL LOCATION CERTIFICATE

HEARTLAND G25-73-1HN  
(SHEET 2 OF 2)

SECTION: 25  
TOWNSHIP: 4N  
RANGE: 65W



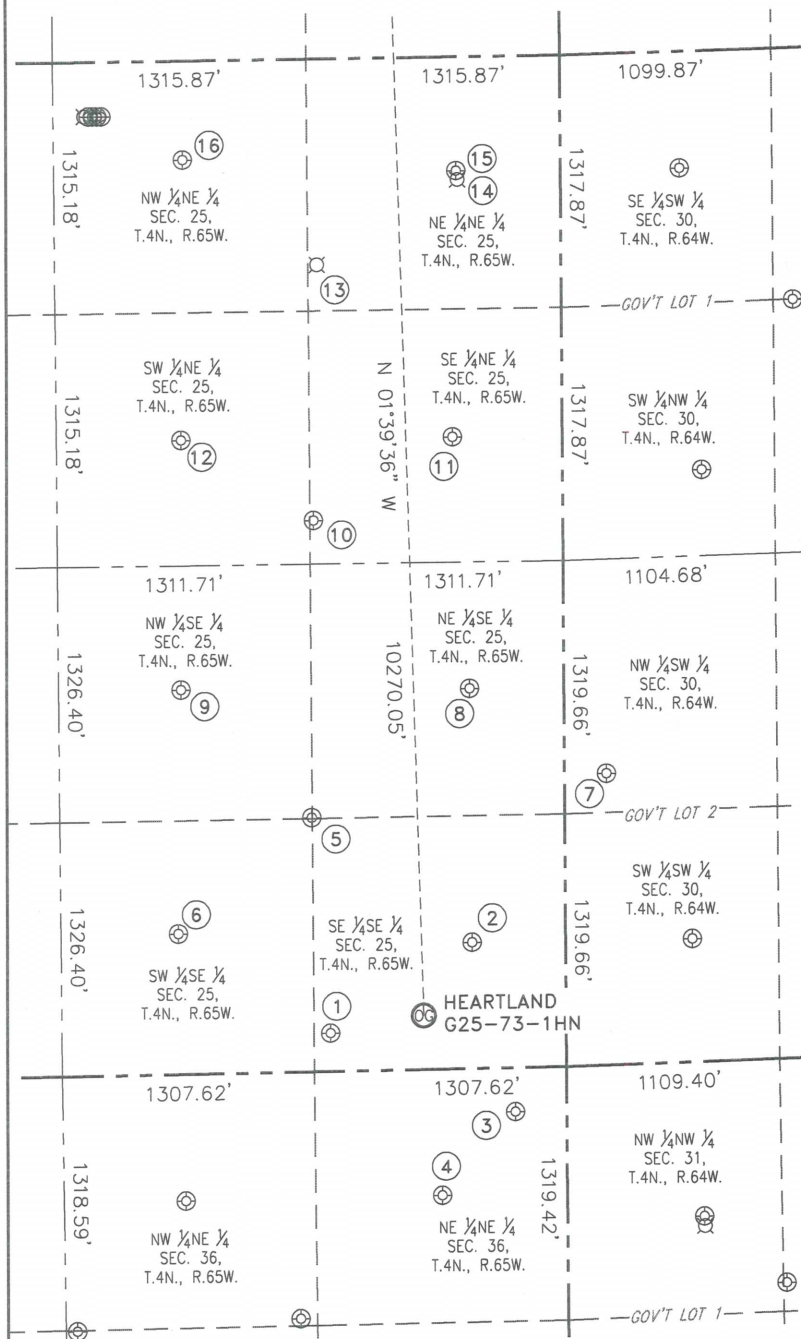
- LEGEND**
- ⊗ PROPOSED WELL
  - ⊙ EXISTING WELL
  - FOUND MONUMENT
  - CALCULATED POSITION



ANTONIO W. SMITH, PLS 38320  
FOR AND ON BEHALF OF R&R ENGINEERS-SURVEYORS, INC. DATE: 01/09/2014  
JOB NO.: NE13301

# **SITE SKETCH** **HEARTLAND G25-73-1HN** **(SHEET 1 OF 2)**

SECTION: 25  
TOWNSHIP: 4N  
RANGE: 65W



- ① SHELTON G36-27  
SE $\frac{1}{4}$ SE $\frac{1}{4}$   
201' FSL 1223' FEL  
LAT: N 40.27651"  
LONG: W 104.60672"  
PDOP: 1.3  
ELEV: 4830'
- ② OCOMA G25-16  
SE $\frac{1}{4}$ SE $\frac{1}{4}$   
662' FSL 486' FEL  
LAT: N 40.27777"  
LONG: W 104.60407"  
PDOP: 1.4  
ELEV: 4843'
- ③ PEDRO STATE C31-79HN  
NE $\frac{1}{4}$ NE $\frac{1}{4}$   
229' FNL 268' FEL  
LAT: N 40.27533"  
LONG: W 104.60331"  
PDOP: 1.8  
ELEV: 4846'
- ④ GERRITY STATE G36-1  
NE $\frac{1}{4}$ NE $\frac{1}{4}$   
657' FNL 650' FEL  
LAT: N 40.27416"  
LONG: W 104.60468"  
PDOP: 1.9  
ELEV: 4844'
- ⑤ OCOMA G25-23  
NW $\frac{1}{4}$ SE $\frac{1}{4}$   
1328' FSL 1313' FEL  
LAT: N 40.27960"  
LONG: W 104.60702"  
PDOP: 1.5  
ELEV: 4822'
- ⑥ OCOMA G25-15  
SW $\frac{1}{4}$ SE $\frac{1}{4}$   
736' FSL 2010' FEL  
LAT: N 40.27798"  
LONG: W 104.60953"  
PDOP: 2.1  
ELEV: 4821'
- ⑦ BROSNAHAN 13-30  
NW $\frac{1}{4}$ SW $\frac{1}{4}$   
1523' FSL 218' FWL  
LAT: N 40.28015"  
LONG: W 104.60153"  
PDOP: 1.6  
ELEV: 4843'
- ⑧ OCOMA G25-09  
NE $\frac{1}{4}$ SE $\frac{1}{4}$   
1982' FSL 490' FEL  
LAT: N 40.28140"  
LONG: W 104.60406"  
PDOP: 1.6  
ELEV: 4840'
- ⑨ OCOMA G25-10  
NW $\frac{1}{4}$ SE $\frac{1}{4}$   
2003' FSL 1987' FEL  
LAT: N 40.28146"  
LONG: W 104.60942"  
PDOP: 1.5  
ELEV: 4810'
- ⑩ SHELTON G25-22  
SE $\frac{1}{4}$ NE $\frac{1}{4}$   
2406' FNL 1295' FEL  
LAT: N 40.28385"  
LONG: W 104.60693"  
PDOP: 1.5  
ELEV: 4825'
- ⑪ PLUSS G25-8  
SW $\frac{1}{4}$ NE $\frac{1}{4}$   
1979' FNL 1979' FEL  
LAT: N 40.28502"  
LONG: W 104.60937"  
PDOP: 1.5  
ELEV: 4812'
- ⑫ SHELTON G25-17  
NE $\frac{1}{4}$ NE $\frac{1}{4}$   
PER COGCC:  
1076' FNL  
1268' FEL  
PLUGGED &  
ABANDONED
- ⑬ SHELTON G25-27D  
NE $\frac{1}{4}$ NE $\frac{1}{4}$   
PER COGCC:  
641' FNL  
537' FEL  
PLUGGED &  
ABANDONED
- ⑭ CPC PLUSS 25-01  
NE $\frac{1}{4}$ NE $\frac{1}{4}$   
594' FNL 543' FEL  
LAT: N 40.28881"  
LONG: W 104.60419"  
PDOP: 1.7  
ELEV: 4828'
- ⑮ SHELTON G25-2  
NW $\frac{1}{4}$ NE $\frac{1}{4}$   
517' FNL 1962' FEL  
LAT: N 40.28904"  
LONG: W 104.60928"  
PDOP: 1.4  
ELEV: 4805'

## **NOTES:**

1. THIS SKETCH DOES NOT REPRESENT A BOUNDARY SURVEY.
2. HORIZONTAL DATUM IS NAD 83.
3. VERTICAL DATUM IS NAVD 88.



0 1000'  
SCALE: 1" = 1000'

## **LEGEND**

- ⊕ PROPOSED WELL
- ⊙ BOTTOM HOLE
- ⊗ EXISTING WELL
- ⊗ ABANDONED WELL

DATE: 01/09/2014  
JOB NO.: NE13301

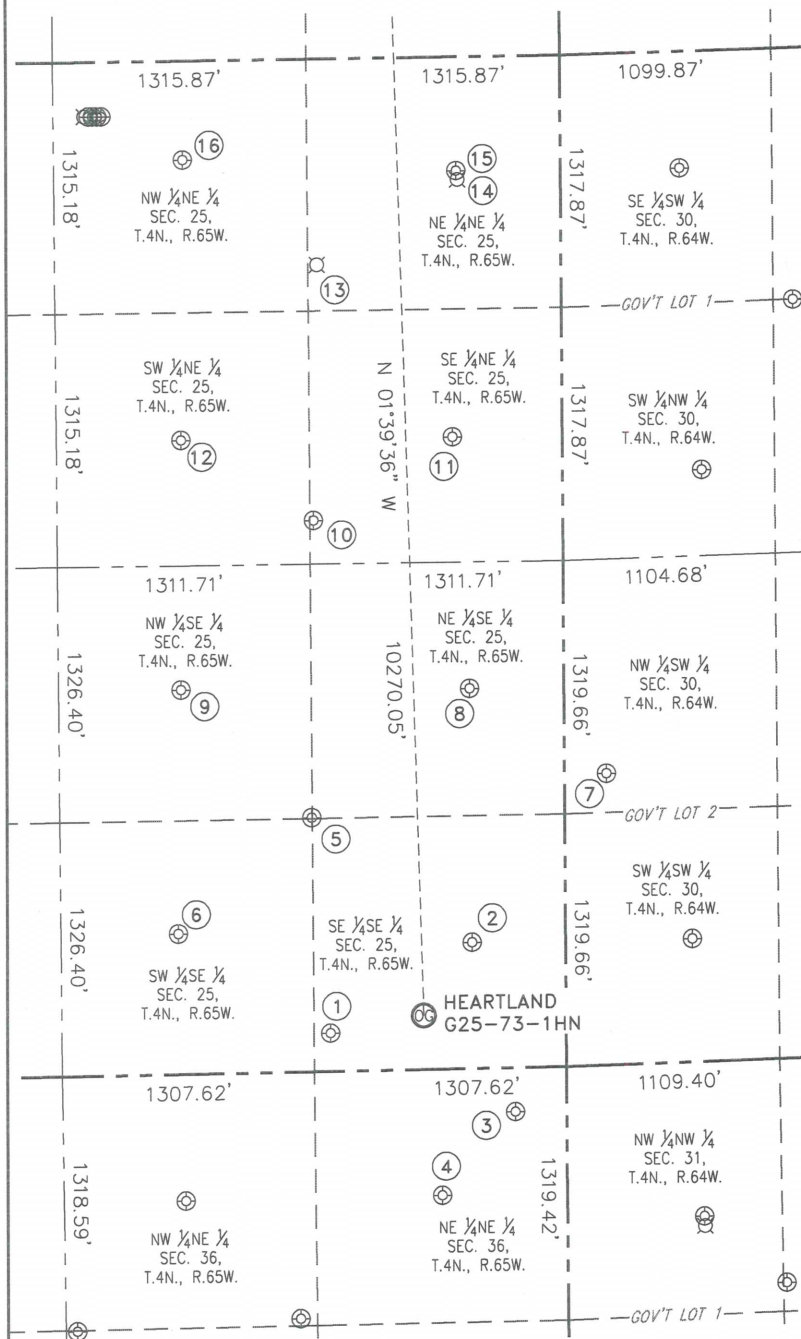


# SITE SKETCH

## HEARTLAND G25-73-1HN

(SHEET 1 OF 2)

SECTION: 25  
TOWNSHIP: 4N  
RANGE: 65W



### NOTES:

- THIS SKETCH DOES NOT REPRESENT A BOUNDARY SURVEY.
- HORIZONTAL DATUM IS NAD 83.
- VERTICAL DATUM IS NAVD 88.



0 1000'

SCALE: 1" = 1000'

### LEGEND

- ⊕ PROPOSED WELL
- ⊙ BOTTOM HOLE
- ⊗ EXISTING WELL
- ⊘ ABANDONED WELL

- 1  
SHELTON G36-27  
SE $\frac{1}{4}$ SE $\frac{1}{4}$   
201' FSL 1223' FEL  
LAT: N 40.27651"  
LONG: W 104.60672"  
PDOP: 1.3  
ELEV: 4830'
- 2  
OCOMA G25-16  
SE $\frac{1}{4}$ SE $\frac{1}{4}$   
662' FSL 486' FEL  
LAT: N 40.27777"  
LONG: W 104.60407"  
PDOP: 1.4  
ELEV: 4843'
- 3  
PEDRO STATE C31-79HN  
NE $\frac{1}{4}$ NE $\frac{1}{4}$   
229' FNL 268' FEL  
LAT: N 40.27533"  
LONG: W 104.60331"  
PDOP: 1.8  
ELEV: 4846'
- 4  
GERRITY STATE G36-1  
NE $\frac{1}{4}$ NE $\frac{1}{4}$   
657' FNL 650' FEL  
LAT: N 40.27416"  
LONG: W 104.60468"  
PDOP: 1.9  
ELEV: 4844'
- 5  
OCOMA G25-23  
NW $\frac{1}{4}$ SE $\frac{1}{4}$   
1328' FSL 1313' FEL  
LAT: N 40.27960"  
LONG: W 104.60702"  
PDOP: 1.5  
ELEV: 4822'
- 6  
OCOMA G25-15  
SW $\frac{1}{4}$ SE $\frac{1}{4}$   
736' FSL 2010' FEL  
LAT: N 40.27798"  
LONG: W 104.60953"  
PDOP: 2.1  
ELEV: 4821'
- 7  
BROSNAHAN 13-30  
NW $\frac{1}{4}$ SW $\frac{1}{4}$   
1523' FSL 218' FWL  
LAT: N 40.28015"  
LONG: W 104.60153"  
PDOP: 1.6  
ELEV: 4843'
- 8  
OCOMA G25-09  
NE $\frac{1}{4}$ SE $\frac{1}{4}$   
1982' FSL 490' FEL  
LAT: N 40.28140"  
LONG: W 104.60406"  
PDOP: 1.6  
ELEV: 4840'
- 9  
OCOMA G25-10  
NW $\frac{1}{4}$ SE $\frac{1}{4}$   
2003' FSL 1987' FEL  
LAT: N 40.28146"  
LONG: W 104.60942"  
PDOP: 1.5  
ELEV: 4810'
- 10  
SHELTON G25-22  
SE $\frac{1}{4}$ NE $\frac{1}{4}$   
2406' FNL 1295' FEL  
LAT: N 40.28385"  
LONG: W 104.60693"  
PDOP: 1.5  
ELEV: 4825'
- 11  
PLUSS G25-8  
SE $\frac{1}{4}$ NE $\frac{1}{4}$   
1984' FNL 571' FEL  
LAT: N 40.28500"  
LONG: W 104.60432"  
PDOP: 1.3  
ELEV: 4825'
- 12  
PLUSS G25-7  
SW $\frac{1}{4}$ NE $\frac{1}{4}$   
1979' FNL 1979' FEL  
LAT: N 40.28502"  
LONG: W 104.60937"  
PDOP: 1.5  
ELEV: 4812'
- 13  
SHELTON G25-17  
NE $\frac{1}{4}$ NE $\frac{1}{4}$   
PER COGCC:  
1076' FNL  
1268' FEL  
PLUGGED &  
ABANDONED
- 14  
SHELTON G25-27D  
NE $\frac{1}{4}$ NE $\frac{1}{4}$   
PER COGCC:  
641' FNL  
537' FEL  
PLUGGED &  
ABANDONED
- 15  
CPC PLUSS 25-01  
NE $\frac{1}{4}$ NE $\frac{1}{4}$   
594' FNL 543' FEL  
LAT: N 40.28881"  
LONG: W 104.60419"  
PDOP: 1.7  
ELEV: 4828'
- 16  
SHELTON G25-2  
NW $\frac{1}{4}$ NE $\frac{1}{4}$   
517' FNL 1962' FEL  
LAT: N 40.28904"  
LONG: W 104.60928"  
PDOP: 1.4  
ELEV: 4805'

DATE: 01/09/2014  
JOB NO.: NE13301