

LEGEND:

 PROPOSED LOCATION

BILL BARRETT CORPORATION

RUH 6-62-11_14 NENW PAD #6-62-11-0362CH2,
 0461CH2 & 0461BH2
 SECTION 11, T6N, R62W, 6th P.M.
 NE 1/4 NW 1/4



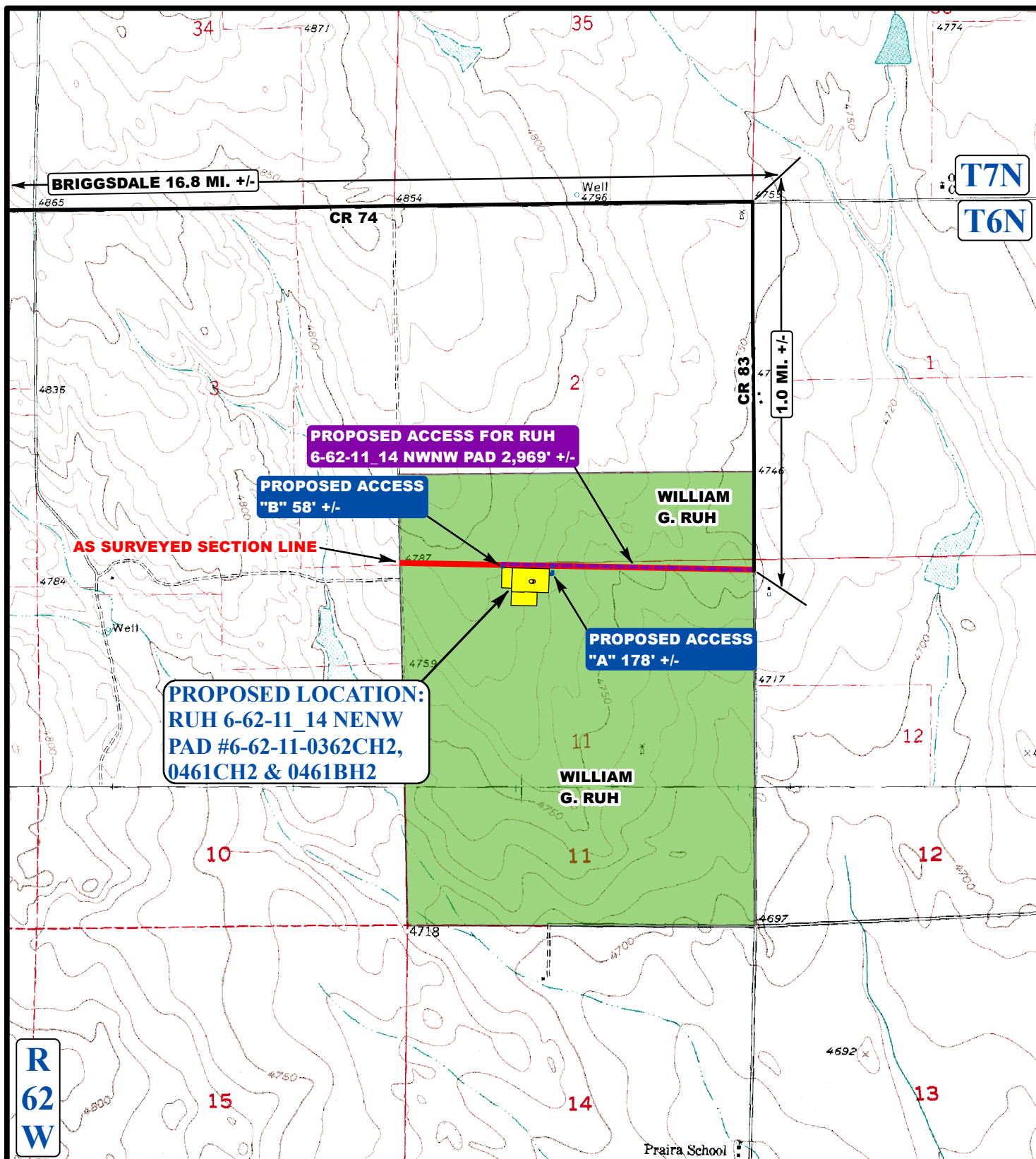
Utah Engineering & Land Surveying
 85 South 200 East Vernal, Utah 84078
 (435) 789-1017 * FAX (435) 789-1813

**ACCESS ROAD
MAP**

01 23 14
 MONTH DAY YEAR

SCALE: 1:100,000 DRAWN BY: J.L.G. REVISED: 03-24-14





LEGEND:

- EXISTING ROADS
- PROPOSED ACCESS ROAD

BILL BARRETT CORPORATION

RUH 6-62-11_14 NENW PAD #6-62-11-0362CH2,
0461CH2 & 0461BH2
SECTION 11, T6N, R62W, 6th P.M.
NE 1/4 NW 1/4



Uintah Engineering & Land Surveying
85 South 200 East Vernal, Utah 84078
(435) 789-1017 * FAX (435) 789-1813



ACCESS ROAD MAP

01 23 14
MONTH DAY YEAR

SCALE: 1"=2000' DRAWN BY: J.L.G. REVISED: 03-24-14



BILL BARRETT CORPORATION
RUH 6-62-11_14 NENW PAD #6-62-11-0362CH2,
0461CH2 & 0461BH2
SECTION 11, T6N, R62W, 6th P.M.

PROCEED IN A SOUTHERLY, THEN SOUTHWESTERLY DIRECTION FROM BRIGGSDALE, COLORADO ALONG HIGHWAY 392 APPROXIMATELY 9.7 MILES TO THE JUNCTION OF THIS ROAD AND COUNTY ROAD 74 TO THE EAST; TURN LEFT AND PROCEED IN AN EASTERLY DIRECTION APPROXIMATELY 7.1 MILES TO THE JUNCTION OF THIS ROAD AND COUNTY ROAD 83 TO THE SOUTH; TURN RIGHT AND PROCEED IN A SOUTHERLY DIRECTION APPROXIMATELY 1.0 MILES TO THE BEGINNING OF THE PROPOSED ACCESS ROAD FOR THE RUH #6-62-11_14 NWNW PAD TO THE WEST; FOLLOW ROAD FLAGS IN A WESTERLY DIRECTION APPROXIMATELY 2,969' TO THE BEGINNING OF THE PROPOSED ACCESS ROAD TO THE SOUTH; FOLLOW ROAD FLAGS IN A SOUTHERLY, THEN WESTERLY DIRECTION APPROXIMATELY 178' TO THE PROPOSED LOCATION.

TOTAL DISTANCE FROM BRIGGSDALE, COLORADO TO THE PROPOSED WELL LOCATION IS APPROXIMATELY 18.4 MILES.