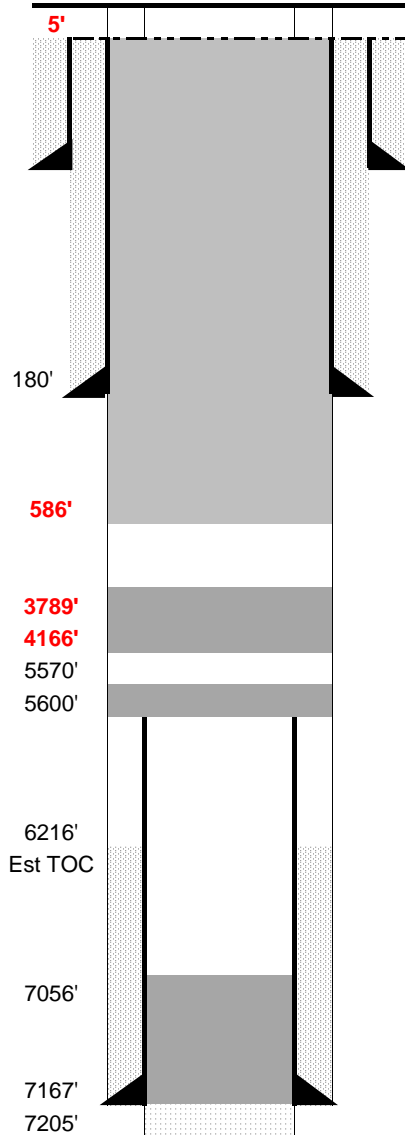


FINAL AS-BUILD

WELL NAME: Vessels State #1
OPERATOR: Vessels Tom - 93206
COMP ZONE: J Sand
LOCATION: 9N 61W S36 NE SW

COUNTY: Weld
STATE: Colorado
API : 05-123-07673

SPUD: 3/8/73
P&A: 9/18/73
GL: 4,966'



SURFACE CASING

DEPTH: 180' SIZE: 8 5/8" GRADE: J-55 WT (#/ft): 24.0
CEMENT: 135 sx cement + 2% CaCl
COMMENTS: _____

PRODUCTION CASING

DEPTH: 7,167' SIZE: 5 1/2" GRADE: J-55 WT (#/ft): 17 & 15.5
CEMENT: 150 sx 50/50 Pozmix Cement + 2% gel + 10% salt TOC: 6216' (Est)
COMMENTS: _____

OPEN HOLE: 7,167' - 7,205' PROD ZONE 1: J Sand
PERFS: _____ ZONE 2: _____
PERFS: _____ ZONE 3: _____

PREVIOUS PLUGS

RECOVERED: 5600' SIZE: 5 1/2"
CMT 1: 7,205' - 7,056' COMMENT: Sand + 10 sk cement plug
CMT 2: 5,600' - 5,570' COMMENT: 10 sx cement plug on top of stub
CMT 3: 428' - 134' COMMENT: 115 sk cement plug
CMT 4: 30' - 0' COMMENT: 10 sk cement plug at surface
OTHER: Plug #1: 125 sx cement from 4166' - 3789', tagged
Plug #2: 400 sx cement from 586' to surface

FORMATIONS:

NIOBRARA: 6,309'
CARLILE 6,636'
D SAND: 7069'
J SAND: 7,127'