

FINAL AS-BUILD

WELL NAME:

Bringelson 42-33

OPERATOR:

Lyc0 Energy Corp.

COMP ZONE:

LOCATION:

9N 58W 33Sec SE NE 6 PM

COUNTY:

Weld

STATE:

Colorado

API :

05-123-19585

SPUD:

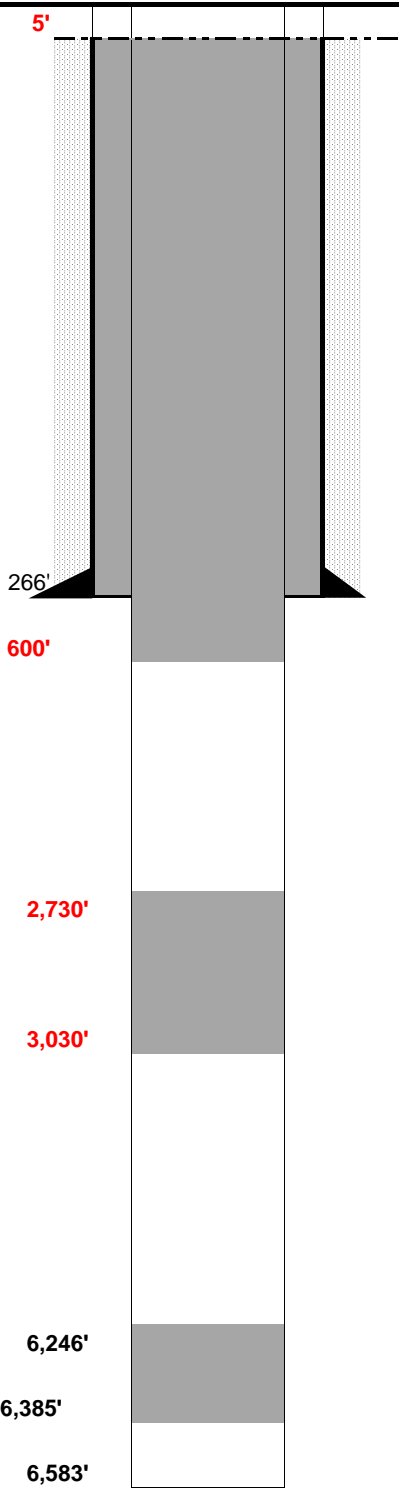
5/6/98

D&A:

5/10/98

GL:

4,814'



SURFACE CASING

DEPTH: 266' SIZE: 8.625" GRADE: WT (#/ft): 24.0

CEMENT:

COMMENTS:

PRODUCTION CASING

DEPTH: SIZE: GRADE: WT (#/ft):

CEMENT: TOC:

COMMENTS:

PERFS: - PROD ZONE 1:

PERFS: - ZONE 2:

PERFS: - ZONE 3:

PREVIOUS PLUGS

RECOVERED: SIZE:

CMT 1: 6,385' - 6,246' COMMENT: 40 SX

CMT 2: 300' - 250' COMMENT: 30 sx - half in half out surf csg

CMT 3: 4' - 37' COMMENT: 10 sx - surface

ACTUAL: Plug 1: 3,030' - 2,730' (100 sx cement)

Plug 2: 5' - 600' (320 sx cement) circulated to surface

FORMATIONS:

FW Zone:

NIOBRARA: 5,630'

FORT HAYS 5,870'

CODELL 5,914'

D SAND 6,444'

J SAND 6,456'