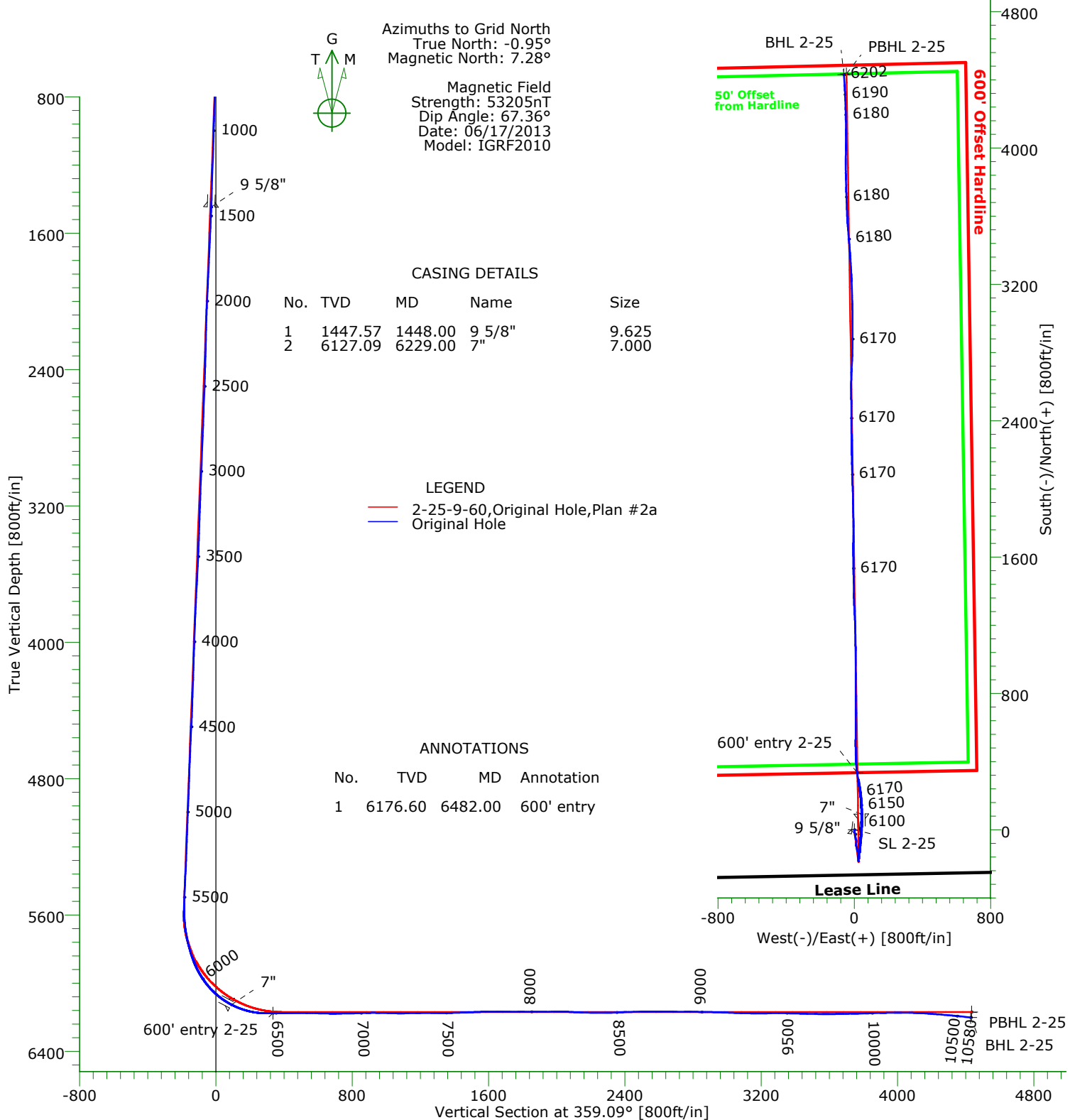




CARRIZO OIL & GAS, INC.
Field: Niobrara CONZ'83
Site: Shull 1-25-9-60 Pad
Well: 2-25-9-60
Wellpath: Original Hole



Azimuths to Grid North
True North: -0.95°
Magnetic North: 7.28°

Magnetic Field
Strength: 53205nT
Dip Angle: 67.36°
Date: 06/17/2013
Model: IGRF2010

CASING DETAILS

No.	TVD	MD	Name	Size
1	1447.57	1448.00	9 5/8"	9.625
2	6127.09	6229.00	7"	7.000

LEGEND

- 2-25-9-60, Original Hole, Plan #2a
- Original Hole

ANNOTATIONS

No.	TVD	MD	Annotation
1	6176.60	6482.00	600' entry

TARGET DETAILS

Name	TVD	+N/-S	+E/-W	Northing	Easting	Latitude	Longitude	Shape
SL 2-25	0.00	0.00	0.00	1506559.42	3406074.43	40°42'52.852N104°02'06.488W		Point
PBHL 2-25	6170.00	4434.77	-46.29	1510994.19	3406028.14	40°43'36.675N104°02'06.138W		Point
600' entry 2-25	6176.60	335.60	16.37	1506895.02	3406090.80	40°42'56.165N104°02'06.203W		Point
BHL 2-25	6201.73	4429.34	-60.82	1510988.76	3406013.61	40°43'36.624N104°02'06.328W		Point

Wellpath: (2-25-9-60/Original Hole)

Created By: Shane Nelson

Date: 06/27/2013

PRECISION DIRECTIONAL SERVICES, INC.

713.435.6250

Precision Directional Services, Inc.

Survey Report

Company: CARRIZO OIL & GAS, INC. Field: Niobrara CONZ'83 Site: Shull 1-25-9-60 Pad Well: 2-25-9-60 Wellpath: Original Hole	Date: 06/27/2013 Co-ordinate(NE) Reference: Well: 2-25-9-60, Grid North Vertical (TVD) Reference: 4943'GL+17"KB 4960.0 Section (VS) Reference: Well (0.00N,0.00E,359.09Azi) Survey Calculation Method: Minimum Curvature	Time: 11:47:42 Page: 1 Db: Adapti
---	---	--

Field: Niobrara CONZ'83 Map System: US State Plane Coordinate System 1983 Geo Datum: GRS 1980 Sys Datum: Mean Sea Level	Map Zone: Colorado, Northern Zone Coordinate System: Well Centre Geomagnetic Model: IGRF2010
--	---

Site: Shull 1-25-9-60 Pad			
Weld County, CO			
Site Position:	Northing: 1511404.05 ft	Latitude: 40 43 40.724 N	
From: Map	Easting: 3406027.06 ft	Longitude: 104 2 6.064 W	
Position Uncertainty: 0.00 ft		North Reference: Grid	
Ground Level: 4943.00 ft		Grid Convergence: 0.95 deg	

Well: 2-25-9-60 centered on 1-25 265FSL 1324FEL Well Position: +N/-S -4844.63 ft +E/-W 47.37 ft Position Uncertainty: 0.00 ft	Slot Name: 2-25 Latitude: 40 42 52.852 N Longitude: 104 2 6.488 W
--	--

Wellpath: Original Hole Current Datum: 4943'GL+17"KB Magnetic Data: 06/17/2013 Field Strength: 53205 nT Vertical Section: Depth From (TVD) ft	Height 4960.00 ft	Drilled From: Surface Tie-on Depth: 0.00 ft Above System Datum: Mean Sea Level Declination: 8.22 deg Mag Dip Angle: 67.36 deg +E/-W ft Direction deg
0.00	0.00	0.00 359.09

Survey Program for Definitive Wellpath				
Date: 06/27/2013	Validated: No	Version: 2		
Actual From ft	To ft	Survey	Toolcode	Tool Name
108.00	10522.00	Survey #1 (108.00-10522.00)	MWD	Std MWD
10580.00	10580.00	Survey #2 (10580.00-10580.00)	Project	Projection

Survey										
MD ft	Incl deg	Azim deg	TVD ft	+N/-S ft	+E/-W ft	VS ft	DLS deg/100ft	Build deg/100ft	Turn deg/100ft	Tool/Comment
0.00	0.00	0.00	0.00	0.00	0.00	0.00	0.00	0.00	0.00	TIE LINE
108.00	0.30	254.30	108.00	-0.08	-0.27	-0.07	0.28	0.28	0.00	MWD
139.00	0.20	263.60	139.00	-0.10	-0.40	-0.10	0.35	-0.32	30.00	MWD
231.00	0.20	28.20	231.00	0.02	-0.49	0.03	0.38	0.00	135.43	MWD
324.00	0.10	9.60	324.00	0.24	-0.40	0.25	0.12	-0.11	-20.00	MWD
418.00	0.10	101.10	418.00	0.31	-0.30	0.31	0.15	0.00	97.34	MWD
510.00	0.20	137.00	510.00	0.17	-0.12	0.18	0.14	0.11	39.02	MWD
602.00	1.40	171.30	601.99	-1.05	0.16	-1.06	1.35	1.30	37.28	MWD
694.00	1.60	183.90	693.96	-3.45	0.25	-3.45	0.42	0.22	13.70	MWD
786.00	1.60	182.90	785.92	-6.01	0.09	-6.01	0.03	0.00	-1.09	MWD
878.00	1.60	185.50	877.88	-8.57	-0.09	-8.57	0.08	0.00	2.83	MWD
970.00	1.80	164.30	969.85	-11.24	0.17	-11.24	0.71	0.22	-23.04	MWD
1062.00	1.90	158.10	1061.80	-14.05	1.13	-14.06	0.24	0.11	-6.74	MWD
1154.00	2.00	160.40	1153.74	-16.97	2.24	-17.01	0.14	0.11	2.50	MWD
1246.00	2.00	161.60	1245.69	-20.01	3.29	-20.06	0.05	0.00	1.30	MWD
1338.00	1.90	158.10	1337.63	-22.95	4.36	-23.02	0.17	-0.11	-3.80	MWD
1390.00	1.90	168.80	1389.61	-24.59	4.85	-24.67	0.68	0.00	20.58	MWD
1485.00	2.60	193.40	1484.53	-28.24	4.66	-28.31	1.24	0.74	25.89	MWD
1570.00	2.30	170.80	1569.46	-31.79	4.48	-31.86	1.18	-0.35	-26.59	MWD
1655.00	2.60	169.50	1654.38	-35.37	5.11	-35.45	0.36	0.35	-1.53	MWD
1740.00	2.80	167.60	1739.29	-39.30	5.91	-39.39	0.26	0.24	-2.24	MWD
1773.00	2.70	170.10	1772.25	-40.85	6.21	-40.94	0.47	-0.30	7.58	MWD

Precision Directional Services, Inc.

Survey Report

Company: CARRIZO OIL & GAS, INC.
Field: Niobrara CONZ'83
Site: Shull 1-25-9-60 Pad
Well: 2-25-9-60
Wellpath: Original Hole

Date: 06/27/2013 **Time:** 11:47:42 **Page:** 2
Co-ordinate(NE) Reference: Well: 2-25-9-60, Grid North
Vertical (TVD) Reference: 4943'GL+17"KB 4960.0
Section (VS) Reference: Well (0.00N,0.00E,359.09Azi)
Survey Calculation Method: Minimum Curvature **Db:** Adapti

Survey

MD ft	Incl deg	Azim deg	TVD ft	+N/-S ft	+E/-W ft	VS ft	DLS deg/100ft	Build deg/100ft	Turn deg/100ft	Tool/Comment
1857.00	2.50	171.60	1856.16	-44.61	6.82	-44.71	0.25	-0.24	1.79	MWD
1943.00	2.60	164.60	1942.08	-48.35	7.61	-48.46	0.38	0.12	-8.14	MWD
2027.00	2.80	166.00	2025.98	-52.18	8.61	-52.31	0.25	0.24	1.67	MWD
2112.00	1.80	163.20	2110.91	-55.47	9.50	-55.61	1.18	-1.18	-3.29	MWD
2197.00	1.30	161.60	2195.88	-57.66	10.19	-57.82	0.59	-0.59	-1.88	MWD
2282.00	1.50	160.40	2280.86	-59.62	10.87	-59.79	0.24	0.24	-1.41	MWD
2367.00	1.60	163.40	2365.83	-61.81	11.58	-61.99	0.15	0.12	3.53	MWD
2452.00	2.10	185.20	2450.78	-64.50	11.78	-64.68	1.01	0.59	25.65	MWD
2537.00	2.10	178.50	2535.73	-67.60	11.68	-67.78	0.29	0.00	-7.88	MWD
2622.00	2.10	181.70	2620.67	-70.72	11.67	-70.89	0.14	0.00	3.76	MWD
2706.00	2.00	187.10	2704.62	-73.71	11.45	-73.88	0.26	-0.12	6.43	MWD
2791.00	2.30	186.60	2789.56	-76.88	11.07	-77.04	0.35	0.35	-0.59	MWD
2876.00	2.30	182.90	2874.49	-80.28	10.79	-80.44	0.17	0.00	-4.35	MWD
2962.00	2.30	186.00	2960.42	-83.71	10.52	-83.87	0.14	0.00	3.60	MWD
3047.00	2.30	185.30	3045.35	-87.11	10.18	-87.26	0.03	0.00	-0.82	MWD
3132.00	2.10	191.00	3130.29	-90.34	9.73	-90.48	0.35	-0.24	6.71	MWD
3217.00	2.20	161.30	3215.23	-93.41	9.95	-93.56	1.30	0.12	-34.94	MWD
3301.00	2.00	154.20	3299.17	-96.26	11.11	-96.42	0.39	-0.24	-8.45	MWD
3385.00	2.30	147.20	3383.11	-98.99	12.66	-99.18	0.47	0.36	-8.33	MWD
3470.00	2.70	165.80	3468.03	-102.37	14.07	-102.58	1.06	0.47	21.88	MWD
3556.00	2.80	169.90	3553.94	-106.40	14.94	-106.62	0.26	0.12	4.77	MWD
3641.00	2.70	172.00	3638.84	-110.43	15.58	-110.66	0.17	-0.12	2.47	MWD
3726.00	3.00	168.80	3723.73	-114.59	16.29	-114.84	0.40	0.35	-3.76	MWD
3811.00	2.50	171.80	3808.63	-118.61	16.99	-118.86	0.61	-0.59	3.53	MWD
3897.00	2.20	170.40	3894.56	-122.09	17.53	-122.36	0.36	-0.35	-1.63	MWD
3982.00	2.20	170.40	3979.50	-125.31	18.08	-125.58	0.00	0.00	0.00	MWD
4067.00	2.10	165.70	4064.44	-128.43	18.73	-128.71	0.24	-0.12	-5.53	MWD
4152.00	1.90	137.90	4149.39	-130.98	20.06	-131.28	1.15	-0.24	-32.71	MWD
4237.00	2.20	151.90	4234.34	-133.47	21.78	-133.80	0.68	0.35	16.47	MWD
4323.00	2.20	159.50	4320.27	-136.47	23.13	-136.82	0.34	0.00	8.84	MWD
4408.00	2.00	169.40	4405.22	-139.45	23.98	-139.82	0.49	-0.24	11.65	MWD
4493.00	2.90	193.30	4490.14	-143.01	23.75	-143.36	1.58	1.06	28.12	MWD
4579.00	2.80	190.10	4576.03	-147.19	22.88	-147.54	0.22	-0.12	-3.72	MWD
4664.00	2.50	192.40	4660.94	-151.05	22.12	-151.38	0.37	-0.35	2.71	MWD
4750.00	2.10	182.00	4746.87	-154.45	21.66	-154.78	0.67	-0.47	-12.09	MWD
4835.00	1.80	173.40	4831.82	-157.33	21.76	-157.66	0.49	-0.35	-10.12	MWD
4920.00	2.40	178.50	4916.77	-160.44	21.96	-160.77	0.74	0.71	6.00	MWD
5005.00	2.30	175.00	5001.69	-163.92	22.16	-164.25	0.21	-0.12	-4.12	MWD
5090.00	2.00	162.00	5086.64	-167.03	22.77	-167.37	0.67	-0.35	-15.29	MWD
5175.00	2.30	173.90	5171.58	-170.13	23.41	-170.48	0.63	0.35	14.00	MWD
5260.00	1.90	180.40	5256.52	-173.24	23.58	-173.59	0.55	-0.47	7.65	MWD
5345.00	2.90	181.30	5341.44	-176.80	23.52	-177.15	1.18	1.18	1.06	MWD
5430.00	2.50	178.80	5426.35	-180.80	23.51	-181.15	0.49	-0.47	-2.94	MWD
5504.00	2.40	175.50	5500.28	-183.96	23.66	-184.31	0.23	-0.14	-4.46	MWD
5534.00	2.20	174.10	5530.26	-185.16	23.77	-185.51	0.69	-0.67	-4.67	MWD
5576.00	0.40	29.80	5572.25	-185.83	23.93	-186.19	6.04	-4.29	-343.57	MWD
5619.00	3.40	359.00	5615.22	-184.43	23.98	-184.79	7.12	6.98	-71.63	MWD
5662.00	6.10	3.80	5658.07	-180.87	24.11	-181.23	6.34	6.28	11.16	MWD
5704.00	8.90	4.60	5699.70	-175.41	24.52	-175.77	6.67	6.67	1.90	MWD
5747.00	11.70	5.90	5742.01	-167.75	25.23	-168.13	6.53	6.51	3.02	MWD
5789.00	14.40	5.70	5782.92	-158.32	26.19	-158.71	6.43	6.43	-0.48	MWD
5832.00	17.00	5.50	5824.31	-146.74	27.32	-147.15	6.05	6.05	-0.47	MWD
5875.00	20.00	4.60	5865.08	-133.15	28.52	-133.58	7.01	6.98	-2.09	MWD

Precision Directional Services, Inc.

Survey Report

Company: CARRIZO OIL & GAS, INC.	Date: 06/27/2013	Time: 11:47:42	Page: 3
Field: Niobrara CONZ'83	Co-ordinate(NE) Reference: Well: 2-25-9-60, Grid North		
Site: Shull 1-25-9-60 Pad	Vertical (TVD) Reference: 4943'GL+17"KB 4960.0		
Well: 2-25-9-60	Section (VS) Reference: Well (0.00N,0.00E,359.09Azi)		
Wellpath: Original Hole	Survey Calculation Method: Minimum Curvature		Db: Adapti

Survey

MD ft	Incl deg	Azim deg	TVD ft	+N/-S ft	+E/-W ft	VS ft	DLS deg/100ft	Build deg/100ft	Turn deg/100ft	Tool/Comment
5917.00	24.90	3.60	5903.89	-117.15	29.65	-117.61	11.70	11.67	-2.38	MWD
5960.00	29.70	5.20	5942.09	-97.50	31.18	-97.98	11.29	11.16	3.72	MWD
6002.00	34.60	5.70	5977.64	-75.26	33.31	-75.78	11.68	11.67	1.19	MWD
6045.00	39.70	6.00	6011.90	-49.44	35.96	-50.00	11.87	11.86	0.70	MWD
6088.00	44.30	4.30	6043.85	-20.79	38.52	-21.40	11.02	10.70	-3.95	MWD
6130.00	49.90	2.90	6072.43	9.91	40.44	9.26	13.55	13.33	-3.33	MWD
6173.00	55.50	0.80	6098.48	44.08	41.52	43.41	13.59	13.02	-4.88	MWD
6193.00	58.30	0.20	6109.40	60.83	41.66	60.16	14.22	14.00	-3.00	MWD
6271.00	68.10	358.00	6144.53	130.35	40.51	129.69	12.81	12.56	-2.82	MWD
6314.00	73.20	355.70	6158.77	170.84	38.27	170.21	12.89	11.86	-5.35	MWD
6356.00	78.80	352.90	6168.93	211.37	34.21	210.80	14.82	13.33	-6.67	MWD
6399.00	85.10	351.10	6174.95	253.51	28.29	253.03	15.23	14.65	-4.19	MWD
6441.00	90.10	351.80	6176.71	294.99	22.05	294.61	12.02	11.90	1.67	MWD
6482.00	90.20	352.28	6176.60	335.60	16.37	335.30	1.19	0.23	1.16	600' entry
6484.00	90.20	352.30	6176.59	337.58	16.10	337.28	1.19	0.23	1.16	MWD
6526.00	90.50	355.20	6176.34	379.33	11.53	379.09	6.94	0.71	6.90	MWD
6569.00	91.60	358.10	6175.55	422.24	9.02	422.04	7.21	2.56	6.74	MWD
6602.00	90.00	358.30	6175.09	455.22	7.98	455.03	4.89	-4.85	0.61	MWD
6645.00	89.00	359.70	6175.46	498.21	7.23	498.03	4.00	-2.33	3.26	MWD
6686.00	88.90	1.00	6176.22	539.20	7.48	539.01	3.18	-0.24	3.17	MWD
6729.00	89.00	0.80	6177.00	582.19	8.16	581.99	0.52	0.23	-0.47	MWD
6771.00	88.60	0.20	6177.88	624.18	8.53	623.96	1.72	-0.95	-1.43	MWD
6814.00	88.70	359.90	6178.90	667.16	8.56	666.94	0.74	0.23	-0.70	MWD
6856.00	90.80	359.40	6179.08	709.16	8.31	708.94	5.14	5.00	-1.19	MWD
6899.00	90.70	359.00	6178.52	752.15	7.71	751.94	0.96	-0.23	-0.93	MWD
6941.00	91.20	0.20	6177.82	794.15	7.41	793.93	3.09	1.19	2.86	MWD
6984.00	91.90	0.20	6176.66	837.13	7.56	836.90	1.63	1.63	0.00	MWD
7027.00	91.80	359.90	6175.27	880.11	7.60	879.88	0.74	-0.23	-0.70	MWD
7069.00	90.00	0.20	6174.61	922.10	7.64	921.86	4.34	-4.29	0.71	MWD
7112.00	88.80	0.20	6175.06	965.10	7.79	964.85	2.79	-2.79	0.00	MWD
7154.00	88.50	359.90	6176.05	1007.08	7.82	1006.83	1.01	-0.71	-0.71	MWD
7197.00	88.70	359.50	6177.10	1050.07	7.60	1049.82	1.04	0.47	-0.93	MWD
7239.00	90.30	359.20	6177.47	1092.07	7.12	1091.81	3.88	3.81	-0.71	MWD
7281.00	90.90	358.70	6177.03	1134.06	6.35	1133.81	1.86	1.43	-1.19	MWD
7323.00	90.90	358.30	6176.37	1176.04	5.25	1175.80	0.95	0.00	-0.95	MWD
7365.00	90.50	357.80	6175.85	1218.01	3.82	1217.79	1.52	-0.95	-1.19	MWD
7408.00	90.70	357.30	6175.40	1260.97	1.99	1260.78	1.25	0.47	-1.16	MWD
7450.00	89.30	356.90	6175.40	1302.91	-0.14	1302.75	3.47	-3.33	-0.95	MWD
7493.00	90.30	358.70	6175.55	1345.88	-1.79	1345.74	4.79	2.33	4.19	MWD
7536.00	91.90	359.40	6174.73	1388.86	-2.50	1388.73	4.06	3.72	1.63	MWD
7578.00	91.70	359.00	6173.41	1430.84	-3.09	1430.71	1.06	-0.48	-0.95	MWD
7621.00	91.80	358.30	6172.10	1473.80	-4.10	1473.68	1.64	0.23	-1.63	MWD
7663.00	92.40	359.20	6170.56	1515.77	-5.02	1515.65	2.57	1.43	2.14	MWD
7706.00	91.10	359.70	6169.24	1558.74	-5.43	1558.63	3.24	-3.02	1.16	MWD
7749.00	89.60	358.80	6168.98	1601.74	-5.99	1601.63	4.07	-3.49	-2.09	MWD
7791.00	90.00	359.90	6169.13	1643.73	-6.47	1643.63	2.79	0.95	2.62	MWD
7833.00	90.40	1.50	6168.98	1685.73	-5.96	1685.61	3.93	0.95	3.81	MWD
7876.00	89.90	0.20	6168.87	1728.72	-5.32	1728.59	3.24	-1.16	-3.02	MWD
7919.00	90.30	0.10	6168.79	1771.72	-5.20	1771.58	0.96	0.93	-0.23	MWD
7961.00	89.70	358.80	6168.79	1813.72	-5.61	1813.58	3.41	-1.43	-3.10	MWD
8004.00	90.00	358.70	6168.91	1856.71	-6.55	1856.58	0.74	0.70	-0.23	MWD
8047.00	90.70	359.40	6168.64	1899.70	-7.26	1899.58	2.30	1.63	1.63	MWD
8089.00	90.50	358.70	6168.20	1941.69	-7.96	1941.57	1.73	-0.48	-1.67	MWD
8132.00	90.40	358.50	6167.87	1984.68	-9.01	1984.57	0.52	-0.23	-0.47	MWD

Precision Directional Services, Inc.

Survey Report

Company: CARRIZO OIL & GAS, INC.
Field: Niobrara CONZ'83
Site: Shull 1-25-9-60 Pad
Well: 2-25-9-60
Wellpath: Original Hole

Date: 06/27/2013 **Time:** 11:47:42 **Page:** 4
Co-ordinate(NE) Reference: Well: 2-25-9-60, Grid North
Vertical (TVD) Reference: 4943'GL+17"KB 4960.0
Section (VS) Reference: Well (0.00N,0.00E,359.09Azi)
Survey Calculation Method: Minimum Curvature **Db:** Adapti

Survey

MD ft	Incl deg	Azim deg	TVD ft	+N/-S ft	+E/-W ft	VS ft	DLS deg/100ft	Build deg/100ft	Turn deg/100ft	Tool/Comment
8174.00	89.30	358.00	6167.98	2026.66	-10.29	2026.57	2.88	-2.62	-1.19	MWD
8217.00	87.10	358.10	6169.33	2069.61	-11.75	2069.54	5.12	-5.12	0.23	MWD
8260.00	87.90	358.10	6171.20	2112.54	-13.18	2112.49	1.86	1.86	0.00	MWD
8302.00	88.30	358.70	6172.59	2154.50	-14.35	2154.46	1.72	0.95	1.43	MWD
8345.00	88.50	358.70	6173.79	2197.48	-15.32	2197.44	0.47	0.47	0.00	MWD
8387.00	89.60	359.40	6174.49	2239.46	-16.02	2239.44	3.10	2.62	1.67	MWD
8430.00	90.60	359.70	6174.42	2282.46	-16.36	2282.43	2.43	2.33	0.70	MWD
8472.00	92.20	359.40	6173.39	2324.45	-16.69	2324.42	3.88	3.81	-0.71	MWD
8515.00	92.40	359.20	6171.66	2367.41	-17.21	2367.38	0.66	0.47	-0.47	MWD
8557.00	91.70	0.10	6170.16	2409.38	-17.47	2409.35	2.71	-1.67	2.14	MWD
8600.00	91.50	359.90	6168.96	2452.36	-17.47	2452.33	0.66	-0.47	-0.47	MWD
8642.00	91.50	359.50	6167.86	2494.35	-17.69	2494.32	0.95	0.00	-0.95	MWD
8685.00	90.00	359.00	6167.30	2537.34	-18.25	2537.31	3.68	-3.49	-1.16	MWD
8728.00	89.90	359.90	6167.34	2580.34	-18.66	2580.31	2.11	-0.23	2.09	MWD
8770.00	89.70	1.10	6167.48	2622.34	-18.30	2622.30	2.90	-0.48	2.86	MWD
8813.00	89.40	1.50	6167.82	2665.32	-17.32	2665.26	1.16	-0.70	0.93	MWD
8855.00	89.80	2.70	6168.11	2707.29	-15.78	2707.20	3.01	0.95	2.86	MWD
8898.00	89.80	2.90	6168.26	2750.24	-13.68	2750.11	0.47	0.00	0.47	MWD
8940.00	89.00	1.70	6168.70	2792.20	-12.00	2792.04	3.43	-1.90	-2.86	MWD
8983.00	89.30	1.10	6169.34	2835.19	-10.95	2835.00	1.56	0.70	-1.40	MWD
9026.00	89.00	0.40	6169.98	2878.18	-10.38	2877.98	1.77	-0.70	-1.63	MWD
9068.00	88.80	0.10	6170.79	2920.17	-10.20	2919.96	0.86	-0.48	-0.71	MWD
9111.00	88.40	359.70	6171.84	2963.16	-10.27	2962.95	1.32	-0.93	-0.93	MWD
9153.00	87.60	359.40	6173.30	3005.13	-10.60	3004.92	2.03	-1.90	-0.71	MWD
9196.00	87.70	358.70	6175.07	3048.09	-11.32	3047.88	1.64	0.23	-1.63	MWD
9239.00	88.90	358.50	6176.34	3091.05	-12.37	3090.86	2.83	2.79	-0.47	MWD
9281.00	88.60	358.30	6177.26	3133.03	-13.54	3132.85	0.86	-0.71	-0.48	MWD
9323.00	90.00	358.30	6177.77	3175.00	-14.78	3174.84	3.33	3.33	0.00	MWD
9365.00	90.70	358.30	6177.51	3216.99	-16.03	3216.83	1.67	1.67	0.00	MWD
9408.00	90.00	357.10	6177.25	3259.95	-17.76	3259.82	3.23	-1.63	-2.79	MWD
9451.00	90.00	356.60	6177.25	3302.88	-20.12	3302.79	1.16	0.00	-1.16	MWD
9493.00	90.00	356.20	6177.25	3344.80	-22.76	3344.74	0.95	0.00	-0.95	MWD
9536.00	89.10	355.20	6177.59	3387.68	-25.98	3387.66	3.13	-2.09	-2.33	MWD
9578.00	87.60	355.30	6178.80	3429.51	-29.46	3429.55	3.58	-3.57	0.24	MWD
9621.00	88.80	355.50	6180.15	3472.35	-32.90	3472.44	2.83	2.79	0.47	MWD
9664.00	88.80	355.30	6181.05	3515.21	-36.35	3515.34	0.47	0.00	-0.47	MWD
9706.00	89.50	355.70	6181.67	3557.07	-39.65	3557.25	1.92	1.67	0.95	MWD
9749.00	90.30	357.80	6181.75	3600.00	-42.08	3600.21	5.23	1.86	4.88	MWD
9791.00	91.20	358.50	6181.20	3641.97	-43.44	3642.20	2.71	2.14	1.67	MWD
9834.00	90.80	357.60	6180.45	3684.94	-44.90	3685.19	2.29	-0.93	-2.09	MWD
9877.00	91.10	357.30	6179.73	3727.89	-46.82	3728.17	0.99	0.70	-0.70	MWD
9919.00	91.30	358.50	6178.85	3769.85	-48.35	3770.15	2.90	0.48	2.86	MWD
9962.00	91.40	358.50	6177.84	3812.83	-49.48	3813.13	0.23	0.23	0.00	MWD
10005.00	91.60	0.10	6176.72	3855.81	-50.00	3856.12	3.75	0.47	3.72	MWD
10047.00	91.60	359.50	6175.54	3897.79	-50.15	3898.10	1.43	0.00	-1.43	MWD
10089.00	91.00	0.60	6174.59	3939.78	-50.11	3940.08	2.98	-1.43	2.62	MWD
10131.00	91.00	0.20	6173.86	3981.77	-49.82	3982.06	0.95	0.00	-0.95	MWD
10174.00	89.30	0.60	6173.75	4024.77	-49.52	4025.05	4.06	-3.95	0.93	MWD
10217.00	89.30	0.10	6174.27	4067.77	-49.26	4068.04	1.16	0.00	-1.16	MWD
10259.00	88.50	359.40	6175.08	4109.76	-49.44	4110.02	2.53	-1.90	-1.67	MWD
10302.00	86.30	359.40	6177.03	4152.71	-49.89	4152.98	5.12	-5.12	0.00	MWD
10344.00	85.50	358.70	6180.03	4194.59	-50.59	4194.87	2.53	-1.90	-1.67	MWD
10387.00	85.20	358.10	6183.52	4237.44	-51.78	4237.72	1.56	-0.70	-1.40	MWD

Precision Directional Services, Inc.

Survey Report

Company: CARRIZO OIL & GAS, INC. Field: Niobrara CONZ'83 Site: Shull 1-25-9-60 Pad Well: 2-25-9-60 Wellpath: Original Hole	Date: 06/27/2013 Time: 11:47:42 Page: 5 Co-ordinate(NE) Reference: Well: 2-25-9-60, Grid North Vertical (TVD) Reference: 4943'GL+17'KB 4960.0 Section (VS) Reference: Well (0.00N,0.00E,359.09Azi) Survey Calculation Method: Minimum Curvature Db: Adapti
---	--

Survey

MD ft	Incl deg	Azim deg	TVD ft	+N/-S ft	+E/-W ft	VS ft	DLS deg/100ft	Build deg/100ft	Turn deg/100ft	Tool/Comment
10428.00	85.10	358.00	6186.98	4278.26	-53.17	4278.57	0.34	-0.24	-0.24	MWD
10470.00	84.90	357.60	6190.64	4320.07	-54.78	4320.40	1.06	-0.48	-0.95	MWD
10522.00	84.00	356.60	6195.67	4371.76	-57.40	4372.12	2.58	-1.73	-1.92	MWD
10580.00	84.00	356.60	6201.73	4429.34	-60.82	4429.75	0.00	0.00	0.00	Project

Annotation

MD ft	TVD ft	
6482.00	6176.60	600' entry