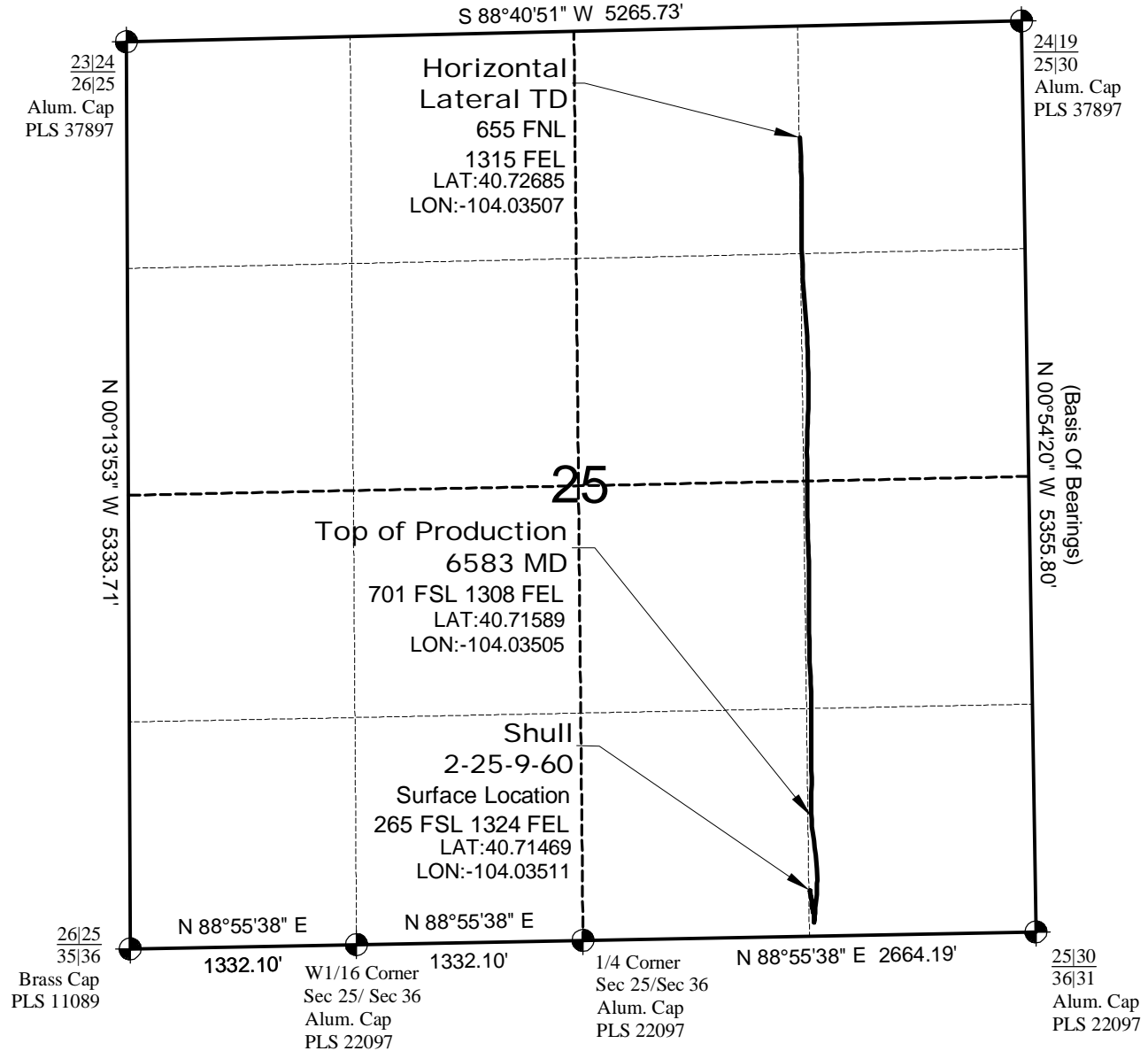


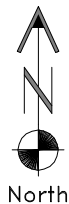
# AS-DRILLED MAP

SHULL  
1-25-9-60 PAD

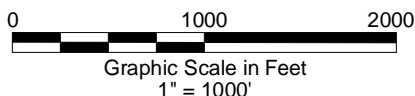


## SURVEYOR'S STATEMENT

The undersigned hereby states that the as-drilled lateral as shown hereon was plotted from the directional survey report prepared by Precision Directional Services (See Note 2).



North



## NOTES

- 1.) Refer to well location map on record at COGCC.
- 2.) Directional data provided by Precision Directional Services. Report Date: 5/01/13 Created by: Shane Nelson
- 3.) Distances to nearest section lines are measured perpendicularly.
- 4.) Date of Conductor As-built 4/13/13; Date of Drawing 10/31/13. REV 1 PDOP Reading: 1.9 Instrument Operator: George Allen



**CARRIZO NIOBRARA LLC**  
SHULL 2-25-9-60

SL SE1/4 SE1/4 SEC. 25 T9N R6W  
HL TD NE1/4 NE1/4 SEC. 25 T9N R6W  
6th PM WELD COUNTY COLORADO