

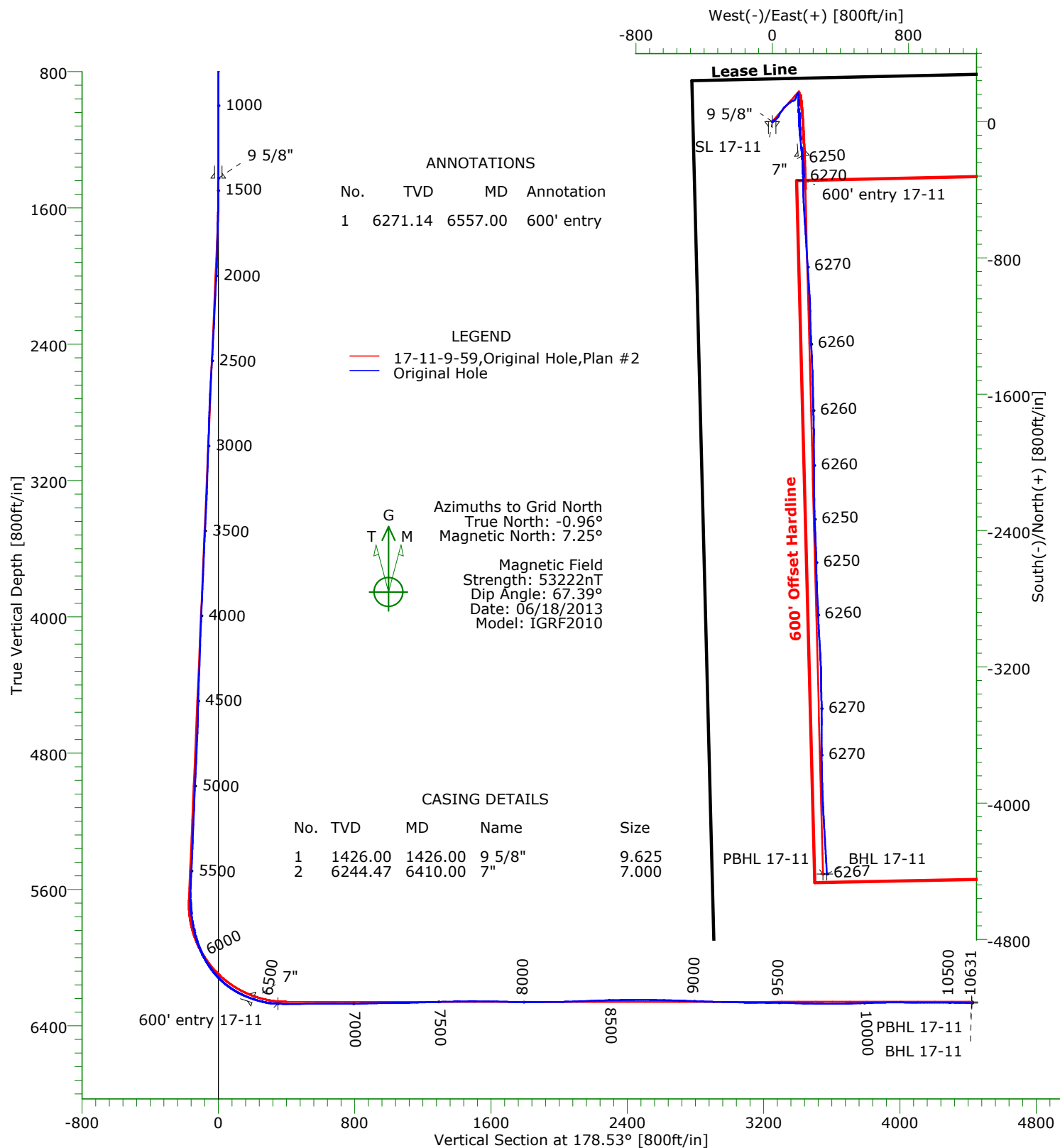


CARRIZO

CARRIZO OIL & GAS, INC.
Field: Niobrara CONZ'83
Site: Timbro Ranch 17-11-9-59
Well: 17-11-9-59
Wellpath: Original Hole



Precision
Directional Services



Precision Directional Services, Inc.

Survey Report

Company: CARRIZO OIL & GAS, INC.		Date: 06/25/2013	Time: 12:06:23	Page: 1
Field: Niobrara CONZ'83		Co-ordinate(NE) Reference: Well: 17-11-9-59, Grid North		
Site: Timbro Ranch 17-11-9-59		Vertical (TVD) Reference: 5021'GL+17'KB 5038.0		
Well: 17-11-9-59		Section (VS) Reference: Well (0.00N,0.00E,178.53Azi)		
Wellpath: Original Hole		Survey Calculation Method: Minimum Curvature	Db: Adapti	

Field: Niobrara CONZ'83				
Map System: US State Plane Coordinate System 1983		Map Zone: Colorado, Northern Zone		
Geo Datum: GRS 1980		Coordinate System: Well Centre		
Sys Datum: Mean Sea Level		Geomagnetic Model: IGRF2010		

Site: Timbro Ranch 17-11-9-59 251'FNL,466FWL Weld County, CO				
Site Position:	Northing: 1522104.82 ft	Latitude: 40 45 25.333 N		
From: Map	Easting: 3412783.97 ft	Longitude: 104 0 35.977 W		
Position Uncertainty: 0.00 ft		North Reference: Grid		
Ground Level: 5021.00 ft		Grid Convergence: 0.96 deg		

Well: 17-11-9-59				
Slot Name:				
Well Position: +N/-S 0.00 ft	Northing: 1522104.82 ft	Latitude: 40 45 25.333 N		
+E/-W 0.00 ft	Easting : 3412783.97 ft	Longitude: 104 0 35.977 W		
Position Uncertainty: 0.00 ft				

Wellpath: Original Hole				
Current Datum: 5021'GL+17'KB	Height 5038.00 ft	Drilled From: Surface		
Magnetic Data: 06/18/2013		Tie-on Depth: 0.00 ft		
Field Strength: 53222 nT		Above System Datum: Mean Sea Level		
Vertical Section: Depth From (TVD)		Declination: 8.21 deg		
ft	+N/-S ft	Mag Dip Angle: 67.39 deg		
		+E/-W ft	Direction deg	
0.00	0.00	0.00	178.53	

Survey Program for Definitive Wellpath				
Date: 06/25/2013	Validated: No	Version: 0		
Actual From ft	To ft	Survey	Toolcode	Tool Name
1441.00	10570.00	Survey #1 (1441.00-10570.00)	MWD	Std MWD
10631.00	10631.00	Survey #2 (10631.00-10631.00)	Project	Projection

Survey										
MD ft	Incl deg	Azim deg	TVD ft	+N/-S ft	+E/-W ft	VS ft	DLS deg/100ft	Build deg/100ft	Turn deg/100ft	Tool/Comment
0.00	0.00	0.00	0.00	0.00	0.00	0.00	0.00	0.00	0.00	TIE LINE
1441.00	0.00	0.00	1441.00	0.00	0.00	0.00	0.00	0.00	0.00	MWD
1448.00	0.10	65.80	1448.00	0.00	0.01	0.00	1.43	1.43	0.00	MWD
1541.00	0.20	325.20	1541.00	0.17	-0.01	-0.17	0.26	0.11	-108.17	MWD
1635.00	3.00	56.60	1634.96	1.66	1.95	-1.61	3.20	2.98	97.23	MWD
1729.00	3.30	71.80	1728.82	3.86	6.57	-3.69	0.94	0.32	16.17	MWD
1814.00	3.30	53.80	1813.68	6.07	10.87	-5.79	1.21	0.00	-21.18	MWD
1899.00	3.30	72.30	1898.54	8.26	15.17	-7.86	1.25	0.00	21.76	MWD
1985.00	4.00	45.40	1984.37	11.11	19.67	-10.61	2.13	0.81	-31.28	MWD
2070.00	4.10	45.00	2069.16	15.34	23.93	-14.73	0.12	0.12	-0.47	MWD
2155.00	4.00	43.10	2153.95	19.66	28.10	-18.93	0.20	-0.12	-2.24	MWD
2241.00	4.00	47.30	2239.74	23.88	32.36	-23.04	0.34	0.00	4.88	MWD
2326.00	3.60	26.20	2324.55	28.29	35.71	-27.36	1.70	-0.47	-24.82	MWD
2411.00	3.30	27.60	2409.40	32.85	38.03	-31.86	0.37	-0.35	1.65	MWD
2496.00	3.70	23.40	2494.24	37.53	40.25	-36.49	0.56	0.47	-4.94	MWD
2582.00	3.80	24.50	2580.06	42.67	42.53	-41.57	0.14	0.12	1.28	MWD
2667.00	3.70	24.30	2664.87	47.74	44.83	-46.57	0.12	-0.12	-0.24	MWD
2753.00	2.50	33.40	2750.75	51.83	47.00	-50.61	1.50	-1.40	10.58	MWD
2838.00	2.40	44.30	2835.67	54.65	49.27	-53.37	0.56	-0.12	12.82	MWD
2923.00	2.30	34.30	2920.60	57.34	51.47	-56.00	0.50	-0.12	-11.76	MWD
3008.00	2.60	41.00	3005.52	60.20	53.70	-58.80	0.49	0.35	7.88	MWD
3094.00	2.30	35.90	3091.44	63.07	55.99	-61.61	0.43	-0.35	-5.93	MWD

Precision Directional Services, Inc.

Survey Report

Company: CARRIZO OIL & GAS, INC. Field: Niobrara CONZ'83 Site: Timbro Ranch 17-11-9-59 Well: 17-11-9-59 Wellpath: Original Hole	Date: 06/25/2013 Time: 12:06:23 Page: 2 Co-ordinate(NE) Reference: Well: 17-11-9-59, Grid North Vertical (TVD) Reference: 5021'GL+17"KB 5038.0 Section (VS) Reference: Well (0.00N,0.00E,178.53Azi) Survey Calculation Method: Minimum Curvature Db: Adapti
--	---

Survey

MD ft	Incl deg	Azim deg	TVD ft	+N/-S ft	+E/-W ft	VS ft	DLS deg/100ft	Build deg/100ft	Turn deg/100ft	Tool/Comment
3179.00	2.50	36.60	3176.37	65.94	58.09	-64.43	0.24	0.24	0.82	MWD
3264.00	2.20	35.00	3261.30	68.77	60.13	-67.20	0.36	-0.35	-1.88	MWD
3349.00	3.80	37.10	3346.18	72.35	62.77	-70.71	1.89	1.88	2.47	MWD
3435.00	3.30	34.00	3432.01	76.67	65.87	-74.96	0.62	-0.58	-3.60	MWD
3520.00	3.20	27.50	3516.88	80.81	68.34	-79.03	0.45	-0.12	-7.65	MWD
3605.00	3.70	45.60	3601.72	84.83	71.39	-82.97	1.40	0.59	21.29	MWD
3691.00	3.80	51.00	3687.54	88.56	75.59	-86.60	0.43	0.12	6.28	MWD
3776.00	4.00	46.80	3772.34	92.37	79.94	-90.29	0.41	0.24	-4.94	MWD
3861.00	3.80	51.20	3857.15	96.16	84.30	-93.97	0.42	-0.24	5.18	MWD
3947.00	3.90	50.00	3942.95	99.83	88.76	-97.52	0.15	0.12	-1.40	MWD
4032.00	3.80	51.50	4027.76	103.44	93.18	-101.01	0.17	-0.12	1.76	MWD
4117.00	3.90	53.80	4112.57	106.90	97.71	-104.36	0.22	0.12	2.71	MWD
4202.00	3.70	54.70	4197.38	110.19	102.28	-107.53	0.25	-0.24	1.06	MWD
4288.00	3.70	53.70	4283.20	113.44	106.78	-110.66	0.08	0.00	-1.16	MWD
4373.00	3.90	51.70	4368.02	116.85	111.26	-113.96	0.28	0.24	-2.35	MWD
4458.00	4.10	61.40	4452.81	120.10	116.20	-117.08	0.83	0.24	11.41	MWD
4544.00	4.40	82.70	4538.58	121.99	122.17	-118.81	1.86	0.35	24.77	MWD
4629.00	3.50	58.90	4623.38	123.74	127.63	-120.43	2.18	-1.06	-28.00	MWD
4714.00	3.60	42.60	4708.22	127.05	131.66	-123.63	1.19	0.12	-19.18	MWD
4800.00	3.50	43.80	4794.06	130.93	135.30	-127.42	0.14	-0.12	1.40	MWD
4885.00	2.90	18.90	4878.93	134.84	137.79	-131.26	1.76	-0.71	-29.29	MWD
4970.00	2.60	21.70	4963.83	138.66	139.20	-135.05	0.39	-0.35	3.29	MWD
5056.00	2.80	19.40	5049.73	142.46	140.62	-138.80	0.26	0.23	-2.67	MWD
5141.00	2.60	19.00	5134.64	146.24	141.94	-142.55	0.24	-0.24	-0.47	MWD
5226.00	2.40	19.20	5219.56	149.74	143.15	-146.02	0.24	-0.24	0.24	MWD
5311.00	2.40	10.40	5304.48	153.17	144.06	-149.43	0.43	0.00	-10.35	MWD
5396.00	3.00	33.60	5389.39	156.78	145.61	-152.99	1.45	0.71	27.29	MWD
5482.00	3.10	29.60	5475.27	160.67	148.00	-156.82	0.27	0.12	-4.65	MWD
5579.00	2.80	25.90	5572.14	165.08	150.33	-161.17	0.37	-0.31	-3.81	MWD
5624.00	2.70	27.30	5617.09	167.01	151.30	-163.08	0.27	-0.22	3.11	MWD
5667.00	1.00	66.30	5660.07	168.07	152.11	-164.11	4.70	-3.95	90.70	MWD
5709.00	4.50	164.00	5702.02	166.63	152.90	-162.65	11.28	8.33	232.62	MWD
5752.00	8.70	170.90	5744.73	161.79	153.88	-157.79	9.92	9.77	16.05	MWD
5795.00	9.60	175.60	5787.18	155.01	154.67	-150.99	2.72	2.09	10.93	MWD
5837.00	10.60	188.80	5828.54	147.70	154.35	-143.69	5.99	2.38	31.43	MWD
5880.00	14.30	183.60	5870.52	138.48	153.41	-134.50	8.98	8.60	-12.09	MWD
5923.00	18.50	181.10	5911.76	126.36	152.94	-122.39	9.90	9.77	-5.81	MWD
5965.00	22.50	178.50	5951.09	111.66	153.02	-107.69	9.77	9.52	-6.19	MWD
6008.00	26.60	177.60	5990.20	93.81	153.64	-89.83	9.57	9.53	-2.09	MWD
6050.00	30.70	177.60	6027.05	73.69	154.49	-69.70	9.76	9.76	0.00	MWD
6093.00	35.20	177.80	6063.12	50.33	155.42	-46.32	10.47	10.47	0.47	MWD
6136.00	40.40	177.90	6097.09	24.00	156.41	-19.98	12.09	12.09	0.23	MWD
6178.00	45.80	176.70	6127.74	-4.65	157.78	8.70	13.00	12.86	-2.86	MWD
6221.00	50.80	176.40	6156.34	-36.69	159.71	40.78	11.64	11.63	-0.70	MWD
6264.00	56.10	175.10	6181.94	-71.12	162.28	75.26	12.56	12.33	-3.02	MWD
6306.00	61.00	173.90	6203.85	-106.78	165.73	110.99	11.92	11.67	-2.86	MWD
6349.00	66.70	173.90	6222.79	-145.14	169.83	149.45	13.26	13.26	0.00	MWD
6451.00	75.00	176.50	6256.23	-241.07	177.83	245.55	8.49	8.14	2.55	MWD
6493.00	80.30	177.80	6265.21	-282.03	179.86	286.55	12.98	12.62	3.10	MWD
6536.00	86.70	179.50	6270.07	-324.72	180.86	329.25	15.39	14.88	3.95	MWD
6557.00	87.48	179.35	6271.14	-345.69	181.07	350.22	3.79	3.72	-0.70	600' entry
6579.00	88.30	179.20	6271.95	-367.67	181.35	372.21	3.79	3.72	-0.70	MWD
6621.00	90.00	178.60	6272.57	-409.66	182.16	414.20	4.29	4.05	-1.43	MWD

Precision Directional Services, Inc.

Survey Report

Company: CARRIZO OIL & GAS, INC. Field: Niobrara CONZ'83 Site: Timbro Ranch 17-11-9-59 Well: 17-11-9-59 Wellpath: Original Hole	Date: 06/25/2013 Co-ordinate(NE) Reference: Well: 17-11-9-59, Grid North Vertical (TVD) Reference: 5021'GL+17'KB 5038.0 Section (VS) Reference: Well (0.00N,0.00E,178.53Azi) Survey Calculation Method: Minimum Curvature	Time: 12:06:23 Page: 3 Db: Adapti
--	--	--

Survey

MD ft	Incl deg	Azim deg	TVD ft	+N/-S ft	+E/-W ft	VS ft	DLS deg/100ft	Build deg/100ft	Turn deg/100ft	Tool/Comment
6689.00	90.60	177.20	6272.21	-477.61	184.65	482.19	2.24	0.88	-2.06	MWD
6731.00	90.60	176.50	6271.77	-519.55	186.96	524.17	1.67	0.00	-1.67	MWD
6774.00	90.60	176.50	6271.32	-562.46	189.58	567.14	0.00	0.00	0.00	MWD
6817.00	90.00	176.00	6271.10	-605.37	192.39	610.11	1.82	-1.40	-1.16	MWD
6859.00	89.30	175.80	6271.36	-647.26	195.40	652.06	1.73	-1.67	-0.48	MWD
6901.00	90.00	177.10	6271.61	-689.18	198.00	694.03	3.52	1.67	3.10	MWD
6945.00	89.60	176.70	6271.77	-733.11	200.38	738.01	1.29	-0.91	-0.91	MWD
6987.00	90.80	176.70	6271.62	-775.04	202.79	779.99	2.86	2.86	0.00	MWD
7030.00	91.00	176.70	6270.94	-817.97	205.27	822.96	0.47	0.47	0.00	MWD
7073.00	91.90	176.20	6269.86	-860.87	207.93	865.92	2.39	2.09	-1.16	MWD
7115.00	91.50	176.00	6268.61	-902.75	210.78	907.86	1.06	-0.95	-0.48	MWD
7158.00	91.20	176.20	6267.60	-945.64	213.71	950.81	0.84	-0.70	0.47	MWD
7201.00	90.70	176.50	6266.88	-988.55	216.45	993.78	1.36	-1.16	0.70	MWD
7243.00	90.00	176.00	6266.63	-1030.46	219.19	1035.74	2.05	-1.67	-1.19	MWD
7286.00	90.40	178.50	6266.48	-1073.40	221.26	1078.73	5.89	0.93	5.81	MWD
7329.00	91.80	179.00	6265.65	-1116.39	222.19	1121.72	3.46	3.26	1.16	MWD
7371.00	91.70	178.80	6264.37	-1158.36	223.00	1163.70	0.53	-0.24	-0.48	MWD
7414.00	91.80	178.30	6263.06	-1201.32	224.09	1206.68	1.19	0.23	-1.16	MWD
7457.00	92.20	177.90	6261.55	-1244.27	225.51	1249.65	1.32	0.93	-0.93	MWD
7499.00	91.00	177.40	6260.38	-1286.22	227.23	1291.63	3.10	-2.86	-1.19	MWD
7542.00	91.10	176.90	6259.59	-1329.16	229.37	1334.61	1.19	0.23	-1.16	MWD
7585.00	91.10	176.70	6258.77	-1372.09	231.77	1377.58	0.47	0.00	-0.47	MWD
7627.00	90.70	177.90	6258.11	-1414.03	233.75	1419.56	3.01	-0.95	2.86	MWD
7670.00	91.00	177.90	6257.47	-1457.00	235.32	1462.56	0.70	0.70	0.00	MWD
7713.00	89.70	178.30	6257.21	-1499.97	236.75	1505.55	3.16	-3.02	0.93	MWD
7755.00	89.70	179.00	6257.43	-1541.96	237.74	1547.55	1.67	0.00	1.67	MWD
7798.00	89.30	178.80	6257.80	-1584.95	238.56	1590.55	1.04	-0.93	-0.47	MWD
7840.00	89.00	178.60	6258.43	-1626.94	239.52	1632.55	0.86	-0.71	-0.48	MWD
7883.00	88.60	178.80	6259.33	-1669.92	240.49	1675.54	1.04	-0.93	0.47	MWD
7926.00	88.40	178.10	6260.45	-1712.89	241.66	1718.52	1.69	-0.47	-1.63	MWD
7968.00	89.00	179.20	6261.41	-1754.86	242.64	1760.51	2.98	1.43	2.62	MWD
8011.00	88.90	179.20	6262.19	-1797.85	243.25	1803.50	0.23	-0.23	0.00	MWD
8054.00	90.80	179.50	6262.31	-1840.85	243.73	1846.49	4.47	4.42	0.70	MWD
8096.00	90.70	179.70	6261.76	-1882.84	244.03	1888.48	0.53	-0.24	0.48	MWD
8139.00	90.90	179.70	6261.16	-1925.84	244.25	1931.47	0.47	0.47	0.00	MWD
8182.00	90.70	179.20	6260.56	-1968.83	244.66	1974.46	1.25	-0.47	-1.16	MWD
8224.00	90.40	179.50	6260.15	-2010.83	245.14	2016.45	1.01	-0.71	0.71	MWD
8267.00	92.00	179.70	6259.25	-2053.81	245.44	2059.43	3.75	3.72	0.47	MWD
8310.00	92.10	180.20	6257.71	-2096.79	245.48	2102.39	1.19	0.23	1.16	MWD
8352.00	92.20	179.70	6256.14	-2138.76	245.51	2144.35	1.21	0.24	-1.19	MWD
8395.00	92.00	179.70	6254.56	-2181.73	245.74	2187.31	0.47	-0.47	0.00	MWD
8438.00	92.00	178.80	6253.06	-2224.70	246.30	2230.28	2.09	0.00	-2.09	MWD
8480.00	91.50	178.80	6251.78	-2266.67	247.18	2272.26	1.19	-1.19	0.00	MWD
8523.00	91.50	178.60	6250.65	-2309.64	248.16	2315.25	0.46	0.00	-0.47	MWD
8566.00	91.50	178.50	6249.53	-2352.61	249.24	2358.23	0.23	0.00	-0.23	MWD
8608.00	90.80	177.40	6248.68	-2394.58	250.75	2400.22	3.10	-1.67	-2.62	MWD
8651.00	89.70	177.20	6248.50	-2437.53	252.77	2443.21	2.60	-2.56	-0.47	MWD
8694.00	89.90	177.60	6248.65	-2480.48	254.72	2486.20	1.04	0.47	0.93	MWD
8736.00	89.80	177.90	6248.76	-2522.45	256.37	2528.20	0.75	-0.24	0.71	MWD
8779.00	88.50	178.80	6249.40	-2565.43	257.61	2571.19	3.68	-3.02	2.09	MWD
8822.00	88.50	179.20	6250.52	-2608.41	258.36	2614.17	0.93	0.00	0.93	MWD
8864.00	88.20	178.50	6251.73	-2650.38	259.20	2656.16	1.81	-0.71	-1.67	MWD
8907.00	88.10	178.30	6253.12	-2693.34	260.40	2699.13	0.52	-0.23	-0.47	MWD
8950.00	88.00	177.40	6254.58	-2736.28	262.01	2742.11	2.10	-0.23	-2.09	MWD

Precision Directional Services, Inc.

Survey Report

Company: CARRIZO OIL & GAS, INC. Field: Niobrara CONZ'83 Site: Timbro Ranch 17-11-9-59 Well: 17-11-9-59 Wellpath: Original Hole	Date: 06/25/2013 Time: 12:06:23 Page: 4 Co-ordinate(NE) Reference: Well: 17-11-9-59, Grid North Vertical (TVD) Reference: 5021'GL+17"KB 5038.0 Section (VS) Reference: Well (0.00N,0.00E,178.53Azi) Survey Calculation Method: Minimum Curvature Db: Adapti
--	---

Survey

MD ft	Incl deg	Azim deg	TVD ft	+N/-S ft	+E/-W ft	VS ft	DLS deg/100ft	Build deg/100ft	Turn deg/100ft	Tool/Comment
8992.00	87.80	177.20	6256.12	-2778.21	263.99	2784.07	0.67	-0.48	-0.48	MWD
9035.00	87.70	176.90	6257.81	-2821.12	266.20	2827.02	0.73	-0.23	-0.70	MWD
9078.00	88.40	178.30	6259.27	-2864.06	268.00	2869.99	3.64	1.63	3.26	MWD
9120.00	89.20	177.60	6260.15	-2906.02	269.50	2911.98	2.53	1.90	-1.67	MWD
9163.00	89.20	177.80	6260.75	-2948.98	271.23	2954.97	0.47	0.00	0.47	MWD
9205.00	89.00	176.70	6261.41	-2990.93	273.24	2996.95	2.66	-0.48	-2.62	MWD
9248.00	88.30	176.50	6262.42	-3033.84	275.79	3039.91	1.69	-1.63	-0.47	MWD
9291.00	87.80	176.40	6263.89	-3076.73	278.46	3082.86	1.19	-1.16	-0.23	MWD
9333.00	89.90	176.40	6264.73	-3118.64	281.09	3124.82	5.00	5.00	0.00	MWD
9376.00	89.40	177.90	6264.99	-3161.58	283.23	3167.81	3.68	-1.16	3.49	MWD
9419.00	89.70	177.40	6265.33	-3204.54	284.99	3210.80	1.36	0.70	-1.16	MWD
9461.00	90.60	179.70	6265.22	-3246.53	286.06	3252.80	5.88	2.14	5.48	MWD
9504.00	88.90	179.30	6265.41	-3289.52	286.43	3295.79	4.06	-3.95	-0.93	MWD
9547.00	88.50	179.00	6266.38	-3332.51	287.07	3338.77	1.16	-0.93	-0.70	MWD
9589.00	87.80	178.30	6267.74	-3374.47	288.06	3380.75	2.36	-1.67	-1.67	MWD
9632.00	88.10	178.80	6269.28	-3417.43	289.14	3423.72	1.36	0.70	1.16	MWD
9674.00	89.30	179.90	6270.23	-3459.42	289.62	3465.71	3.88	2.86	2.62	MWD
9717.00	88.70	180.00	6270.98	-3502.41	289.66	3508.69	1.41	-1.40	0.23	MWD
9760.00	90.40	180.40	6271.32	-3545.41	289.51	3551.67	4.06	3.95	0.93	MWD
9803.00	90.40	180.00	6271.02	-3588.41	289.36	3594.65	0.93	0.00	-0.93	MWD
9845.00	90.00	179.90	6270.87	-3630.40	289.39	3636.63	0.98	-0.95	-0.24	MWD
9888.00	89.90	179.50	6270.91	-3673.40	289.62	3679.62	0.96	-0.23	-0.93	MWD
9930.00	92.20	179.90	6270.14	-3715.39	289.84	3721.61	5.56	5.48	0.95	MWD
9973.00	92.20	179.50	6268.49	-3758.36	290.06	3764.57	0.93	0.00	-0.93	MWD
10016.00	92.70	179.20	6266.65	-3801.32	290.55	3807.52	1.36	1.16	-0.70	MWD
10058.00	91.60	178.10	6265.08	-3843.28	291.54	3849.49	3.70	-2.62	-2.62	MWD
10101.00	90.60	178.60	6264.25	-3886.25	292.78	3892.48	2.60	-2.33	1.16	MWD
10144.00	90.40	177.80	6263.88	-3929.23	294.13	3935.48	1.92	-0.47	-1.86	MWD
10186.00	89.90	177.60	6263.77	-3971.19	295.82	3977.47	1.28	-1.19	-0.48	MWD
10229.00	89.60	177.20	6263.95	-4014.15	297.77	4020.47	1.16	-0.70	-0.93	MWD
10271.00	89.30	177.10	6264.36	-4056.09	299.85	4062.45	0.75	-0.71	-0.24	MWD
10314.00	90.10	176.90	6264.58	-4099.03	302.10	4105.44	1.92	1.86	-0.47	MWD
10356.00	90.00	176.50	6264.54	-4140.96	304.52	4147.41	0.98	-0.24	-0.95	MWD
10399.00	89.90	176.70	6264.58	-4183.89	307.07	4190.39	0.52	-0.23	0.47	MWD
10442.00	89.80	176.50	6264.69	-4226.81	309.62	4233.36	0.52	-0.23	-0.47	MWD
10485.00	89.60	176.50	6264.92	-4269.73	312.25	4276.34	0.47	-0.47	0.00	MWD
10570.00	89.00	177.10	6265.96	-4354.59	316.99	4361.29	1.00	-0.71	0.71	MWD
10631.00	89.00	177.10	6267.02	-4415.50	320.08	4422.26	0.00	0.00	0.00	PROJECTED to TD

Annotation

MD ft	TVD ft	
6557.00	6271.14	600' entry