

The Road to Excellence Starts with Safety

Sold To #: 300721	Ship To #: 3111559	Quote #:	Sales Order #: 900817874
Customer: WPX ENERGY ROCKY MOUNTAIN LLC-EBUS	Customer Rep: Vallad, Gary		
Well Name: RWF	Well #: 442-4	API/UWI #: 05-045-22083	
Field: Rulison	City (SAP): RIFLE	County/Parish: Garfield	State: Colorado
Lat: N 39.473 deg. OR N 39 deg. 28 min. 23.952 secs.	Long: W 107.889 deg. OR W -108 deg. 6 min. 39.805 secs.		
Contractor: NABORS 574	Rig/Platform Name/Num: NABORS 574		
Job Purpose: Cement Surface Casing			
Well Type: Development Well	Job Type: Cement Surface Casing		
Sales Person: MAYO, MARK	Srv Supervisor: ARNOLD, EDWARD	MBU ID Emp #: 439784	

Job Personnel

HES Emp Name	Exp Hrs	Emp #	HES Emp Name	Exp Hrs	Emp #	HES Emp Name	Exp Hrs	Emp #
ARNOLD, EDWARD John	9.5	439784	LAULAINEN, ROGER Edward	9.3	524413	SALAZAR, PAUL Omar	9.5	445614

Equipment

HES Unit #	Distance-1 way	HES Unit #	Distance-1 way	HES Unit #	Distance-1 way	HES Unit #	Distance-1 way
10567589C	60 mile	10784064	60 mile	10951246	60 mile	11006314	60 mile
11808829	60 mile						

Job Hours

Date	On Location Hours	Operating Hours	Date	On Location Hours	Operating Hours	Date	On Location Hours	Operating Hours
2013-10-14	9.3	4						
TOTAL			Total is the sum of each column separately					

Job

Formation Name	Formation Depth (MD)	Top	Bottom	Job depth MD	Job depth TVD	Water Depth	Perforation Depth (MD)	From	To
				1170. ft	1170. ft				
Form Type			BHST						
Job depth MD									
Water Depth									
Perforation Depth (MD)									

Job Times

Date	Time	Time Zone
13 - Oct - 2013	20:30	MST
14 - Oct - 2013	00:00	MST
14 - Oct - 2013	06:49	MST
14 - Oct - 2013	08:11	MST
14 - Oct - 2013	09:30	MST

Well Data

Description	New / Used	Max pressure psig	Size in	ID in	Weight lbm/ft	Thread	Grade	Top MD ft	Bottom MD ft	Top TVD ft	Bottom TVD ft
-------------	------------	-------------------	---------	-------	---------------	--------	-------	-----------	--------------	------------	---------------

Tools and Accessories

Type	Size	Qty	Make	Depth	Type	Size	Qty	Make	Depth	Type	Size	Qty	Make
Guide Shoe					Packer					Top Plug	9 5/8"	1	HES
Float Shoe					Bridge Plug					Bottom Plug			
Float Collar					Retainer					SSR plug set			
Insert Float										Plug Container	9 5/8"	1	HES
Stage Tool										Centralizers			

Miscellaneous Materials

Gelling Agt	Conc	Surfactant	Conc	Acid Type	Qty	Conc	%
Treatment Fld	Conc	Inhibitor	Conc	Sand Type	Size	Qty	

Fluid Data

Fluid #	Stage Type	Fluid Name	Qty	Qty uom	Mixing Density lbm/gal	Yield ft3/sk	Mix Fluid Gal/sk	Rate bbl/min	Total Mix Fluid Gal/sk
---------	------------	------------	-----	---------	------------------------	--------------	------------------	--------------	------------------------

Stage/Plug #: 1

Fluid #	Stage Type	Fluid Name	Qty	Qty uom	Mixing Density uom	Yield uom	Mix Fluid uom	Rate uom	Total Mix Fluid uom
---------	------------	------------	-----	---------	--------------------	-----------	---------------	----------	---------------------

Stage/Plug #: 1									
Fluid #	Stage Type	Fluid Name	Qty	Qty uom	Mixing Density lbm/gal	Yield ft ³ /sk	Mix Fluid Gal/sk	Rate bbl/min	Total Mix Fluid Gal/sk
1	Fresh Water Spacer		20.00	bbl	.	.0	.0	4	
2	VariCemGJ1 Lead Cement	VARICEM (TM) CEMENT (452009)	160.0	sacks	12.3	2.38	13.75	7	13.75
	13.75 Gal	FRESH WATER							
3	VersaCem GJ1 Tail Cement	VARICEM (TM) CEMENT (452009)	160.0	sacks	12.8	2.11	11.75	6	11.75
	11.75 Gal	FRESH WATER							
4	Fresh Water Displacement		86.00	bbl	.	.0	.0	9.5	
Calculated Values		Pressures		Volumes					
Displacement	86.1	Shut In: Instant		Lost Returns	0	Cement Slurry	127.9	Pad	
Top Of Cement	SURFACE	5 Min		Cement Returns	20	Actual Displacement	86.1	Treatment	
Frac Gradient		15 Min		Spacers	20	Load and Breakdown		Total Job	234
Rates									
Circulating	RIG	Mixing	6.5	Displacement	9.5	Avg. Job			7
Cement Left In Pipe	Amount	47.5 ft	Reason	Shoe Joint					
Frac Ring # 1 @	ID	Frac ring # 2 @	ID	Frac Ring # 3 @	ID	Frac Ring # 4 @	ID		
The Information Stated Herein Is Correct				Customer Representative Signature					

The Road to Excellence Starts with Safety

Sold To #: 300721	Ship To #: 3111559	Quote #:	Sales Order #: 900817874
Customer: WPX ENERGY ROCKY MOUNTAIN LLC-EBUS	Customer Rep: Vallad, Gary		
Well Name: RWF	Well #: 442-4	API/UWI #: 05-045-22083	
Field: Rulison	City (SAP): RIFLE	County/Parish: Garfield	State: Colorado
Legal Description:			
Lat: N 39.473 deg. OR N 39 deg. 28 min. 23.952 secs.		Long: W 107.889 deg. OR W -108 deg. 6 min. 39.805 secs.	
Contractor: NABORS 574	Rig/Platform Name/Num: NABORS 574		
Job Purpose: Cement Surface Casing			Ticket Amount:
Well Type: Development Well	Job Type: Cement Surface Casing		
Sales Person: MAYO, MARK	Srv Supervisor: ARNOLD, EDWARD	MBU ID Emp #: 439784	

Activity Description	Date/Time	Cht #	Rate bbl/min	Volume bbl		Pressure psig		Comments
				Stage	Total	Tubing	Casing	
Call Out	10/13/2013 20:30							
Pre-Convoy Safety Meeting	10/13/2013 22:15							Including entire cement crew.
Crew Leave Yard	10/13/2013 22:30							
Arrive At Loc	10/14/2013 00:00							Rig still Running casing.
Assessment Of Location Safety Meeting	10/14/2013 05:00							Water; PH 7; KCL 200; So4 <200; Fe 0; Calcium 120; Chlorides 0; Temp 55.
Pre-Rig Up Safety Meeting	10/14/2013 05:15							Including entire cement crew.
Rig-Up Equipment	10/14/2013 05:30							1 Elite # 3; 1 660 bulk truck; 1 hard line to floor; 1 line to upright; 1 line to rig tank. 9.625" compact head.
Rig-Up Completed	10/14/2013 06:15							
Pre-Job Safety Meeting	10/14/2013 06:30							Including everyone on location.
Start Job	10/14/2013 06:49							TD 1170; TP 1155; SJ 47.5; OH 13 1/2"; Casing 9.625" 32.3# H-40; Mud 10.2 ppg.
Pump Water	10/14/2013 06:51		2	2			38.0	Fill lines with fresh water.
Test Lines	10/14/2013 06:55					2730.0		Good pressure test, no leaks.
Pump Spacer 1	10/14/2013 06:59		4	20			116.0	20 BBL fresh water spacer.
Pump Lead Cement	10/14/2013 07:09		7	67.8			270.0	160 sks Lead Cement, 12.3 ppg, 2.38 cf3, 13.75 gal/sk.

Cementing Job Log

Activity Description	Date/Time	Cht #	Rate bbl/min	Volume bbl		Pressure psig		Comments
				Stage	Total	Tubing	Casing	
Pump Tail Cement	10/14/2013 07:20		6	60.1			210.0	160 sks Tail Cement, 12.8 ppg, 2.11 cf3, 11.75 gal/sk.
Shutdown	10/14/2013 07:30							
Drop Plug	10/14/2013 07:32							Plug left container.
Pump Displacement	10/14/2013 07:33		9.5		76.1		540.0	Fresh water displacement.
Slow Rate	10/14/2013 07:44				10		300.0	Slow rate last 10 BBL's of displacement prior to bumping the plug.
Bump Plug	10/14/2013 07:51						800.0	Bumped plug, took 500 PSI over. Pressure came up to 800 then bled off.
Check Floats	10/14/2013 07:53							Floats held, 1/2 BBL back. 20 BBL's good cement to surface.
Bump Plug	10/14/2013 07:57		1	1			900.0	Rebump plug and brought pressure to 900 psi. Checked landing joint for leaks. No leaks on landing joint, did observe fluid coming from annulus. Bleed pressure off and flow from annulus stopped.
Check Floats	10/14/2013 08:00							1/2 BBL's back. Co Rep called in and discussed with engineer. I called in and spoke to Service Leader. All parties Agreed on leaving cement head on and shutting valve on head during WOC time.
End Job	10/14/2013 08:11							
Pre-Rig Down Safety Meeting	10/14/2013 08:15							Including entire cement crew.
Rig-Down Equipment	10/14/2013 08:30							
Rig-Down Completed	10/14/2013 09:00							
Pre-Convoy Safety Meeting	10/14/2013 09:15							Including entire cement crew.
Activity Description	Date/Time	Cht	Rate bbl/min	Volume bbl		Pressure psig		Comments

Sold To #: 300721

Ship To #: 3111559

Quote #:

Sales Order #: 900817874

SUMMIT Version: 7.3.0106

Sunday, October 27, 2013 11:59:00

HALLIBURTON

Cementing Job Log

		#		Stage	Total	Tubing	Casing	
Crew Leave Location	10/14/2013 09:30							Crew leave location for Service Center or another location.
Other	10/14/2013 09:30							Thank You for using Halliburton. Ed Arnold and Crew.

Sold To # : 300721

Ship To # : 3111559

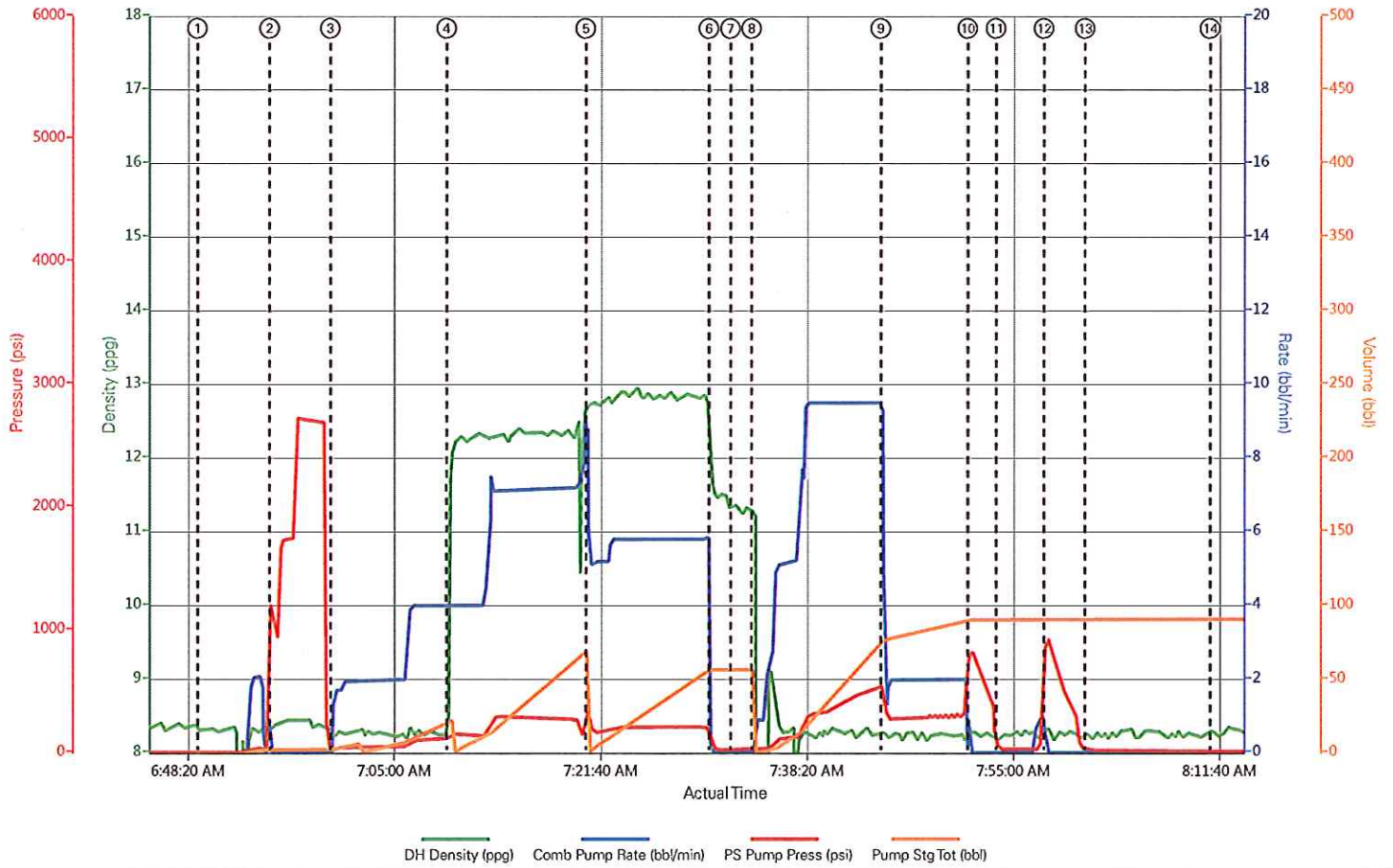
Quote # :

Sales Order # : 900817874

SUMMIT Version: 7.3.0106

Sunday, October 27, 2013 11:59:00

WPX - RWF 442-4 - 9 5/8" SURFACE



① Start Job ③ Pump Spacer 1 ⑤ Pump Tail Cement ⑦ Drop Plug ⑨ Slow Rate ⑪ Check Floats ⑬ Check Floats
 ② Test Lines ④ Pump Lead Cement ⑥ Shutdown ⑧ Pump Displacement ⑩ Bump Plug ⑫ Bump Plug ⑭ End Job

▼ Halliburton | iCem Service®

Created: 2013-10-14 05:57:41, Version: 1.4.96

Edit

Customer: WPX ENERGY ROCKY MOUNTAIN LLC-EBUS

Job Date: 10/14/2013 5:59:42 AM

Well: RWF 442-4

Representative: MATT HUDSON

Sales Order #: 900817874

ELITE #3: ED ARNOLD / RODGER LAULAINEN