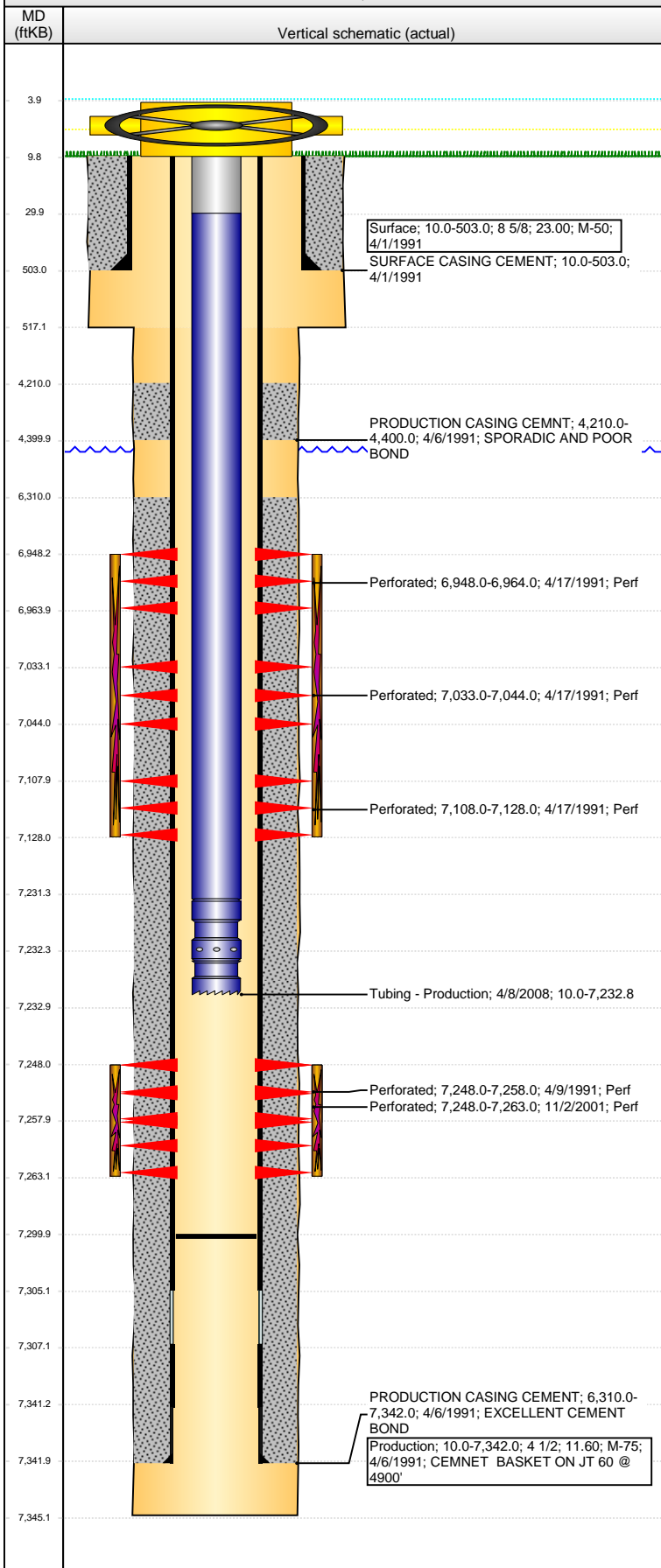


**Well Name: SCHMIDT 25-16F**

VERTICAL - ORIGINAL HOLE, 2/10/2014 2:12:40 PM



## Well Header

API	Business Unit	District	Well Config
05-123-14945	WATTENBERG	15	VERTICAL
Original KB Elevation (ft)	KB - GL / MSL (ftKB)	Spud Date	P & A Date
4,807.00	10.00	4/1/1991	

## Comment

## Directions To Well

WCR 40 & 37, NORTH 1/10, WEST 600' INTO

## Congressional Location

Quarter 1	Quarter 2	Quarter 3	Quarter 4	Section	Township	Twnshp N...	Range	Rng E/W Dir
		SE	SE	25	4	N	66	W

## Bottom Hole Location

North-South Distance (ft)	From N or S Line	East-West Distance (ft)	From E or W Line

## Plug Back Total Depths

Date	Depth (ftKB)	Method	Com
4/6/1991	7,305.0	CASING TALLY	
4/8/1991	7,294.0	CASED HOLE LOG	
6/28/2007	7,226.0	TAG	
3/25/2008	7,300.0	TAG	

## Wellbore Sections

Section Des	Size (in)	Act Top, MD (ftKB)	Act Btm, MD (ftKB)
SURFACE	12 1/4	10.0	517.0
PRODUCTION	7 7/8	517.0	7,345.0

## Zone Statuses

Zone Name	Status Date	Status	Job
CODELL	4/24/1991	PR	DRILLING/COMPLETION - ORIGINAL, 4/1/1991 00:00
CODELL	11/13/2001	PR	RE-FRAC, 11/9/2001 00:00
CODELL	2/29/2008	PR	TRI-FRAC, 3/24/2008 14:00
NIOBRARA	4/24/1991	PR	DRILLING/COMPLETION - ORIGINAL, 4/1/1991 00:00

## Casing Strings

### Surface, 503.0ftKB

Casing Description	Run Date	OD (in)	Wt/Len (l...)	Grade	Top, MD (ft...)	MD (ftKB)
Surface	4/1/1991	8 5/8	23.00	M-50	10.0	503.0

### Production, 7,342.0ftKB

Casing Description	Run Date	OD (in)	Wt/Len (l...)	Grade	Top, MD (ft...)	MD (ftKB)
Production	4/6/1991	4 1/2	11.60	M-75	10.0	7,342.0

## Cement

Description	Top Depth (ftKB)	Bottom Depth (ftKB)
SURFACE CASING CEMENT	10.0	503.0
Description	Top Depth (ftKB)	Bottom Depth (ftKB)
PRODUCTION CASING CEMENT	4,210.0	4,400.0
Description	Top Depth (ftKB)	Bottom Depth (ftKB)
PRODUCTION CASING CEMENT	6,310.0	7,342.0

## Tubing Components

Item Des	OD (in)	Wt (lb/ft)	Grade	Jts	Len (ft)	Btm (ftKB)	Btm (TVD) (ftKB)
Tubing Pup Joint	2 3/8			2	20.00	30.0	
Tubing	2 3/8	4.70	J-55	232	7,201.40	7,231.4	
Seal Nipple	2 3/8			1	1.00	7,232.4	
Notched collar	2 3/8			1	0.40	7,232.8	

## Perforation Data

Zone	Bnch/St g	Entered Shot Total	Top (ftKB)	Btm (ftKB)	Date
NIOBRARA, ORIGINAL HOLE	A	10	6,948.00	6,964.00	4/17/1991
NIOBRARA, ORIGINAL HOLE	B	10	7,033.00	7,044.00	4/17/1991
NIOBRARA, ORIGINAL HOLE	C	8	7,108.00	7,128.00	4/17/1991
CODELL, ORIGINAL HOLE		40	7,248.00	7,258.00	4/9/1991
CODELL, ORIGINAL HOLE		60	7,248.00	7,263.00	11/2/2001

## Stimulations & Treatments

Date	Zone	Primary Job Type
4/11/1991	CODELL, ORIGINAL HOLE	DRILLING/COMPLETION - ORIGINAL
Technical Result	Tech Result Details	Tech Result Note

## Comment

**Well Name: SCHMIDT 25-16F**

VERTICAL - ORIGINAL HOLE, 2/10/2014 2:12:42 PM

## Stimulations & Treatments

Date	Zone	Primary Job Type
4/18/1991	NIOBRARA, ORIGINAL HOLE	DRILLING/COMPLETION - ORIGINAL

Technical Result	Tech Result Details	Tech Result Note

Comment

Date	Zone	Primary Job Type
11/9/2001	CODELL, ORIGINAL HOLE	RE-FRAC

Technical Result	Tech Result Details	Tech Result Note

Comment

Date	Zone	Primary Job Type
4/4/2008	CODELL, ORIGINAL HOLE	TRI-FRAC

Technical Result	Tech Result Details	Tech Result Note
Success	According to Plan	

Comment  
PRE-ISIP = 3243 PSI, 5-MIN = 2152 PSI, GEL CIRCULATING PUMP BEGAN SMOKING BADLY AND HAD TO BE SD AT THE 470 BBL MARK. UNABLE TO USE FOR THE REMAINDER OF THE TREATMENT. VISCOSITY 29 CP WHEN SD AND TRACKED LOWER AVG 27.3 CP. THE PRESSURE RESPONSE TURNED POSITIVE IN THE RAMP THROUGH THE REMAINDER OF THE TREATMENT (NOLTE=0.37). POST-ISIP = 3637 PSI, 5-MIN = 3069 PSI. SI - 29 MINUTES WITH 2600 PSI.

## Other In Hole

Run Date	Des	OD (in)	Top (ftKB)	Btm (ftKB)

## Logs

Date	Type	Top, MD (ftKB)	Btm, MD (ftKB)
4/5/1991	Compensated Density	502.0	7,346.0
4/5/1991	Induction	502.0	7,346.0
4/8/1991	Sonic	6,200.0	7,290.0
3/16/2012	GYRO	10.0	7,200.0

