



DDC
3222 N. 6th Mile Road
Casper, WY 82604

RM-13846

1":100' - TVD
11/6/2013 11:46:00 AM

Oper. Company: Noble Energy Inc
Country: USA
State / Province: CO
County / Parish: Weld
Started: 11/02/2013 02:00 AM

API/UWI: 05-123-37528
Field: Wattenberg
Well: Rohn State LD09-64-1HN
Rig: H&P 326
Ended: 11/06/2013 11:00 AM

Personnel

Day Hand: Bob Kubistek
Night Hand: Josh Jann
Comp. Emp: DDC

Location

Latitude: 40° 45' 51.156 N
Longitude: 103° 51' 41.940 W
Elev. GL: 4716
Elev. DF: 30
Elev. KB: 4746

Hole Data

Size	From	To
13 3/4	0	1255
8 3/4	1255	6144
6 1/8	6144	9687

Casing Data

Size	From	To
9 5/8	0	1255
7	1255	6144
4 1/2	6144	9687

Bit Sizes

Size	From	To
13 3/4	0	1255
8 3/4	1255	6144
6 1/8	6144	9687

Mud Data

Type	Weight	Density	Viscosity	Rm	Rmf	Rmc	From	To
LSND	10.3		37				0	0

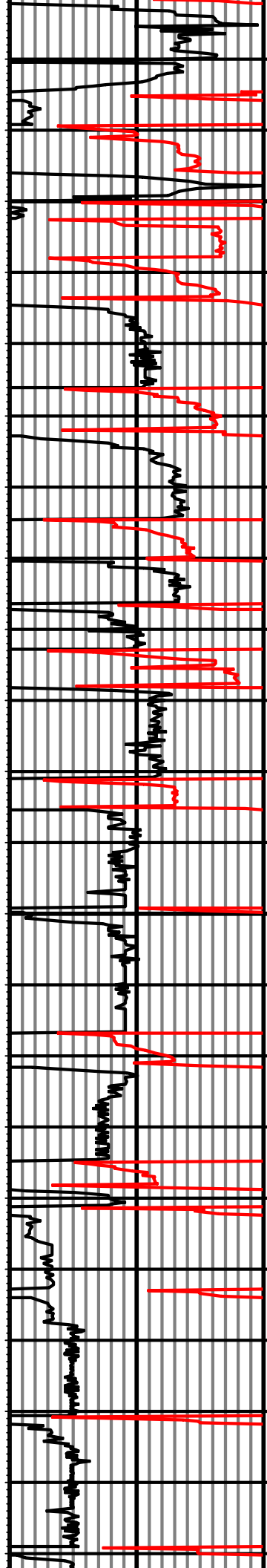
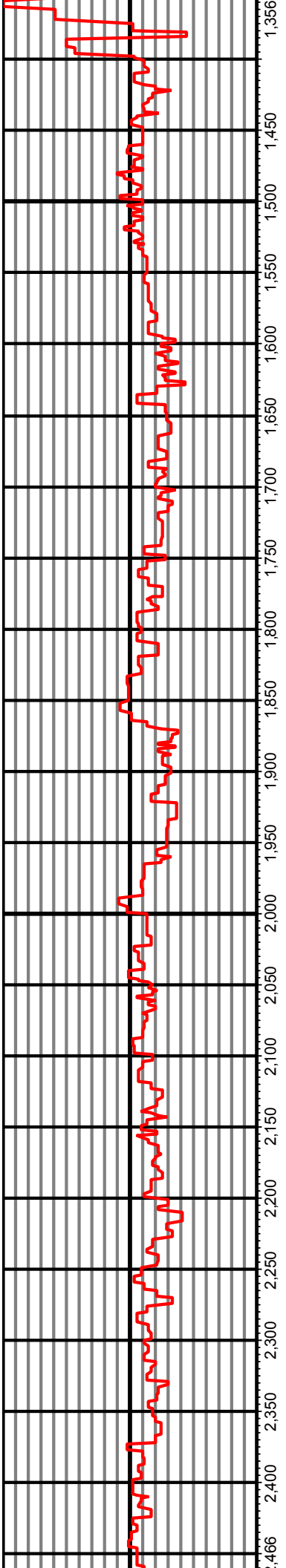
Tool Run Data

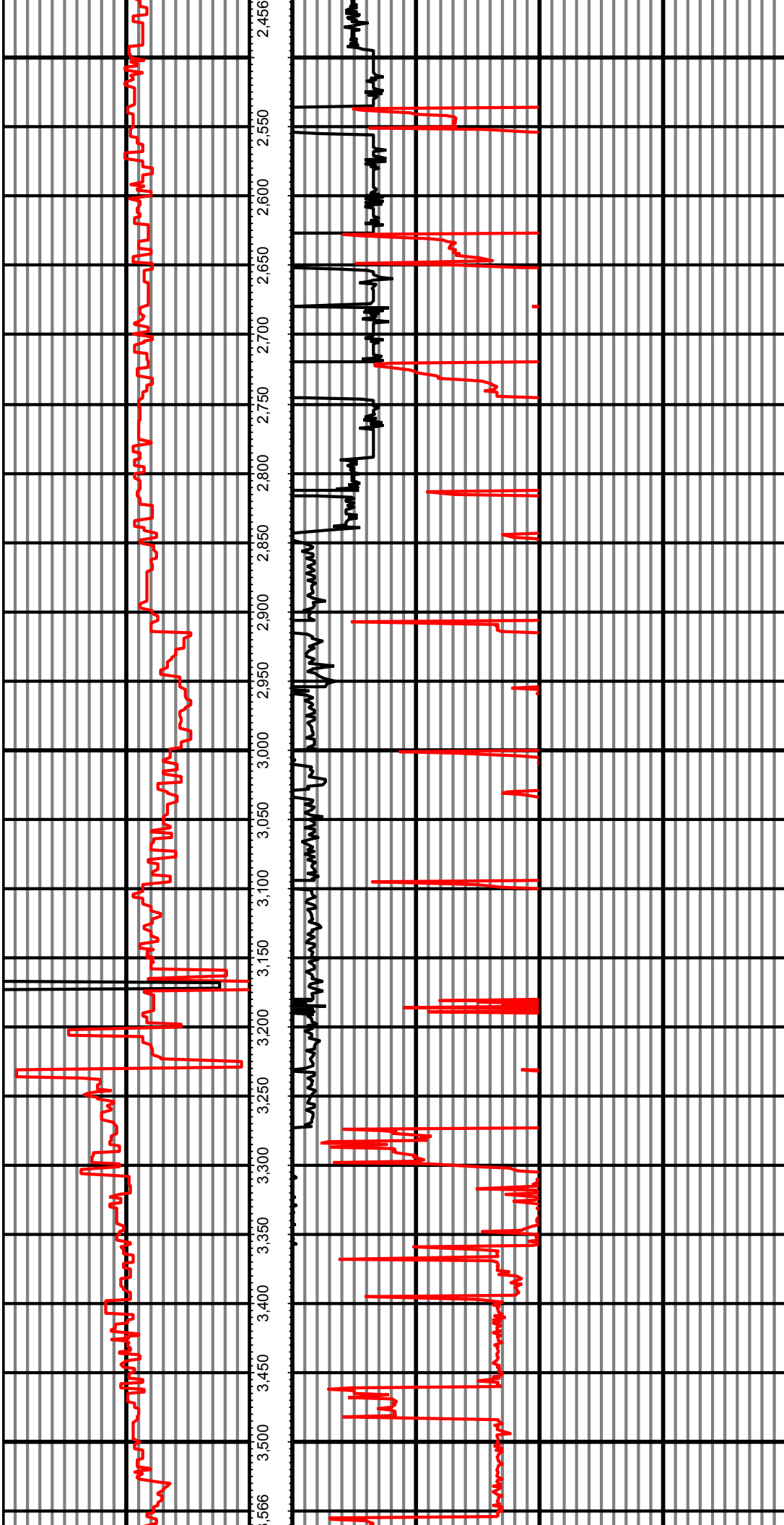
Serial Number	Gamma Offset	Resist. Offset	Start Time	Start Depth	End Time	End Depth
1862	36	0	11/2/2013 2:00:40 AM	1255	11/3/2013 1:30:40 AM	5015
1862	45	0	11/3/2013 3:30:26 AM	5015	11/3/2013 1:24:26 AM	6144
1862	52	0	11/4/2013 11:30:35 PM	6144	11/6/2013 11:00:35 AM	9687

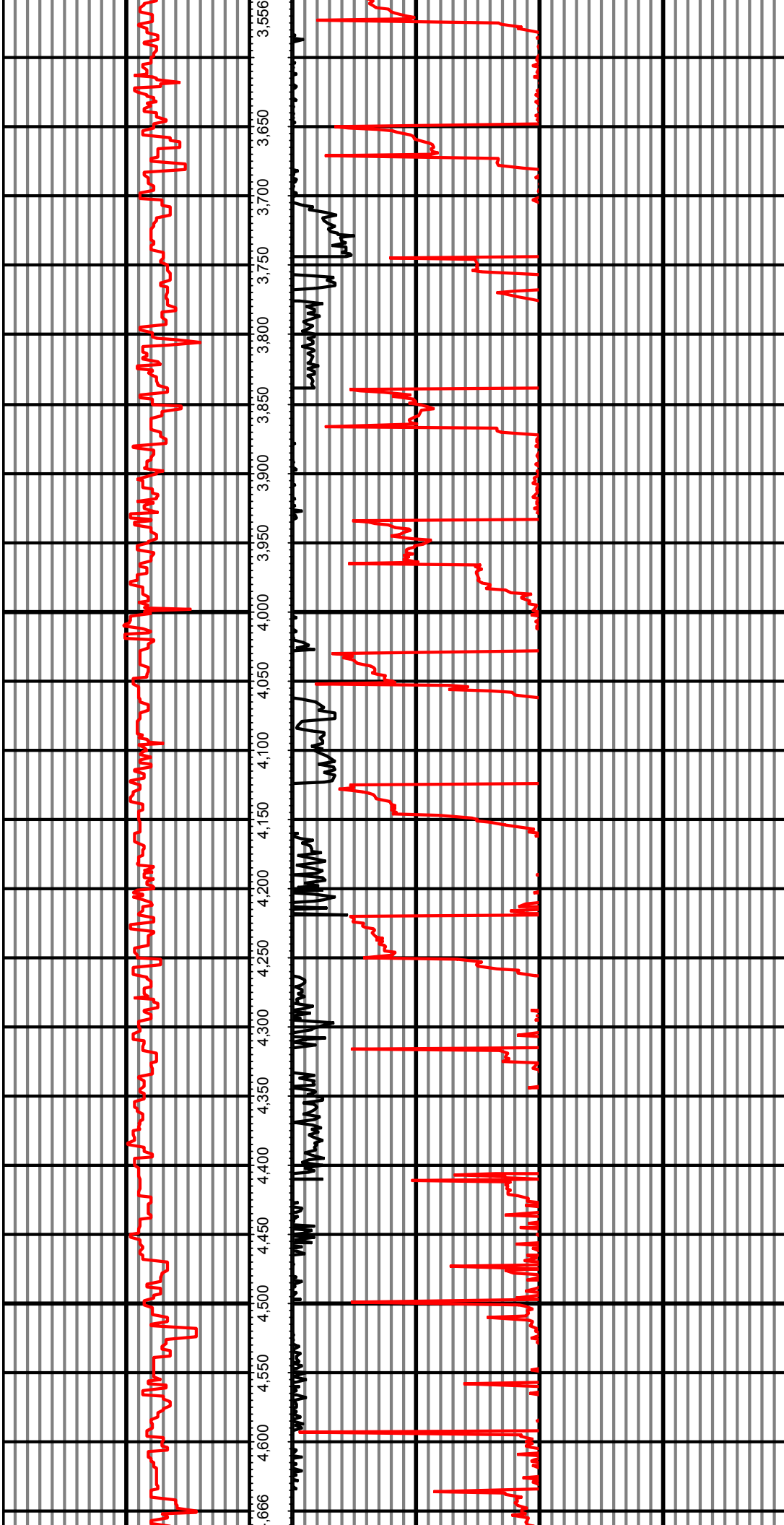
All interpretations are opinions based on inferences from electrical or other measurements and we cannot and do not guarantee the accuracy or correctness of any interpretation, and we shall not except in the case of gross or willful negligence on our part, be liable or responsible for any loss, cost damages or expenses incurred or sustained by anyone resulting from an interpretation made by any of our officers, agents, or employees.

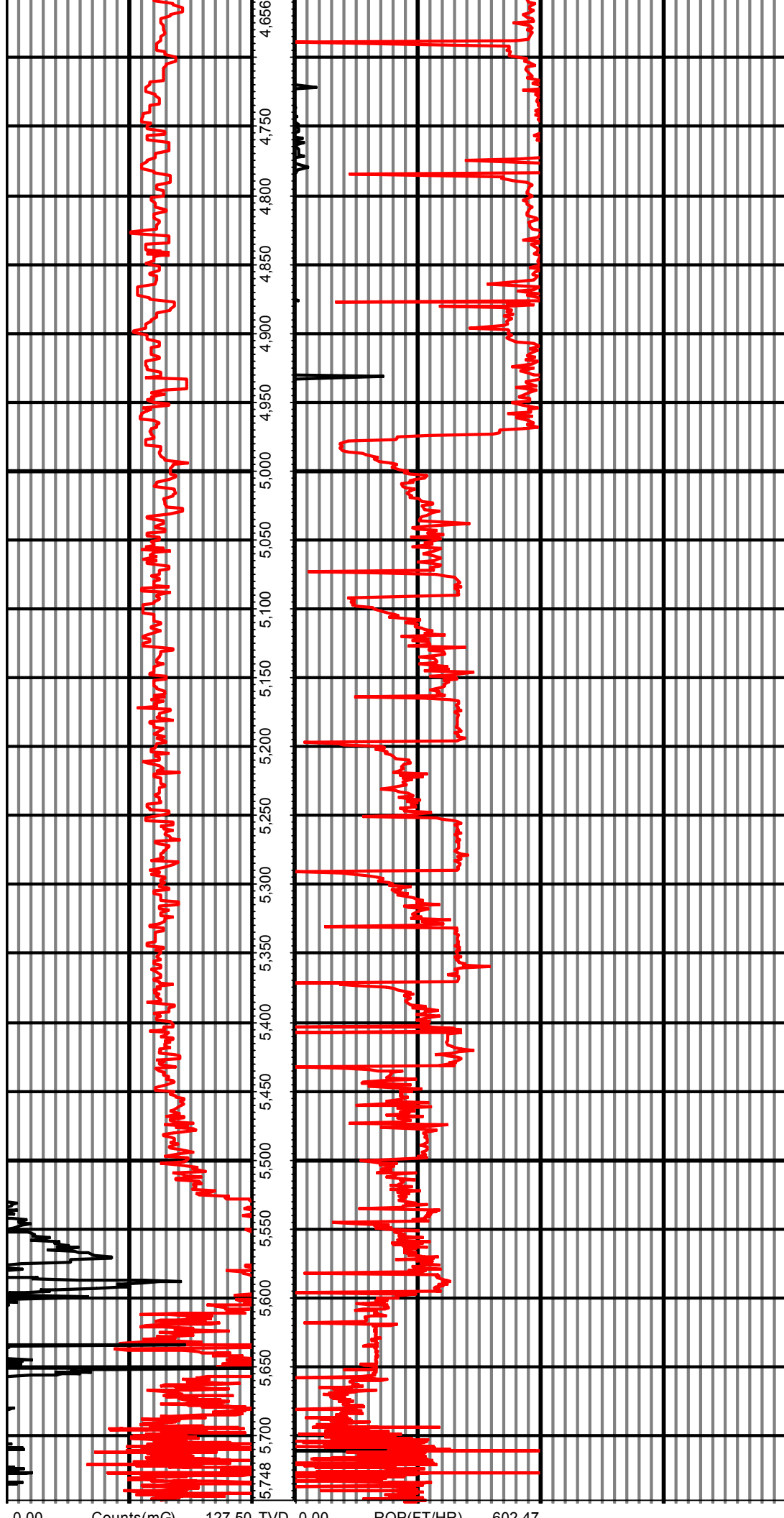
0.00 Counts(mG) 127.50 TVD 0.00 ROP(FT/HR) 602.47
127.50 2 255.00 FT 602.47 2 1,204.94











0.00	Counts(mG)	127.50	FT	0.00	ROI (1/min)	602.47
127.50	2	255.00		602.47	2	1,204.94