

T12S, R89W, 6th P.M.

GUNNISON ENERGY CORPORATION

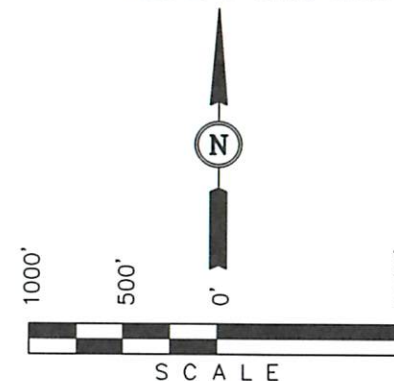
Well location, DGU 1289 FEDERAL 17-13 CS2, located as shown in the NW 1/4 SW 1/4 of Section 17, T12S, R89W, 6th P.M., Gunnison County, Colorado.

BASIS OF ELEVATION

SPOT ELEVATION LOCATED A ROAD INTERSECTION IN THE NE 1/4 OF SECTION 9, T11S, R90W, 6th P.M. TAKEN FROM THE BULL MOUNTAIN QUADRANGLE, COLORADO, GUNNISON COUNTY, 7.5 MINUTE SERIES (TOPO GRAPHICAL MAP) PUBLISHED BY THE UNITED STATES DEPARTMENT OF THE INTERIOR, GEOLOGICAL SURVEY. SAID ELEVATION IS MARKED AS BEING 7487 FEET.

BASIS OF BEARINGS

BASIS OF BEARINGS IS A G.P.S. OBSERVATION.



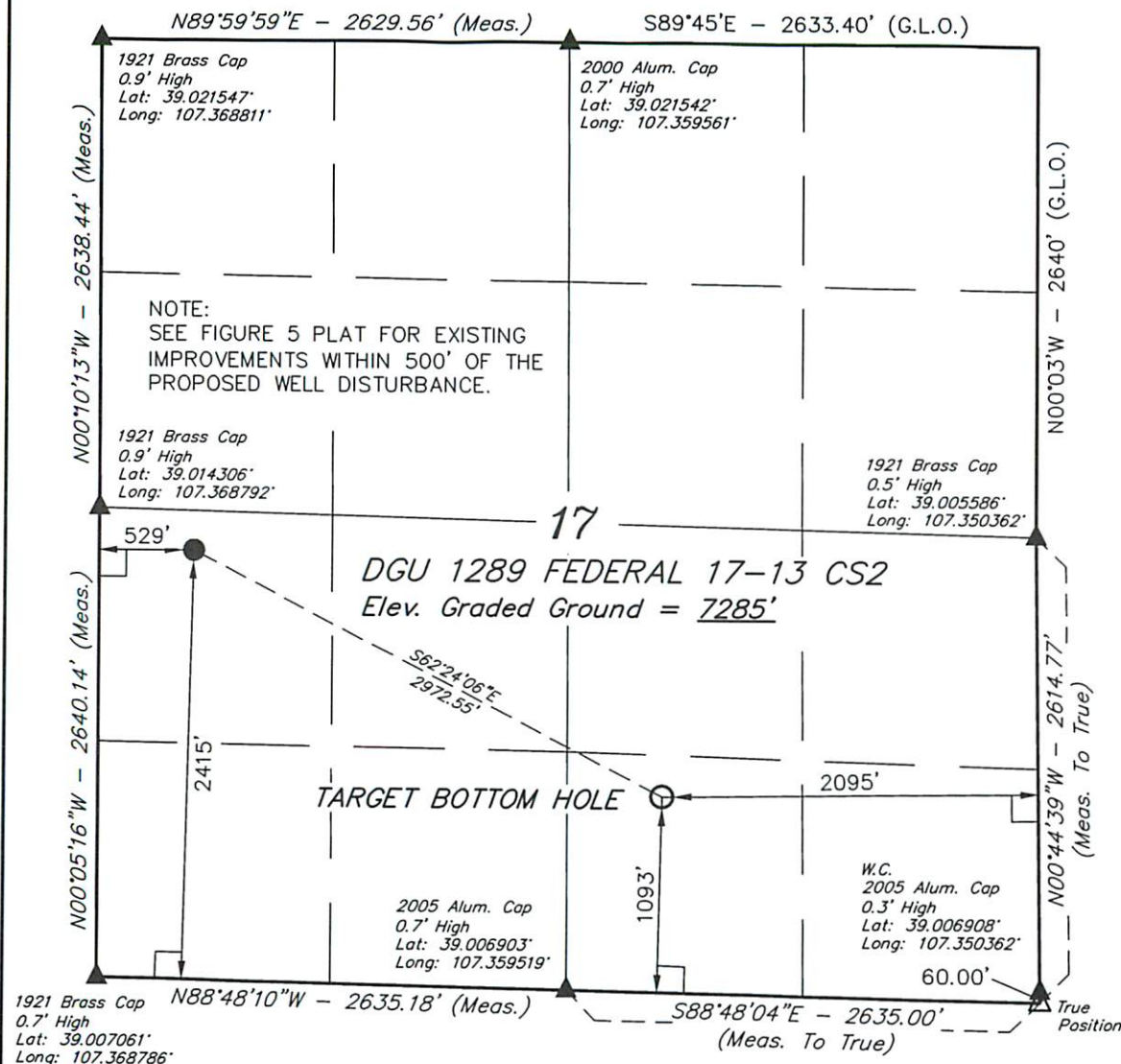
CERTIFICATE

THIS IS TO CERTIFY THAT THE ABOVE PLAT WAS PREPARED FROM FIELD NOTES OF ACTUAL SURVEYS MADE BY ME OR UNDER MY SUPERVISION AND THAT THE SAME ARE TRUE AND CORRECT TO THE BEST OF MY KNOWLEDGE AND BELIEF.

REGISTERED LAND SURVEYOR
CHRISTOPHER B.B. M.D.
STATE OF COLORADO

REVISED: 12-12-13

UINTAH ENGINEERING & LAND SURVEYING
85 SOUTH 200 EAST - VERNAL, UTAH 84078
(435) 789-1017



LEGEND:

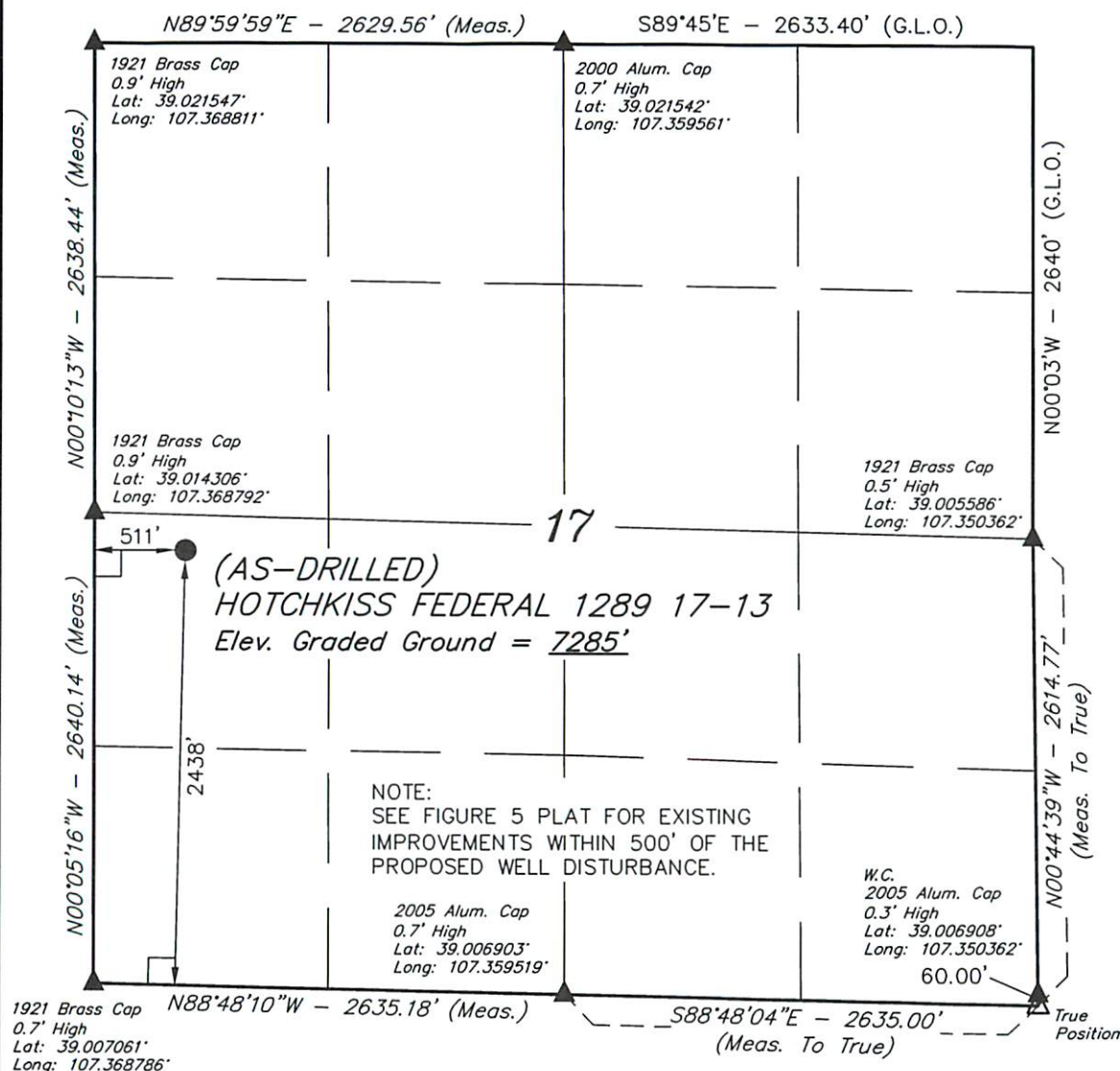
- └─┘ = 90° SYMBOL
- = PROPOSED WELL HEAD.
- ▲ = SECTION CORNERS LOCATED.
- △ = SECTION CORNERS RE-ESTABLISHED.
(Not Set on Ground.)

PDOP = 2.2

NAD 83 (TARGET BOTTOM HOLE)	NAD 83 (SURFACE LOCATION)
LATITUDE = 39°00'35.53" (39.009869)	LATITUDE = 39°00'49.16" (39.013656)
LONGITUDE = 107°21'27.61" (107.357669)	LONGITUDE = 107°22'00.95" (107.366931)
NAD 27 (TARGET BOTTOM HOLE)	NAD 27 (SURFACE LOCATION)
LATITUDE = 39°00'35.57" (39.009881)	LATITUDE = 39°00'49.20" (39.013667)
LONGITUDE = 107°21'25.42" (107.357061)	LONGITUDE = 107°21'58.76" (107.366322)
UTM COORD.: NAD 1927 / ZONE 13 N: 14174211.60 E: 970827.99	UTM COORD.: NAD 1927 / ZONE 13 N: 14175658.63 E: 968232.73

SCALE 1" = 1000'	DATE SURVEYED: 09-24-13	DATE DRAWN: 11-11-13
PARTY JARED CHRISTOPHER B.B. M.D.	REFERENCES G.L.O. PLAT	
WEATHER WARM	FILE GUNNISON ENERGY CORPORATION	

T12S, R89W, 6th P.M.



LEGEND:

- └─┘ = 90° SYMBOL
- = PROPOSED WELL HEAD.
- ▲ = SECTION CORNERS LOCATED.
- △ = SECTION CORNERS RE-ESTABLISHED.
(Not Set on Ground.)

PDOP = 1.4

NAD 83 (AS-DRILLED SURFACE LOCATION)
LATITUDE = 39°00'49.40" (39.013722)
LONGITUDE = 107°22'01.18" (107.366994)
NAD 27 (AS-DRILLED SURFACE LOCATION)
LATITUDE = 39°00'49.44" (39.013733)
LONGITUDE = 107°21'58.99" (107.366386)
UTM COORD.: NAD 1927 / ZONE 13
N: 14175683.38 E: 968215.21

GUNNISON ENERGY CORPORATION

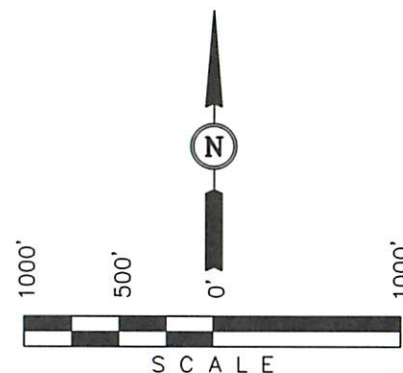
Well location, (AS-DRILLED) HOTCHKISS FEDERAL 1289 17-13, located as shown in the NW 1/4 SW 1/4 of Section 17, T12S, R89W, 6th P.M., Gunnison County, Colorado.

BASIS OF ELEVATION

SPOT ELEVATION LOCATED A ROAD INTERSECTION IN THE NE 1/4 OF SECTION 9, T11S, R90W, 6th P.M. TAKEN FROM THE BULL MOUNTAIN QUADRANGLE, COLORADO, GUNNISON COUNTY, 7.5 MINUTE SERIES (TOPO GRAPHICAL MAP) PUBLISHED BY THE UNITED STATES DEPARTMENT OF THE INTERIOR, GEOLOGICAL SURVEY. SAID ELEVATION IS MARKED AS BEING 7487 FEET.

BASIS OF BEARINGS

BASIS OF BEARINGS IS A G.P.S. OBSERVATION.



CERTIFICATE

THIS IS TO CERTIFY THAT THE ABOVE PLAT WAS PREPARED FROM FIELD NOTES OF ACTUAL SURVEYS MADE BY ME OR UNDER MY SUPERVISION AND THAT THE SAME ARE TRUE AND CORRECT TO THE BEST OF MY KNOWLEDGE AND BELIEF.

REGISTERED LAND SURVEYOR
REGISTRATION NO. 17492
STATE OF COLORADO

REVISED: 12-12-13

UINTAH ENGINEERING & LAND SURVEYING
85 SOUTH 200 EAST - VERNAL, UTAH 84078
(435) 789-1017

SCALE 1" = 1000'	DATE SURVEYED: 09-24-13	DATE DRAWN: 11-11-13
PARTY JARED CHRISTOPHER B.B. M.D.	REFERENCES G.L.O. PLAT	
WEATHER WARM	FILE GUNNISON ENERGY CORPORATION	