



Scale 1:240 (5"=100') Imperial  
Measured Depth Log

Well Name: D&C Farms 36C-33HZ  
 Location: Weld County, CO.  
 License Number: 05123378930000  
 Spud Date: 09/21/13  
 Surface Coordinates: 767' FSL & 2186' FWL, SEC. 28, T1N-R67W  
 Region: Weld County  
 Drilling Completed: 9/28/13  
 Bottom Hole Coordinates: 460' FSL & 2450' FWL, SEC. 33, T1N-R67W  
 Ground Elevation (ft): 5026' K.B. Elevation (ft): 5039'  
 Logged Interval (ft): 7200' To: 8155' Total Depth (ft): 12952'  
 Formation: Codell  
 Type of Drilling Fluid: Water Based Mud

Printed by MUD.LOG from WellSight Systems 1-800-447-1534 www.WellSight.com

#### OPERATOR

Company: Anadarko Petroleum Corporation  
 Address: Granite Tower  
 1099 18th Street, #1800  
 Denver, CO 80202

#### GEOLOGIST

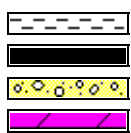
Name: Scott Crozier / Pat Hill  
 Company: Great Divide Consulting, Inc  
 Address: P.O. Box 630263  
 Highlands Ranch, CO 80163

#### Comments

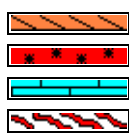
#### ROCK TYPES



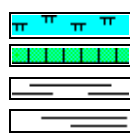
Anhy  
Bent  
Brec  
Cht



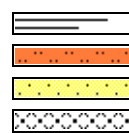
Clyst  
Coal  
Congl  
Dol



Gyp  
Igne  
Lmst  
Meta



Mrlst  
Salt  
Shale  
Shcol



Shgy  
Sltst  
Ss  
Till

# ACCESSORIES

## MINERAL

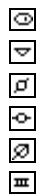
Anhy  
Arggrn  
Arg  
Bent  
Bit  
Brecfrag  
Calc  
Carb  
Chtdk  
Chtlit  
Dol  
Feldspar  
Ferrpel  
Ferr  
Glau



Gyp  
Hvymin  
Kaol  
Marl  
Minxl  
Nodule  
Phos  
Pyr  
Salt  
Sandy  
Silt  
Sil  
Sulphur  
Tuff

## FOSSIL

Algae  
Amph  
Belm  
Bioclst  
Brach  
Bryozoa  
Cephal  
Coral  
Crin  
Echin  
Fish  
Foram  
Fossil  
Gastro  
Oolite



Ostra  
Pelec  
Pellet  
Pisolite  
Plant  
Strom

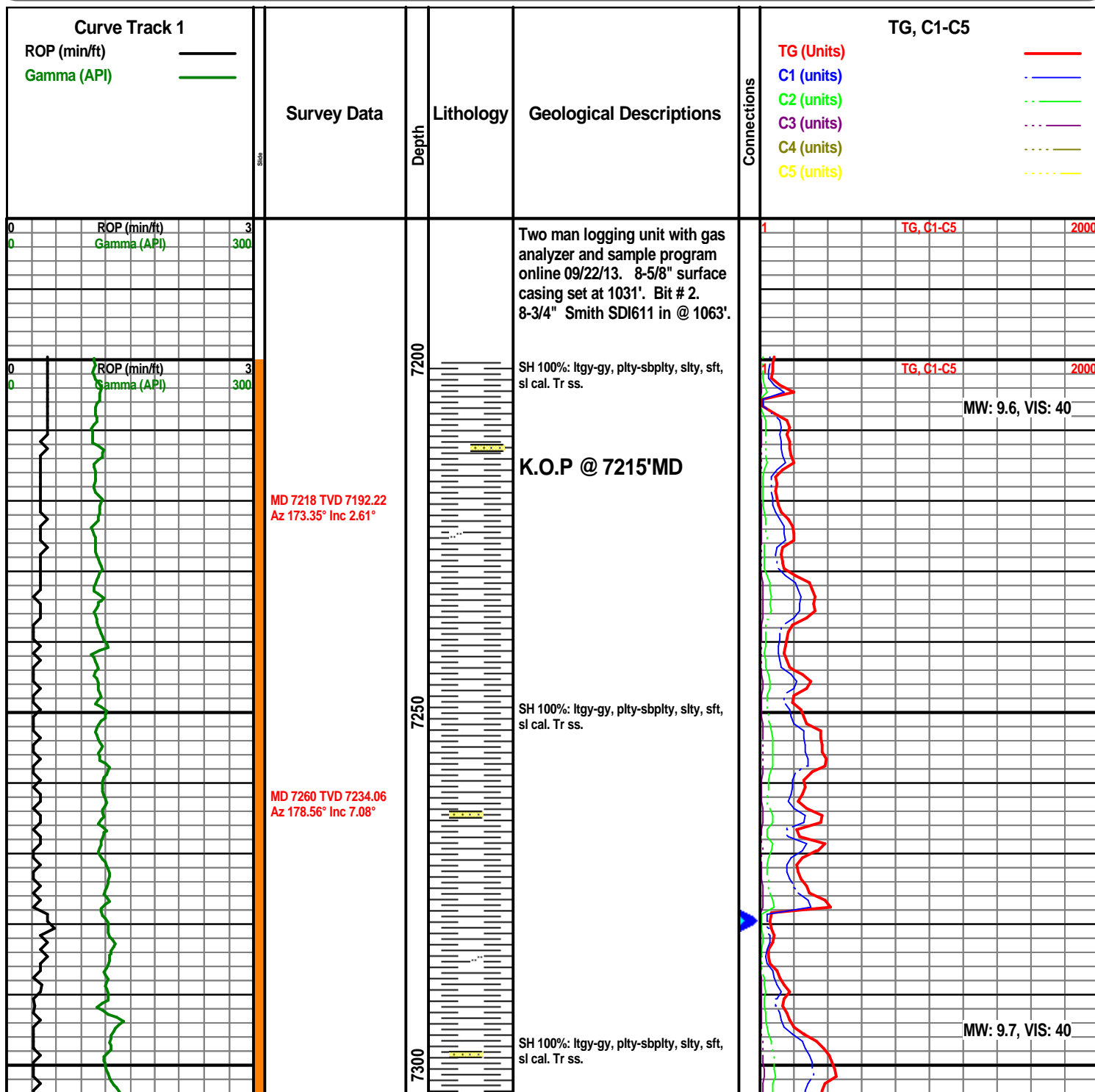
## STRINGER

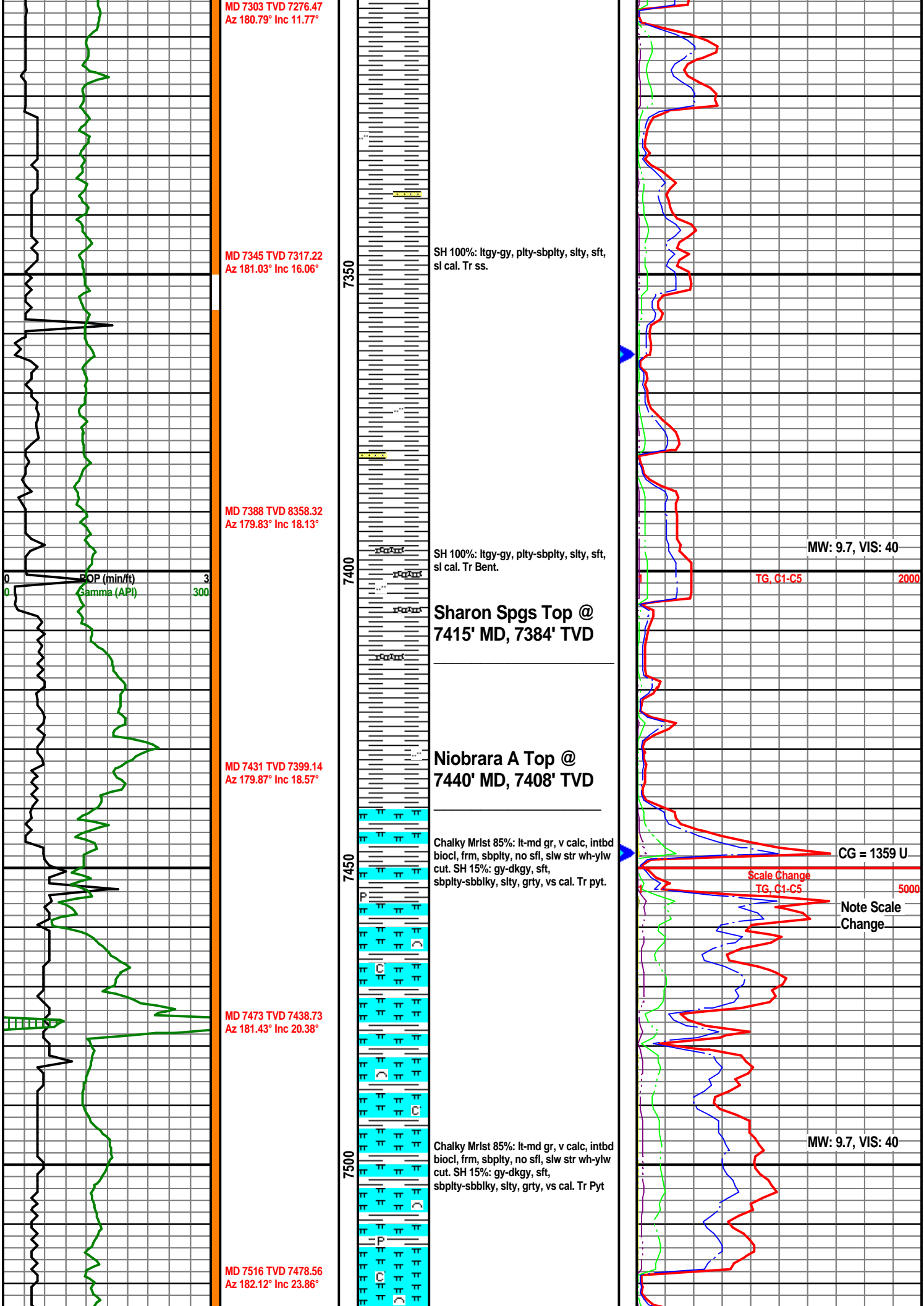
Anhy  
Arg  
Bent  
Coal  
Dol  
Gyp  
Ls  
Mrst

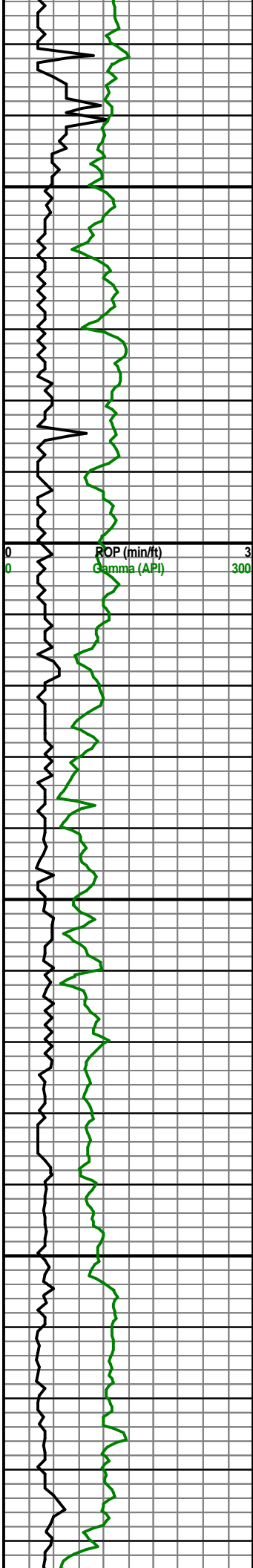
Sltstrg  
Ssstrg

## TEXTURE

Boundst  
Chalky  
Cryxln  
Earthy  
Finexln  
Grainst  
Lithogr  
Microxln  
Mudst  
Packst  
Wackest







MD 7558 TVD 7516.25  
Az 181.31° Inc 28.45°

MD 7601 TVD 7553.15  
Az 179.05° Inc 33.28°

MD 7686 TVD 7619.75  
Az 179.88° Inc 42.97°

MD 7729 TVD 7649.76  
Az 181.29° Inc 48.46°



Chalky Mrlst 85%: lt-md gr, v calc, intbd  
biocl, frm, sbpity, no sfl, slw str wh-ylw  
cut. SH 15%: gy-dkgy, sft,  
sbpity-sbbilky, silty, grty, vs cal. Tr Pyt

Chalky Mrlst 85%: lt-md gr, v calc, intbd  
biocl, frm, sbpity, no sfl, slw str wh-ylw  
cut. SH 15%: gy-dkgy, sft,  
sbpity-sbbilky, silty, grty, vs cal. Tr Pyt

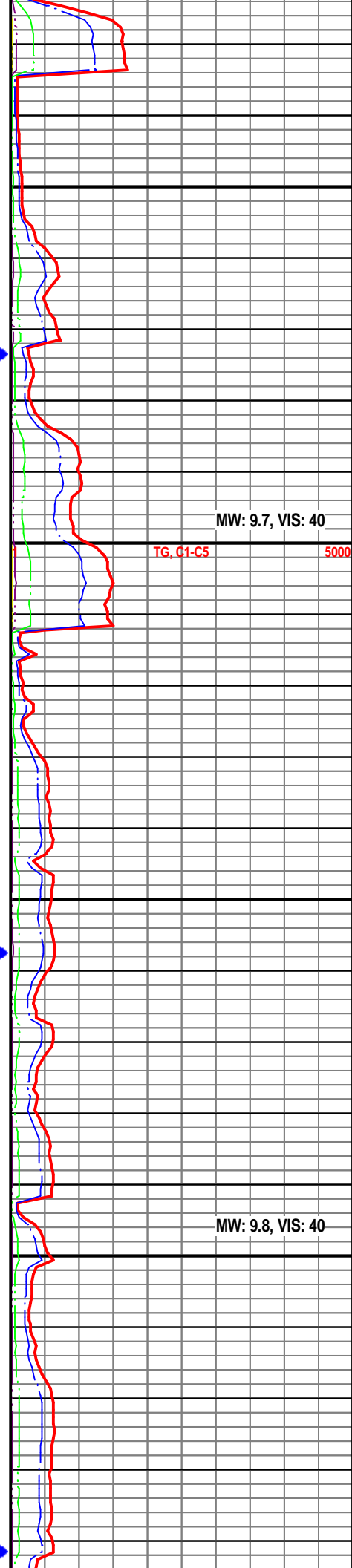
Niobrara B Top @  
7632' MD, 7578' TVD

09/24/13 4:30am Depth @ 7637'MD

Chalky Mrlst 90%: lt-md gr, v calc, intbd  
biocl, frm, sbpity, no sfl, slw str wh-ylw  
cut. SH 10%: gy-dkgy, sft,  
sbpity-sbbilky, silty, grty, vs cal.

Chalky Mrlst 90%: lt-md gr, v calc, intbd  
biocl, frm, sbpity, no sfl, slw str wh-ylw  
cut. SH 10%: gy-dkgy, sft,  
sbpity-sbbilky, silty, grty, vs cal.

Niobrara C Top @  
7742' MD, 7658' TVD



MW: 9.7, VIS: 40

TG, C1-C5

5000

MW: 9.8, VIS: 40

