

1801 Broadway
Suite 500
Denver, Colorado 80202



Shannon Hartnett
Regulatory Compliance Specialist
Tel: 303.398.0351
E-mail: shartnett@gwogco.com

November 21, 2013

Colorado Oil and Gas Conservation Commission
1120 Lincoln Street, Suite 801
Denver, Colorado 80203

RE: **Proposed Wellbore Spacing Unit**
Bruegman EG 34-024HN

Codell New Drill
Township 7 North, Range 64 West, 6th P.M.
Section 34
Weld County, Colorado

Dear Director:

Great Western Operating Company, LLC is planning to drill the above captioned well in accordance with the provisions of COGCC Rule 318(l)e(2).

Great Western proposed wellbore spacing unit consists of:

- **W½ Sec. 34-T7N-R64W**

The 30 day notification time has passed and we have not received any objections to such well locations or proposed spacing unit, therefore Great Western hereby requests the Director to approve the above mentioned well. Great Western Operating Company, LLC respectfully requests that the COGCC review the enclosed map illustrating the proposed wellbore spacing unit.

Respectfully,



Shannon Hartnett
Regulatory Compliance Specialist
Great Western Operating Company, LLC

1894, Alum. Cop,
#12574
0.6' Below Ground,
Lot 40.57025"
Long 104.526736
(eas.)

Well location, BRUEGMAN SOUTH EG 34-024HN, located as shown in the SW 1/4 SW 1/4 of Section 34, T7N, R64W, 6th P.M., Weld County, Colorado.

BASIS OF ELEVATION

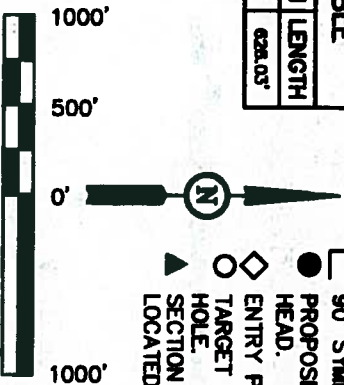
USGS COOPERATIVE BASE NETWORK CONTROL STATION,
DESIGNATION 'M414'. NGS DATA SHEET LISTS THE
NAVD 88 ELEVATION AS BEING 4600.58 FEET

BASIS OF BEARINGS

BASIS OF BEARINGS IS A G.P.S. OBSERVATION.

LEGEND:

- 90° SYMBOL
- PROPOSED WELL HEAD.
- ◇ ENTRY POINT
- TARGET BOTTOM HOLE.
- ▲ SECTION CORNERS LOCATED.



SCALE

THIS IS TO CERTIFY THAT THE ABOVE AND THE PRESENTED FROM FIELD NOTES OF ACTUAL SURVEY WORK OF ME OR UNDER MY SUPERVISION AND THAT THE SAME ARE TRUE AND CORRECT TO THE BEST OF MY KNOWLEDGE AND BELIEF.



REMSD: 10-22-13
REMSD: 10-03-13

UNITAB ENGINEERING & LAND SURVEYING

(435) 788-1017

34

DATE SURVEYED:	DATE DRAWN:
----------------	-------------

17

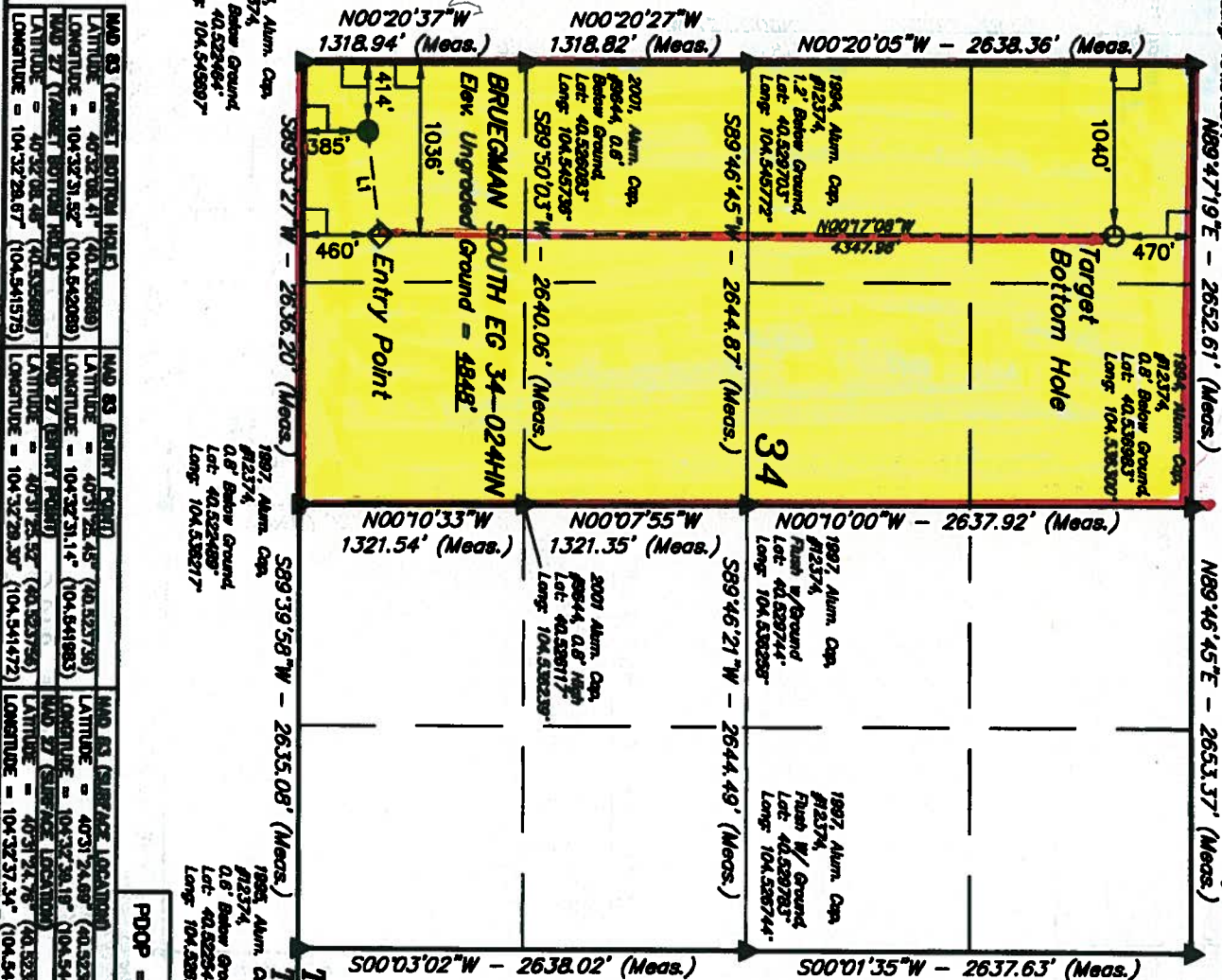
D.S. K.H. J.W.

G.L.O. PLAT

WEATHER

COOL

FILE
GREAT WESTERN OIL
& GAS COMPANY



MAD 83 (WAGNET BOUNDRY POINT)		MAD 83 (ENTRY POINT)		MAD 83 (SURFACE LOCATION)	
LATITUDE = 40.32.08.41 ⁺	(40.535888)	LATITUDE = 40.32.21.45 ⁺	(40.535738)	LATITUDE = 40.31.24.68 ⁺	(40.525025)
LONGITUDE = 104.32.51.52 ⁺	(104.542008)	LONGITUDE = 104.32.51.14 ⁺	(104.541985)	LONGITUDE = 104.32.28.18 ⁺	(104.544418)
MAD 27 (WAGNET BOUNDRY POINT)		MAD 27 (ENTRY POINT)		MAD 27 (SURFACE LOCATION)	
LATITUDE = 40.32.08.48 ⁺	(40.535889)	LATITUDE = 40.31.25.52 ⁺	(40.535788)	LATITUDE = 40.31.24.76 ⁺	(40.533544)
LONGITUDE = 104.32.28.67 ⁺	(104.541575)	LONGITUDE = 104.32.28.30 ⁺	(104.541472)	LONGITUDE = 104.32.57.34 ⁺	(104.543708)