

Great Western

Well Name: **Postle IC 11-302HN**

Surface Location: Postle East Pad Sec.12-T3N-R68W

North American Datum 1983 , US State Plane 1983 , Colorado Northern Zone

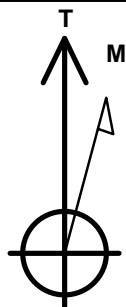
Ground Elevation: 4925.1

+N/-S	+E/-W	Northing	Easting	Latitude	Longitude	Slot
0.0	0.0	1328891.06	3150763.06	40.234944	-104.959992	

RKB - 16.5' WELL @ 4941.6ft (RKB - 16.5')

WELLBORE TARGET DETAILS

Name	TVD	+N/-S	+E/-W	Shape
SHL 528'FSL & 250'FWL, Sec.12	1.0	0.0	0.0	Point
BHL 1090'FSL & 470'FWL, Sec.11	7100.7	555.4	-5043.4	Point
Entry Pt. 1092'FSL & 460'FEL, Sec.11	7100.7	560.7	-707.2	Point



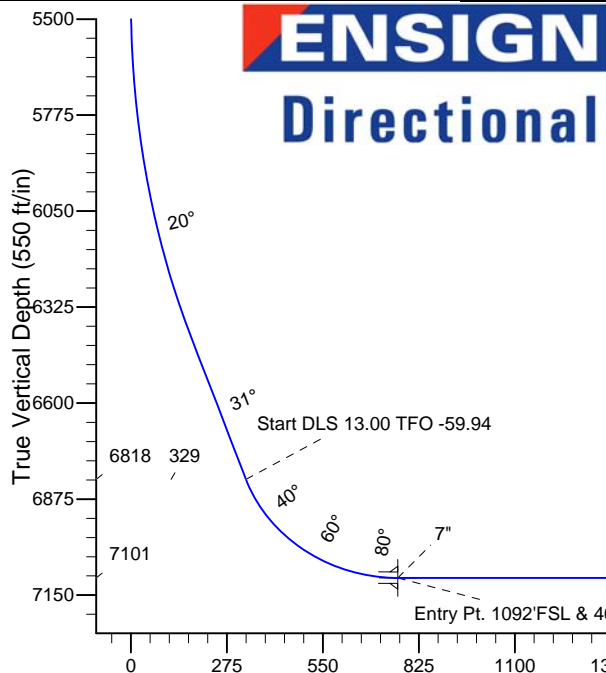
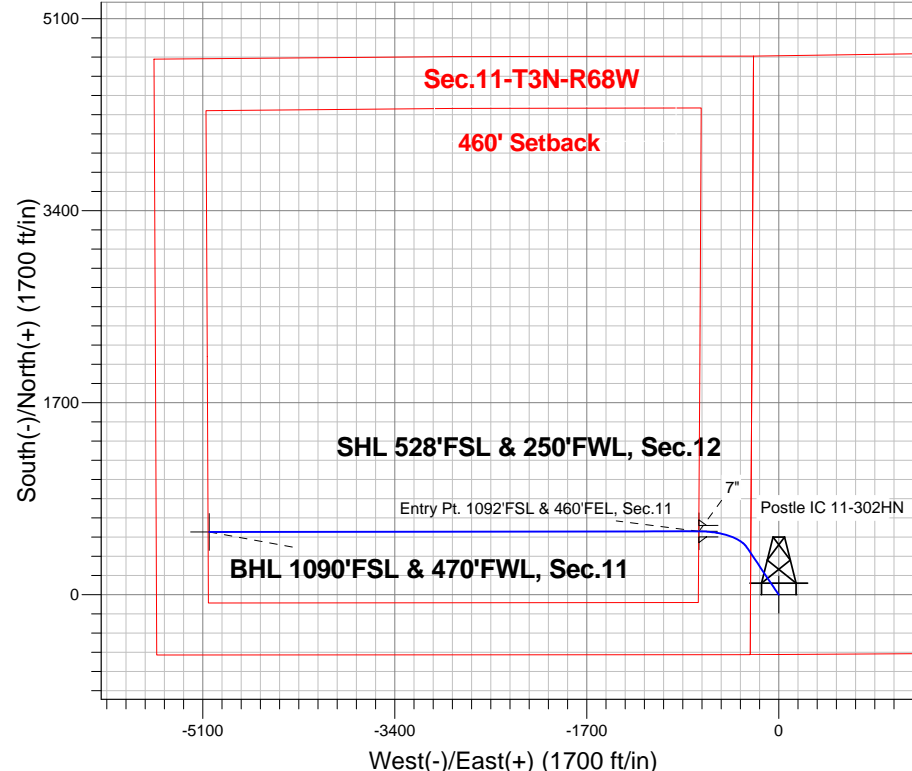
Azimuths to True North
Magnetic North: 8.64°

Magnetic Field
Strength: 52774.8snT
Dip Angle: 66.80°
Date: 10/23/2013
Model: IGRF2010

Postle East Pad Sec.12-T3N-R68W
Postle IC 11-302HN
Plan #1 (10-23-13)
12:33, October 24 2013

ANNOTATIONS

TVD	MD	Annotation
5450.0	5450.0	KOP - Start Build 3.07
6818.4	6933.6	Start DLS 13.00 TFO -59.94
7100.7	11834.4	TD at 11834.4



ENSIGN
Directional

SECTION DETAILS

Sec	MD	Inc	Azi	TVD	+N/-S	+E/-W	DLeg	TFace	VSec	Target
1	0.0	0.00	0.00	0.0	0.0	0.0	0.00	0.00	0.0	
2	5450.0	0.00	0.00	5450.0	0.0	0.0	0.00	0.00	0.0	
3	6452.7	30.77	325.98	6405.2	217.8	-147.1	3.07	325.98	170.0	
4	6933.6	30.77	325.98	6818.5	421.7	-284.7	0.00	0.00	329.1	
5	7498.2	90.00	269.94	7100.7	560.7	-707.2	13.00	-59.94	764.3	Entry Pt. 1092'FSL & 460'FEL, Sec.11
6	7499.3	90.00	269.93	7100.7	560.7	-708.2	1.00	-90.00	765.3	
7	11834.4	90.00	269.93	7100.7	555.4	-5043.4	0.00	0.00	5073.9	BHL 1090'FSL & 470'FWL, Sec.11

BHL 1090'FSL & 470'FWL, Sec.11

TD at 11834.4

Vertical Section at 276.28° (550 ft/in)



Great Western

Sec.12-T3N-R68W

Postle East Pad Sec.12-T3N-R68W

Postle IC 11-302HN

Wellbore #1

Plan: Plan #1 (10-23-13)

Standard Planning Report

24 October, 2013

Plan Sections										
Measured Depth (ft)	Inclination (°)	Azimuth (°)	Vertical Depth (ft)	+N/-S (ft)	+E/-W (ft)	Dogleg Rate (°/100ft)	Build Rate (°/100ft)	Turn Rate (°/100ft)	TFO (°)	Target
0.0	0.00	0.00	0.0	0.0	0.0	0.00	0.00	0.00	0.00	
5,450.0	0.00	0.00	5,450.0	0.0	0.0	0.00	0.00	0.00	0.00	
6,452.7	30.77	325.98	6,405.2	217.8	-147.1	3.07	3.07	0.00	325.98	
6,933.6	30.77	325.98	6,818.5	421.7	-284.7	0.00	0.00	0.00	0.00	
7,498.2	90.00	269.94	7,100.7	560.7	-707.2	13.00	10.49	-9.93	-59.94	Entry Pt. 1092'FSL
7,499.3	90.00	269.93	7,100.7	560.7	-708.2	1.00	0.00	-1.00	-90.00	
11,834.4	90.00	269.93	7,100.7	555.4	-5,043.4	0.00	0.00	0.00	0.00	BHL 1090'FSL & 47

Database:	Landmark	Local Co-ordinate Reference:	Well Postle IC 11-302HN
Company:	Great Western	TVD Reference:	WELL @ 4941.6ft (RKB - 16.5')
Project:	Sec.12-T3N-R68W	MD Reference:	WELL @ 4941.6ft (RKB - 16.5')
Site:	Postle East Pad Sec.12-T3N-R68W	North Reference:	True
Well:	Postle IC 11-302HN	Survey Calculation Method:	Minimum Curvature
Wellbore:	Wellbore #1		
Design:	Plan #1 (10-23-13)		

Planned Survey									
Measured Depth (ft)	Inclination (°)	Azimuth (°)	Vertical Depth (ft)	+N/-S (ft)	+E/-W (ft)	Vertical Section (ft)	Dogleg Rate (°/100ft)	Build Rate (°/100ft)	Turn Rate (°/100ft)
0.0	0.00	0.00	0.0	0.0	0.0	0.0	0.00	0.00	0.00
1.0	0.00	0.00	1.0	0.0	0.0	0.0	0.00	0.00	0.00
SHL 528'FSL & 250'FWL, Sec.12									
100.0	0.00	0.00	100.0	0.0	0.0	0.0	0.00	0.00	0.00
200.0	0.00	0.00	200.0	0.0	0.0	0.0	0.00	0.00	0.00
300.0	0.00	0.00	300.0	0.0	0.0	0.0	0.00	0.00	0.00
400.0	0.00	0.00	400.0	0.0	0.0	0.0	0.00	0.00	0.00
500.0	0.00	0.00	500.0	0.0	0.0	0.0	0.00	0.00	0.00
600.0	0.00	0.00	600.0	0.0	0.0	0.0	0.00	0.00	0.00
700.0	0.00	0.00	700.0	0.0	0.0	0.0	0.00	0.00	0.00
800.0	0.00	0.00	800.0	0.0	0.0	0.0	0.00	0.00	0.00
900.0	0.00	0.00	900.0	0.0	0.0	0.0	0.00	0.00	0.00
1,000.0	0.00	0.00	1,000.0	0.0	0.0	0.0	0.00	0.00	0.00
1,100.0	0.00	0.00	1,100.0	0.0	0.0	0.0	0.00	0.00	0.00
1,200.0	0.00	0.00	1,200.0	0.0	0.0	0.0	0.00	0.00	0.00
1,300.0	0.00	0.00	1,300.0	0.0	0.0	0.0	0.00	0.00	0.00
1,400.0	0.00	0.00	1,400.0	0.0	0.0	0.0	0.00	0.00	0.00
1,500.0	0.00	0.00	1,500.0	0.0	0.0	0.0	0.00	0.00	0.00
1,600.0	0.00	0.00	1,600.0	0.0	0.0	0.0	0.00	0.00	0.00
1,700.0	0.00	0.00	1,700.0	0.0	0.0	0.0	0.00	0.00	0.00
1,800.0	0.00	0.00	1,800.0	0.0	0.0	0.0	0.00	0.00	0.00
1,900.0	0.00	0.00	1,900.0	0.0	0.0	0.0	0.00	0.00	0.00
2,000.0	0.00	0.00	2,000.0	0.0	0.0	0.0	0.00	0.00	0.00
2,100.0	0.00	0.00	2,100.0	0.0	0.0	0.0	0.00	0.00	0.00
2,200.0	0.00	0.00	2,200.0	0.0	0.0	0.0	0.00	0.00	0.00
2,300.0	0.00	0.00	2,300.0	0.0	0.0	0.0	0.00	0.00	0.00
2,400.0	0.00	0.00	2,400.0	0.0	0.0	0.0	0.00	0.00	0.00
2,500.0	0.00	0.00	2,500.0	0.0	0.0	0.0	0.00	0.00	0.00
2,600.0	0.00	0.00	2,600.0	0.0	0.0	0.0	0.00	0.00	0.00
2,700.0	0.00	0.00	2,700.0	0.0	0.0	0.0	0.00	0.00	0.00
2,800.0	0.00	0.00	2,800.0	0.0	0.0	0.0	0.00	0.00	0.00
2,900.0	0.00	0.00	2,900.0	0.0	0.0	0.0	0.00	0.00	0.00
3,000.0	0.00	0.00	3,000.0	0.0	0.0	0.0	0.00	0.00	0.00
3,100.0	0.00	0.00	3,100.0	0.0	0.0	0.0	0.00	0.00	0.00
3,200.0	0.00	0.00	3,200.0	0.0	0.0	0.0	0.00	0.00	0.00
3,300.0	0.00	0.00	3,300.0	0.0	0.0	0.0	0.00	0.00	0.00
3,400.0	0.00	0.00	3,400.0	0.0	0.0	0.0	0.00	0.00	0.00
3,500.0	0.00	0.00	3,500.0	0.0	0.0	0.0	0.00	0.00	0.00
3,600.0	0.00	0.00	3,600.0	0.0	0.0	0.0	0.00	0.00	0.00
3,700.0	0.00	0.00	3,700.0	0.0	0.0	0.0	0.00	0.00	0.00
3,800.0	0.00	0.00	3,800.0	0.0	0.0	0.0	0.00	0.00	0.00
3,900.0	0.00	0.00	3,900.0	0.0	0.0	0.0	0.00	0.00	0.00
4,000.0	0.00	0.00	4,000.0	0.0	0.0	0.0	0.00	0.00	0.00
4,100.0	0.00	0.00	4,100.0	0.0	0.0	0.0	0.00	0.00	0.00
4,200.0	0.00	0.00	4,200.0	0.0	0.0	0.0	0.00	0.00	0.00
4,300.0	0.00	0.00	4,300.0	0.0	0.0	0.0	0.00	0.00	0.00
4,400.0	0.00	0.00	4,400.0	0.0	0.0	0.0	0.00	0.00	0.00
4,500.0	0.00	0.00	4,500.0	0.0	0.0	0.0	0.00	0.00	0.00
4,600.0	0.00	0.00	4,600.0	0.0	0.0	0.0	0.00	0.00	0.00
4,700.0	0.00	0.00	4,700.0	0.0	0.0	0.0	0.00	0.00	0.00
4,800.0	0.00	0.00	4,800.0	0.0	0.0	0.0	0.00	0.00	0.00
4,900.0	0.00	0.00	4,900.0	0.0	0.0	0.0	0.00	0.00	0.00
5,000.0	0.00	0.00	5,000.0	0.0	0.0	0.0	0.00	0.00	0.00
5,100.0	0.00	0.00	5,100.0	0.0	0.0	0.0	0.00	0.00	0.00

Database:	Landmark	Local Co-ordinate Reference:	Well Postle IC 11-302HN
Company:	Great Western	TVD Reference:	WELL @ 4941.6ft (RKB - 16.5')
Project:	Sec.12-T3N-R68W	MD Reference:	WELL @ 4941.6ft (RKB - 16.5')
Site:	Postle East Pad Sec.12-T3N-R68W	North Reference:	True
Well:	Postle IC 11-302HN	Survey Calculation Method:	Minimum Curvature
Wellbore:	Wellbore #1		
Design:	Plan #1 (10-23-13)		

Planned Survey									
Measured Depth (ft)	Inclination (°)	Azimuth (°)	Vertical Depth (ft)	+N/-S (ft)	+E/-W (ft)	Vertical Section (ft)	Dogleg Rate (°/100ft)	Build Rate (°/100ft)	Turn Rate (°/100ft)
5,200.0	0.00	0.00	5,200.0	0.0	0.0	0.0	0.00	0.00	0.00
5,300.0	0.00	0.00	5,300.0	0.0	0.0	0.0	0.00	0.00	0.00
5,400.0	0.00	0.00	5,400.0	0.0	0.0	0.0	0.00	0.00	0.00
5,450.0	0.00	0.00	5,450.0	0.0	0.0	0.0	0.00	0.00	0.00
KOP - Start Build 3.07									
5,500.0	1.53	325.98	5,500.0	0.6	-0.4	0.4	3.07	3.07	0.00
5,600.0	4.60	325.98	5,599.8	5.0	-3.4	3.9	3.07	3.07	0.00
5,700.0	7.67	325.98	5,699.3	13.9	-9.3	10.8	3.07	3.07	0.00
5,800.0	10.74	325.98	5,798.0	27.1	-18.3	21.2	3.07	3.07	0.00
5,900.0	13.81	325.98	5,895.7	44.7	-30.2	34.9	3.07	3.07	0.00
6,000.0	16.88	325.98	5,992.1	66.7	-45.0	52.0	3.07	3.07	0.00
6,100.0	19.94	325.98	6,087.0	92.8	-62.7	72.4	3.07	3.07	0.00
6,200.0	23.01	325.98	6,180.0	123.2	-83.1	96.1	3.07	3.07	0.00
6,300.0	26.08	325.98	6,270.9	157.6	-106.4	123.0	3.07	3.07	0.00
6,400.0	29.15	325.98	6,359.5	196.0	-132.3	153.0	3.07	3.07	0.00
6,452.7	30.77	325.98	6,405.2	217.8	-147.1	170.0	3.07	3.07	0.00
6,500.0	30.77	325.98	6,445.8	237.9	-160.6	185.7	0.00	0.00	0.00
6,600.0	30.77	325.98	6,531.8	280.3	-189.2	218.7	0.00	0.00	0.00
6,700.0	30.77	325.98	6,617.7	322.7	-217.8	251.8	0.00	0.00	0.00
6,800.0	30.77	325.98	6,703.6	365.1	-246.4	284.9	0.00	0.00	0.00
6,900.0	30.77	325.98	6,789.5	407.5	-275.1	318.0	0.00	0.00	0.00
6,933.6	30.77	325.98	6,818.4	421.7	-284.7	329.1	0.00	0.00	0.00
Start DLS 13.00 TFO -59.94									
7,000.0	35.80	313.16	6,874.0	449.1	-308.4	355.7	12.99	7.57	-19.31
7,100.0	45.22	299.28	6,950.1	486.7	-360.9	412.0	13.00	9.43	-13.88
7,200.0	55.84	289.52	7,013.6	518.0	-431.2	485.3	13.00	10.62	-9.76
7,300.0	67.06	282.01	7,061.4	541.5	-515.6	571.7	13.00	11.21	-7.51
7,400.0	78.57	275.67	7,090.9	556.0	-609.8	667.0	13.00	11.51	-6.34
7,498.2	90.00	269.94	7,100.7	560.7	-707.2	764.3	13.00	11.63	-5.83
7" - Entry Pt. 1092°FSL & 460°FEL, Sec.11									
7,499.3	90.00	269.93	7,100.7	560.7	-708.2	765.3	1.14	0.24	-1.12
7,500.0	90.00	269.93	7,100.7	560.7	-709.0	766.1	0.00	0.00	0.00
7,600.0	90.00	269.93	7,100.7	560.6	-809.0	865.5	0.00	0.00	0.00
7,700.0	90.00	269.93	7,100.7	560.4	-909.0	964.9	0.00	0.00	0.00
7,800.0	90.00	269.93	7,100.7	560.3	-1,009.0	1,064.2	0.00	0.00	0.00
7,900.0	90.00	269.93	7,100.7	560.2	-1,109.0	1,163.6	0.00	0.00	0.00
8,000.0	90.00	269.93	7,100.7	560.1	-1,209.0	1,263.0	0.00	0.00	0.00
8,100.0	90.00	269.93	7,100.7	559.9	-1,309.0	1,362.4	0.00	0.00	0.00
8,200.0	90.00	269.93	7,100.7	559.8	-1,409.0	1,461.8	0.00	0.00	0.00
8,300.0	90.00	269.93	7,100.7	559.7	-1,509.0	1,561.2	0.00	0.00	0.00
8,400.0	90.00	269.93	7,100.7	559.6	-1,609.0	1,660.6	0.00	0.00	0.00
8,500.0	90.00	269.93	7,100.7	559.4	-1,709.0	1,759.9	0.00	0.00	0.00
8,600.0	90.00	269.93	7,100.7	559.3	-1,809.0	1,859.3	0.00	0.00	0.00
8,700.0	90.00	269.93	7,100.7	559.2	-1,909.0	1,958.7	0.00	0.00	0.00
8,800.0	90.00	269.93	7,100.7	559.1	-2,009.0	2,058.1	0.00	0.00	0.00
8,900.0	90.00	269.93	7,100.7	559.0	-2,109.0	2,157.5	0.00	0.00	0.00
9,000.0	90.00	269.93	7,100.7	558.8	-2,209.0	2,256.9	0.00	0.00	0.00
9,100.0	90.00	269.93	7,100.7	558.7	-2,309.0	2,356.3	0.00	0.00	0.00
9,200.0	90.00	269.93	7,100.7	558.6	-2,409.0	2,455.6	0.00	0.00	0.00
9,300.0	90.00	269.93	7,100.7	558.5	-2,509.0	2,555.0	0.00	0.00	0.00
9,400.0	90.00	269.93	7,100.7	558.3	-2,609.0	2,654.4	0.00	0.00	0.00
9,500.0	90.00	269.93	7,100.7	558.2	-2,709.0	2,753.8	0.00	0.00	0.00
9,600.0	90.00	269.93	7,100.7	558.1	-2,809.0	2,853.2	0.00	0.00	0.00

Database:	Landmark	Local Co-ordinate Reference:	Well Postle IC 11-302HN
Company:	Great Western	TVD Reference:	WELL @ 4941.6ft (RKB - 16.5')
Project:	Sec.12-T3N-R68W	MD Reference:	WELL @ 4941.6ft (RKB - 16.5')
Site:	Postle East Pad Sec.12-T3N-R68W	North Reference:	True
Well:	Postle IC 11-302HN	Survey Calculation Method:	Minimum Curvature
Wellbore:	Wellbore #1		
Design:	Plan #1 (10-23-13)		

Planned Survey										
Measured Depth (ft)	Inclination (°)	Azimuth (°)	Vertical Depth (ft)	+N/-S (ft)	+E/-W (ft)	Vertical Section (ft)	Dogleg Rate (°/100ft)	Build Rate (°/100ft)	Turn Rate (°/100ft)	
9,700.0	90.00	269.93	7,100.7	558.0	-2,909.0	2,952.6	0.00	0.00	0.00	
9,800.0	90.00	269.93	7,100.7	557.9	-3,009.0	3,052.0	0.00	0.00	0.00	
9,900.0	90.00	269.93	7,100.7	557.7	-3,109.0	3,151.3	0.00	0.00	0.00	
10,000.0	90.00	269.93	7,100.7	557.6	-3,209.0	3,250.7	0.00	0.00	0.00	
10,100.0	90.00	269.93	7,100.7	557.5	-3,309.0	3,350.1	0.00	0.00	0.00	
10,200.0	90.00	269.93	7,100.7	557.4	-3,409.0	3,449.5	0.00	0.00	0.00	
10,300.0	90.00	269.93	7,100.7	557.2	-3,509.0	3,548.9	0.00	0.00	0.00	
10,400.0	90.00	269.93	7,100.7	557.1	-3,609.0	3,648.3	0.00	0.00	0.00	
10,500.0	90.00	269.93	7,100.7	557.0	-3,709.0	3,747.7	0.00	0.00	0.00	
10,600.0	90.00	269.93	7,100.7	556.9	-3,809.0	3,847.0	0.00	0.00	0.00	
10,700.0	90.00	269.93	7,100.7	556.7	-3,909.0	3,946.4	0.00	0.00	0.00	
10,800.0	90.00	269.93	7,100.7	556.6	-4,009.0	4,045.8	0.00	0.00	0.00	
10,900.0	90.00	269.93	7,100.7	556.5	-4,109.0	4,145.2	0.00	0.00	0.00	
11,000.0	90.00	269.93	7,100.7	556.4	-4,209.0	4,244.6	0.00	0.00	0.00	
11,100.0	90.00	269.93	7,100.7	556.3	-4,309.0	4,344.0	0.00	0.00	0.00	
11,200.0	90.00	269.93	7,100.7	556.1	-4,409.0	4,443.4	0.00	0.00	0.00	
11,300.0	90.00	269.93	7,100.7	556.0	-4,509.0	4,542.7	0.00	0.00	0.00	
11,400.0	90.00	269.93	7,100.7	555.9	-4,609.0	4,642.1	0.00	0.00	0.00	
11,500.0	90.00	269.93	7,100.7	555.8	-4,709.0	4,741.5	0.00	0.00	0.00	
11,600.0	90.00	269.93	7,100.7	555.6	-4,809.0	4,840.9	0.00	0.00	0.00	
11,700.0	90.00	269.93	7,100.7	555.5	-4,909.0	4,940.3	0.00	0.00	0.00	
11,800.0	90.00	269.93	7,100.7	555.4	-5,009.0	5,039.7	0.00	0.00	0.00	
11,834.4	90.00	269.93	7,100.7	555.4	-5,043.4	5,073.9	0.00	0.00	0.00	
BHL 1090'FSL & 470'FWL, Sec.11										

Casing Points					
Measured Depth (ft)	Vertical Depth (ft)	Name	Casing Diameter (")	Hole Diameter (")	
7,498.2	7,100.7	7"	7	7-1/2	

Plan Annotations					
Measured Depth (ft)	Vertical Depth (ft)	Local Coordinates		Comment	
		+N/-S (ft)	+E/-W (ft)		
5,450.0	5,450.0	0.0	0.0	KOP - Start Build 3.07	
6,933.6	6,818.4	421.7	-284.7	Start DLS 13.00 TFO -59.94	
11,834.4	7,100.7	555.4	-5,043.4	TD at 11834.4	



Great Western

Sec.12-T3N-R68W

Postle East Pad Sec.12-T3N-R68W

Postle IC 11-302HN

Wellbore #1

Plan #1 (10-23-13)

Anticollision Report

24 October, 2013

Company:	Great Western	Local Co-ordinate Reference:	Well Postle IC 11-302HN
Project:	Sec.12-T3N-R68W	TVD Reference:	WELL @ 4941.6ft (RKB - 16.5')
Reference Site:	Postle East Pad Sec.12-T3N-R68W	MD Reference:	WELL @ 4941.6ft (RKB - 16.5')
Site Error:	0.0ft	North Reference:	True
Reference Well:	Postle IC 11-302HN	Survey Calculation Method:	Minimum Curvature
Well Error:	0.0ft	Output errors are at	2.00 sigma
Reference Wellbore	Wellbore #1	Database:	Landmark
Reference Design:	Plan #1 (10-23-13)	Offset TVD Reference:	Offset Datum

Offset Design Postle East Pad Sec.12-T3N-R68W - Postle IC 11-342HC - Wellbore #1 - Plan #1 (10-23-13)													Offset Site Error:	0.0 ft
Survey Program: 0-NS-GYRO-MS, 7355-MWD													Offset Well Error:	0.0 ft
Reference		Offset		Semi Major Axis			Distance							Warning
Measured Depth (ft)	Vertical Depth (ft)	Measured Depth (ft)	Vertical Depth (ft)	Reference (ft)	Offset (ft)	Highside Toolface (°)	Offset Wellbore Centre +N/-S (ft)	+E/-W (ft)	Between Centres (ft)	Between Ellipses (ft)	Minimum Separation (ft)	Separation Factor		
1,800.0	1,800.0	1,800.0	1,800.0	4.6	4.6	-180.00	-30.2	0.0	30.2	20.9	9.29	3.255		
1,900.0	1,900.0	1,900.0	1,900.0	4.9	4.9	-180.00	-30.2	0.0	30.2	20.4	9.82	3.079		
2,000.0	2,000.0	2,000.0	2,000.0	5.2	5.2	-180.00	-30.2	0.0	30.2	19.9	10.35	2.921		
2,100.0	2,100.0	2,100.0	2,100.0	5.4	5.4	-180.00	-30.2	0.0	30.2	19.4	10.88	2.778		
2,200.0	2,200.0	2,200.0	2,200.0	5.7	5.7	-180.00	-30.2	0.0	30.2	18.8	11.41	2.649		
2,300.0	2,300.0	2,300.0	2,300.0	6.0	6.0	-180.00	-30.2	0.0	30.2	18.3	11.95	2.531		
2,400.0	2,400.0	2,400.0	2,400.0	6.2	6.2	-180.00	-30.2	0.0	30.2	17.8	12.48	2.424		
2,500.0	2,500.0	2,500.0	2,500.0	6.5	6.5	-180.00	-30.2	0.0	30.2	17.2	13.01	2.325		
2,600.0	2,600.0	2,600.0	2,600.0	6.8	6.8	-180.00	-30.2	0.0	30.2	16.7	13.54	2.234		
2,700.0	2,700.0	2,700.0	2,700.0	7.0	7.0	-180.00	-30.2	0.0	30.2	16.2	14.07	2.149		
2,800.0	2,800.0	2,800.0	2,800.0	7.3	7.3	-180.00	-30.2	0.0	30.2	15.6	14.60	2.071		
2,900.0	2,900.0	2,900.0	2,900.0	7.6	7.6	-180.00	-30.2	0.0	30.2	15.1	15.13	1.998		
3,000.0	3,000.0	3,000.0	3,000.0	7.8	7.8	-180.00	-30.2	0.0	30.2	14.6	15.66	1.931		
3,100.0	3,100.0	3,100.0	3,100.0	8.1	8.1	-180.00	-30.2	0.0	30.2	14.0	16.19	1.867		
3,200.0	3,200.0	3,200.0	3,200.0	8.4	8.4	-180.00	-30.2	0.0	30.2	13.5	16.72	1.808		
3,300.0	3,300.0	3,300.0	3,300.0	8.6	8.6	-180.00	-30.2	0.0	30.2	13.0	17.25	1.752		
3,400.0	3,400.0	3,400.0	3,400.0	8.9	8.9	-180.00	-30.2	0.0	30.2	12.5	17.78	1.700		
3,500.0	3,500.0	3,500.0	3,500.0	9.2	9.2	-180.00	-30.2	0.0	30.2	11.9	18.32	1.651		
3,600.0	3,600.0	3,600.0	3,600.0	9.4	9.4	-180.00	-30.2	0.0	30.2	11.4	18.85	1.604		
3,700.0	3,700.0	3,700.0	3,700.0	9.7	9.7	-180.00	-30.2	0.0	30.2	10.9	19.38	1.560		
3,800.0	3,800.0	3,800.0	3,800.0	10.0	10.0	-180.00	-30.2	0.0	30.2	10.3	19.91	1.519		
3,900.0	3,900.0	3,900.0	3,900.0	10.2	10.2	-180.00	-30.2	0.0	30.2	9.8	20.44	1.479 Level 3		
4,000.0	4,000.0	4,000.0	4,000.0	10.5	10.5	-180.00	-30.2	0.0	30.2	9.3	20.97	1.442 Level 3		
4,100.0	4,100.0	4,100.0	4,100.0	10.8	10.8	-180.00	-30.2	0.0	30.2	8.7	21.50	1.406 Level 3		
4,200.0	4,200.0	4,200.0	4,200.0	11.0	11.0	-180.00	-30.2	0.0	30.2	8.2	22.03	1.372 Level 3		
4,300.0	4,300.0	4,300.0	4,300.0	11.3	11.3	-180.00	-30.2	0.0	30.2	7.7	22.56	1.340 Level 3		
4,400.0	4,400.0	4,400.0	4,400.0	11.5	11.5	-180.00	-30.2	0.0	30.2	7.1	23.09	1.309 Level 3		
4,500.0	4,500.0	4,500.0	4,500.0	11.8	11.8	-180.00	-30.2	0.0	30.2	6.6	23.62	1.280 Level 3		
4,600.0	4,600.0	4,600.0	4,600.0	12.1	12.1	-180.00	-30.2	0.0	30.2	6.1	24.16	1.252 Level 3		
4,700.0	4,700.0	4,700.0	4,700.0	12.3	12.3	-180.00	-30.2	0.0	30.2	5.6	24.69	1.225 Level 2		
4,800.0	4,800.0	4,800.0	4,800.0	12.6	12.6	-180.00	-30.2	0.0	30.2	5.0	25.22	1.199 Level 2		
4,900.0	4,900.0	4,900.0	4,900.0	12.9	12.9	-180.00	-30.2	0.0	30.2	4.5	25.75	1.174 Level 2		
5,000.0	5,000.0	5,000.0	5,000.0	13.1	13.1	-180.00	-30.2	0.0	30.2	4.0	26.28	1.151 Level 2		
5,100.0	5,100.0	5,100.0	5,100.0	13.4	13.4	-180.00	-30.2	0.0	30.2	3.4	26.81	1.128 Level 2		
5,200.0	5,200.0	5,200.0	5,200.0	13.7	13.7	-180.00	-30.2	0.0	30.2	2.9	27.34	1.106 Level 2		
5,300.0	5,300.0	5,300.0	5,300.0	13.9	13.9	-180.00	-30.2	0.0	30.2	2.4	27.87	1.085 Level 2		
5,400.0	5,400.0	5,400.0	5,400.0	14.2	14.2	-180.00	-30.2	0.0	30.2	1.8	28.40	1.065 Level 2, CC		
5,428.1	5,428.1	5,428.1	5,428.1	14.3	14.3	-146.09	-30.2	0.0	30.3	1.8	28.55	1.062 Level 2, ES, SF		
5,500.0	5,500.0	5,500.0	5,500.0	14.5	14.5	-146.67	-30.2	0.0	30.8	1.9	28.92	1.065 Level 2		
5,600.0	5,599.8	5,599.8	5,599.8	14.7	14.7	-151.36	-30.2	0.0	35.4	6.0	29.36	1.205 Level 2		
5,700.0	5,699.3	5,699.3	5,699.3	14.9	15.0	-157.77	-30.2	0.0	45.1	15.3	29.72	1.516		
5,800.0	5,798.0	5,798.0	5,798.0	15.2	15.3	-163.40	-30.2	0.0	60.2	30.2	29.98	2.008		
5,900.0	5,895.7	5,899.3	5,899.2	15.4	15.5	-166.58	-28.7	-2.3	78.6	48.5	30.12	2.610		
6,000.0	5,992.1	6,001.6	6,001.2	15.7	15.7	-167.30	-23.8	-9.3	97.7	67.5	30.17	3.238		
6,100.0	6,087.0	6,104.8	6,103.3	15.9	15.9	-166.73	-15.6	-21.3	117.2	87.1	30.15	3.888		
6,200.0	6,180.0	6,208.8	6,205.3	16.2	16.1	-165.38	-4.0	-38.2	137.2	107.1	30.08	4.561		
6,300.0	6,270.9	6,313.5	6,306.6	16.5	16.3	-163.56	11.1	-60.2	157.7	127.7	29.98	5.261		
6,400.0	6,359.5	6,419.0	6,406.8	16.7	16.6	-161.42	29.6	-87.1	178.8	148.9	29.86	5.987		
6,500.0	6,445.8	6,525.1	6,505.6	17.0	16.8	-159.12	51.6	-119.1	200.0	169.9	30.09	6.646		
6,600.0	6,531.8	6,625.3	6,597.1	17.3	17.0	-156.78	74.5	-152.6	219.0	188.2	30.71	7.130		
6,700.0	6,617.7	6,723.1	6,686.5	17.6	17.3	-154.83	97.1	-185.4	238.1	206.7	31.32	7.601		
6,800.0	6,703.6	6,821.0	6,775.9	17.9	17.5	-153.17	119.6	-218.2	257.4	225.5	31.94	8.060		

CC - Min centre to center distance or convergent point, SF - min separation factor, ES - min ellipse separation

Company:	Great Western	Local Co-ordinate Reference:	Well Postle IC 11-302HN
Project:	Sec.12-T3N-R68W	TVD Reference:	WELL @ 4941.6ft (RKB - 16.5')
Reference Site:	Postle East Pad Sec.12-T3N-R68W	MD Reference:	WELL @ 4941.6ft (RKB - 16.5')
Site Error:	0.0ft	North Reference:	True
Reference Well:	Postle IC 11-302HN	Survey Calculation Method:	Minimum Curvature
Well Error:	0.0ft	Output errors are at	2.00 sigma
Reference Wellbore	Wellbore #1	Database:	Landmark
Reference Design:	Plan #1 (10-23-13)	Offset TVD Reference:	Offset Datum

Offset Design Postle East Pad Sec.12-T3N-R68W - Postle IC 11-342HC - Wellbore #1 - Plan #1 (10-23-13)												Offset Site Error:	0.0 ft
Survey Program: 0-NS-GYRO-MS, 7355-MWD												Offset Well Error:	0.0 ft
Reference		Offset		Semi Major Axis			Distance						
Measured Depth (ft)	Vertical Depth (ft)	Measured Depth (ft)	Vertical Depth (ft)	Reference (ft)	Offset (ft)	Highside Toolface (°)	Offset Wellbore Centre +N/-S (ft)	+E/-W (ft)	Between Centres (ft)	Between Ellipses (ft)	Minimum Separation (ft)	Separation Factor	Warning
6,900.0	6,789.5	6,918.8	6,865.3	18.3	17.8	-151.75	142.2	-251.1	276.9	244.4	32.55	8.508	
7,000.0	6,874.0	7,016.8	6,954.7	18.6	18.0	-139.01	164.7	-283.9	296.6	263.4	33.23	8.927	
7,100.0	6,950.1	7,120.4	7,047.4	18.9	18.3	-128.83	188.2	-323.5	316.1	282.4	33.72	9.376	
7,200.0	7,013.6	7,232.8	7,135.4	19.2	18.6	-123.28	211.1	-389.0	332.8	298.7	34.16	9.744	
7,300.0	7,061.4	7,351.0	7,207.4	20.3	18.9	-120.26	230.5	-480.3	345.3	310.8	34.50	10.010	
7,400.0	7,090.9	7,474.1	7,254.5	20.4	20.1	-118.84	244.3	-592.7	352.4	317.5	34.90	10.099	
7,500.0	7,100.7	7,597.9	7,269.7	20.6	20.2	-118.58	250.4	-715.0	353.4	317.2	36.17	9.770	
7,600.0	7,100.7	7,697.8	7,269.7	21.2	20.9	-118.74	252.4	-815.0	351.5	313.5	38.00	9.250	
7,700.0	7,100.7	7,797.8	7,269.7	22.5	22.2	-118.90	254.3	-915.0	349.7	309.4	40.36	8.665	
7,800.0	7,100.7	7,897.8	7,269.7	24.2	23.8	-119.07	256.3	-1,014.9	347.9	304.8	43.15	8.064	
7,900.0	7,100.7	7,997.8	7,269.7	26.0	25.6	-119.23	258.2	-1,114.9	346.1	299.8	46.28	7.478	
8,000.0	7,100.7	8,097.7	7,269.7	28.0	27.6	-119.40	260.2	-1,214.8	344.3	294.6	49.69	6.928	
8,100.0	7,100.7	8,197.7	7,269.7	30.2	29.7	-119.57	262.1	-1,314.8	342.5	289.2	53.33	6.422	
8,200.0	7,100.7	8,297.7	7,269.7	32.4	32.0	-119.75	264.1	-1,414.7	340.7	283.5	57.14	5.963	
8,300.0	7,100.7	8,397.7	7,269.7	34.7	34.3	-119.92	266.0	-1,514.7	338.9	277.8	61.08	5.548	
8,400.0	7,100.7	8,497.7	7,269.7	37.1	36.7	-120.10	268.0	-1,614.7	337.1	272.0	65.13	5.175	
8,500.0	7,100.7	8,597.6	7,269.7	39.6	39.1	-120.27	269.9	-1,714.6	335.3	266.0	69.27	4.840	
8,600.0	7,100.7	8,697.6	7,269.7	42.1	41.6	-120.45	271.9	-1,814.6	333.5	260.0	73.47	4.539	
8,700.0	7,100.7	8,797.6	7,269.7	44.6	44.1	-120.63	273.8	-1,914.5	331.7	254.0	77.73	4.268	
8,800.0	7,100.7	8,897.6	7,269.7	47.1	46.7	-120.82	275.8	-2,014.5	329.9	247.9	82.03	4.022	
8,900.0	7,100.7	8,997.6	7,269.7	49.7	49.2	-121.00	277.7	-2,114.5	328.2	241.8	86.36	3.800	
9,000.0	7,100.7	9,097.5	7,269.7	52.3	51.9	-121.19	279.7	-2,214.4	326.4	235.7	90.71	3.598	
9,100.0	7,100.7	9,197.5	7,269.7	55.0	54.5	-121.38	281.6	-2,314.4	324.6	229.5	95.08	3.414	
9,200.0	7,100.7	9,297.5	7,269.7	57.6	57.1	-121.57	283.6	-2,414.3	322.8	223.4	99.46	3.246	
9,300.0	7,100.7	9,397.5	7,269.7	60.3	59.8	-121.77	285.5	-2,514.3	321.1	217.2	103.84	3.092	
9,400.0	7,100.7	9,497.4	7,269.7	62.9	62.5	-121.96	287.5	-2,614.3	319.3	211.1	108.23	2.950	
9,500.0	7,100.7	9,597.4	7,269.7	65.6	65.1	-122.16	289.4	-2,714.2	317.6	204.9	112.62	2.820	
9,600.0	7,100.7	9,697.4	7,269.7	68.3	67.8	-122.36	291.4	-2,814.2	315.8	198.8	117.00	2.699	
9,700.0	7,100.7	9,797.4	7,269.7	71.0	70.5	-122.56	293.3	-2,914.1	314.0	192.7	121.38	2.587	
9,800.0	7,100.7	9,897.4	7,269.7	73.7	73.2	-122.77	295.3	-3,014.1	312.3	186.6	125.75	2.484	
9,900.0	7,100.7	9,997.3	7,269.7	76.4	76.0	-122.97	297.2	-3,114.1	310.6	180.5	130.11	2.387	
10,000.0	7,100.7	10,097.3	7,269.7	79.2	78.7	-123.18	299.2	-3,214.0	308.8	174.4	134.45	2.297	
10,100.0	7,100.7	10,197.3	7,269.7	81.9	81.4	-123.40	301.1	-3,314.0	307.1	168.3	138.78	2.213	
10,200.0	7,100.7	10,297.3	7,269.7	84.6	84.2	-123.61	303.1	-3,413.9	305.4	162.3	143.09	2.134	
10,300.0	7,100.7	10,397.3	7,269.7	87.4	86.9	-123.83	305.0	-3,513.9	303.6	156.2	147.39	2.060	
10,400.0	7,100.7	10,497.2	7,269.7	90.1	89.6	-124.04	307.0	-3,613.9	301.9	150.3	151.66	1.991	
10,500.0	7,100.7	10,597.2	7,269.7	92.9	92.4	-124.27	308.9	-3,713.8	300.2	144.3	155.92	1.925	
10,600.0	7,100.7	10,697.2	7,269.7	95.6	95.1	-124.49	310.9	-3,813.8	298.5	138.3	160.15	1.864	
10,700.0	7,100.7	10,797.2	7,269.7	98.4	97.9	-124.72	312.8	-3,913.7	296.8	132.4	164.36	1.806	
10,800.0	7,100.7	10,897.1	7,269.7	101.1	100.7	-124.95	314.8	-4,013.7	295.1	126.5	168.55	1.751	
10,900.0	7,100.7	10,997.1	7,269.7	103.9	103.4	-125.18	316.7	-4,113.7	293.4	120.7	172.71	1.699	
11,000.0	7,100.7	11,097.1	7,269.7	106.6	106.2	-125.41	318.7	-4,213.6	291.7	114.9	176.84	1.649	
11,100.0	7,100.7	11,197.1	7,269.7	109.4	108.9	-125.65	320.6	-4,313.6	290.0	109.1	180.94	1.603	
11,200.0	7,100.7	11,297.1	7,269.7	112.2	111.7	-125.89	322.6	-4,413.5	288.3	103.3	185.02	1.558	
11,300.0	7,100.7	11,397.0	7,269.7	114.9	114.5	-126.13	324.5	-4,513.5	286.6	97.6	189.06	1.516	
11,400.0	7,100.7	11,497.0	7,269.7	117.7	117.3	-126.38	326.5	-4,613.5	285.0	91.9	193.08	1.476 Level 3	
11,500.0	7,100.7	11,597.0	7,269.7	120.5	120.0	-126.63	328.4	-4,713.4	283.3	86.2	197.06	1.438 Level 3	
11,600.0	7,100.7	11,697.0	7,269.7	123.2	122.8	-126.88	330.4	-4,813.4	281.6	80.6	201.01	1.401 Level 3	
11,700.0	7,100.7	11,797.0	7,269.7	126.0	125.6	-127.13	332.3	-4,913.3	280.0	75.1	204.92	1.366 Level 3	
11,800.0	7,100.7	11,896.9	7,269.7	128.8	128.4	-127.39	334.3	-5,013.3	278.3	69.5	208.80	1.333 Level 3	
11,833.0	7,100.7	11,925.4	7,269.7	129.7	129.2	-127.47	334.8	-5,041.7	277.8	67.8	210.00	1.323 Level 3	
11,834.4	7,100.7	11,925.4	7,269.7	129.7	129.2	-127.47	334.8	-5,041.7	277.8	67.8	210.03	1.323 Level 3	

CC - Min centre to center distance or convergent point, SF - min separation factor, ES - min ellipse separation

Company:	Great Western	Local Co-ordinate Reference:	Well Postle IC 11-302HN
Project:	Sec.12-T3N-R68W	TVD Reference:	WELL @ 4941.6ft (RKB - 16.5')
Reference Site:	Postle East Pad Sec.12-T3N-R68W	MD Reference:	WELL @ 4941.6ft (RKB - 16.5')
Site Error:	0.0ft	North Reference:	True
Reference Well:	Postle IC 11-302HN	Survey Calculation Method:	Minimum Curvature
Well Error:	0.0ft	Output errors are at	2.00 sigma
Reference Wellbore	Wellbore #1	Database:	Landmark
Reference Design:	Plan #1 (10-23-13)	Offset TVD Reference:	Offset Datum

Company:	Great Western	Local Co-ordinate Reference:	Well Postle IC 11-302HN
Project:	Sec.12-T3N-R68W	TVD Reference:	WELL @ 4941.6ft (RKB - 16.5')
Reference Site:	Postle East Pad Sec.12-T3N-R68W	MD Reference:	WELL @ 4941.6ft (RKB - 16.5')
Site Error:	0.0ft	North Reference:	True
Reference Well:	Postle IC 11-302HN	Survey Calculation Method:	Minimum Curvature
Well Error:	0.0ft	Output errors are at	2.00 sigma
Reference Wellbore	Wellbore #1	Database:	Landmark
Reference Design:	Plan #1 (10-23-13)	Offset TVD Reference:	Offset Datum

Offset Design													Offset Site Error:	0.0 ft
Survey Program: 0-NS-GYRO-MS, 7190-MWD													Offset Well Error:	0.0 ft
Reference		Offset		Semi Major Axis			Distance							Warning
Measured Depth (ft)	Vertical Depth (ft)	Measured Depth (ft)	Vertical Depth (ft)	Reference (ft)	Offset (ft)	Highside Toolface (°)	Offset Wellbore Centre +N/-S (ft)	+E/-W (ft)	Between Centres (ft)	Between Ellipses (ft)	Minimum Separation (ft)	Separation Factor		
0.0	0.0	0.0	0.0	0.0	0.0	180.00	-59.4	0.0	59.4					
100.0	100.0	100.0	100.0	0.1	0.1	180.00	-59.4	0.0	59.4	59.1	0.27	223.703		
200.0	200.0	200.0	200.0	0.4	0.4	180.00	-59.4	0.0	59.4	58.6	0.80	74.568		
300.0	300.0	300.0	300.0	0.7	0.7	180.00	-59.4	0.0	59.4	58.1	1.33	44.741		
400.0	400.0	400.0	400.0	0.9	0.9	180.00	-59.4	0.0	59.4	57.5	1.86	31.958		
500.0	500.0	500.0	500.0	1.2	1.2	180.00	-59.4	0.0	59.4	57.0	2.39	24.856		
600.0	600.0	600.0	600.0	1.5	1.5	180.00	-59.4	0.0	59.4	56.5	2.92	20.337		
700.0	700.0	700.0	700.0	1.7	1.7	180.00	-59.4	0.0	59.4	55.9	3.45	17.208		
800.0	800.0	800.0	800.0	2.0	2.0	180.00	-59.4	0.0	59.4	55.4	3.98	14.914		
900.0	900.0	900.0	900.0	2.3	2.3	180.00	-59.4	0.0	59.4	54.9	4.51	13.159		
1,000.0	1,000.0	1,000.0	1,000.0	2.5	2.5	180.00	-59.4	0.0	59.4	54.3	5.04	11.774		
1,100.0	1,100.0	1,100.0	1,100.0	2.8	2.8	180.00	-59.4	0.0	59.4	53.8	5.57	10.653		
1,200.0	1,200.0	1,200.0	1,200.0	3.1	3.1	180.00	-59.4	0.0	59.4	53.3	6.11	9.726		
1,300.0	1,300.0	1,300.0	1,300.0	3.3	3.3	180.00	-59.4	0.0	59.4	52.7	6.64	8.948		
1,400.0	1,400.0	1,400.0	1,400.0	3.6	3.6	180.00	-59.4	0.0	59.4	52.2	7.17	8.285		
1,500.0	1,500.0	1,500.0	1,500.0	3.8	3.8	180.00	-59.4	0.0	59.4	51.7	7.70	7.714		
1,600.0	1,600.0	1,600.0	1,600.0	4.1	4.1	180.00	-59.4	0.0	59.4	51.2	8.23	7.216		
1,700.0	1,700.0	1,700.0	1,700.0	4.4	4.4	180.00	-59.4	0.0	59.4	50.6	8.76	6.779		
1,800.0	1,800.0	1,800.0	1,800.0	4.6	4.6	180.00	-59.4	0.0	59.4	50.1	9.29	6.392		
1,900.0	1,900.0	1,900.0	1,900.0	4.9	4.9	180.00	-59.4	0.0	59.4	49.6	9.82	6.046		
2,000.0	2,000.0	2,000.0	2,000.0	5.2	5.2	180.00	-59.4	0.0	59.4	49.0	10.35	5.736		
2,100.0	2,100.0	2,100.0	2,100.0	5.4	5.4	180.00	-59.4	0.0	59.4	48.5	10.88	5.456		
2,200.0	2,200.0	2,200.0	2,200.0	5.7	5.7	180.00	-59.4	0.0	59.4	48.0	11.41	5.202		
2,300.0	2,300.0	2,300.0	2,300.0	6.0	6.0	180.00	-59.4	0.0	59.4	47.4	11.95	4.971		
2,400.0	2,400.0	2,400.0	2,400.0	6.2	6.2	180.00	-59.4	0.0	59.4	46.9	12.48	4.760		
2,500.0	2,500.0	2,500.0	2,500.0	6.5	6.5	180.00	-59.4	0.0	59.4	46.4	13.01	4.565		
2,600.0	2,600.0	2,600.0	2,600.0	6.8	6.8	180.00	-59.4	0.0	59.4	45.8	13.54	4.386		
2,700.0	2,700.0	2,700.0	2,700.0	7.0	7.0	180.00	-59.4	0.0	59.4	45.3	14.07	4.221		
2,800.0	2,800.0	2,800.0	2,800.0	7.3	7.3	180.00	-59.4	0.0	59.4	44.8	14.60	4.067		
2,900.0	2,900.0	2,900.0	2,900.0	7.6	7.6	180.00	-59.4	0.0	59.4	44.3	15.13	3.925		
3,000.0	3,000.0	3,000.0	3,000.0	7.8	7.8	180.00	-59.4	0.0	59.4	43.7	15.66	3.792		
3,100.0	3,100.0	3,100.0	3,100.0	8.1	8.1	180.00	-59.4	0.0	59.4	43.2	16.19	3.667		
3,200.0	3,200.0	3,200.0	3,200.0	8.4	8.4	180.00	-59.4	0.0	59.4	42.7	16.72	3.551		
3,300.0	3,300.0	3,300.0	3,300.0	8.6	8.6	180.00	-59.4	0.0	59.4	42.1	17.25	3.442		
3,400.0	3,400.0	3,400.0	3,400.0	8.9	8.9	180.00	-59.4	0.0	59.4	41.6	17.78	3.339		
3,500.0	3,500.0	3,500.0	3,500.0	9.2	9.2	180.00	-59.4	0.0	59.4	41.1	18.32	3.242		
3,600.0	3,600.0	3,600.0	3,600.0	9.4	9.4	180.00	-59.4	0.0	59.4	40.5	18.85	3.151		
3,700.0	3,700.0	3,700.0	3,700.0	9.7	9.7	180.00	-59.4	0.0	59.4	40.0	19.38	3.064		
3,800.0	3,800.0	3,800.0	3,800.0	10.0	10.0	180.00	-59.4	0.0	59.4	39.5	19.91	2.983		
3,900.0	3,900.0	3,900.0	3,900.0	10.2	10.2	180.00	-59.4	0.0	59.4	38.9	20.44	2.905		
4,000.0	4,000.0	4,000.0	4,000.0	10.5	10.5	180.00	-59.4	0.0	59.4	38.4	20.97	2.832		
4,100.0	4,100.0	4,100.0	4,100.0	10.8	10.8	180.00	-59.4	0.0	59.4	37.9	21.50	2.762		
4,200.0	4,200.0	4,200.0	4,200.0	11.0	11.0	180.00	-59.4	0.0	59.4	37.3	22.03	2.695		
4,300.0	4,300.0	4,300.0	4,300.0	11.3	11.3	180.00	-59.4	0.0	59.4	36.8	22.56	2.632		
4,400.0	4,400.0	4,400.0	4,400.0	11.5	11.5	180.00	-59.4	0.0	59.4	36.3	23.09	2.571		
4,500.0	4,500.0	4,500.0	4,500.0	11.8	11.8	180.00	-59.4	0.0	59.4	35.8	23.62	2.514		
4,600.0	4,600.0	4,600.0	4,600.0	12.1	12.1	180.00	-59.4	0.0	59.4	35.2	24.16	2.458		
4,700.0	4,700.0	4,700.0	4,700.0	12.3	12.3	180.00	-59.4	0.0	59.4	34.7	24.69	2.405		
4,800.0	4,800.0	4,800.0	4,800.0	12.6	12.6	180.00	-59.4	0.0	59.4	34.2	25.22	2.355		
4,900.0	4,900.0	4,900.0	4,900.0	12.9	12.9	180.00	-59.4	0.0	59.4	33.6	25.75	2.306		
5,000.0	5,000.0	5,000.0	5,000.0	13.1	13.1	180.00	-59.4	0.0	59.4	33.1	26.28	2.260		
5,100.0	5,100.0	5,100.0	5,100.0	13.4	13.4	180.00	-59.4	0.0	59.4	32.6	26.81	2.215		

CC - Min centre to center distance or convergent point, SF - min separation factor, ES - min ellipse separation

Company:	Great Western	Local Co-ordinate Reference:	Well Postle IC 11-302HN
Project:	Sec.12-T3N-R68W	TVD Reference:	WELL @ 4941.6ft (RKB - 16.5')
Reference Site:	Postle East Pad Sec.12-T3N-R68W	MD Reference:	WELL @ 4941.6ft (RKB - 16.5')
Site Error:	0.0ft	North Reference:	True
Reference Well:	Postle IC 11-302HN	Survey Calculation Method:	Minimum Curvature
Well Error:	0.0ft	Output errors are at	2.00 sigma
Reference Wellbore	Wellbore #1	Database:	Landmark
Reference Design:	Plan #1 (10-23-13)	Offset TVD Reference:	Offset Datum

Offset Design Postle East Pad Sec.12-T3N-R68W - Postle IC 11-379HN - Wellbore #1 - Plan #1 (10-23-13)													Offset Site Error:	0.0 ft
Survey Program: 0-NS-GYRO-MS, 7190-MWD													Offset Well Error:	0.0 ft
Reference		Offset		Semi Major Axis			Distance							Warning
Measured Depth (ft)	Vertical Depth (ft)	Measured Depth (ft)	Vertical Depth (ft)	Reference (ft)	Offset (ft)	Highside Toolface (°)	Offset Wellbore Centre +N/-S (ft)	+E/-W (ft)	Between Centres (ft)	Between Ellipses (ft)	Minimum Separation (ft)	Separation Factor		
5,200.0	5,200.0	5,200.0	5,200.0	13.7	13.7	180.00	-59.4	0.0	59.4	32.0	27.34	2.172		
5,300.0	5,300.0	5,300.0	5,300.0	13.9	13.9	180.00	-59.4	0.0	59.4	31.5	27.87	2.131		
5,400.0	5,400.0	5,400.0	5,400.0	14.2	14.2	180.00	-59.4	0.0	59.4	31.0	28.40	2.091 CC		
5,427.9	5,427.9	5,427.9	5,427.9	14.3	14.3	-146.03	-59.4	0.0	59.5	30.9	28.55	2.083 ES		
5,500.0	5,500.0	5,500.0	5,500.0	14.5	14.5	-146.33	-59.4	0.0	59.9	31.0	28.92	2.072 SF		
5,600.0	5,599.8	5,599.8	5,599.8	14.7	14.7	-148.89	-59.4	0.0	64.5	35.1	29.37	2.195		
5,700.0	5,699.3	5,699.3	5,699.3	14.9	15.0	-153.05	-59.4	0.0	73.8	44.1	29.73	2.483		
5,800.0	5,798.0	5,798.0	5,798.0	15.2	15.3	-157.57	-59.4	0.0	88.4	58.4	30.01	2.946		
5,900.0	5,895.7	5,895.7	5,895.7	15.4	15.5	-161.66	-59.4	0.0	108.4	78.2	30.18	3.591		
6,000.0	5,992.1	5,992.1	5,992.1	15.7	15.8	-165.01	-59.4	0.0	133.8	103.6	30.26	4.423		
6,100.0	6,087.0	6,091.5	6,091.4	15.9	16.0	-166.57	-59.4	-3.5	163.4	133.2	30.19	5.411		
6,200.0	6,180.0	6,191.6	6,190.8	16.2	16.1	-165.60	-59.4	-15.2	195.1	165.1	30.03	6.498		
6,300.0	6,270.9	6,291.2	6,288.4	16.5	16.2	-163.12	-59.4	-35.0	229.2	199.3	29.85	7.677		
6,400.0	6,359.5	6,389.5	6,382.8	16.7	16.3	-159.77	-59.5	-62.3	265.9	236.2	29.70	8.955		
6,500.0	6,445.8	6,485.9	6,472.9	17.0	16.5	-156.16	-59.6	-96.5	305.5	275.5	29.93	10.207		
6,600.0	6,531.8	6,580.8	6,558.6	17.3	16.6	-152.37	-59.6	-137.1	344.9	314.4	30.57	11.282		
6,700.0	6,617.7	6,672.7	6,638.5	17.6	16.7	-148.36	-59.7	-182.6	384.6	353.3	31.28	12.297		
6,800.0	6,703.6	6,761.0	6,714.1	17.9	16.9	-144.89	-59.8	-228.2	425.4	393.5	31.97	13.307		
6,900.0	6,789.5	6,849.4	6,789.7	18.3	17.1	-142.01	-59.9	-273.9	467.4	434.8	32.65	14.317		
7,000.0	6,874.0	6,938.8	6,866.3	18.6	17.2	-125.55	-60.0	-320.1	509.3	475.4	33.90	15.025		
7,100.0	6,950.1	7,029.3	6,941.1	18.9	17.4	-110.05	-60.1	-370.9	546.9	511.7	35.27	15.508		
7,200.0	7,013.6	7,121.7	7,005.6	19.2	17.6	-100.24	-60.2	-436.8	578.3	542.0	36.30	15.931		
7,300.0	7,061.4	7,217.1	7,056.3	20.3	18.7	-94.21	-60.3	-517.4	601.8	564.9	36.84	16.336		
7,400.0	7,090.9	7,315.3	7,089.1	20.4	18.8	-90.96	-60.4	-609.7	616.3	579.0	37.35	16.501		
7,500.0	7,100.7	7,415.0	7,100.7	20.6	18.9	-90.00	-60.5	-708.5	621.1	582.4	38.68	16.057		
7,600.0	7,100.7	7,514.9	7,100.7	21.2	19.9	-90.00	-60.5	-808.5	621.1	580.2	40.88	15.191		
7,700.0	7,100.7	7,614.9	7,100.7	22.5	21.2	-90.00	-60.6	-908.5	621.0	577.4	43.68	14.217		
7,800.0	7,100.7	7,714.9	7,100.7	24.2	22.9	-90.00	-60.7	-1,008.5	621.0	574.0	46.99	13.215		
7,900.0	7,100.7	7,814.9	7,100.7	26.0	24.7	-90.00	-60.8	-1,108.5	621.0	570.3	50.71	12.247		
8,000.0	7,100.7	7,914.9	7,100.7	28.0	26.7	-90.00	-60.9	-1,208.5	620.9	566.2	54.74	11.342		
8,100.0	7,100.7	8,014.9	7,100.7	30.2	28.9	-90.00	-60.9	-1,308.5	620.9	561.8	59.04	10.516		
8,200.0	7,100.7	8,114.9	7,100.7	32.4	31.2	-90.00	-61.0	-1,408.5	620.8	557.3	63.54	9.771		
8,300.0	7,100.7	8,214.9	7,100.7	34.7	33.5	-90.00	-61.1	-1,508.5	620.8	552.6	68.21	9.102		
8,400.0	7,100.7	8,314.9	7,100.7	37.1	35.9	-90.00	-61.2	-1,608.5	620.8	547.7	73.01	8.503		
8,500.0	7,100.7	8,414.9	7,100.7	39.6	38.4	-90.00	-61.3	-1,708.5	620.7	542.8	77.92	7.966		
8,600.0	7,100.7	8,514.9	7,100.7	42.1	40.9	-90.00	-61.3	-1,808.5	620.7	537.8	82.91	7.486		
8,700.0	7,100.7	8,614.9	7,100.7	44.6	43.4	-90.00	-61.4	-1,908.5	620.6	532.6	87.98	7.054		
8,800.0	7,100.7	8,714.9	7,100.7	47.1	46.0	-90.00	-61.5	-2,008.5	620.6	527.5	93.12	6.665		
8,900.0	7,100.7	8,814.9	7,100.7	49.7	48.6	-90.00	-61.6	-2,108.5	620.5	522.2	98.30	6.313		
9,000.0	7,100.7	8,914.9	7,100.7	52.3	51.2	-90.00	-61.7	-2,208.5	620.5	517.0	103.53	5.993		
9,100.0	7,100.7	9,014.9	7,100.7	55.0	53.8	-90.00	-61.7	-2,308.5	620.5	511.7	108.80	5.703		
9,200.0	7,100.7	9,114.9	7,100.7	57.6	56.5	-90.00	-61.8	-2,408.5	620.4	506.3	114.10	5.437		
9,300.0	7,100.7	9,214.9	7,100.7	60.3	59.2	-90.00	-61.9	-2,508.5	620.4	500.9	119.43	5.194		
9,400.0	7,100.7	9,314.9	7,100.7	62.9	61.8	-90.00	-62.0	-2,608.5	620.3	495.6	124.78	4.971		
9,500.0	7,100.7	9,414.9	7,100.7	65.6	64.5	-90.00	-62.1	-2,708.5	620.3	490.1	130.16	4.766		
9,600.0	7,100.7	9,514.9	7,100.7	68.3	67.2	-90.00	-62.2	-2,808.5	620.3	484.7	135.55	4.576		
9,700.0	7,100.7	9,614.9	7,100.7	71.0	70.0	-90.00	-62.2	-2,908.5	620.2	479.2	140.97	4.400		
9,800.0	7,100.7	9,714.9	7,100.7	73.7	72.7	-90.00	-62.3	-3,008.5	620.2	473.8	146.39	4.236		
9,900.0	7,100.7	9,814.9	7,100.7	76.4	75.4	-90.00	-62.4	-3,108.5	620.1	468.3	151.83	4.084		
10,000.0	7,100.7	9,914.9	7,100.7	79.2	78.1	-90.00	-62.5	-3,208.5	620.1	462.8	157.28	3.942		
10,100.0	7,100.7	10,014.9	7,100.7	81.9	80.9	-90.00	-62.6	-3,308.5	620.0	457.3	162.75	3.810		
10,200.0	7,100.7	10,114.9	7,100.7	84.6	83.6	-90.00	-62.6	-3,408.5	620.0	451.8	168.22	3.686		

CC - Min centre to center distance or convergent point, SF - min separation factor, ES - min ellipse separation

Company:	Great Western	Local Co-ordinate Reference:	Well Postle IC 11-302HN
Project:	Sec.12-T3N-R68W	TVD Reference:	WELL @ 4941.6ft (RKB - 16.5')
Reference Site:	Postle East Pad Sec.12-T3N-R68W	MD Reference:	WELL @ 4941.6ft (RKB - 16.5')
Site Error:	0.0ft	North Reference:	True
Reference Well:	Postle IC 11-302HN	Survey Calculation Method:	Minimum Curvature
Well Error:	0.0ft	Output errors are at	2.00 sigma
Reference Wellbore	Wellbore #1	Database:	Landmark
Reference Design:	Plan #1 (10-23-13)	Offset TVD Reference:	Offset Datum

Offset Design												Offset Site Error:	0.0 ft
Postle East Pad Sec.12-T3N-R68W - Postle IC 11-379HN - Wellbore #1 - Plan #1 (10-23-13)												Offset Well Error:	0.0 ft
Survey Program: 0-NS-GYRO-MS, 7190-MWD													
Reference		Offset		Semi Major Axis			Distance						
Measured Depth (ft)	Vertical Depth (ft)	Measured Depth (ft)	Vertical Depth (ft)	Reference (ft)	Offset (ft)	Highside Toolface (°)	Offset Wellbore Centre +N/-S (ft)	+E/-W (ft)	Between Centres (ft)	Between Ellipses (ft)	Minimum Separation (ft)	Separation Factor	Warning
10,300.0	7,100.7	10,214.9	7,100.7	87.4	86.3	-90.00	-62.7	-3,508.5	620.0	446.3	173.70	3.569	
10,400.0	7,100.7	10,314.9	7,100.7	90.1	89.1	-90.00	-62.8	-3,608.5	619.9	440.7	179.19	3.460	
10,500.0	7,100.7	10,414.9	7,100.7	92.9	91.8	-90.00	-62.9	-3,708.5	619.9	435.2	184.68	3.356	
10,600.0	7,100.7	10,514.9	7,100.7	95.6	94.6	-90.00	-63.0	-3,808.5	619.8	429.6	190.19	3.259	
10,700.0	7,100.7	10,614.9	7,100.7	98.4	97.3	-90.00	-63.0	-3,908.5	619.8	424.1	195.70	3.167	
10,800.0	7,100.7	10,714.9	7,100.7	101.1	100.1	-90.00	-63.1	-4,008.5	619.7	418.5	201.21	3.080	
10,900.0	7,100.7	10,814.9	7,100.7	103.9	102.9	-90.00	-63.2	-4,108.5	619.7	413.0	206.73	2.998	
11,000.0	7,100.7	10,914.9	7,100.7	106.6	105.6	-90.00	-63.3	-4,208.5	619.7	407.4	212.26	2.919	
11,100.0	7,100.7	11,014.9	7,100.7	109.4	108.4	-90.00	-63.4	-4,308.5	619.6	401.8	217.79	2.845	
11,200.0	7,100.7	11,114.9	7,100.7	112.2	111.2	-90.00	-63.4	-4,408.5	619.6	396.3	223.32	2.774	
11,300.0	7,100.7	11,214.9	7,100.7	114.9	113.9	-90.00	-63.5	-4,508.5	619.5	390.7	228.86	2.707	
11,400.0	7,100.7	11,314.9	7,100.7	117.7	116.7	-90.00	-63.6	-4,608.5	619.5	385.1	234.40	2.643	
11,500.0	7,100.7	11,414.9	7,100.7	120.5	119.5	-90.00	-63.7	-4,708.5	619.5	379.5	239.94	2.582	
11,600.0	7,100.7	11,514.9	7,100.7	123.2	122.3	-90.00	-63.8	-4,808.5	619.4	373.9	245.49	2.523	
11,700.0	7,100.7	11,614.9	7,100.7	126.0	125.0	-90.00	-63.9	-4,908.5	619.4	368.3	251.04	2.467	
11,800.0	7,100.7	11,714.9	7,100.7	128.8	127.8	-90.00	-63.9	-5,008.5	619.3	362.7	256.59	2.414	
11,828.7	7,100.7	11,743.6	7,100.7	129.6	128.6	-90.00	-64.0	-5,037.1	619.3	361.1	258.18	2.399	
11,834.4	7,100.7	11,746.6	7,100.7	129.7	128.7	-90.00	-64.0	-5,040.2	619.3	360.9	258.42	2.397	

Company:	Great Western	Local Co-ordinate Reference:	Well Postle IC 11-302HN
Project:	Sec.12-T3N-R68W	TVD Reference:	WELL @ 4941.6ft (RKB - 16.5')
Reference Site:	Postle East Pad Sec.12-T3N-R68W	MD Reference:	WELL @ 4941.6ft (RKB - 16.5')
Site Error:	0.0ft	North Reference:	True
Reference Well:	Postle IC 11-302HN	Survey Calculation Method:	Minimum Curvature
Well Error:	0.0ft	Output errors are at	2.00 sigma
Reference Wellbore	Wellbore #1	Database:	Landmark
Reference Design:	Plan #1 (10-23-13)	Offset TVD Reference:	Offset Datum

Offset Design												Offset Site Error:	0.0 ft
Survey Program: 0-NS-GYRO-MS, 7215-MWD												Offset Well Error:	0.0 ft
Reference		Offset		Semi Major Axis			Distance						
Measured Depth (ft)	Vertical Depth (ft)	Measured Depth (ft)	Vertical Depth (ft)	Reference (ft)	Offset (ft)	Highside Toolface (°)	Offset Wellbore Centre +N/-S (ft)	+E/-W (ft)	Between Centres (ft)	Between Ellipses (ft)	Minimum Separation (ft)	Separation Factor	Warning
0.0	0.0	0.0	0.0	0.0	0.0	-179.64	-90.0	-0.6	90.0				
100.0	100.0	100.0	100.0	0.1	0.1	-179.64	-90.0	-0.6	90.0	89.7	0.27	339.008	
200.0	200.0	200.0	200.0	0.4	0.4	-179.64	-90.0	-0.6	90.0	89.2	0.80	113.003	
300.0	300.0	300.0	300.0	0.7	0.7	-179.64	-90.0	-0.6	90.0	88.7	1.33	67.802	
400.0	400.0	400.0	400.0	0.9	0.9	-179.64	-90.0	-0.6	90.0	88.1	1.86	48.430	
500.0	500.0	500.0	500.0	1.2	1.2	-179.64	-90.0	-0.6	90.0	87.6	2.39	37.668	
600.0	600.0	600.0	600.0	1.5	1.5	-179.64	-90.0	-0.6	90.0	87.1	2.92	30.819	
700.0	700.0	700.0	700.0	1.7	1.7	-179.64	-90.0	-0.6	90.0	86.5	3.45	26.078	
800.0	800.0	800.0	800.0	2.0	2.0	-179.64	-90.0	-0.6	90.0	86.0	3.98	22.601	
900.0	900.0	900.0	900.0	2.3	2.3	-179.64	-90.0	-0.6	90.0	85.5	4.51	19.942	
1,000.0	1,000.0	1,000.0	1,000.0	2.5	2.5	-179.64	-90.0	-0.6	90.0	84.9	5.04	17.843	
1,100.0	1,100.0	1,100.0	1,100.0	2.8	2.8	-179.64	-90.0	-0.6	90.0	84.4	5.57	16.143	
1,200.0	1,200.0	1,200.0	1,200.0	3.1	3.1	-179.64	-90.0	-0.6	90.0	83.9	6.11	14.739	
1,300.0	1,300.0	1,300.0	1,300.0	3.3	3.3	-179.64	-90.0	-0.6	90.0	83.4	6.64	13.560	
1,400.0	1,400.0	1,400.0	1,400.0	3.6	3.6	-179.64	-90.0	-0.6	90.0	82.8	7.17	12.556	
1,500.0	1,500.0	1,500.0	1,500.0	3.8	3.8	-179.64	-90.0	-0.6	90.0	82.3	7.70	11.690	
1,600.0	1,600.0	1,600.0	1,600.0	4.1	4.1	-179.64	-90.0	-0.6	90.0	81.8	8.23	10.936	
1,700.0	1,700.0	1,700.0	1,700.0	4.4	4.4	-179.64	-90.0	-0.6	90.0	81.2	8.76	10.273	
1,800.0	1,800.0	1,800.0	1,800.0	4.6	4.6	-179.64	-90.0	-0.6	90.0	80.7	9.29	9.686	
1,900.0	1,900.0	1,900.0	1,900.0	4.9	4.9	-179.64	-90.0	-0.6	90.0	80.2	9.82	9.162	
2,000.0	2,000.0	2,000.0	2,000.0	5.2	5.2	-179.64	-90.0	-0.6	90.0	79.6	10.35	8.693	
2,100.0	2,100.0	2,100.0	2,100.0	5.4	5.4	-179.64	-90.0	-0.6	90.0	79.1	10.88	8.268	
2,200.0	2,200.0	2,200.0	2,200.0	5.7	5.7	-179.64	-90.0	-0.6	90.0	78.6	11.41	7.884	
2,300.0	2,300.0	2,300.0	2,300.0	6.0	6.0	-179.64	-90.0	-0.6	90.0	78.0	11.95	7.534	
2,400.0	2,400.0	2,400.0	2,400.0	6.2	6.2	-179.64	-90.0	-0.6	90.0	77.5	12.48	7.213	
2,500.0	2,500.0	2,500.0	2,500.0	6.5	6.5	-179.64	-90.0	-0.6	90.0	77.0	13.01	6.919	
2,600.0	2,600.0	2,600.0	2,600.0	6.8	6.8	-179.64	-90.0	-0.6	90.0	76.5	13.54	6.647	
2,700.0	2,700.0	2,700.0	2,700.0	7.0	7.0	-179.64	-90.0	-0.6	90.0	75.9	14.07	6.396	
2,800.0	2,800.0	2,800.0	2,800.0	7.3	7.3	-179.64	-90.0	-0.6	90.0	75.4	14.60	6.164	
2,900.0	2,900.0	2,900.0	2,900.0	7.6	7.6	-179.64	-90.0	-0.6	90.0	74.9	15.13	5.948	
3,000.0	3,000.0	3,000.0	3,000.0	7.8	7.8	-179.64	-90.0	-0.6	90.0	74.3	15.66	5.746	
3,100.0	3,100.0	3,100.0	3,100.0	8.1	8.1	-179.64	-90.0	-0.6	90.0	73.8	16.19	5.558	
3,200.0	3,200.0	3,200.0	3,200.0	8.4	8.4	-179.64	-90.0	-0.6	90.0	73.3	16.72	5.381	
3,300.0	3,300.0	3,300.0	3,300.0	8.6	8.6	-179.64	-90.0	-0.6	90.0	72.7	17.25	5.216	
3,400.0	3,400.0	3,400.0	3,400.0	8.9	8.9	-179.64	-90.0	-0.6	90.0	72.2	17.78	5.060	
3,500.0	3,500.0	3,500.0	3,500.0	9.2	9.2	-179.64	-90.0	-0.6	90.0	71.7	18.32	4.913	
3,600.0	3,600.0	3,600.0	3,600.0	9.4	9.4	-179.64	-90.0	-0.6	90.0	71.1	18.85	4.775	
3,700.0	3,700.0	3,700.0	3,700.0	9.7	9.7	-179.64	-90.0	-0.6	90.0	70.6	19.38	4.644	
3,800.0	3,800.0	3,800.0	3,800.0	10.0	10.0	-179.64	-90.0	-0.6	90.0	70.1	19.91	4.520	
3,900.0	3,900.0	3,900.0	3,900.0	10.2	10.2	-179.64	-90.0	-0.6	90.0	69.5	20.44	4.403	
4,000.0	4,000.0	4,000.0	4,000.0	10.5	10.5	-179.64	-90.0	-0.6	90.0	69.0	20.97	4.291	
4,100.0	4,100.0	4,100.0	4,100.0	10.8	10.8	-179.64	-90.0	-0.6	90.0	68.5	21.50	4.185	
4,200.0	4,200.0	4,200.0	4,200.0	11.0	11.0	-179.64	-90.0	-0.6	90.0	68.0	22.03	4.084	
4,300.0	4,300.0	4,300.0	4,300.0	11.3	11.3	-179.64	-90.0	-0.6	90.0	67.4	22.56	3.988	
4,400.0	4,400.0	4,400.0	4,400.0	11.5	11.5	-179.64	-90.0	-0.6	90.0	66.9	23.09	3.897	
4,500.0	4,500.0	4,500.0	4,500.0	11.8	11.8	-179.64	-90.0	-0.6	90.0	66.4	23.62	3.809	
4,600.0	4,600.0	4,600.0	4,600.0	12.1	12.1	-179.64	-90.0	-0.6	90.0	65.8	24.16	3.725	
4,700.0	4,700.0	4,700.0	4,700.0	12.3	12.3	-179.64	-90.0	-0.6	90.0	65.3	24.69	3.645	
4,800.0	4,800.0	4,800.0	4,800.0	12.6	12.6	-179.64	-90.0	-0.6	90.0	64.8	25.22	3.569	
4,900.0	4,900.0	4,900.0	4,900.0	12.9	12.9	-179.64	-90.0	-0.6	90.0	64.2	25.75	3.495	
5,000.0	5,000.0	5,000.0	5,000.0	13.1	13.1	-179.64	-90.0	-0.6	90.0	63.7	26.28	3.424	
5,100.0	5,100.0	5,100.0	5,100.0	13.4	13.4	-179.64	-90.0	-0.6	90.0	63.2	26.81	3.357	

CC - Min centre to center distance or convergent point, SF - min separation factor, ES - min ellipse separation

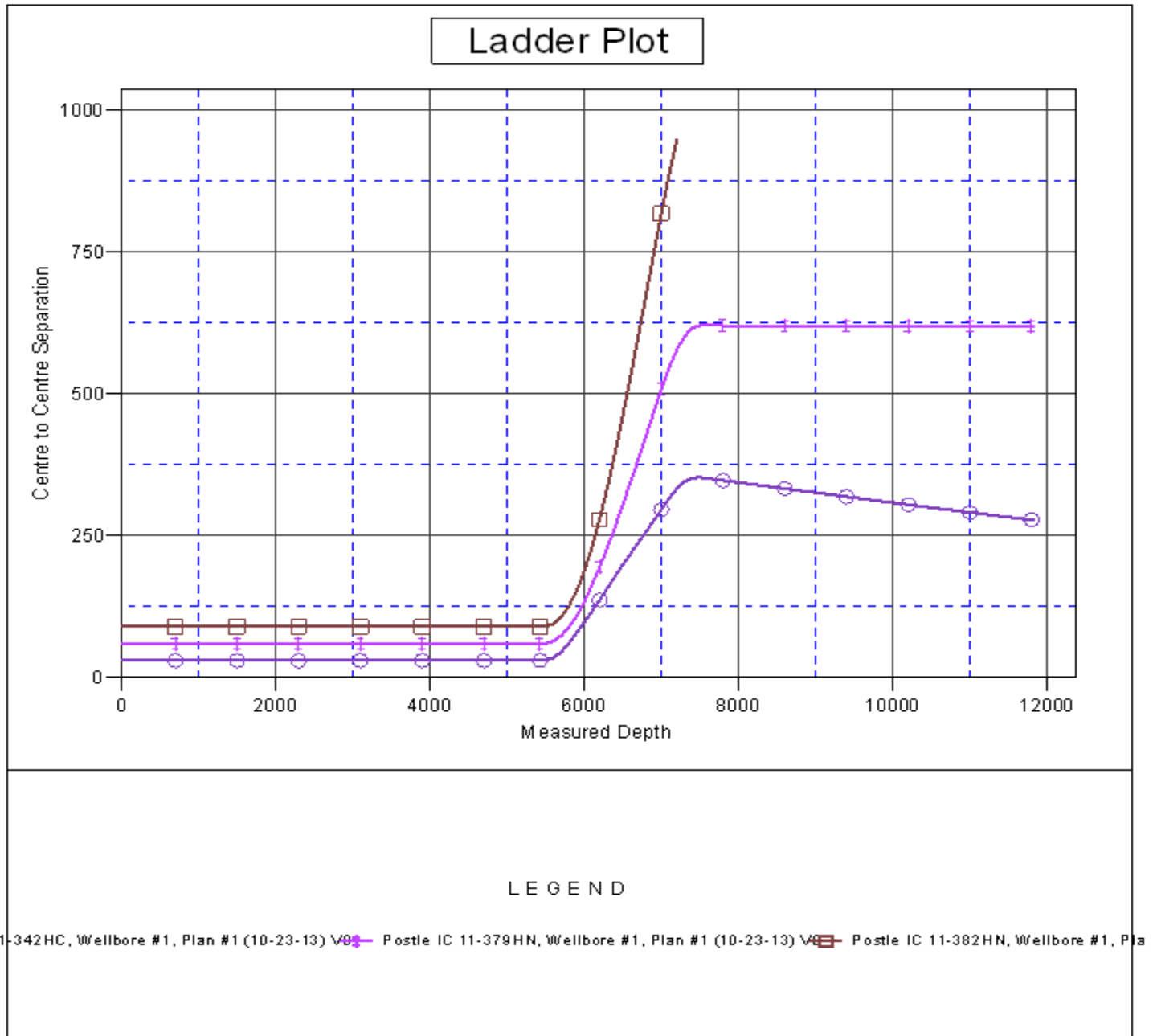
Company:	Great Western	Local Co-ordinate Reference:	Well Postle IC 11-302HN
Project:	Sec.12-T3N-R68W	TVD Reference:	WELL @ 4941.6ft (RKB - 16.5')
Reference Site:	Postle East Pad Sec.12-T3N-R68W	MD Reference:	WELL @ 4941.6ft (RKB - 16.5')
Site Error:	0.0ft	North Reference:	True
Reference Well:	Postle IC 11-302HN	Survey Calculation Method:	Minimum Curvature
Well Error:	0.0ft	Output errors are at	2.00 sigma
Reference Wellbore	Wellbore #1	Database:	Landmark
Reference Design:	Plan #1 (10-23-13)	Offset TVD Reference:	Offset Datum

Offset Design Postle East Pad Sec.12-T3N-R68W - Postle IC 11-382HN - Wellbore #1 - Plan #1 (10-23-13)												Offset Site Error:	0.0 ft
Survey Program: 0-NS-GYRO-MS, 7215-MWD												Offset Well Error:	0.0 ft
Reference		Offset		Semi Major Axis			Distance						
Measured Depth (ft)	Vertical Depth (ft)	Measured Depth (ft)	Vertical Depth (ft)	Reference (ft)	Offset (ft)	Highside Toolface (°)	Offset Wellbore Centre +N/-S (ft)	+E/-W (ft)	Between Centres (ft)	Between Ellipses (ft)	Minimum Separation (ft)	Separation Factor	Warning
5,200.0	5,200.0	5,200.0	5,200.0	13.7	13.7	-179.64	-90.0	-0.6	90.0	62.6	27.34	3.291	
5,300.0	5,300.0	5,300.0	5,300.0	13.9	13.9	-179.64	-90.0	-0.6	90.0	62.1	27.87	3.229	
5,400.0	5,400.0	5,400.0	5,400.0	14.2	14.2	-179.64	-90.0	-0.6	90.0	61.6	28.40	3.168 CC	
5,427.9	5,427.9	5,427.9	5,427.9	14.3	14.3	-145.66	-90.0	-0.6	90.1	61.5	28.55	3.155 ES	
5,500.0	5,500.0	5,500.0	5,500.0	14.5	14.5	-145.85	-90.0	-0.6	90.5	61.6	28.92	3.131 SF	
5,600.0	5,599.8	5,599.8	5,599.8	14.7	14.7	-147.59	-90.0	-0.6	95.0	65.7	29.37	3.236	
5,700.0	5,699.3	5,695.3	5,695.3	14.9	14.9	-149.42	-91.9	-2.3	106.0	76.4	29.61	3.581	
5,800.0	5,798.0	5,789.2	5,788.8	15.2	14.9	-150.15	-97.5	-7.4	125.4	95.7	29.69	4.224	
5,900.0	5,895.7	5,880.5	5,879.3	15.4	14.9	-150.03	-106.4	-15.6	152.7	123.0	29.70	5.142	
6,000.0	5,992.1	5,968.4	5,965.8	15.7	14.9	-149.39	-118.3	-26.5	187.8	158.1	29.68	6.327	
6,100.0	6,087.0	6,052.3	6,047.4	15.9	14.9	-148.46	-132.6	-39.6	230.1	200.4	29.62	7.767	
6,200.0	6,180.0	6,131.6	6,123.6	16.2	14.9	-147.36	-148.8	-54.3	279.2	249.7	29.53	9.454	
6,300.0	6,270.9	6,206.0	6,194.1	16.5	15.0	-146.15	-166.2	-70.2	334.7	305.3	29.43	11.372	
6,400.0	6,359.5	6,275.1	6,258.7	16.7	15.0	-144.82	-184.3	-86.9	396.1	366.8	29.33	13.505	
6,500.0	6,445.8	6,339.3	6,317.8	17.0	15.0	-144.10	-202.8	-103.8	462.5	433.0	29.42	15.721	
6,600.0	6,531.8	6,400.0	6,372.8	17.3	15.1	-144.00	-221.8	-121.1	531.0	501.3	29.72	17.867	
6,700.0	6,617.7	6,458.7	6,425.1	17.6	15.1	-143.72	-241.5	-139.1	601.3	571.2	30.05	20.010	
6,800.0	6,703.6	6,514.4	6,473.8	17.9	15.2	-143.33	-261.3	-157.2	673.1	642.7	30.39	22.150	
6,900.0	6,789.5	6,579.5	6,530.2	18.3	15.2	-142.84	-285.4	-179.3	746.0	715.2	30.75	24.261	
7,000.0	6,874.0	6,648.4	6,589.7	18.6	15.3	-123.41	-310.9	-202.6	818.3	786.3	32.07	25.518	
7,100.0	6,950.1	6,718.1	6,650.0	18.9	15.4	-103.23	-336.7	-226.3	886.7	853.1	33.53	26.442	
7,200.0	7,013.6	6,785.3	6,708.1	19.2	15.4	-90.64	-361.6	-249.0	948.8	914.7	34.12	27.807	

Company:	Great Western	Local Co-ordinate Reference:	Well Postle IC 11-302HN
Project:	Sec.12-T3N-R68W	TVD Reference:	WELL @ 4941.6ft (RKB - 16.5')
Reference Site:	Postle East Pad Sec.12-T3N-R68W	MD Reference:	WELL @ 4941.6ft (RKB - 16.5')
Site Error:	0.0ft	North Reference:	True
Reference Well:	Postle IC 11-302HN	Survey Calculation Method:	Minimum Curvature
Well Error:	0.0ft	Output errors are at	2.00 sigma
Reference Wellbore	Wellbore #1	Database:	Landmark
Reference Design:	Plan #1 (10-23-13)	Offset TVD Reference:	Offset Datum

Reference Depths are relative to WELL @ 4941.6ft (RKB - 16.5')
Offset Depths are relative to Offset Datum
Central Meridian is -105.500000 °

Coordinates are relative to: Postle IC 11-302HN
Coordinate System is US State Plane 1983, Colorado Northern Zone
Grid Convergence at Surface is: 0.35°



Company:	Great Western	Local Co-ordinate Reference:	Well Postle IC 11-302HN
Project:	Sec.12-T3N-R68W	TVD Reference:	WELL @ 4941.6ft (RKB - 16.5')
Reference Site:	Postle East Pad Sec.12-T3N-R68W	MD Reference:	WELL @ 4941.6ft (RKB - 16.5')
Site Error:	0.0ft	North Reference:	True
Reference Well:	Postle IC 11-302HN	Survey Calculation Method:	Minimum Curvature
Well Error:	0.0ft	Output errors are at	2.00 sigma
Reference Wellbore	Wellbore #1	Database:	Landmark
Reference Design:	Plan #1 (10-23-13)	Offset TVD Reference:	Offset Datum

Reference Depths are relative to WELL @ 4941.6ft (RKB - 16.5')
Offset Depths are relative to Offset Datum
Central Meridian is -105.500000 °

Coordinates are relative to: Postle IC 11-302HN
Coordinate System is US State Plane 1983, Colorado Northern Zone
Grid Convergence at Surface is: 0.35°

