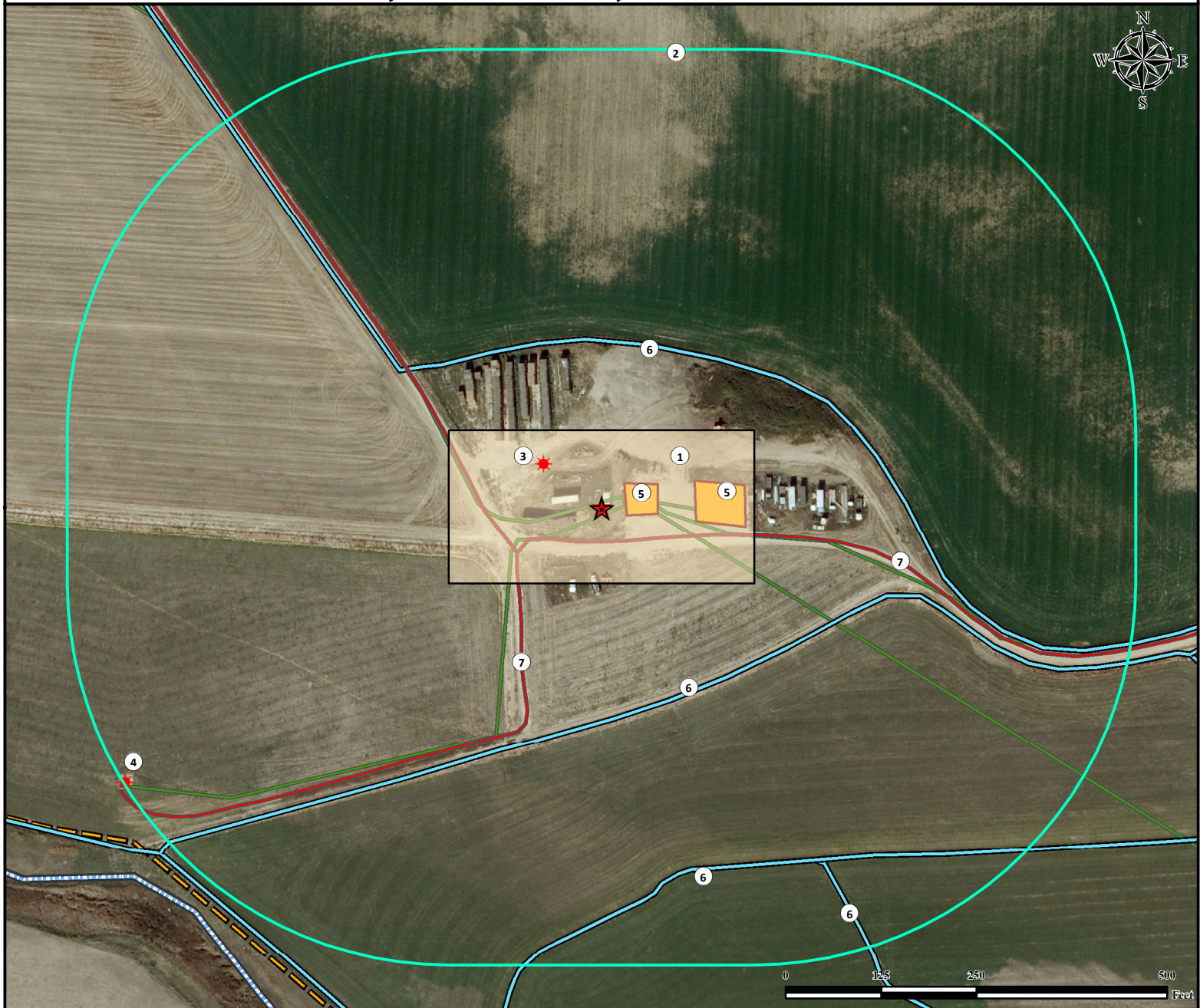


Location Drawing

ELLIOTT 32N-18HZ FACILITY

SW¼ NE¼ & SE¼ NE¼ SECTION 18, TOWNSHIP 3 NORTH, RANGE 67 WEST OF THE 6TH PRINCIPAL MERIDIAN



- | | |
|--|---|
| 1. Proposed Facility ELLIOTT 32N-18HZ. | 5. Existing Facilities are $\pm 32'$ E and $\pm 123'$ E. |
| 2. 500' Radius. | 6. Ditches are $\pm 217'$ N, $\pm 267'$ SE, $\pm 489'$ SE, $\pm 540'$ SE. |
| 3. Existing Well ELLIOTT KARL UNIT 1 is $\pm 95'$ NW. | 7. Private Roads are $\pm 45'$ S and $\pm 126'$ SW. |
| 4. Existing Well HSR ELLIOT FARMS 7-18 is $\pm 720'$ SW. | |

Legend

- | | | |
|---------------|-------------------|--------------------|
| Existing Well | Proposed Facility | Facility Enclosure |
| Ditch | 500' Radius | Private Road |

Reference Location

** All measurements are made from Reference Point **

Lat: 40.228784° Long: -104.928053° (NAD83)
Elevation: 4849 Feet

FNL: 1623' FEL: 1338'

Nearest Building Unit: >1000' NW



Use our resources to find yours!
www.petro-fs.com
(303) 928-7128

Field Date: 05/31/2013
Drafting Date: 08/27/2013
Drafter: JLF
Revision: 1

Surface Use: Irrigated Crop

Data Sources:
- Aerial courtesy of Anadarko Petroleum Corporation (2010)

Prepared for:

KERR-MCGEE OIL & GAS ONSHORE LP

