

T10N, R58W, 6th P.M.

WHITING OIL & GAS CORP.

Well location, RAZOR FEDERAL #12G-1309A  
(SURFACE LOCATION), located as shown in the SW  
1/4 NE 1/4 of Section 12, T10N, R58W, 6th P.M.,  
Weld County, Colorado.

### BASIS OF ELEVATION

SPOT ELEVATION LOCATED AT THE NORTHEAST CORNER OF  
SECTION 15, T9N, R58W, 6th P.M. TAKEN FROM THE  
GATEHOOK SPRING, QUADRANGLE, COLORADO, WELD COUNTY,  
7.5 MINUTE QUAD (TOPOGRAPHIC MAP) PUBLISHED BY THE  
UNITED STATES DEPARTMENT OF THE INTERIOR, GEOLOGICAL  
SURVEY. SAID ELEVATION IS MARKED AS BEING 4679 FEET.

### BASIS OF BEARINGS

BASIS OF BEARINGS IS A G.P.S. OBSERVATION.



SCALE

### CERTIFICATE

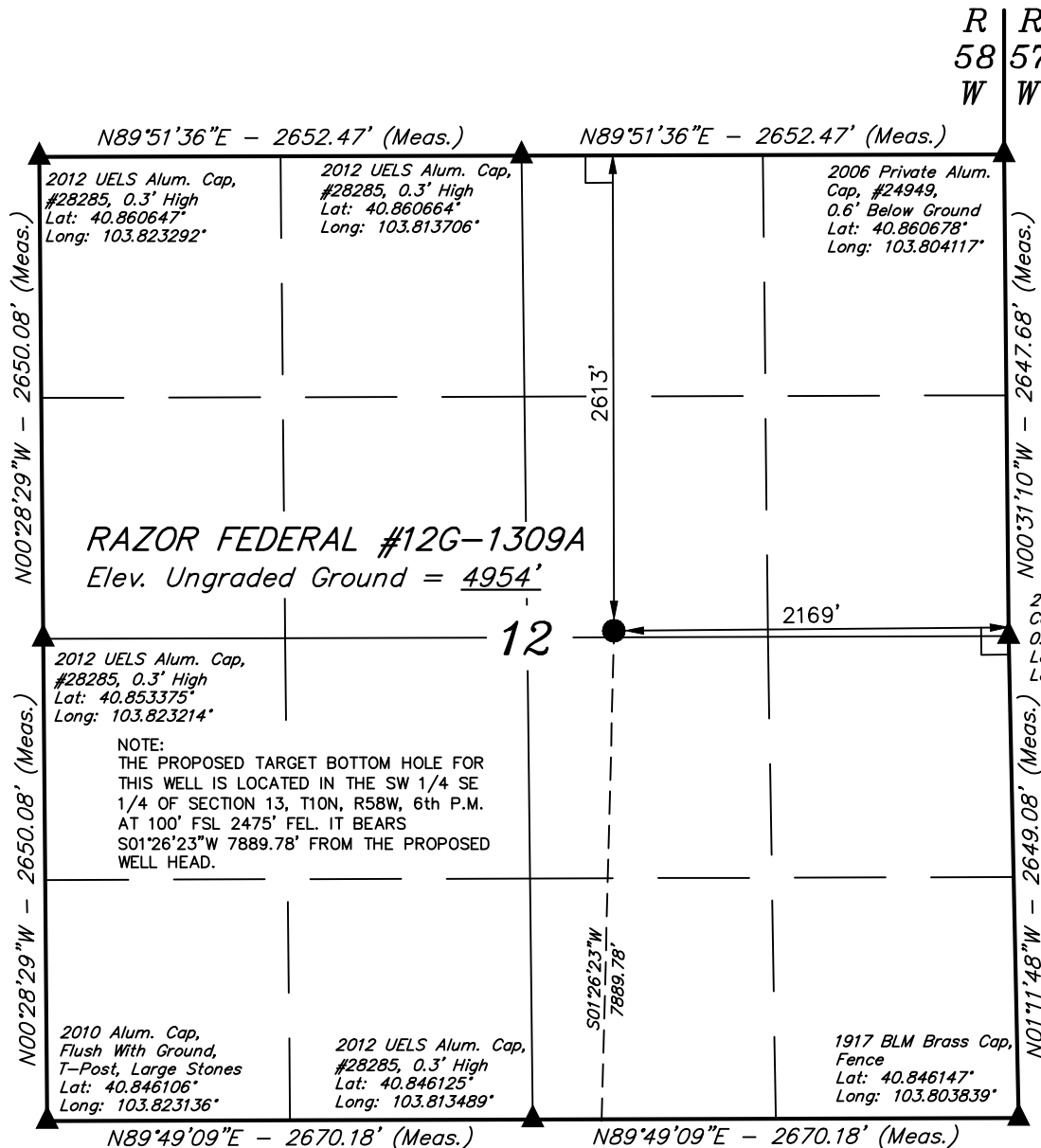
THIS IS TO CERTIFY THAT THE ABOVE PLAT WAS PREPARED FROM  
FIELD NOTES OF ACTUAL SURVEYS MADE BY ME OR UNDER MY  
SUPERVISION AND THAT THE SAME ARE TRUE AND CORRECT TO THE  
BEST OF MY KNOWLEDGE AND BELIEF.

*[Signature]*  
REGISTERED LAND SURVEYOR  
REGISTRATION NO. 28285  
STATE OF COLORADO

REV: 07-09-13 B.D.H.

**UINTAH ENGINEERING & LAND SURVEYING**  
85 SOUTH 200 EAST - VERNAL, UTAH 84078  
(435) 789-1017

SCALE 1" = 1000'	DATE SURVEYED: 05-02-13	DATE DRAWN: 05-07-13
PARTY J.H. C.M. H.K.W.	REFERENCES G.L.O. PLAT	
WEATHER COOL	FILE WHITING OIL & GAS CORP.	



### LEGEND:

- └─┘ = 90° SYMBOL
- = PROPOSED WELL HEAD.
- ▲ = SECTION CORNERS LOCATED.

Target  
Bottom  
Hole

PDOP = 1.2

NAD 83 (SURFACE LOCATION)
LATITUDE = 40°51'12.58" (40.853494)
LONGITUDE = 103°48'42.75" (103.811875)
NAD 27 (SURFACE LOCATION)
LATITUDE = 40°51'12.64" (40.853511)
LONGITUDE = 103°48'40.94" (103.811372)

*T10N, R58W, 6th P.M.*

WHITING OIL & GAS CORP.

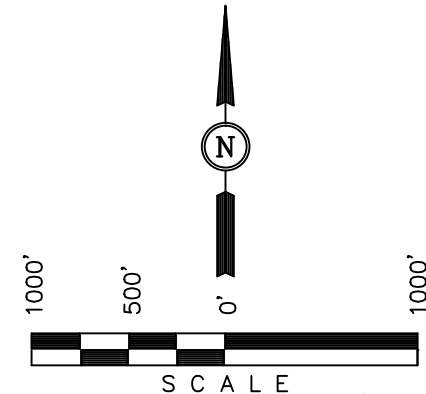
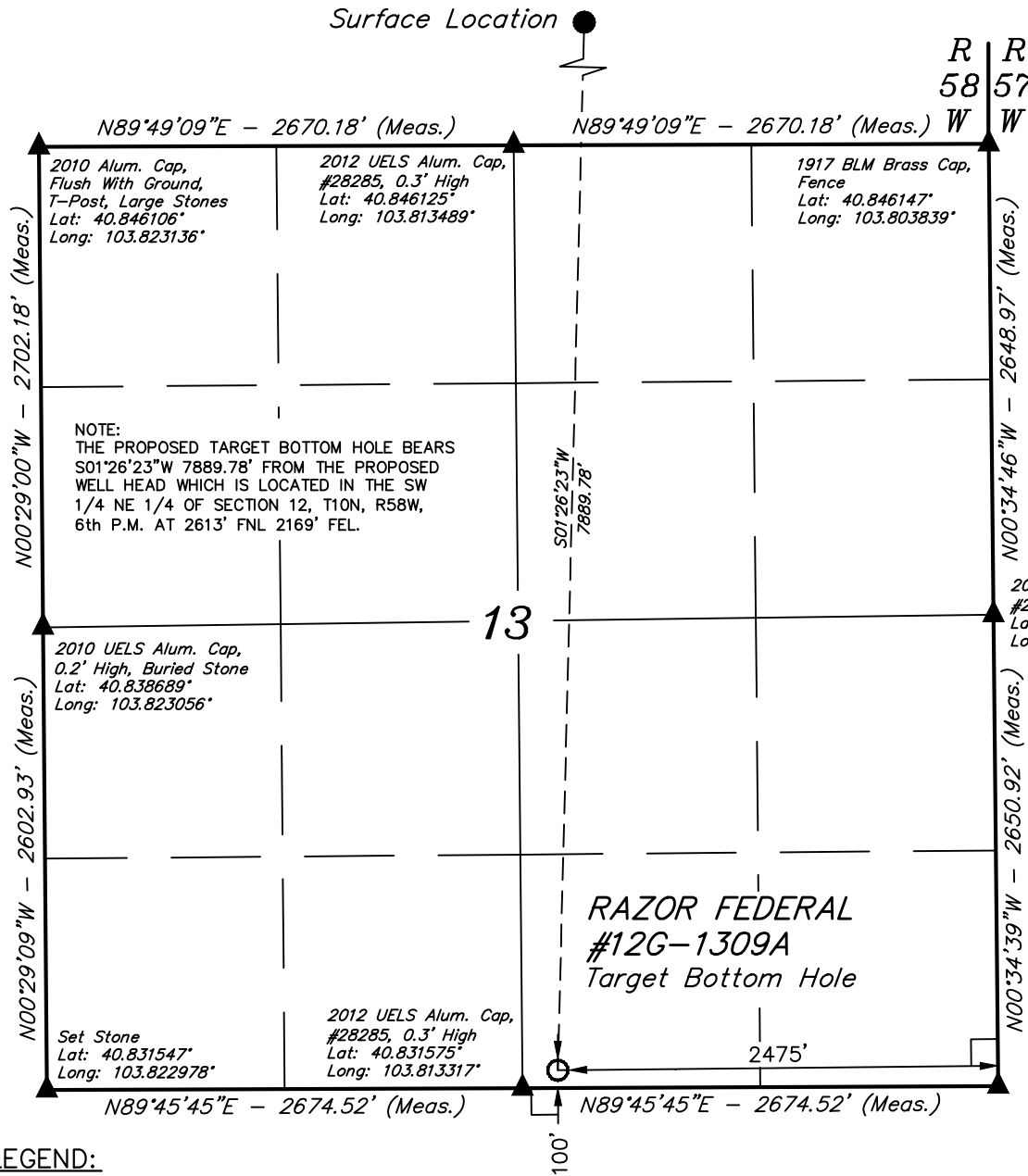
Well location, RAZOR FEDERAL #12G-1309A (TARGET BOTTOM HOLE), located as shown in the SW 1/4 SE 1/4 of Section 13, T10N, R58W, 6th P.M., Weld County, Colorado.

BASIS OF ELEVATION

SPOT ELEVATION LOCATED AT THE NORTHEAST CORNER OF SECTION 15, T9N, R58W, 6th P.M. TAKEN FROM THE GATEHOOK SPRING, QUADRANGLE, COLORADO, WELD COUNTY, 7.5 MINUTE QUAD (TOPOGRAPHIC MAP) PUBLISHED BY THE UNITED STATES DEPARTMENT OF THE INTERIOR, GEOLOGICAL SURVEY. SAID ELEVATION IS MARKED AS BEING 4679 FEET.

BASIS OF BEARINGS

BASIS OF BEARINGS IS A G.P.S. OBSERVATION.



CERTIFICATE

THIS IS TO CERTIFY THAT THE ABOVE PLAT WAS PREPARED FROM FIELD NOTES OF ACTUAL SURVEYS MADE BY ME OR UNDER MY SUPERVISION AND THAT THE SAME ARE TRUE AND CORRECT TO THE BEST OF MY KNOWLEDGE AND BELIEF.

REGISTERED LAND SURVEYOR  
REGISTRATION NO. 28285  
STATE OF COLORADO

2011 UELS Alum. Cap,  
0.6' Below Ground  
Lat: 40.831603°  
Long: 103.803653°

UINTAH ENGINEERING & LAND SURVEYING  
85 SOUTH 200 EAST - VERNAL, UTAH 84078  
(435) 789-1017

LEGEND:

- └─┘ = 90° SYMBOL
- = PROPOSED WELL HEAD.
- ▲ = SECTION CORNERS LOCATED.

NAD 83 (TARGET BOTTOM HOLE)
LATITUDE = 40°49'54.67" (40.831853)
LONGITUDE = 103°48'45.36" (103.812600)
NAD 27 (TARGET BOTTOM HOLE)
LATITUDE = 40°49'54.72" (40.831867)
LONGITUDE = 103°48'43.55" (103.812097)

SCALE 1" = 1000'	DATE SURVEYED: 05-02-13	DATE DRAWN: 05-07-13
PARTY J.H. C.M. H.K.W.	REFERENCES G.L.O. PLAT	
WEATHER COOL	FILE WHITING OIL & GAS CORP.	