

The Road to Excellence Starts with Safety

Sold To #: 303331	Ship To #: 3100336	Quote #:	Sales Order #: 900775305
Customer: KOCH EXPLORATION COMPANY L L C	Customer Rep: Douglas, Howard		
Well Name: Wyatt	Well #: 25-43	API/UWI #:	
Field:	City (SAP): MEEKER	County/Parish: Rio Blanco	State: Colorado
Contractor: Capstar	Rig/Platform Name/Num: 311		
Job Purpose: Cement Production Casing			
Well Type: Development Well	Job Type: Cement Production Casing		
Sales Person: KRUGER, ROBERT	Srv Supervisor: FUCHS, ERIC	MBU ID Emp #: 471203	

Job Personnel

HES Emp Name	Exp Hrs	Emp #	HES Emp Name	Exp Hrs	Emp #	HES Emp Name	Exp Hrs	Emp #
FUCHS, ERIC James	10.5	471203	GILES, JAMES W	10.5	522124	MCKEE, RALPH R	8.5	259268
STINCHFIELD, ZACHARIAH Scott	8.5	524221						

Equipment

HES Unit #	Distance-1 way	HES Unit #	Distance-1 way	HES Unit #	Distance-1 way	HES Unit #	Distance-1 way
10872113	120 mile	11071585	120 mile	11287531	120 mile	11338215	120 mile
11398321	120 mile	11526496	120 mile				

Job Hours

Date	On Location Hours	Operating Hours	Date	On Location Hours	Operating Hours	Date	On Location Hours	Operating Hours
TOTAL								

Total is the sum of each column separately

Job

Formation Name	Formation Depth (MD)	Top	Bottom	Form Type	Job depth MD	Job Depth TVD	Water Depth	Perforation Depth (MD)	From	To
				BHST	3476. ft	3500. ft				
				124 degF						

Job Times

Date	Time	Time Zone
26 - Sep - 2013	23:00	MST
27 - Sep - 2013	03:00	MST
27 - Sep - 2013	11:30	MST
27 - Sep - 2013	13:00	MST
27 - Sep - 2013	14:30	MST

Well Data

Description	New / Used	Max pressure psig	Size in	ID in	Weight lbm/ft	Thread	Grade	Top MD ft	Bottom MD ft	Top TVD ft	Bottom TVD ft
Production OH				8.75				1100.	3700.		
Production Casing	Unknown		7.	6.276	26.		I-80	.	3700.		
Surface Casing	Unknown		9.625	8.921	36.		J-55	.	1176.	.	

Tools and Accessories

Type	Size	Qty	Make	Depth	Type	Size	Qty	Make	Depth	Type	Size	Qty	Make
Guide Shoe					Packer					Top Plug			
Float Shoe					Bridge Plug					Bottom Plug			
Float Collar					Retainer					SSR plug set			
Insert Float										Plug Container			
Stage Tool										Centralizers			

Miscellaneous Materials

Gelling Agt	Conc	Surfactant	Conc	Acid Type	Qty	Conc	%
Treatment Fld	Conc	Inhibitor	Conc	Sand Type	Size	Qty	

Fluid Data

Stage/Plug #: 1	Fluid Name	Qty	Qty uom	Mixing Density lbm/gal	Yield ft ³ /sk	Mix Fluid Gal/sk	Rate bbl/min	Total Mix Fluid Gal/sk
Fluid #	Stage Type							

Stage/Plug #: 1										
Fluid #	Stage Type	Fluid Name	Qty	Qty uom	Mixing Density lbm/gal	Yield ft ³ /sk	Mix Fluid Gal/sk	Rate bbl/min	Total Mix Fluid Gal/sk	
1	MUD FLUSH III	MUD FLUSH III - SBM (528788)	20.00	bbl	8.4	.0	.0	4.0		
2	EconoCem	ECONOCEM (TM) SYSTEM (452992)	200.0	sacks	11.	3.27	20.11	4.0	20.11	
6 %		SALT, 100 LB BAG (100003652)								
0.35 %		VERSASET, 55 LB SK (101376573)								
3	BondCem	BONDCEM (TM) SYSTEM (452977)	180.0	sacks	14.8	1.33	6.4	4.0	6.4	
4	Displacement		131.00	bbl	8.34	.0	.0	6.0		
Calculated Values		Pressures		Volumes						
Displacement		Shut In: Instant		Lost Returns		Cement Slurry		Pad		
Top Of Cement		5 Min		Cement Returns		Actual Displacement		Treatment		
Frac Gradient		15 Min		Spacers		Load and Breakdown		Total Job		
Rates										
Circulating		Mixing		Displacement		Avg. Job				
Cement Left In Pipe	Amount	40 ft	Reason	Shoe Joint						
Frac Ring # 1 @	ID	Frac ring # 2 @	ID	Frac Ring # 3 @	ID	Frac Ring # 4 @	ID			
The Information Stated Herein Is Correct				Customer Representative Signature						

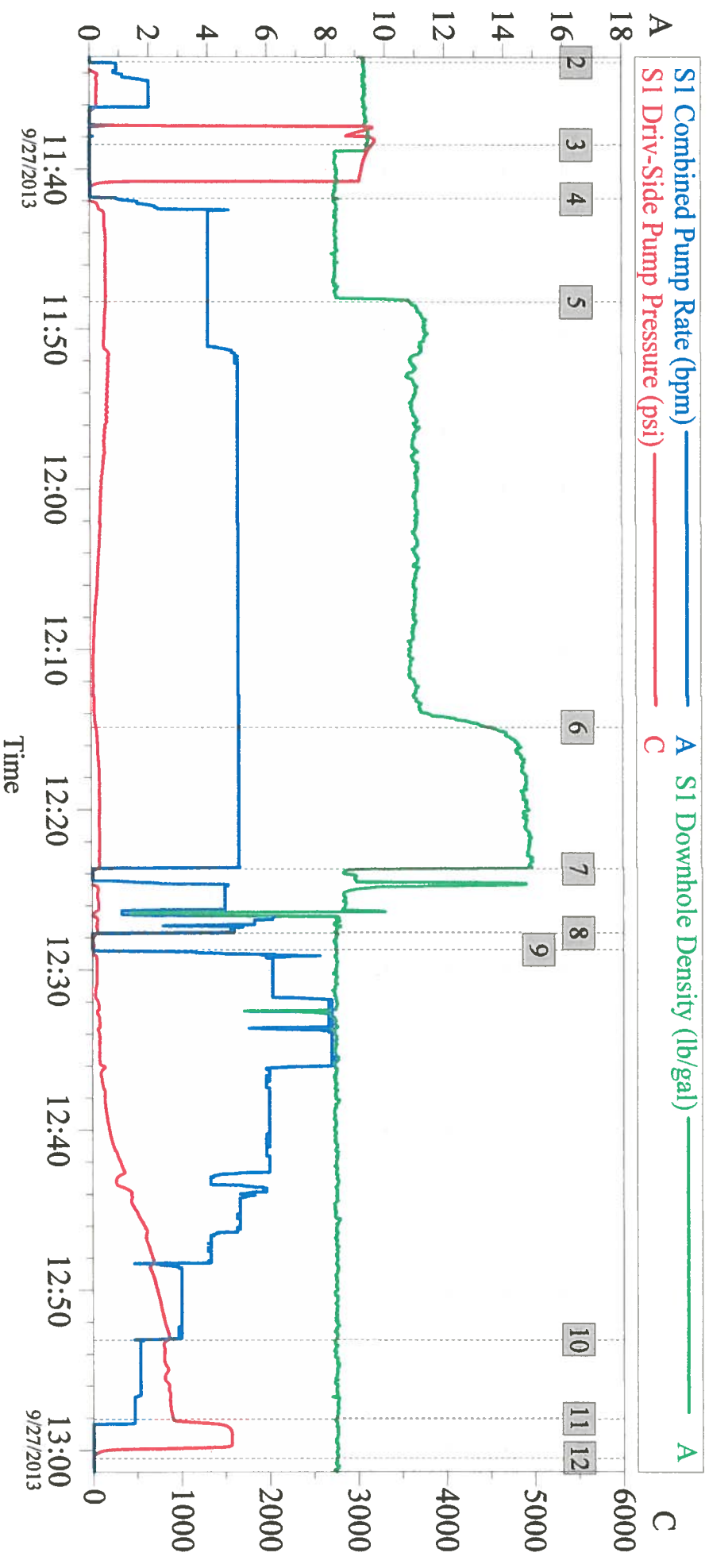
The Road to Excellence Starts with Safety

Sold To #: 303331		Ship To #: 3100336		Quote #:		Sales Order #: 900775305	
Customer: KOCH EXPLORATION COMPANY L L C				Customer Rep: Douglas, Howard			
Well Name: Wyatt			Well #: 25-43		API/UWI #:		
Field:		City (SAP): MEEKER		County/Parish: Rio Blanco		State: Colorado	
Legal Description:							
Lat: N 0 deg. OR N 0 deg. 0 min. 0 secs.				Long: E 0 deg. OR E 0 deg. 0 min. 0 secs.			
Contractor: Capstar			Rig/Platform Name/Num: 311				
Job Purpose: Cement Production Casing						Ticket Amount:	
Well Type: Development Well			Job Type: Cement Production Casing				
Sales Person: KRUGER, ROBERT			Srvc Supervisor: FUCHS, ERIC			MBU ID Emp #: 471203	

Activity Description	Date/Time	Cht #	Rate bbl/min	Volume bbl		Pressure psig		Comments
				Stage	Total	Tubing	Casing	
Call Out	09/26/2013 23:00							CREW IS CALLED OUT
Pre-Convoy Safety Meeting	09/27/2013 00:45							CREW HAS PRE CONVOY SAFETY MEETNG
Depart from Service Center or Other Site	09/27/2013 01:00							CREW LEAVES THE YARD
Arrive At Loc	09/27/2013 03:00							CREW ARRIVES AT LOCATION
Assessment Of Location Safety Meeting	09/27/2013 03:15							CREW ASSESSES LOCATION
Comment	09/27/2013 03:30							COMPANY MAN WANTS US TO WAIT OFF LOCATION WHILE THE RIG RUNS CASING
Casing on Bottom	09/27/2013 09:00							RIG HAS CASING ON BOTTOM OF HOLE
Pre-Rig Up Safety Meeting	09/27/2013 09:15							CREW HAS PRE RIG UP SAFETY MEETING
Rig-Up Equipment	09/27/2013 09:30							CREW STARTS RIGGING UP
Rig-Up Completed	09/27/2013 10:45							CREW DONE RIGGING UP
Pre-Job Safety Meeting	09/27/2013 11:00							CREW HAS PRE JOB SAFETY MEETING WITH RIG CREW AND COMPANY REP
Other	09/27/2013 11:33		3	5	5		38.0	FILL LINES WITH 5 BBLS FRESH WATER
Test Lines	09/27/2013 11:38						3187.0	TEST LINES TO 3000 PSI
Pump Spacer	09/27/2013 11:41		5	20	25		21.0	PUMP 20 BBLS MUD FLUSH III

Activity Description	Date/Time	Cht #	Rate bbl/min	Volume bbl		Pressure psig		Comments
				Stage	Total	Tubing	Casing	
Pump Lead Cement	09/27/2013 11:48		5	116	141		179.0	PUMP 116 BBLS 200 SKS LEAD CEMENT 11 # 3.27 YIELD 20.11 GAL/SK
Pump Tail Cement	09/27/2013 12:14		5	42	183		48.0	PUMP 42 BBLS 180 SKS TAIL CEMENT 14.8 # 1.33 YIELD 6.4 GAL/SK
Shutdown	09/27/2013 12:23						39.0	SHUTDOWN AND WASH PUMPS AND LINES TO THE PIT
Drop Plug	09/27/2013 12:27						47.0	DROP PLUG
Pump Displacement	09/27/2013 12:28		6	121	304		13.0	PUMP 131 BBLS WATER DISPLACEMENT
Slow Rate	09/27/2013 12:53		1.5	10	314		829.0	SLOW RATE TO BUMP PLUG
Bump Plug	09/27/2013 12:58						900.0	BUMP PLUG
Check Floats	09/27/2013 13:00						9.0	CHECK FLOATS GOT 1 BBLS BACK
Post-Job Safety Meeting (Pre Rig-Down)	09/27/2013 13:10							CREW HAS POST JOB SAFETY MEEING AND TALKS ABOUT THE HAZARDS OF RIGGING DOWN
Rig-Down Equipment	09/27/2013 13:20							CREW RIGS DOWN
Rig-Down Completed	09/27/2013 14:00							CREW DONE RIGGING DOWN
Pre-Convoy Safety Meeting	09/27/2013 14:15							CREW HAS PRE CONVOY SAFETY MEETING
Depart Location for Service Center or Other Site	09/27/2013 14:30							CREW LEAVES LOCATION

Koch Wyatt 25-43 SWD Job Summary Chart



Global Event Log

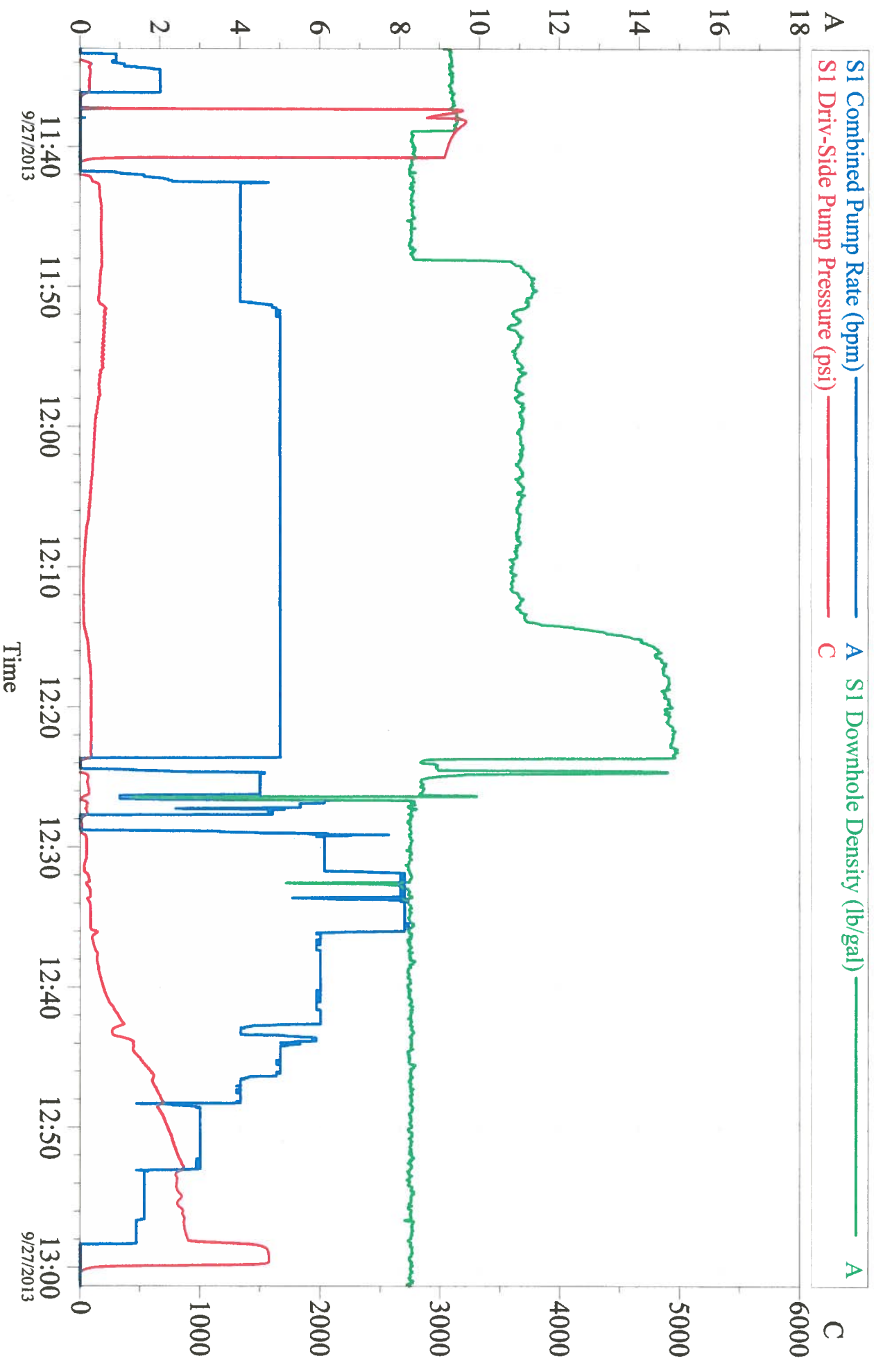
Intersection		SDPP	Intersection		SDPP	Intersection		SDPP			
2	Fill Lines	11:33:19	-38.63	3	Test Lines	11:38:29	3187	4	Pump Mud Flush III	11:41:50	-21.79
5	Pump Lead Cement	11:48:17	179.0	6	Pump Tail Cement	12:14:51	48.00	7	Shutdown	12:23:42	39.39
8	Drop Plug	12:27:41	47.71	9	Pump Displacement	12:28:44	13.00	10	Slow Rate	12:53:05	829.7
11	Bump Plug	12:58:02	900.0	12	Check Floats	13:00:29	-9.373				

Customer: Koch
Job Description: Production
service supervisor: Eric Fuchs

Job Date: 27-Sep-2013
UWI:
service operator: Jim Giles

Sales Order #: 900775305
Elite #: 10872113
service leader:

Koch Wyatt 25-43 SWD Job Summay Chart No Events

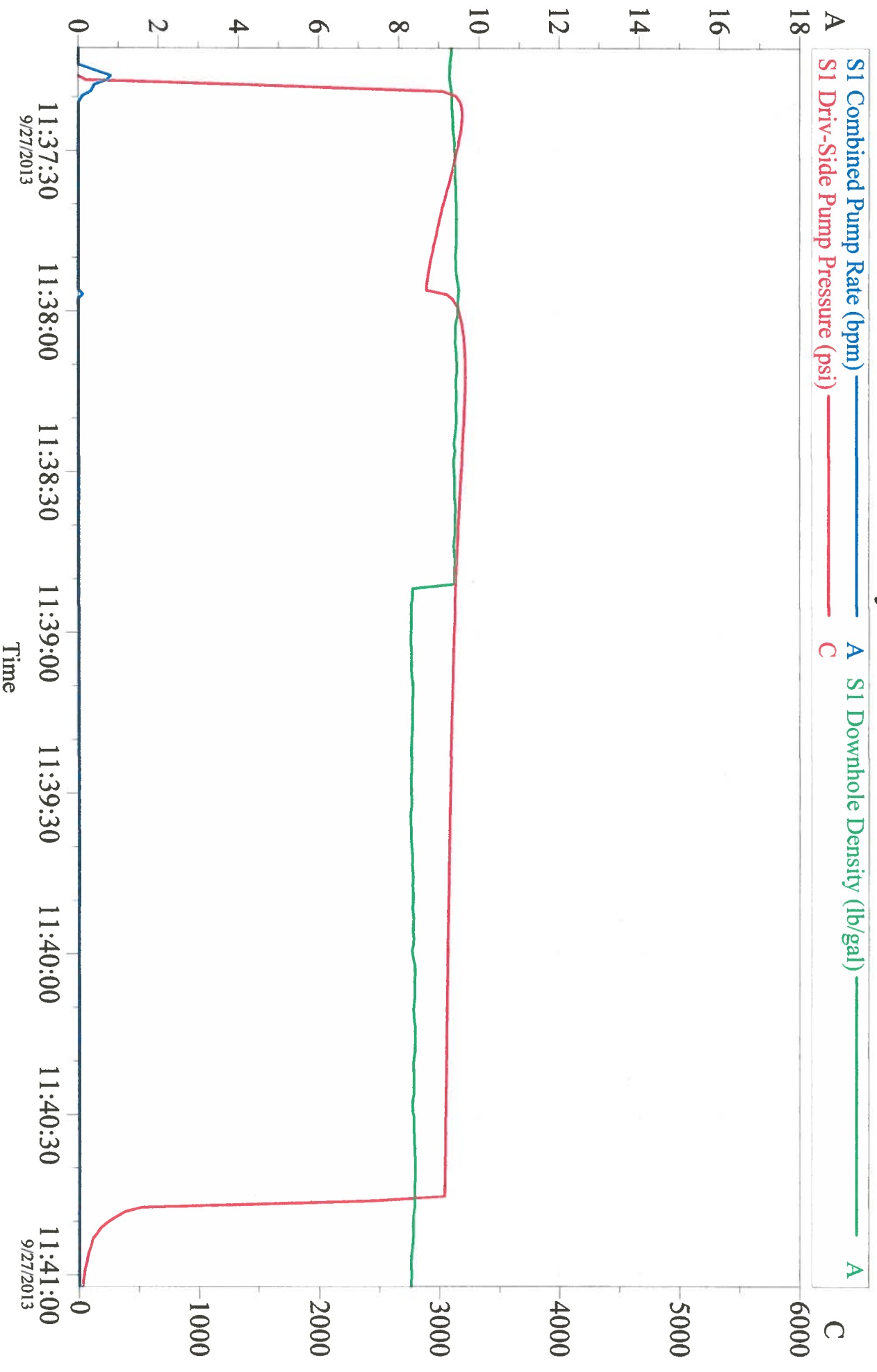


Customer: Koch
Job Description: Production
service supervisor: Eric Fuchs

Job Date: 27-Sep-2013
UWI:
service operator: Jim Giles

Sales Order #: 900775305
Elite #: 10872113
service leader:

Koch Wyatt 25-43 SWD Job Summay Chart Pressure Test



Customer: Koch
Job Description: Production
service supervisor: Eric Fuchs

Job Date: 27-Sep-2013
UWI:
service operator: Jim Giles

Sales Order #: 900775305
Elite #: 10872113
service leader: