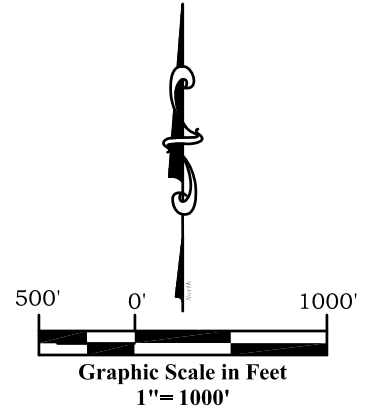
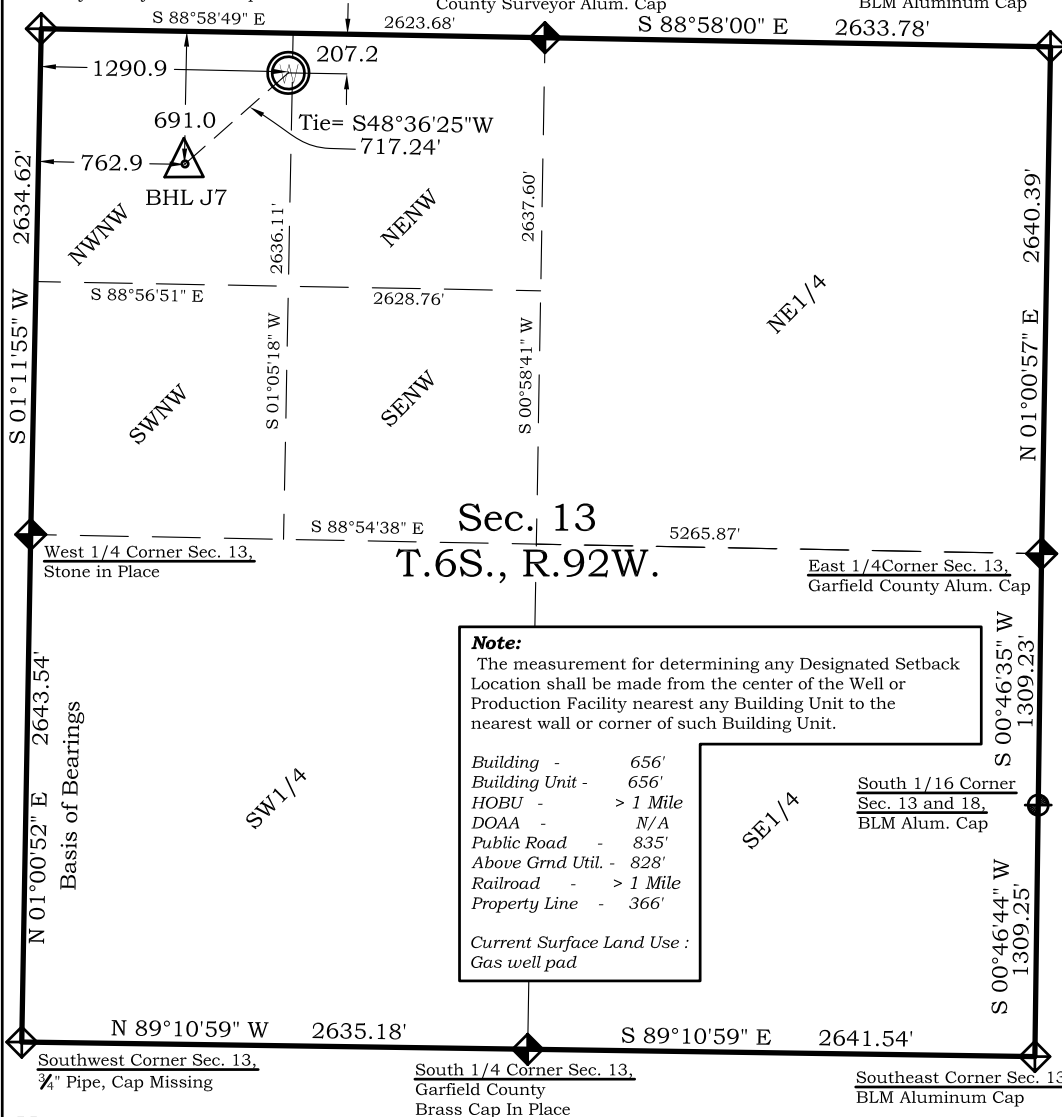


Northwest Corner Sec. 13,  
County Surveyor Alum. Cap

North 1/4 Corner Sec. 13,  
County Surveyor Alum. Cap

Northeast Corner Sec. 13,  
BLM Aluminum Cap



**Note:**

The measurement for determining any Designated Setback Location shall be made from the center of the Well or Production Facility nearest any Building Unit to the nearest wall or corner of such Building Unit.

Building - 656'  
Building Unit - 656'  
HOBV - > 1 Mile  
DOAA - N/A  
Public Road - 835'  
Above Grnd Util. - 828'  
Railroad - > 1 Mile  
Property Line - 366'

Current Surface Land Use :  
Gas well pad

**Surface: Valley Farms J7**


207' FNL  
1291' FWL  
Gnd El= 5541.5  
Pad El= 5541.5  
**NAD83**  
Lat: 39.533791746°N  
Long: 107.620552254°W  
**NAD27**  
Lat: 39.533811148°N  
Long: 107.619938638°W  
UTM 13 NORTH  
**NAD 1983**  
NORTHING  
14367735.154  
EASTING  
901512.589

**Notes:**

1. LATITUDE AND LONGITUDE COORDINATES ARE DIFFERENTIALLY CORRECTED AND BASED ON PUBLISHED NGS CONTROL STATION "WDP-5". SYSTEM: UTM ZONE: 13 NORTH DATUM: NAD 1983 (CONUS)
2. ELEVATIONS ARE BASED ON NAVD OF 1929.
3. ALL BOTTOM AND TOP HOLE LOCATIONS ARE MEASURED 90 DEGREES FROM SECTION LINE.
4. USGS QUADRANGLE MAP "SILT".
5. CURRENT SURFACE LAND USE: GAS WELL PAD.
6. PDOP AT THE TIME OF LOCATION OF SURFACE WELL = 2.4

**SURVEYOR'S CERTIFICATE**

I, SCOTT E. AIBNER, A REGISTERED LAND SURVEYOR, LICENSED UNDER THE LAWS OF THE STATE OF COLORADO, DO HEREBY CERTIFY THAT THE SURVEY SHOWN HEREON WAS PREPARED BY RIVER VALLEY SURVEY, INC. FOR Ursa OPERATING COMPANY, LLC, BY ME OR UNDER MY DIRECT SUPERVISION AND THAT THIS PLAT IS A TRUE REPRESENTATION THEREOF.

BY: 

SCOTT E. AIBNER, COLORADO REG. NO. 31143

**Legend**

- ◆ - Field Surveyed Section Corner
- ◆ - Field Surveyed Quarter Corner
- - Calculated Section Corner Location
- ◆ - Field Surveyed 1/6 Corner

**Bott. Hole: Valley Farms J7**

691' FNL  
763' FWL  
**NAD83**  
Lat: 39.532447595°N  
Long: 107.622409667°W  
**NAD27**  
Lat: 39.532467001°N  
Long: 107.621796000°W

Prepared For: Ursa Operating Company LLC  
Proposed Valley Farms J7 Well Situate in The NW1/4NW1/4  
Section 13, Township 6 South, Range 92 West of the 6 th.  
Principal Meridian, County of Garfield, State of Colorado.



**River Valley Survey, Inc.**  
110 East 3rd. Street, Suite 213  
Rifle, Colorado 81650  
Ph: 970-379-7846

Project: RVS 06001-36J

Field Date: 07-18-13

Date: 08-23-13

Scale: 1"= 1000'

Sheet: 1 of 1

**303.a Form 2**  
**Valley Farms J Pad**  
**Valley Farms J7 Location Plat**  
Section 13, Township 6 South, Range 92 West