

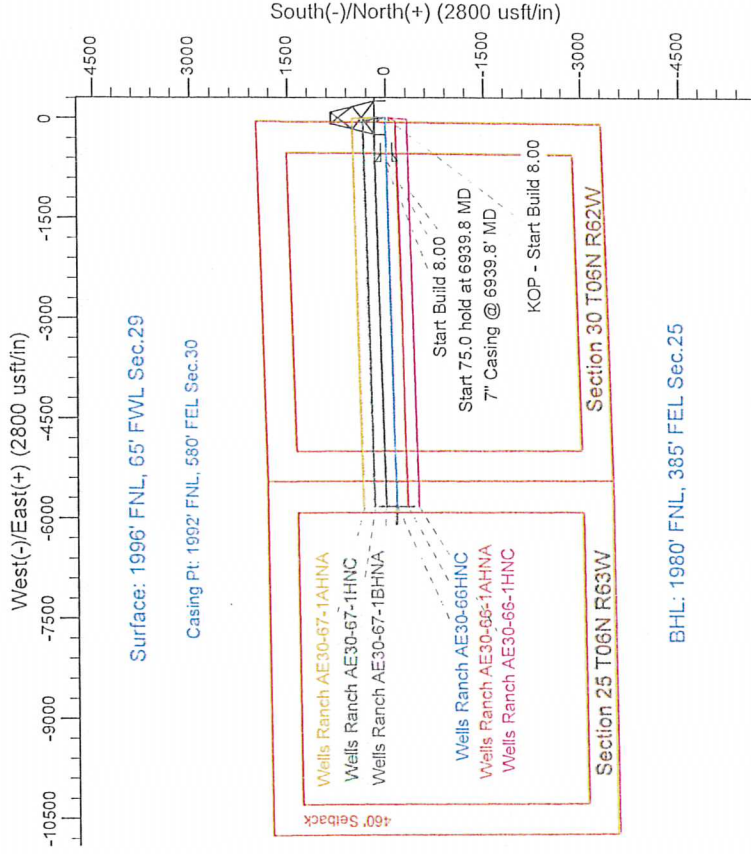
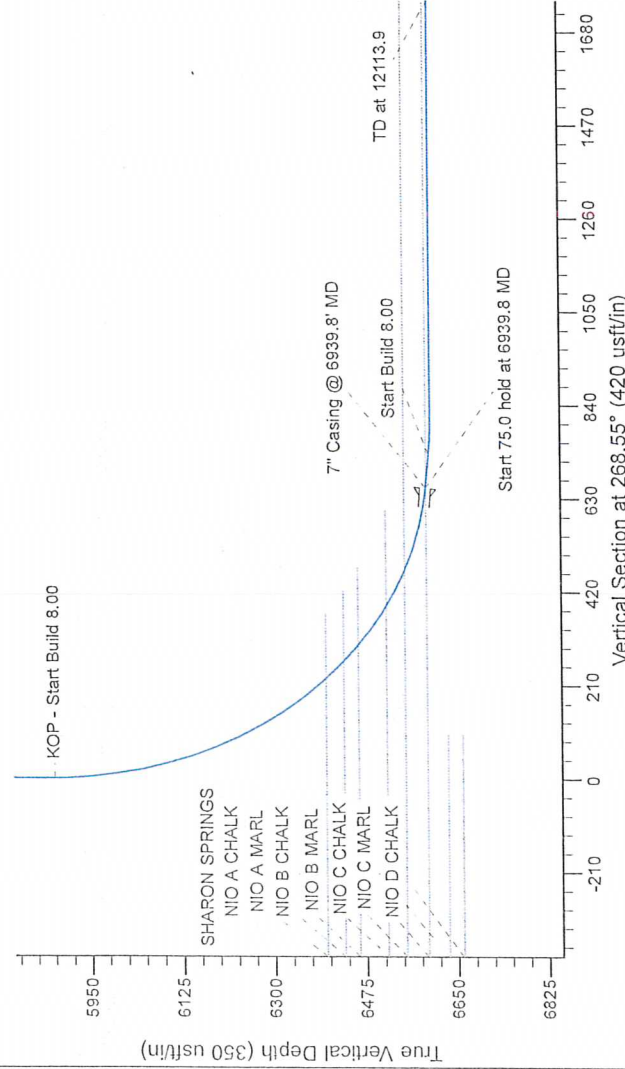
Project: Wattenberg Field  
Site: AE (Sec.23-T06N-R62W) Weld County, CO  
Well: Wells Ranch AE30-66HNC  
Wellbore: Original Drilling  
Design: APD - Rev 0

# Northern Region Drilling - Working

Geodetic System: US State Plane 1983  
Datum: North American Datum 1983  
Ellipsoid: GRS 1980  
Zone: Colorado Northern Zone  
System Datum: Mean Sea Level

## SECTION DETAILS

Sec	MD	Inc	Azi	TVD	+N/-S	+E/-W	Dleg	TFace	VSecl	Target
1	0.0	0.00	0.00	0.0	0.0	0.0	0.00	0.00	0.0	
2	5877.3	0.00	0.00	5877.3	0.0	0.0	0.00	0.00	0.0	
3	6939.8	85.00	268.55	5590.7	-16.5	-653.6	0.00	268.55	653.8	
4	7014.8	85.00	268.55	5597.3	-18.4	-728.3	0.00	0.00	728.5	
5	7077.3	90.00	268.55	6600.0	-20.0	-790.7	0.00	0.00	790.9	
6	12113.9	90.00	268.55	6600.0	-147.3	-5825.7	0.00	0.00	5827.6	Wells Ranch AE30-66HNC BHL 1980FNL, 385FEL



T G M

Azimuths to Grid North  
True North: -0.74°  
Magnetic North: 7.55°

Magnetic Field  
Strength: 52992.0snT  
Dip Angle: 67.10°  
Date: 9/20/2013  
Model: IGRF200510

WELL DETAILS: Wells Ranch AE30-66HNC			
Ground Level: 4764.0	North	East	Long
0.0	0.0	1412282.03	3318305.21
0.0	0.0	40.459480	-104.356080
Plan: APD - Rev 0 (Wells Ranch AE30-66HNC/Original Drilling)			
Created By: Shalley Jewell		Date: 11/04, September 23 2013	
Checked:		Date:	
Reviewed:		Date:	
Approved:		Date:	