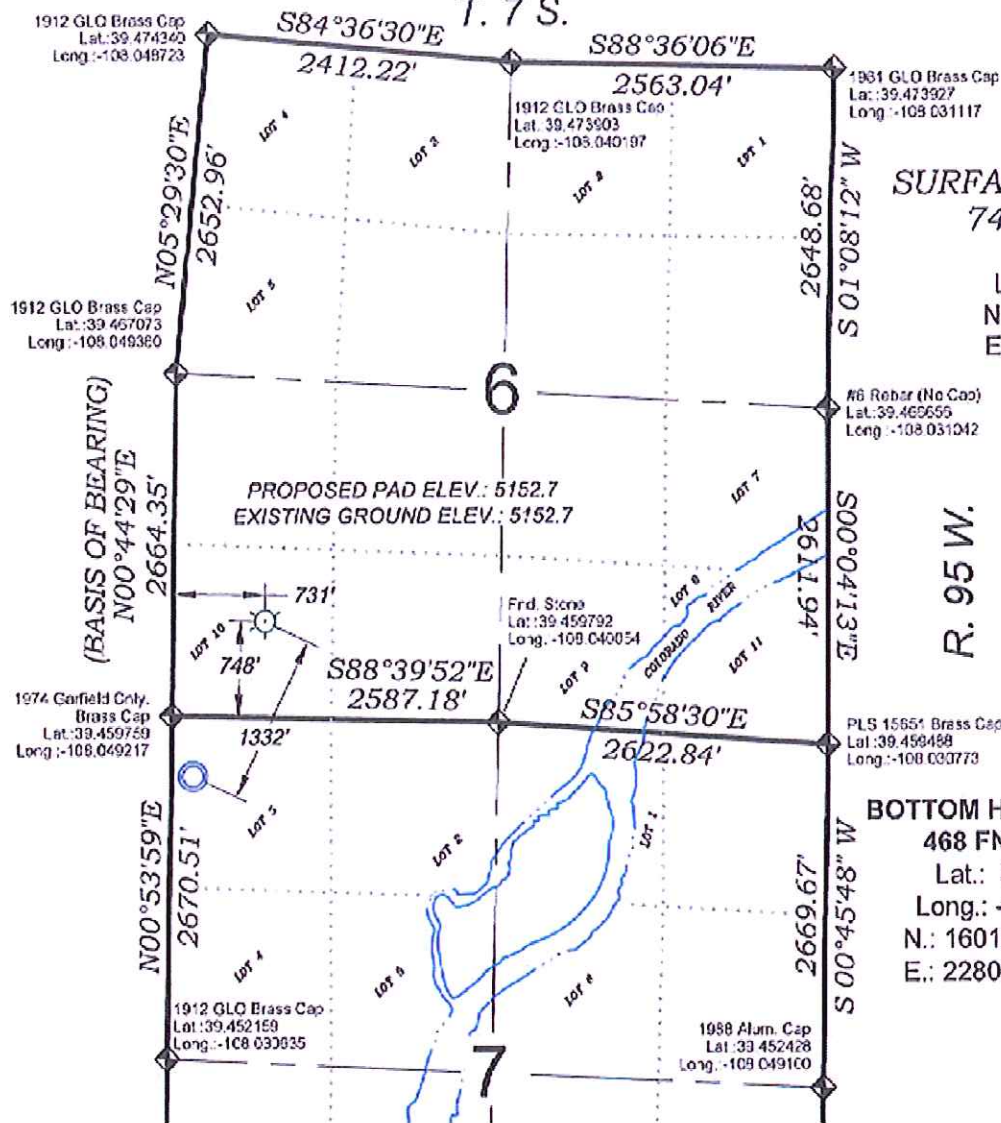


Exxon Mobile Corp. PA 411-7

T. 7 S.



SURFACE HOLE LOCATION

748 FSL, 731 FWL

Lat.: 39.461822°

Long.: -108.046667°

N.: 1603175.1 (COSP)

E.: 2281074.5 (COSP)

R. 95 W.

BOTTOM HOLE LOCATION

468 FNL, 175 FWL

Lat.: 39.458477°

Long.: -108.048577°

N.: 1601972.5 (COSP)

E.: 2280501.4 (COSP)

SEE CONSTRUCTION LAYOUT
PLAT FOR VISIBLE IMPROVEMENTS
WITHIN 400' OF THIS LOCATION

SURVEYORS STATEMENT

I, MICHAEL J. LANGHORNE, A REGISTERED LAND SURVEYOR IN THE STATE OF COLORADO DO HEREBY CERTIFY THAT THE SURVEY SHOWN HEREON WAS PREPARED UNDER MY DIRECT SUPERVISION AND HAS BEEN STAKED ON THE GROUND AS SHOWN ON THE PLAT AND CHECKING THAT THIS MAP IS A TRUE REPRESENTATION THEREOF.

MICHAEL J. LANGHORNE, COLORADO REGISTRATION NO. 36572
FOR AND ON BEHALF OF
BOOKCLIFF SURVEY SERVICES, INC.

REFERENCES

- 1) DEPENDENT RESURVEY T. 7 S., R. 95 W., 6th P.M. (GLO PLAT)
- 2) U.S.G.S. QUAD: PARACHUTE, CO

- LEGEND -

FIELD LOCATED SECTION
MONUMENTS AS DESCRIBED

FIELD SURVEYED
WELL LOCATION

CALCULATED BOTTOM
HOLE LOCATION

CALCULATED SECTION
CORNER LOCATION

NOTES

- 1) ELEVATIONS BASED ON N.A.V.D. 1988 PUBLISHED COORDINATES.
- 2) LATITUDES AND LONGITUDES ARE BASED ON NAD 83, PUBLISHED COORDINATES
- 3) STATE PLANE COORDINATES ARE BASED ON COLORADO CENTRAL ZONE, U.S. SURVEY FEET.
- 4) ELEVATION MASK SET TO 15'
- 5) GPS OPERATOR J. KIRKPATRICK, OBSERVED A PDOP 3.4 ON SURVEY POINT NUMBER 28567.
- 6) SURFACE AND BOTTOM HOLE LOCATIONS ARE MEASURED 90° FROM SECTION LINES.

WELL LOCATION PLAT Prepared for:
WPXENERGY
WPX Energy Rocky Mountain, LLC

SW1/4 SW1/4, SECTION 6
T. 7 S., R. 95 W. of the 6th. P.M.
GARFIELD COUNTY, COLORADO



SURVEY DATE: 6/19/08
MAP DATE: 1/7/13
SCALE: 1" = 1500'
PLAT: 1 of 1
PROJECT: Valley