

Encana OIL & GAS (USA) INC.

Well location, EU 8809B-24 D30 397 (SURFACE LOCATION), located as shown in LOT 4 of Section 19, T3S, R97W, 6th P.M., Rio Blanco County, Colorado.

BASIS OF ELEVATION

BENCH MARK (H79) LOCATED IN THE NE 1/4 OF SECTION 35, T4S, R98W, 6th P.M. TAKEN FROM THE BULL FORK QUADRANGLE, COLORADO, 7.5 MINUTE SERIES (TOPO GRAPHICAL MAP) PUBLISHED BY THE UNITED STATES DEPARTMENT OF THE INTERIOR, GEOLOGICAL SURVEY. SAID ELEVATION IS MARKED AS BEING 8535 FEET.

BASIS OF BEARINGS

BASIS OF BEARINGS IS A G.P.S. OBSERVATION.

Sheet 1a of 10



CERTIFICATE

THIS IS TO CERTIFY THAT THE ABOVE PLAT WAS PREPARED AND LOCATION AS SHOWN WAS STAKED ON THE GROUND FROM FIELD NOTES OF ACTUAL SURVEYS MADE BY ME OR UNDER MY SUPERVISION AND THAT THE SAME ARE TRUE AND CORRECT TO THE BEST OF MY KNOWLEDGE AND BELIEF.

REGISTERED LAND SURVEYOR
REGISTRATION NO. 17492
STATE OF COLORADO
07-03-13

REVISED: 07-03-13 T.B.

UINTAH ENGINEERING & LAND SURVEYING
85 SOUTH 200 EAST - VERNAL, UTAH 84078
(435) 789-1017

EU 8809B-24
D30 397
TARGET
BOTTOM
HOLE

1938 Brass Cap
0.5' High,
Pile of Stones
Lat: 39.767369°
Long: 108.331883°

1938 Brass Cap
0.1' High,
Pile of Stones
Lat: 39.781908°
Long: 108.332417°

LOT 1

COC065559

1938 Brass Cap
0.3' High,
Pile of Stones
Lat: 39.774642°
Long: 108.332153°

LOT 2

19

NOTE:
THE PROPOSED TARGET BOTTOM HOLE FOR
THIS WELL IS LOCATED IN THE NW 1/4 SE
1/4 OF SECTION 24, T3S, R98W, 6th P.M.
AT 2341' FSL 1391' FEL. IT BEARS
N40°33'25"W 3039.92' FROM THE PROPOSED
WELL HEAD.

LOT 3

LOT 4

COC065559

1938 Brass Cap
0.6' High
Lat: 39.767136°
Long: 108.322422°

1938 Brass Cap
2.5' High,
Pile of Stones
Lat: 39.766908°
Long: 108.312928°

EU 8809B-24 D30 397
Elev. Ungraded Ground = 7330.9'
Elev. Graded Ground = 7328.4'

LEGEND:

- └─┘ = 90° SYMBOL
- = PROPOSED WELL HEAD.
- ▲ = SECTION CORNERS LOCATED.

PDOP = 2.5

| NAD 83 (SURFACE LOCATION) | |
|---------------------------|------------------------------|
| LATITUDE | = 39°46'02.67" (39.767408) |
| LONGITUDE | = 108°19'48.15" (108.330042) |
| NAD 27 (SURFACE LOCATION) | |
| LATITUDE | = 39°46'02.77" (39.767436) |
| LONGITUDE | = 108°19'45.83" (108.329397) |

| | | |
|-------------------------|-------------------------------------|-------------------------|
| SCALE 1" = 1000' | DATE SURVEYED: 03-29-13 | DATE DRAWN: 05-07-13 |
| PARTY G.O. B.H. T.B. | REFERENCES G.L.O. PLAT | |
| WEATHER COLD | FILE Encana OIL & GAS (USA) INC. | |

T3S, R98W, 6th P.M.

Encana OIL & GAS (USA) INC.

Well location, EU 8809B-24 D30 397 (Target Bottom Hole), located as shown in the NW 1/4 SE 1/4 of Section 24, T3S, R98W, 6th P.M., Rio Blanco County, Colorado.

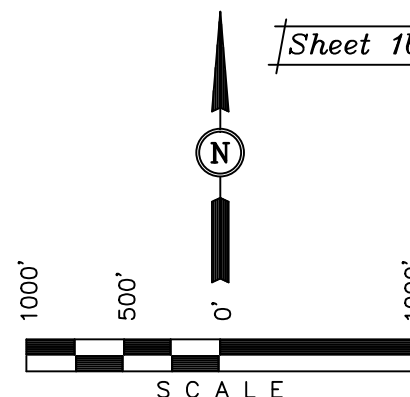
BASIS OF ELEVATION

BENCH MARK (H79) LOCATED IN THE NE 1/4 OF SECTION 35, T4S, R98W, 6th P.M. TAKEN FROM THE BULL FORK QUADRANGLE, COLORADO, 7.5 MINUTE SERIES (TOPO GRAPHICAL MAP) PUBLISHED BY THE UNITED STATES DEPARTMENT OF THE INTERIOR, GEOLOGICAL SURVEY. SAID ELEVATION IS MARKED AS BEING 8535 FEET.

BASIS OF BEARINGS

BASIS OF BEARINGS IS A G.P.S. OBSERVATION.

Sheet 1b of 10



CERTIFICATE

THIS IS TO CERTIFY THAT THE ABOVE PLAT WAS PREPARED AND LOCATION AS SHOWN WAS STAKED ON THE GROUND FROM FIELD NOTES OF ACTUAL SURVEYS MADE BY ME OR UNDER MY SUPERVISION AND THAT THE SAME ARE TRUE AND CORRECT TO THE BEST OF MY KNOWLEDGE AND BELIEF.

REGISTERED LAND SURVEYOR
REGISTRATION NO. 17492
STATE OF COLORADO
06-11-13

EU 8809B-24 D30 397
SURFACE LOCATION

UINTAH ENGINEERING & LAND SURVEYING
85 SOUTH 200 EAST - VERNAL, UTAH 84078
(435) 789-1017

| | | |
|-------------------------|-------------------------------------|-------------------------|
| SCALE 1" = 1000' | DATE SURVEYED: 03-29-13 | DATE DRAWN: 05-07-13 |
| PARTY G.O. B.H. T.B. | REFERENCES G.L.O. PLAT | |
| WEATHER COLD | FILE Encana OIL & GAS (USA) INC. | |

S89°20'W - 5493.18' (G.L.O.)

1938 Brass Cap
0.1' High,
Pile of Stones
Lat: 39.781908°
Long: 108.332417°

N02°17'W - 2655.84' (G.L.O.)

1940 Brass Cap
0.8' High,
Pile of Stones
Lat: 39.774453°
Long: 108.351594°

NOTE:
THE PROPOSED TARGET BOTTOM HOLE
BEARS N40°33'25"W 3039.92' FROM THE
PROPOSED WELL HEAD WHICH IS LOCATED IN
LOT 4 OF SECTION 19, T3S, R97W, 6th P.M.
AT 31' FSL 519' FWL.

COC060749

COC065568

24

EU 8809B-24 D30 397
TARGET BOTTOM HOLE

NOTE:
THE LEASE LINE IS LOCATED N01°W 309'
FROM THE TARGET BOTTOM HOLE.

1938 Brass Cap
0.3' High,
Pile of Stones
Lat: 39.774642°
Long: 108.332153°

1391'

N01°37'11"W - 2648.90' (Meas.)

N01°38'52"W - 2651.54' (Meas.)

N40°33'25"W
3039.92'

2341'

1940 Brass Cap
1.0' High,
Mound of Stones
Lat: 39.767167°
Long: 108.351239°

1940 Brass Cap
0.7' High, Pile of
Stones, Steel Post
Lat: 39.767283°
Long: 108.341564°

1938 Brass Cap
0.5' High,
Pile of Stones
Lat: 39.767369°
Long: 108.331883°

S89°05'52"W - 2720.93' (Meas.)

S89°18'49"W - 2722.54' (Meas.)

LEGEND:

└─┘ = 90° SYMBOL

● = PROPOSED WELL HEAD.

▲ = SECTION CORNERS LOCATED.

| |
|--|
| NAD 83 (TARGET BOTTOM HOLE) |
| LATITUDE = 39°46'25.49" (39.773747) |
| LONGITUDE = 108°20'13.44" (108.337067) |
| NAD 27 (TARGET BOTTOM HOLE) |
| LATITUDE = 39°46'25.59" (39.773775) |
| LONGITUDE = 108°20'11.12" (108.336422) |