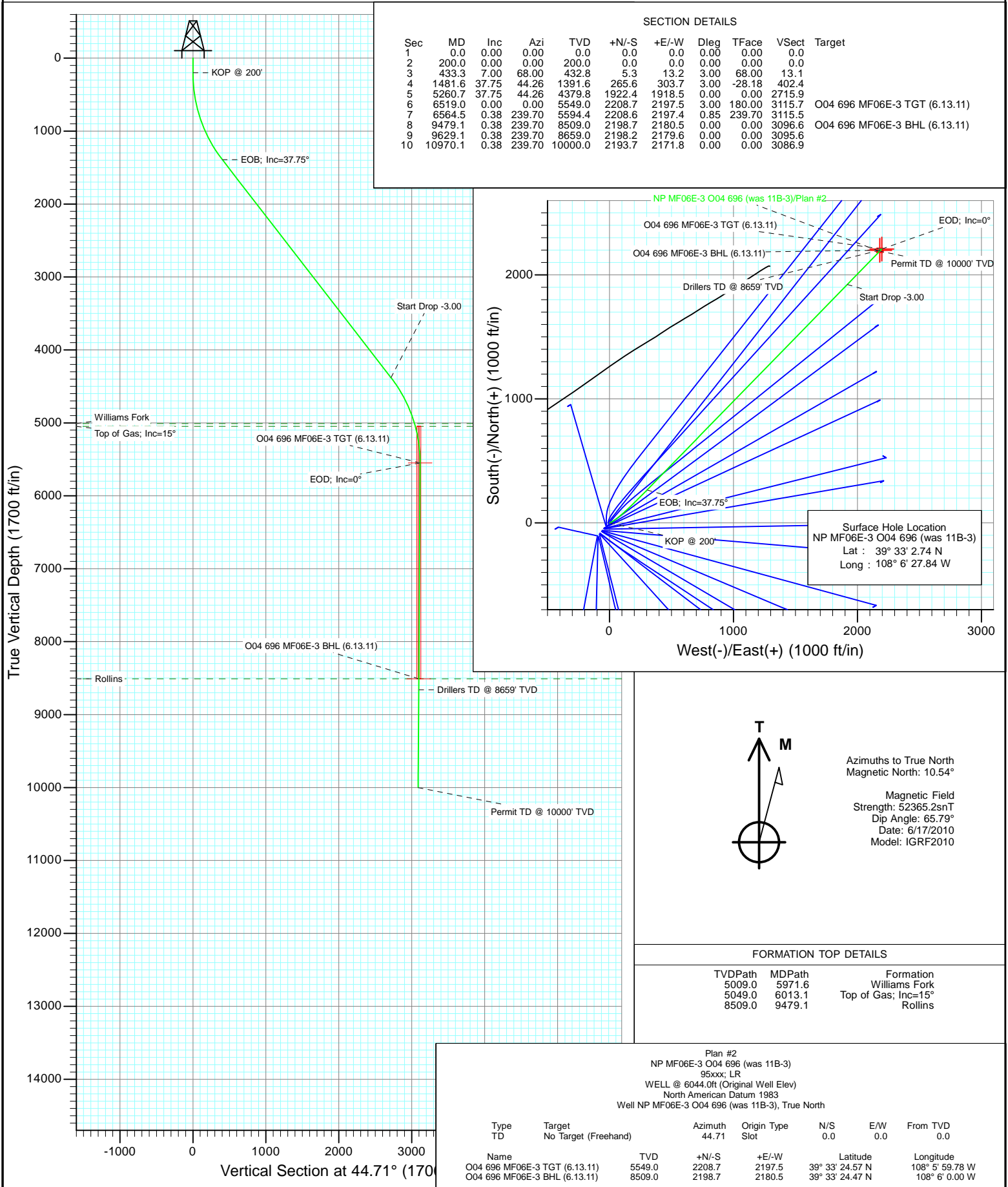




Project: North Piceance
Site: O04 696 (3rd)
Well: NP MF06E-3 O04 696 (was 11B-3)
Wellbore: DD
Design: Plan #2



Planning Report

Database:	USA EDM 5000 US Multi Users DB	Local Co-ordinate Reference:	Well NP MF06E-3 O04 696 (was 11B-3)
Company:	EnCana Oil & Gas (USA) Inc	TVD Reference:	WELL @ 6044.0ft (Original Well Elev)
Project:	North Piceance	MD Reference:	WELL @ 6044.0ft (Original Well Elev)
Site:	O04 696 (3rd)	North Reference:	True
Well:	NP MF06E-3 O04 696 (was 11B-3)	Survey Calculation Method:	Minimum Curvature
Wellbore:	DD		
Design:	Plan #2		

Project	North Piceance		
Map System:	US State Plane 1983	System Datum:	Mean Sea Level
Geo Datum:	North American Datum 1983		
Map Zone:	Colorado Central Zone		

Site	O04 696 (3rd)			
Site Position:		Northing:	1,635,941.08 ft	Latitude: 39° 33' 1.64 N
From:	Lat/Long	Easting:	2,264,673.43 ft	Longitude: 108° 6' 29.09 W
Position Uncertainty:	0.0 ft	Slot Radius:	13.200 in	Grid Convergence: -1.64 °

Well	NP MF06E-3 O04 696 (was 11B-3)			
Well Position	+N/-S	0.0 ft	Northing:	1,636,049.50 ft
	+E/-W	0.0 ft	Easting:	2,264,774.49 ft
Position Uncertainty		0.0 ft	Wellhead Elevation:	ft
			Ground Level:	6,022.0 ft

Wellbore	DD				
Magnetics	Model Name	Sample Date	Declination (°)	Dip Angle (°)	Field Strength (nT)
	IGRF2010	6/17/2010	10.54	65.79	52,365

Design	Plan #2			
Audit Notes:				
Version:	Phase:	PLAN	Tie On Depth:	0.0
Vertical Section:	Depth From (TVD) (ft)	+N/-S (ft)	+E/-W (ft)	Direction (°)
	0.0	0.0	0.0	44.71

Plan Sections										
Measured Depth (ft)	Inclination (°)	Azimuth (°)	Vertical Depth (ft)	+N/-S (ft)	+E/-W (ft)	Dogleg Rate (°/100ft)	Build Rate (°/100ft)	Turn Rate (°/100ft)	TFO (°)	Target
0.0	0.00	0.00	0.0	0.0	0.0	0.00	0.00	0.00	0.00	
200.0	0.00	0.00	200.0	0.0	0.0	0.00	0.00	0.00	0.00	
433.3	7.00	68.00	432.8	5.3	13.2	3.00	3.00	0.00	68.00	
1,481.6	37.75	44.26	1,391.6	265.6	303.7	3.00	2.93	-2.26	-28.18	
5,260.7	37.75	44.26	4,379.8	1,922.4	1,918.5	0.00	0.00	0.00	0.00	
6,519.0	0.00	0.00	5,549.0	2,208.7	2,197.5	3.00	-3.00	0.00	180.00	O04 696 MF06E-3 TC
6,564.5	0.38	239.70	5,594.4	2,208.6	2,197.4	0.85	0.85	-264.71	239.70	
9,479.1	0.38	239.70	8,509.0	2,198.7	2,180.5	0.00	0.00	0.00	0.00	O04 696 MF06E-3 BH
9,629.1	0.38	239.70	8,659.0	2,198.2	2,179.6	0.00	0.00	0.00	0.00	
10,970.1	0.38	239.70	10,000.0	2,193.7	2,171.8	0.00	0.00	0.00	0.00	

Planning Report

Database:	USA EDM 5000 US Multi Users DB	Local Co-ordinate Reference:	Well NP MF06E-3 O04 696 (was 11B-3)
Company:	EnCana Oil & Gas (USA) Inc	TVD Reference:	WELL @ 6044.0ft (Original Well Elev)
Project:	North Piceance	MD Reference:	WELL @ 6044.0ft (Original Well Elev)
Site:	O04 696 (3rd)	North Reference:	True
Well:	NP MF06E-3 O04 696 (was 11B-3)	Survey Calculation Method:	Minimum Curvature
Wellbore:	DD		
Design:	Plan #2		

Planned Survey

Measured Depth (ft)	Inclination (°)	Azimuth (°)	Vertical Depth (ft)	+N/-S (ft)	+E/-W (ft)	Vertical Section (ft)	Dogleg Rate (°/100ft)	Build Rate (°/100ft)	Comments / Formations
0.0	0.00	0.00	0.0	0.0	0.0	0.0	0.00	0.00	
30.0	0.00	0.00	30.0	0.0	0.0	0.0	0.00	0.00	
60.0	0.00	0.00	60.0	0.0	0.0	0.0	0.00	0.00	
90.0	0.00	0.00	90.0	0.0	0.0	0.0	0.00	0.00	
120.0	0.00	0.00	120.0	0.0	0.0	0.0	0.00	0.00	
150.0	0.00	0.00	150.0	0.0	0.0	0.0	0.00	0.00	
180.0	0.00	0.00	180.0	0.0	0.0	0.0	0.00	0.00	
200.0	0.00	0.00	200.0	0.0	0.0	0.0	0.00	0.00	KOP @ 200'
210.0	0.30	68.00	210.0	0.0	0.0	0.0	3.00	3.00	
240.0	1.20	68.00	240.0	0.2	0.4	0.4	3.00	3.00	
270.0	2.10	68.00	270.0	0.5	1.2	1.2	3.00	3.00	
300.0	3.00	68.00	300.0	1.0	2.4	2.4	3.00	3.00	
330.0	3.90	68.00	329.9	1.7	4.1	4.1	3.00	3.00	
360.0	4.80	68.00	359.8	2.5	6.2	6.2	3.00	3.00	
390.0	5.70	68.00	389.7	3.5	8.8	8.7	3.00	3.00	
420.0	6.60	68.00	419.5	4.7	11.7	11.6	3.00	3.00	
433.3	7.00	68.00	432.8	5.3	13.2	13.1	3.00	3.00	
450.0	7.44	66.18	449.3	6.1	15.1	15.0	3.00	2.67	
480.0	8.26	63.39	479.0	7.9	18.8	18.9	3.00	2.72	
510.0	9.09	61.11	508.7	10.0	22.8	23.2	3.00	2.77	
540.0	9.94	59.21	538.2	12.5	27.1	28.0	3.00	2.81	
570.0	10.79	57.61	567.8	15.3	31.7	33.2	3.00	2.84	
600.0	11.65	56.24	597.2	18.5	36.6	38.9	3.00	2.87	
630.0	12.51	55.05	626.5	22.0	41.8	45.1	3.00	2.88	
660.0	13.38	54.02	655.8	25.9	47.3	51.7	3.00	2.90	
690.0	14.26	53.11	684.9	30.2	53.0	58.8	3.00	2.91	
720.0	15.13	52.30	713.9	34.8	59.1	66.3	3.00	2.92	
750.0	16.01	51.58	742.8	39.8	65.4	74.3	3.00	2.93	
780.0	16.89	50.94	771.6	45.1	72.1	82.7	3.00	2.94	
810.0	17.78	50.35	800.2	50.8	79.0	91.6	3.00	2.94	
840.0	18.66	49.82	828.7	56.8	86.2	101.0	3.00	2.95	
870.0	19.55	49.34	857.1	63.1	93.6	110.8	3.00	2.95	
900.0	20.43	48.90	885.3	69.9	101.4	121.0	3.00	2.96	
930.0	21.32	48.49	913.3	76.9	109.4	131.6	3.00	2.96	
960.0	22.21	48.11	941.1	84.3	117.7	142.7	3.00	2.96	
990.0	23.10	47.76	968.8	92.1	126.3	154.3	3.00	2.97	
1,020.0	23.99	47.44	996.3	100.1	135.2	166.3	3.00	2.97	
1,050.0	24.88	47.13	1,023.6	108.6	144.3	178.7	3.00	2.97	
1,080.0	25.77	46.85	1,050.8	117.3	153.7	191.5	3.00	2.97	
1,110.0	26.67	46.59	1,077.7	126.4	163.3	204.7	3.00	2.97	
1,140.0	27.56	46.34	1,104.4	135.8	173.2	218.4	3.00	2.98	
1,170.0	28.45	46.10	1,130.9	145.6	183.4	232.5	3.00	2.98	
1,200.0	29.35	45.88	1,157.1	155.6	193.8	247.0	3.00	2.98	
1,230.0	30.24	45.67	1,183.2	166.0	204.5	261.9	3.00	2.98	
1,260.0	31.13	45.47	1,209.0	176.8	215.4	277.2	3.00	2.98	
1,290.0	32.03	45.28	1,234.5	187.8	226.6	292.9	3.00	2.98	
1,320.0	32.92	45.10	1,259.8	199.2	238.0	309.0	3.00	2.98	
1,350.0	33.82	44.93	1,284.9	210.8	249.7	325.5	3.00	2.98	
1,380.0	34.71	44.77	1,309.7	222.8	261.6	342.4	3.00	2.98	
1,410.0	35.61	44.61	1,334.2	235.1	273.8	359.7	3.00	2.98	
1,440.0	36.51	44.46	1,358.4	247.7	286.2	377.3	3.00	2.99	
1,470.0	37.40	44.32	1,382.4	260.5	298.8	395.4	3.00	2.99	

Planning Report

Database: USA EDM 5000 US Multi Users DB
Company: EnCana Oil & Gas (USA) Inc
Project: North Piceance
Site: O04 696 (3rd)
Well: NP MF06E-3 O04 696 (was 11B-3)
Wellbore: DD
Design: Plan #2

Local Co-ordinate Reference: Well NP MF06E-3 O04 696 (was 11B-3)
TVD Reference: WELL @ 6044.0ft (Original Well Elev)
MD Reference: WELL @ 6044.0ft (Original Well Elev)
North Reference: True
Survey Calculation Method: Minimum Curvature

Planned Survey

Measured Depth (ft)	Inclination (°)	Azimuth (°)	Vertical Depth (ft)	+N/-S (ft)	+E/-W (ft)	Vertical Section (ft)	Dogleg Rate (°/100ft)	Build Rate (°/100ft)	Comments / Formations
1,481.6	37.75	44.26	1,391.6	265.6	303.7	402.4	3.00	2.99	EOB; Inc=37.75°
1,500.0	37.75	44.26	1,406.2	273.7	311.6	413.7	0.00	0.00	
1,530.0	37.75	44.26	1,429.9	286.8	324.4	432.1	0.00	0.00	
1,560.0	37.75	44.26	1,453.6	300.0	337.2	450.4	0.00	0.00	
1,590.0	37.75	44.26	1,477.3	313.1	350.0	468.8	0.00	0.00	
1,620.0	37.75	44.26	1,501.0	326.3	362.8	487.2	0.00	0.00	
1,650.0	37.75	44.26	1,524.8	339.4	375.7	505.5	0.00	0.00	
1,680.0	37.75	44.26	1,548.5	352.6	388.5	523.9	0.00	0.00	
1,710.0	37.75	44.26	1,572.2	365.7	401.3	542.3	0.00	0.00	
1,740.0	37.75	44.26	1,595.9	378.9	414.1	560.6	0.00	0.00	
1,770.0	37.75	44.26	1,619.7	392.1	426.9	579.0	0.00	0.00	
1,800.0	37.75	44.26	1,643.4	405.2	439.8	597.3	0.00	0.00	
1,830.0	37.75	44.26	1,667.1	418.4	452.6	615.7	0.00	0.00	
1,860.0	37.75	44.26	1,690.8	431.5	465.4	634.1	0.00	0.00	
1,890.0	37.75	44.26	1,714.5	444.7	478.2	652.4	0.00	0.00	
1,920.0	37.75	44.26	1,738.3	457.8	491.0	670.8	0.00	0.00	
1,950.0	37.75	44.26	1,762.0	471.0	503.9	689.2	0.00	0.00	
1,980.0	37.75	44.26	1,785.7	484.1	516.7	707.5	0.00	0.00	
2,010.0	37.75	44.26	1,809.4	497.3	529.5	725.9	0.00	0.00	
2,040.0	37.75	44.26	1,833.1	510.4	542.3	744.3	0.00	0.00	
2,070.0	37.75	44.26	1,856.9	523.6	555.1	762.6	0.00	0.00	
2,100.0	37.75	44.26	1,880.6	536.7	567.9	781.0	0.00	0.00	
2,130.0	37.75	44.26	1,904.3	549.9	580.8	799.4	0.00	0.00	
2,160.0	37.75	44.26	1,928.0	563.0	593.6	817.7	0.00	0.00	
2,190.0	37.75	44.26	1,951.7	576.2	606.4	836.1	0.00	0.00	
2,220.0	37.75	44.26	1,975.5	589.3	619.2	854.5	0.00	0.00	
2,250.0	37.75	44.26	1,999.2	602.5	632.0	872.8	0.00	0.00	
2,280.0	37.75	44.26	2,022.9	615.6	644.9	891.2	0.00	0.00	
2,310.0	37.75	44.26	2,046.6	628.8	657.7	909.6	0.00	0.00	
2,340.0	37.75	44.26	2,070.4	641.9	670.5	927.9	0.00	0.00	
2,370.0	37.75	44.26	2,094.1	655.1	683.3	946.3	0.00	0.00	
2,400.0	37.75	44.26	2,117.8	668.3	696.1	964.7	0.00	0.00	
2,430.0	37.75	44.26	2,141.5	681.4	709.0	983.0	0.00	0.00	
2,460.0	37.75	44.26	2,165.2	694.6	721.8	1,001.4	0.00	0.00	
2,490.0	37.75	44.26	2,189.0	707.7	734.6	1,019.8	0.00	0.00	

Targets

Target Name	Dip Angle (°)	Dip Dir. (°)	TVD (ft)	+N/-S (ft)	+E/-W (ft)	Northing (ft)	Easting (ft)	Latitude	Longitude
O04 696 MF06E-3 BHL - hit/miss target - Shape	0.00	0.00	8,509.0	2,198.7	2,180.5	1,638,184.76	2,267,017.17	39° 33' 24.47 N	108° 6' 0.00 W
- plan misses target center by 6652.6ft at 2490.0ft MD (2189.0 TVD, 707.7 N, 734.6 E) - Rectangle (sides W30.0 H50.0 D0.0)									
O04 696 MF06E-3 TGT - plan misses target center by 3960.2ft at 2490.0ft MD (2189.0 TVD, 707.7 N, 734.6 E) - Point	0.00	0.00	5,549.0	2,208.7	2,197.5	1,638,194.22	2,267,034.48	39° 33' 24.57 N	108° 5' 59.78 W

Planning Report

Database: USA EDM 5000 US Multi Users DB
Company: EnCana Oil & Gas (USA) Inc
Project: North Piceance
Site: O04 696 (3rd)
Well: NP MF06E-3 O04 696 (was 11B-3)
Wellbore: DD
Design: Plan #2

Local Co-ordinate Reference: Well NP MF06E-3 O04 696 (was 11B-3)
TVD Reference: WELL @ 6044.0ft (Original Well Elev)
MD Reference: WELL @ 6044.0ft (Original Well Elev)
North Reference: True
Survey Calculation Method: Minimum Curvature

Planned Survey

Measured Depth (ft)	Inclination (°)	Azimuth (°)	Vertical Depth (ft)	+N/-S (ft)	+E/-W (ft)	Vertical Section (ft)	Dogleg Rate (°/100ft)	Build Rate (°/100ft)	Comments / Formations
2,500.0	37.75	44.26	2,196.9	712.1	738.9	1,025.9	0.00	0.00	
2,600.0	37.75	44.26	2,275.9	755.9	781.6	1,087.1	0.00	0.00	
2,700.0	37.75	44.26	2,355.0	799.8	824.3	1,148.3	0.00	0.00	
2,800.0	37.75	44.26	2,434.1	843.6	867.1	1,209.5	0.00	0.00	
2,900.0	37.75	44.26	2,513.1	887.5	909.8	1,270.7	0.00	0.00	
3,000.0	37.75	44.26	2,592.2	931.3	952.5	1,332.0	0.00	0.00	
3,100.0	37.75	44.26	2,671.3	975.1	995.2	1,393.2	0.00	0.00	
3,200.0	37.75	44.26	2,750.4	1,019.0	1,038.0	1,454.4	0.00	0.00	
3,300.0	37.75	44.26	2,829.4	1,062.8	1,080.7	1,515.6	0.00	0.00	
3,400.0	37.75	44.26	2,908.5	1,106.7	1,123.4	1,576.8	0.00	0.00	
3,500.0	37.75	44.26	2,987.6	1,150.5	1,166.2	1,638.1	0.00	0.00	
3,600.0	37.75	44.26	3,066.6	1,194.4	1,208.9	1,699.3	0.00	0.00	
3,700.0	37.75	44.26	3,145.7	1,238.2	1,251.6	1,760.5	0.00	0.00	
3,800.0	37.75	44.26	3,224.8	1,282.0	1,294.3	1,821.7	0.00	0.00	
3,900.0	37.75	44.26	3,303.9	1,325.9	1,337.1	1,882.9	0.00	0.00	
4,000.0	37.75	44.26	3,382.9	1,369.7	1,379.8	1,944.1	0.00	0.00	
4,100.0	37.75	44.26	3,462.0	1,413.6	1,422.5	2,005.4	0.00	0.00	
4,200.0	37.75	44.26	3,541.1	1,457.4	1,465.3	2,066.6	0.00	0.00	
4,300.0	37.75	44.26	3,620.1	1,501.2	1,508.0	2,127.8	0.00	0.00	
4,400.0	37.75	44.26	3,699.2	1,545.1	1,550.7	2,189.0	0.00	0.00	
4,500.0	37.75	44.26	3,778.3	1,588.9	1,593.4	2,250.2	0.00	0.00	
4,600.0	37.75	44.26	3,857.3	1,632.8	1,636.2	2,311.5	0.00	0.00	
4,700.0	37.75	44.26	3,936.4	1,676.6	1,678.9	2,372.7	0.00	0.00	
4,800.0	37.75	44.26	4,015.5	1,720.5	1,721.6	2,433.9	0.00	0.00	
4,900.0	37.75	44.26	4,094.6	1,764.3	1,764.4	2,495.1	0.00	0.00	
5,000.0	37.75	44.26	4,173.6	1,808.1	1,807.1	2,556.3	0.00	0.00	
5,100.0	37.75	44.26	4,252.7	1,852.0	1,849.8	2,617.5	0.00	0.00	
5,200.0	37.75	44.26	4,331.8	1,895.8	1,892.6	2,678.8	0.00	0.00	
5,260.7	37.75	44.26	4,379.8	1,922.4	1,918.5	2,715.9	0.00	0.00	Start Drop -3.00
5,300.0	36.57	44.26	4,411.1	1,939.4	1,935.1	2,739.7	3.00	-3.00	
5,400.0	33.57	44.26	4,492.9	1,980.6	1,975.2	2,797.1	3.00	-3.00	
5,500.0	30.57	44.26	4,577.6	2,018.6	2,012.2	2,850.2	3.00	-3.00	
5,600.0	27.57	44.26	4,665.0	2,053.4	2,046.1	2,898.8	3.00	-3.00	
5,700.0	24.57	44.26	4,754.9	2,084.9	2,076.8	2,942.7	3.00	-3.00	
5,800.0	21.57	44.26	4,846.8	2,112.9	2,104.1	2,981.9	3.00	-3.00	
5,900.0	18.57	44.26	4,940.8	2,137.5	2,128.1	3,016.2	3.00	-3.00	
5,971.6	16.42	44.26	5,009.0	2,152.9	2,143.1	3,037.7	3.00	-3.00	Williams Fork
6,000.0	15.57	44.26	5,036.3	2,158.5	2,148.6	3,045.6	3.00	-3.00	
6,013.1	15.18	44.26	5,049.0	2,161.0	2,151.0	3,049.0	3.00	-3.00	Top of Gas; Inc=15°
6,100.0	12.57	44.26	5,133.3	2,175.9	2,165.5	3,069.9	3.00	-3.00	
6,200.0	9.57	44.26	5,231.5	2,189.7	2,178.9	3,089.1	3.00	-3.00	
6,300.0	6.57	44.26	5,330.5	2,199.7	2,188.7	3,103.1	3.00	-3.00	
6,400.0	3.57	44.26	5,430.1	2,206.0	2,194.9	3,111.9	3.00	-3.00	
6,500.0	0.57	44.26	5,530.0	2,208.6	2,197.4	3,115.6	3.00	-3.00	
6,519.0	0.00	44.26	5,549.0	2,208.7	2,197.5	3,115.7	3.00	-3.00	EOD; Inc=0° - O04 696 MF06E-3 TGT (6.13.11)
6,564.5	0.38	239.70	5,594.4	2,208.6	2,197.4	3,115.5	0.85	0.85	
6,600.0	0.38	239.70	5,630.0	2,208.5	2,197.2	3,115.3	0.00	0.00	
6,700.0	0.38	239.70	5,730.0	2,208.2	2,196.6	3,114.6	0.00	0.00	
6,800.0	0.38	239.70	5,830.0	2,207.8	2,196.0	3,114.0	0.00	0.00	
6,900.0	0.38	239.70	5,930.0	2,207.5	2,195.4	3,113.3	0.00	0.00	
7,000.0	0.38	239.70	6,030.0	2,207.1	2,194.8	3,112.7	0.00	0.00	
7,100.0	0.38	239.70	6,130.0	2,206.8	2,194.3	3,112.0	0.00	0.00	

Planning Report

Database:	USA EDM 5000 US Multi Users DB	Local Co-ordinate Reference:	Well NP MF06E-3 O04 696 (was 11B-3)
Company:	EnCana Oil & Gas (USA) Inc	TVD Reference:	WELL @ 6044.0ft (Original Well Elev)
Project:	North Piceance	MD Reference:	WELL @ 6044.0ft (Original Well Elev)
Site:	O04 696 (3rd)	North Reference:	True
Well:	NP MF06E-3 O04 696 (was 11B-3)	Survey Calculation Method:	Minimum Curvature
Wellbore:	DD		
Design:	Plan #2		

Planned Survey									
Measured Depth (ft)	Inclination (°)	Azimuth (°)	Vertical Depth (ft)	+N/-S (ft)	+E/-W (ft)	Vertical Section (ft)	Dogleg Rate (°/100ft)	Build Rate (°/100ft)	Comments / Formations
7,200.0	0.38	239.70	6,230.0	2,206.5	2,193.7	3,111.4	0.00	0.00	
7,300.0	0.38	239.70	6,330.0	2,206.1	2,193.1	3,110.7	0.00	0.00	
7,400.0	0.38	239.70	6,430.0	2,205.8	2,192.5	3,110.1	0.00	0.00	
7,500.0	0.38	239.70	6,530.0	2,205.5	2,191.9	3,109.4	0.00	0.00	
7,600.0	0.38	239.70	6,630.0	2,205.1	2,191.4	3,108.8	0.00	0.00	
7,700.0	0.38	239.70	6,730.0	2,204.8	2,190.8	3,108.1	0.00	0.00	
7,800.0	0.38	239.70	6,830.0	2,204.4	2,190.2	3,107.5	0.00	0.00	
7,900.0	0.38	239.70	6,929.9	2,204.1	2,189.6	3,106.8	0.00	0.00	
8,000.0	0.38	239.70	7,029.9	2,203.8	2,189.0	3,106.2	0.00	0.00	
8,100.0	0.38	239.70	7,129.9	2,203.4	2,188.5	3,105.5	0.00	0.00	
8,200.0	0.38	239.70	7,229.9	2,203.1	2,187.9	3,104.9	0.00	0.00	
8,300.0	0.38	239.70	7,329.9	2,202.7	2,187.3	3,104.2	0.00	0.00	
8,400.0	0.38	239.70	7,429.9	2,202.4	2,186.7	3,103.6	0.00	0.00	
8,500.0	0.38	239.70	7,529.9	2,202.1	2,186.1	3,103.0	0.00	0.00	
8,600.0	0.38	239.70	7,629.9	2,201.7	2,185.6	3,102.3	0.00	0.00	
8,700.0	0.38	239.70	7,729.9	2,201.4	2,185.0	3,101.7	0.00	0.00	
8,800.0	0.38	239.70	7,829.9	2,201.0	2,184.4	3,101.0	0.00	0.00	
8,900.0	0.38	239.70	7,929.9	2,200.7	2,183.8	3,100.4	0.00	0.00	
9,000.0	0.38	239.70	8,029.9	2,200.4	2,183.2	3,099.7	0.00	0.00	
9,100.0	0.38	239.70	8,129.9	2,200.0	2,182.7	3,099.1	0.00	0.00	
9,200.0	0.38	239.70	8,229.9	2,199.7	2,182.1	3,098.4	0.00	0.00	
9,300.0	0.38	239.70	8,329.9	2,199.4	2,181.5	3,097.8	0.00	0.00	
9,400.0	0.38	239.70	8,429.9	2,199.0	2,180.9	3,097.1	0.00	0.00	
9,479.1	0.38	239.70	8,509.0	2,198.7	2,180.5	3,096.6	0.00	0.00	Rollins - O04 696 MF06E-3 BHL (6.13.11)
9,500.0	0.38	239.70	8,529.9	2,198.7	2,180.3	3,096.5	0.00	0.00	
9,600.0	0.38	239.70	8,629.9	2,198.3	2,179.8	3,095.8	0.00	0.00	
9,629.1	0.38	239.70	8,659.0	2,198.2	2,179.6	3,095.6	0.00	0.00	Drillers TD @ 8659' TVD
9,700.0	0.38	239.70	8,729.9	2,198.0	2,179.2	3,095.2	0.00	0.00	
9,800.0	0.38	239.70	8,829.9	2,197.7	2,178.6	3,094.5	0.00	0.00	
9,900.0	0.38	239.70	8,929.9	2,197.3	2,178.0	3,093.9	0.00	0.00	
10,000.0	0.38	239.70	9,029.9	2,197.0	2,177.4	3,093.2	0.00	0.00	
10,100.0	0.38	239.70	9,129.9	2,196.6	2,176.9	3,092.6	0.00	0.00	
10,200.0	0.38	239.70	9,229.9	2,196.3	2,176.3	3,091.9	0.00	0.00	
10,300.0	0.38	239.70	9,329.9	2,196.0	2,175.7	3,091.3	0.00	0.00	
10,400.0	0.38	239.70	9,429.9	2,195.6	2,175.1	3,090.6	0.00	0.00	
10,500.0	0.38	239.70	9,529.9	2,195.3	2,174.6	3,090.0	0.00	0.00	
10,600.0	0.38	239.70	9,629.9	2,195.0	2,174.0	3,089.3	0.00	0.00	
10,700.0	0.38	239.70	9,729.9	2,194.6	2,173.4	3,088.7	0.00	0.00	
10,800.0	0.38	239.70	9,829.9	2,194.3	2,172.8	3,088.0	0.00	0.00	
10,900.0	0.38	239.70	9,929.9	2,193.9	2,172.2	3,087.4	0.00	0.00	
10,970.1	0.38	239.70	10,000.0	2,193.7	2,171.8	3,086.9	0.00	0.00	Permit TD @ 10000' TVD

Planning Report

Database:	USA EDM 5000 US Multi Users DB	Local Co-ordinate Reference:	Well NP MF06E-3 O04 696 (was 11B-3)
Company:	EnCana Oil & Gas (USA) Inc	TVD Reference:	WELL @ 6044.0ft (Original Well Elev)
Project:	North Piceance	MD Reference:	WELL @ 6044.0ft (Original Well Elev)
Site:	O04 696 (3rd)	North Reference:	True
Well:	NP MF06E-3 O04 696 (was 11B-3)	Survey Calculation Method:	Minimum Curvature
Wellbore:	DD		
Design:	Plan #2		

Targets									
Target Name	Dip Angle	Dip Dir.	TVD	+N/-S	+E/-W	Northing	Easting	Latitude	Longitude
- hit/miss target	(°)	(°)	(ft)	(ft)	(ft)	(ft)	(ft)		
- Shape									
O04 696 MF06E-3 BHL - plan hits target center - Rectangle (sides W30.0 H50.0 D0.0)	0.00	0.00	8,509.0	2,198.7	2,180.5	1,638,184.76	2,267,017.17	39° 33' 24.47 N	108° 6' 0.00 W
O04 696 MF06E-3 TGT - plan hits target center - Point	0.00	0.00	5,549.0	2,208.7	2,197.5	1,638,194.22	2,267,034.48	39° 33' 24.57 N	108° 5' 59.78 W

Formations					
Measured Depth	Vertical Depth	Name	Lithology	Dip	Dip Direction
(ft)	(ft)			(°)	(°)
5,971.6	5,009.0	Williams Fork		0.00	
6,013.1	5,049.0	Top of Gas; Inc=15°		0.00	
9,479.1	8,509.0	Rollins		0.00	

Plan Annotations				
Measured Depth	Vertical Depth	Local Coordinates		Comment
(ft)	(ft)	+N/-S (ft)	+E/-W (ft)	
200.0	200.0	0.0	0.0	KOP @ 200'
1,481.6	1,391.6	5.3	13.2	EOB; Inc=37.75°
5,260.7	4,379.8	265.6	303.7	Start Drop -3.00
6,519.0	5,549.0	1,922.4	1,918.5	EOD; Inc=0°
9,629.1	8,659.0	2,208.7	2,197.5	Drillers TD @ 8659' TVD
10,970.1	10,000.0	2,208.6	2,197.4	Permit TD @ 10000' TVD

EnCana Oil & Gas (USA) Inc

North Piceance

O04 696 (3rd)

NP MF06E-3 O04 696 (was 11B-3)

DD

Plan #2

Anticollision Report

14 June, 2011

Anticollision Report

Company:	EnCana Oil & Gas (USA) Inc	Local Co-ordinate Reference:	Well NP MF06E-3 O04 696 (was 11B-3)
Project:	North Piceance	TVD Reference:	WELL @ 6044.0ft (Original Well Elev)
Reference Site:	O04 696 (3rd)	MD Reference:	WELL @ 6044.0ft (Original Well Elev)
Site Error:	0.0ft	North Reference:	True
Reference Well:	NP MF06E-3 O04 696 (was 11B-3)	Survey Calculation Method:	Minimum Curvature
Well Error:	0.0ft	Output errors are at	2.00 sigma
Reference Wellbore	DD	Database:	EDM 5000.1 US Multi Users DB
Reference Design:	Plan #2	Offset TVD Reference:	Offset Datum

Reference	Plan #2		
Filter type:	NO GLOBAL FILTER: Using user defined selection & filtering criteria		
Interpolation Method:	MD Interval 100.0ft	Error Model:	Systematic Ellipse
Depth Range:	Unlimited	Scan Method:	Closest Approach 3D
Results Limited by:	Maximum center-center distance of 100.0ft	Error Surface:	Elliptical Conic
Warning Levels Evaluated at:	2.00 Sigma		

Survey Tool Program		Date	6/14/2011		
From (ft)	To (ft)	Survey (Wellbore)	Tool Name	Description	
0.0	10,970.1	Plan #2 (DD)	MWD	Geolink MWD	

Anticollision Report

Company:	EnCana Oil & Gas (USA) Inc	Local Co-ordinate Reference:	Well NP MF06E-3 O04 696 (was 11B-3)
Project:	North Piceance	TVD Reference:	WELL @ 6044.0ft (Original Well Elev)
Reference Site:	O04 696 (3rd)	MD Reference:	WELL @ 6044.0ft (Original Well Elev)
Site Error:	0.0ft	North Reference:	True
Reference Well:	NP MF06E-3 O04 696 (was 11B-3)	Survey Calculation Method:	Minimum Curvature
Well Error:	0.0ft	Output errors are at	2.00 sigma
Reference Wellbore	DD	Database:	EDM 5000.1 US Multi Users DB
Reference Design:	Plan #2	Offset TVD Reference:	Offset Datum

Summary

Site Name	Reference Measured Depth (ft)	Offset Measured Depth (ft)	Distance Between Centres (ft)	Between Ellipses (ft)	Separation Factor	Warning
Offset Well - Wellbore - Design						
D31 595 (Lot 3 S31-T5S-R95W)						
NP EF11C D31 595 - DD - Plan #1						Out of range
NP EF11C D31 595 - DD - Plan #2						Out of range
NP EF11C D31 595 (was 14C) OLD Abandonnd - DD - Pla						Out of range
NP EF11C D31 595 (was 14C) OLD Abandonnd - DD - Pla						Out of range
N04 696 Pad (NESW Sec4-T6S-R96W)						
NP MF09A N04 696 - DD - DD						Out of range
NP MF09A N04 696 - DD - Plan #3						Out of range
NP MF09A N04 696 - DD - Plan #4						Out of range
O04 696 (3rd)						
NP MF01D-9 O04 696 (was 17C-4) - DD - Plan #2						Out of range
NP MF02A-9 O04 696 (was 18C-4) - DD - Plan #2						Out of range
NP MF06A-3 O04 696 (was 11C-3) - DD - Plan #2	100.0	100.0	29.8	29.5	109.290	CC
NP MF06A-3 O04 696 (was 11C-3) - DD - Plan #2	200.0	200.0	29.8	29.1	47.891	ES
NP MF06A-3 O04 696 (was 11C-3) - DD - Plan #2	500.0	500.5	45.8	44.0	24.861	SF
NP MF06B-3 O04 696 (was 15A-4) - DD - Plan #2	200.0	200.0	11.8	11.2	18.979	CC, ES
NP MF06B-3 O04 696 (was 15A-4) - DD - Plan #2	1,600.0	1,596.1	92.3	72.9	4.758	SF
NP MF06C-3 O04 696 (was 09C-4) - DD - Plan #2	200.0	200.0	8.7	8.1	13.969	CC, ES
NP MF06C-3 O04 696 (was 09C-4) - DD - Plan #2	1,500.0	1,504.8	99.0	82.5	6.002	SF
NP MF08B-9 O04 696 (was 01B-9) - DD - Plan #2						Out of range
NP MF11A-3 O04 696 (was 12C-3) - DD - Plan #2	200.0	200.0	8.2	7.6	13.160	CC, ES
NP MF11A-3 O04 696 (was 12C-3) - DD - Plan #2	1,400.0	1,419.6	65.7	57.8	8.344	SF
NP MF11B-3 O04 696 (was 14A-3) - DD - Plan #2	1,037.5	1,048.4	21.2	16.8	4.799	CC
NP MF11B-3 O04 696 (was 14A-3) - DD - Plan #2	1,200.0	1,212.1	23.6	15.4	2.879	ES
NP MF11B-3 O04 696 (was 14A-3) - DD - Plan #2	1,400.0	1,412.9	34.5	20.4	2.443	SF
NP MF11D-3 O04 696 (was 14B-3) - DD - Plan #2	708.3	717.2	33.8	31.1	12.786	CC
NP MF11D-3 O04 696 (was 14B-3) - DD - Plan #2	800.0	810.2	34.2	30.9	10.379	ES
NP MF11D-3 O04 696 (was 14B-3) - DD - Plan #2	1,200.0	1,213.8	55.2	45.2	5.491	SF
NP MF11E-3 O04 696 (was 13A-3) - DD - Plan #2	649.8	662.7	55.8	53.5	23.757	CC
NP MF11E-3 O04 696 (was 13A-3) - DD - Plan #2	700.0	714.2	55.9	53.3	21.451	ES
NP MF11E-3 O04 696 (was 13A-3) - DD - Plan #2	1,200.0	1,221.8	84.9	75.1	8.726	SF
NP MF11G-3 O04 696 (was 14C-3) - DD - Plan #2	200.0	200.0	64.9	64.3	104.407	CC, ES
NP MF11G-3 O04 696 (was 14C-3) - DD - Plan #2	800.0	817.1	97.3	94.2	30.984	SF
NP MF14A-3 O04 696 (was 13B-3) - DD - Plan #2	100.0	100.0	56.8	56.5	208.541	CC
NP MF14A-3 O04 696 (was 13B-3) - DD - Plan #2	300.0	302.3	57.1	56.1	58.204	ES
NP MF14A-3 O04 696 (was 13B-3) - DD - Plan #2	900.0	910.6	93.1	87.7	17.263	SF
NP MF14C-3 O04 696 (was 14D-3) - DD - Plan #2	100.0	100.0	64.5	64.2	236.737	CC
NP MF14C-3 O04 696 (was 14D-3) - DD - Plan #2	200.0	200.0	64.5	63.8	103.739	ES
NP MF14C-3 O04 696 (was 14D-3) - DD - Plan #2	700.0	708.5	86.0	82.8	26.633	SF
NP MF14D-3 O04 696 (was 19A-3) - DD - Plan #2	200.0	200.0	84.5	83.9	135.957	CC, ES
NP MF14D-3 O04 696 (was 19A-3) - DD - Plan #2	500.0	506.0	99.3	97.5	57.620	SF
NP MF14E-3 O04 696 (was 19B-3) - DD - Plan #2	200.0	200.0	84.1	83.5	135.411	CC, ES
NP MF14E-3 O04 696 (was 19B-3) - DD - Plan #2	500.0	504.5	95.9	94.0	51.031	SF
NP MF15A-4 O04 696 (was 11D-3) - DD - Plan #2	200.0	200.0	37.2	36.5	59.815	CC, ES
NP MF15A-4 O04 696 (was 11D-3) - DD - Plan #2	500.0	499.0	57.8	56.0	31.672	SF
NP MF15D-4 O04 696 (was 01B-9) - DD - Plan #2						Out of range
NP MF18B-4 O04 696 (was 01A-9) - DD - Plan #2						Out of range
NP MF19A-3 O04 696 (was 17B-4) - DD - Plan #2	200.0	200.0	92.8	92.2	149.429	CC, ES
NP MF19A-3 O04 696 (was 17B-4) - DD - Plan #2	300.0	300.8	95.0	94.0	97.596	SF
NP MF19C-3 O04 696 (was 20B-3) - DD - Plan #2	200.0	200.0	92.6	92.0	149.043	CC, ES
NP MF19C-3 O04 696 (was 20B-3) - DD - Plan #2	300.0	300.6	94.5	93.5	96.286	SF
NP MF19D-3 O04 696 (was 19C-3) - DD - Plan #2						Out of range

CC - Min centre to center distance or convergent point, SF - min separation factor, ES - min ellipse separation

Anticollision Report

Company:	EnCana Oil & Gas (USA) Inc	Local Co-ordinate Reference:	Well NP MF06E-3 O04 696 (was 11B-3)
Project:	North Piceance	TVD Reference:	WELL @ 6044.0ft (Original Well Elev)
Reference Site:	O04 696 (3rd)	MD Reference:	WELL @ 6044.0ft (Original Well Elev)
Site Error:	0.0ft	North Reference:	True
Reference Well:	NP MF06E-3 O04 696 (was 11B-3)	Survey Calculation Method:	Minimum Curvature
Well Error:	0.0ft	Output errors are at	2.00 sigma
Reference Wellbore	DD	Database:	EDM 5000.1 US Multi Users DB
Reference Design:	Plan #2	Offset TVD Reference:	Offset Datum

Summary						
Site Name	Reference Measured Depth (ft)	Offset Measured Depth (ft)	Distance Between Centres (ft)	Distance Between Ellipses (ft)	Separation Factor	Warning
Offset Well - Wellbore - Design						
O04 696 (3rd)						
NP MF19E-3 O04 696 (was 19D-3) - DD - Plan #2						Out of range
NP MF20F-3 O04 696 (was 20D-3) - DD - Plan #2						Out of range

Anticollision Report

Company:	EnCana Oil & Gas (USA) Inc	Local Co-ordinate Reference:	Well NP MF06E-3 O04 696 (was 11B-3)
Project:	North Piceance	TVD Reference:	WELL @ 6044.0ft (Original Well Elev)
Reference Site:	O04 696 (3rd)	MD Reference:	WELL @ 6044.0ft (Original Well Elev)
Site Error:	0.0ft	North Reference:	True
Reference Well:	NP MF06E-3 O04 696 (was 11B-3)	Survey Calculation Method:	Minimum Curvature
Well Error:	0.0ft	Output errors are at	2.00 sigma
Reference Wellbore	DD	Database:	EDM 5000.1 US Multi Users DB
Reference Design:	Plan #2	Offset TVD Reference:	Offset Datum

Offset Design													O04 696 (3rd) - NP MF06A-3 O04 696 (was 11C-3) - DD - Plan #2		Offset Site Error:		0.0 ft
Survey Program: 0-MWD													Offset Well Error:		0.0 ft		
Reference		Offset		Semi Major Axis			Distance										
Measured Depth Depth (ft)	Vertical Depth (ft)	Measured Depth (ft)	Vertical Depth (ft)	Reference (ft)	Offset (ft)	Highside Toolface (°)	Offset Wellbore Centre +N/-S (ft)	+E/-W (ft)	Between Centres (ft)	Between Ellipses (ft)	Total Uncertainty Axis	Separation Factor	Warning				
0.0	0.0	0.0	0.0	0.0	0.0	-125.31	-17.2	-24.3	29.8								
100.0	100.0	100.0	100.0	0.1	0.1	-125.31	-17.2	-24.3	29.8	29.5	0.27	109.290	CC				
200.0	200.0	200.0	200.0	0.3	0.3	-125.31	-17.2	-24.3	29.8	29.1	0.62	47.891	ES				
300.0	300.0	300.8	300.8	0.5	0.5	171.84	-14.5	-24.3	30.9	29.9	0.98	31.598					
400.0	399.6	401.1	400.7	0.7	0.7	-175.22	-6.6	-24.3	35.6	34.2	1.37	26.002					
500.0	498.8	500.5	499.2	1.0	1.0	-155.20	6.4	-24.3	45.8	44.0	1.84	24.861	SF				
600.0	597.2	598.9	596.0	1.3	1.4	-140.06	24.3	-24.3	61.2	58.7	2.46	24.898					
700.0	694.6	696.1	690.5	1.8	1.8	-130.52	46.9	-24.3	80.8	77.6	3.23	25.035					

Anticollision Report

Company:	EnCana Oil & Gas (USA) Inc	Local Co-ordinate Reference:	Well NP MF06E-3 O04 696 (was 11B-3)
Project:	North Piceance	TVD Reference:	WELL @ 6044.0ft (Original Well Elev)
Reference Site:	O04 696 (3rd)	MD Reference:	WELL @ 6044.0ft (Original Well Elev)
Site Error:	0.0ft	North Reference:	True
Reference Well:	NP MF06E-3 O04 696 (was 11B-3)	Survey Calculation Method:	Minimum Curvature
Well Error:	0.0ft	Output errors are at	2.00 sigma
Reference Wellbore	DD	Database:	EDM 5000.1 US Multi Users DB
Reference Design:	Plan #2	Offset TVD Reference:	Offset Datum

Offset Design													O04 696 (3rd) - NP MF06B-3 O04 696 (was 15A-4) - DD - Plan #2		Offset Site Error:		0.0 ft
Survey Program:													0-MWD		Offset Well Error:		0.0 ft
Reference		Offset		Semi Major Axis			Distance							Warning			
Measured Depth (ft)	Vertical Depth (ft)	Measured Depth (ft)	Vertical Depth (ft)	Reference (ft)	Offset (ft)	Highside Toolface (°)	Offset Wellbore Centre		Between Centres (ft)	Between Ellipses (ft)	Total Uncertainty Axis	Separation Factor					
+N/-S (ft)	+E/-W (ft)																
0.0	0.0	0.0	0.0	0.0	0.0	-94.90	-1.0	-11.7	11.8								
100.0	100.0	100.0	100.0	0.1	0.1	-94.90	-1.0	-11.7	11.8	11.5	0.27	43.311					
200.0	200.0	200.0	200.0	0.3	0.3	-94.90	-1.0	-11.7	11.8	11.2	0.62	18.979 CC, ES					
300.0	300.0	300.4	300.4	0.5	0.5	-157.61	1.1	-10.1	12.6	11.6	0.98	12.845					
400.0	399.6	400.7	400.3	0.7	0.7	-145.34	7.3	-5.2	15.3	13.9	1.38	11.091					
500.0	498.8	500.8	499.6	1.0	1.0	-127.69	17.6	2.9	20.4	18.5	1.91	10.676					
600.0	597.2	600.8	597.9	1.3	1.4	-115.17	31.9	14.1	26.2	23.6	2.62	10.013					
700.0	694.6	700.8	695.0	1.8	1.8	-107.34	50.3	28.6	32.3	28.8	3.51	9.227					
800.0	790.7	800.6	790.7	2.3	2.4	-102.05	72.6	46.1	38.7	34.1	4.58	8.454					
900.0	885.3	900.3	884.7	2.9	3.0	-98.25	98.8	66.7	45.2	39.4	5.83	7.749					
1,000.0	978.0	1,000.0	976.8	3.6	3.7	-95.40	128.8	90.3	51.8	44.5	7.27	7.125					
1,100.0	1,068.7	1,099.6	1,066.7	4.4	4.5	-93.18	162.5	116.7	58.4	49.6	8.88	6.579					
1,200.0	1,157.1	1,199.1	1,154.1	5.3	5.4	-91.42	199.8	146.1	65.1	54.4	10.67	6.101					
1,300.0	1,243.0	1,298.5	1,238.9	6.3	6.4	-89.98	240.6	178.1	71.8	59.2	12.64	5.681					
1,400.0	1,326.0	1,397.8	1,320.8	7.4	7.5	-88.79	284.8	212.8	78.5	63.7	14.78	5.311					
1,500.0	1,406.2	1,497.1	1,399.7	8.5	8.6	-87.84	332.2	250.1	85.1	68.1	17.07	4.988					
1,600.0	1,485.2	1,596.1	1,475.1	9.7	9.9	-85.33	382.7	289.7	92.3	72.9	19.39	4.758 SF					

Anticollision Report

Company:	EnCana Oil & Gas (USA) Inc	Local Co-ordinate Reference:	Well NP MF06E-3 O04 696 (was 11B-3)
Project:	North Piceance	TVD Reference:	WELL @ 6044.0ft (Original Well Elev)
Reference Site:	O04 696 (3rd)	MD Reference:	WELL @ 6044.0ft (Original Well Elev)
Site Error:	0.0ft	North Reference:	True
Reference Well:	NP MF06E-3 O04 696 (was 11B-3)	Survey Calculation Method:	Minimum Curvature
Well Error:	0.0ft	Output errors are at	2.00 sigma
Reference Wellbore	DD	Database:	EDM 5000.1 US Multi Users DB
Reference Design:	Plan #2	Offset TVD Reference:	Offset Datum

Offset Design O04 696 (3rd) - NP MF06C-3 O04 696 (was 09C-4) - DD - Plan #2												Offset Site Error:	0.0 ft
Survey Program: 0-MWD												Offset Well Error:	0.0 ft
Reference		Offset		Semi Major Axis		Highside Toolface (°)	Distance		Total Uncertainty Axis	Separation Factor	Warning		
Measured Depth (ft)	Vertical Depth (ft)	Measured Depth (ft)	Vertical Depth (ft)	Reference (ft)	Offset (ft)		Offset Wellbore Centre +N/-S (ft)	+E/-W (ft)					
0.0	0.0	0.0	0.0	0.0	0.0	-54.31	5.1	-7.0	8.7				
100.0	100.0	100.0	100.0	0.1	0.1	-54.31	5.1	-7.0	8.7	8.4	0.27	31.878	
200.0	200.0	200.0	200.0	0.3	0.3	-54.31	5.1	-7.0	8.7	8.1	0.62	13.969	CC, ES
300.0	300.0	299.6	299.6	0.5	0.5	-122.83	7.7	-7.1	11.6	10.7	0.98	11.861	
400.0	399.6	399.0	398.7	0.7	0.7	-123.30	15.3	-7.0	20.3	18.9	1.39	14.623	
500.0	498.8	498.7	497.6	1.0	1.0	-116.55	26.9	-4.1	31.1	29.2	1.89	16.445	
600.0	597.2	598.6	596.1	1.3	1.3	-110.71	42.1	2.7	41.3	38.8	2.54	16.243	
700.0	694.6	698.6	693.8	1.8	1.7	-107.23	60.8	13.3	50.9	47.5	3.37	15.109	
800.0	790.7	798.9	790.5	2.3	2.2	-104.97	82.9	27.6	59.7	55.3	4.37	13.663	
900.0	885.3	899.3	885.9	2.9	2.8	-103.42	108.5	45.8	67.7	62.2	5.55	12.199	
1,000.0	978.0	999.8	979.6	3.6	3.5	-102.32	137.5	67.6	75.0	68.1	6.92	10.836	
1,100.0	1,068.7	1,100.6	1,071.5	4.4	4.2	-101.54	169.8	93.2	81.5	73.0	8.48	9.612	
1,200.0	1,157.1	1,201.4	1,161.3	5.3	5.1	-100.99	205.3	122.4	87.1	76.9	10.21	8.529	
1,300.0	1,243.0	1,302.4	1,248.6	6.3	6.0	-100.62	244.0	155.1	91.9	79.8	12.13	7.576	
1,400.0	1,326.0	1,403.5	1,333.3	7.4	7.1	-100.40	285.8	191.4	95.9	81.7	14.23	6.737	
1,500.0	1,406.2	1,504.8	1,415.0	8.5	8.2	-100.34	330.4	231.0	99.0	82.5	16.49	6.002	SF

Anticollision Report

Company:	EnCana Oil & Gas (USA) Inc	Local Co-ordinate Reference:	Well NP MF06E-3 O04 696 (was 11B-3)
Project:	North Piceance	TVD Reference:	WELL @ 6044.0ft (Original Well Elev)
Reference Site:	O04 696 (3rd)	MD Reference:	WELL @ 6044.0ft (Original Well Elev)
Site Error:	0.0ft	North Reference:	True
Reference Well:	NP MF06E-3 O04 696 (was 11B-3)	Survey Calculation Method:	Minimum Curvature
Well Error:	0.0ft	Output errors are at	2.00 sigma
Reference Wellbore	DD	Database:	EDM 5000.1 US Multi Users DB
Reference Design:	Plan #2	Offset TVD Reference:	Offset Datum

Offset Design O04 696 (3rd) - NP MF11A-3 O04 696 (was 12C-3) - DD - Plan #2													Offset Site Error:	0.0 ft
Survey Program: 0-MWD													Offset Well Error:	0.0 ft
Reference		Offset		Semi Major Axis			Distance				Total		Warning	
Measured Depth (ft)	Vertical Depth (ft)	Measured Depth (ft)	Vertical Depth (ft)	Reference (ft)	Offset (ft)	Highside Toolface (°)	Offset Wellbore Centre +N/-S (ft)	+E/-W (ft)	Between Centres (ft)	Between Ellipses (ft)	Uncertainty Axis	Separation Factor		
0.0	0.0	0.0	0.0	0.0	0.0	-137.89	-6.1	-5.5	8.2					
100.0	100.0	100.0	100.0	0.1	0.1	-137.89	-6.1	-5.5	8.2	7.9	0.27	30.033		
200.0	200.0	200.0	200.0	0.3	0.3	-137.89	-6.1	-5.5	8.2	7.6	0.62	13.160 CC, ES		
300.0	300.0	300.0	300.0	0.5	0.5	160.28	-6.1	-5.5	10.6	9.6	0.97	10.914		
400.0	399.6	400.5	400.4	0.7	0.7	171.44	-4.0	-3.8	15.7	14.4	1.32	11.890		
500.0	498.8	501.1	500.7	1.0	0.9	-171.58	2.0	1.3	21.5	19.8	1.67	12.835		
600.0	597.2	602.0	600.7	1.3	1.2	-159.63	12.2	9.8	27.7	25.7	2.08	13.308		
700.0	694.6	703.0	700.0	1.8	1.5	-152.23	26.4	21.7	34.1	31.5	2.60	13.151		
800.0	790.7	804.3	798.4	2.3	2.0	-147.22	44.6	37.1	40.5	37.3	3.24	12.512		
900.0	885.3	905.7	895.6	2.9	2.5	-143.60	66.9	55.7	46.9	42.9	4.04	11.616		
1,000.0	978.0	1,007.7	991.6	3.6	3.1	-141.02	93.1	77.9	53.1	48.1	4.98	10.661		
1,100.0	1,068.7	1,110.3	1,086.4	4.4	3.8	-140.48	121.9	104.8	58.1	52.1	5.95	9.757		
1,200.0	1,157.1	1,213.2	1,179.3	5.3	4.7	-141.84	152.9	136.3	61.7	54.8	6.85	9.009		
1,300.0	1,243.0	1,316.4	1,270.0	6.3	5.6	-144.89	186.0	172.5	64.1	56.6	7.54	8.500		
1,400.0	1,326.0	1,419.6	1,358.1	7.4	6.6	-149.58	221.1	213.2	65.7	57.8	7.87	8.344 SF		
1,500.0	1,406.2	1,522.1	1,442.8	8.5	7.8	-155.95	257.7	258.0	66.9	59.2	7.65	8.745		
1,600.0	1,485.2	1,621.8	1,524.1	9.7	8.8	-162.76	293.8	302.8	68.8	61.7	7.08	9.721		
1,700.0	1,564.3	1,721.4	1,605.5	10.8	9.9	-169.13	330.0	347.6	71.6	65.1	6.48	11.048		
1,800.0	1,643.4	1,821.1	1,686.8	12.0	11.0	-174.95	366.1	392.4	75.3	69.0	6.21	12.115		
1,900.0	1,722.4	1,920.7	1,768.2	13.2	12.1	179.82	402.2	437.2	79.6	73.0	6.57	12.109		
2,000.0	1,801.5	2,020.4	1,849.5	14.3	13.2	175.15	438.3	482.0	84.5	76.9	7.62	11.089		
2,100.0	1,880.6	2,120.0	1,930.9	15.5	14.3	171.03	474.5	526.8	90.0	80.8	9.19	9.790		
2,200.0	1,959.7	2,219.7	2,012.2	16.7	15.4	167.39	510.6	571.6	95.8	84.8	11.08	8.654		

Anticollision Report

Company:	EnCana Oil & Gas (USA) Inc	Local Co-ordinate Reference:	Well NP MF06E-3 O04 696 (was 11B-3)
Project:	North Piceance	TVD Reference:	WELL @ 6044.0ft (Original Well Elev)
Reference Site:	O04 696 (3rd)	MD Reference:	WELL @ 6044.0ft (Original Well Elev)
Site Error:	0.0ft	North Reference:	True
Reference Well:	NP MF06E-3 O04 696 (was 11B-3)	Survey Calculation Method:	Minimum Curvature
Well Error:	0.0ft	Output errors are at	2.00 sigma
Reference Wellbore	DD	Database:	EDM 5000.1 US Multi Users DB
Reference Design:	Plan #2	Offset TVD Reference:	Offset Datum

Offset Design O04 696 (3rd) - NP MF11B-3 O04 696 (was 14A-3) - DD - Plan #2													Offset Site Error:	0.0 ft
Survey Program: 0-MWD													Offset Well Error:	0.0 ft
Reference		Offset		Semi Major Axis			Distance							
Measured Depth (ft)	Vertical Depth (ft)	Measured Depth (ft)	Vertical Depth (ft)	Reference (ft)	Offset (ft)	Highside Toolface (°)	Offset Wellbore Centre +N/-S (ft)	+E/-W (ft)	Between Centres (ft)	Between Ellipses (ft)	Total Uncertainty Axis	Separation Factor	Warning	
0.0	0.0	0.0	0.0	0.0	0.0	-141.01	-22.3	-18.0	28.6					
100.0	100.0	100.0	100.0	0.1	0.1	-141.01	-22.3	-18.0	28.6	28.4	0.27	105.163		
200.0	200.0	200.0	200.0	0.3	0.3	-141.01	-22.3	-18.0	28.6	28.0	0.62	46.083		
300.0	300.0	301.5	301.4	0.5	0.5	152.23	-20.7	-15.8	28.4	27.4	0.97	29.087		
400.0	399.6	402.9	402.5	0.7	0.7	156.09	-15.9	-9.4	27.6	26.3	1.33	20.705		
500.0	498.8	504.3	503.0	1.0	1.0	167.79	-7.9	1.4	26.7	25.0	1.68	15.851		
600.0	597.2	605.7	602.6	1.3	1.4	176.73	3.3	16.5	25.8	23.8	2.03	12.740		
700.0	694.6	707.0	701.1	1.8	1.9	-179.21	17.5	35.8	24.8	22.4	2.37	10.462		
800.0	790.7	808.3	798.0	2.3	2.4	-179.30	34.9	59.2	23.5	20.8	2.72	8.661		
900.0	885.3	909.4	893.2	2.9	3.1	176.41	55.2	86.7	22.2	19.1	3.13	7.095		
1,000.0	978.0	1,010.5	986.4	3.6	3.8	167.66	78.5	118.2	21.3	17.4	3.92	5.445		
1,037.5	1,012.3	1,048.4	1,020.7	3.9	4.1	163.27	88.0	131.0	21.2	16.8	4.43	4.799 CC		
1,100.0	1,068.7	1,111.4	1,077.2	4.4	4.7	154.94	104.6	153.5	21.6	16.0	5.60	3.852		
1,200.0	1,157.1	1,212.1	1,165.4	5.3	5.6	140.51	133.5	192.6	23.6	15.4	8.21	2.879 ES		
1,300.0	1,243.0	1,312.6	1,250.8	6.3	6.7	127.41	165.1	235.3	28.0	16.8	11.20	2.500		
1,400.0	1,326.0	1,412.9	1,333.0	7.4	7.8	117.23	199.2	281.4	34.5	20.4	14.14	2.443 SF		
1,500.0	1,406.2	1,512.8	1,412.1	8.5	9.0	110.35	235.5	330.4	43.0	26.1	16.89	2.547		
1,600.0	1,485.2	1,612.3	1,490.4	9.7	10.2	106.50	272.0	379.8	52.4	33.0	19.42	2.700		
1,700.0	1,564.3	1,711.8	1,568.6	10.8	11.4	103.83	308.6	429.2	62.0	40.1	21.88	2.833		
1,800.0	1,643.4	1,811.3	1,646.9	12.0	12.6	101.88	345.1	478.7	71.7	47.4	24.31	2.948		
1,900.0	1,722.4	1,910.8	1,725.1	13.2	13.8	100.39	381.7	528.1	81.4	54.7	26.71	3.047		
2,000.0	1,801.5	2,010.3	1,803.4	14.3	15.0	99.22	418.2	577.5	91.2	62.1	29.11	3.132		

Anticollision Report

Company:	EnCana Oil & Gas (USA) Inc	Local Co-ordinate Reference:	Well NP MF06E-3 O04 696 (was 11B-3)
Project:	North Piceance	TVD Reference:	WELL @ 6044.0ft (Original Well Elev)
Reference Site:	O04 696 (3rd)	MD Reference:	WELL @ 6044.0ft (Original Well Elev)
Site Error:	0.0ft	North Reference:	True
Reference Well:	NP MF06E-3 O04 696 (was 11B-3)	Survey Calculation Method:	Minimum Curvature
Well Error:	0.0ft	Output errors are at	2.00 sigma
Reference Wellbore	DD	Database:	EDM 5000.1 US Multi Users DB
Reference Design:	Plan #2	Offset TVD Reference:	Offset Datum

Offset Design O04 696 (3rd) - NP MF11D-3 O04 696 (was 14B-3) - DD - Plan #2													Offset Site Error:	0.0 ft
Survey Program: 0-MWD													Offset Well Error:	0.0 ft
Reference		Offset		Semi Major Axis			Distance							Warning
Measured Depth (ft)	Vertical Depth (ft)	Measured Depth (ft)	Vertical Depth (ft)	Reference (ft)	Offset (ft)	Highside Toolface (°)	Offset Wellbore Centre +N/-S (ft)	+E/-W (ft)	Between Centres (ft)	Between Ellipses (ft)	Total Uncertainty Axis	Separation Factor		
0.0	0.0	0.0	0.0	0.0	0.0	-141.27	-28.3	-22.7	36.3					
100.0	100.0	100.0	100.0	0.1	0.1	-141.27	-28.3	-22.7	36.3	36.0	0.27	133.355		
200.0	200.0	200.0	200.0	0.3	0.3	-141.27	-28.3	-22.7	36.3	35.7	0.62	58.437		
300.0	300.0	301.8	301.8	0.5	0.5	151.23	-27.0	-20.4	36.1	35.1	0.98	36.987		
400.0	399.6	403.6	403.2	0.7	0.7	152.75	-22.9	-13.3	35.5	34.2	1.34	26.472		
500.0	498.8	505.4	504.1	1.0	1.0	160.57	-16.2	-1.6	34.8	33.0	1.72	20.246		
600.0	597.2	607.1	604.0	1.3	1.4	164.89	-6.8	14.8	34.1	32.0	2.11	16.148		
700.0	694.6	708.7	702.7	1.8	1.9	163.78	5.2	35.7	33.8	31.2	2.59	13.031		
708.3	702.6	717.2	710.9	1.8	1.9	163.48	6.3	37.6	33.8	31.1	2.64	12.786 CC		
800.0	790.7	810.2	799.9	2.3	2.4	158.43	19.8	61.1	34.2	30.9	3.29	10.379 ES		
900.0	885.3	911.6	895.2	2.9	3.1	150.05	36.9	90.9	36.0	31.6	4.40	8.181		
1,000.0	978.0	1,012.6	988.3	3.6	3.9	140.31	56.4	125.0	39.9	33.9	5.98	6.669		
1,100.0	1,068.7	1,113.4	1,079.0	4.4	4.7	130.93	78.3	163.1	46.3	38.3	7.92	5.842		
1,200.0	1,157.1	1,213.8	1,166.8	5.3	5.7	122.95	102.5	205.2	55.2	45.2	10.06	5.491 SF		
1,300.0	1,243.0	1,313.0	1,252.2	6.3	6.6	118.40	127.7	249.2	67.2	55.0	12.13	5.539		
1,400.0	1,326.0	1,411.9	1,337.2	7.4	7.6	118.26	152.9	293.0	82.2	68.2	14.00	5.875		

Anticollision Report

Company:	EnCana Oil & Gas (USA) Inc	Local Co-ordinate Reference:	Well NP MF06E-3 O04 696 (was 11B-3)
Project:	North Piceance	TVD Reference:	WELL @ 6044.0ft (Original Well Elev)
Reference Site:	O04 696 (3rd)	MD Reference:	WELL @ 6044.0ft (Original Well Elev)
Site Error:	0.0ft	North Reference:	True
Reference Well:	NP MF06E-3 O04 696 (was 11B-3)	Survey Calculation Method:	Minimum Curvature
Well Error:	0.0ft	Output errors are at	2.00 sigma
Reference Wellbore	DD	Database:	EDM 5000.1 US Multi Users DB
Reference Design:	Plan #2	Offset TVD Reference:	Offset Datum

Offset Design													O04 696 (3rd) - NP MF11E-3 O04 696 (was 13A-3) - DD - Plan #2		Offset Site Error:		0.0 ft
Survey Program:													0-MWD		Offset Well Error:		0.0 ft
Reference		Offset		Semi Major Axis			Distance										
Measured Depth (ft)	Vertical Depth (ft)	Measured Depth (ft)	Vertical Depth (ft)	Reference (ft)	Offset (ft)	Highside Toolface (°)	Offset Wellbore Centre +N/-S (ft)	+E/-W (ft)	Between Centres (ft)	Between Ellipses (ft)	Total Uncertainty Axis	Separation Factor	Warning				
0.0	0.0	0.0	0.0	0.0	0.0	-133.54	-39.5	-41.5	57.3								
100.0	100.0	100.0	100.0	0.1	0.1	-133.54	-39.5	-41.5	57.3	57.0	0.27	210.351					
200.0	200.0	200.0	200.0	0.3	0.3	-133.54	-39.5	-41.5	57.3	56.7	0.62	92.176					
300.0	300.0	302.9	302.9	0.5	0.5	158.56	-38.3	-39.0	57.2	56.2	0.98	58.485					
400.0	399.6	405.8	405.4	0.7	0.7	158.87	-34.8	-31.5	56.8	55.5	1.34	42.347					
500.0	498.8	508.7	507.4	1.0	1.0	164.92	-29.0	-18.9	56.3	54.6	1.72	32.803					
600.0	597.2	611.5	608.4	1.3	1.4	168.03	-20.9	-1.4	55.9	53.8	2.12	26.384					
649.8	645.8	662.7	658.2	1.6	1.6	167.76	-16.0	9.1	55.8	53.5	2.35	23.757	CC				
700.0	694.6	714.2	708.0	1.8	1.9	166.51	-10.5	20.9	55.9	53.3	2.61	21.451	ES				
800.0	790.7	816.6	806.0	2.3	2.5	161.62	2.0	48.0	56.9	53.6	3.30	17.271					
900.0	885.3	918.7	901.8	2.9	3.2	154.38	16.7	79.7	59.7	55.4	4.34	13.773					
1,000.0	978.0	1,020.3	995.3	3.6	3.9	146.00	33.5	115.9	65.0	59.2	5.80	11.205					
1,100.0	1,068.7	1,121.5	1,086.2	4.4	4.8	137.63	52.2	156.3	73.3	65.7	7.65	9.591					
1,200.0	1,157.1	1,221.8	1,173.8	5.3	5.8	130.20	72.7	200.6	84.9	75.1	9.72	8.726	SF				

Anticollision Report

Company:	EnCana Oil & Gas (USA) Inc	Local Co-ordinate Reference:	Well NP MF06E-3 O04 696 (was 11B-3)
Project:	North Piceance	TVD Reference:	WELL @ 6044.0ft (Original Well Elev)
Reference Site:	O04 696 (3rd)	MD Reference:	WELL @ 6044.0ft (Original Well Elev)
Site Error:	0.0ft	North Reference:	True
Reference Well:	NP MF06E-3 O04 696 (was 11B-3)	Survey Calculation Method:	Minimum Curvature
Well Error:	0.0ft	Output errors are at	2.00 sigma
Reference Wellbore	DD	Database:	EDM 5000.1 US Multi Users DB
Reference Design:	Plan #2	Offset TVD Reference:	Offset Datum

Offset Design													Offset Site Error:		0.0 ft
Survey Program: 0-MWD													Offset Well Error:		0.0 ft
Reference		Offset		Semi Major Axis			Distance							Warning	
Measured Depth Depth (ft)	Vertical Depth (ft)	Measured Depth (ft)	Vertical Depth (ft)	Reference (ft)	Offset (ft)	Highside Toolface (°)	Offset Wellbore Centre +N/-S (ft)	+E/-W (ft)	Between Centres (ft)	Between Ellipses (ft)	Total Uncertainty Axis	Separation Factor			
0.0	0.0	0.0	0.0	0.0	0.0	-134.57	-45.5	-46.2	64.9						
100.0	100.0	100.0	100.0	0.1	0.1	-134.57	-45.5	-46.2	64.9	64.6	0.27	238.261			
200.0	200.0	200.0	200.0	0.3	0.3	-134.57	-45.5	-46.2	64.9	64.3	0.62	104.407	CC, ES		
300.0	300.0	300.0	300.0	0.5	0.5	158.26	-45.5	-46.2	67.3	66.3	0.97	69.318			
400.0	399.6	403.1	403.1	0.7	0.7	159.49	-44.8	-43.5	72.3	70.9	1.33	54.312			
500.0	498.8	506.5	506.1	1.0	0.9	165.73	-42.8	-35.4	77.5	75.8	1.70	45.559			
600.0	597.2	610.1	608.8	1.3	1.2	169.12	-39.4	-21.8	83.1	81.0	2.09	39.689			
700.0	694.6	713.7	710.5	1.8	1.6	168.45	-34.7	-2.9	89.5	87.0	2.55	35.089			
800.0	790.7	817.1	810.8	2.3	2.0	165.29	-28.6	21.3	97.3	94.2	3.14	30.984	SF		

Anticollision Report

Company:	EnCana Oil & Gas (USA) Inc	Local Co-ordinate Reference:	Well NP MF06E-3 O04 696 (was 11B-3)
Project:	North Piceance	TVD Reference:	WELL @ 6044.0ft (Original Well Elev)
Reference Site:	O04 696 (3rd)	MD Reference:	WELL @ 6044.0ft (Original Well Elev)
Site Error:	0.0ft	North Reference:	True
Reference Well:	NP MF06E-3 O04 696 (was 11B-3)	Survey Calculation Method:	Minimum Curvature
Well Error:	0.0ft	Output errors are at	2.00 sigma
Reference Wellbore	DD	Database:	EDM 5000.1 US Multi Users DB
Reference Design:	Plan #2	Offset TVD Reference:	Offset Datum

Offset Design													O04 696 (3rd) - NP MF14A-3 O04 696 (was 13B-3) - DD - Plan #2		Offset Site Error:		0.0 ft	
Survey Program:													0-MWD		Offset Well Error:		0.0 ft	
Reference		Offset		Semi Major Axis			Distance							Warning				
Measured Depth (ft)	Vertical Depth (ft)	Measured Depth (ft)	Vertical Depth (ft)	Reference (ft)	Offset (ft)	Highside Toolface (°)	Offset Wellbore Centre		Between Centres (ft)	Between Ellipses (ft)	Total Uncertainty Axis	Separation Factor						
							+N/-S (ft)	+E/-W (ft)										
0.0	0.0	0.0	0.0	0.0	0.0	-141.63	-44.5	-35.2	56.8									
100.0	100.0	100.0	100.0	0.1	0.1	-141.63	-44.5	-35.2	56.8	56.5	0.27	208.541	CC					
200.0	200.0	200.0	200.0	0.3	0.3	-141.63	-44.5	-35.2	56.8	56.2	0.62	91.383						
300.0	300.0	302.3	302.2	0.5	0.5	149.86	-44.1	-32.6	57.1	56.1	0.98	58.204	ES					
400.0	399.6	404.5	404.1	0.7	0.7	148.36	-42.7	-24.5	57.9	56.6	1.37	42.287						
500.0	498.8	506.6	505.3	1.0	1.0	151.57	-40.4	-11.0	59.7	57.9	1.82	32.800						
600.0	597.2	608.5	605.4	1.3	1.4	151.48	-37.2	7.7	63.3	60.9	2.39	26.516						
700.0	694.6	710.0	703.9	1.8	1.9	147.37	-33.1	31.5	69.6	66.4	3.15	22.102						
800.0	790.7	810.7	800.4	2.3	2.4	141.54	-28.2	60.2	79.4	75.2	4.15	19.112						
900.0	885.3	910.6	894.3	2.9	3.1	135.50	-22.5	93.6	93.1	87.7	5.39	17.263	SF					

Anticollision Report

Company:	EnCana Oil & Gas (USA) Inc	Local Co-ordinate Reference:	Well NP MF06E-3 O04 696 (was 11B-3)
Project:	North Piceance	TVD Reference:	WELL @ 6044.0ft (Original Well Elev)
Reference Site:	O04 696 (3rd)	MD Reference:	WELL @ 6044.0ft (Original Well Elev)
Site Error:	0.0ft	North Reference:	True
Reference Well:	NP MF06E-3 O04 696 (was 11B-3)	Survey Calculation Method:	Minimum Curvature
Well Error:	0.0ft	Output errors are at	2.00 sigma
Reference Wellbore	DD	Database:	EDM 5000.1 US Multi Users DB
Reference Design:	Plan #2	Offset TVD Reference:	Offset Datum

Offset Design O04 696 (3rd) - NP MF14C-3 O04 696 (was 14D-3) - DD - Plan #2													Offset Site Error:	0.0 ft
Survey Program: 0-MWD													Offset Well Error:	0.0 ft
Reference		Offset		Semi Major Axis			Distance							
Measured Depth (ft)	Vertical Depth (ft)	Measured Depth (ft)	Vertical Depth (ft)	Reference (ft)	Offset (ft)	Highside Toolface (°)	Offset Wellbore Centre +N/-S (ft)	+E/-W (ft)	Between Centres (ft)	Between Ellipses (ft)	Total Uncertainty Axis	Separation Factor	Warning	
0.0	0.0	0.0	0.0	0.0	0.0	-141.70	-50.6	-39.9	64.5					
100.0	100.0	100.0	100.0	0.1	0.1	-141.70	-50.6	-39.9	64.5	64.2	0.27	236.737 CC		
200.0	200.0	200.0	200.0	0.3	0.3	-141.70	-50.6	-39.9	64.5	63.8	0.62	103.739 ES		
300.0	300.0	302.2	302.1	0.5	0.5	149.60	-50.5	-37.2	65.0	64.1	0.98	66.250		
400.0	399.6	404.3	403.9	0.7	0.7	147.56	-50.4	-29.0	66.8	65.5	1.38	48.435		
500.0	498.8	506.2	504.9	1.0	1.0	150.13	-50.1	-15.5	70.2	68.4	1.85	37.932		
600.0	597.2	607.7	604.7	1.3	1.4	149.76	-49.8	3.4	76.3	73.9	2.45	31.159		
700.0	694.6	708.5	702.5	1.8	1.9	145.92	-49.4	27.3	86.0	82.8	3.23	26.633 SF		

Anticollision Report

Company:	EnCana Oil & Gas (USA) Inc	Local Co-ordinate Reference:	Well NP MF06E-3 O04 696 (was 11B-3)
Project:	North Piceance	TVD Reference:	WELL @ 6044.0ft (Original Well Elev)
Reference Site:	O04 696 (3rd)	MD Reference:	WELL @ 6044.0ft (Original Well Elev)
Site Error:	0.0ft	North Reference:	True
Reference Well:	NP MF06E-3 O04 696 (was 11B-3)	Survey Calculation Method:	Minimum Curvature
Well Error:	0.0ft	Output errors are at	2.00 sigma
Reference Wellbore	DD	Database:	EDM 5000.1 US Multi Users DB
Reference Design:	Plan #2	Offset TVD Reference:	Offset Datum

Offset Design O04 696 (3rd) - NP MF14D-3 O04 696 (was 19A-3) - DD - Plan #2													Offset Site Error:	0.0 ft
Survey Program: 0-MWD													Offset Well Error:	0.0 ft
Reference		Offset		Semi Major Axis			Distance						Warning	
Measured Depth (ft)	Vertical Depth (ft)	Measured Depth (ft)	Vertical Depth (ft)	Reference (ft)	Offset (ft)	Highside Toolface (°)	Offset Wellbore Centre +N/-S (ft)	+E/-W (ft)	Between Centres (ft)	Between Ellipses (ft)	Total Uncertainty Axis	Separation Factor		
0.0	0.0	0.0	0.0	0.0	0.0	-135.94	-60.7	-58.7	84.5					
100.0	100.0	100.0	100.0	0.1	0.1	-135.94	-60.7	-58.7	84.5	84.2	0.27	310.260		
200.0	200.0	200.0	200.0	0.3	0.3	-135.94	-60.7	-58.7	84.5	83.9	0.62	135.957 CC, ES		
300.0	300.0	300.0	300.0	0.5	0.5	156.73	-60.7	-58.7	86.9	85.9	0.97	89.468		
400.0	399.6	402.9	402.9	0.7	0.7	157.33	-60.9	-56.0	92.4	91.0	1.33	69.230		
500.0	498.8	506.0	505.6	1.0	0.9	162.45	-61.6	-47.7	99.3	97.5	1.72	57.620 SF		

Anticollision Report

Company:	EnCana Oil & Gas (USA) Inc	Local Co-ordinate Reference:	Well NP MF06E-3 O04 696 (was 11B-3)
Project:	North Piceance	TVD Reference:	WELL @ 6044.0ft (Original Well Elev)
Reference Site:	O04 696 (3rd)	MD Reference:	WELL @ 6044.0ft (Original Well Elev)
Site Error:	0.0ft	North Reference:	True
Reference Well:	NP MF06E-3 O04 696 (was 11B-3)	Survey Calculation Method:	Minimum Curvature
Well Error:	0.0ft	Output errors are at	2.00 sigma
Reference Wellbore	DD	Database:	EDM 5000.1 US Multi Users DB
Reference Design:	Plan #2	Offset TVD Reference:	Offset Datum

Offset Design O04 696 (3rd) - NP MF14E-3 O04 696 (was 19B-3) - DD - Plan #2													Offset Site Error: 0.0 ft
Survey Program: 0-MWD													Offset Well Error: 0.0 ft
Reference		Offset		Semi Major Axis			Distance						Warning
Measured Depth (ft)	Vertical Depth (ft)	Measured Depth (ft)	Vertical Depth (ft)	Reference (ft)	Offset (ft)	Highside Toolface (°)	Offset Wellbore Centre +N/-S (ft)	+E/-W (ft)	Between Centres (ft)	Between Ellipses (ft)	Total Uncertainty Axis	Separation Factor	
0.0	0.0	0.0	0.0	0.0	0.0	-141.41	-65.8	-52.5	84.1				
100.0	100.0	100.0	100.0	0.1	0.1	-141.41	-65.8	-52.5	84.1	83.9	0.27	309.014	
200.0	200.0	200.0	200.0	0.3	0.3	-141.41	-65.8	-52.5	84.1	83.5	0.62	135.411 CC, ES	
300.0	300.0	301.8	301.7	0.5	0.5	149.78	-66.5	-49.9	85.4	84.4	0.98	86.843	
400.0	399.6	403.3	402.9	0.7	0.7	147.49	-68.6	-42.0	89.1	87.8	1.39	64.104	
500.0	498.8	504.5	503.2	1.0	1.0	149.94	-72.1	-29.1	95.9	94.0	1.88	51.031 SF	

Anticollision Report

Company:	EnCana Oil & Gas (USA) Inc	Local Co-ordinate Reference:	Well NP MF06E-3 O04 696 (was 11B-3)
Project:	North Piceance	TVD Reference:	WELL @ 6044.0ft (Original Well Elev)
Reference Site:	O04 696 (3rd)	MD Reference:	WELL @ 6044.0ft (Original Well Elev)
Site Error:	0.0ft	North Reference:	True
Reference Well:	NP MF06E-3 O04 696 (was 11B-3)	Survey Calculation Method:	Minimum Curvature
Well Error:	0.0ft	Output errors are at	2.00 sigma
Reference Wellbore	DD	Database:	EDM 5000.1 US Multi Users DB
Reference Design:	Plan #2	Offset TVD Reference:	Offset Datum

Offset Design O04 696 (3rd) - NP MF15A-4 O04 696 (was 11D-3) - DD - Plan #2													Offset Site Error:	0.0 ft
Survey Program: 0-MWD													Offset Well Error:	0.0 ft
Reference		Offset		Semi Major Axis			Distance						Warning	
Measured Depth (ft)	Vertical Depth (ft)	Measured Depth (ft)	Vertical Depth (ft)	Reference (ft)	Offset (ft)	Highside Toolface (°)	Offset Wellbore Centre +N/-S (ft)	+E/-W (ft)	Between Centres (ft)	Between Ellipses (ft)	Total Uncertainty Axis	Separation Factor		
0.0	0.0	0.0	0.0	0.0	0.0	-128.76	-23.3	-29.0	37.2					
100.0	100.0	100.0	100.0	0.1	0.1	-128.76	-23.3	-29.0	37.2	36.9	0.27	136.501		
200.0	200.0	200.0	200.0	0.3	0.3	-128.76	-23.3	-29.0	37.2	36.5	0.62	59.815 CC, ES		
300.0	300.0	300.6	300.6	0.5	0.5	167.97	-20.7	-29.7	38.8	37.8	0.98	39.618		
400.0	399.6	400.5	400.1	0.7	0.7	179.67	-13.2	-31.9	45.0	43.6	1.37	32.814		
500.0	498.8	499.0	497.8	1.0	1.0	-161.62	-0.8	-35.5	57.8	56.0	1.83	31.672 SF		
600.0	597.2	596.0	593.2	1.3	1.3	-147.20	16.0	-40.4	77.1	74.7	2.39	32.297		

Anticollision Report

Company:	EnCana Oil & Gas (USA) Inc	Local Co-ordinate Reference:	Well NP MF06E-3 O04 696 (was 11B-3)
Project:	North Piceance	TVD Reference:	WELL @ 6044.0ft (Original Well Elev)
Reference Site:	O04 696 (3rd)	MD Reference:	WELL @ 6044.0ft (Original Well Elev)
Site Error:	0.0ft	North Reference:	True
Reference Well:	NP MF06E-3 O04 696 (was 11B-3)	Survey Calculation Method:	Minimum Curvature
Well Error:	0.0ft	Output errors are at	2.00 sigma
Reference Wellbore	DD	Database:	EDM 5000.1 US Multi Users DB
Reference Design:	Plan #2	Offset TVD Reference:	Offset Datum

Offset Design													Offset Site Error:		0.0 ft
Survey Program: 0-MWD													Offset Well Error:		0.0 ft
Reference		Offset		Semi Major Axis			Distance							Warning	
Measured Depth	Vertical Depth	Measured Depth	Vertical Depth	Reference	Offset	Highside Toolface	Offset Wellbore Centre		Between Centres	Between Ellipses	Total Uncertainty	Separation			
(ft)	(ft)	(ft)	(ft)	(ft)	(ft)	(°)	+N/-S (ft)	+E/-W (ft)	(ft)	(ft)	Axis	Factor			
0.0	0.0	0.0	0.0	0.0	0.0	-136.89	-67.8	-63.4	92.8						
100.0	100.0	100.0	100.0	0.1	0.1	-136.89	-67.8	-63.4	92.8	92.6	0.27	341.004			
200.0	200.0	200.0	200.0	0.3	0.3	-136.89	-67.8	-63.4	92.8	92.2	0.62	149.429 CC, ES			
300.0	300.0	300.8	300.8	0.5	0.5	155.37	-68.0	-62.8	95.0	94.0	0.97	97.596 SF			

Anticollision Report

Company:	EnCana Oil & Gas (USA) Inc	Local Co-ordinate Reference:	Well NP MF06E-3 O04 696 (was 11B-3)
Project:	North Piceance	TVD Reference:	WELL @ 6044.0ft (Original Well Elev)
Reference Site:	O04 696 (3rd)	MD Reference:	WELL @ 6044.0ft (Original Well Elev)
Site Error:	0.0ft	North Reference:	True
Reference Well:	NP MF06E-3 O04 696 (was 11B-3)	Survey Calculation Method:	Minimum Curvature
Well Error:	0.0ft	Output errors are at	2.00 sigma
Reference Wellbore	DD	Database:	EDM 5000.1 US Multi Users DB
Reference Design:	Plan #2	Offset TVD Reference:	Offset Datum

Offset Design													Offset Site Error:		0.0 ft
Survey Program: 0-MWD													Offset Well Error:		0.0 ft
Reference		Offset		Semi Major Axis			Distance							Warning	
Measured Depth	Vertical Depth	Measured Depth	Vertical Depth	Reference	Offset	Highside Toolface	Offset Wellbore Centre		Between Centres	Between Ellipses	Total Uncertainty	Separation			
(ft)	(ft)	(ft)	(ft)	(ft)	(ft)	(°)	+N/-S (ft)	+E/-W (ft)	(ft)	(ft)	Axis	Factor			
0.0	0.0	0.0	0.0	0.0	0.0	-141.87	-72.8	-57.2	92.6						
100.0	100.0	100.0	100.0	0.1	0.1	-141.87	-72.8	-57.2	92.6	92.3	0.27	340.124			
200.0	200.0	200.0	200.0	0.3	0.3	-141.87	-72.8	-57.2	92.6	92.0	0.62	149.043 CC, ES			
300.0	300.0	300.6	300.6	0.5	0.5	149.30	-74.2	-54.9	94.5	93.5	0.98	96.286 SF			

Anticollision Report

Company:	EnCana Oil & Gas (USA) Inc	Local Co-ordinate Reference:	Well NP MF06E-3 O04 696 (was 11B-3)
Project:	North Piceance	TVD Reference:	WELL @ 6044.0ft (Original Well Elev)
Reference Site:	O04 696 (3rd)	MD Reference:	WELL @ 6044.0ft (Original Well Elev)
Site Error:	0.0ft	North Reference:	True
Reference Well:	NP MF06E-3 O04 696 (was 11B-3)	Survey Calculation Method:	Minimum Curvature
Well Error:	0.0ft	Output errors are at	2.00 sigma
Reference Wellbore	DD	Database:	EDM 5000.1 US Multi Users DB
Reference Design:	Plan #2	Offset TVD Reference:	Offset Datum

Reference Depths are relative to WELL @ 6044.0ft (Original Well Elev)

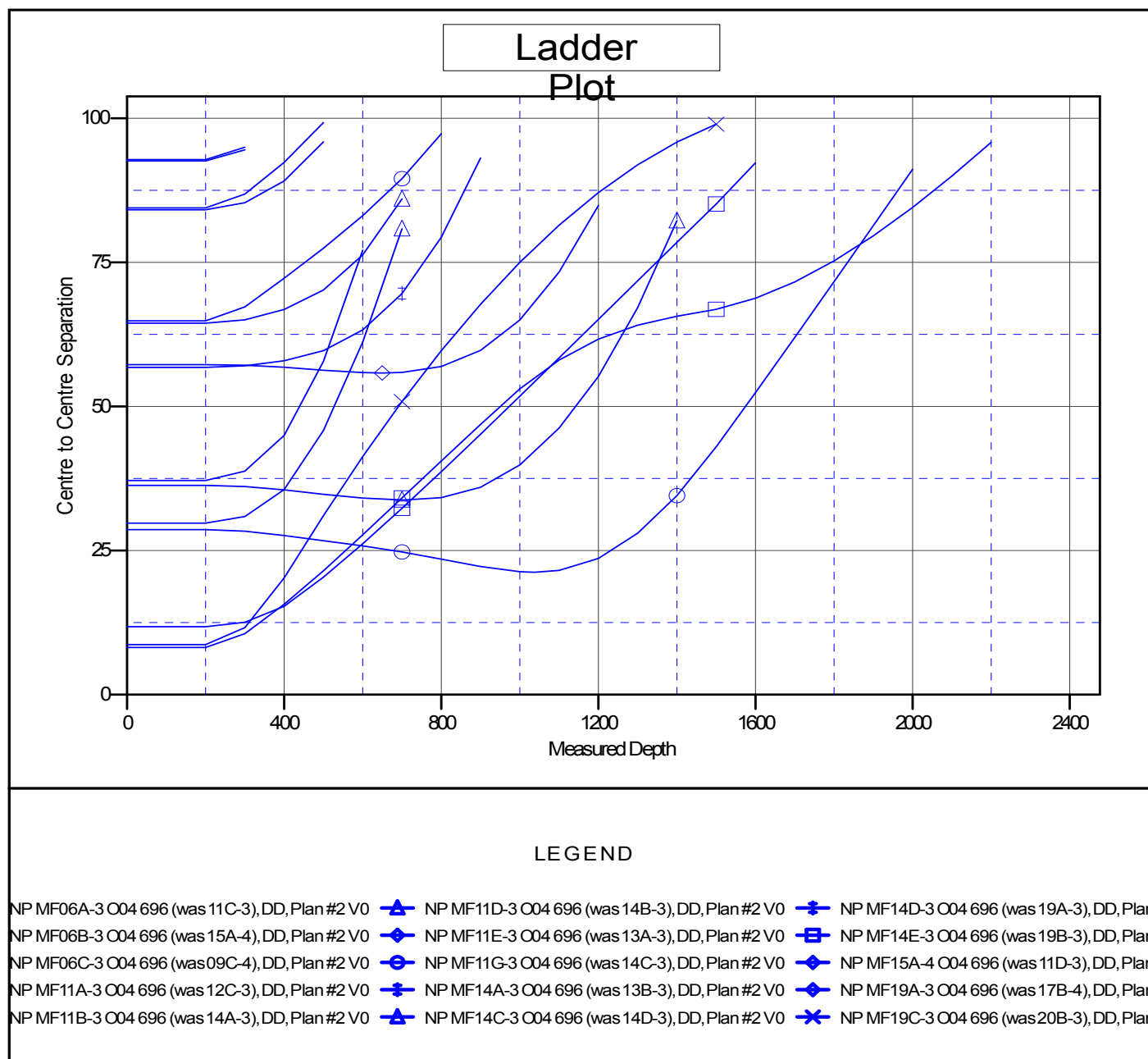
Offset Depths are relative to Offset Datum

Central Meridian is 105° 30' 0.00 W °

Coordinates are relative to: NP MF06E-3 O04 696 (was 11B-3)

Coordinate System is US State Plane 1983, Colorado Central Zone

Grid Convergence at Surface is: -1.64°



CC - Min centre to center distance or convergent point, SF - min separation factor, ES - min ellipse separation