

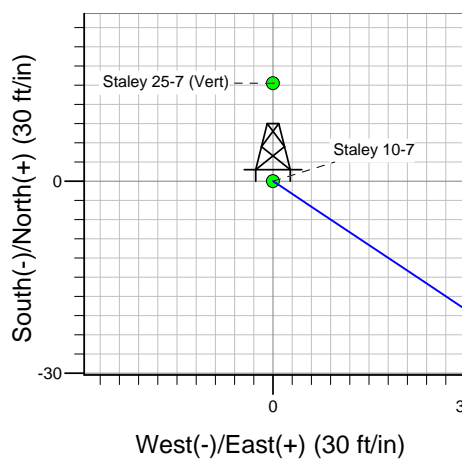
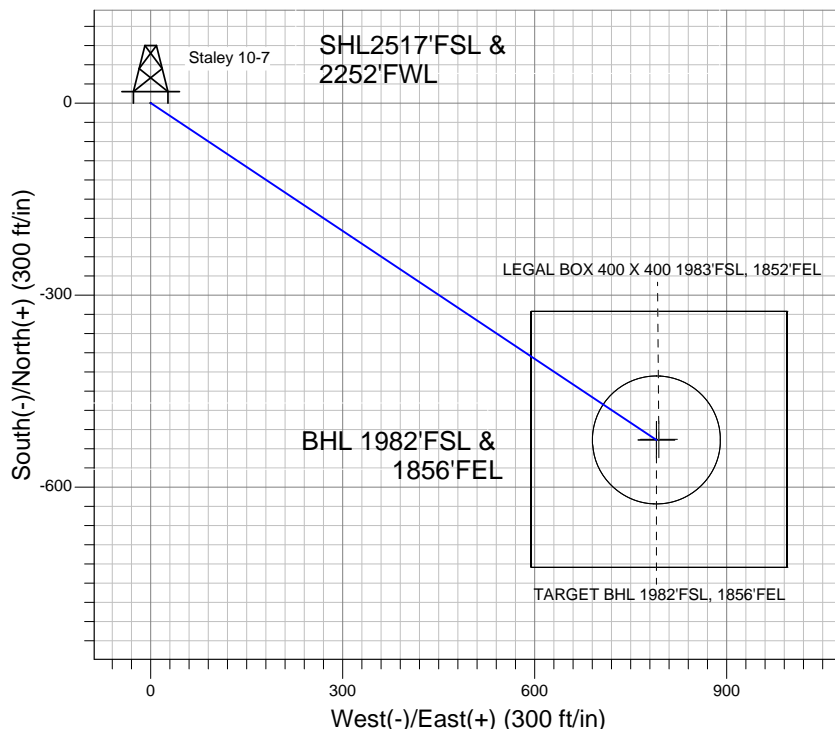
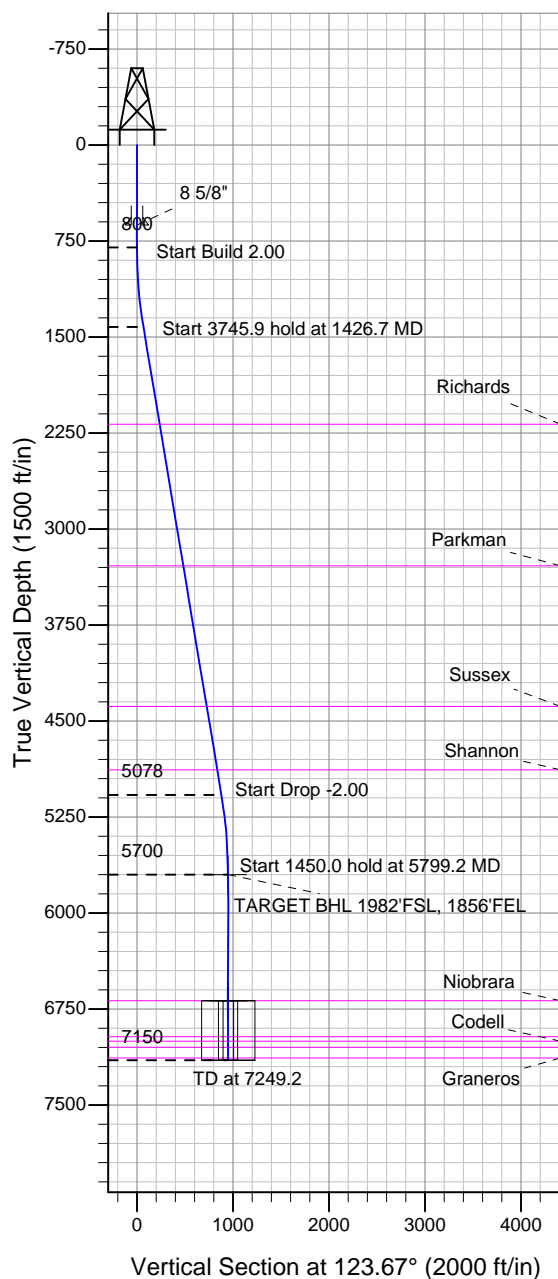
### Well Name: Staley 10-7

Surface Location: Staley 10-7 Pad Sec.7-T6N-R67W  
 North American Datum 1983 , US State Plane 1983 , Colorado Northern Zone  
 Ground Elevation: 4820.0

+N/-S	+E/-W	Northing	Easting	Latitude	Longitude	Slot
0.0	0.0	1425762.40	3156826.99	40.500750	-104.936066	

Original Well Elev WELL @ 4836.0ft (Original Well Elev)

## Bayswater Exploration & Production, LLC



Staley 10-7 Pad Sec.7-T6N-R67W  
 Staley 10-7  
 Plan #1 (5-16-13)  
 8:35, May 20 2013



Azimuths to True North  
 Magnetic North: 8.71°  
 Magnetic Field  
 Strength: 52963.7nT  
 Dip Angle: 67.04°  
 Date: 5/16/2013  
 Model: IGRF2010

### WELLBORE TARGET DETAILS (LAT/LONG)

Name	TVD	+N/-S	+E/-W	Latitude	Longitude	Shape
TARGET BHL 1982'FSL, 1856'FEL	5700.0	-526.4	790.1	40.499305	-104.933225	Point
LEGAL BOX 400 X 400 1983'FSL, 1852'FEL	6685.0	-525.4	794.1	40.499308	-104.933211	Rectangle (Sides: L400.0 W400.0)
TARGET CIRCLE 1982'FSL, 1856'FEL	6685.0	-526.4	790.1	40.499305	-104.933225	Circle (Radius: 100.0)

### SECTION DETAILS

Sec	MD	Inc	Azi	TVD	+N/-S	+E/-W	DLeg	TFace	VSec	Target
1	0.0	0.00	0.00	0.0	0.0	0.0	0.00	0.00	0.0	
2	800.0	0.00	0.00	800.0	0.0	0.0	0.00	0.00	0.0	
3	1426.7	12.53	123.67	1421.7	-37.9	56.8	2.00	123.67	68.3	
4	5172.6	12.53	123.67	5078.3	-488.6	733.3	0.00	0.00	881.2	
5	5799.2	0.00	0.00	5700.0	-526.4	790.1	2.00	180.00	949.4	TARGET BHL 1982'FSL, 1856'FEL
6	7249.2	0.00	0.00	7150.0	-526.4	790.1	0.00	0.00	949.4	



# **Bayswater Exploration & Production, LLC**

**SEC.7-T6N-R67W**

**Staley 10-7 Pad Sec.7-T6N-R67W**

**Staley 10-7**

**Wellbore #1**

**Plan: Plan #1 (5-16-13)**

## **Standard Planning Report**

**17 May, 2013**



<b>Database:</b>	Landmark	<b>Local Co-ordinate Reference:</b>	Well Staley 10-7
<b>Company:</b>	Bayswater Exploration & Production, LLC	<b>TVD Reference:</b>	WELL @ 4836.0ft (Original Well Elev)
<b>Project:</b>	SEC.7-T6N-R67W	<b>MD Reference:</b>	WELL @ 4836.0ft (Original Well Elev)
<b>Site:</b>	Staley 10-7 Pad Sec.7-T6N-R67W	<b>North Reference:</b>	True
<b>Well:</b>	Staley 10-7	<b>Survey Calculation Method:</b>	Minimum Curvature
<b>Wellbore:</b>	Wellbore #1		
<b>Design:</b>	Plan #1 (5-16-13)		

<b>Project</b>	SEC.7-T6N-R67W, Weld County, CO		
<b>Map System:</b>	US State Plane 1983	<b>System Datum:</b>	Mean Sea Level
<b>Geo Datum:</b>	North American Datum 1983		Using Well Reference Point
<b>Map Zone:</b>	Colorado Northern Zone		Using geodetic scale factor

Site	Staley 10-7 Pad Sec.7-T6N-R67W				
Site Position:		Northing:	1,425,762.40ft	Latitude:	40.500750
From:	Lat/Long	Easting:	3,156,826.99ft	Longitude:	-104.936066
Position Uncertainty:	0.0 ft	Slot Radius:	"	Grid Convergence:	0.36 °

Well	Staley 10-7					
Well Position	+N-S	0.0 ft	Northing:	1,425,762.40 ft	Latitude:	40.500750
	+E-W	0.0 ft	Easting:	3,156,826.99 ft	Longitude:	-104.936066
Position Uncertainty		0.0 ft	Wellhead Elevation:	ft	Ground Level:	4,820.0 ft

<b>Wellbore</b>	Wellbore #1				
<b>Magnetics</b>	<b>Model Name</b>	<b>Sample Date</b>	<b>Declination (°)</b>	<b>Dip Angle (°)</b>	<b>Field Strength (nT)</b>
	IGRF2010	5/16/2013	8.71	67.04	52,964

<b>Design</b>	Plan #1 (5-16-13)			
<b>Audit Notes:</b>				
<b>Version:</b>	<b>Phase:</b>	PROTOTYPE	<b>Tie On Depth:</b>	0.0
<b>Vertical Section:</b>	<b>Depth From (TVD) (ft)</b>	<b>+N/-S (ft)</b>	<b>+E/-W (ft)</b>	<b>Direction (°)</b>
	0.0	0.0	0.0	123.67

<b>Plan Sections</b>										
Measured Depth (ft)	Inclination (°)	Azimuth (°)	Vertical Depth (ft)	+N/-S (ft)	+E/-W (ft)	Dogleg Rate (°/100ft)	Build Rate (°/100ft)	Turn Rate (°/100ft)	TFO (°)	Target
0.0	0.00	0.00	0.0	0.0	0.0	0.00	0.00	0.00	0.00	
800.0	0.00	0.00	800.0	0.0	0.0	0.00	0.00	0.00	0.00	
1,426.7	12.53	123.67	1,421.7	-37.9	56.8	2.00	2.00	0.00	123.67	
5,172.6	12.53	123.67	5,078.3	-488.6	733.3	0.00	0.00	0.00	0.00	
5,799.2	0.00	0.00	5,700.0	-526.4	790.1	2.00	-2.00	0.00	180.00	TARGET BHL 1982
7,249.2	0.00	0.00	7,150.0	-526.4	790.1	0.00	0.00	0.00	0.00	

<b>Database:</b>	Landmark	<b>Local Co-ordinate Reference:</b>	Well Staley 10-7
<b>Company:</b>	Bayswater Exploration & Production, LLC	<b>TVD Reference:</b>	WELL @ 4836.0ft (Original Well Elev)
<b>Project:</b>	SEC.7-T6N-R67W	<b>MD Reference:</b>	WELL @ 4836.0ft (Original Well Elev)
<b>Site:</b>	Staley 10-7 Pad Sec.7-T6N-R67W	<b>North Reference:</b>	True
<b>Well:</b>	Staley 10-7	<b>Survey Calculation Method:</b>	Minimum Curvature
<b>Wellbore:</b>	Wellbore #1		
<b>Design:</b>	Plan #1 (5-16-13)		

Planned Survey									
Measured Depth (ft)	Inclination (°)	Azimuth (°)	Vertical Depth (ft)	+N/-S (ft)	+E/-W (ft)	Vertical Section (ft)	Dogleg Rate (°/100ft)	Build Rate (°/100ft)	Turn Rate (°/100ft)
0.0	0.00	0.00	0.0	0.0	0.0	0.0	0.00	0.00	0.00
40.0	0.00	0.00	40.0	0.0	0.0	0.0	0.00	0.00	0.00
80.0	0.00	0.00	80.0	0.0	0.0	0.0	0.00	0.00	0.00
120.0	0.00	0.00	120.0	0.0	0.0	0.0	0.00	0.00	0.00
160.0	0.00	0.00	160.0	0.0	0.0	0.0	0.00	0.00	0.00
200.0	0.00	0.00	200.0	0.0	0.0	0.0	0.00	0.00	0.00
240.0	0.00	0.00	240.0	0.0	0.0	0.0	0.00	0.00	0.00
280.0	0.00	0.00	280.0	0.0	0.0	0.0	0.00	0.00	0.00
320.0	0.00	0.00	320.0	0.0	0.0	0.0	0.00	0.00	0.00
360.0	0.00	0.00	360.0	0.0	0.0	0.0	0.00	0.00	0.00
400.0	0.00	0.00	400.0	0.0	0.0	0.0	0.00	0.00	0.00
440.0	0.00	0.00	440.0	0.0	0.0	0.0	0.00	0.00	0.00
480.0	0.00	0.00	480.0	0.0	0.0	0.0	0.00	0.00	0.00
520.0	0.00	0.00	520.0	0.0	0.0	0.0	0.00	0.00	0.00
560.0	0.00	0.00	560.0	0.0	0.0	0.0	0.00	0.00	0.00
600.0	0.00	0.00	600.0	0.0	0.0	0.0	0.00	0.00	0.00
625.0	0.00	0.00	625.0	0.0	0.0	0.0	0.00	0.00	0.00
8 5/8"									
640.0	0.00	0.00	640.0	0.0	0.0	0.0	0.00	0.00	0.00
680.0	0.00	0.00	680.0	0.0	0.0	0.0	0.00	0.00	0.00
720.0	0.00	0.00	720.0	0.0	0.0	0.0	0.00	0.00	0.00
760.0	0.00	0.00	760.0	0.0	0.0	0.0	0.00	0.00	0.00
800.0	0.00	0.00	800.0	0.0	0.0	0.0	0.00	0.00	0.00
840.0	0.80	123.67	840.0	-0.2	0.2	0.3	2.00	2.00	0.00
880.0	1.60	123.67	880.0	-0.6	0.9	1.1	2.00	2.00	0.00
920.0	2.40	123.67	920.0	-1.4	2.1	2.5	2.00	2.00	0.00
960.0	3.20	123.67	959.9	-2.5	3.7	4.5	2.00	2.00	0.00
1,000.0	4.00	123.67	999.8	-3.9	5.8	7.0	2.00	2.00	0.00
1,040.0	4.80	123.67	1,039.7	-5.6	8.4	10.0	2.00	2.00	0.00
1,080.0	5.60	123.67	1,079.6	-7.6	11.4	13.7	2.00	2.00	0.00
1,120.0	6.40	123.67	1,119.3	-9.9	14.9	17.9	2.00	2.00	0.00
1,160.0	7.20	123.67	1,159.1	-12.5	18.8	22.6	2.00	2.00	0.00
1,200.0	8.00	123.67	1,198.7	-15.5	23.2	27.9	2.00	2.00	0.00
1,240.0	8.80	123.67	1,238.3	-18.7	28.1	33.7	2.00	2.00	0.00
1,280.0	9.60	123.67	1,277.8	-22.2	33.4	40.1	2.00	2.00	0.00
1,320.0	10.40	123.67	1,317.1	-26.1	39.2	47.1	2.00	2.00	0.00
1,360.0	11.20	123.67	1,356.4	-30.3	45.4	54.6	2.00	2.00	0.00
1,400.0	12.00	123.67	1,395.6	-34.7	52.1	62.6	2.00	2.00	0.00
1,426.7	12.53	123.67	1,421.7	-37.9	56.8	68.3	2.00	2.00	0.00
1,440.0	12.53	123.67	1,434.7	-39.5	59.2	71.2	0.00	0.00	0.00
1,480.0	12.53	123.67	1,473.7	-44.3	66.4	79.8	0.00	0.00	0.00
1,520.0	12.53	123.67	1,512.8	-49.1	73.7	88.5	0.00	0.00	0.00
1,560.0	12.53	123.67	1,551.8	-53.9	80.9	97.2	0.00	0.00	0.00
1,600.0	12.53	123.67	1,590.9	-58.7	88.1	105.9	0.00	0.00	0.00
1,640.0	12.53	123.67	1,629.9	-63.5	95.3	114.6	0.00	0.00	0.00
1,680.0	12.53	123.67	1,669.0	-68.3	102.6	123.2	0.00	0.00	0.00
1,720.0	12.53	123.67	1,708.0	-73.1	109.8	131.9	0.00	0.00	0.00
1,760.0	12.53	123.67	1,747.1	-78.0	117.0	140.6	0.00	0.00	0.00
1,800.0	12.53	123.67	1,786.1	-82.8	124.2	149.3	0.00	0.00	0.00
1,840.0	12.53	123.67	1,825.2	-87.6	131.5	158.0	0.00	0.00	0.00
1,880.0	12.53	123.67	1,864.2	-92.4	138.7	166.6	0.00	0.00	0.00
1,920.0	12.53	123.67	1,903.3	-97.2	145.9	175.3	0.00	0.00	0.00
1,960.0	12.53	123.67	1,942.3	-102.0	153.1	184.0	0.00	0.00	0.00
2,000.0	12.53	123.67	1,981.4	-106.8	160.4	192.7	0.00	0.00	0.00

<b>Database:</b>	Landmark	<b>Local Co-ordinate Reference:</b>	Well Staley 10-7
<b>Company:</b>	Bayswater Exploration & Production, LLC	<b>TVD Reference:</b>	WELL @ 4836.0ft (Original Well Elev)
<b>Project:</b>	SEC.7-T6N-R67W	<b>MD Reference:</b>	WELL @ 4836.0ft (Original Well Elev)
<b>Site:</b>	Staley 10-7 Pad Sec.7-T6N-R67W	<b>North Reference:</b>	True
<b>Well:</b>	Staley 10-7	<b>Survey Calculation Method:</b>	Minimum Curvature
<b>Wellbore:</b>	Wellbore #1		
<b>Design:</b>	Plan #1 (5-16-13)		

Planned Survey									
Measured Depth (ft)	Inclination (°)	Azimuth (°)	Vertical Depth (ft)	+N/-S (ft)	+E/-W (ft)	Vertical Section (ft)	Dogleg Rate (°/100ft)	Build Rate (°/100ft)	Turn Rate (°/100ft)
2,040.0	12.53	123.67	2,020.4	-111.6	167.6	201.4	0.00	0.00	0.00
2,080.0	12.53	123.67	2,059.4	-116.5	174.8	210.0	0.00	0.00	0.00
2,120.0	12.53	123.67	2,098.5	-121.3	182.0	218.7	0.00	0.00	0.00
2,160.0	12.53	123.67	2,137.5	-126.1	189.2	227.4	0.00	0.00	0.00
2,200.0	12.53	123.67	2,176.6	-130.9	196.5	236.1	0.00	0.00	0.00
2,205.5	12.53	123.67	2,182.0	-131.6	197.5	237.3	0.00	0.00	0.00
<b>Richards</b>									
2,240.0	12.53	123.67	2,215.6	-135.7	203.7	244.8	0.00	0.00	0.00
2,280.0	12.53	123.67	2,254.7	-140.5	210.9	253.4	0.00	0.00	0.00
2,320.0	12.53	123.67	2,293.7	-145.3	218.1	262.1	0.00	0.00	0.00
2,360.0	12.53	123.67	2,332.8	-150.2	225.4	270.8	0.00	0.00	0.00
2,400.0	12.53	123.67	2,371.8	-155.0	232.6	279.5	0.00	0.00	0.00
2,440.0	12.53	123.67	2,410.9	-159.8	239.8	288.2	0.00	0.00	0.00
2,480.0	12.53	123.67	2,449.9	-164.6	247.0	296.8	0.00	0.00	0.00
2,520.0	12.53	123.67	2,489.0	-169.4	254.3	305.5	0.00	0.00	0.00
2,560.0	12.53	123.67	2,528.0	-174.2	261.5	314.2	0.00	0.00	0.00
2,600.0	12.53	123.67	2,567.1	-179.0	268.7	322.9	0.00	0.00	0.00
2,640.0	12.53	123.67	2,606.1	-183.8	275.9	331.6	0.00	0.00	0.00
2,680.0	12.53	123.67	2,645.1	-188.7	283.2	340.2	0.00	0.00	0.00
2,720.0	12.53	123.67	2,684.2	-193.5	290.4	348.9	0.00	0.00	0.00
2,760.0	12.53	123.67	2,723.2	-198.3	297.6	357.6	0.00	0.00	0.00
2,800.0	12.53	123.67	2,762.3	-203.1	304.8	366.3	0.00	0.00	0.00
2,840.0	12.53	123.67	2,801.3	-207.9	312.1	375.0	0.00	0.00	0.00
2,880.0	12.53	123.67	2,840.4	-212.7	319.3	383.7	0.00	0.00	0.00
2,920.0	12.53	123.67	2,879.4	-217.5	326.5	392.3	0.00	0.00	0.00
2,960.0	12.53	123.67	2,918.5	-222.3	333.7	401.0	0.00	0.00	0.00
3,000.0	12.53	123.67	2,957.5	-227.2	340.9	409.7	0.00	0.00	0.00
3,040.0	12.53	123.67	2,996.6	-232.0	348.2	418.4	0.00	0.00	0.00
3,080.0	12.53	123.67	3,035.6	-236.8	355.4	427.1	0.00	0.00	0.00
3,120.0	12.53	123.67	3,074.7	-241.6	362.6	435.7	0.00	0.00	0.00
3,160.0	12.53	123.67	3,113.7	-246.4	369.8	444.4	0.00	0.00	0.00
3,200.0	12.53	123.67	3,152.8	-251.2	377.1	453.1	0.00	0.00	0.00
3,240.0	12.53	123.67	3,191.8	-256.0	384.3	461.8	0.00	0.00	0.00
3,280.0	12.53	123.67	3,230.8	-260.8	391.5	470.5	0.00	0.00	0.00
3,320.0	12.53	123.67	3,269.9	-265.7	398.7	479.1	0.00	0.00	0.00
3,337.5	12.53	123.67	3,287.0	-267.8	401.9	482.9	0.00	0.00	0.00
<b>Parkman</b>									
3,360.0	12.53	123.67	3,308.9	-270.5	406.0	487.8	0.00	0.00	0.00
3,400.0	12.53	123.67	3,348.0	-275.3	413.2	496.5	0.00	0.00	0.00
3,440.0	12.53	123.67	3,387.0	-280.1	420.4	505.2	0.00	0.00	0.00
3,480.0	12.53	123.67	3,426.1	-284.9	427.6	513.9	0.00	0.00	0.00
3,520.0	12.53	123.67	3,465.1	-289.7	434.9	522.5	0.00	0.00	0.00
3,560.0	12.53	123.67	3,504.2	-294.5	442.1	531.2	0.00	0.00	0.00
3,600.0	12.53	123.67	3,543.2	-299.4	449.3	539.9	0.00	0.00	0.00
3,640.0	12.53	123.67	3,582.3	-304.2	456.5	548.6	0.00	0.00	0.00
3,680.0	12.53	123.67	3,621.3	-309.0	463.8	557.3	0.00	0.00	0.00
3,720.0	12.53	123.67	3,660.4	-313.8	471.0	565.9	0.00	0.00	0.00
3,760.0	12.53	123.67	3,699.4	-318.6	478.2	574.6	0.00	0.00	0.00
3,800.0	12.53	123.67	3,738.5	-323.4	485.4	583.3	0.00	0.00	0.00
3,840.0	12.53	123.67	3,777.5	-328.2	492.6	592.0	0.00	0.00	0.00
3,880.0	12.53	123.67	3,816.6	-333.0	499.9	600.7	0.00	0.00	0.00
3,920.0	12.53	123.67	3,855.6	-337.9	507.1	609.3	0.00	0.00	0.00
3,960.0	12.53	123.67	3,894.6	-342.7	514.3	618.0	0.00	0.00	0.00
4,000.0	12.53	123.67	3,933.7	-347.5	521.5	626.7	0.00	0.00	0.00

<b>Database:</b>	Landmark	<b>Local Co-ordinate Reference:</b>	Well Staley 10-7
<b>Company:</b>	Bayswater Exploration & Production, LLC	<b>TVD Reference:</b>	WELL @ 4836.0ft (Original Well Elev)
<b>Project:</b>	SEC.7-T6N-R67W	<b>MD Reference:</b>	WELL @ 4836.0ft (Original Well Elev)
<b>Site:</b>	Staley 10-7 Pad Sec.7-T6N-R67W	<b>North Reference:</b>	True
<b>Well:</b>	Staley 10-7	<b>Survey Calculation Method:</b>	Minimum Curvature
<b>Wellbore:</b>	Wellbore #1		
<b>Design:</b>	Plan #1 (5-16-13)		

Planned Survey									
Measured Depth (ft)	Inclination (°)	Azimuth (°)	Vertical Depth (ft)	+N/-S (ft)	+E/-W (ft)	Vertical Section (ft)	Dogleg Rate (°/100ft)	Build Rate (°/100ft)	Turn Rate (°/100ft)
4,040.0	12.53	123.67	3,972.7	-352.3	528.8	635.4	0.00	0.00	0.00
4,080.0	12.53	123.67	4,011.8	-357.1	536.0	644.1	0.00	0.00	0.00
4,120.0	12.53	123.67	4,050.8	-361.9	543.2	652.7	0.00	0.00	0.00
4,160.0	12.53	123.67	4,089.9	-366.7	550.4	661.4	0.00	0.00	0.00
4,200.0	12.53	123.67	4,128.9	-371.5	557.7	670.1	0.00	0.00	0.00
4,240.0	12.53	123.67	4,168.0	-376.4	564.9	678.8	0.00	0.00	0.00
4,280.0	12.53	123.67	4,207.0	-381.2	572.1	687.5	0.00	0.00	0.00
4,320.0	12.53	123.67	4,246.1	-386.0	579.3	696.1	0.00	0.00	0.00
4,360.0	12.53	123.67	4,285.1	-390.8	586.6	704.8	0.00	0.00	0.00
4,400.0	12.53	123.67	4,324.2	-395.6	593.8	713.5	0.00	0.00	0.00
4,440.0	12.53	123.67	4,363.2	-400.4	601.0	722.2	0.00	0.00	0.00
4,464.4	12.53	123.67	4,387.0	-403.4	605.4	727.5	0.00	0.00	0.00
<b>Sussex</b>									
4,480.0	12.53	123.67	4,402.3	-405.2	608.2	730.9	0.00	0.00	0.00
4,520.0	12.53	123.67	4,441.3	-410.0	615.5	739.5	0.00	0.00	0.00
4,560.0	12.53	123.67	4,480.3	-414.9	622.7	748.2	0.00	0.00	0.00
4,600.0	12.53	123.67	4,519.4	-419.7	629.9	756.9	0.00	0.00	0.00
4,640.0	12.53	123.67	4,558.4	-424.5	637.1	765.6	0.00	0.00	0.00
4,680.0	12.53	123.67	4,597.5	-429.3	644.3	774.3	0.00	0.00	0.00
4,720.0	12.53	123.67	4,636.5	-434.1	651.6	782.9	0.00	0.00	0.00
4,760.0	12.53	123.67	4,675.6	-438.9	658.8	791.6	0.00	0.00	0.00
4,800.0	12.53	123.67	4,714.6	-443.7	666.0	800.3	0.00	0.00	0.00
4,840.0	12.53	123.67	4,753.7	-448.6	673.2	809.0	0.00	0.00	0.00
4,880.0	12.53	123.67	4,792.7	-453.4	680.5	817.7	0.00	0.00	0.00
4,920.0	12.53	123.67	4,831.8	-458.2	687.7	826.3	0.00	0.00	0.00
4,960.0	12.53	123.67	4,870.8	-463.0	694.9	835.0	0.00	0.00	0.00
4,971.5	12.53	123.67	4,882.0	-464.4	697.0	837.5	0.00	0.00	0.00
<b>Shannon</b>									
5,000.0	12.53	123.67	4,909.9	-467.8	702.1	843.7	0.00	0.00	0.00
5,040.0	12.53	123.67	4,948.9	-472.6	709.4	852.4	0.00	0.00	0.00
5,080.0	12.53	123.67	4,988.0	-477.4	716.6	861.1	0.00	0.00	0.00
5,120.0	12.53	123.67	5,027.0	-482.2	723.8	869.7	0.00	0.00	0.00
5,160.0	12.53	123.67	5,066.0	-487.1	731.0	878.4	0.00	0.00	0.00
5,172.6	12.53	123.67	5,078.3	-488.6	733.3	881.2	0.00	0.00	0.00
5,200.0	11.98	123.67	5,105.1	-491.8	738.2	887.0	2.00	-2.00	0.00
5,240.0	11.18	123.67	5,144.3	-496.3	744.8	895.0	2.00	-2.00	0.00
5,280.0	10.38	123.67	5,183.6	-500.4	751.1	902.5	2.00	-2.00	0.00
5,320.0	9.58	123.67	5,223.0	-504.2	756.8	909.4	2.00	-2.00	0.00
5,360.0	8.78	123.67	5,262.5	-507.8	762.1	915.8	2.00	-2.00	0.00
5,400.0	7.98	123.67	5,302.1	-511.0	767.0	921.6	2.00	-2.00	0.00
5,440.0	7.18	123.67	5,341.7	-513.9	771.4	926.9	2.00	-2.00	0.00
5,480.0	6.38	123.67	5,381.4	-516.6	775.3	931.7	2.00	-2.00	0.00
5,520.0	5.58	123.67	5,421.2	-518.9	778.8	935.8	2.00	-2.00	0.00
5,560.0	4.78	123.67	5,461.0	-520.9	781.8	939.4	2.00	-2.00	0.00
5,600.0	3.98	123.67	5,500.9	-522.6	784.4	942.5	2.00	-2.00	0.00
5,640.0	3.18	123.67	5,540.8	-524.0	786.4	945.0	2.00	-2.00	0.00
5,680.0	2.38	123.67	5,580.8	-525.0	788.1	946.9	2.00	-2.00	0.00
5,720.0	1.58	123.67	5,620.8	-525.8	789.2	948.3	2.00	-2.00	0.00
5,760.0	0.78	123.67	5,660.8	-526.3	789.9	949.2	2.00	-2.00	0.00
5,799.2	0.00	0.00	5,700.0	-526.4	790.1	949.4	2.00	-2.00	-315.21
<b>TARGET BHL 1982°FSL, 1856°FEL</b>									
5,800.0	0.00	0.00	5,700.8	-526.4	790.1	949.4	0.00	0.00	0.00
5,840.0	0.00	0.00	5,740.8	-526.4	790.1	949.4	0.00	0.00	0.00

<b>Database:</b>	Landmark	<b>Local Co-ordinate Reference:</b>	Well Staley 10-7
<b>Company:</b>	Bayswater Exploration & Production, LLC	<b>TVD Reference:</b>	WELL @ 4836.0ft (Original Well Elev)
<b>Project:</b>	SEC.7-T6N-R67W	<b>MD Reference:</b>	WELL @ 4836.0ft (Original Well Elev)
<b>Site:</b>	Staley 10-7 Pad Sec.7-T6N-R67W	<b>North Reference:</b>	True
<b>Well:</b>	Staley 10-7	<b>Survey Calculation Method:</b>	Minimum Curvature
<b>Wellbore:</b>	Wellbore #1		
<b>Design:</b>	Plan #1 (5-16-13)		

Planned Survey									
Measured Depth (ft)	Inclination (°)	Azimuth (°)	Vertical Depth (ft)	+N/-S (ft)	+E/-W (ft)	Vertical Section (ft)	Dogleg Rate (°/100ft)	Build Rate (°/100ft)	Turn Rate (°/100ft)
5,880.0	0.00	0.00	5,780.8	-526.4	790.1	949.4	0.00	0.00	0.00
5,920.0	0.00	0.00	5,820.8	-526.4	790.1	949.4	0.00	0.00	0.00
5,960.0	0.00	0.00	5,860.8	-526.4	790.1	949.4	0.00	0.00	0.00
6,000.0	0.00	0.00	5,900.8	-526.4	790.1	949.4	0.00	0.00	0.00
6,040.0	0.00	0.00	5,940.8	-526.4	790.1	949.4	0.00	0.00	0.00
6,080.0	0.00	0.00	5,980.8	-526.4	790.1	949.4	0.00	0.00	0.00
6,120.0	0.00	0.00	6,020.8	-526.4	790.1	949.4	0.00	0.00	0.00
6,160.0	0.00	0.00	6,060.8	-526.4	790.1	949.4	0.00	0.00	0.00
6,200.0	0.00	0.00	6,100.8	-526.4	790.1	949.4	0.00	0.00	0.00
6,240.0	0.00	0.00	6,140.8	-526.4	790.1	949.4	0.00	0.00	0.00
6,280.0	0.00	0.00	6,180.8	-526.4	790.1	949.4	0.00	0.00	0.00
6,320.0	0.00	0.00	6,220.8	-526.4	790.1	949.4	0.00	0.00	0.00
6,360.0	0.00	0.00	6,260.8	-526.4	790.1	949.4	0.00	0.00	0.00
6,400.0	0.00	0.00	6,300.8	-526.4	790.1	949.4	0.00	0.00	0.00
6,440.0	0.00	0.00	6,340.8	-526.4	790.1	949.4	0.00	0.00	0.00
6,480.0	0.00	0.00	6,380.8	-526.4	790.1	949.4	0.00	0.00	0.00
6,520.0	0.00	0.00	6,420.8	-526.4	790.1	949.4	0.00	0.00	0.00
6,560.0	0.00	0.00	6,460.8	-526.4	790.1	949.4	0.00	0.00	0.00
6,600.0	0.00	0.00	6,500.8	-526.4	790.1	949.4	0.00	0.00	0.00
6,640.0	0.00	0.00	6,540.8	-526.4	790.1	949.4	0.00	0.00	0.00
6,680.0	0.00	0.00	6,580.8	-526.4	790.1	949.4	0.00	0.00	0.00
6,720.0	0.00	0.00	6,620.8	-526.4	790.1	949.4	0.00	0.00	0.00
6,760.0	0.00	0.00	6,660.8	-526.4	790.1	949.4	0.00	0.00	0.00
6,784.2	0.00	0.00	6,685.0	-526.4	790.1	949.4	0.00	0.00	0.00
<b>Niobrara - LEGAL BOX 400 X 400 1983'FSL, 1852'FEL - TARGET CIRCLE 1982'FSL, 1856'FEL</b>									
6,800.0	0.00	0.00	6,700.8	-526.4	790.1	949.4	0.00	0.00	0.00
6,840.0	0.00	0.00	6,740.8	-526.4	790.1	949.4	0.00	0.00	0.00
6,880.0	0.00	0.00	6,780.8	-526.4	790.1	949.4	0.00	0.00	0.00
6,920.0	0.00	0.00	6,820.8	-526.4	790.1	949.4	0.00	0.00	0.00
6,960.0	0.00	0.00	6,860.8	-526.4	790.1	949.4	0.00	0.00	0.00
7,000.0	0.00	0.00	6,900.8	-526.4	790.1	949.4	0.00	0.00	0.00
7,040.0	0.00	0.00	6,940.8	-526.4	790.1	949.4	0.00	0.00	0.00
7,066.2	0.00	0.00	6,967.0	-526.4	790.1	949.4	0.00	0.00	0.00
<b>Fort Hays</b>									
7,080.0	0.00	0.00	6,980.8	-526.4	790.1	949.4	0.00	0.00	0.00
7,100.2	0.00	0.00	7,001.0	-526.4	790.1	949.4	0.00	0.00	0.00
<b>Codell</b>									
7,120.0	0.00	0.00	7,020.8	-526.4	790.1	949.4	0.00	0.00	0.00
7,148.2	0.00	0.00	7,049.0	-526.4	790.1	949.4	0.00	0.00	0.00
<b>Greenhorn</b>									
7,160.0	0.00	0.00	7,060.8	-526.4	790.1	949.4	0.00	0.00	0.00
7,200.0	0.00	0.00	7,100.8	-526.4	790.1	949.4	0.00	0.00	0.00
7,232.2	0.00	0.00	7,133.0	-526.4	790.1	949.4	0.00	0.00	0.00
<b>Graneros</b>									
7,240.0	0.00	0.00	7,140.8	-526.4	790.1	949.4	0.00	0.00	0.00
7,249.2	0.00	0.00	7,150.0	-526.4	790.1	949.4	0.00	0.00	0.00

<b>Database:</b>	Landmark	<b>Local Co-ordinate Reference:</b>	Well Staley 10-7
<b>Company:</b>	Bayswater Exploration & Production, LLC	<b>TVD Reference:</b>	WELL @ 4836.0ft (Original Well Elev)
<b>Project:</b>	SEC.7-T6N-R67W	<b>MD Reference:</b>	WELL @ 4836.0ft (Original Well Elev)
<b>Site:</b>	Staley 10-7 Pad Sec.7-T6N-R67W	<b>North Reference:</b>	True
<b>Well:</b>	Staley 10-7	<b>Survey Calculation Method:</b>	Minimum Curvature
<b>Wellbore:</b>	Wellbore #1		
<b>Design:</b>	Plan #1 (5-16-13)		

Targets									
Target Name	Dip Angle (°)	Dip Dir. (°)	TVD (ft)	+N/-S (ft)	+E/-W (ft)	Northing (ft)	Easting (ft)	Latitude	Longitude
TARGET BHL 1982'F: - hit/miss target - Shape	0.00	0.00	5,700.0	-526.4	790.1	1,425,241.03	3,157,620.41	40.499305	-104.933225
LEGAL BOX 400 X 400 - plan hits target center - Point	0.00	0.00	6,685.0	-525.4	794.1	1,425,242.08	3,157,624.38	40.499308	-104.933211
TARGET CIRCLE 1982'F: - plan misses target center by 4.1ft at 6784.2ft MD (6685.0 TVD, -526.4 N, 790.1 E) - Rectangle (sides W400.0 H400.0 D465.0)	0.00	0.00	6,685.0	-526.4	790.1	1,425,241.03	3,157,620.41	40.499305	-104.933225
TARGET CIRCLE 1982'F: - plan hits target center - Circle (radius 100.0)	0.00	0.00	6,685.0	-526.4	790.1	1,425,241.03	3,157,620.41	40.499305	-104.933225

Casing Points				
Measured Depth (ft)	Vertical Depth (ft)	Name	Casing Diameter (")	Hole Diameter (")
625.0	625.0	8 5/8"	8-5/8	12-1/4

Formations						
Measured Depth (ft)	Vertical Depth (ft)	Name	Lithology	Dip (°)	Dip Direction (°)	
2,205.5	2,182.0	Richards				
3,337.5	3,287.0	Parkman				
4,464.4	4,387.0	Sussex				
4,971.5	4,882.0	Shannon				
6,784.2	6,685.0	Niobrara				
7,066.2	6,967.0	Fort Hays				
7,100.2	7,001.0	Codell				
7,148.2	7,049.0	Greenhorn				
7,232.2	7,133.0	Graneros				





**Directional**

## **Bayswater Exploration & Production, LLC**

**SEC.7-T6N-R67W**

**Staley 10-7 Pad Sec.7-T6N-R67W**

**Staley 10-7**

**Wellbore #1**

**Plan #1 (5-16-13)**

## **Anticollision Report**

**17 May, 2013**



**Directional**

<b>Company:</b>	Bayswater Exploration & Production, LLC	<b>Local Co-ordinate Reference:</b>	Well Staley 10-7
<b>Project:</b>	SEC.7-T6N-R67W	<b>TVD Reference:</b>	WELL @ 4836.0ft (Original Well Elev)
<b>Reference Site:</b>	Staley 10-7 Pad Sec.7-T6N-R67W	<b>MD Reference:</b>	WELL @ 4836.0ft (Original Well Elev)
<b>Site Error:</b>	0.0ft	<b>North Reference:</b>	True
<b>Reference Well:</b>	Staley 10-7	<b>Survey Calculation Method:</b>	Minimum Curvature
<b>Well Error:</b>	0.0ft	<b>Output errors are at</b>	2.00 sigma
<b>Reference Wellbore</b>	Wellbore #1	<b>Database:</b>	Landmark
<b>Reference Design:</b>	Plan #1 (5-16-13)	<b>Offset TVD Reference:</b>	Offset Datum

<b>Reference</b>	Plan #1 (5-16-13)		
<b>Filter type:</b>	NO GLOBAL FILTER: Using user defined selection & filtering criteria		
<b>Interpolation Method:</b>	Stations	<b>Error Model:</b>	ISCWSA
<b>Depth Range:</b>	Unlimited	<b>Scan Method:</b>	Closest Approach 3D
<b>Results Limited by:</b>	Maximum center-center distance of 10,000.0ft	<b>Error Surface:</b>	Elliptical Conic
<b>Warning Levels Evaluated at:</b>	2.00 Sigma		

<b>Survey Tool Program</b>	<b>Date</b> 5/17/2013			
<b>From (ft)</b>	<b>To (ft)</b>	<b>Survey (Wellbore)</b>	<b>Tool Name</b>	<b>Description</b>
0.0	7,249.2	Plan #1 (5-16-13) (Wellbore #1)	MWD	MWD - Standard

<b>Summary</b>						
<b>Site Name</b>	<b>Reference Measured Depth (ft)</b>	<b>Offset Measured Depth (ft)</b>	<b>Distance Between Centres (ft)</b>	<b>Distance Between Ellipses (ft)</b>	<b>Separation Factor</b>	<b>Warning</b>
<b>Offset Well - Wellbore - Design</b>						
Staley 10-7 Pad Sec.7-T6N-R67W						
Staley 25-7 (Vert) - Wellbore #1 - Plan #1 (5-17-13)	800.0	800.0	15.3	11.9	4.540	CC, ES
Staley 25-7 (Vert) - Wellbore #1 - Plan #1 (5-17-13)	900.0	900.0	16.3	12.5	4.299	SF

Offset Design      Staley 10-7 Pad Sec.7-T6N-R67W - Staley 25-7 (Vert) - Wellbore #1 - Plan #1 (5-17-13)													Offset Site Error:	0.0 ft
Survey Program: 0-MWD													Offset Well Error:	0.0 ft
Reference		Offset		Semi Major Axis			Distance							Warning
Measured Depth (ft)	Vertical Depth (ft)	Measured Depth (ft)	Vertical Depth (ft)	Reference (ft)	Offset (ft)	Highside Toolface (°)	Offset Wellbore Centre +N/-S (ft)	+E/-W (ft)	Between Centres (ft)	Between Ellipses (ft)	Minimum Separation (ft)	Separation Factor		
0.0	0.0	0.0	0.0	0.0	0.0	0.00	15.3	0.0	15.3	15.3	0.00	N/A		
100.0	100.0	100.0	100.0	0.1	0.1	0.00	15.3	0.0	15.3	15.1	0.22	68.095		
200.0	200.0	200.0	200.0	0.3	0.3	0.00	15.3	0.0	15.3	14.6	0.67	22.698		
300.0	300.0	300.0	300.0	0.6	0.6	0.00	15.3	0.0	15.3	14.2	1.12	13.619		
400.0	400.0	400.0	400.0	0.8	0.8	0.00	15.3	0.0	15.3	13.7	1.57	9.728		
500.0	500.0	500.0	500.0	1.0	1.0	0.00	15.3	0.0	15.3	13.3	2.02	7.566		
600.0	600.0	600.0	600.0	1.2	1.2	0.00	15.3	0.0	15.3	12.8	2.47	6.190		
700.0	700.0	700.0	700.0	1.5	1.5	0.00	15.3	0.0	15.3	12.4	2.92	5.238		
800.0	800.0	800.0	800.0	1.7	1.7	0.00	15.3	0.0	15.3	11.9	3.37	4.540	CC, ES	
900.0	900.0	900.0	900.0	1.9	1.9	-128.76	15.3	0.0	16.3	12.5	3.80	4.299	SF	
1,000.0	999.8	999.8	999.8	2.1	2.1	-140.46	15.3	0.0	20.0	15.8	4.21	4.753		
1,100.0	1,099.5	1,099.5	1,099.5	2.3	2.4	-152.09	15.3	0.0	27.3	22.7	4.63	5.898		
1,200.0	1,198.7	1,198.7	1,198.7	2.5	2.6	-160.52	15.3	0.0	38.5	33.5	5.05	7.628		
1,300.0	1,297.5	1,297.5	1,297.5	2.8	2.8	-166.03	15.3	0.0	53.5	48.1	5.47	9.793		
1,400.0	1,395.6	1,395.6	1,395.6	3.1	3.0	-169.62	15.3	0.0	72.2	66.3	5.88	12.275		
1,426.7	1,421.7	1,421.7	1,421.7	3.2	3.1	-170.35	15.3	0.0	77.8	71.8	5.99	12.980		
1,500.0	1,493.3	1,493.3	1,493.3	3.5	3.2	-171.99	15.3	0.0	93.5	87.2	6.32	14.806		
1,600.0	1,590.9	1,590.9	1,590.9	3.9	3.5	-173.49	15.3	0.0	115.1	108.3	6.77	17.010		
1,700.0	1,688.5	1,688.5	1,688.5	4.3	3.7	-174.52	15.3	0.0	136.7	129.4	7.22	18.934		
1,800.0	1,786.1	1,786.1	1,786.1	4.7	3.9	-175.27	15.3	0.0	158.3	150.6	7.68	20.622		
1,900.0	1,883.7	1,883.7	1,883.7	5.2	4.1	-175.84	15.3	0.0	179.9	171.8	8.14	22.113		
2,000.0	1,981.4	1,981.4	1,981.4	5.6	4.3	-176.29	15.3	0.0	201.6	193.0	8.60	23.437		
2,100.0	2,079.0	2,079.0	2,079.0	6.1	4.6	-176.65	15.3	0.0	223.2	214.2	9.07	24.618		
2,200.0	2,176.6	2,176.6	2,176.6	6.5	4.8	-176.95	15.3	0.0	244.9	235.4	9.54	25.679		
2,300.0	2,274.2	2,274.2	2,274.2	7.0	5.0	-177.19	15.3	0.0	266.6	256.6	10.01	26.636		

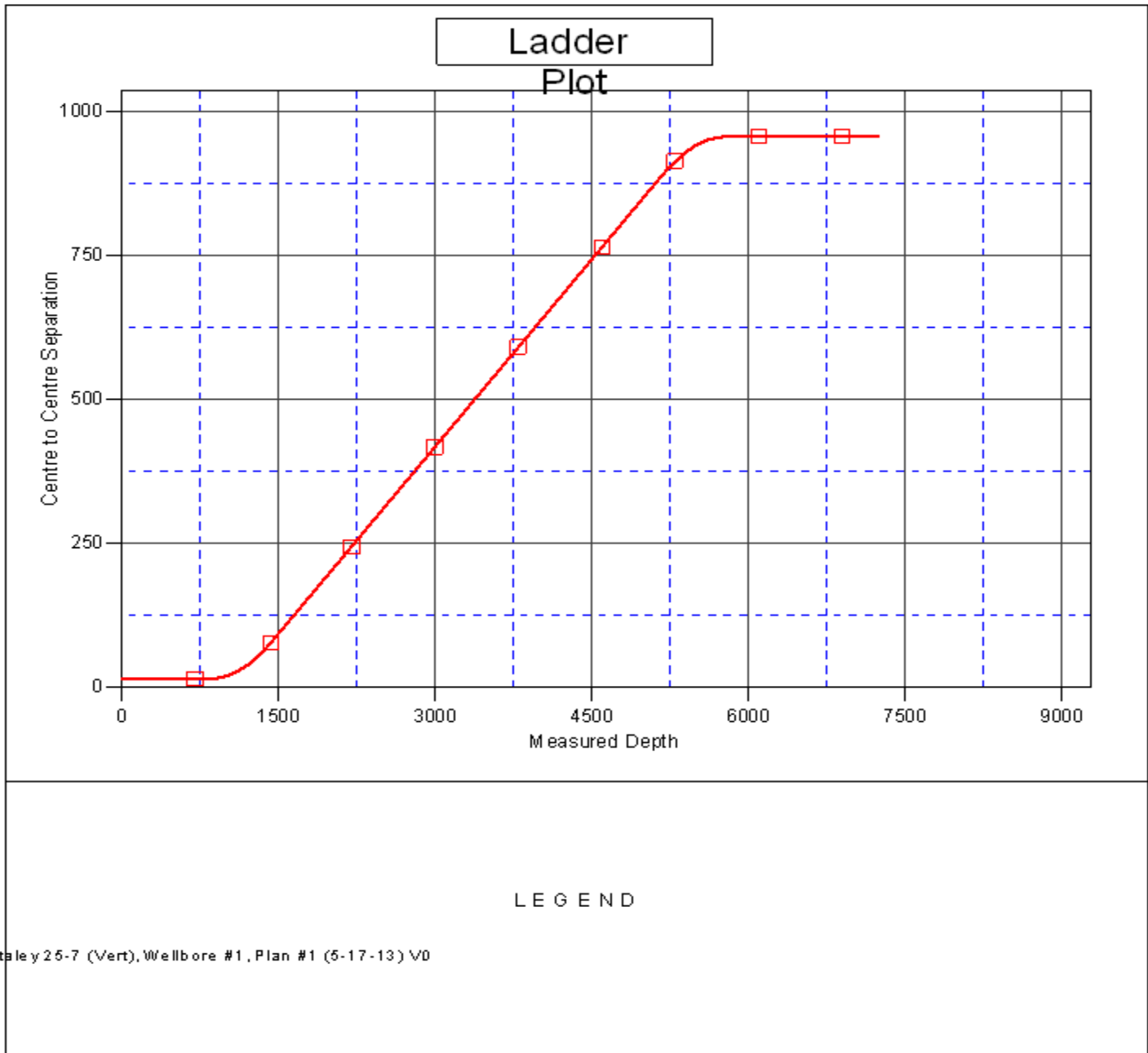
CC - Min centre to center distance or convergent point, SF - min separation factor, ES - min ellipse separation

<b>Company:</b>	Bayswater Exploration & Production, LLC	<b>Local Co-ordinate Reference:</b>	Well Staley 10-7
<b>Project:</b>	SEC.7-T6N-R67W	<b>TVD Reference:</b>	WELL @ 4836.0ft (Original Well Elev)
<b>Reference Site:</b>	Staley 10-7 Pad Sec.7-T6N-R67W	<b>MD Reference:</b>	WELL @ 4836.0ft (Original Well Elev)
<b>Site Error:</b>	0.0ft	<b>North Reference:</b>	True
<b>Reference Well:</b>	Staley 10-7	<b>Survey Calculation Method:</b>	Minimum Curvature
<b>Well Error:</b>	0.0ft	<b>Output errors are at</b>	2.00 sigma
<b>Reference Wellbore</b>	Wellbore #1	<b>Database:</b>	Landmark
<b>Reference Design:</b>	Plan #1 (5-16-13)	<b>Offset TVD Reference:</b>	Offset Datum

Offset Design													Offset Site Error:	0.0 ft
Survey Program: 0-MWD													Offset Well Error:	0.0 ft
Reference		Offset		Semi Major Axis			Distance							Warning
Measured Depth (ft)	Vertical Depth (ft)	Measured Depth (ft)	Vertical Depth (ft)	Reference (ft)	Offset (ft)	Highside Toolface (°)	Offset Wellbore Centre +N/-S (ft)	+E/-W (ft)	Between Centres (ft)	Between Ellipses (ft)	Minimum Separation (ft)	Separation Factor		
2,400.0	2,371.8	2,371.8	2,371.8	7.5	5.2	-177.41	15.3	0.0	288.3	277.8	10.48	27.503		
2,500.0	2,469.4	2,469.4	2,469.4	7.9	5.4	-177.59	15.3	0.0	309.9	299.0	10.95	28.292		
2,600.0	2,567.1	2,567.1	2,567.1	8.4	5.7	-177.75	15.3	0.0	331.6	320.2	11.43	29.013		
2,700.0	2,664.7	2,664.7	2,664.7	8.9	5.9	-177.88	15.3	0.0	353.3	341.4	11.91	29.673		
2,800.0	2,762.3	2,762.3	2,762.3	9.3	6.1	-178.01	15.3	0.0	375.0	362.6	12.38	30.281		
2,900.0	2,859.9	2,859.9	2,859.9	9.8	6.3	-178.12	15.3	0.0	396.7	383.8	12.86	30.841		
3,000.0	2,957.5	2,957.5	2,957.5	10.3	6.5	-178.21	15.3	0.0	418.4	405.0	13.34	31.360		
3,100.0	3,055.1	3,055.1	3,055.1	10.7	6.8	-178.30	15.3	0.0	440.1	426.2	13.82	31.841		
3,200.0	3,152.8	3,152.8	3,152.8	11.2	7.0	-178.38	15.3	0.0	461.8	447.5	14.30	32.289		
3,300.0	3,250.4	3,250.4	3,250.4	11.7	7.2	-178.45	15.3	0.0	483.4	468.7	14.78	32.706		
3,400.0	3,348.0	3,348.0	3,348.0	12.2	7.4	-178.52	15.3	0.0	505.1	489.9	15.26	33.096		
3,500.0	3,445.6	3,445.6	3,445.6	12.6	7.6	-178.58	15.3	0.0	526.8	511.1	15.74	33.461		
3,600.0	3,543.2	3,543.2	3,543.2	13.1	7.9	-178.64	15.3	0.0	548.5	532.3	16.23	33.804		
3,700.0	3,640.8	3,640.8	3,640.8	13.6	8.1	-178.69	15.3	0.0	570.2	553.5	16.71	34.126		
3,800.0	3,738.5	3,738.5	3,738.5	14.1	8.3	-178.74	15.3	0.0	591.9	574.7	17.19	34.430		
3,900.0	3,836.1	3,836.1	3,836.1	14.6	8.5	-178.78	15.3	0.0	613.6	595.9	17.68	34.716		
4,000.0	3,933.7	3,933.7	3,933.7	15.0	8.7	-178.82	15.3	0.0	635.3	617.2	18.16	34.986		
4,100.0	4,031.3	4,031.3	4,031.3	15.5	8.9	-178.86	15.3	0.0	657.0	638.4	18.64	35.242		
4,200.0	4,128.9	4,128.9	4,128.9	16.0	9.2	-178.90	15.3	0.0	678.7	659.6	19.13	35.485		
4,300.0	4,226.5	4,226.5	4,226.5	16.5	9.4	-178.93	15.3	0.0	700.4	680.8	19.61	35.715		
4,400.0	4,324.2	4,324.2	4,324.2	16.9	9.6	-178.96	15.3	0.0	722.1	702.0	20.10	35.933		
4,500.0	4,421.8	4,421.8	4,421.8	17.4	9.8	-178.99	15.3	0.0	743.8	723.2	20.58	36.141		
4,600.0	4,519.4	4,519.4	4,519.4	17.9	10.0	-179.02	15.3	0.0	765.5	744.4	21.07	36.339		
4,700.0	4,617.0	4,617.0	4,617.0	18.4	10.3	-179.05	15.3	0.0	787.2	765.6	21.55	36.528		
4,800.0	4,714.6	4,714.6	4,714.6	18.9	10.5	-179.08	15.3	0.0	808.9	786.9	22.04	36.708		
4,900.0	4,812.2	4,812.2	4,812.2	19.3	10.7	-179.10	15.3	0.0	830.6	808.1	22.52	36.880		
5,000.0	4,909.9	4,909.9	4,909.9	19.8	10.9	-179.12	15.3	0.0	852.3	829.3	23.01	37.044		
5,100.0	5,007.5	5,007.5	5,007.5	20.3	11.1	-179.14	15.3	0.0	874.0	850.5	23.49	37.201		
5,172.6	5,078.3	5,078.3	5,078.3	20.7	11.3	-179.16	15.3	0.0	889.7	865.9	23.85	37.312		
5,200.0	5,105.1	5,105.1	5,105.1	20.8	11.4	-179.17	15.3	0.0	895.6	871.6	24.00	37.321		
5,300.0	5,203.3	5,203.3	5,203.3	21.1	11.6	-179.19	15.3	0.0	914.6	890.1	24.50	37.328		
5,400.0	5,302.1	5,302.1	5,302.1	21.4	11.8	-179.21	15.3	0.0	930.2	905.2	24.98	37.245		
5,500.0	5,401.3	5,401.3	5,401.3	21.6	12.0	-179.22	15.3	0.0	942.4	917.0	25.42	37.079		
5,600.0	5,500.9	5,500.9	5,500.9	21.8	12.3	-179.23	15.3	0.0	951.1	925.2	25.82	36.836		
5,700.0	5,600.8	5,600.8	5,600.8	22.0	12.5	-179.24	15.3	0.0	956.3	930.1	26.19	36.518		
5,799.2	5,700.0	5,700.0	5,700.0	22.1	12.7	-55.56	15.3	0.0	958.0	931.5	26.52	36.117		
5,900.0	5,800.8	5,800.8	5,800.8	22.2	12.9	-55.56	15.3	0.0	958.0	931.1	26.93	35.574		
6,000.0	5,900.8	5,900.8	5,900.8	22.3	13.2	-55.56	15.3	0.0	958.0	930.7	27.33	35.058		
6,100.0	6,000.8	6,000.8	6,000.8	22.4	13.4	-55.56	15.3	0.0	958.0	930.3	27.72	34.554		
6,200.0	6,100.8	6,100.8	6,100.8	22.6	13.6	-55.56	15.3	0.0	958.0	929.9	28.12	34.063		
6,300.0	6,200.8	6,200.8	6,200.8	22.7	13.8	-55.56	15.3	0.0	958.0	929.5	28.53	33.584		
6,400.0	6,300.8	6,300.8	6,300.8	22.8	14.0	-55.56	15.3	0.0	958.0	929.1	28.93	33.117		
6,500.0	6,400.8	6,400.8	6,400.8	22.9	14.3	-55.56	15.3	0.0	958.0	928.7	29.33	32.661		
6,600.0	6,500.8	6,500.8	6,500.8	23.0	14.5	-55.56	15.3	0.0	958.0	928.3	29.74	32.217		
6,700.0	6,600.8	6,600.8	6,600.8	23.2	14.7	-55.56	15.3	0.0	958.0	927.9	30.14	31.783		
6,800.0	6,700.8	6,700.8	6,700.8	23.3	14.9	-55.56	15.3	0.0	958.0	927.4	30.55	31.359		
6,900.0	6,800.8	6,800.8	6,800.8	23.4	15.2	-55.56	15.3	0.0	958.0	927.0	30.96	30.946		
7,000.0	6,900.8	6,900.8	6,900.8	23.5	15.4	-55.56	15.3	0.0	958.0	926.6	31.37	30.542		
7,100.0	7,000.8	7,000.8	7,000.8	23.7	15.6	-55.56	15.3	0.0	958.0	926.2	31.78	30.148		
7,200.0	7,100.8	7,100.8	7,100.8	23.8	15.8	-55.56	15.3	0.0	958.0	925.8	32.19	29.762		
7,249.2	7,150.0	7,150.0	7,150.0	23.9	16.0	-55.56	15.3	0.0	958.0	925.6	32.39	29.576		

<b>Company:</b>	Bayswater Exploration & Production, LLC	<b>Local Co-ordinate Reference:</b>	Well Staley 10-7
<b>Project:</b>	SEC.7-T6N-R67W	<b>TVD Reference:</b>	WELL @ 4836.0ft (Original Well Elev)
<b>Reference Site:</b>	Staley 10-7 Pad Sec.7-T6N-R67W	<b>MD Reference:</b>	WELL @ 4836.0ft (Original Well Elev)
<b>Site Error:</b>	0.0ft	<b>North Reference:</b>	True
<b>Reference Well:</b>	Staley 10-7	<b>Survey Calculation Method:</b>	Minimum Curvature
<b>Well Error:</b>	0.0ft	<b>Output errors are at</b>	2.00 sigma
<b>Reference Wellbore</b>	Wellbore #1	<b>Database:</b>	Landmark
<b>Reference Design:</b>	Plan #1 (5-16-13)	<b>Offset TVD Reference:</b>	Offset Datum

Reference Depths are relative to WELL @ 4836.0ft (Original Well Elev) Coordinates are relative to: Staley 10-7  
 Offset Depths are relative to Offset Datum Coordinate System is US State Plane 1983, Colorado Northern Zone  
 Central Meridian is -105.500000 ° Grid Convergence at Surface is: 0.36°



<b>Company:</b>	Bayswater Exploration & Production, LLC	<b>Local Co-ordinate Reference:</b>	Well Staley 10-7
<b>Project:</b>	SEC.7-T6N-R67W	<b>TVD Reference:</b>	WELL @ 4836.0ft (Original Well Elev)
<b>Reference Site:</b>	Staley 10-7 Pad Sec.7-T6N-R67W	<b>MD Reference:</b>	WELL @ 4836.0ft (Original Well Elev)
<b>Site Error:</b>	0.0ft	<b>North Reference:</b>	True
<b>Reference Well:</b>	Staley 10-7	<b>Survey Calculation Method:</b>	Minimum Curvature
<b>Well Error:</b>	0.0ft	<b>Output errors are at</b>	2.00 sigma
<b>Reference Wellbore</b>	Wellbore #1	<b>Database:</b>	Landmark
<b>Reference Design:</b>	Plan #1 (5-16-13)	<b>Offset TVD Reference:</b>	Offset Datum

Reference Depths are relative to WELL @ 4836.0ft (Original Well Elev)Coordinates are relative to: Staley 10-7  
Offset Depths are relative to Offset Datum Coordinate System is US State Plane 1983, Colorado Northern Zone  
Central Meridian is -105.500000 ° Grid Convergence at Surface is: 0.36°

