



Multiple Propagation Resistivity
Gamma Ray

Memory/Realtime Log

Scale:

1:240

Measured Depth

Company: Kerr-McGee Oil & Gas Onshore LP

Well: Turkey Springs 2C-14HZ

Field: Weld County (Kerr-McGee)

Region: Continental US Country: United States

Status:

Final Print

Surface Location:

Latitude: 40° 7' 48.680" N

Longitude: 104° 44' 18.316" W

Other Services:

Directional
VSS

API Number:
051233681200

Section 23 TWN: 2S Range 66 W

Permanent Datum (P.D.): Drill Floor Elevation: 5115.00 ft.

Log Measured From: Ground Level 13.00 ft. Above P.D.

Depth Reference: Driller's Depth

Elevations: N/A

KB: 5115.00 ft.

DF: 5102.00 ft.

GL: 5102.00 ft.

Interval Logged

Dates

Magnetic Field Reference

Top: 6868 ft. Date From: 31/May/13 Dip Angle: 66.96° Azi Reference North: True

Bottom: 12200 ft. Date To: 04/Jun/13 Total Mag to Reference

Spud Date: 29/May/13 Field Strength: 52873.0 nT North Correction: 8.50°

Borehole Record

Casing Record

| Hole Size | From | To | Size | Weight | From | To |
|------------|----------|-----------|-----------|-------------|---------|----------|
| 13.500 in. | Surface | 1028 ft. | 9.625 in. | 36.00 lb/ft | Surface | 1025 ft. |
| 8.750 in. | 1028 ft. | 7991 ft. | 7.000 in. | 26.00 lb/ft | Surface | 7967 ft. |
| 6.125 in. | 7991 ft. | 12254 ft. | | | | |
| | | | | | | |
| | | | | | | |
| | | | | | | |
| | | | | | | |
| | | | | | | |

Mud Record

Deviation Record

| Type | From | To | Hole Size | Interval | Inc / Az (Start) | Inc / Az (End) |
|-------------|----------|-----------|------------|----------|------------------|----------------|
| Water Based | 1000 ft. | 12254 ft. | 13.500 in. | 1028 ft. | 0.2° / 197.1° | 0.4° / 123.3° |
| | | | 8.750 in. | 6963 ft. | 0.4° / 104.1° | 84.2° / 0.9° |
| | | | 6.125 in. | 4263 ft. | 84.2° / 0.9° | 89.7° / 359.9° |
| | | | | | / | / |
| | | | | | / | / |
| | | | | | / | / |
| | | | | | / | / |

Acquisition System Software Version

Other

| | | | | |
|-----------|----------|-------------------|------------|-------------------|
| Advantage | 2.20U4 | Rpt / Contractor: | Ensign 138 | / Ensign Drilling |
| PAIS | 6.4.1.34 | Job No: | 5513355 | |
| | | District / Unit: | RMD | / D&E |

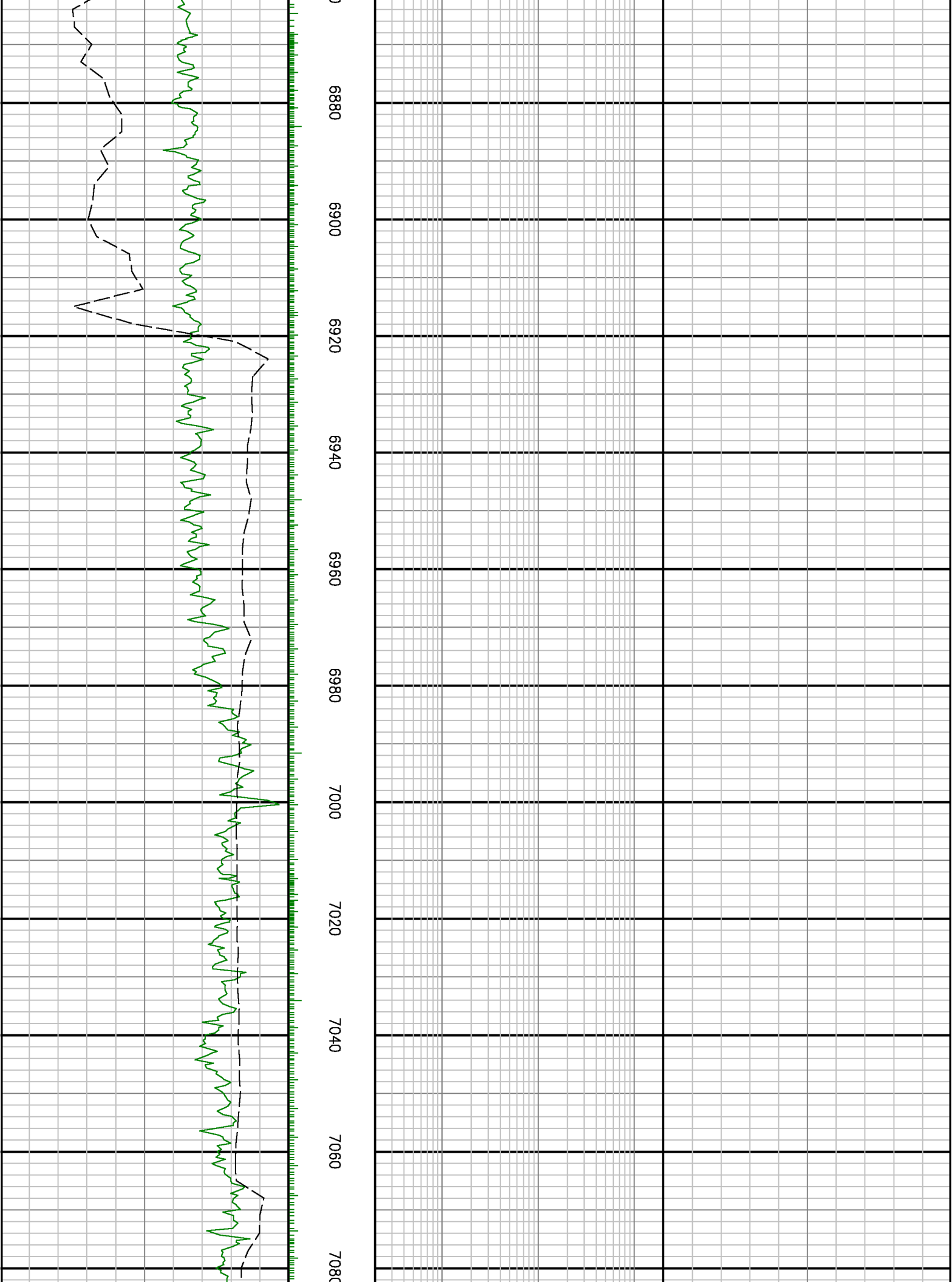
INTEQ does not guarantee the accuracy or correctness of interpretations provided in or from this log. Since all interpretations are opinions based on measurements, INTEQ shall under no circumstances be responsible for consequential damages or any other loss, costs, damages or expenses incurred or sustained in connection with the use of any such interpretations. INTEQ disclaims all expressed and implied warranties related to this service. INTEQ's liabilities and obligations shall be governed by INTEQ's Standard Terms and Conditions.

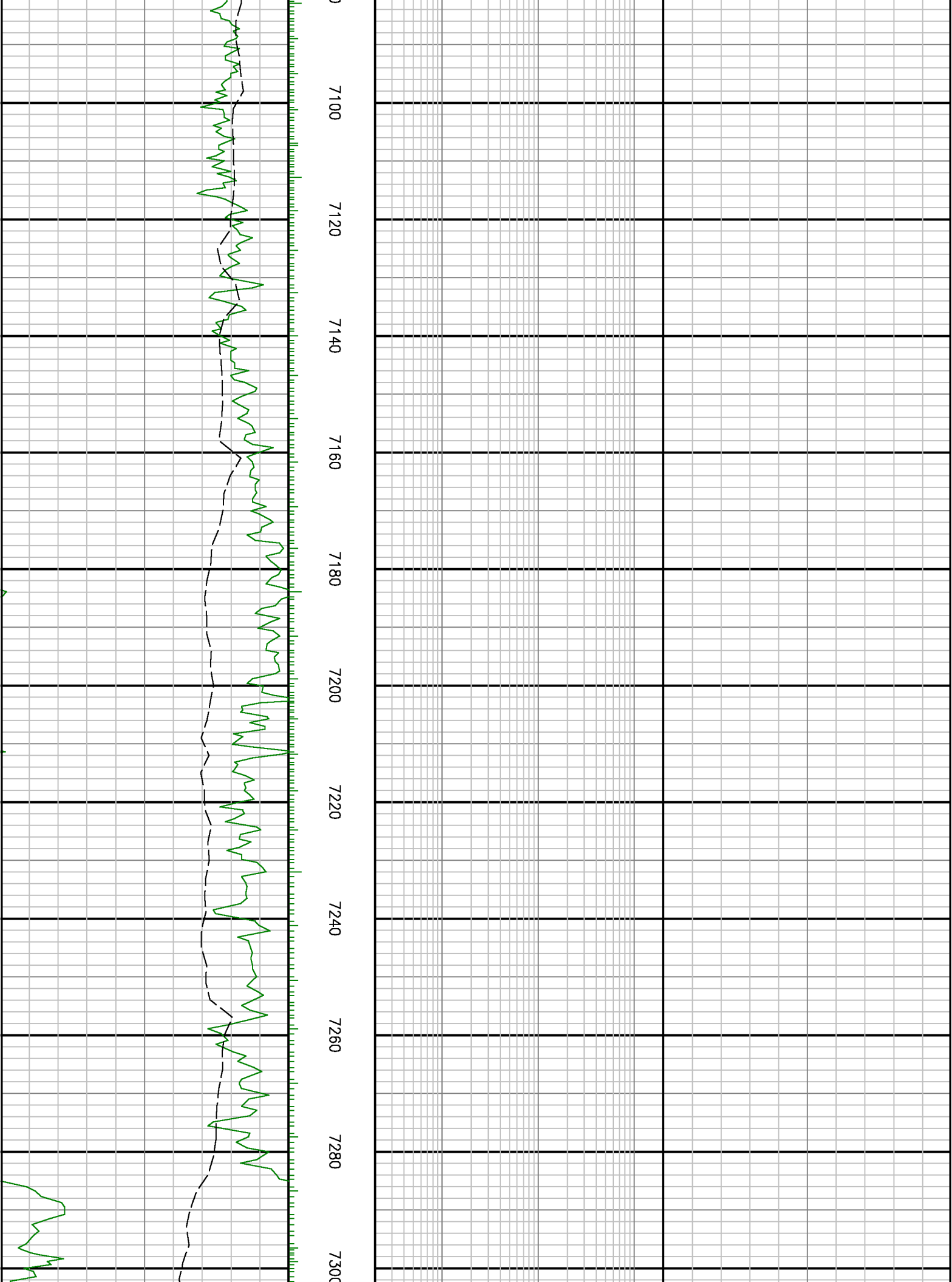
Log Run Summary

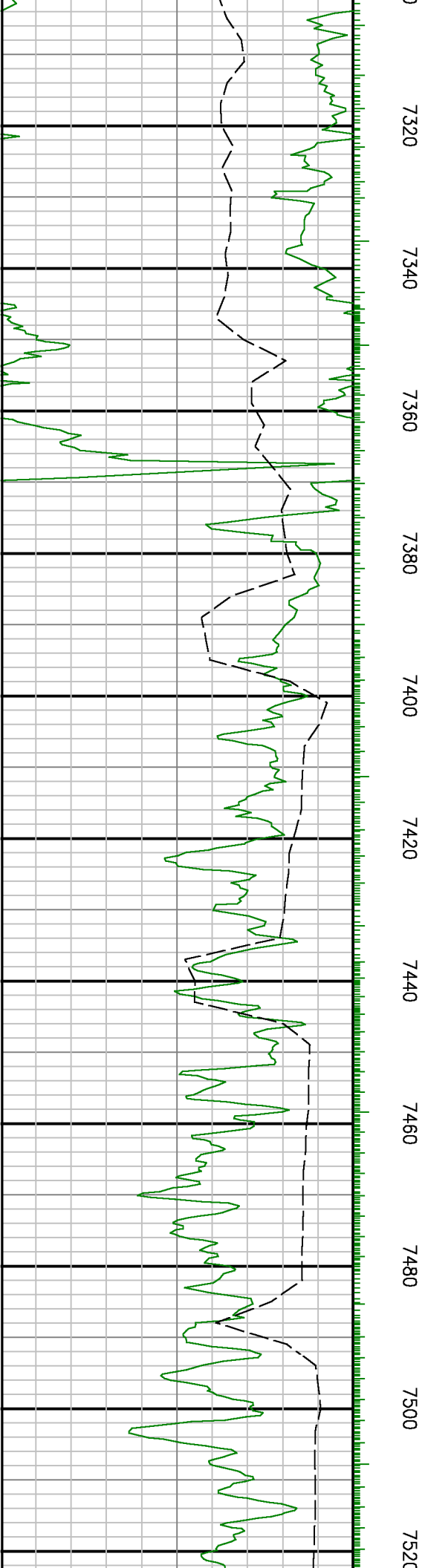
| LWD Run No. | BHA Run No. | Bit Run No. | Bit Size (in.) | Bit Type | Bit Gauge Length (in.) | Assembly Type | Logged Interval | | Bit Depth Interval | | Date / Time | | Circ. Time (hrs.) |
|-------------|-------------|-------------|----------------|----------|------------------------|---------------|-----------------|--------------|--------------------|----------|-------------------|-------------------|-------------------|
| | | | | | | | Top (ft.) | Bottom (ft.) | From (ft.) | To (ft.) | Start | End | |
| 1 | 2 | 2 | 8.750 | PDC | 2.500 | Steerable | 6868 | 7941 | 1027 | 7994 | 30/May/2013 12:53 | 01/Jun/2013 09:33 | 38.28 |
| 2 | 2 | 3 | 8.750 | PDC | 2.500 | Steerable | 6868 | 12200 | 7992 | 12254 | 02/Jun/2013 12:50 | 04/Jun/2013 02:51 | 30.5 |

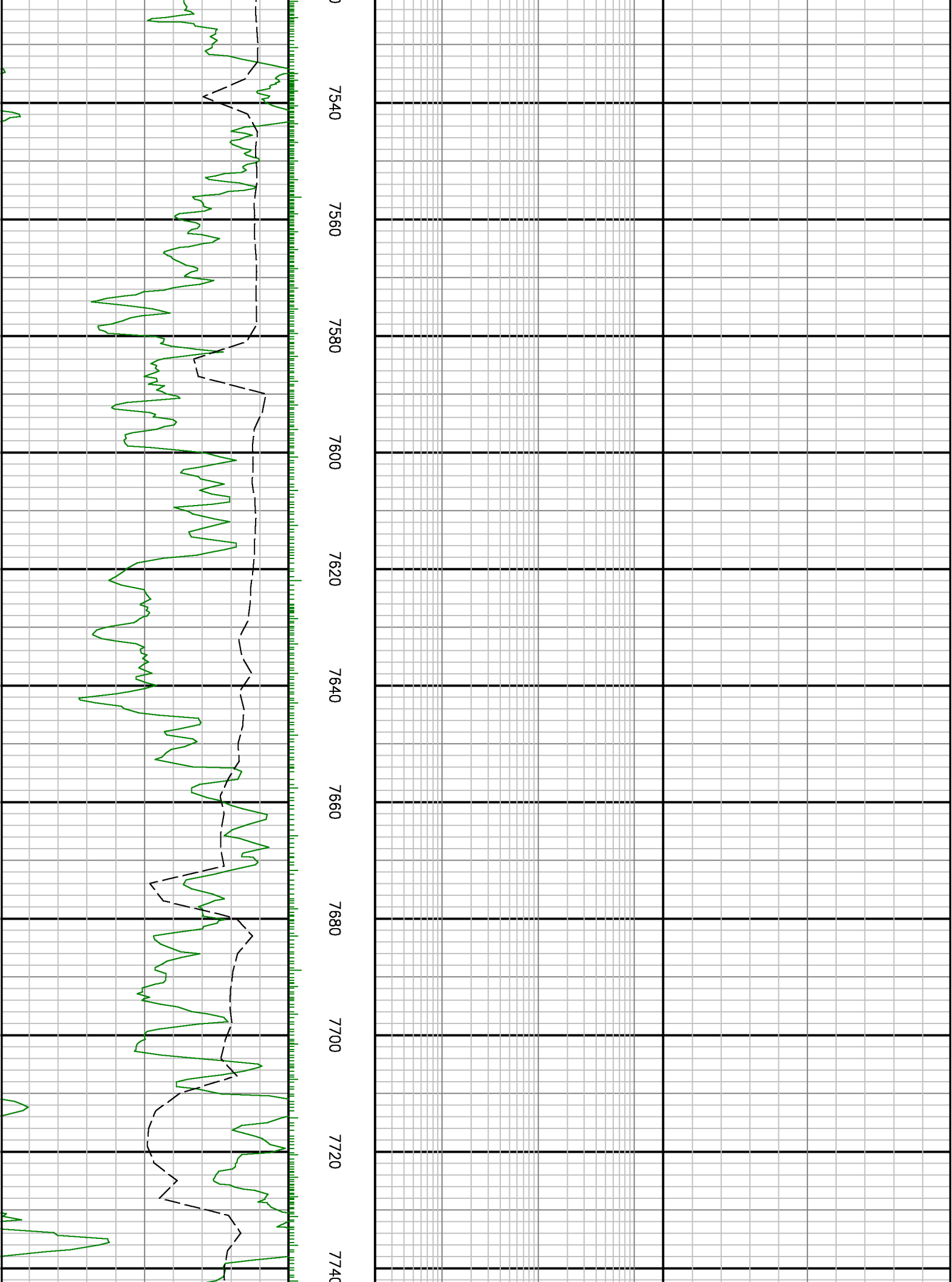
Crew

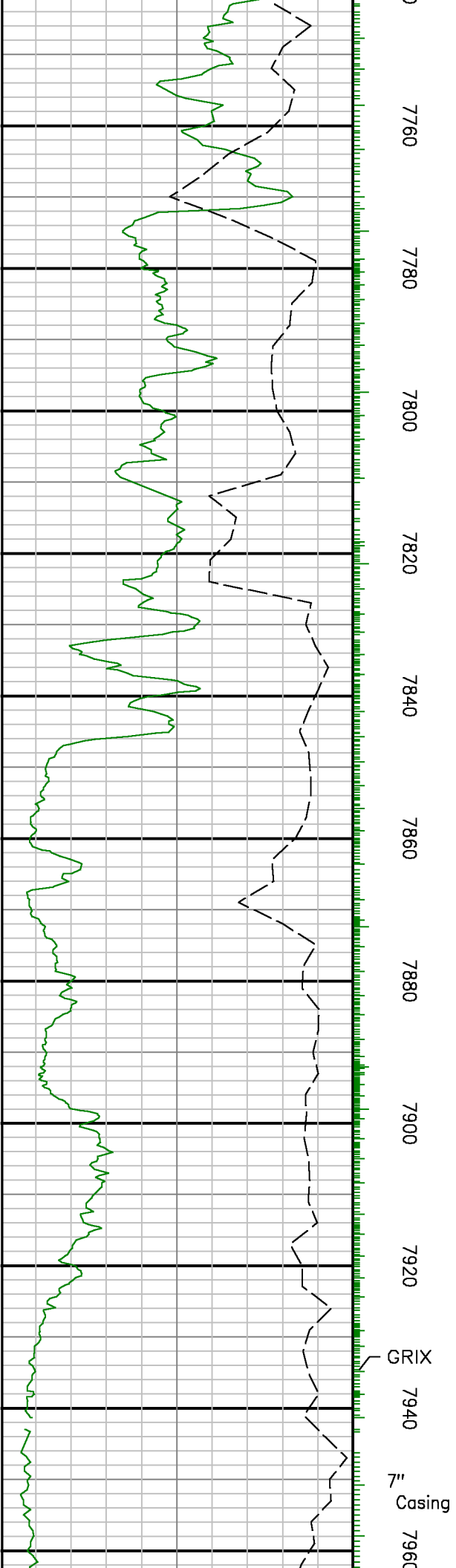
| Name | Arrive | Depart | Name | Arrive | Depart | Name | Arrive | Depart |
|----------------|-------------|------------|-----------------|-------------|------------|------------|-------------|------------|
| | Wellsite | Wellsite | | Wellsite | Wellsite | | Wellsite | Wellsite |
| David Campbell | May 29 2013 | Jun 5 2013 | Robert Bartlett | May 29 2013 | Jun 5 2013 | Will Drake | May 29 2013 | Jun 5 2013 |
| David Belek | May 29 2013 | Jun 5 2013 | | | | | | |

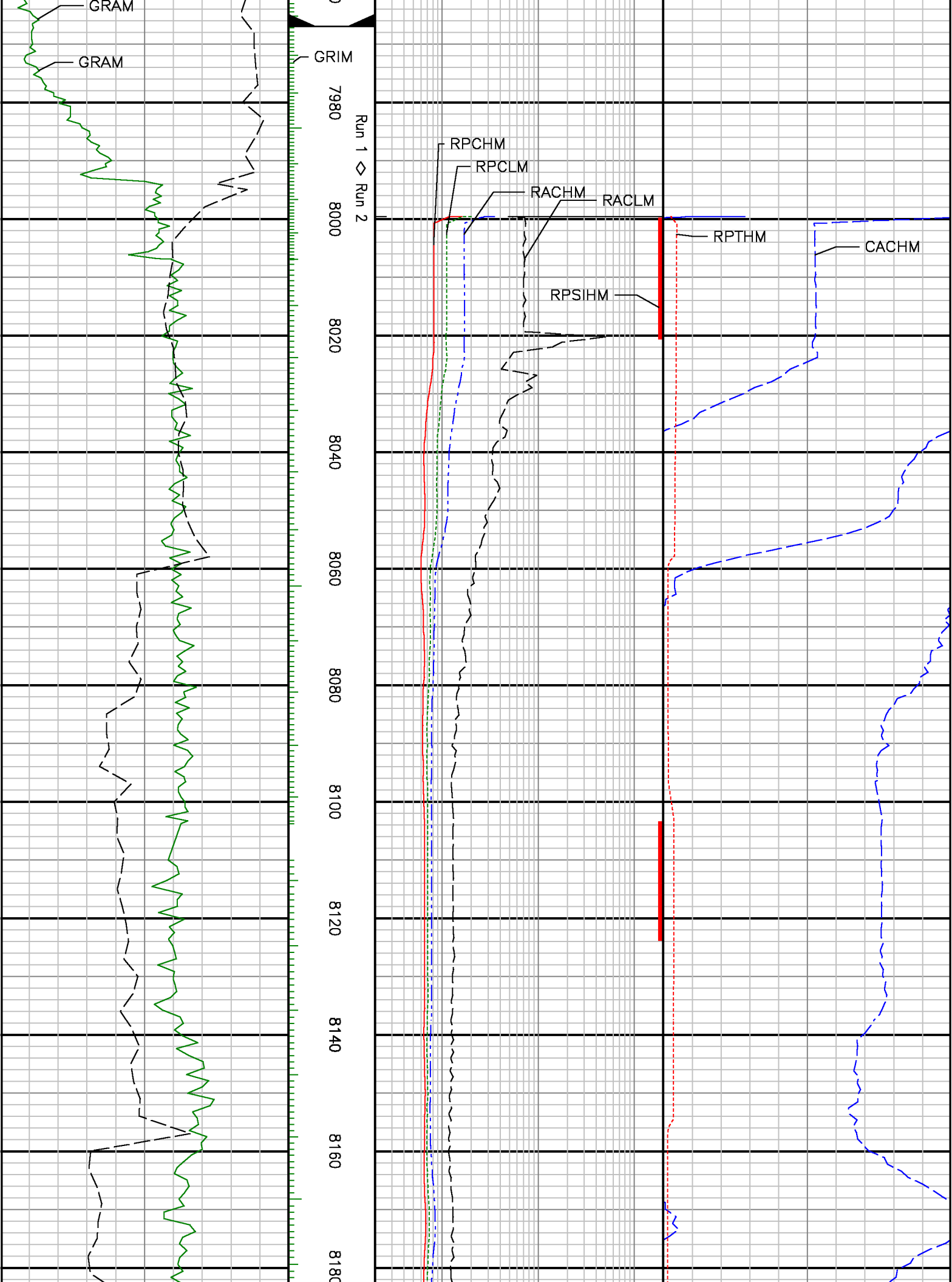


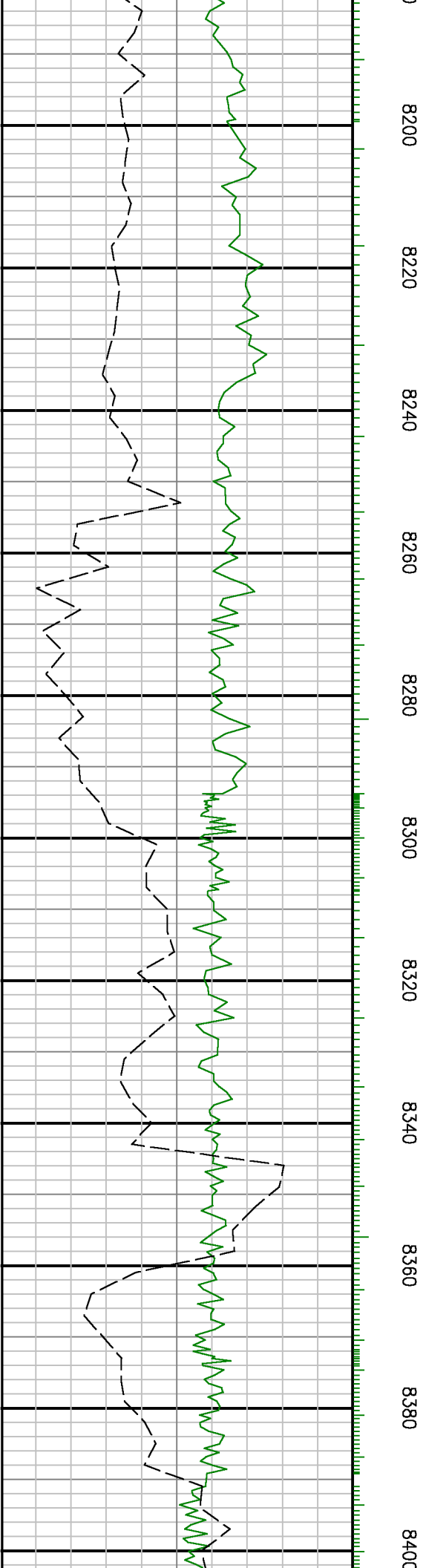














8420 8440 8460 8480 8500 8520 8540 8560 8580 8600 8620

