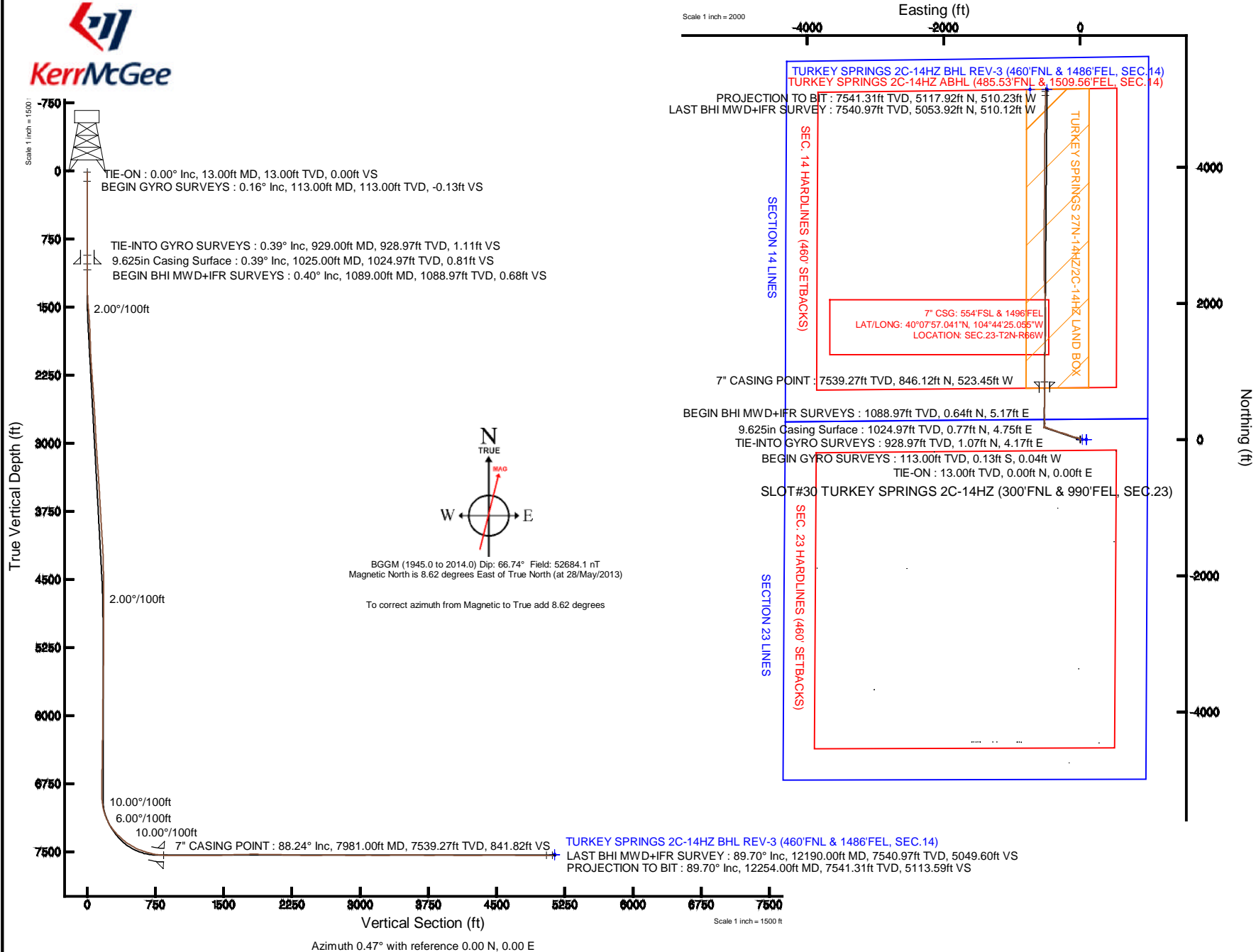


KERR-MCGEE OIL & GAS ONSHORE LP

Location: COLORADO Slot: SLOT#30 TURKEY SPRINGS 2C-14HZ (300'FNL & 990'FEL, SEC.23)
 Field: WELD COUNTY (KERR MCGEE) Well: TURKEY SPRINGS 2C-14HZ
 Facility: SEC.23-T2N-R66W Wellbore: TURKEY SPRINGS 2C-14HZ PWB

Plot reference wellpath is TURKEY SPRINGS 2C-14HZ (REV-C.0) PWP

True vertical depths are referenced to ENSGIN 138 (RKB)	Grid System: NAD83 / Lambert Colorado SP, Northern Zone (501), US feet
Measured depths are referenced to ENSGIN 138 (RKB)	North Reference: True north
ENSGIN 138 (RKB) to Mean Sea Level: 5115 feet	Scale: True distance
Mean Sea Level to Mud line (At Slot: SLOT#30 TURKEY SPRINGS 2C-14HZ (300'FNL & 990'FEL, SEC.23)): 0 feet	Depths are in feet
Coordinates are in feet referenced to Slot	Created by: robiale01 on 17/Jun/2013





Actual Wellpath Report

TURKEY SPRINGS 2C-14HZ AWP

Page 1 of 6



REFERENCE WELLPATH IDENTIFICATION

Operator	KERR-MCGEE OIL & GAS ONSHORE LP	Slot	SLOT#30 TURKEY SPRINGS 2C-14HZ (300'FNL & 990'FEL, SEC.23)
Area	COLORADO	Well	TURKEY SPRINGS 2C-14HZ
Field	WELD COUNTY (KERR MCGEE)	Wellbore	TURKEY SPRINGS 2C-14HZ AWB
Facility	SEC.23-T2N-R66W		

REPORT SETUP INFORMATION

Projection System	NAD83 / Lambert Colorado SP, Northern Zone (501), US feet	Software System	WellArchitect® 4.0.0
North Reference	True	User	Robiale01
Scale	0.999959	Report Generated	17/Jun/2013 at 11:45
Convergence at slot	n/a	Database/Source file	WA_ANADARKO/TURKEY_SPRINGS_2C-14HZ_AWB.xml

WELLPATH LOCATION

	Local coordinates		Grid coordinates		Geographic coordinates	
	North[ft]	East[ft]	Easting[US ft]	Northing[US ft]	Latitude	Longitude
Slot Location	4749.90	135.62	3212949.14	1291186.04	40°07'48.680"N	104°44'18.316"W
Facility Reference Pt			3212854.29	1286435.36	40°07'01.741"N	104°44'20.062"W
Field Reference Pt			3197771.84	1268891.29	40°04'09.600"N	104°47'36.000"W

WELLPATH DATUM

Calculation method	Minimum curvature	ENSGIN 138 (RKB) to Facility Vertical Datum	5115.00ft
Horizontal Reference Pt	Slot	ENSGIN 138 (RKB) to Mean Sea Level	5115.00ft
Vertical Reference Pt	ENSGIN 138 (RKB)	ENSGIN 138 (RKB) to Mud Line at Slot (SLOT#30 TURKEY SPRINGS 2C-14HZ (300'FNL & 990'FEL, SEC.23))	5115.00ft
MD Reference Pt	ENSGIN 138 (RKB)	Section Origin	N 0.00, E 0.00 ft
Field Vertical Reference	Mean Sea Level	Section Azimuth	354.31°



Actual Wellpath Report

TURKEY SPRINGS 2C-14HZ AWP

Page 2 of 6



REFERENCE WELLPATH IDENTIFICATION

Operator	KERR-MCGEE OIL & GAS ONSHORE LP	Slot	SLOT#30 TURKEY SPRINGS 2C-14HZ (300'FNL & 990'FEL, SEC.23)
Area	COLORADO	Well	TURKEY SPRINGS 2C-14HZ
Field	WELD COUNTY (KERR MCGEE)	Wellbore	TURKEY SPRINGS 2C-14HZ AWP
Facility	SEC.23-T2N-R66W		

WELLPATH DATA (129 stations) † = interpolated/extrapolated station

MD [ft]	Inclination [°]	Azimuth [°]	TVD [ft]	Vert Sect [ft]	North [ft]	East [ft]	Latitude	Longitude	DLS [°/100ft]	Comments
0.00†	0.000	197.100	0.00	0.00	0.00	0.00	40°07'48.680"N	104°44'18.316"W	0.00	
13.00	0.000	197.100	13.00	0.00	0.00	0.00	40°07'48.680"N	104°44'18.316"W	0.00	TIE-ON
113.00	0.160	197.100	113.00	-0.13	-0.13	-0.04	40°07'48.679"N	104°44'18.317"W	0.16	BEGIN GYRO SURVEYS
213.00	0.070	340.880	213.00	-0.20	-0.21	-0.10	40°07'48.678"N	104°44'18.317"W	0.22	
313.00	0.220	327.440	313.00	0.03	0.01	-0.23	40°07'48.680"N	104°44'18.319"W	0.15	
413.00	0.310	3.610	413.00	0.47	0.44	-0.31	40°07'48.684"N	104°44'18.320"W	0.19	
513.00	0.470	45.270	513.00	1.00	1.00	0.00	40°07'48.690"N	104°44'18.316"W	0.32	
613.00	0.770	76.250	612.99	1.35	1.45	0.94	40°07'48.694"N	104°44'18.304"W	0.44	
713.00	0.760	94.680	712.98	1.32	1.55	2.25	40°07'48.695"N	104°44'18.287"W	0.25	
813.00	0.520	108.170	812.98	1.02	1.36	3.35	40°07'48.693"N	104°44'18.273"W	0.28	
913.00	0.360	108.210	912.97	0.71	1.12	4.08	40°07'48.691"N	104°44'18.264"W	0.16	
929.00	0.390	123.350	928.97	0.65	1.07	4.17	40°07'48.691"N	104°44'18.262"W	0.64	TIE-INTO GYRO SURVEYS
1089.00	0.400	104.100	1088.97	0.12	0.64	5.17	40°07'48.686"N	104°44'18.249"W	0.08	BEGIN BHI MWD+IFR SURVEYS
1179.00	0.400	119.200	1178.97	-0.16	0.41	5.74	40°07'48.684"N	104°44'18.242"W	0.12	
1270.00	2.100	289.500	1269.95	0.36	0.81	4.45	40°07'48.688"N	104°44'18.259"W	2.74	
1362.00	4.100	304.300	1361.81	3.20	3.23	0.14	40°07'48.712"N	104°44'18.314"W	2.32	
1475.00	6.900	312.200	1474.28	10.83	10.06	-8.22	40°07'48.779"N	104°44'18.422"W	2.56	
1566.00	9.200	301.000	1564.38	19.23	17.48	-18.51	40°07'48.853"N	104°44'18.554"W	3.05	
1658.00	11.200	291.000	1654.93	27.64	24.47	-33.16	40°07'48.922"N	104°44'18.743"W	2.90	
1749.00	11.000	280.700	1744.24	34.06	29.25	-49.94	40°07'48.969"N	104°44'18.959"W	2.19	
1840.00	11.200	280.600	1833.54	38.99	32.49	-67.16	40°07'49.001"N	104°44'19.181"W	0.22	
1932.00	11.400	279.000	1923.75	43.81	35.56	-84.92	40°07'49.031"N	104°44'19.409"W	0.40	
2023.00	10.600	283.900	2013.08	48.90	38.98	-101.93	40°07'49.065"N	104°44'19.628"W	1.35	
2114.00	10.500	291.200	2102.55	55.45	43.98	-117.79	40°07'49.115"N	104°44'19.832"W	1.47	
2205.00	10.400	290.600	2192.04	62.84	49.87	-133.21	40°07'49.173"N	104°44'20.031"W	0.16	
2297.00	12.000	291.800	2282.28	70.94	56.35	-149.86	40°07'49.237"N	104°44'20.245"W	1.76	
2387.00	11.500	291.500	2370.40	79.35	63.11	-166.89	40°07'49.304"N	104°44'20.465"W	0.56	
2477.00	10.900	290.100	2458.68	87.16	69.32	-183.23	40°07'49.365"N	104°44'20.675"W	0.73	
2569.00	11.900	289.800	2548.87	95.03	75.52	-200.33	40°07'49.426"N	104°44'20.895"W	1.09	
2660.00	11.300	287.900	2638.01	102.63	81.44	-217.64	40°07'49.485"N	104°44'21.118"W	0.78	
2751.00	10.400	288.200	2727.38	109.53	86.75	-233.92	40°07'49.537"N	104°44'21.328"W	0.99	
2843.00	10.400	284.900	2817.87	115.81	91.48	-249.84	40°07'49.584"N	104°44'21.532"W	0.65	
2934.00	11.100	283.900	2907.27	121.64	95.69	-266.28	40°07'49.626"N	104°44'21.744"W	0.80	
3025.00	11.100	287.500	2996.57	128.03	100.43	-283.14	40°07'49.672"N	104°44'21.961"W	0.76	
3115.00	12.600	288.100	3084.65	135.40	106.09	-300.73	40°07'49.728"N	104°44'22.188"W	1.67	
3205.00	12.000	289.800	3172.59	143.39	112.31	-318.86	40°07'49.790"N	104°44'22.421"W	0.78	
3300.00	11.400	290.600	3265.61	151.79	118.96	-336.94	40°07'49.856"N	104°44'22.654"W	0.65	
3396.00	11.800	288.400	3359.65	160.00	125.39	-355.14	40°07'49.919"N	104°44'22.888"W	0.62	
3491.00	10.800	289.000	3452.81	167.69	131.36	-372.77	40°07'49.978"N	104°44'23.115"W	1.06	
3585.00	11.500	288.300	3545.03	175.18	137.17	-390.00	40°07'50.035"N	104°44'23.337"W	0.76	
3680.00	11.200	286.600	3638.18	182.53	142.78	-407.83	40°07'50.091"N	104°44'23.566"W	0.47	
3775.00	11.400	288.200	3731.33	189.83	148.34	-425.59	40°07'50.146"N	104°44'23.795"W	0.39	
3870.00	10.400	289.700	3824.62	197.31	154.17	-442.58	40°07'50.203"N	104°44'24.014"W	1.09	
3965.00	9.500	292.500	3918.19	204.69	160.06	-457.90	40°07'50.262"N	104°44'24.211"W	1.08	
4059.00	8.500	293.900	4011.03	211.79	165.84	-471.42	40°07'50.319"N	104°44'24.385"W	1.09	



Actual Wellpath Report

TURKEY SPRINGS 2C-14HZ AWP

Page 3 of 6



REFERENCE WELLPATH IDENTIFICATION			
Operator	KERR-MCGEE OIL & GAS ONSHORE LP	Slot	SLOT#30 TURKEY SPRINGS 2C-14HZ (300'FNL & 990'FEL, SEC.23)
Area	COLORADO	Well	TURKEY SPRINGS 2C-14HZ
Field	WELD COUNTY (KERR MCGEE)	Wellbore	TURKEY SPRINGS 2C-14HZ AWP
Facility	SEC.23-T2N-R66W		

WELLPATH DATA (129 stations) † = interpolated/extrapolated station

MD [ft]	Inclination [°]	Azimuth [°]	TVD [ft]	Vert Sect [ft]	North [ft]	East [ft]	Latitude	Longitude	DLS [°/100ft]	Comments
4154.00	7.900	293.900	4105.06	218.48	171.33	-483.81	40°07'50.373"N	104°44'24.545"W	0.63	
4248.00	6.600	294.100	4198.31	224.35	176.15	-494.64	40°07'50.421"N	104°44'24.684"W	1.38	
4343.00	6.100	288.100	4292.72	229.10	179.95	-504.42	40°07'50.458"N	104°44'24.810"W	0.87	
4438.00	4.600	278.200	4387.31	232.05	182.06	-512.99	40°07'50.479"N	104°44'24.920"W	1.85	
4533.00	3.300	283.800	4482.08	233.88	183.26	-519.42	40°07'50.491"N	104°44'25.003"W	1.43	
4628.00	1.900	278.800	4576.98	235.19	184.15	-523.63	40°07'50.500"N	104°44'25.057"W	1.49	
4722.00	0.600	211.800	4670.96	235.19	183.97	-525.43	40°07'50.498"N	104°44'25.081"W	1.87	
4912.00	1.200	303.600	4860.94	235.66	184.23	-527.61	40°07'50.500"N	104°44'25.109"W	0.71	
5006.00	0.500	280.900	4954.93	236.40	184.85	-528.83	40°07'50.507"N	104°44'25.124"W	0.81	
5197.00	0.900	340.100	5145.92	238.09	186.42	-530.16	40°07'50.522"N	104°44'25.141"W	0.41	
5291.00	1.100	185.200	5239.91	237.92	186.21	-530.50	40°07'50.520"N	104°44'25.146"W	2.08	
5481.00	1.000	186.900	5429.88	234.51	182.75	-530.86	40°07'50.486"N	104°44'25.150"W	0.06	
5860.00	0.600	201.400	5808.85	229.52	177.62	-531.98	40°07'50.435"N	104°44'25.165"W	0.12	
6242.00	1.600	114.700	6190.79	225.04	173.53	-527.87	40°07'50.395"N	104°44'25.112"W	0.44	
6435.00	0.900	151.800	6383.74	222.27	171.07	-524.70	40°07'50.370"N	104°44'25.071"W	0.54	
6624.00	1.300	161.700	6572.71	218.81	167.72	-523.33	40°07'50.337"N	104°44'25.053"W	0.23	
6864.00	0.400	211.300	6812.68	215.49	164.42	-522.91	40°07'50.305"N	104°44'25.048"W	0.45	
6908.00	0.300	234.700	6856.68	215.31	164.22	-523.08	40°07'50.303"N	104°44'25.050"W	0.39	
6955.00	2.300	4.500	6903.67	216.17	165.09	-523.11	40°07'50.311"N	104°44'25.051"W	5.32	
7005.00	6.300	3.100	6953.52	219.87	168.83	-522.88	40°07'50.348"N	104°44'25.048"W	8.00	
7052.00	10.400	7.000	7000.01	226.56	175.62	-522.22	40°07'50.415"N	104°44'25.039"W	8.80	
7100.00	14.400	6.500	7046.88	236.63	185.86	-521.02	40°07'50.517"N	104°44'25.024"W	8.34	
7195.00	23.100	3.400	7136.76	266.63	216.26	-518.57	40°07'50.817"N	104°44'24.992"W	9.21	
7289.00	33.700	358.200	7219.34	310.99	260.86	-518.30	40°07'51.258"N	104°44'24.989"W	11.57	
7336.00	39.200	357.100	7257.13	338.86	288.75	-519.46	40°07'51.533"N	104°44'25.004"W	11.78	
7385.00	42.700	355.600	7294.13	370.95	320.79	-521.52	40°07'51.850"N	104°44'25.030"W	7.42	
7432.00	44.900	356.700	7328.05	403.46	353.25	-523.70	40°07'52.171"N	104°44'25.058"W	4.95	
7480.00	48.500	358.900	7360.97	438.31	388.15	-525.02	40°07'52.516"N	104°44'25.075"W	8.21	
7527.00	52.200	0.800	7390.96	474.32	424.32	-525.10	40°07'52.873"N	104°44'25.076"W	8.46	
7574.00	56.400	0.900	7418.38	512.23	462.48	-524.53	40°07'53.250"N	104°44'25.069"W	8.94	
7621.00	60.600	1.500	7442.93	552.01	502.54	-523.69	40°07'53.646"N	104°44'25.058"W	9.00	
7669.00	65.500	1.200	7464.68	594.46	545.30	-522.68	40°07'54.069"N	104°44'25.045"W	10.22	
7716.00	68.400	359.900	7483.08	637.45	588.54	-522.27	40°07'54.496"N	104°44'25.040"W	6.67	
7763.00	71.400	358.900	7499.23	681.40	632.67	-522.74	40°07'54.932"N	104°44'25.046"W	6.69	
7810.00	74.500	358.300	7513.01	726.21	677.58	-523.84	40°07'55.376"N	104°44'25.060"W	6.71	
7858.00	78.000	359.600	7524.41	772.67	724.19	-524.69	40°07'55.836"N	104°44'25.071"W	7.75	
7934.00	84.200	0.900	7536.17	847.31	799.24	-524.35	40°07'56.578"N	104°44'25.067"W	8.33	
7981.00†	88.240	1.313	7539.27	893.87	846.12	-523.45	40°07'57.041"N	104°44'25.055"W	8.64	7" CASING POINT
7991.00	89.100	1.400	7539.50	903.79	856.11	-523.21	40°07'57.140"N	104°44'25.052"W	8.64	
8085.00	89.400	359.800	7540.73	997.21	950.09	-522.22	40°07'58.069"N	104°44'25.039"W	1.73	
8181.00	89.600	1.300	7541.57	1092.64	1046.08	-521.30	40°07'59.017"N	104°44'25.028"W	1.58	
8275.00	89.300	0.600	7542.47	1186.00	1140.06	-519.74	40°07'59.946"N	104°44'25.008"W	0.81	
8370.00	90.700	1.500	7542.47	1280.34	1235.05	-518.00	40°08'00.885"N	104°44'24.985"W	1.75	
8467.00	90.500	1.300	7541.45	1376.59	1332.01	-515.63	40°08'01.843"N	104°44'24.955"W	0.29	
8561.00	90.700	1.300	7540.47	1469.89	1425.98	-513.50	40°08'02.772"N	104°44'24.927"W	0.21	



Actual Wellpath Report

TURKEY SPRINGS 2C-14HZ AWP

Page 4 of 6



REFERENCE WELLPATH IDENTIFICATION

Operator	KERR-MCGEE OIL & GAS ONSHORE LP	Slot	SLOT#30 TURKEY SPRINGS 2C-14HZ (300'FNL & 990'FEL, SEC.23)
Area	COLORADO	Well	TURKEY SPRINGS 2C-14HZ
Field	WELD COUNTY (KERR MCGEE)	Wellbore	TURKEY SPRINGS 2C-14HZ AWP
Facility	SEC.23-T2N-R66W		

WELLPATH DATA (129 stations)

MD [ft]	Inclination [°]	Azimuth [°]	TVD [ft]	Vert Sect [ft]	North [ft]	East [ft]	Latitude	Longitude	DLS [°/100ft]	Comments
8657.00	92.400	1.600	7537.87	1565.10	1521.91	-511.07	40°08'03.720"N	104°44'24.896"W	1.80	
8751.00	92.600	0.900	7533.77	1658.33	1615.80	-509.03	40°08'04.647"N	104°44'24.870"W	0.77	
8847.00	91.200	0.000	7530.59	1753.72	1711.74	-508.27	40°08'05.596"N	104°44'24.860"W	1.73	
8942.00	90.800	0.300	7528.93	1848.21	1806.73	-508.02	40°08'06.534"N	104°44'24.857"W	0.53	
9036.00	88.400	357.800	7529.59	1941.87	1900.70	-509.58	40°08'07.463"N	104°44'24.877"W	3.69	
9131.00	89.300	357.800	7531.49	2036.68	1995.61	-513.23	40°08'08.401"N	104°44'24.924"W	0.95	
9225.00	88.800	358.500	7533.05	2130.45	2089.54	-516.26	40°08'09.329"N	104°44'24.963"W	0.92	
9321.00	88.300	358.100	7535.48	2226.19	2185.47	-519.11	40°08'10.277"N	104°44'25.000"W	0.67	
9416.00	88.700	357.600	7537.97	2320.97	2280.37	-522.67	40°08'11.215"N	104°44'25.046"W	0.67	
9510.00	88.700	358.600	7540.10	2414.74	2374.29	-525.79	40°08'12.143"N	104°44'25.086"W	1.06	
9605.00	90.100	359.100	7541.10	2509.43	2469.27	-527.69	40°08'13.081"N	104°44'25.110"W	1.56	
9700.00	91.300	359.800	7539.93	2604.04	2564.25	-528.61	40°08'14.020"N	104°44'25.122"W	1.46	
9794.00	90.500	0.100	7538.46	2697.57	2658.24	-528.69	40°08'14.949"N	104°44'25.123"W	0.91	
9889.00	89.700	359.500	7538.29	2792.14	2753.24	-529.02	40°08'15.888"N	104°44'25.127"W	1.05	
9984.00	89.000	359.200	7539.37	2886.76	2848.22	-530.10	40°08'16.826"N	104°44'25.141"W	0.80	
10079.00	90.300	359.500	7539.95	2981.39	2943.21	-531.17	40°08'17.765"N	104°44'25.155"W	1.40	
10174.00	90.300	1.200	7539.45	3075.86	3038.21	-530.59	40°08'18.704"N	104°44'25.148"W	1.79	
10270.00	89.800	0.800	7539.37	3171.20	3134.19	-528.92	40°08'19.652"N	104°44'25.126"W	0.67	
10365.00	89.900	0.800	7539.62	3265.59	3229.18	-527.59	40°08'20.591"N	104°44'25.109"W	0.11	
10459.00	90.400	1.000	7539.37	3358.97	3323.17	-526.12	40°08'21.520"N	104°44'25.090"W	0.57	
10553.00	90.600	1.200	7538.55	3452.31	3417.15	-524.31	40°08'22.449"N	104°44'25.067"W	0.30	
10648.00	90.400	1.200	7537.72	3546.62	3512.13	-522.32	40°08'23.387"N	104°44'25.041"W	0.21	
10743.00	89.300	0.400	7537.97	3641.00	3607.11	-521.00	40°08'24.326"N	104°44'25.024"W	1.43	
10838.00	89.200	359.900	7539.21	3735.50	3702.10	-520.75	40°08'25.264"N	104°44'25.021"W	0.54	
10932.00	90.400	0.000	7539.54	3829.04	3796.10	-520.83	40°08'26.193"N	104°44'25.022"W	1.28	
11027.00	90.300	359.500	7538.96	3923.61	3891.10	-521.24	40°08'27.132"N	104°44'25.028"W	0.54	
11122.00	89.700	359.400	7538.96	4018.23	3986.09	-522.15	40°08'28.071"N	104°44'25.039"W	0.64	
11216.00	89.000	359.000	7540.03	4111.88	4080.08	-523.47	40°08'29.000"N	104°44'25.056"W	0.86	
11311.00	90.200	0.500	7540.69	4206.45	4175.07	-523.88	40°08'29.938"N	104°44'25.062"W	2.02	
11406.00	90.700	0.300	7539.95	4300.91	4270.07	-523.22	40°08'30.877"N	104°44'25.053"W	0.57	
11502.00	90.100	1.300	7539.28	4396.29	4366.05	-521.88	40°08'31.826"N	104°44'25.036"W	1.21	
11597.00	90.200	1.700	7539.03	4490.54	4461.02	-519.39	40°08'32.764"N	104°44'25.004"W	0.43	
11692.00	90.100	1.200	7538.78	4584.80	4555.99	-516.99	40°08'33.703"N	104°44'24.973"W	0.54	
11787.00	89.700	1.200	7538.94	4679.11	4650.97	-515.00	40°08'34.641"N	104°44'24.947"W	0.42	
11882.00	89.400	0.800	7539.69	4773.46	4745.95	-513.34	40°08'35.580"N	104°44'24.926"W	0.53	
11977.00	89.600	0.600	7540.52	4867.87	4840.94	-512.18	40°08'36.519"N	104°44'24.911"W	0.30	
12071.00	90.100	0.900	7540.77	4961.27	4934.93	-510.95	40°08'37.447"N	104°44'24.895"W	0.62	
12190.00	89.700	359.900	7540.97	5079.60	5053.92	-510.12	40°08'38.623"N	104°44'24.885"W	0.91	LAST BHI MWD+IFR SURVEY
12254.00	89.700	359.900	7541.31	5143.29	5117.92	-510.23	40°08'39.256"N	104°44'24.886"W	0.00	PROJECTION TO BIT



Actual Wellpath Report

TURKEY SPRINGS 2C-14HZ AWP

Page 5 of 6



REFERENCE WELLPATH IDENTIFICATION

Operator	KERR-MCGEE OIL & GAS ONSHORE LP	Slot	SLOT#30 TURKEY SPRINGS 2C-14HZ (300'FNL & 990'FEL, SEC.23)
Area	COLORADO	Well	TURKEY SPRINGS 2C-14HZ
Field	WELD COUNTY (KERR MCGEE)	Wellbore	TURKEY SPRINGS 2C-14HZ AWB
Facility	SEC.23-T2N-R66W		

HOLE & CASING SECTIONS - Ref Wellbore: TURKEY SPRINGS 2C-14HZ AWB Ref Wellpath: TURKEY SPRINGS 2C-14HZ AWP

String/Diameter	Start MD [ft]	End MD [ft]	Interval [ft]	Start TVD [ft]	End TVD [ft]	Start N/S [ft]	Start E/W [ft]	End N/S [ft]	End E/W [ft]
12.25in Open Hole	13.00	1025.00	1012.00	13.00	1024.97	0.00	0.00	0.77	4.75
9.625in Casing Surface	13.00	1025.00	1012.00	13.00	1024.97	0.00	0.00	0.77	4.75
8.75in Open Hole	1025.00	7991.00	6966.00	1024.97	7539.50	0.77	4.75	856.11	-523.21
7in Casing Intermediate	13.00	7981.00	7968.00	13.00	7539.27	0.00	0.00	846.12	-523.45
6.125in Open Hole	7981.00	12254.00	4273.00	7539.27	7541.31	846.12	-523.45	5117.92	-510.23

TARGETS

Name	MD [ft]	TVD [ft]	North [ft]	East [ft]	Grid East [US ft]	Grid North [US ft]	Latitude	Longitude	Shape
SECTION 14 LINES		0.00	0.81	90.10	3213039.23	1291187.62	40°07'48.688"N	104°44'17.156"W	polygon
SECTION 23 LINES		0.00	0.81	90.10	3213039.23	1291187.62	40°07'48.688"N	104°44'17.156"W	polygon
SEC. 14 HARDLINES (460' SETBACKS)		7000.00	0.81	90.10	3213039.23	1291187.62	40°07'48.688"N	104°44'17.156"W	polygon
SEC. 23 HARDLINES (460' SETBACKS)		7000.00	0.81	90.10	3213039.23	1291187.62	40°07'48.688"N	104°44'17.156"W	polygon
TURKEY SPRINGS 2C-14HZ BHL ON PLAT REV-1 (460'FNL & 1736'FEL, SEC.14)		7532.00	5143.15	-736.67	3212168.35	1296322.45	40°08'39.505"N	104°44'27.802"W	point
TURKEY SPRINGS 2C-14HZ BHL REV-2 (460'FNL & 1486'FEL, SEC.14)		7532.00	5143.15	-486.67	3212418.34	1296324.60	40°08'39.505"N	104°44'24.583"W	point
TURKEY SPRINGS 2C-14HZ BHL REV-3 (460'FNL & 1486'FEL, SEC.14)		7538.00	5143.15	-486.67	3212418.34	1296324.60	40°08'39.505"N	104°44'24.583"W	point
TURKEY SPRINGS 27N-14HZ/2C-14HZ LAND BOX		8000.00	0.40	29.98	3212979.11	1291186.70	40°07'48.684"N	104°44'17.930"W	polygon

WELLPATH COMPOSITION - Ref Wellbore: TURKEY SPRINGS 2C-14HZ AWB Ref Wellpath: TURKEY SPRINGS 2C-14HZ AWP

Start MD [ft]	End MD [ft]	Positional Uncertainty Model	Log Name/Comment	Wellbore
13.00	929.00	Generic gyro - continuous (Standard)	MS GYRO SURVEYS <113-929>	TURKEY SPRINGS 2C-14HZ AWB
929.00	7934.00	NaviTrak (MAGCORR,IFR)	BHI MWD+IFR SURVEYS <1089-7934>	TURKEY SPRINGS 2C-14HZ AWB
7934.00	12190.00	OnTrak (MAGCORR,IFR)	BHI MWD+IFR SURVEYS 6 1/8" HOLE <7991-12190>	TURKEY SPRINGS 2C-14HZ AWB
12190.00	12254.00	Blind Drilling (std)	Projection to bit	TURKEY SPRINGS 2C-14HZ AWB



Actual Wellpath Report

TURKEY SPRINGS 2C-14HZ AWP

Page 6 of 6



REFERENCE WELLPATH IDENTIFICATION			
Operator	KERR-MCGEE OIL & GAS ONSHORE LP	Slot	SLOT#30 TURKEY SPRINGS 2C-14HZ (300'FNL & 990'FEL, SEC.23)
Area	COLORADO	Well	TURKEY SPRINGS 2C-14HZ
Field	WELD COUNTY (KERR MCGEE)	Wellbore	TURKEY SPRINGS 2C-14HZ AWB
Facility	SEC.23-T2N-R66W		

WELLPATH COMMENTS				
MD [ft]	Inclination [°]	Azimuth [°]	TVD [ft]	Comment
13.00	0.000	197.100	13.00	TIE-ON
113.00	0.160	197.100	113.00	BEGIN GYRO SURVEYS
929.00	0.390	123.350	928.97	TIE-INTO GYRO SURVEYS
1089.00	0.400	104.100	1088.97	BEGIN BHI MWD+IFR SURVEYS
7981.00	88.240	1.313	7539.27	7" CASING POINT
12190.00	89.700	359.900	7540.97	LAST BHI MWD+IFR SURVEY
12254.00	89.700	359.900	7541.31	PROJECTION TO BIT