

LEGEND:

● PROPOSED LOCATION

SWEPI LP

**MORAPOS CREEK #1-10
SECTION 10, T3N, R91W, 6th P.M.
1763' FNL 2254' FWL**



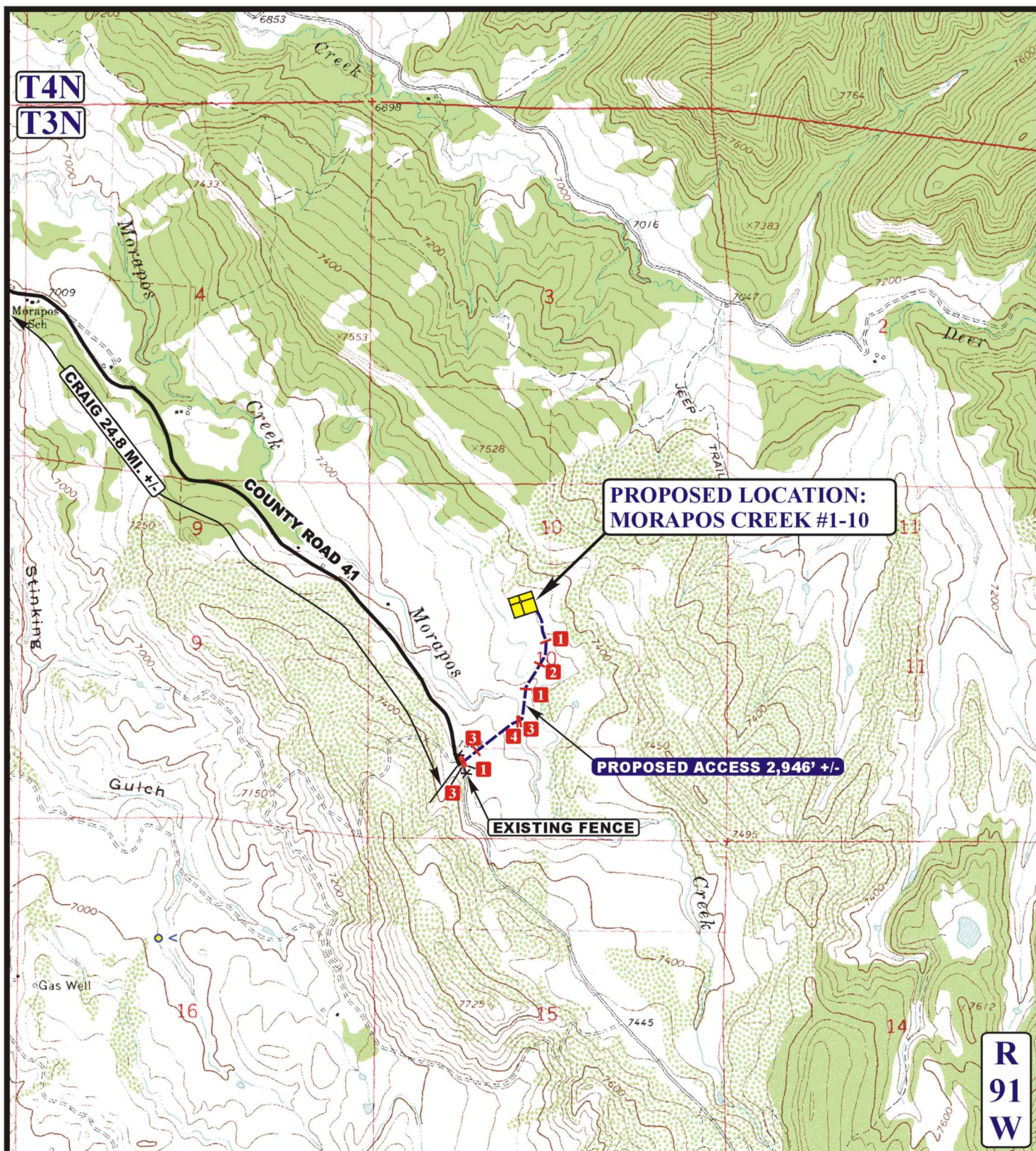
Uintah Engineering & Land Surveying
85 South 200 East Vernal, Utah 84078
(435) 789-1017 * FAX (435) 789-1813

**ACCESS ROAD
MAP**

09 17 12
MONTH DAY YEAR

SCALE: 1:100,000 DRAWN BY: J.L.G. REVISED: 12-03-12





LEGEND:

- EXISTING ROAD
- PROPOSED ACCESS ROAD
- EXISTING FENCE
- 1 18" CMP REQUIRED 2 24" CMP REQUIRED
- 3 CATTLE GUARD REQUIRED 3 2-5' X 2' BOX CMPS REQUIRED



Uintah Engineering & Land Surveying
 85 South 200 East Vernal, Utah 84078
 (435) 789-1017 * FAX (435) 789-1813



SWEPI LP

MORAPOS CREEK #1-10
SECTION 10, T3N, R91W, 6th P.M.
1763' FNL 2254' FWL

ACCESS ROAD
MAP

09 17 12
 MONTH DAY YEAR

SCALE: 1" = 2000' DRAWN BY: J.L.G. REVISED: 12-03-12

B
TOPO