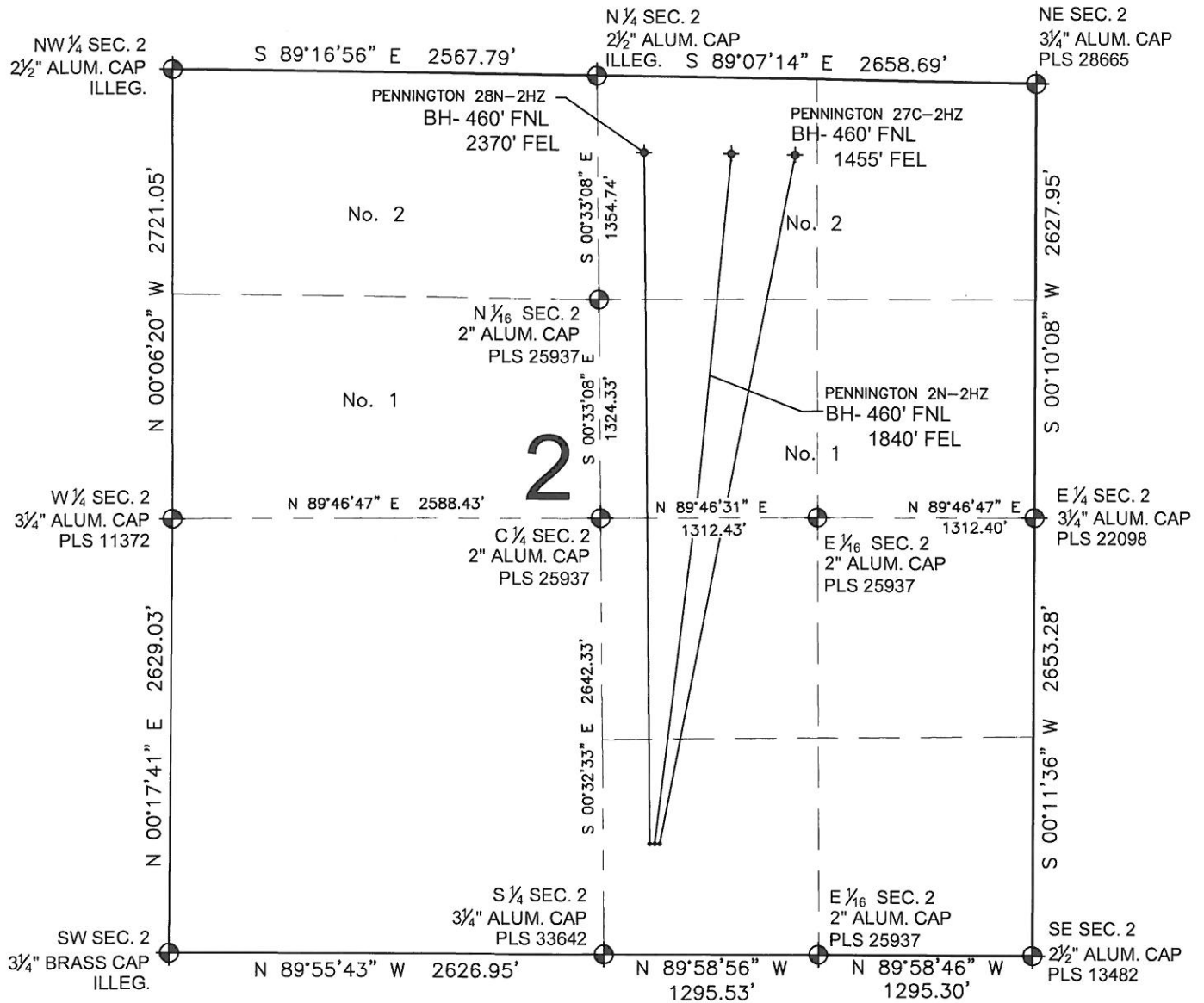


PENNINGTON 2N-2HZ MULTI-WELL PLAN

SECTION 2, TOWNSHIP 2 NORTH, RANGE 67 WEST, 6TH P.M.



NOTES:

PENNINGTON 28N-2HZ TO BE AT 672' FSL, 2317' FEL.
BOTTOM HOLE AT 460' FNL & 2370' FEL.
PENNINGTON 2N-2HZ TO BE AT 672' FSL, 2287' FEL.
BOTTOM HOLE AT 460' FNL & 1840' FEL.
PENNINGTON 27C-2HZ TO BE AT 672' FSL, 2257' FEL.
BOTTOM HOLE AT 460' FNL & 1455' FEL.

LEGEND

⊕ = EXISTING MONUMENT ♦ = BOTTOM HOLE BH= BOTTOM HOLE
• = PROPOSED WELL ◆ = EXISTING WELL

PREPARED BY:

PFS

Petroleum Field Services, LLC
1801 W. 13th Ave.
Denver, CO 80204

KERR-MCGEE OIL & GAS ONSHORE LP

FIELD DATE:
03-15-13

DRAWING DATE:
04-24-13

SURFACE LOCATION:

SW 1/4 SE 1/4, SEC. 2, T2N, R67W, 6TH P.M.
WELD COUNTY, COLORADO

