

Noble Energy

Weld County, CO (NAD 83)

Sec. 14-T6N-R63W (Wells Ranch 16 North PAD)

Wells Ranch State PC USX AA16-69-1HNL

Design: MWD Survey

Sperry Drilling Services

Final Survey Report

15 April, 2013

Well Coordinates: 1,424,072.69 N, 3,302,448.53 E (40° 29' 32.60" N, 104° 24' 45.14" W)

Ground Level: 4,778.00 ft

Local Coordinate Origin: Centered on Well Wells Ranch State PC USX AA16-6

Viewing Datum: KB=24' @ 4802.00ft (H&P 343)

TVDs to System: N

North Reference: Grid

Unit System: API - US Survey Feet - Custom

Geodetic Scale Factor Applied

Version: 2003.16 Build: 431

HALLIBURTON

Design Report for Wells Ranch State PC USX AA16-69-1HNL - MWD Survey

Measured Depth (ft)	Inclination (°)	Azimuth (°)	Vertical Depth (ft)	+N/-S (ft)	+E/-W (ft)	Vertical Section (ft)	Dogleg Rate (°/100ft)
0.00	0.00	0.00	0.00	0.00	0.00	0.00	0.00
677.00	0.00	0.00	677.00	0.00	0.00	0.00	0.00
Surface Casing Assumed Vertical at 677.00ft							
809.00	0.62	74.88	809.00	0.19	0.69	-0.69	0.47
First MWD Survey							
903.00	0.47	84.13	902.99	0.36	1.56	-1.56	0.18
996.00	0.49	89.66	995.99	0.40	2.34	-2.34	0.05
1,088.00	0.62	104.46	1,087.99	0.28	3.22	-3.21	0.21
1,273.00	0.58	111.85	1,272.98	-0.32	5.05	-5.06	0.05
1,365.00	0.47	101.69	1,364.97	-0.57	5.86	-5.86	0.16
1,457.00	0.55	113.44	1,456.97	-0.82	6.63	-6.64	0.14
1,647.00	0.22	348.74	1,646.97	-0.83	7.40	-7.41	0.37
1,742.00	0.19	28.88	1,741.96	-0.51	7.44	-7.44	0.15
1,837.00	0.35	84.07	1,836.96	-0.34	7.80	-7.81	0.30
1,932.00	0.33	47.43	1,931.96	-0.13	8.29	-8.29	0.23
2,027.00	0.36	102.72	2,026.96	-0.01	8.78	-8.78	0.34
2,122.00	0.40	79.37	2,121.96	-0.01	9.40	-9.40	0.17
2,217.00	1.98	330.99	2,216.94	1.48	8.93	-8.91	2.25
2,312.00	3.16	323.77	2,311.84	5.03	6.59	-6.52	1.29
2,407.00	5.31	315.14	2,406.58	10.26	1.94	-1.81	2.35
2,502.00	6.95	307.49	2,501.03	16.87	-5.72	5.93	1.92
2,597.00	9.19	300.93	2,595.09	24.27	-16.79	17.09	2.55
2,692.00	10.92	304.21	2,688.63	33.23	-30.74	31.15	1.92
2,787.00	12.47	302.68	2,781.65	43.83	-46.82	47.36	1.66
2,882.00	12.84	304.22	2,874.35	55.30	-64.18	64.86	0.53
2,977.00	14.04	301.91	2,966.74	67.33	-82.69	83.52	1.38
3,072.00	13.52	300.28	3,059.01	79.02	-102.06	103.04	0.68
3,167.00	13.13	299.79	3,151.45	89.98	-121.02	122.13	0.43
3,262.00	12.84	299.02	3,244.02	100.46	-139.61	140.85	0.36
3,357.00	12.05	301.76	3,336.79	110.81	-157.27	158.64	1.04
3,452.00	11.43	303.90	3,429.80	121.28	-173.52	175.01	0.80
3,547.00	12.01	310.13	3,522.82	132.90	-188.89	190.53	1.46
3,642.00	12.99	304.84	3,615.57	145.37	-205.21	207.00	1.59
3,737.00	13.48	303.34	3,708.05	157.55	-223.22	225.17	0.63
3,832.00	13.64	302.54	3,800.40	169.66	-241.92	244.01	0.26
3,927.00	12.06	300.07	3,893.02	180.66	-259.95	262.18	1.76
4,022.00	10.16	299.44	3,986.24	189.75	-275.84	278.18	2.00
4,117.00	8.23	297.74	4,080.01	197.04	-289.15	291.58	2.05
4,212.00	5.05	297.50	4,174.36	202.13	-298.88	301.37	3.35
4,307.00	3.05	310.26	4,269.12	205.70	-304.52	307.06	2.30
4,402.00	3.00	309.56	4,363.99	208.92	-308.37	310.94	0.07
4,497.00	1.27	317.29	4,458.92	211.27	-311.00	313.60	1.84
4,592.00	1.18	311.45	4,553.90	212.69	-312.45	315.07	0.16
4,687.00	1.14	332.46	4,648.88	214.18	-313.62	316.25	0.45
4,782.00	1.19	345.91	4,743.86	215.97	-314.29	316.95	0.29
4,877.00	0.76	22.34	4,838.85	217.51	-314.29	316.97	0.77
4,972.00	0.56	9.34	4,933.84	218.55	-313.98	316.67	0.26
5,067.00	0.49	14.09	5,028.84	219.41	-313.80	316.51	0.09
5,162.00	0.43	347.94	5,123.83	220.15	-313.78	316.49	0.23
5,257.00	0.40	209.48	5,218.83	220.21	-314.02	316.73	0.82

Design Report for Wells Ranch State PC USX AA16-69-1HNL - MWD Survey

Measured Depth (ft)	Inclination (°)	Azimuth (°)	Vertical Depth (ft)	+N/-S (ft)	+E/-W (ft)	Vertical Section (ft)	Dogleg Rate (°/100ft)
5,352.00	0.57	236.39	5,313.83	219.66	-314.57	317.28	0.29
5,447.00	1.30	236.98	5,408.82	218.81	-315.87	318.57	0.77
5,542.00	1.46	229.22	5,503.79	217.43	-317.69	320.37	0.26
5,637.00	1.06	172.48	5,598.77	215.77	-318.49	321.15	1.31
5,732.00	1.02	108.06	5,693.76	214.64	-317.57	320.22	1.17
5,827.00	0.81	113.42	5,788.74	214.11	-316.15	318.79	0.24
5,922.00	0.07	183.80	5,883.74	213.78	-315.54	318.18	0.83
6,018.00	0.34	0.54	5,979.74	214.01	-315.54	318.18	0.43
6,065.00	1.09	293.39	6,026.74	214.33	-315.95	318.59	2.14
6,113.00	5.20	292.14	6,074.65	215.33	-318.39	321.04	8.56
6,160.00	9.04	281.15	6,121.29	216.85	-323.98	326.66	8.63
6,208.00	12.54	280.80	6,168.43	218.55	-332.81	335.50	7.29
6,255.00	12.82	282.58	6,214.28	220.64	-342.91	345.62	1.02
6,303.00	15.35	275.38	6,260.84	222.40	-354.43	357.17	6.40
6,350.00	18.50	272.81	6,305.80	223.35	-368.08	370.83	6.89
6,398.00	22.25	270.03	6,350.79	223.73	-384.78	387.53	8.07
6,445.00	26.18	269.40	6,393.65	223.62	-404.05	406.80	8.38
6,493.00	29.09	267.61	6,436.17	223.02	-426.30	429.04	6.30
6,540.00	31.80	265.29	6,476.68	221.53	-450.06	452.78	6.28
6,588.00	35.86	264.66	6,516.55	219.18	-476.68	479.37	8.49
6,683.00	42.86	264.13	6,589.95	213.28	-536.60	539.21	7.38
6,730.00	47.00	263.74	6,623.22	209.77	-569.60	572.16	8.83
6,778.00	51.37	263.61	6,654.59	205.77	-605.70	608.21	9.11
6,825.00	56.26	263.60	6,682.33	201.55	-643.38	645.84	10.40
6,873.00	61.35	264.48	6,707.18	197.29	-684.21	686.61	10.72
6,920.00	69.80	268.56	6,726.61	194.75	-726.87	729.24	19.63
6,968.00	79.41	272.49	6,739.34	195.21	-773.08	775.45	21.52
6,996.00	85.96	274.80	6,742.90	196.98	-800.78	803.17	24.78
7,040.00	88.15	274.99	6,745.16	200.73	-844.56	846.99	5.00
Estimated 7" Casing Point: 328' FNL, 605' FEL (Not a Survey Station)							
7,095.00	90.89	275.22	6,745.62	205.62	-899.34	901.82	5.00
7,143.00	90.68	274.38	6,744.96	209.63	-947.16	949.70	1.80
7,239.00	91.17	274.38	6,743.41	216.96	-1,042.87	1,045.49	0.51
7,334.00	90.62	272.49	6,741.93	222.65	-1,137.68	1,140.36	2.07
7,429.00	90.62	271.29	6,740.90	225.79	-1,232.63	1,235.34	1.26
7,501.00	90.80	270.78	6,740.01	227.09	-1,304.61	1,307.33	0.75
7,524.00	90.86	270.51	6,739.68	227.35	-1,327.60	1,330.33	1.20
7,619.00	88.86	269.35	6,739.91	227.23	-1,422.60	1,425.31	2.43
7,713.00	89.07	268.75	6,741.61	225.67	-1,516.57	1,519.26	0.68
7,808.00	89.17	268.41	6,743.07	223.32	-1,611.53	1,614.18	0.37
7,903.00	88.83	268.29	6,744.72	220.58	-1,706.47	1,709.08	0.38
7,998.00	88.58	269.32	6,746.87	218.60	-1,801.43	1,804.01	1.12
8,093.00	90.68	269.31	6,747.48	217.47	-1,896.41	1,898.97	2.21
8,188.00	90.25	268.73	6,746.71	215.84	-1,991.40	1,993.93	0.76
8,283.00	90.06	268.05	6,746.46	213.17	-2,086.36	2,088.85	0.74
8,379.00	89.44	266.62	6,746.88	208.71	-2,182.25	2,184.68	1.62
8,474.00	90.59	270.06	6,746.85	205.96	-2,277.19	2,279.58	3.82
8,569.00	90.22	269.03	6,746.18	205.20	-2,372.19	2,374.55	1.15
8,664.00	89.26	269.79	6,746.61	204.23	-2,467.18	2,469.53	1.29
8,758.00	90.65	272.11	6,746.68	205.78	-2,561.16	2,563.52	2.88
8,853.00	90.15	271.62	6,746.02	208.88	-2,656.10	2,658.50	0.74

Design Report for Wells Ranch State PC USX AA16-69-1HNL - MWD Survey

Measured Depth (ft)	Inclination (°)	Azimuth (°)	Vertical Depth (ft)	+N/-S (ft)	+E/-W (ft)	Vertical Section (ft)	Dogleg Rate (°/100ft)
8,948.00	90.37	272.16	6,745.59	212.01	-2,751.05	2,753.47	0.61
9,043.00	90.59	274.31	6,744.79	217.37	-2,845.89	2,848.37	2.27
9,138.00	90.74	272.59	6,743.69	223.09	-2,940.71	2,943.25	1.82
9,233.00	89.29	269.74	6,743.67	225.02	-3,035.68	3,038.24	3.37
9,328.00	90.59	269.45	6,743.77	224.35	-3,130.67	3,133.22	1.40
9,423.00	91.63	267.76	6,741.93	222.03	-3,225.62	3,228.13	2.09
9,518.00	88.80	265.76	6,741.57	216.66	-3,320.45	3,322.89	3.65
9,613.00	87.44	264.91	6,744.69	208.94	-3,415.09	3,417.42	1.69
9,708.00	88.24	267.02	6,748.27	202.26	-3,509.78	3,512.02	2.37
9,803.00	87.28	268.52	6,751.98	198.57	-3,604.63	3,606.82	1.87
9,898.00	89.69	268.89	6,754.49	196.42	-3,699.56	3,701.72	2.57
9,993.00	90.43	268.92	6,754.39	194.61	-3,794.55	3,796.67	0.78
10,088.00	89.88	267.55	6,754.13	191.68	-3,889.50	3,891.58	1.55
10,183.00	90.80	269.59	6,753.57	189.31	-3,984.46	3,986.51	2.36
10,278.00	90.28	269.06	6,752.68	188.19	-4,079.45	4,081.47	0.78
10,373.00	90.46	268.94	6,752.06	186.54	-4,174.43	4,176.43	0.23
10,467.00	90.77	268.44	6,751.05	184.39	-4,268.40	4,270.36	0.63
10,560.00	90.46	270.33	6,750.05	183.39	-4,361.39	4,363.33	2.06
10,654.00	89.38	270.48	6,750.19	184.05	-4,455.38	4,457.33	1.16
10,748.00	90.40	271.56	6,750.37	185.73	-4,549.37	4,551.32	1.58
10,841.00	91.05	271.48	6,749.19	188.19	-4,642.32	4,644.31	0.70
10,935.00	91.20	271.07	6,747.34	190.28	-4,736.28	4,738.28	0.46
11,027.00	90.68	270.51	6,745.83	191.55	-4,828.26	4,830.27	0.83
11,119.00	89.60	267.63	6,745.61	190.06	-4,920.24	4,922.22	3.34
11,212.00	89.69	266.59	6,746.19	185.37	-5,013.12	5,015.03	1.12
11,306.00	89.32	266.90	6,747.00	180.03	-5,106.96	5,108.80	0.51
11,400.00	88.61	269.36	6,748.70	176.97	-5,200.89	5,202.69	2.72
11,493.00	90.22	270.12	6,749.65	176.54	-5,293.88	5,295.66	1.91
11,585.00	89.69	268.63	6,749.72	175.54	-5,385.87	5,387.64	1.72
11,678.00	90.34	269.72	6,749.69	174.20	-5,478.86	5,480.60	1.36
11,769.00	90.86	270.15	6,748.74	174.10	-5,569.85	5,571.59	0.74
11,862.00	90.65	269.64	6,747.52	173.93	-5,662.84	5,664.57	0.59
11,956.00	90.34	268.66	6,746.70	172.53	-5,756.83	5,758.53	1.09
12,051.00	90.74	268.58	6,745.81	170.25	-5,851.80	5,853.46	0.43
12,146.00	90.71	267.97	6,744.61	167.39	-5,946.75	5,948.37	0.64
12,241.00	87.72	267.91	6,745.91	163.97	-6,041.66	6,043.24	3.15
12,330.00	87.41	269.22	6,749.69	161.75	-6,130.55	6,132.09	1.51
12,425.00	89.11	269.84	6,752.57	160.97	-6,225.50	6,227.02	1.90
12,520.00	90.31	269.37	6,753.05	160.31	-6,320.50	6,322.00	1.36
12,615.00	90.74	268.02	6,752.18	158.15	-6,415.47	6,416.94	1.49
12,710.00	91.23	268.53	6,750.55	155.29	-6,510.41	6,511.84	0.74
12,805.00	90.06	269.93	6,749.48	154.01	-6,605.39	6,606.80	1.92
12,900.00	89.57	270.43	6,749.79	154.31	-6,700.39	6,701.79	0.74
12,995.00	87.81	268.71	6,751.96	153.60	-6,795.35	6,796.74	2.59
13,090.00	90.40	270.14	6,753.44	152.65	-6,890.33	6,891.69	3.11
13,185.00	91.33	269.50	6,752.01	152.35	-6,985.31	6,986.67	1.19
13,280.00	91.85	268.40	6,749.37	150.61	-7,080.26	7,081.59	1.28
13,375.00	91.17	269.70	6,746.87	149.03	-7,175.21	7,176.51	1.54
13,470.00	90.49	271.36	6,745.49	149.91	-7,270.19	7,271.50	1.89
13,565.00	91.29	270.76	6,744.02	151.67	-7,365.16	7,366.48	1.05
13,660.00	92.50	270.66	6,740.88	152.85	-7,460.10	7,461.43	1.28

Design Report for Wells Ranch State PC USX AA16-69-1HNL - MWD Survey

Measured Depth (ft)	Inclination (°)	Azimuth (°)	Vertical Depth (ft)	+N/-S (ft)	+E/-W (ft)	Vertical Section (ft)	Dogleg Rate (°/100ft)
13,755.00	90.68	269.25	6,738.24	152.77	-7,555.06	7,556.38	2.42
13,850.00	89.32	269.53	6,738.24	151.76	-7,650.05	7,651.35	1.46
13,945.00	90.80	271.01	6,738.14	152.21	-7,745.05	7,746.34	2.20
14,040.00	90.46	268.76	6,737.10	152.02	-7,840.03	7,841.32	2.40
14,135.00	90.25	270.55	6,736.51	151.44	-7,935.03	7,936.30	1.90
14,230.00	90.25	272.36	6,736.09	153.86	-8,029.99	8,031.28	1.91
14,325.00	90.46	273.85	6,735.50	159.00	-8,124.85	8,126.20	1.58
14,420.00	90.62	273.85	6,734.61	165.38	-8,219.63	8,221.05	0.17
14,515.00	89.32	270.97	6,734.66	169.37	-8,314.53	8,316.00	3.33
14,610.00	89.45	269.90	6,735.68	170.10	-8,409.52	8,410.99	1.13
14,705.00	91.05	269.51	6,735.26	169.61	-8,504.52	8,505.97	1.73
14,800.00	90.31	269.73	6,734.14	168.98	-8,599.51	8,600.94	0.81
14,895.00	90.06	268.71	6,733.83	167.68	-8,694.50	8,695.91	1.11
14,990.00	89.69	268.66	6,734.04	165.50	-8,789.47	8,790.85	0.39
15,085.00	90.31	269.10	6,734.04	163.65	-8,884.45	8,885.80	0.80
15,180.00	90.12	267.39	6,733.68	160.74	-8,979.40	8,980.71	1.81
15,275.00	89.26	265.21	6,734.20	154.61	-9,074.20	9,075.42	2.47
15,371.00	88.77	266.82	6,735.85	147.94	-9,169.95	9,171.08	1.75
15,466.00	89.54	266.59	6,737.25	142.48	-9,264.78	9,265.84	0.85
15,561.00	88.43	262.97	6,738.93	133.84	-9,359.35	9,360.30	3.99
15,656.00	86.23	261.74	6,743.36	121.21	-9,453.40	9,454.18	2.65
15,751.00	87.38	264.31	6,748.65	109.70	-9,547.54	9,548.17	2.96
15,846.00	88.70	264.89	6,751.90	100.76	-9,642.06	9,642.57	1.52
15,941.00	89.75	263.40	6,753.18	91.07	-9,736.55	9,736.93	1.92
16,036.00	90.15	263.56	6,753.27	80.29	-9,830.94	9,831.18	0.45
16,131.00	91.48	263.90	6,751.92	69.91	-9,925.36	9,925.46	1.45
16,226.00	92.44	263.61	6,748.67	59.59	-10,019.74	10,019.71	1.06
16,246.00	92.81	263.32	6,747.75	57.31	-10,039.59	10,039.52	2.35
Final MWD Survey							
16,315.00	92.81	263.32	6,744.37	49.29	-10,108.04	10,107.87	0.00
Survey Projection to TD - Estimated BHL: 406' FNL, 543' FWL							

Design Annotations

Measured Depth (ft)	Vertical Depth (ft)	Local Coordinates		Comment
		+N/-S (ft)	+E/-W (ft)	
677.00	677.00	0.00	0.00	Surface Casing Assumed Vertical at 677.00ft
809.00	809.00	0.19	0.69	First MWD Survey
7,040.00	6,745.16	200.73	-844.56	Estimated 7" Casing Point: 328' FNL, 605' FEL (Not a Survey Station)
16,246.00	6,747.75	57.31	-10,039.59	Final MWD Survey
16,315.00	6,744.37	49.29	-10,108.04	Survey Projection to TD
16,315.00	6,744.37	49.29	-10,108.04	Estimated BHL: 406' FNL, 543' FWL

Vertical Section Information

Angle Type	Target	Azimuth (°)	Origin Type	Origin		Start TVD (ft)
				+N/-S (ft)	+E/-W (ft)	
Target	Wells Ranch AA16-69-1HNL_PlanD - Rev0_ BHL Tgt	270.71	Slot	0.00	0.00	0.00

Design Report for Wells Ranch State PC USX AA16-69-1HNL - MWD Survey

Survey tool program

From (ft)	To (ft)	Survey/Plan	Survey Tool
677.00	7,040.00	Sperry MWD Surveys	MWD
7,040.00	16,315.00	Sperry MWD Surveys	MWD

Casing Details

Measured Depth (ft)	Vertical Depth (ft)	Name	Casing Diameter (")	Hole Diameter (")
7,040.00	6,745.16	7" Csg	7	8-3/4

Design Report for Wells Ranch State PC USX AA16-69-1HNL - MWD Survey

Targets

Target Name - hit/miss target - Shape	Dip Angle (°)	Dip Dir. (°)	TVD (ft)	+N/-S (ft)	+E/-W (ft)	Northing (ft)	Easting (ft)	Latitude	Longitude
Wells Ranch	0.00	0.00	6,745.00	125.77	-10,115.38	1,424,198.46	3,292,333.49	40.493070	-104.448900
- actual wellpath misses target center by 76.82ft at 16313.37ft MD (6744.45 TVD, 49.48 N, -10106.42 E)									
- Point									
Wells Ranch USX	0.00	0.00	1.00	-1,351.62	8.23	1,422,721.12	3,302,456.76	40.488680	-104.412570
- actual wellpath misses target center by 1351.64ft at 1.00ft MD (1.00 TVD, 0.00 N, 0.00 E)									
- Polygon									
Point 1				-5,560.77	479.38	1,424,552.06	3,296,887.95		
Point 2				-5,554.77	-4,825.62	1,419,247.24	3,296,893.95		
Point 3				-10,782.77	-4,847.62	1,419,225.24	3,291,666.13		
Point 4				-10,636.77	454.38	1,424,527.06	3,291,812.13		
Point 5				-5,560.77	479.38	1,424,552.06	3,296,887.95		
Wells Ranch USX	0.00	0.00	1.00	-1,351.62	8.23	1,422,721.12	3,302,456.76	40.488680	-104.412570
- actual wellpath misses target center by 1351.64ft at 1.00ft MD (1.00 TVD, 0.00 N, 0.00 E)									
- Polygon									
Point 1				-242.77	536.38	1,424,609.06	3,302,205.77		
Point 2				5,094.23	595.38	1,424,668.05	3,307,542.59		
Point 3				5,121.23	-4,709.62	1,419,363.24	3,307,569.59		
Point 4				-208.77	-4,764.62	1,419,308.24	3,302,239.77		
Point 5				-242.77	536.38	1,424,609.06	3,302,205.77		
Wells Ranch USX	0.00	0.00	1.00	-1,351.62	8.23	1,422,721.12	3,302,456.76	40.488680	-104.412570
- actual wellpath misses target center by 1351.64ft at 1.00ft MD (1.00 TVD, 0.00 N, 0.00 E)									
- Polygon									
Point 1				-702.77	75.38	1,424,148.07	3,301,745.79		
Point 2				-668.77	-4,304.62	1,419,768.22	3,301,779.78		
Point 3				-5,094.77	-4,365.62	1,419,707.22	3,297,353.94		
Point 4				-5,100.77	19.38	1,424,092.07	3,297,347.94		
Point 5				-702.77	75.38	1,424,148.07	3,301,745.79		
Wells Ranch USX	0.00	0.00	1.00	-1,351.62	8.23	1,422,721.12	3,302,456.76	40.488680	-104.412570
- actual wellpath misses target center by 1351.64ft at 1.00ft MD (1.00 TVD, 0.00 N, 0.00 E)									
- Polygon									
Point 1				-6,020.77	19.38	1,424,092.07	3,296,427.97		
Point 2				-6,014.77	-4,365.62	1,419,707.22	3,296,433.97		
Point 3				-10,322.77	-4,387.62	1,419,685.22	3,292,126.12		
Point 4				-10,176.77	-5.62	1,424,067.07	3,292,272.11		
Point 5				-6,020.77	19.38	1,424,092.07	3,296,427.97		
Wells Ranch USX	0.00	0.00	1.00	-1,351.62	8.23	1,422,721.12	3,302,456.76	40.488680	-104.412570
- actual wellpath misses target center by 1351.64ft at 1.00ft MD (1.00 TVD, 0.00 N, 0.00 E)									
- Polygon									
Point 1				217.23	76.38	1,424,149.07	3,302,665.75		
Point 2				4,634.23	135.38	1,424,208.07	3,307,082.60		
Point 3				4,661.23	-4,249.62	1,419,823.22	3,307,109.60		
Point 4				251.23	-4,304.62	1,419,768.22	3,302,699.75		
Point 5				217.23	76.38	1,424,149.07	3,302,665.75		
Wells Ranch USX	0.00	0.00	1.00	-1,351.62	8.23	1,422,721.12	3,302,456.76	40.488680	-104.412570
- actual wellpath misses target center by 1351.64ft at 1.00ft MD (1.00 TVD, 0.00 N, 0.00 E)									
- Polygon									
Point 1				-242.77	535.38	1,424,608.06	3,302,205.77		
Point 2				-208.77	-4,764.62	1,419,308.24	3,302,239.77		
Point 3				-5,554.77	-4,825.62	1,419,247.24	3,296,893.95		
Point 4				-5,560.77	479.38	1,424,552.06	3,296,887.95		
Point 5				-242.77	535.38	1,424,608.06	3,302,205.77		

North Reference Sheet for Sec. 14-T6N-R63W (Wells Ranch 16 North PAD) - Wells Ranch State PC USX AA16-69-1HNL

All data is in US Feet unless otherwise stated. Directions and Coordinates are relative to Grid North Reference.

Vertical Depths are relative to KB=24' @ 4802.00ft (H&P 343). Northing and Easting are relative to Wells Ranch State PC USX AA16-69-1HNL - Slot A2

Coordinate System is US State Plane 1983, Colorado Northern Zone using datum North American Datum 1983, ellipsoid GRS 1980

Projection method is Lambert Conformal Conic (2 parallel)

Central Meridian is -105.500000°, Longitude Origin:0.000000°, Latitude Origin:40.783333°

False Easting: 3,000,000.00ft, False Northing: 1,000,000.00ft, Scale Reduction: 0.99996572

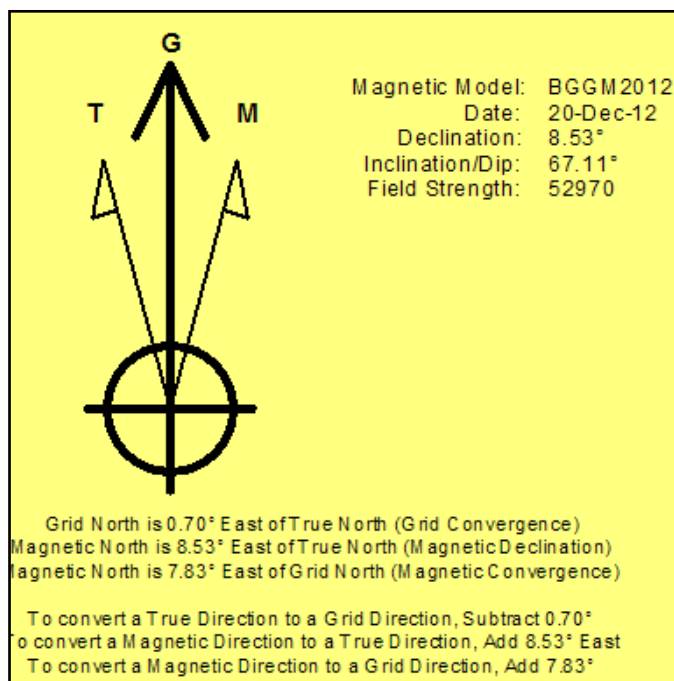
Grid Coordinates of Well: 1,424,072.69 ft N, 3,302,448.53 ft E

Geographical Coordinates of Well: 40° 29' 32.60" N, 104° 24' 45.14" W

Grid Convergence at Surface is: 0.70°

Based upon Minimum Curvature type calculations, at a Measured Depth of 16,315.00ft
the Bottom Hole Displacement is 10,108.16ft in the Direction of 270.28° (Grid).

Magnetic Convergence at surface is: -7.83° (20 December 2012, , BGGM2012)

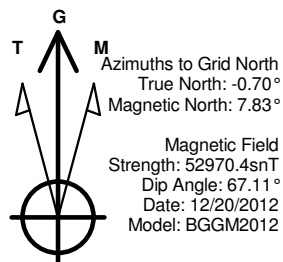


Project: Weld County, CO (NAD 83)
 Site: Sec. 14-T6N-R63W (Wells Ranch 16 North PAD)
 Well: Wells Ranch State PC USX AA16-69-1HNL

Noble Energy

HALLIBURTON

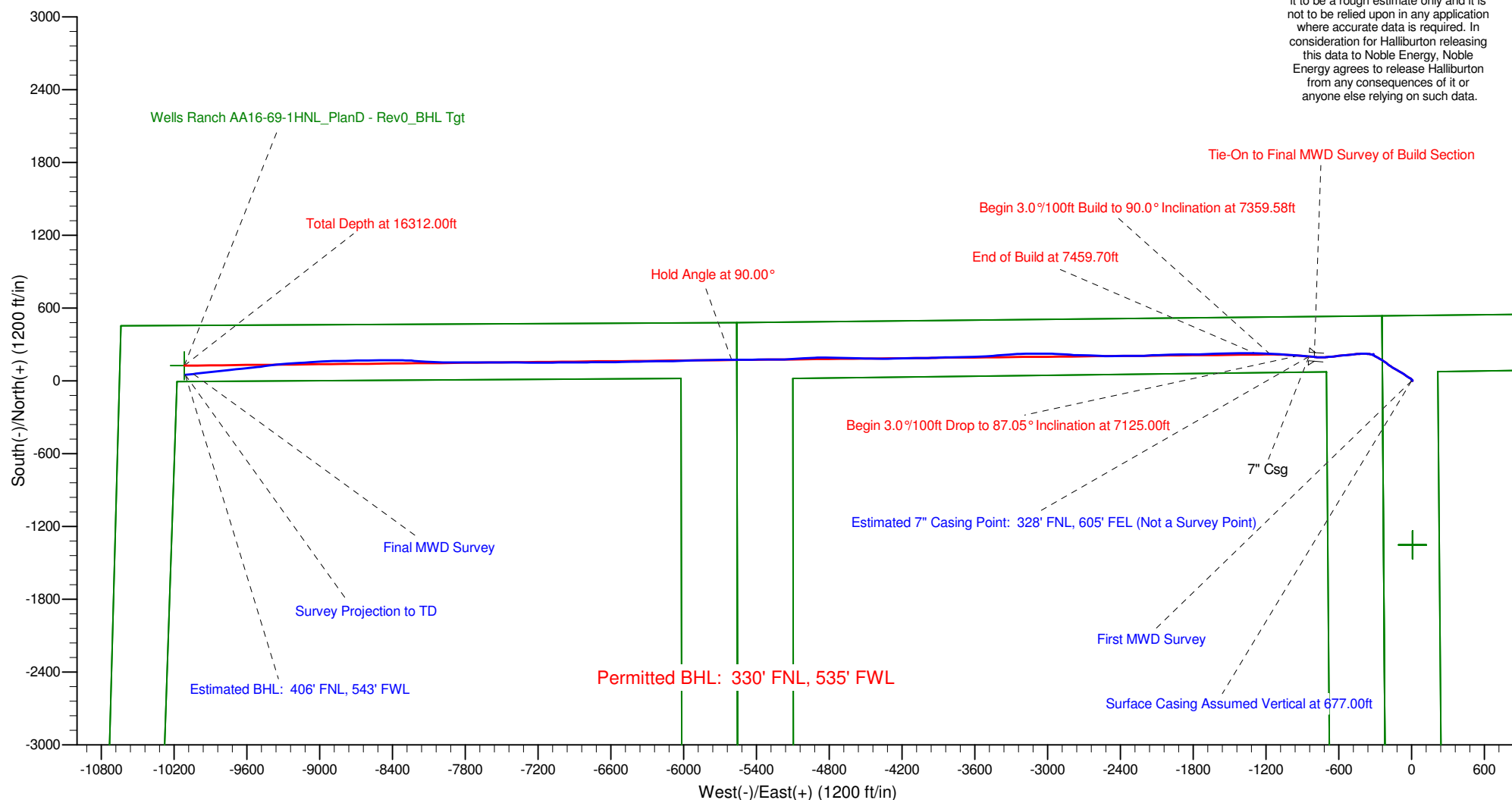
Sperry Drilling



LEGEND

- Wells Ranch State PC USX AA16-69-1HNL, Plan D, Plan D - Rev 0 Proposal V0
- MWD Survey

Halliburton Energy Services, Inc. ("Halliburton") recently completed directional drilling and MWD operations at the Wells Ranch State PC USX AA16-69-1HNL well located at Weld County, CO. At the conclusion of the job Halliburton performed a final survey on the well. Noble Energy has requested that Halliburton provide them the distances from BHL to section lines from that final survey to allow Noble Energy to meet its requirements under Colorado law. These distances are generated by a mathematical algorithm based on rough data collected after the well is drilled. Halliburton considers it to be a rough estimate only and it is not to be relied upon in any application where accurate data is required. In consideration for Halliburton releasing this data to Noble Energy, Noble Energy agrees to release Halliburton from any consequences of it or anyone else relying on such data.

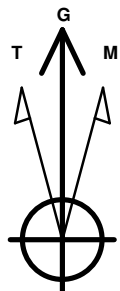


Project: Weld County, CO (NAD 83)
Site: Sec. 14-T6N-R63W (Wells Ranch 16 North PAD)
Well: Wells Ranch State PC USX AA16-69-1HNL

Noble Energy

HALLIBURTON

Sperry Drilling



Azimuths to Grid North
True North: -0.70°
Magnetic North: 7.83°

Magnetic Field
Strength: 52970.4snT
Dip Angle: 67.11°
Date: 12/20/2012
Model: BGGM2012

LEGEND

- Wells Ranch State PC USX AA16-69-1HNL, Plan D, Plan D - Rev 0 Proposal V0
- MWD Survey

Halliburton Energy Services, Inc. ("Halliburton") recently completed directional drilling and MWD operations at the Wells Ranch State PC USX AA16-69-1HNL well located at Weld County, CO. At the conclusion of the job Halliburton performed a final survey on the well. Noble Energy has requested that Halliburton provide them the distances from BHL to section lines from that final survey to allow Noble Energy to meet its requirements under Colorado law. These distances are generated by a mathematical algorithm based on rough data collected after the well is drilled. Halliburton considers it to be a rough estimate only and it is not to be relied upon in any application where accurate data is required. In consideration for Halliburton releasing this data to Noble Energy, Noble Energy agrees to release Halliburton from any consequences of it or anyone else relying on such data.

