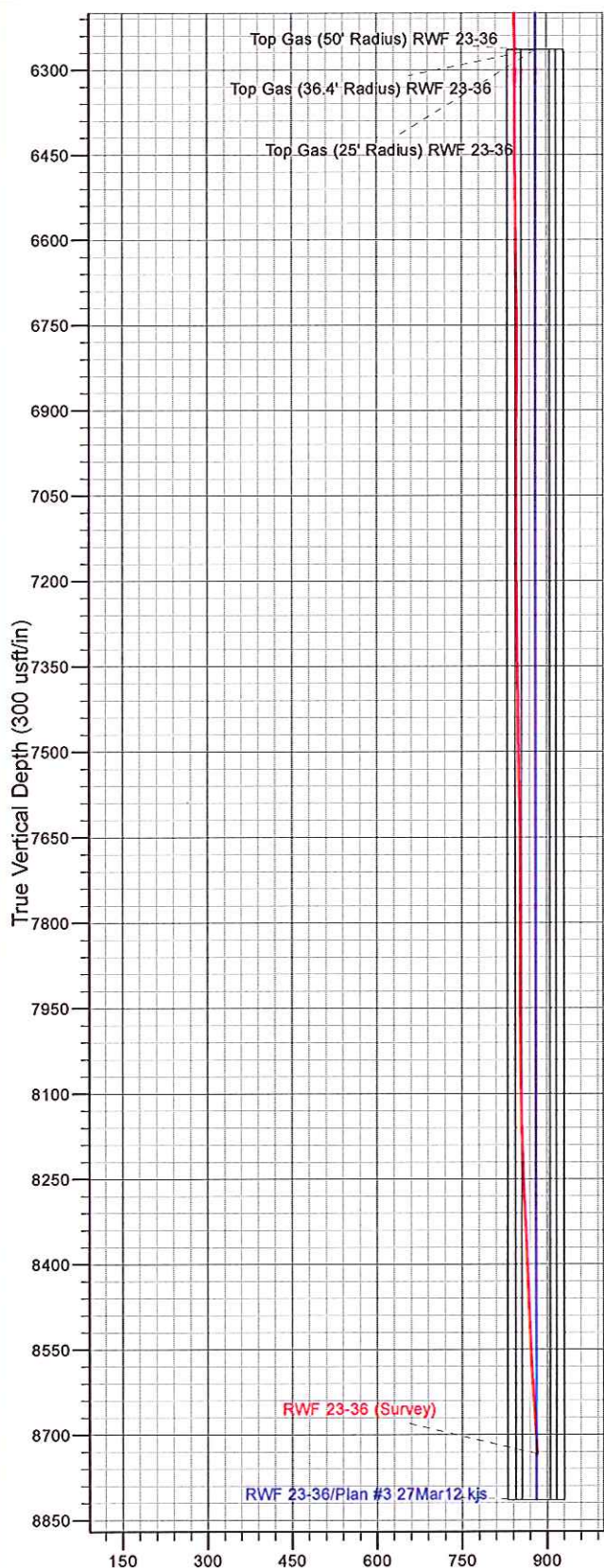




Well Name: RWF 23-36
Surface Location: RWF 33-36 Pad - west
North American Datum 1983 , US State Plane 1983 . Colorado Central Zone
Ground Elevation: 6528.00

+N/-S	+E/-W	Northing	Easting	Latitude	Longitude	Slot
0.00	0.00	1609049.70	2340547.40	39.48233	-107.83663	A10

KELLY BUSHING @ 6554.00usft (SSD 576 (26' RKB) jjb)



Vertical Section at 206.15° (300 usft/in)

