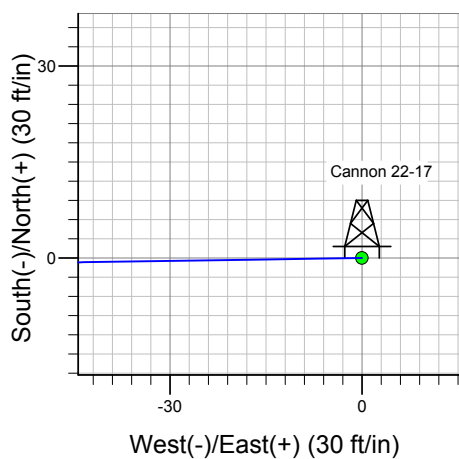
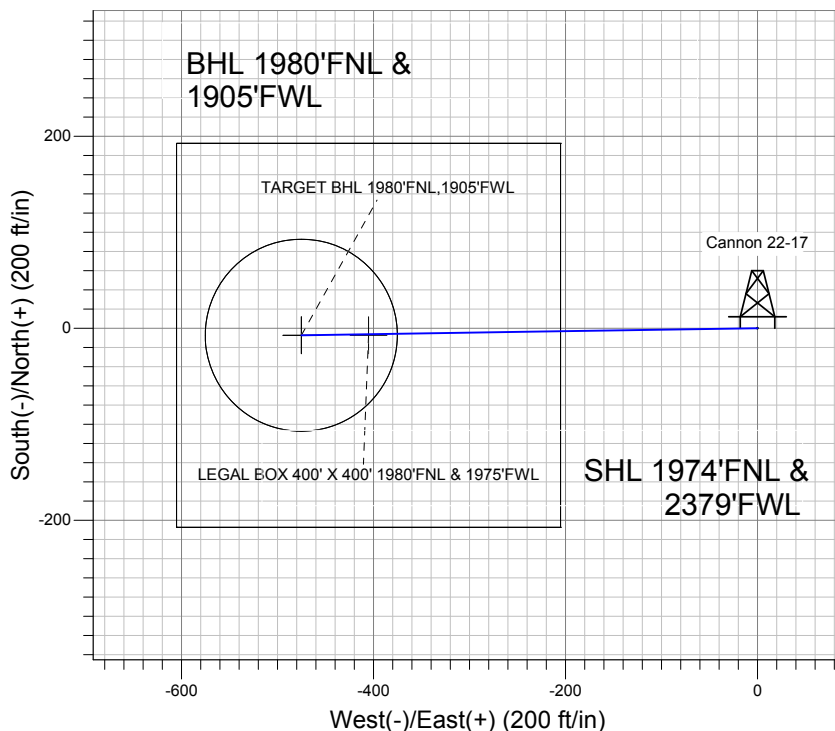
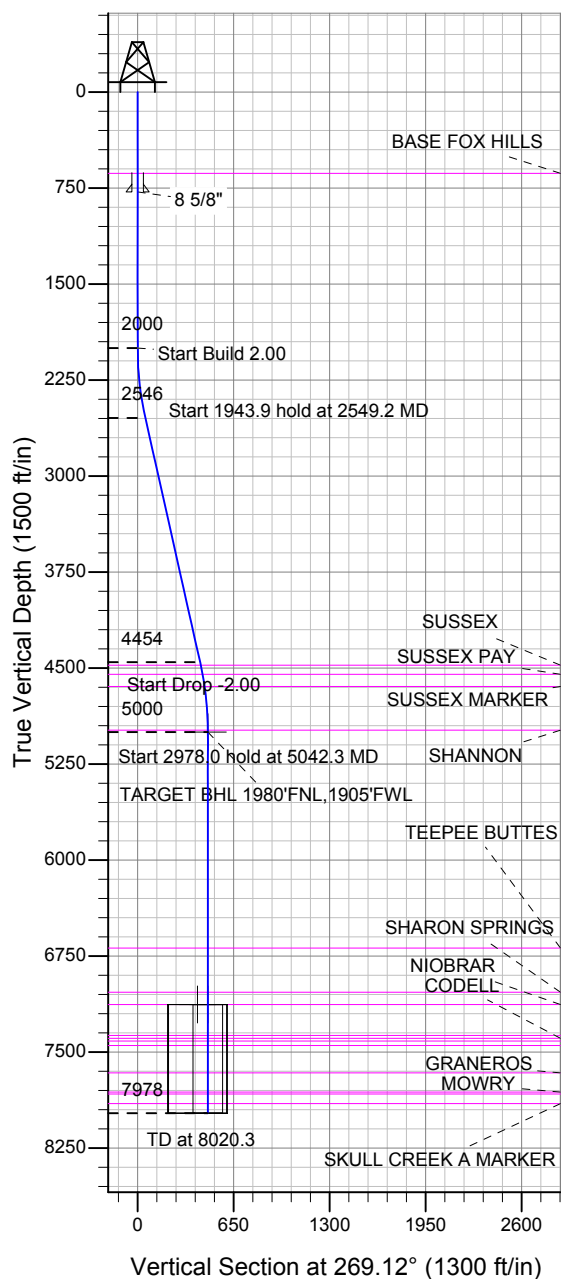


EnCana Oil & Gas Weld County CO



Cannon 22-17
 Plan #1 (05-02-13)
 9:57, May 10 2013



Azimuths to True North
 Magnetic North: 8.61°

Magnetic Field
 Strength: 52790.3snT
 Dip Angle: 66.77°
 Date: 5/9/2013
 Model: IGRF2010

WELLBORE TARGET DETAILS (LAT/LONG)

Name	TVD	+N/-S	+E/-W	Latitude	Longitude	Shape
TARGET BHL 1980'FNL,1905'FWL	5000.0	-7.3	-475.3	40.139910	-104.803750	Point
LEGAL BOX 400' X 400' 1980'FNL & 1975'FWL	7128.0	-7.3	-405.3	40.139910	-104.803500	Rectangle (Sides: L400.0 W400.0)
TARGET CIRCLE 1980'FNL,1905'FWL	7128.0	-7.3	-475.3	40.139910	-104.803750	Circle (Radius: 100.0)

SECTION DETAILS

Sec	MD	Inc	Azi	TVD	+N/-S	+E/-W	DLeg	TFace	VSec	Target
1	0.0	0.00	0.00	0.0	0.0	0.0	0.00	0.00	0.0	
2	2000.0	0.00	0.00	2000.0	0.0	0.0	0.00	0.00	0.0	
3	2549.2	10.98	269.12	2545.9	-0.8	-52.5	2.00	269.12	52.5	
4	4493.1	10.98	269.12	4454.1	-6.5	-422.8	0.00	0.00	422.9	
5	5042.3	0.00	0.00	5000.0	-7.3	-475.3	2.00	180.00	475.4	TARGET BHL 1980'FNL,1905'FWL
6	8020.3	0.00	0.00	7978.0	-7.3	-475.3	0.00	0.00	475.4	



Directional

EnCana Oil & Gas Weld County CO

SEC.17-T2N-R66W

Cannon 0-2-17 Pad Sec.17-T2N-R66W

Cannon 22-17

Wellbore #1

Plan: Plan #1 (05-02-13)

Standard Planning Report

10 May, 2013

Plan Sections										
Measured Depth (ft)	Inclination (°)	Azimuth (°)	Vertical Depth (ft)	+N/-S (ft)	+E/-W (ft)	Dogleg Rate (°/100ft)	Build Rate (°/100ft)	Turn Rate (°/100ft)	TFO (°)	Target
0.0	0.00	0.00	0.0	0.0	0.0	0.00	0.00	0.00	0.00	
2,000.0	0.00	0.00	2,000.0	0.0	0.0	0.00	0.00	0.00	0.00	
2,549.2	10.98	269.12	2,545.9	-0.8	-52.5	2.00	2.00	0.00	269.12	
4,493.1	10.98	269.12	4,454.1	-6.5	-422.8	0.00	0.00	0.00	0.00	
5,042.3	0.00	0.00	5,000.0	-7.3	-475.3	2.00	-2.00	0.00	180.00	TARGET BHL 1980
8,020.3	0.00	0.00	7,978.0	-7.3	-475.3	0.00	0.00	0.00	0.00	

Database:	Landmark	Local Co-ordinate Reference:	Well Cannon 22-17
Company:	EnCana Oil & Gas Weld County CO	TVD Reference:	WELL @ 4888.0ft (Original Well Elev)
Project:	SEC.17-T2N-R66W	MD Reference:	WELL @ 4888.0ft (Original Well Elev)
Site:	Cannon 0-2-17 Pad Sec.17-T2N-R66W	North Reference:	True
Well:	Cannon 22-17	Survey Calculation Method:	Minimum Curvature
Wellbore:	Wellbore #1		
Design:	Plan #1 (05-02-13)		

Planned Survey									
Measured Depth (ft)	Inclination (°)	Azimuth (°)	Vertical Depth (ft)	+N/-S (ft)	+E/-W (ft)	Vertical Section (ft)	Dogleg Rate (°/100ft)	Build Rate (°/100ft)	Turn Rate (°/100ft)
0.0	0.00	0.00	0.0	0.0	0.0	0.0	0.00	0.00	0.00
40.0	0.00	0.00	40.0	0.0	0.0	0.0	0.00	0.00	0.00
80.0	0.00	0.00	80.0	0.0	0.0	0.0	0.00	0.00	0.00
120.0	0.00	0.00	120.0	0.0	0.0	0.0	0.00	0.00	0.00
160.0	0.00	0.00	160.0	0.0	0.0	0.0	0.00	0.00	0.00
200.0	0.00	0.00	200.0	0.0	0.0	0.0	0.00	0.00	0.00
240.0	0.00	0.00	240.0	0.0	0.0	0.0	0.00	0.00	0.00
280.0	0.00	0.00	280.0	0.0	0.0	0.0	0.00	0.00	0.00
320.0	0.00	0.00	320.0	0.0	0.0	0.0	0.00	0.00	0.00
360.0	0.00	0.00	360.0	0.0	0.0	0.0	0.00	0.00	0.00
400.0	0.00	0.00	400.0	0.0	0.0	0.0	0.00	0.00	0.00
440.0	0.00	0.00	440.0	0.0	0.0	0.0	0.00	0.00	0.00
480.0	0.00	0.00	480.0	0.0	0.0	0.0	0.00	0.00	0.00
520.0	0.00	0.00	520.0	0.0	0.0	0.0	0.00	0.00	0.00
560.0	0.00	0.00	560.0	0.0	0.0	0.0	0.00	0.00	0.00
600.0	0.00	0.00	600.0	0.0	0.0	0.0	0.00	0.00	0.00
635.0	0.00	0.00	635.0	0.0	0.0	0.0	0.00	0.00	0.00
BASE FOX HILLS									
640.0	0.00	0.00	640.0	0.0	0.0	0.0	0.00	0.00	0.00
680.0	0.00	0.00	680.0	0.0	0.0	0.0	0.00	0.00	0.00
720.0	0.00	0.00	720.0	0.0	0.0	0.0	0.00	0.00	0.00
760.0	0.00	0.00	760.0	0.0	0.0	0.0	0.00	0.00	0.00
780.0	0.00	0.00	780.0	0.0	0.0	0.0	0.00	0.00	0.00
8 5/8"									
800.0	0.00	0.00	800.0	0.0	0.0	0.0	0.00	0.00	0.00
840.0	0.00	0.00	840.0	0.0	0.0	0.0	0.00	0.00	0.00
880.0	0.00	0.00	880.0	0.0	0.0	0.0	0.00	0.00	0.00
920.0	0.00	0.00	920.0	0.0	0.0	0.0	0.00	0.00	0.00
960.0	0.00	0.00	960.0	0.0	0.0	0.0	0.00	0.00	0.00
1,000.0	0.00	0.00	1,000.0	0.0	0.0	0.0	0.00	0.00	0.00
1,040.0	0.00	0.00	1,040.0	0.0	0.0	0.0	0.00	0.00	0.00
1,080.0	0.00	0.00	1,080.0	0.0	0.0	0.0	0.00	0.00	0.00
1,120.0	0.00	0.00	1,120.0	0.0	0.0	0.0	0.00	0.00	0.00
1,160.0	0.00	0.00	1,160.0	0.0	0.0	0.0	0.00	0.00	0.00
1,200.0	0.00	0.00	1,200.0	0.0	0.0	0.0	0.00	0.00	0.00
1,240.0	0.00	0.00	1,240.0	0.0	0.0	0.0	0.00	0.00	0.00
1,280.0	0.00	0.00	1,280.0	0.0	0.0	0.0	0.00	0.00	0.00
1,320.0	0.00	0.00	1,320.0	0.0	0.0	0.0	0.00	0.00	0.00
1,360.0	0.00	0.00	1,360.0	0.0	0.0	0.0	0.00	0.00	0.00
1,400.0	0.00	0.00	1,400.0	0.0	0.0	0.0	0.00	0.00	0.00
1,440.0	0.00	0.00	1,440.0	0.0	0.0	0.0	0.00	0.00	0.00
1,480.0	0.00	0.00	1,480.0	0.0	0.0	0.0	0.00	0.00	0.00
1,520.0	0.00	0.00	1,520.0	0.0	0.0	0.0	0.00	0.00	0.00
1,560.0	0.00	0.00	1,560.0	0.0	0.0	0.0	0.00	0.00	0.00
1,600.0	0.00	0.00	1,600.0	0.0	0.0	0.0	0.00	0.00	0.00
1,640.0	0.00	0.00	1,640.0	0.0	0.0	0.0	0.00	0.00	0.00
1,680.0	0.00	0.00	1,680.0	0.0	0.0	0.0	0.00	0.00	0.00
1,720.0	0.00	0.00	1,720.0	0.0	0.0	0.0	0.00	0.00	0.00
1,760.0	0.00	0.00	1,760.0	0.0	0.0	0.0	0.00	0.00	0.00
1,800.0	0.00	0.00	1,800.0	0.0	0.0	0.0	0.00	0.00	0.00
1,840.0	0.00	0.00	1,840.0	0.0	0.0	0.0	0.00	0.00	0.00
1,880.0	0.00	0.00	1,880.0	0.0	0.0	0.0	0.00	0.00	0.00
1,920.0	0.00	0.00	1,920.0	0.0	0.0	0.0	0.00	0.00	0.00
1,960.0	0.00	0.00	1,960.0	0.0	0.0	0.0	0.00	0.00	0.00

Database:	Landmark	Local Co-ordinate Reference:	Well Cannon 22-17
Company:	EnCana Oil & Gas Weld County CO	TVD Reference:	WELL @ 4888.0ft (Original Well Elev)
Project:	SEC.17-T2N-R66W	MD Reference:	WELL @ 4888.0ft (Original Well Elev)
Site:	Cannon 0-2-17 Pad Sec.17-T2N-R66W	North Reference:	True
Well:	Cannon 22-17	Survey Calculation Method:	Minimum Curvature
Wellbore:	Wellbore #1		
Design:	Plan #1 (05-02-13)		

Planned Survey									
Measured Depth (ft)	Inclination (°)	Azimuth (°)	Vertical Depth (ft)	+N/-S (ft)	+E/-W (ft)	Vertical Section (ft)	Dogleg Rate (°/100ft)	Build Rate (°/100ft)	Turn Rate (°/100ft)
2,000.0	0.00	0.00	2,000.0	0.0	0.0	0.0	0.00	0.00	0.00
2,040.0	0.80	269.12	2,040.0	0.0	-0.3	0.3	2.00	2.00	0.00
2,080.0	1.60	269.12	2,080.0	0.0	-1.1	1.1	2.00	2.00	0.00
2,120.0	2.40	269.12	2,120.0	0.0	-2.5	2.5	2.00	2.00	0.00
2,160.0	3.20	269.12	2,159.9	-0.1	-4.5	4.5	2.00	2.00	0.00
2,200.0	4.00	269.12	2,199.8	-0.1	-7.0	7.0	2.00	2.00	0.00
2,240.0	4.80	269.12	2,239.7	-0.2	-10.0	10.0	2.00	2.00	0.00
2,280.0	5.60	269.12	2,279.6	-0.2	-13.7	13.7	2.00	2.00	0.00
2,320.0	6.40	269.12	2,319.3	-0.3	-17.9	17.9	2.00	2.00	0.00
2,360.0	7.20	269.12	2,359.1	-0.3	-22.6	22.6	2.00	2.00	0.00
2,400.0	8.00	269.12	2,398.7	-0.4	-27.9	27.9	2.00	2.00	0.00
2,440.0	8.80	269.12	2,438.3	-0.5	-33.7	33.7	2.00	2.00	0.00
2,480.0	9.60	269.12	2,477.8	-0.6	-40.1	40.1	2.00	2.00	0.00
2,520.0	10.40	269.12	2,517.1	-0.7	-47.1	47.1	2.00	2.00	0.00
2,549.2	10.98	269.12	2,545.9	-0.8	-52.5	52.5	2.00	2.00	0.00
2,560.0	10.98	269.12	2,556.4	-0.8	-54.5	54.5	0.00	0.00	0.00
2,600.0	10.98	269.12	2,595.7	-1.0	-62.2	62.2	0.00	0.00	0.00
2,640.0	10.98	269.12	2,635.0	-1.1	-69.8	69.8	0.00	0.00	0.00
2,680.0	10.98	269.12	2,674.2	-1.2	-77.4	77.4	0.00	0.00	0.00
2,720.0	10.98	269.12	2,713.5	-1.3	-85.0	85.0	0.00	0.00	0.00
2,760.0	10.98	269.12	2,752.8	-1.4	-92.6	92.6	0.00	0.00	0.00
2,800.0	10.98	269.12	2,792.0	-1.5	-100.3	100.3	0.00	0.00	0.00
2,840.0	10.98	269.12	2,831.3	-1.6	-107.9	107.9	0.00	0.00	0.00
2,880.0	10.98	269.12	2,870.6	-1.8	-115.5	115.5	0.00	0.00	0.00
2,920.0	10.98	269.12	2,909.8	-1.9	-123.1	123.1	0.00	0.00	0.00
2,960.0	10.98	269.12	2,949.1	-2.0	-130.7	130.8	0.00	0.00	0.00
3,000.0	10.98	269.12	2,988.4	-2.1	-138.4	138.4	0.00	0.00	0.00
3,040.0	10.98	269.12	3,027.7	-2.2	-146.0	146.0	0.00	0.00	0.00
3,080.0	10.98	269.12	3,066.9	-2.3	-153.6	153.6	0.00	0.00	0.00
3,120.0	10.98	269.12	3,106.2	-2.5	-161.2	161.2	0.00	0.00	0.00
3,160.0	10.98	269.12	3,145.5	-2.6	-168.8	168.9	0.00	0.00	0.00
3,200.0	10.98	269.12	3,184.7	-2.7	-176.5	176.5	0.00	0.00	0.00
3,240.0	10.98	269.12	3,224.0	-2.8	-184.1	184.1	0.00	0.00	0.00
3,280.0	10.98	269.12	3,263.3	-2.9	-191.7	191.7	0.00	0.00	0.00
3,320.0	10.98	269.12	3,302.5	-3.0	-199.3	199.4	0.00	0.00	0.00
3,360.0	10.98	269.12	3,341.8	-3.2	-206.9	207.0	0.00	0.00	0.00
3,400.0	10.98	269.12	3,381.1	-3.3	-214.6	214.6	0.00	0.00	0.00
3,440.0	10.98	269.12	3,420.3	-3.4	-222.2	222.2	0.00	0.00	0.00
3,480.0	10.98	269.12	3,459.6	-3.5	-229.8	229.8	0.00	0.00	0.00
3,520.0	10.98	269.12	3,498.9	-3.6	-237.4	237.5	0.00	0.00	0.00
3,560.0	10.98	269.12	3,538.1	-3.7	-245.1	245.1	0.00	0.00	0.00
3,600.0	10.98	269.12	3,577.4	-3.9	-252.7	252.7	0.00	0.00	0.00
3,640.0	10.98	269.12	3,616.7	-4.0	-260.3	260.3	0.00	0.00	0.00
3,680.0	10.98	269.12	3,655.9	-4.1	-267.9	267.9	0.00	0.00	0.00
3,720.0	10.98	269.12	3,695.2	-4.2	-275.5	275.6	0.00	0.00	0.00
3,760.0	10.98	269.12	3,734.5	-4.3	-283.2	283.2	0.00	0.00	0.00
3,800.0	10.98	269.12	3,773.7	-4.4	-290.8	290.8	0.00	0.00	0.00
3,840.0	10.98	269.12	3,813.0	-4.6	-298.4	298.4	0.00	0.00	0.00
3,880.0	10.98	269.12	3,852.3	-4.7	-306.0	306.1	0.00	0.00	0.00
3,920.0	10.98	269.12	3,891.5	-4.8	-313.6	313.7	0.00	0.00	0.00
3,960.0	10.98	269.12	3,930.8	-4.9	-321.3	321.3	0.00	0.00	0.00
4,000.0	10.98	269.12	3,970.1	-5.0	-328.9	328.9	0.00	0.00	0.00
4,040.0	10.98	269.12	4,009.3	-5.1	-336.5	336.5	0.00	0.00	0.00
4,080.0	10.98	269.12	4,048.6	-5.3	-344.1	344.2	0.00	0.00	0.00

Database:	Landmark	Local Co-ordinate Reference:	Well Cannon 22-17
Company:	EnCana Oil & Gas Weld County CO	TVD Reference:	WELL @ 4888.0ft (Original Well Elev)
Project:	SEC.17-T2N-R66W	MD Reference:	WELL @ 4888.0ft (Original Well Elev)
Site:	Cannon 0-2-17 Pad Sec.17-T2N-R66W	North Reference:	True
Well:	Cannon 22-17	Survey Calculation Method:	Minimum Curvature
Wellbore:	Wellbore #1		
Design:	Plan #1 (05-02-13)		

Planned Survey									
Measured Depth (ft)	Inclination (°)	Azimuth (°)	Vertical Depth (ft)	+N/-S (ft)	+E/-W (ft)	Vertical Section (ft)	Dogleg Rate (°/100ft)	Build Rate (°/100ft)	Turn Rate (°/100ft)
4,120.0	10.98	269.12	4,087.9	-5.4	-351.7	351.8	0.00	0.00	0.00
4,160.0	10.98	269.12	4,127.1	-5.5	-359.4	359.4	0.00	0.00	0.00
4,200.0	10.98	269.12	4,166.4	-5.6	-367.0	367.0	0.00	0.00	0.00
4,240.0	10.98	269.12	4,205.7	-5.7	-374.6	374.6	0.00	0.00	0.00
4,280.0	10.98	269.12	4,244.9	-5.8	-382.2	382.3	0.00	0.00	0.00
4,320.0	10.98	269.12	4,284.2	-6.0	-389.8	389.9	0.00	0.00	0.00
4,360.0	10.98	269.12	4,323.5	-6.1	-397.5	397.5	0.00	0.00	0.00
4,400.0	10.98	269.12	4,362.7	-6.2	-405.1	405.1	0.00	0.00	0.00
4,440.0	10.98	269.12	4,402.0	-6.3	-412.7	412.8	0.00	0.00	0.00
4,480.0	10.98	269.12	4,441.3	-6.4	-420.3	420.4	0.00	0.00	0.00
4,493.1	10.98	269.12	4,454.1	-6.5	-422.8	422.9	0.00	0.00	0.00
4,517.4	10.50	269.12	4,478.0	-6.5	-427.4	427.4	2.00	-2.00	0.00
SUSSEX									
4,520.0	10.45	269.12	4,480.6	-6.5	-427.8	427.9	2.00	-2.00	0.00
4,560.0	9.65	269.12	4,519.9	-6.6	-434.8	434.9	2.00	-2.00	0.00
4,588.4	9.08	269.12	4,548.0	-6.7	-439.4	439.5	2.00	-2.00	0.00
SUSSEX PAY									
4,600.0	8.85	269.12	4,559.4	-6.7	-441.2	441.3	2.00	-2.00	0.00
4,640.0	8.05	269.12	4,599.0	-6.8	-447.1	447.2	2.00	-2.00	0.00
4,680.0	7.25	269.12	4,638.6	-6.9	-452.4	452.5	2.00	-2.00	0.00
4,686.4	7.12	269.12	4,645.0	-6.9	-453.2	453.3	2.00	-2.00	0.00
SUSSEX MARKER									
4,720.0	6.45	269.12	4,678.4	-7.0	-457.2	457.2	2.00	-2.00	0.00
4,760.0	5.65	269.12	4,718.1	-7.1	-461.4	461.5	2.00	-2.00	0.00
4,800.0	4.85	269.12	4,758.0	-7.1	-465.1	465.1	2.00	-2.00	0.00
4,840.0	4.05	269.12	4,797.8	-7.2	-468.2	468.2	2.00	-2.00	0.00
4,880.0	3.25	269.12	4,837.8	-7.2	-470.7	470.8	2.00	-2.00	0.00
4,920.0	2.45	269.12	4,877.7	-7.2	-472.7	472.7	2.00	-2.00	0.00
4,960.0	1.65	269.12	4,917.7	-7.3	-474.1	474.2	2.00	-2.00	0.00
5,000.0	0.85	269.12	4,957.7	-7.3	-475.0	475.0	2.00	-2.00	0.00
5,027.3	0.30	269.12	4,985.0	-7.3	-475.3	475.3	2.00	-2.00	0.00
SHANNON									
5,040.0	0.05	269.12	4,997.7	-7.3	-475.3	475.4	2.00	-2.00	0.00
5,042.3	0.00	0.00	5,000.0	-7.3	-475.3	475.4	2.00	-2.00	0.00
TARGET BHL 1980'FNL,1905'FWL									
5,080.0	0.00	0.00	5,037.7	-7.3	-475.3	475.4	0.00	0.00	0.00
5,120.0	0.00	0.00	5,077.7	-7.3	-475.3	475.4	0.00	0.00	0.00
5,160.0	0.00	0.00	5,117.7	-7.3	-475.3	475.4	0.00	0.00	0.00
5,200.0	0.00	0.00	5,157.7	-7.3	-475.3	475.4	0.00	0.00	0.00
5,240.0	0.00	0.00	5,197.7	-7.3	-475.3	475.4	0.00	0.00	0.00
5,280.0	0.00	0.00	5,237.7	-7.3	-475.3	475.4	0.00	0.00	0.00
5,320.0	0.00	0.00	5,277.7	-7.3	-475.3	475.4	0.00	0.00	0.00
5,360.0	0.00	0.00	5,317.7	-7.3	-475.3	475.4	0.00	0.00	0.00
5,400.0	0.00	0.00	5,357.7	-7.3	-475.3	475.4	0.00	0.00	0.00
5,440.0	0.00	0.00	5,397.7	-7.3	-475.3	475.4	0.00	0.00	0.00
5,480.0	0.00	0.00	5,437.7	-7.3	-475.3	475.4	0.00	0.00	0.00
5,520.0	0.00	0.00	5,477.7	-7.3	-475.3	475.4	0.00	0.00	0.00
5,560.0	0.00	0.00	5,517.7	-7.3	-475.3	475.4	0.00	0.00	0.00
5,600.0	0.00	0.00	5,557.7	-7.3	-475.3	475.4	0.00	0.00	0.00
5,640.0	0.00	0.00	5,597.7	-7.3	-475.3	475.4	0.00	0.00	0.00
5,680.0	0.00	0.00	5,637.7	-7.3	-475.3	475.4	0.00	0.00	0.00
5,720.0	0.00	0.00	5,677.7	-7.3	-475.3	475.4	0.00	0.00	0.00
5,760.0	0.00	0.00	5,717.7	-7.3	-475.3	475.4	0.00	0.00	0.00
5,800.0	0.00	0.00	5,757.7	-7.3	-475.3	475.4	0.00	0.00	0.00

Database:	Landmark	Local Co-ordinate Reference:	Well Cannon 22-17
Company:	EnCana Oil & Gas Weld County CO	TVD Reference:	WELL @ 4888.0ft (Original Well Elev)
Project:	SEC.17-T2N-R66W	MD Reference:	WELL @ 4888.0ft (Original Well Elev)
Site:	Cannon 0-2-17 Pad Sec.17-T2N-R66W	North Reference:	True
Well:	Cannon 22-17	Survey Calculation Method:	Minimum Curvature
Wellbore:	Wellbore #1		
Design:	Plan #1 (05-02-13)		

Planned Survey									
Measured Depth (ft)	Inclination (°)	Azimuth (°)	Vertical Depth (ft)	+N/-S (ft)	+E/-W (ft)	Vertical Section (ft)	Dogleg Rate (°/100ft)	Build Rate (°/100ft)	Turn Rate (°/100ft)
5,840.0	0.00	0.00	5,797.7	-7.3	-475.3	475.4	0.00	0.00	0.00
5,880.0	0.00	0.00	5,837.7	-7.3	-475.3	475.4	0.00	0.00	0.00
5,920.0	0.00	0.00	5,877.7	-7.3	-475.3	475.4	0.00	0.00	0.00
5,960.0	0.00	0.00	5,917.7	-7.3	-475.3	475.4	0.00	0.00	0.00
6,000.0	0.00	0.00	5,957.7	-7.3	-475.3	475.4	0.00	0.00	0.00
6,040.0	0.00	0.00	5,997.7	-7.3	-475.3	475.4	0.00	0.00	0.00
6,080.0	0.00	0.00	6,037.7	-7.3	-475.3	475.4	0.00	0.00	0.00
6,120.0	0.00	0.00	6,077.7	-7.3	-475.3	475.4	0.00	0.00	0.00
6,160.0	0.00	0.00	6,117.7	-7.3	-475.3	475.4	0.00	0.00	0.00
6,200.0	0.00	0.00	6,157.7	-7.3	-475.3	475.4	0.00	0.00	0.00
6,240.0	0.00	0.00	6,197.7	-7.3	-475.3	475.4	0.00	0.00	0.00
6,280.0	0.00	0.00	6,237.7	-7.3	-475.3	475.4	0.00	0.00	0.00
6,320.0	0.00	0.00	6,277.7	-7.3	-475.3	475.4	0.00	0.00	0.00
6,360.0	0.00	0.00	6,317.7	-7.3	-475.3	475.4	0.00	0.00	0.00
6,400.0	0.00	0.00	6,357.7	-7.3	-475.3	475.4	0.00	0.00	0.00
6,440.0	0.00	0.00	6,397.7	-7.3	-475.3	475.4	0.00	0.00	0.00
6,480.0	0.00	0.00	6,437.7	-7.3	-475.3	475.4	0.00	0.00	0.00
6,520.0	0.00	0.00	6,477.7	-7.3	-475.3	475.4	0.00	0.00	0.00
6,560.0	0.00	0.00	6,517.7	-7.3	-475.3	475.4	0.00	0.00	0.00
6,600.0	0.00	0.00	6,557.7	-7.3	-475.3	475.4	0.00	0.00	0.00
6,640.0	0.00	0.00	6,597.7	-7.3	-475.3	475.4	0.00	0.00	0.00
6,680.0	0.00	0.00	6,637.7	-7.3	-475.3	475.4	0.00	0.00	0.00
6,720.0	0.00	0.00	6,677.7	-7.3	-475.3	475.4	0.00	0.00	0.00
6,730.3	0.00	0.00	6,688.0	-7.3	-475.3	475.4	0.00	0.00	0.00
TEEPEE BUTTES									
6,760.0	0.00	0.00	6,717.7	-7.3	-475.3	475.4	0.00	0.00	0.00
6,800.0	0.00	0.00	6,757.7	-7.3	-475.3	475.4	0.00	0.00	0.00
6,840.0	0.00	0.00	6,797.7	-7.3	-475.3	475.4	0.00	0.00	0.00
6,880.0	0.00	0.00	6,837.7	-7.3	-475.3	475.4	0.00	0.00	0.00
6,920.0	0.00	0.00	6,877.7	-7.3	-475.3	475.4	0.00	0.00	0.00
6,960.0	0.00	0.00	6,917.7	-7.3	-475.3	475.4	0.00	0.00	0.00
7,000.0	0.00	0.00	6,957.7	-7.3	-475.3	475.4	0.00	0.00	0.00
7,040.0	0.00	0.00	6,997.7	-7.3	-475.3	475.4	0.00	0.00	0.00
7,075.3	0.00	0.00	7,033.0	-7.3	-475.3	475.4	0.00	0.00	0.00
SHARON SPRINGS									
7,080.0	0.00	0.00	7,037.7	-7.3	-475.3	475.4	0.00	0.00	0.00
7,120.0	0.00	0.00	7,077.7	-7.3	-475.3	475.4	0.00	0.00	0.00
7,160.0	0.00	0.00	7,117.7	-7.3	-475.3	475.4	0.00	0.00	0.00
7,170.3	0.00	0.00	7,128.0	-7.3	-475.3	475.4	0.00	0.00	0.00
NIOBRAR - TARGET CIRCLE 1980'FNL,1905'FWL - LEGAL BOX 400' X 400' 1980'FNL & 1975'FWL									
7,200.0	0.00	0.00	7,157.7	-7.3	-475.3	475.4	0.00	0.00	0.00
7,240.0	0.00	0.00	7,197.7	-7.3	-475.3	475.4	0.00	0.00	0.00
7,280.0	0.00	0.00	7,237.7	-7.3	-475.3	475.4	0.00	0.00	0.00
7,320.0	0.00	0.00	7,277.7	-7.3	-475.3	475.4	0.00	0.00	0.00
7,360.0	0.00	0.00	7,317.7	-7.3	-475.3	475.4	0.00	0.00	0.00
7,400.0	0.00	0.00	7,357.7	-7.3	-475.3	475.4	0.00	0.00	0.00
7,412.3	0.00	0.00	7,370.0	-7.3	-475.3	475.4	0.00	0.00	0.00
FT. HAYES									
7,435.3	0.00	0.00	7,393.0	-7.3	-475.3	475.4	0.00	0.00	0.00
CODELL									
7,440.0	0.00	0.00	7,397.7	-7.3	-475.3	475.4	0.00	0.00	0.00
7,456.3	0.00	0.00	7,414.0	-7.3	-475.3	475.4	0.00	0.00	0.00
FAIRPORT									

Database:	Landmark	Local Co-ordinate Reference:	Well Cannon 22-17
Company:	EnCana Oil & Gas Weld County CO	TVD Reference:	WELL @ 4888.0ft (Original Well Elev)
Project:	SEC.17-T2N-R66W	MD Reference:	WELL @ 4888.0ft (Original Well Elev)
Site:	Cannon 0-2-17 Pad Sec.17-T2N-R66W	North Reference:	True
Well:	Cannon 22-17	Survey Calculation Method:	Minimum Curvature
Wellbore:	Wellbore #1		
Design:	Plan #1 (05-02-13)		

Planned Survey									
Measured Depth (ft)	Inclination (°)	Azimuth (°)	Vertical Depth (ft)	+N/-S (ft)	+E/-W (ft)	Vertical Section (ft)	Dogleg Rate (°/100ft)	Build Rate (°/100ft)	Turn Rate (°/100ft)
7,480.0	0.00	0.00	7,437.7	-7.3	-475.3	475.4	0.00	0.00	0.00
7,491.3	0.00	0.00	7,449.0	-7.3	-475.3	475.4	0.00	0.00	0.00
GREENHORN									
7,520.0	0.00	0.00	7,477.7	-7.3	-475.3	475.4	0.00	0.00	0.00
7,560.0	0.00	0.00	7,517.7	-7.3	-475.3	475.4	0.00	0.00	0.00
7,600.0	0.00	0.00	7,557.7	-7.3	-475.3	475.4	0.00	0.00	0.00
7,640.0	0.00	0.00	7,597.7	-7.3	-475.3	475.4	0.00	0.00	0.00
7,680.0	0.00	0.00	7,637.7	-7.3	-475.3	475.4	0.00	0.00	0.00
7,705.3	0.00	0.00	7,663.0	-7.3	-475.3	475.4	0.00	0.00	0.00
GRANEROS									
7,720.0	0.00	0.00	7,677.7	-7.3	-475.3	475.4	0.00	0.00	0.00
7,760.0	0.00	0.00	7,717.7	-7.3	-475.3	475.4	0.00	0.00	0.00
7,800.0	0.00	0.00	7,757.7	-7.3	-475.3	475.4	0.00	0.00	0.00
7,840.0	0.00	0.00	7,797.7	-7.3	-475.3	475.4	0.00	0.00	0.00
7,855.3	0.00	0.00	7,813.0	-7.3	-475.3	475.4	0.00	0.00	0.00
MOWRY									
7,870.3	0.00	0.00	7,828.0	-7.3	-475.3	475.4	0.00	0.00	0.00
J SAND									
7,880.0	0.00	0.00	7,837.7	-7.3	-475.3	475.4	0.00	0.00	0.00
7,920.0	0.00	0.00	7,877.7	-7.3	-475.3	475.4	0.00	0.00	0.00
7,945.3	0.00	0.00	7,903.0	-7.3	-475.3	475.4	0.00	0.00	0.00
SKULL CREEK A MARKER									
7,960.0	0.00	0.00	7,917.7	-7.3	-475.3	475.4	0.00	0.00	0.00
8,000.0	0.00	0.00	7,957.7	-7.3	-475.3	475.4	0.00	0.00	0.00
8,020.3	0.00	0.00	7,978.0	-7.3	-475.3	475.4	0.00	0.00	0.00

Casing Points				
Measured Depth (ft)	Vertical Depth (ft)	Name	Casing Diameter (")	Hole Diameter (")
780.0	780.0	8 5/8"	8-5/8	12-1/4

Database:	Landmark	Local Co-ordinate Reference:	Well Cannon 22-17
Company:	EnCana Oil & Gas Weld County CO	TVD Reference:	WELL @ 4888.0ft (Original Well Elev)
Project:	SEC.17-T2N-R66W	MD Reference:	WELL @ 4888.0ft (Original Well Elev)
Site:	Cannon 0-2-17 Pad Sec.17-T2N-R66W	North Reference:	True
Well:	Cannon 22-17	Survey Calculation Method:	Minimum Curvature
Wellbore:	Wellbore #1		
Design:	Plan #1 (05-02-13)		

Formations					
Measured Depth (ft)	Vertical Depth (ft)	Name	Lithology	Dip (°)	Dip Direction (°)
635.0	635.0	BASE FOX HILLS		0.00	
4,517.4	4,478.0	SUSSEX		0.00	
4,588.4	4,548.0	SUSSEX PAY		0.00	
4,686.4	4,645.0	SUSSEX MARKER		0.00	
5,027.3	4,985.0	SHANNON		0.00	
6,730.3	6,688.0	TEEPEE BUTTES		0.00	
7,075.3	7,033.0	SHARON SPRINGS		0.00	
7,170.3	7,128.0	NIOBRAR		0.00	
7,412.3	7,370.0	FT. HAYES		0.00	
7,435.3	7,393.0	CODELL		0.00	
7,456.3	7,414.0	FAIRPORT		0.00	
7,491.3	7,449.0	GREENHORN		0.00	
7,705.3	7,663.0	GRANEROS		0.00	
7,855.3	7,813.0	MOWRY		0.00	
7,870.3	7,828.0	J SAND		0.00	
7,945.3	7,903.0	SKULL CREEK A MARKER		0.00	