

Scale: 1" = 1000'
Basis of bearing is assumed from GPS True North as shown.
GPS was corrected with Aztec, NM CORS station.

- ⊗ standard GLO/BLM monument
- set standard monument
- found standard monument
- * from GLO/BLM
- ** calculated

KINDER MORGAN CO2 COMPANY, LP
GP-26 surface location
2327' FSL & 241' FEL
6934' grd.el. from GPS NAVD '88
Section 7, T.36 N., R.17 W., NMPM
921' FSL & 1186' FWL bottom hole
Section 8, T.36 N., R.17 W.
Montezuma County, CO

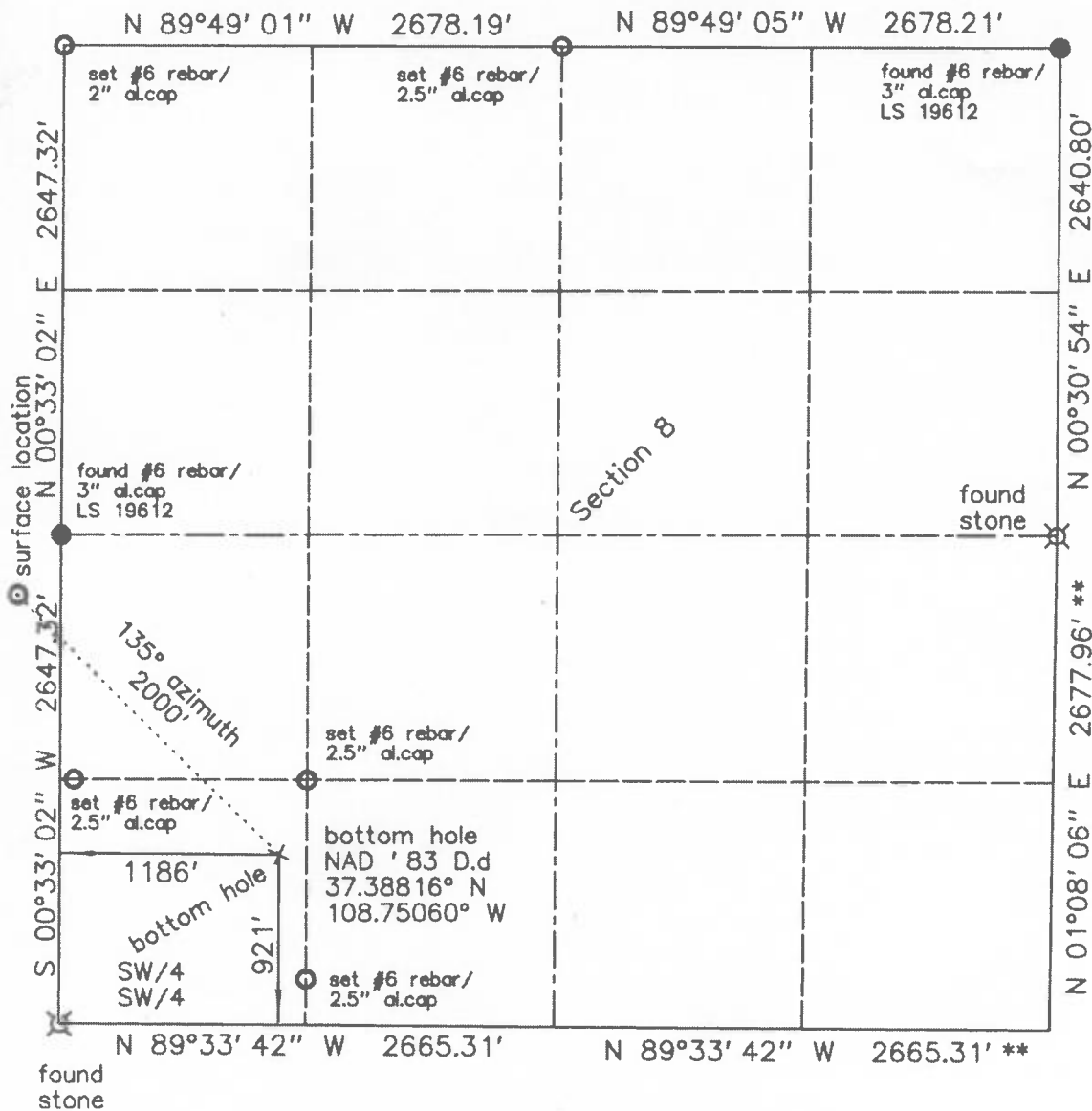
Notes:

- 1) Distances/dimensions are perpendicular to section/aliquot lines.
- 2) There are no structures within 500 feet.
- 3) There is a public road nearby within 268 feet.
- 4) There is a powerline within 250 feet.
- 5) Land use is dry land farming.

date of survey : 03/12/2013
date of plat : 03/14/2013

KNOW ALL MEN BY THESE PRESENTS that I, GERALD G. HUDDLESTON, do hereby certify that this plat was prepared from field notes of an actual survey made by me or under my supervision and that the same is true and accurate to the best of my knowledge and belief.





Scale: 1" = 1000'
Basis of bearing is assumed from GPS True North as shown.
GPS was corrected with Aztec, NM CORS station.

- ⊗ standard GLO/BLM monument
- set standard monument
- found standard monument
- * from GLO/BLM
- ** calculated

KINDER MORGAN CO2 COMPANY, LP
GP-26 bottom hole location
921' FSL & 1186' FWL bottom hole
Section 8, T.36 N., R.17 W., NMPM
Montezuma County, CO

Notes:

1) Distances/dimensions are perpendicular to section/aliquot lines.

date of survey : 03/12/2013
date of plat : 03/14/2013

KNOW ALL MEN BY THESE PRESENTS that I, GERALD G. HUDDLESTON, do hereby certify that this plat was prepared from field notes of an actual survey made by me or under my supervision and that the same is true and accurate to the best of my knowledge and belief.

