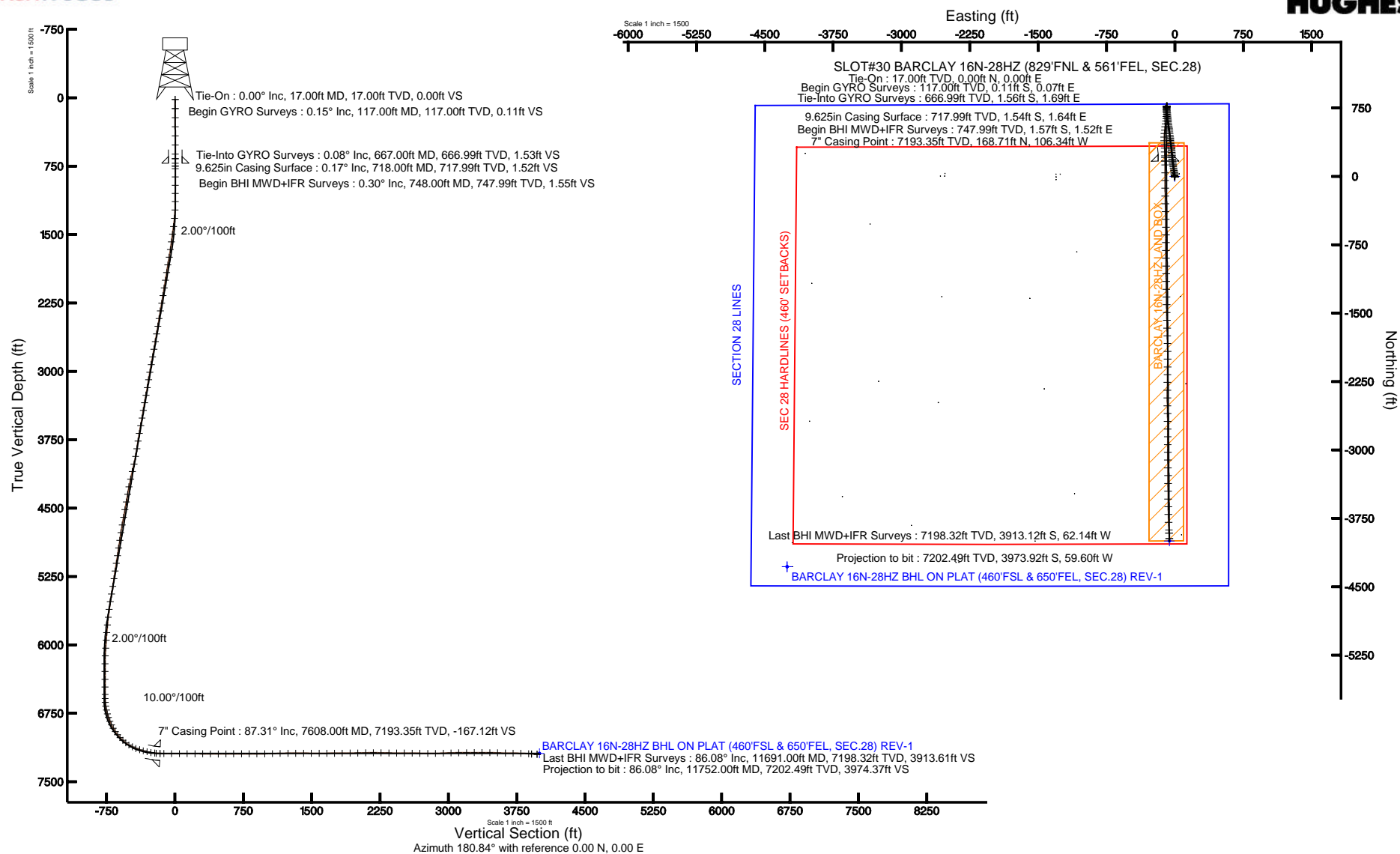




Plot reference wellpath is BARCLAY 16N-28HZ (REV-A.0) PWP



**BAKER  
HUGHES**





# Actual Wellpath Report

BARCLAY 16N-28HZ AWP

Page 1 of 7



REFERENCE WELLPATH IDENTIFICATION			
Operator	KERR-MCGEE OIL & GAS ONSHORE LP	Slot	SLOT#30 BARCLAY 16N-28HZ (829'FNL & 561'FEL, SEC.28)
Area	COLORADO	Well	BARCLAY 16N-28HZ
Field	WELD COUNTY (KERR MCGEE)	Wellbore	BARCLAY 16N-28HZ AWB
Facility	SEC.28-T3N-R66W		

REPORT SETUP INFORMATION			
Projection System	NAD83 / Lambert Colorado SP, Northern Zone (501), US feet	Software System	WellArchitect@ 3.0.0
North Reference	True	User	Precain
Scale	0.999957	Report Generated	1/29/2013 at 10:21:22 AM
Convergence at slot	0.47° East	Database/Source file	WellArchitectDB/BARCLAY_16N-28HZ_AWB.xml

WELLPATH LOCATION						
	Local coordinates		Grid coordinates		Geographic coordinates	
	North[ft]	East[ft]	Easting[US ft]	Northing[US ft]	Latitude	Longitude
Slot Location	4282.70	4255.36	3202524.70	1316898.77	40°12'03.640"N	104°46'29.816"W
Facility Reference Pt			3198303.94	1312582.33	40°11'21.322"N	104°47'24.657"W
Field Reference Pt			3197771.84	1268891.29	40°04'09.600"N	104°47'36.000"W

WELLPATH DATUM			
Calculation method	Minimum curvature	XTREME 8 (RKB) to Facility Vertical Datum	4962.00ft
Horizontal Reference Pt	Slot	XTREME 8 (RKB) to Mean Sea Level	4962.00ft
Vertical Reference Pt	XTREME 8 (RKB)	XTREME 8 (RKB) to Mud Line at Slot (SLOT#30 BARCLAY 16N-28HZ (829'FNL & 561'FEL, SEC.28))	4962.00ft
MD Reference Pt	XTREME 8 (RKB)	Section Origin	N 0.00, E 0.00 ft
Field Vertical Reference	Mean Sea Level	Section Azimuth	180.86°



# Actual Wellpath Report

BARCLAY 16N-28HZ AWP

Page 2 of 7



## REFERENCE WELLPATH IDENTIFICATION

Operator	KERR-MCGEE OIL & GAS ONSHORE LP	Slot	SLOT#30 BARCLAY 16N-28HZ (829'FNL & 561'FEL, SEC.28)
Area	COLORADO	Well	BARCLAY 16N-28HZ
Field	WELD COUNTY (KERR MCGEE)	Wellbore	BARCLAY 16N-28HZ AWB
Facility	SEC.28-T3N-R66W		

## WELLPATH DATA (153 stations) † = interpolated/extrapolated station

MD [ft]	Inclination [°]	Azimuth [°]	TVD [ft]	Vert Sect [ft]	North [ft]	East [ft]	Latitude	Longitude	DLS [°/100ft]	Comments
0.00†	0.000	148.810	0.00	0.00	0.00	0.00	40°12'03.640"N	104°46'29.816"W	0.00	
17.00	0.000	148.810	17.00	0.00	0.00	0.00	40°12'03.640"N	104°46'29.816"W	0.00	Tie-On
117.00	0.150	148.810	117.00	0.11	-0.11	0.07	40°12'03.639"N	104°46'29.815"W	0.15	Begin GYRO Surveys
217.00	0.310	120.010	217.00	0.35	-0.36	0.37	40°12'03.636"N	104°46'29.811"W	0.19	
317.00	0.440	118.940	317.00	0.67	-0.68	0.94	40°12'03.633"N	104°46'29.804"W	0.13	
417.00	0.280	131.840	416.99	1.01	-1.03	1.46	40°12'03.630"N	104°46'29.797"W	0.18	
517.00	0.160	214.040	516.99	1.28	-1.31	1.56	40°12'03.627"N	104°46'29.796"W	0.30	
617.00	0.190	130.500	616.99	1.51	-1.53	1.61	40°12'03.625"N	104°46'29.795"W	0.23	
667.00	0.080	34.430	666.99	1.53	-1.56	1.69	40°12'03.625"N	104°46'29.794"W	0.43	Tie-Into GYRO Surveys
748.00	0.300	253.410	747.99	1.55	-1.57	1.52	40°12'03.624"N	104°46'29.796"W	0.45	Begin BHI MWD+IFR Surveys
778.00	0.310	262.490	777.99	1.58	-1.60	1.37	40°12'03.624"N	104°46'29.798"W	0.16	
868.00	0.250	330.960	867.99	1.45	-1.46	1.03	40°12'03.626"N	104°46'29.803"W	0.35	
958.00	0.260	346.530	957.99	1.08	-1.09	0.89	40°12'03.629"N	104°46'29.805"W	0.08	
1049.00	0.330	315.540	1048.99	0.70	-0.71	0.65	40°12'03.633"N	104°46'29.808"W	0.19	
1139.00	0.220	220.640	1138.99	0.65	-0.65	0.36	40°12'03.634"N	104°46'29.811"W	0.46	
1230.00	2.600	347.440	1229.96	-1.23	1.23	-0.20	40°12'03.652"N	104°46'29.819"W	3.01	
1321.00	5.570	350.300	1320.72	-7.58	7.60	-1.40	40°12'03.715"N	104°46'29.834"W	3.27	
1412.00	7.310	353.040	1411.14	-17.66	17.70	-2.84	40°12'03.815"N	104°46'29.853"W	1.94	
1497.00	8.020	355.830	1495.38	-28.92	28.98	-3.93	40°12'03.926"N	104°46'29.867"W	0.94	
1582.00	7.960	355.300	1579.56	-40.68	40.76	-4.84	40°12'04.043"N	104°46'29.878"W	0.11	
1668.00	8.410	351.210	1664.68	-52.81	52.91	-6.29	40°12'04.163"N	104°46'29.897"W	0.86	
1753.00	9.660	349.460	1748.62	-65.93	66.07	-8.54	40°12'04.293"N	104°46'29.926"W	1.51	
1838.00	9.550	349.970	1832.43	-79.85	80.02	-11.08	40°12'04.431"N	104°46'29.959"W	0.16	
1923.00	9.120	348.330	1916.31	-93.35	93.56	-13.67	40°12'04.565"N	104°46'29.992"W	0.59	
2009.00	9.580	349.850	2001.16	-107.02	107.28	-16.31	40°12'04.700"N	104°46'30.026"W	0.61	
2094.00	9.330	354.230	2085.01	-120.81	121.10	-18.25	40°12'04.837"N	104°46'30.051"W	0.90	
2179.00	8.880	350.640	2168.94	-134.11	134.43	-20.01	40°12'04.968"N	104°46'30.074"W	0.85	
2264.00	10.390	350.570	2252.74	-148.11	148.46	-22.33	40°12'05.107"N	104°46'30.104"W	1.78	
2350.00	9.570	349.470	2337.44	-162.75	163.14	-24.91	40°12'05.252"N	104°46'30.137"W	0.98	
2435.00	9.320	353.570	2421.29	-176.50	176.93	-26.97	40°12'05.388"N	104°46'30.164"W	0.84	
2520.00	9.330	358.550	2505.16	-190.22	190.66	-27.91	40°12'05.524"N	104°46'30.176"W	0.95	
2606.00	9.680	357.530	2589.98	-204.40	204.85	-28.40	40°12'05.664"N	104°46'30.182"W	0.45	
2691.00	9.370	355.790	2673.81	-218.43	218.89	-29.22	40°12'05.803"N	104°46'30.193"W	0.50	
2776.00	10.370	356.110	2757.55	-232.94	233.42	-30.24	40°12'05.947"N	104°46'30.206"W	1.18	
2861.00	10.380	355.920	2841.16	-248.20	248.69	-31.31	40°12'06.098"N	104°46'30.219"W	0.04	
2947.00	9.950	354.200	2925.81	-263.29	263.81	-32.61	40°12'06.247"N	104°46'30.236"W	0.61	
3032.00	9.980	355.020	3009.53	-277.92	278.46	-33.99	40°12'06.392"N	104°46'30.254"W	0.17	
3117.00	9.380	354.940	3093.32	-292.13	292.69	-35.24	40°12'06.532"N	104°46'30.270"W	0.71	
3203.00	9.480	353.770	3178.16	-306.13	306.71	-36.63	40°12'06.671"N	104°46'30.288"W	0.25	
3288.00	10.830	352.480	3261.82	-320.98	321.59	-38.43	40°12'06.818"N	104°46'30.311"W	1.61	
3373.00	9.740	349.470	3345.46	-335.93	336.58	-40.79	40°12'06.966"N	104°46'30.342"W	1.43	
3458.00	9.290	350.120	3429.29	-349.72	350.41	-43.28	40°12'07.103"N	104°46'30.374"W	0.54	
3543.00	9.830	351.620	3513.11	-363.62	364.34	-45.52	40°12'07.240"N	104°46'30.403"W	0.70	
3629.00	10.480	356.770	3597.76	-378.67	379.42	-47.03	40°12'07.389"N	104°46'30.422"W	1.30	
3714.00	9.860	358.500	3681.43	-393.65	394.41	-47.66	40°12'07.538"N	104°46'30.430"W	0.81	



# Actual Wellpath Report

BARCLAY 16N-28HZ AWP

Page 3 of 7



## REFERENCE WELLPATH IDENTIFICATION

Operator	KERR-MCGEE OIL & GAS ONSHORE LP	Slot	SLOT#30 BARCLAY 16N-28HZ (829'FNL & 561'FEL, SEC.28)
Area	COLORADO	Well	BARCLAY 16N-28HZ
Field	WELD COUNTY (KERR MCGEE)	Wellbore	BARCLAY 16N-28HZ AWB
Facility	SEC.28-T3N-R66W		

## WELLPATH DATA (153 stations)

MD [ft]	Inclination [°]	Azimuth [°]	TVD [ft]	Vert Sect [ft]	North [ft]	East [ft]	Latitude	Longitude	DLS [°/100ft]	Comments
3799.00	8.530	355.170	3765.33	-407.20	407.97	-48.38	40°12'07.672"N	104°46'30.439"W	1.68	
3884.00	9.160	351.540	3849.32	-420.14	420.94	-49.90	40°12'07.800"N	104°46'30.459"W	0.99	
3969.00	10.520	353.090	3933.07	-434.51	435.34	-51.83	40°12'07.942"N	104°46'30.484"W	1.63	
4055.00	12.560	350.880	4017.33	-451.50	452.36	-54.26	40°12'08.110"N	104°46'30.515"W	2.43	
4140.00	13.440	355.000	4100.15	-470.43	471.33	-56.59	40°12'08.298"N	104°46'30.545"W	1.50	
4225.00	12.720	354.350	4182.94	-489.55	490.48	-58.37	40°12'08.487"N	104°46'30.568"W	0.86	
4311.00	11.130	351.510	4267.09	-507.15	508.12	-60.53	40°12'08.661"N	104°46'30.596"W	1.97	
4395.00	9.460	347.640	4349.73	-521.87	522.88	-63.20	40°12'08.807"N	104°46'30.631"W	2.15	
4481.00	10.060	351.740	4434.49	-536.17	537.22	-65.79	40°12'08.949"N	104°46'30.664"W	1.07	
4566.00	10.370	351.200	4518.14	-551.04	552.12	-68.03	40°12'09.096"N	104°46'30.693"W	0.38	
4651.00	10.700	352.490	4601.71	-566.39	567.51	-70.23	40°12'09.248"N	104°46'30.721"W	0.48	
4737.00	9.880	351.920	4686.32	-581.58	582.73	-72.31	40°12'09.399"N	104°46'30.748"W	0.96	
4822.00	9.140	352.920	4770.15	-595.47	596.65	-74.17	40°12'09.536"N	104°46'30.772"W	0.89	
4907.00	7.940	358.960	4854.21	-608.02	609.22	-75.11	40°12'09.660"N	104°46'30.784"W	1.76	
4993.00	8.810	355.080	4939.29	-620.51	621.72	-75.78	40°12'09.784"N	104°46'30.793"W	1.21	
5078.00	8.400	354.120	5023.34	-633.15	634.38	-76.97	40°12'09.909"N	104°46'30.808"W	0.51	
5163.00	9.190	351.680	5107.34	-646.02	647.27	-78.59	40°12'10.036"N	104°46'30.829"W	1.03	
5249.00	8.730	352.820	5192.29	-659.26	660.54	-80.40	40°12'10.167"N	104°46'30.852"W	0.57	
5334.00	8.490	356.920	5276.33	-671.91	673.21	-81.54	40°12'10.293"N	104°46'30.867"W	0.78	
5419.00	9.220	354.500	5360.32	-684.94	686.25	-82.53	40°12'10.422"N	104°46'30.880"W	0.96	
5504.00	9.870	354.550	5444.14	-698.95	700.28	-83.88	40°12'10.560"N	104°46'30.897"W	0.76	
5590.00	8.780	353.980	5529.00	-712.79	714.15	-85.27	40°12'10.697"N	104°46'30.915"W	1.27	
5675.00	7.470	355.020	5613.15	-724.73	726.10	-86.43	40°12'10.815"N	104°46'30.930"W	1.55	
5760.00	6.460	356.710	5697.52	-734.99	736.38	-87.18	40°12'10.917"N	104°46'30.940"W	1.21	
5846.00	5.330	358.940	5783.06	-743.81	745.21	-87.53	40°12'11.004"N	104°46'30.944"W	1.34	
5931.00	4.560	1.420	5867.75	-751.14	752.53	-87.52	40°12'11.077"N	104°46'30.944"W	0.94	
6016.00	4.310	2.070	5952.49	-757.71	759.10	-87.32	40°12'11.141"N	104°46'30.941"W	0.30	
6102.00	3.220	3.220	6038.31	-763.35	764.74	-87.07	40°12'11.197"N	104°46'30.938"W	1.27	
6187.00	3.010	24.650	6123.18	-767.78	769.16	-86.01	40°12'11.241"N	104°46'30.924"W	1.38	
6272.00	0.280	2.410	6208.14	-770.03	771.39	-85.07	40°12'11.263"N	104°46'30.912"W	3.24	
6357.00	0.230	208.820	6293.14	-770.09	771.45	-85.14	40°12'11.263"N	104°46'30.913"W	0.58	
6443.00	0.740	245.440	6379.14	-769.70	771.07	-85.73	40°12'11.260"N	104°46'30.921"W	0.67	
6528.00	0.860	263.080	6464.13	-769.37	770.76	-86.86	40°12'11.257"N	104°46'30.935"W	0.32	
6609.00	0.920	256.150	6545.12	-769.13	770.53	-88.10	40°12'11.254"N	104°46'30.951"W	0.15	
6654.00	0.920	230.030	6590.11	-768.80	770.21	-88.72	40°12'11.251"N	104°46'30.959"W	0.92	
6697.00	3.630	188.910	6633.08	-767.22	768.65	-89.20	40°12'11.236"N	104°46'30.966"W	6.97	
6739.00	8.230	182.890	6674.84	-762.90	764.33	-89.56	40°12'11.193"N	104°46'30.970"W	11.04	
6782.00	12.390	181.630	6717.14	-755.21	756.64	-89.84	40°12'11.117"N	104°46'30.974"W	9.69	
6825.00	15.440	182.230	6758.87	-744.87	746.31	-90.20	40°12'11.015"N	104°46'30.978"W	7.10	
6867.00	18.590	180.880	6799.03	-732.58	734.02	-90.52	40°12'10.894"N	104°46'30.983"W	7.56	
6910.00	22.100	178.910	6839.34	-717.64	719.08	-90.47	40°12'10.746"N	104°46'30.982"W	8.32	
6953.00	25.920	178.960	6878.61	-700.16	701.59	-90.14	40°12'10.573"N	104°46'30.978"W	8.88	
6995.00	29.550	181.050	6915.78	-680.62	682.05	-90.17	40°12'10.380"N	104°46'30.978"W	8.95	
7038.00	33.690	183.310	6952.39	-658.09	659.53	-91.05	40°12'10.157"N	104°46'30.989"W	10.01	
7081.00	38.290	185.020	6987.17	-632.87	634.34	-92.91	40°12'09.909"N	104°46'31.013"W	10.95	



# Actual Wellpath Report

BARCLAY 16N-28HZ AWP

Page 4 of 7



## REFERENCE WELLPATH IDENTIFICATION

Operator	KERR-MCGEE OIL & GAS ONSHORE LP	Slot	SLOT#30 BARCLAY 16N-28HZ (829'FNL & 561'FEL, SEC.28)
Area	COLORADO	Well	BARCLAY 16N-28HZ
Field	WELD COUNTY (KERR MCGEE)	Wellbore	BARCLAY 16N-28HZ AWB
Facility	SEC.28-T3N-R66W		

## WELLPATH DATA (153 stations) † = interpolated/extrapolated station

MD [ft]	Inclination [°]	Azimuth [°]	TVD [ft]	Vert Sect [ft]	North [ft]	East [ft]	Latitude	Longitude	DLS [°/100ft]	Comments
7123.00	43.060	185.370	7019.02	-605.59	607.09	-95.39	40°12'09.639"N	104°46'31.045"W	11.37	
7166.00	47.710	187.650	7049.21	-575.14	576.69	-98.88	40°12'09.339"N	104°46'31.090"W	11.45	
7209.00	52.580	188.490	7076.76	-542.40	544.02	-103.52	40°12'09.016"N	104°46'31.150"W	11.42	
7251.00	58.960	187.390	7100.37	-507.96	509.64	-108.30	40°12'08.676"N	104°46'31.212"W	15.34	
7294.00	64.440	184.760	7120.76	-470.27	472.01	-112.29	40°12'08.304"N	104°46'31.263"W	13.83	
7337.00	68.570	180.670	7137.90	-430.88	432.64	-114.13	40°12'07.915"N	104°46'31.287"W	12.97	
7379.00	72.400	179.290	7151.93	-391.30	393.06	-114.11	40°12'07.524"N	104°46'31.287"W	9.63	
7422.00	74.780	177.810	7164.08	-350.09	351.83	-113.07	40°12'07.117"N	104°46'31.273"W	6.44	
7464.00	77.720	177.160	7174.06	-309.37	311.08	-111.27	40°12'06.714"N	104°46'31.250"W	7.16	
7507.00	79.440	176.680	7182.57	-267.33	268.99	-109.01	40°12'06.298"N	104°46'31.221"W	4.15	
7550.00	83.140	178.370	7189.08	-224.90	226.54	-107.18	40°12'05.879"N	104°46'31.197"W	9.44	
7567.00	85.460	179.250	7190.77	-208.00	209.62	-106.83	40°12'05.711"N	104°46'31.193"W	14.59	
7608.00†	87.315	179.402	7193.35	-167.10	168.71	-106.34	40°12'05.307"N	104°46'31.187"W	4.54	7" Casing Point
7651.00	89.260	179.560	7194.64	-124.13	125.73	-105.95	40°12'04.882"N	104°46'31.153"W	4.54	
7736.00	89.590	180.220	7195.49	-39.15	40.74	-105.79	40°12'04.043"N	104°46'31.179"W	0.87	
7821.00	90.430	179.460	7195.48	45.84	-44.26	-105.55	40°12'03.203"N	104°46'31.176"W	1.33	
7906.00	90.030	179.610	7195.14	130.81	-129.26	-104.86	40°12'02.363"N	104°46'31.167"W	0.50	
7992.00	88.950	178.890	7195.90	216.78	-215.24	-103.74	40°12'01.513"N	104°46'31.153"W	1.51	
8077.00	89.930	178.940	7196.73	301.72	-300.22	-102.13	40°12'00.673"N	104°46'31.132"W	1.15	
8162.00	88.890	178.960	7197.61	386.67	-385.20	-100.57	40°11'59.833"N	104°46'31.112"W	1.22	
8248.00	89.600	178.080	7198.74	472.59	-471.17	-98.35	40°11'58.984"N	104°46'31.083"W	1.31	
8333.00	91.250	179.970	7198.11	557.53	-556.14	-96.90	40°11'58.144"N	104°46'31.065"W	2.95	
8418.00	90.150	180.170	7197.07	642.52	-641.14	-97.01	40°11'57.304"N	104°46'31.066"W	1.32	
8503.00	90.000	180.040	7196.96	727.51	-726.14	-97.16	40°11'56.464"N	104°46'31.068"W	0.23	
8588.00	89.630	180.000	7197.24	812.50	-811.14	-97.19	40°11'55.624"N	104°46'31.069"W	0.44	
8673.00	90.000	178.900	7197.51	897.47	-896.13	-96.38	40°11'54.784"N	104°46'31.058"W	1.37	
8759.00	90.830	179.030	7196.89	983.42	-982.11	-94.82	40°11'53.935"N	104°46'31.038"W	0.98	
8844.00	91.470	180.020	7195.18	1068.38	-1067.09	-94.12	40°11'53.095"N	104°46'31.029"W	1.39	
8929.00	91.850	179.340	7192.72	1153.33	-1152.05	-93.65	40°11'52.255"N	104°46'31.023"W	0.92	
9015.00	90.210	178.980	7191.17	1239.27	-1238.03	-92.38	40°11'51.406"N	104°46'31.007"W	1.95	
9100.00	90.800	179.000	7190.42	1324.22	-1323.01	-90.89	40°11'50.566"N	104°46'30.987"W	0.69	
9185.00	89.200	178.930	7190.42	1409.18	-1407.99	-89.35	40°11'49.726"N	104°46'30.967"W	1.88	
9270.00	89.220	178.660	7191.60	1494.11	-1492.97	-87.56	40°11'48.887"N	104°46'30.944"W	0.32	
9356.00	89.960	179.020	7192.21	1580.06	-1578.95	-85.82	40°11'48.037"N	104°46'30.922"W	0.96	
9441.00	91.130	178.580	7191.40	1665.00	-1663.92	-84.04	40°11'47.197"N	104°46'30.899"W	1.47	
9526.00	89.930	178.490	7190.62	1749.92	-1748.89	-81.87	40°11'46.358"N	104°46'30.871"W	1.42	
9611.00	90.520	178.230	7190.28	1834.84	-1833.85	-79.44	40°11'45.518"N	104°46'30.840"W	0.76	
9696.00	90.300	179.410	7189.67	1919.78	-1918.83	-77.69	40°11'44.678"N	104°46'30.817"W	1.41	
9781.00	91.260	180.390	7188.52	2004.76	-2003.82	-77.54	40°11'43.838"N	104°46'30.815"W	1.61	
9867.00	91.470	180.780	7186.47	2090.73	-2089.79	-78.42	40°11'42.989"N	104°46'30.827"W	0.51	
9952.00	89.960	180.590	7185.41	2175.72	-2174.78	-79.43	40°11'42.149"N	104°46'30.840"W	1.79	
10037.00	88.360	180.280	7186.65	2260.71	-2259.76	-80.08	40°11'41.309"N	104°46'30.848"W	1.92	
10123.00	89.070	180.720	7188.58	2346.69	-2345.74	-80.83	40°11'40.459"N	104°46'30.858"W	0.97	
10208.00	89.840	179.870	7189.39	2431.68	-2430.73	-81.27	40°11'39.620"N	104°46'30.863"W	1.35	
10293.00	89.810	179.110	7189.65	2516.65	-2515.73	-80.51	40°11'38.780"N	104°46'30.853"W	0.89	

### REFERENCE WELLPATH IDENTIFICATION

Operator	KERR-MCGEE OIL & GAS ONSHORE LP	Slot	SLOT#30 BARCLAY 16N-28HZ (829'FNL & 561'FEL, SEC.28)
Area	COLORADO	Well	BARCLAY 16N-28HZ
Field	WELD COUNTY (KERR MCGEE)	Wellbore	BARCLAY 16N-28HZ AWB
Facility	SEC.28-T3N-R66W		

### WELLPATH DATA (153 stations)

MD [ft]	Inclination [°]	Azimuth [°]	TVD [ft]	Vert Sect [ft]	North [ft]	East [ft]	Latitude	Longitude	DLS [°/100ft]	Comments
10379.00	89.530	178.770	7190.15	2602.60	-2601.71	-78.92	40°11'37.930"N	104°46'30.833"W	0.51	
10464.00	88.640	179.540	7191.50	2687.55	-2686.69	-77.66	40°11'37.090"N	104°46'30.817"W	1.38	
10549.00	89.410	179.670	7192.95	2772.52	-2771.67	-77.08	40°11'36.250"N	104°46'30.809"W	0.92	
10634.00	90.950	179.830	7192.68	2857.50	-2856.67	-76.71	40°11'35.410"N	104°46'30.804"W	1.82	
10720.00	92.460	179.930	7190.12	2943.45	-2942.63	-76.53	40°11'34.561"N	104°46'30.802"W	1.76	
10805.00	91.500	179.640	7187.19	3028.38	-3027.58	-76.21	40°11'33.722"N	104°46'30.798"W	1.18	
10890.00	90.890	179.620	7185.41	3113.34	-3112.56	-75.66	40°11'32.882"N	104°46'30.791"W	0.72	
10976.00	90.330	179.230	7184.50	3199.31	-3198.55	-74.80	40°11'32.032"N	104°46'30.780"W	0.79	
11061.00	89.930	179.360	7184.31	3284.28	-3283.54	-73.75	40°11'31.192"N	104°46'30.766"W	0.49	
11146.00	90.060	179.810	7184.31	3369.25	-3368.54	-73.14	40°11'30.352"N	104°46'30.758"W	0.55	
11232.00	89.190	179.760	7184.88	3455.24	-3454.53	-72.81	40°11'29.502"N	104°46'30.754"W	1.01	
11317.00	87.900	179.110	7187.03	3540.18	-3539.50	-71.98	40°11'28.663"N	104°46'30.743"W	1.70	
11402.00	89.230	179.440	7189.16	3625.12	-3624.46	-70.90	40°11'27.823"N	104°46'30.730"W	1.61	
11487.00	89.470	178.600	7190.13	3710.07	-3709.45	-69.45	40°11'26.983"N	104°46'30.711"W	1.03	
11573.00	87.960	177.910	7192.06	3795.96	-3795.38	-66.83	40°11'26.134"N	104°46'30.677"W	1.93	
11658.00	86.480	177.620	7196.18	3880.73	-3880.21	-63.52	40°11'25.296"N	104°46'30.634"W	1.77	
11691.00	86.080	177.600	7198.32	3913.61	-3913.12	-62.14	40°11'24.971"N	104°46'30.617"W	1.21	Last BHI MWD+IFR Surveys
11752.00	86.080	177.600	7202.49	3974.37	-3973.92	-59.60	40°11'24.370"N	104°46'30.584"W	0.00	Projection to bit

### HOLE & CASING SECTIONS - Ref Wellbore: BARCLAY 16N-28HZ AWB Ref Wellpath: BARCLAY 16N-28HZ AWP

String/Diameter	Start MD [ft]	End MD [ft]	Interval [ft]	Start TVD [ft]	End TVD [ft]	Start N/S [ft]	Start E/W [ft]	End N/S [ft]	End E/W [ft]
13.5in Open Hole	17.00	718.00	701.00	17.00	717.99	0.00	0.00	-1.54	1.64
9.625in Casing Surface	17.00	718.00	701.00	17.00	717.99	0.00	0.00	-1.54	1.64
8.75in Open Hole	718.00	7618.00	6900.00	717.99	7193.78	-1.54	1.64	158.72	-106.24
7in Casing Intermediate	17.00	7608.00	7591.00	17.00	7193.35	0.00	0.00	168.71	-106.34
6.125in Open Hole	7608.00	11752.00	4144.00	7193.35	7202.49	168.71	-106.34	-3973.92	-59.60



# Actual Wellpath Report

BARCLAY 16N-28HZ AWP

Page 6 of 7



REFERENCE WELLPATH IDENTIFICATION			
Operator	KERR-MCGEE OIL & GAS ONSHORE LP	Slot	SLOT#30 BARCLAY 16N-28HZ (829'FNL & 561'FEL, SEC.28)
Area	COLORADO	Well	BARCLAY 16N-28HZ
Field	WELD COUNTY (KERR MCGEE)	Wellbore	BARCLAY 16N-28HZ AWB
Facility	SEC.28-T3N-R66W		

TARGETS									
Name	MD [ft]	TVD [ft]	North [ft]	East [ft]	Grid East [US ft]	Grid North [US ft]	Latitude	Longitude	Shape
SECTION 28 LINES		14.70	-4281.97	-4255.94	3198304.10	1312582.33	40°11'21.322"N	104°47'24.655"W	polygon
BARCLAY 16N-28HZ BHL ON PLAT (460'FSL & 650'FEL, SEC.28) REV-1		7192.00	-3999.30	-58.98	3202498.42	1312899.30	40°11'24.119"N	104°46'30.576"W	point
BARCLAY 16N-28HZ LAND BOX		7200.00	0.00	0.00	3202524.70	1316898.77	40°12'03.640"N	104°46'29.816"W	polygon
SEC 28 HARDLINES (460' SETBACKS)		7315.00	-4281.97	-4255.94	3198304.10	1312582.33	40°11'21.322"N	104°47'24.655"W	polygon

WELLPATH COMPOSITION - Ref Wellbore: BARCLAY 16N-28HZ AWB Ref Wellpath: BARCLAY 16N-28HZ AWP				
Start MD [ft]	End MD [ft]	Positional Uncertainty Model	Log Name/Comment	Wellbore
17.00	667.00	Generic gyro - continuous (Standard)	GYRODATA SURVEYS <117-667>	BARCLAY 16N-28HZ AWB
667.00	7567.00	NaviTrak (MAGCORR,IFR)	BHI MWD+IFR SURVEYS 8 3/4" HOLE <748-7567>	BARCLAY 16N-28HZ AWB
7567.00	11691.00	OnTrak (MAGCORR,IFR)	BHI MWD+IFR SURVEYS 6 1/8" HOLE <7651-11691>	BARCLAY 16N-28HZ AWB
11691.00	11752.00	Blind Drilling (std)	Projection to bit	BARCLAY 16N-28HZ AWB



# Actual Wellpath Report

BARCLAY 16N-28HZ AWP

Page 7 of 7



## REFERENCE WELLPATH IDENTIFICATION

Operator	KERR-MCGEE OIL & GAS ONSHORE LP	Slot	SLOT#30 BARCLAY 16N-28HZ (829'FNL & 561'FEL, SEC.28)
Area	COLORADO	Well	BARCLAY 16N-28HZ
Field	WELD COUNTY (KERR MCGEE)	Wellbore	BARCLAY 16N-28HZ AWB
Facility	SEC.28-T3N-R66W		

## WELLPATH COMMENTS

MD [ft]	Inclination [°]	Azimuth [°]	TVD [ft]	Comment
17.00	0.000	148.810	17.00	Tie-On
117.00	0.150	148.810	117.00	Begin GYRO Surveys
667.00	0.080	34.430	666.99	Tie-Into GYRO Surveys
748.00	0.300	253.410	747.99	Begin BHI MWD+IFR Surveys
7608.00	87.315	179.402	7193.35	7" Casing Point
11691.00	86.080	177.600	7198.32	Last BHI MWD+IFR Surveys
11752.00	86.080	177.600	7202.49	Projection to bit