

T6S, R96W, 6th P.M.

SCHOOL HOUSE POINT OM02B B21 696

Elev. Ungraded Ground = **8298'**

Elev. Graded Ground = **8288'**

BERRY PETROLEUM COMPANY

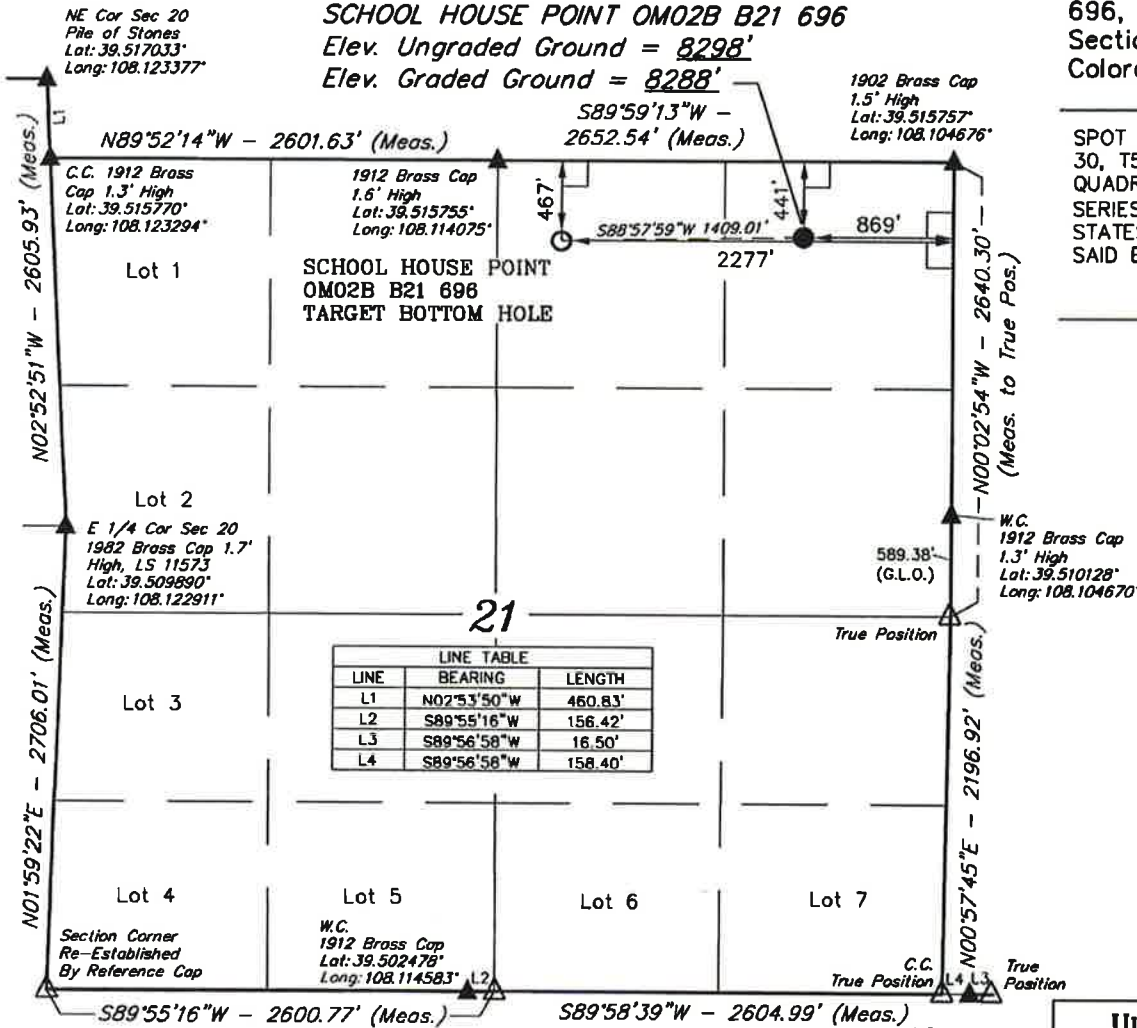
Well location, SCHOOL HOUSE POINT OM02B B21 696, located as shown in the NE 1/4 NE 1/4 of Section 21, T6S, R96W, 6th P.M., Garfield County, Colorado.

BASIS OF ELEVATION

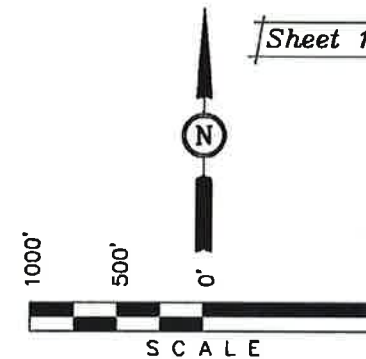
SPOT ELEVATION AT THE NORTHWEST CORNER OF SECTION 30, T5S, R95W, 6th P.M. TAKEN FROM THE FORKED GULCH QUADRANGLE, COLORADO, GARFIELD COUNTY, 7.5 MINUTE SERIES (TOPOGRAPHICAL MAP) PUBLISHED BY THE UNITED STATES DEPARTMENT OF THE INTERIOR, GEOLOGICAL SURVEY. SAID ELEVATION IS MARKED AS BEING 5966 FEET.

BASIS OF BEARINGS

BASIS OF BEARINGS IS A G.P.S. OBSERVATION.



Sheet 1a of 12



CERTIFICATE

THIS IS TO CERTIFY THAT THE ABOVE PLAT WAS PREPARED AND LOCATION AS SHOWN WAS STAKED ON THE GROUND FROM FIELD NOTES OF ACTUAL SURVEYS MADE BY ME OR UNDER MY SUPERVISION AND THAT THE SAME ARE TRUE AND CORRECT TO THE BEST OF MY KNOWLEDGE AND BELIEF.

REGISTERED LAND SURVEYOR
REGISTRATION NO. 14920
STATE OF COLORADO

UINTAH ENGINEERING & LAND SURVEYING

85 SOUTH 200 EAST - VERNAL, UTAH 84078

(435) 789-1017

LEGEND:

└ = 90° SYMBOL

● = PROPOSED WELL HEAD.

▲ = SECTION CORNERS LOCATED.

△ = SECTION CORNERS RE-EST.

(Not Set on Ground)

NOTE:
SEE ADDENDUM PLAT FOR EXISTING IMPROVEMENTS WITHIN 400' OF THE PROPOSED WELL DISTURBANCE.

NAD 83 (TARGET BOTTOM HOLE)	NAD 83 (SURFACE LOCATION)
LATITUDE = 39°30'52.11" (39.514475)	LATITUDE = 39°30'52.36" (39.514544)
LONGITUDE = 108°06'45.88" (108.112744)	LONGITUDE = 108°06'27.91" (108.107753)
NAD 27 (TARGET BOTTOM HOLE)	NAD 27 (SURFACE LOCATION)
LATITUDE = 39°30'52.19" (39.514497)	LATITUDE = 39°30'52.44" (39.514567)
LONGITUDE = 108°06'43.60" (108.112111)	LONGITUDE = 108°06'25.63" (108.107119)

SCALE 1" = 1000'	DATE SURVEYED: 02-07-12	DATE DRAWN: 02-28-12
PARTY B.J. T.M. D.R.B.	REFERENCES G.L.O. PLAT	
WEATHER COLD	FILE BERRY PETROLEUM COMPANY	