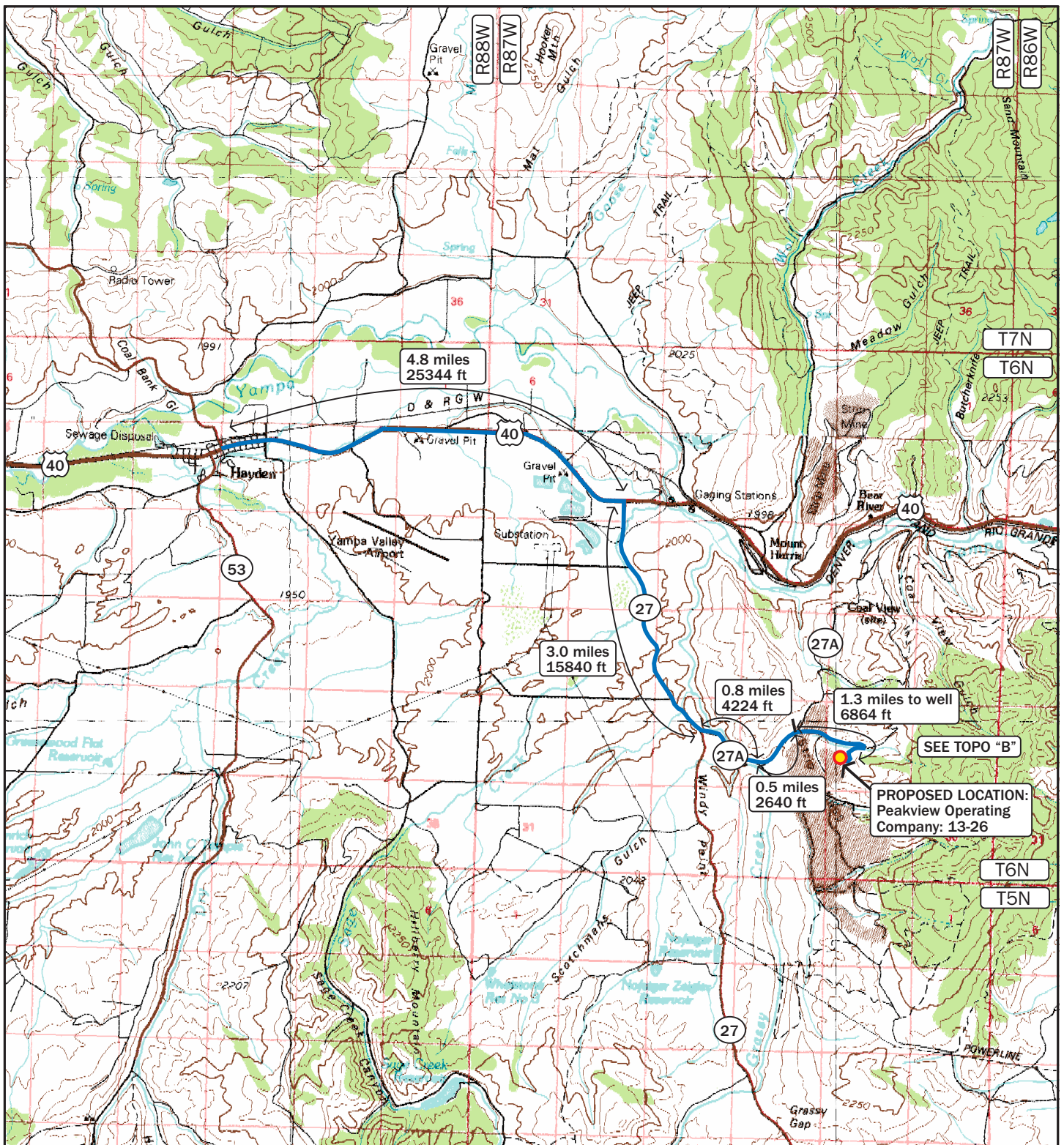


LEGEND:					ACCESS ROAD MAP: B TOPO	
<div> <div>— Existing County Road</div> <div>— Existing Lease Road</div> <div>— Proposed Access Road</div> </div> <div> <div>— Production Line Alternatives</div> <div>— Lease Lines</div> </div>					<div>0 1000 2000 FT</div>	
<div>Peakview Operating Company, LLC.</div> <div>216 Sixteenth Street, Suite 1450</div> <div>Denver, CO 80202</div>					<div>GRASSY CREEK</div> <div>13-26</div> <div>NW1/4 SW1/4</div> <div>SECTION 26, T6N R87W, 6TH P.M.</div> <div>ROUTT COUNTY, COLORADO</div> <div>SHL 2008.8' FSL 998.2' FWL</div> <div>BHL 1947.1' FSL 717.0' FWL</div>	
<div>SCALE</div> <div>DRG</div> <div>DATE</div> <div>FILE</div>					<div>DOWLING LAND SURVEYORS, LLC</div> <div>P.O. BOX 954</div> <div>HAYDEN, COLORADO 81639</div> <div>(970) 276-3613</div> <div>dowling@plotz.biz</div>	



LEGEND:

- Proposed Location



ACCESS ROAD MAP: A TOPO

Peakview Operating Company, LLC.
216 Sixteenth Street, Suite 1450
Denver, CO 80202

GRASSY CREEK
13-26
NW1/4 SW1/4
SECTION 26, T6N R87W, 6TH P.M.
ROUTT COUNTY, COLORADO
SHL 2008.8' FSL 998.2' FWL
BHL 1947.1' FSL 717.0' FWL

DOWLING LAND SURVEYORS, LLC
P.O. BOX 954
HAYDEN, COLORADO 81639
(970) 276-3613
dowling@plotz.biz

SCALE	DRG	DATE	FILE
		2/25/13	pg12