

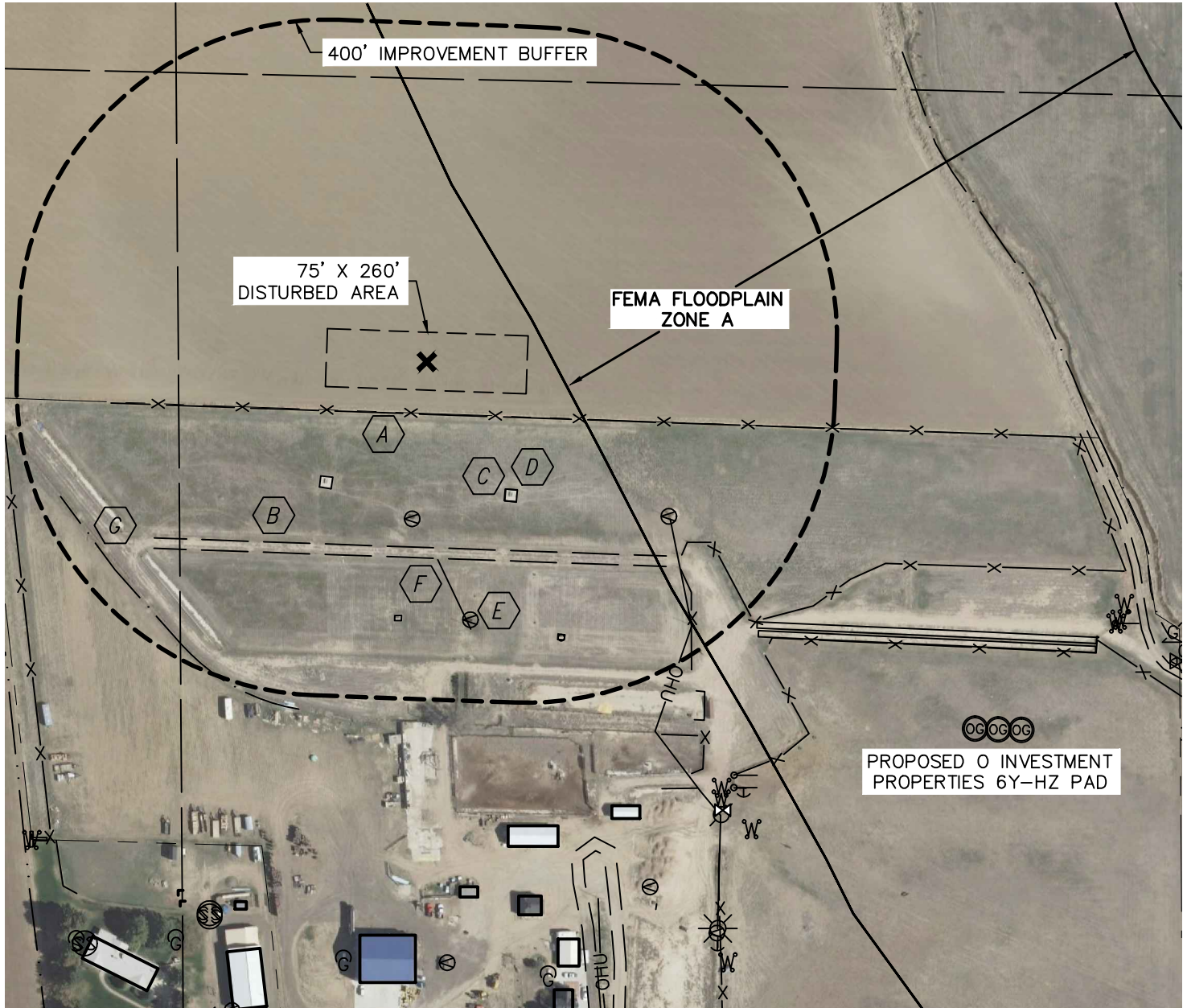


Lat40°, Inc. 1635 Foxtrail Drive, Suite 325 Loveland, CO 970-776-3321

PRODUCTION FACILITY LOCATION DRAWING

SECTION: 6
TOWNSHIP: 6N
RANGE: 65W

O INVESTMENT PROPERTIES 6Y-TB PAD



REFERENCE POINT LOCATION:

LAT: 40.51241°N
LONG: 104.70046°W
ELEV: 4784'
PDOP: 1.6
DATE: 3/1/2013
OPERATOR: WYATT HALL
1/41/4: SE1/4SE1/4
FSL: 956'
FEL: 1002'
DISTANCE TO WELL: 854'
ASSOCIATED NEW WELLS:
O INVESTMENT PROPERTIES
6T 421, 6Y-241, 6Y-401
ASSOCIATED EXISTING WELLS:
N/A

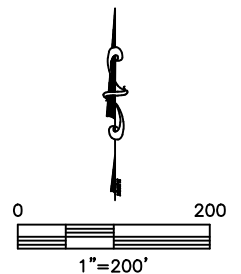
IMPROVEMENTS:

- A FENCE 68' S, 410' SE
- B FIELD ROAD 240' S
- C CONCRETE PAD 192' SW, 193' SE, 391' SW, 330' S
- D WATER TANK 203' SW, 204' SE, 397' SE, 333' S
- E SPIGOT 204' S, 339' SE, 372' SE
- F OVERHEAD UTILITY LINE 256' S, 375' SE
- G DITCH 480' SW

LEGEND

X - REFERENCE POINT
ALL DISTANCES ARE APPROXIMATE.

NEAREST: BUILDING 545' SE (OUT-BUILDING),
PUBLIC ROAD 956' S (CR 72), ABOVE GROUND UTILITY 256' S,
RAILROAD 1321' SW, PROPERTY LINE 67' S



DATE: rev 3/1/2013
PROJECT#: 2012160