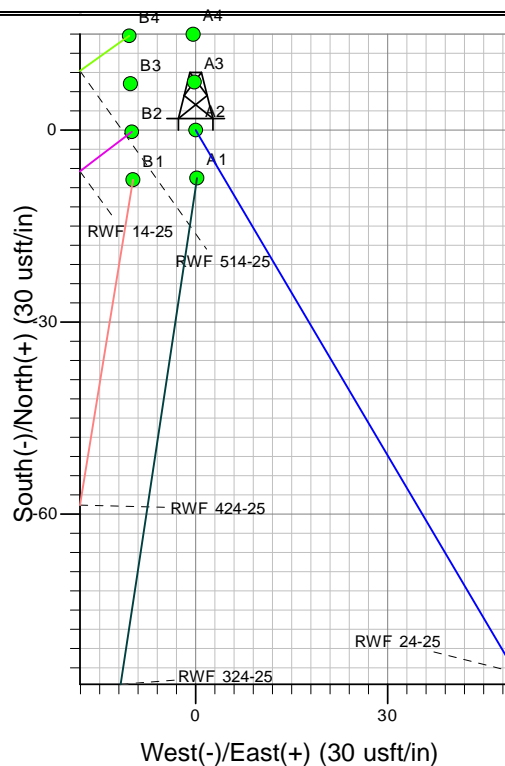
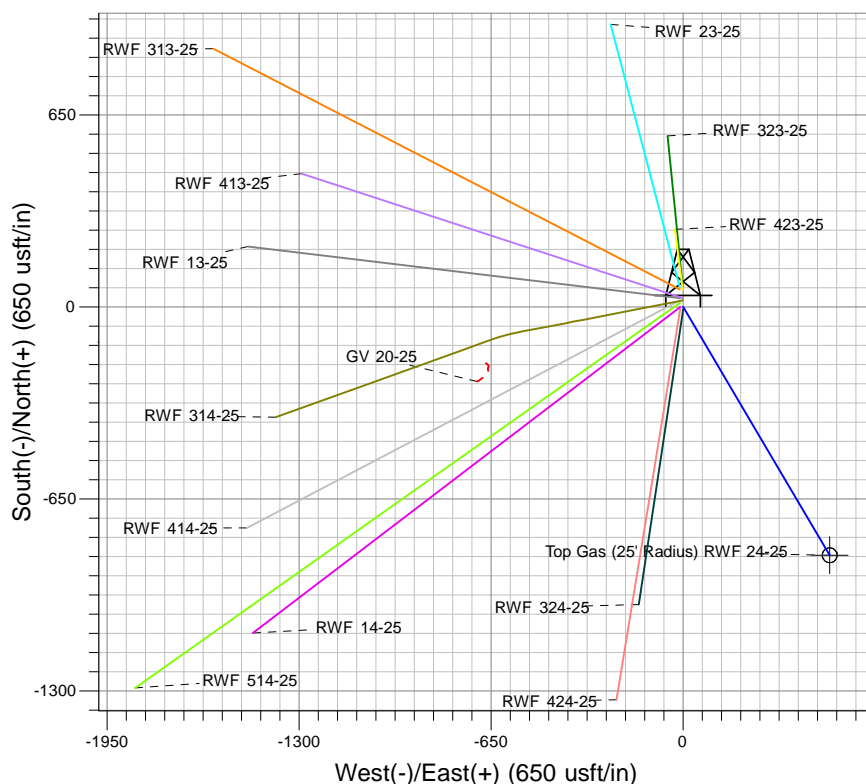
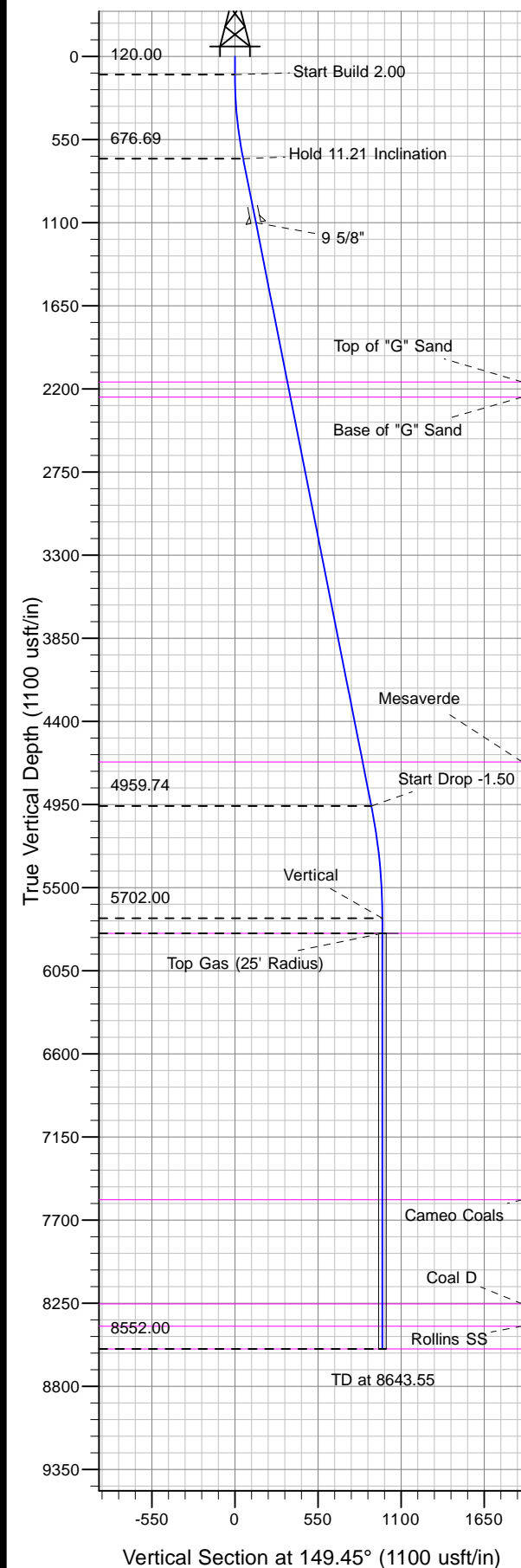




Well Name: RWF 24-25  
Surface Location: RWF 23-25 Pad  
North American Datum 1983 , US State Plane 1983, Colorado Central Zone  
Ground Elevation: 6096.00

| +N/-S | +E/-W | Northing   | Easting    | Latitude | Longitude  | Slot |
|-------|-------|------------|------------|----------|------------|------|
| 0.00  | 0.00  | 1613251.20 | 2340311.80 | 39.49385 | -107.83784 | A2   |

KELLY BUSHING @ 6122.00usft (Nabors 576)



Project: RU 25-06S-094W  
Site: RWF 23-25 Pad  
Well: RWF 24-25  
Design #1 06Dec12 kjs



Azimuths to True North  
Magnetic North: 10.09°  
Magnetic Field  
Strength: 52119.3snT  
Dip Angle: 65.73°  
Date: 12/6/2012  
Model: IGRF2010

#### ANNOTATIONS

| MD      | Inc   | Azi    | TVD     | +N/-S   | +E/-W  | Vsect  | Departure | Annotation             |
|---------|-------|--------|---------|---------|--------|--------|-----------|------------------------|
| 120.00  | 0.00  | 0.00   | 120.00  | 0.00    | 0.00   | 0.00   | 0.00      | Start Build 2.00       |
| 680.26  | 11.21 | 149.45 | 676.69  | -47.03  | 27.76  | 54.61  | 54.61     | Hold 11.21 Inclination |
| 5046.54 | 11.21 | 149.45 | 4959.74 | -777.71 | 459.03 | 903.08 | 903.08    | Start Drop -1.50       |
| 5793.55 | 0.00  | 0.00   | 5702.00 | -840.42 | 496.04 | 975.89 | 975.89    | Vertical               |
| 5893.55 | 0.00  | 0.00   | 5802.00 | -840.42 | 496.04 | 975.89 | 975.89    | Top Gas                |
| 8643.55 | 0.00  | 0.00   | 8552.00 | -840.42 | 496.04 | 975.89 | 975.89    | TD at 8643.55          |