

Downhole Schematic for OSKARSON 4-6-33



Project :DJ Basin

Area : Wattenberg

As Of : 09/13/2012

API # :05123331240000

County :

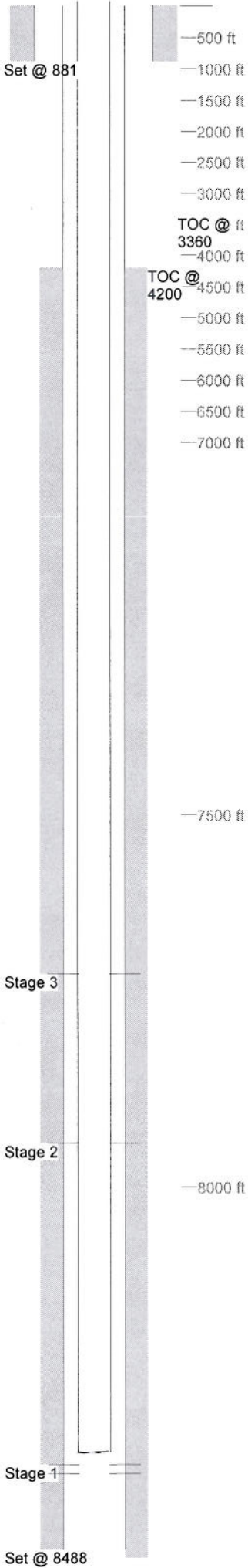
GL :           ft

Surface Location :

BHL :

KB to GL :   13.0 ft

KB :           ft



Casing Details									
Section	Hole	Casing	Mass	Set At	Length	Thread	Grade	Description	
Surface	12.250	8.625	0	881	1		K55	Guide Shoe	
		8.625	24	880	41	ST&C	J-55	SJ/BAFFLE	
		8.6.5	24	839	825	ST&C	J-55	CASING	
				13	13			Landing Joint	
Production	7.875		0	8,488	1		K-55	Float Shoe	
		4.5	11.6	8,487	21		N-80	Shoe Jt	
			0	8,466	1		K-55	Float Collar	
		4.5	11.6	8,465	884		SB-80	Casing	
		4.5	11.6	7,581	21		N-80	Marker Jt	
		4.5	11.6	7,560	7,548		SB-80	Casing	
		4.5	0	13	13		SB-80	Landing Jt	
Cement Details									
Section	Sequence	Top	Density	Blend / Additives					
Surface	Lead	0	14.5	TYPE III Cmt Class G / + 0.08 lbs/sk Static Free + 1.5% Calcium Chloride + 0.15 lbs/sk Cello Flake + 60.5% Fresh Water.					
Production	Lead	4,200	12.5	Premium Lite Cmt / +0.1% R-3 + 0.2% CD-32 +0.7% FL-52 + 0.2% ASA-301 + 6% Bentonite + 3 lbs/sx CSE-2					
	Tail	7,100	13.5	(50:50 Poz, Fly Ash / Class G Cmt + 0.1% R-3 + 0.6% FL-52 + 3% Bentonite + 0.1% SM + 20% Silica Flour					
Tubing and Downhole Equipment									
O.D.	Length	Depth	Description						
0.000	11.00	11.00	KB						
0.000	0.50	11.50	TUBING HANGER						
2.375	8,339.44	8,350.94	254 JTS 4.7# J55 EUE 8RD						
0.000	1.10	8,352.04	SN						
0.000	10.07	8,362.11	TUBING PUP						
0.000	0.78	8,362.89	PARTIAL PUMP OUT SUB						
Perforations									
Stage 1	Date	From	To	Shots	Stage 3	Date	From	To	Shots
	08/20/2012	8,386	8,404	36		08/20/2012	7,941	7,955	42
		8,374	8,378	8					
Stage 2	Date	From	To	Shots	Stage 3	Date	From	To	Shots
	08/21/2012	7,713	7,725	48		08/21/2012	7,713	7,725	48
Frac Summary									
Stage 1 : 8,374 - 8,404, 44 - 0.420" shots, 3748 bbls of Hyb. Vistar 18, 250400 lbs of 20/40 Sand Report									
Date: 08/20/2012									
Stage 2 : 7,941 - 7,955, 42 - 0.420" shots, 2706 bbls of Hyb. Vistar 22, 250140 lbs of 20/40 Sand Report									
Date: 08/21/2012									
Stage 3 : 7,713 - 7,725, 48 - 0.420" shots, 3289 bbls of Hyb. Vistar 18, 250140 lbs of 30/50 Sand Report									
Date: 08/22/2012									