



PHOENIX SURVEYS, INC.

Gamma Ray C.C.L.
Cement Bond V.D.L.

Company	Black Raven Energy Inc.	Company	Black Raven Energy Inc.				
Well	Glenn-Biddle B #6	Well	Glenn-Biddle B #6				
Field	Adena	Field	Adena				
County	Morgan	County	Morgan	State	CO		
State	CO	Location:	API # :	Other Services			
		SE SE					
		SEC 31 TWP 2N RGE 57W					
Permanent Datum	GL	Elevation					
Log Measured From	GL	K.B. D.F. G.L.					
Drilling Measured From							
Date	September 20, 2011						
Run Number	One						
Depth Driller							
Depth Logger	5595						
Bottom Logged Interval	5593						
Top Log Interval	4378						
Open Hole Size	Water						
Type Fluid							
Density / Viscosity							
Max. Recorded Temp.							
Estimated Cement Top							
Time Well Ready							
Time Logger on Bottom							
Equipment Number	48						
Location	Brighton, CO						
Recorded By	Scott Dizmang						
Witnessed By	Chris Reed						
Borehole Record		Tubing Record					
Run Number	Bit	From	To	Size	Weight	From	To
Casing Record	Size			Wgt/Ft		Top	Bottom
Surface String							
Prot. String							
Production String							
Liner							

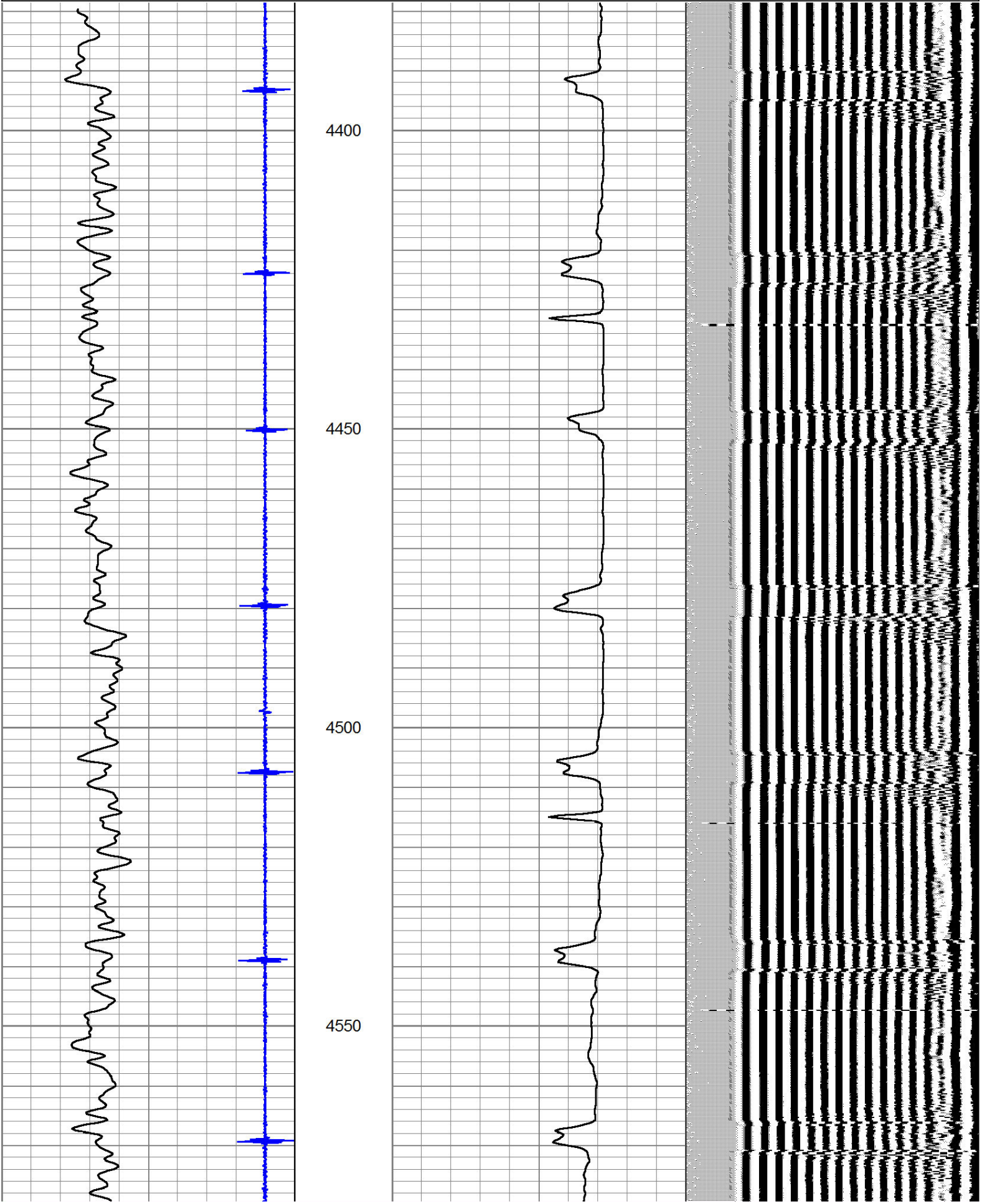
<<< Fold Here >>>

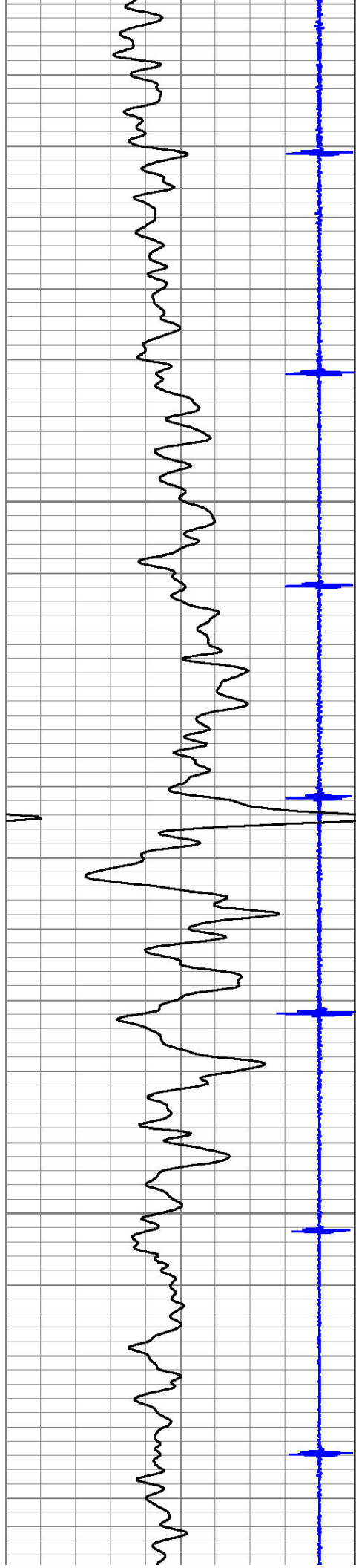
All interpretations are opinions based on inferences from electrical or other measurements and we cannot and do not guarantee the accuracy or correctness of any interpretation, and we shall not, except in the case of gross or willful negligence on our part, be liable or responsible for any loss, costs, damages, or expenses incurred or sustained by anyone resulting from any interpretation made by any of our officers, agents or employees. These interpretations are also subject to our general terms and conditions set out in our current Price Schedule.

Comments

Charted by: Depth in Feet scaled 1:2.15

9	Collar Locator	-1	0	Amplified Amplitude (mV)	30	200	Variable Density	1200
0	Gamma Ray (GAPI)	200	0	Amplitude (mV)	100			





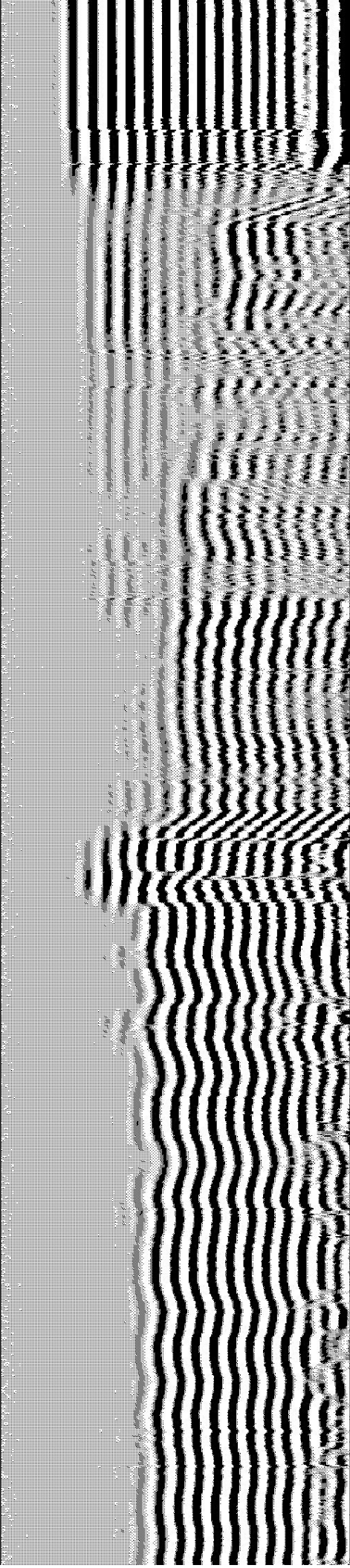
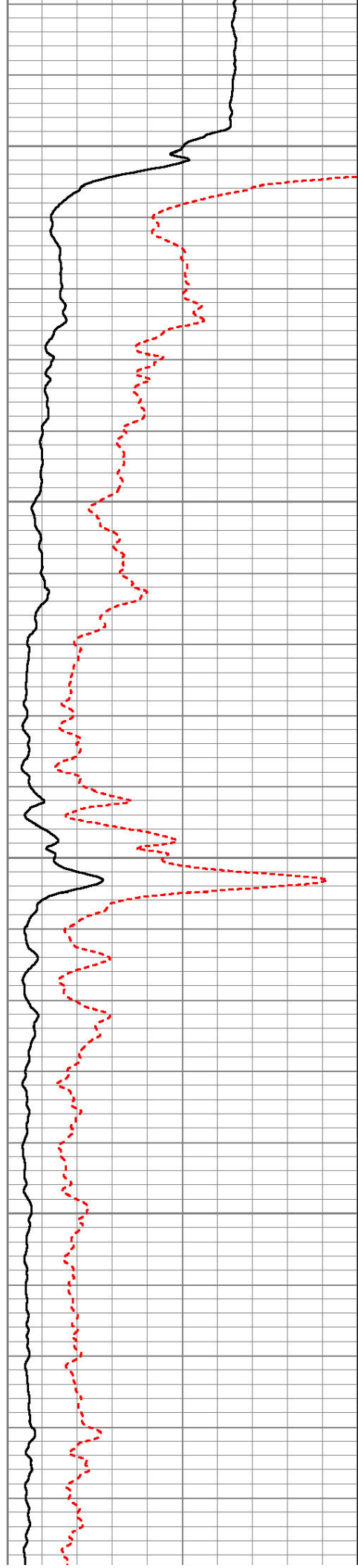
4600

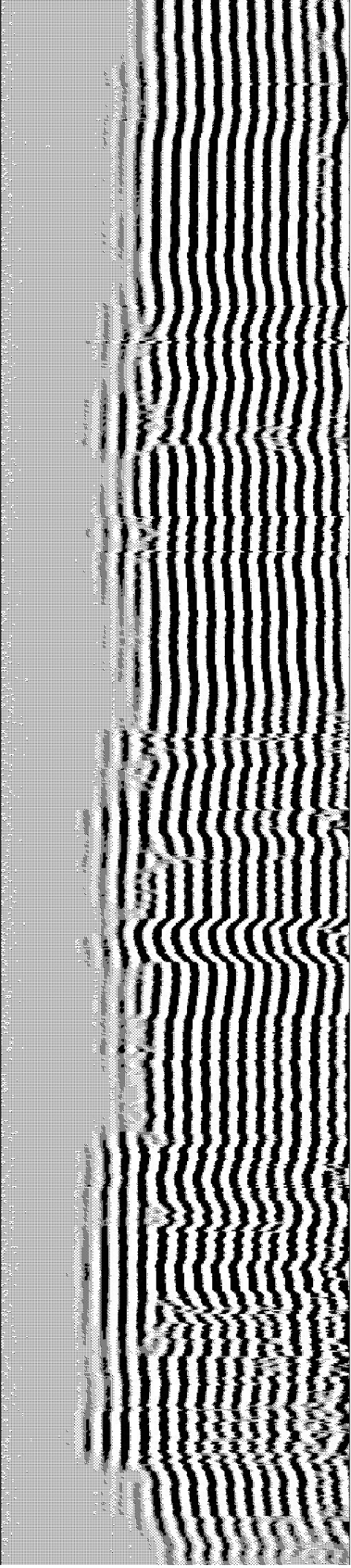
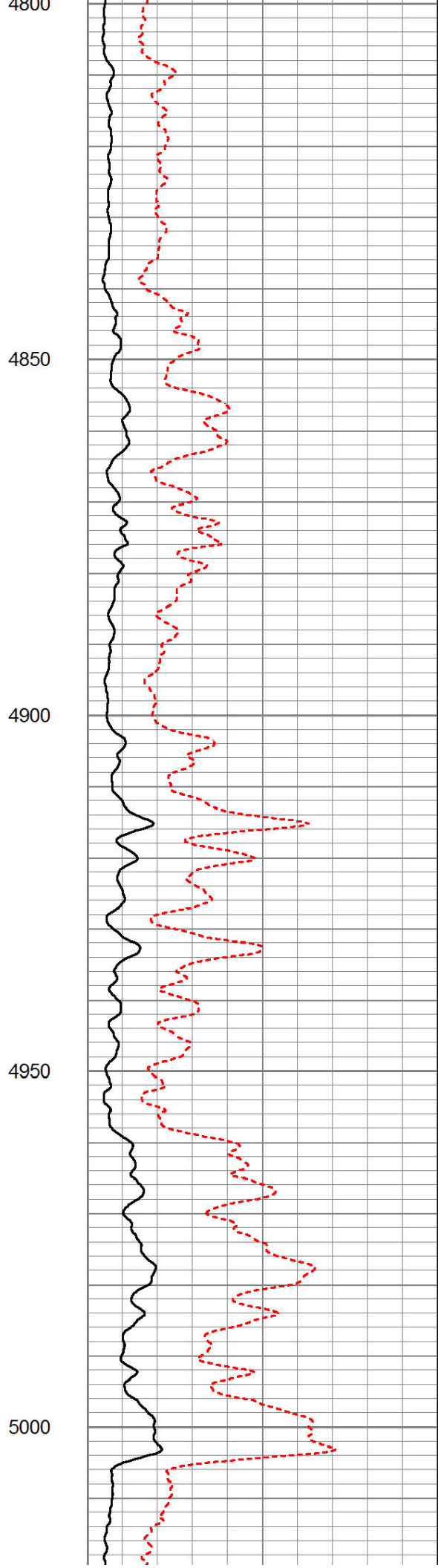
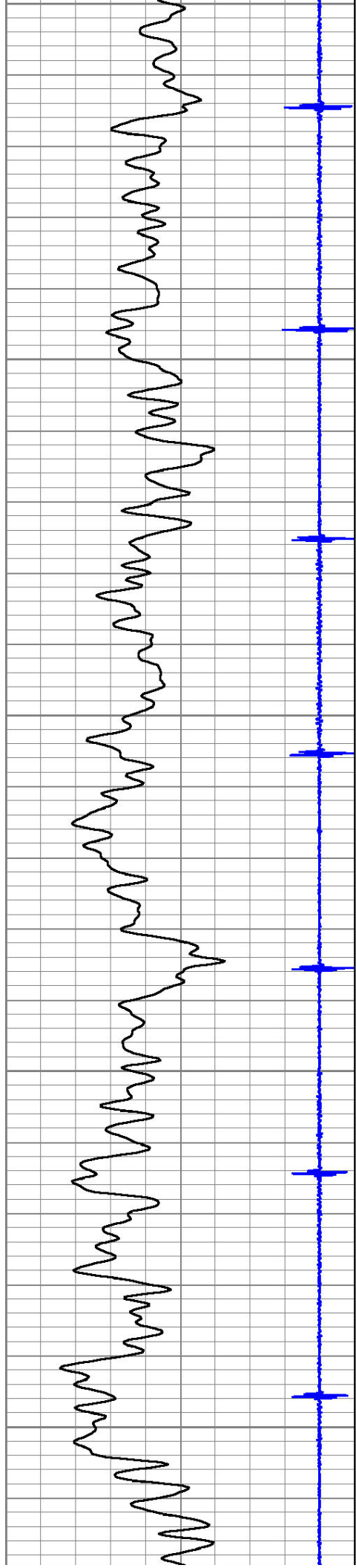
4650

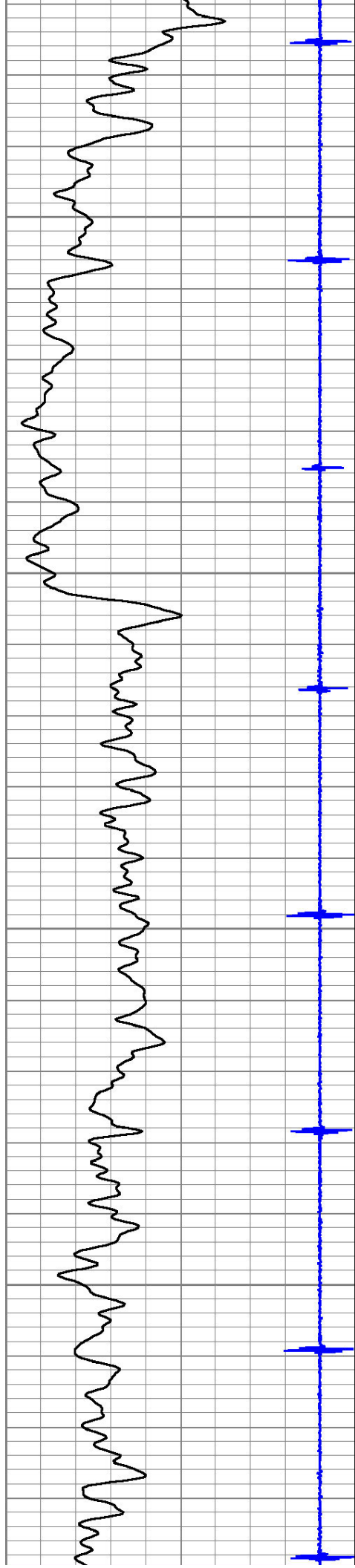
4700

4750

4800







5050

5100

5150

5200

