

# **LEGEND:**

**● PROPOSED LOCATION**



## **Encana OIL & GAS (USA) INC.**

WELL PAD E34 496  
SECTION 34, T4S, R96W, 6th P.M.  
SW 1/4 NW 1/4

SHEET 7 of 9



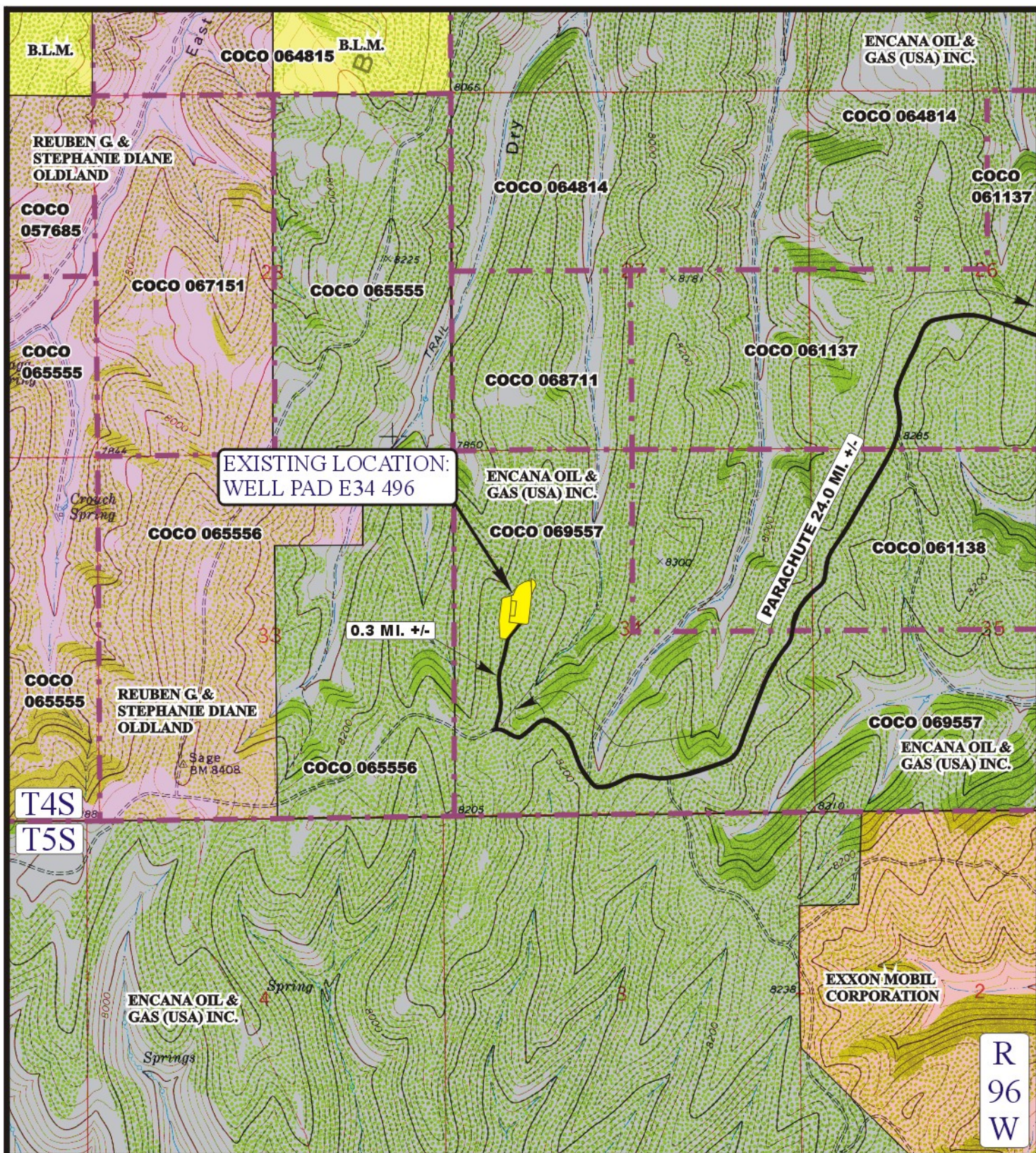
**Uintah Engineering & Land Surveying**  
85 South 200 East Vernal, Utah 84078  
(435) 789-1017 \* FAX (435) 789-1813

**ACCESS ROAD**  
**MAP**

**08** **12** **10**  
MONTH DAY YEAR

SCALE: 1:100,000 DRAWN BY: J.L.G. REVISED: 06-05-12





LEGEND:

— EXISTING ROAD



Encana OIL & GAS (USA) INC.

WELL PAD E34 496

SECTION 34, T4S, R96W, 6th P.M.

SW 1/4 NW 1/4

SHEET 8 OF 9



Uintah Engineering & Land Surveying  
85 South 200 East Vernal, Utah 84078  
(435) 789-1017 \* FAX (435) 789-1813

**ACCESS ROAD  
MAP**

**08** **12** **10**  
MONTH DAY YEAR

SCALE: 1" = 2000'

DRAWN BY: J.L.G.

REVISED: 06-05-12

**B**  
TOPO



Encana OIL & GAS (USA) INC.  
WELL PAD E34 496  
SECTION 34, T4S, R96W, 6<sup>th</sup> P.M.

PROCEED IN A NORTHWESTERLY DIRECTION FROM PARACHUTE, COLORADO ALONG COUNTY ROAD 215 APPROXIMATELY 10.8 MILES TO THE JUNCTION OF THIS ROAD AND AN EXISTING ROAD TO THE NORTHWEST; TURN LEFT AND PROCEED IN A NORTHWESTERLY DIRECTION APPROXIMATELY 10.0 MILES TO THE JUNCTION OF THIS ROAD AND AN EXISTING ROAD SOUTHWEST; TURN LEFT AND PROCEED IN A SOUTHWESTERLY, THEN NORTHWESTERLY, THEN SOUTHWESTERLY, THEN NORTHWESTERLY DIRECTION APPROXIMATELY 3.2 MILES TO THE JUNCTION OF THIS ROAD AND AN EXISTING ROAD TO THE NORTH; TURN RIGHT AND PROCEED IN A NORTHERLY, DIRECTION APPROXIMATELY 0.3 MILES TO THE EXISTING LOCATION.

TOTAL DISTANCE FROM PARACHUTE, COLORADO TO THE EXISTING WELL LOCATION IS APPROXIMATELY 24.3 MILES.