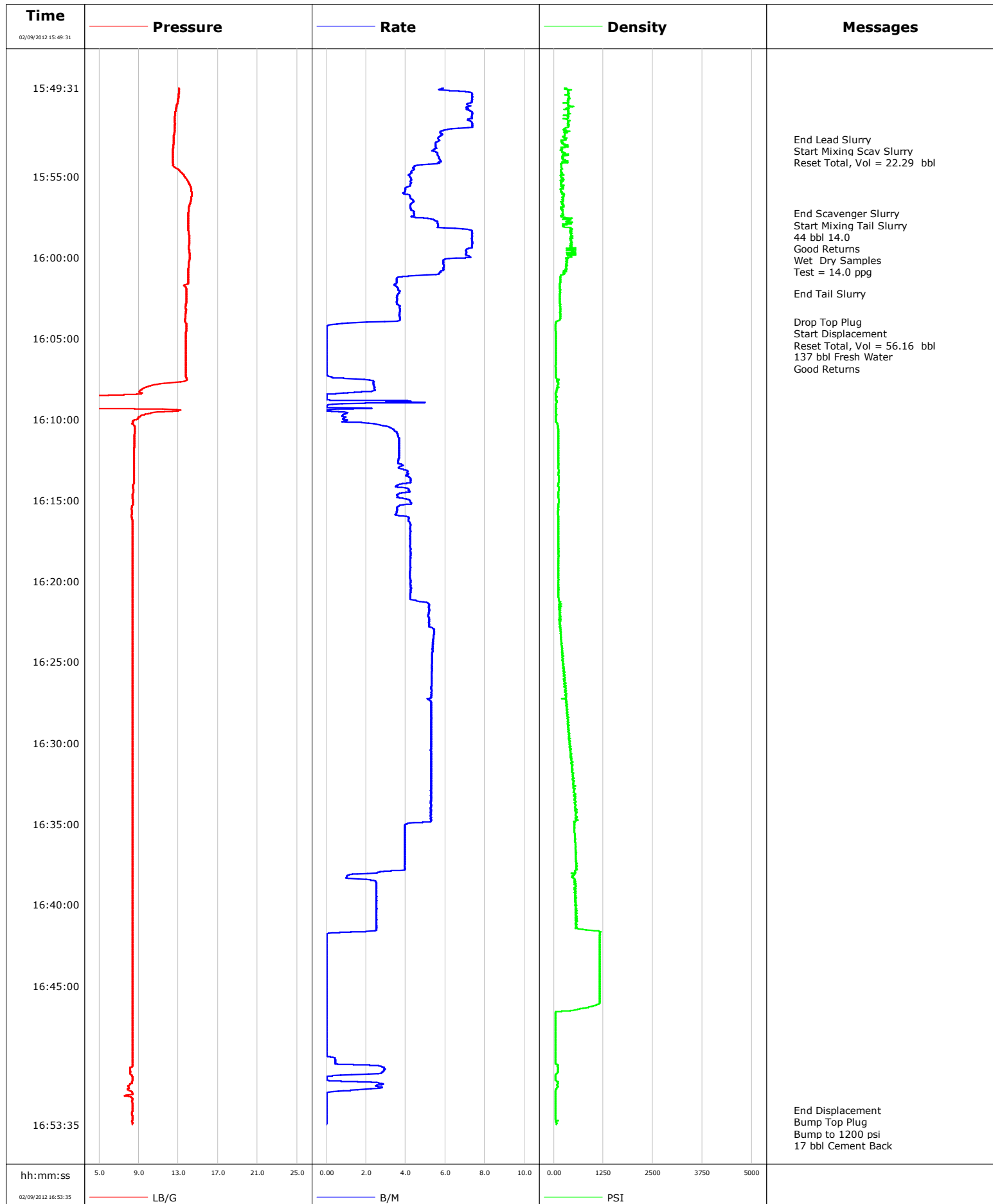
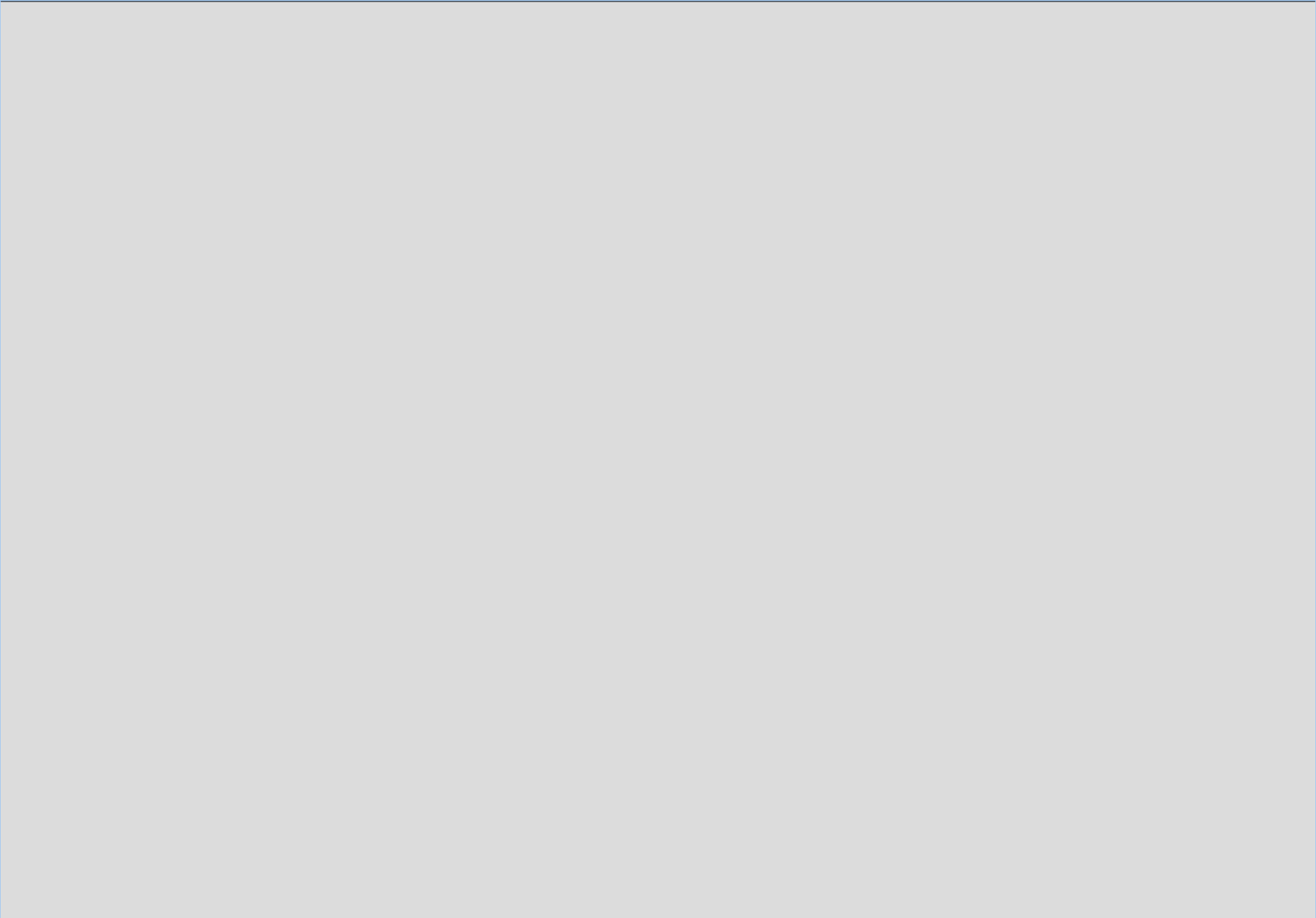


<b>Well</b>	EF16D-27	<b>Client</b>	Encana
<b>Field</b>	N Parachute	<b>SIR No.</b>	EF16D-27
<b>Engineer</b>	Jordan Moreland	<b>Job Type</b>	9 5/8 Surface
<b>Country</b>	United States	<b>Job Date</b>	02-09-2012



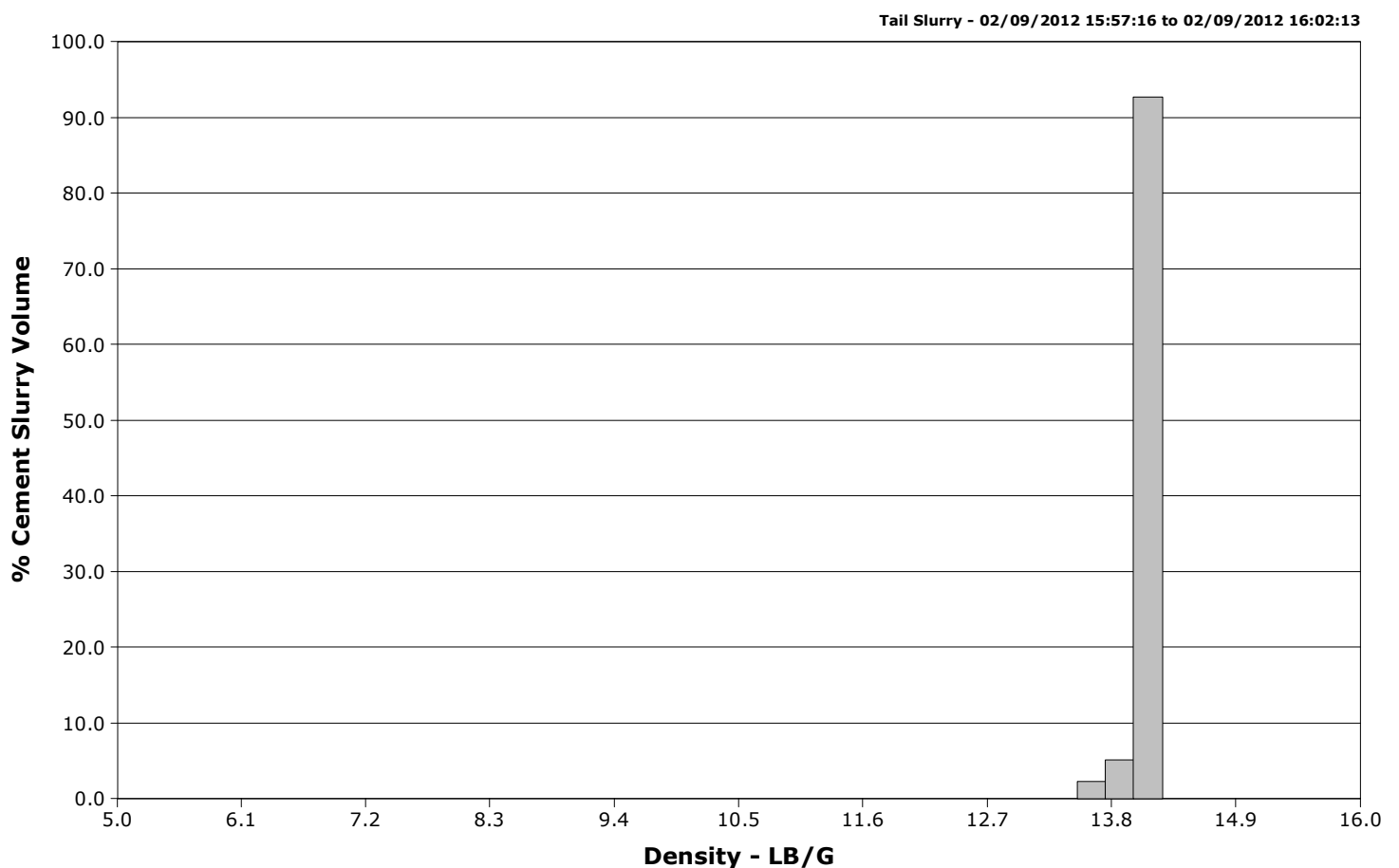
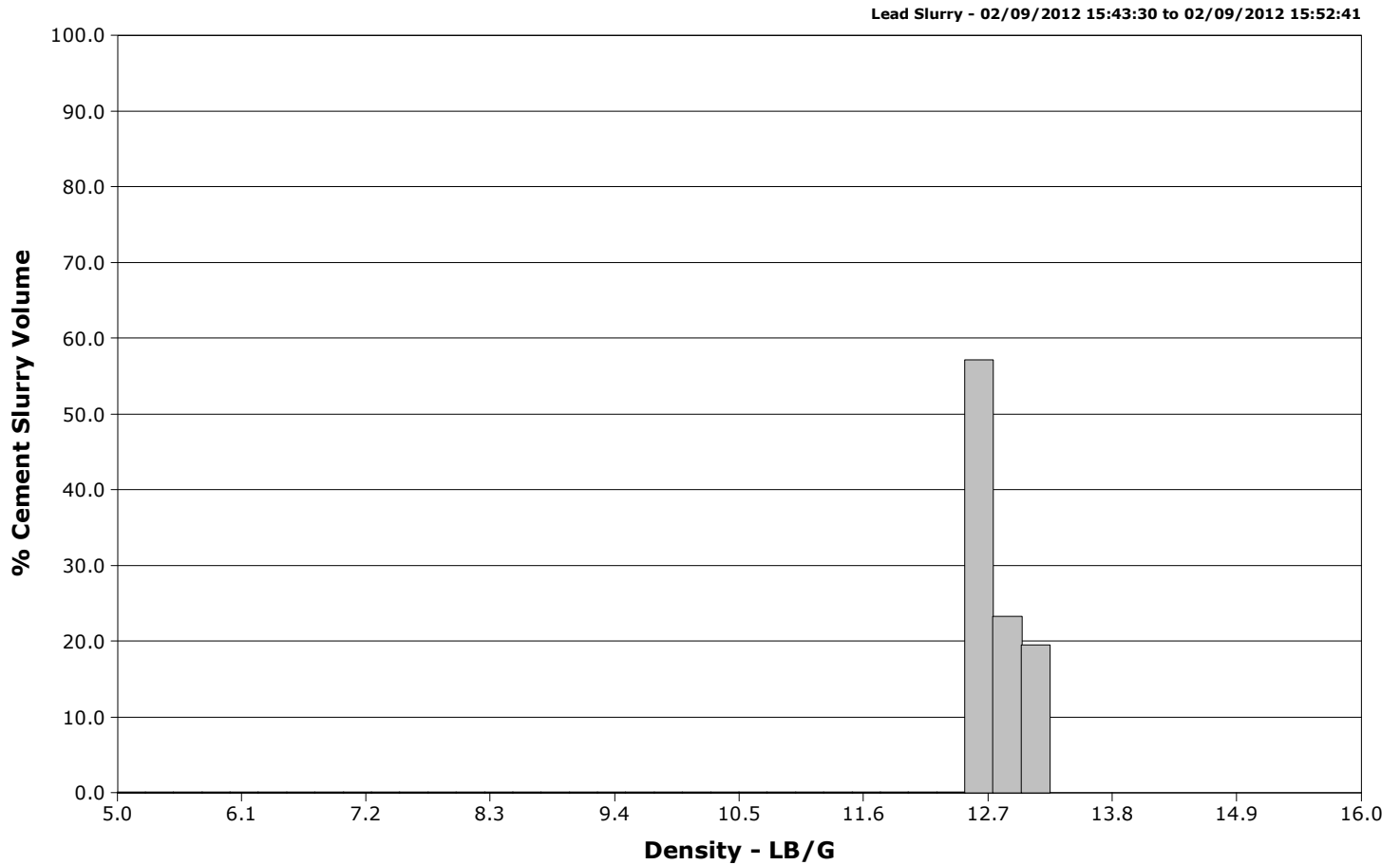
# Cementing

PRD Post Job Plot



**Well** EF16D-27  
**Field** N Parachute  
**Engineer** Jordan Moreland  
**Country** United States

**Client** Encana  
**SIR No.** EF16D-27  
**Job Type** 9 5/8 Surface  
**Job Date** 02-09-2012



				Customer Encana			Job Number EF16D-27										
Well EF16D-27			Location (legal)			Schlumberger Location GCO			Job Start Feb/09/2012								
Field N Parachute		Formation Name/Type			Deviation deg		Bit Size in		Well MD ft		Well TVD ft						
County Garfield		State/Province Colorado			BHP psi		BHST degF		BHCT degF		Pore Press. Gradient lb/gal						
Well Master 0631244197		API/UWI															
Rig Name Patterson 303		Drilled For Gas		Service Via Land		Casing/Liner											
						Depth, ft		Size, in		Weight, lb/ft		Grade		Thread			
Offshore Zone		Well Class New		Well Type Development		1818.0		9.6		36.0		J55		8RD			
						0.0		0.0		0.0							
Drilling Fluid Type Bentonite		Max. Density lb/gal		Plastic Viscosity cP		Tubing/Drill Pipe											
						T/D		Depth, ft		Size, in		Weight, lb/ft		Grade		Thread	
Service Line Cementing		Job Type 9 5/8 Surface															
Max. Allowed Tub. Press psi		Max. Allowed Ann. Press psi		WH Connection Single Cement head		Perforations/Open Hole											
						Top, ft		Bottom, ft		shot/ft		No. of Shots		Total Interval ft			
Service Instructions 272 sks 12.5 ppg G Lead 159 sks 14.0 ppg G Tail						ft		ft									
						ft		ft						Diameter in			
						ft		ft									
						Treat Down Casing		Displacement 137.0 bbl		Packer Type		Packer Depth ft					
						Tubing Vol. bbl		Casing Vol. 139.0 bbl		Annular Vol. 111.0 bbl		Openhole Vol. 261.0 bbl					
Casing/Tubing Secured <input checked="" type="checkbox"/>		1 Hole Vol. Circulated prior to Cement <input checked="" type="checkbox"/>		Casing Tools				Squeeze Job									
Lift Pressure psi				Shoe Type Guide				Squeeze Type									
Pipe Rotated <input type="checkbox"/>		Pipe Reciprocated <input type="checkbox"/>		Shoe Depth 1818.0 ft				Tool Type									
No. Centralizers		Top Plugs 1		Bottom Plugs		Stage Tool Type				Tool Depth ft							
Cement Head Type Single				Stage Tool Depth ft				Tail Pipe Size in									
Job Scheduled For Feb/09/2012		Arrived on Location Feb/09/2012		Leave Location Feb/09/2012		Collar Type Float				Tail Pipe Depth ft							
						Collar Depth 1773.0 ft				Sqz. Total Vol. bbl							
Date	Time 24-hr clock	Treating Pressure PSI	Flow Rate B/M	Density LB/G	Volume BBL	Message											
02/09/2012	15:49:31	276	5.9	13.06	91.1	Started Acquisition											
02/09/2012	15:51:31	358	7.1	12.63	105.4												
02/09/2012	15:52:41	276	5.7	12.51	113.0	End Lead Slurry											
02/09/2012	15:52:43	313	5.7	12.51	113.1	Start Mixing Scav Slurry											
02/09/2012	15:52:45	195	5.7	12.51	113.3	Reset Total, Vol = 22.29 bbl											
02/09/2012	15:53:31	219	5.6	12.41	117.6												
02/09/2012	15:55:31	201	4.2	14.15	127.2												
02/09/2012	15:57:16	223	4.4	14.02	134.5	End Scavenger Slurry											
02/09/2012	15:57:23	237	4.4	14.01	135.1	44 bbl 14.0											
02/09/2012	15:57:24	237	4.4	14.01	135.1	Good Returns											
02/09/2012	15:57:31	294	4.5	14.01	135.6												
02/09/2012	15:59:31	346	7.1	14.07	149.0												
02/09/2012	16:01:31	164	3.5	14.00	160.5												
02/09/2012	16:02:13	156	3.7	13.81	163.0	End Tail Slurry											
02/09/2012	16:03:31	160	3.7	13.69	167.7												
02/09/2012	16:03:58	73	2.9	13.66	169.4	Drop Top Plug											
02/09/2012	16:04:00	62	2.0	13.69	169.5	Start Displacement											
02/09/2012	16:04:02	58	1.5	13.73	169.6	Reset Total, Vol = 56.16 bbl											
02/09/2012	16:05:31	51	0.0	13.74	169.7												
02/09/2012	16:07:31	109	1.5	13.85	169.8												
02/09/2012	16:09:31	55	0.3	12.40	172.7												

Well EF16D-27			Field N Parachute		Job Start Feb/09/2012		Customer Encana		Job Number EF16D-27	
Date	Time 24-hr clock	Treating Pressure PSI		Flow Rate B/M	Density LB/G		Volume BBL		Message	
02/09/2012	16:13:31	128		4.1	8.52		185.1			
02/09/2012	16:15:31	110		3.6	8.28		193.1			
02/09/2012	16:17:31	119		4.2	8.35		201.2			
02/09/2012	16:19:31	121		4.2	8.34		209.6			
02/09/2012	16:21:31	170		5.2	8.34		218.3			
02/09/2012	16:23:31	181		5.4	8.34		228.8			
02/09/2012	16:25:31	254		5.3	8.34		239.5			
02/09/2012	16:27:31	302		5.3	8.34		250.1			
02/09/2012	16:29:31	381		5.3	8.34		260.7			
02/09/2012	16:31:31	462		5.3	8.34		271.2			
02/09/2012	16:33:31	516		5.3	8.34		281.8			
02/09/2012	16:35:31	535		4.0	8.34		291.6			
02/09/2012	16:37:31	576		3.9	8.34		299.5			
02/09/2012	16:39:31	529		2.5	8.34		304.6			
02/09/2012	16:41:31	726		2.5	8.34		309.7			
02/09/2012	16:43:31	1156		0.0	8.34		310.2			
02/09/2012	16:45:31	1155		0.0	8.35		310.2			
02/09/2012	16:47:31	40		0.0	8.35		310.2			
02/09/2012	16:49:31	45		0.4	8.35		310.2			
02/09/2012	16:51:31	48		0.6	8.22		313.5			
02/09/2012	16:52:42	41		0.0	8.34		313.6		End Displacement	
02/09/2012	16:52:43	41		0.0	8.34		313.6		Bump Top Plug	
02/09/2012	16:52:44	41		0.0	8.34		313.6		Bump to 1200 psi	
02/09/2012	16:52:45	41		0.0	8.34		313.6		Bleed Off Check Floats	

### Post Job Summary

Average Pump Rates, bbl/min					Volume of Fluid Injected, bbl						
Slurry 4.4	N2	Mud	Maximum Rate 7.4		Total Slurry 222.4	Mud 0.0	Spacer 0.0	N2			
Treating Pressure Summary, psi					Breakdown Fluid						
Maximum 1178	Final 75	Average 313	Bump Plug to	Breakdown	Type	Volume bbl	Density lb/gal				
Avg. N2 Percent %	Designed Slurry Volume 0.0 bbl		Displacement 144.1 bbl	Mix Water Temp 65 degF	Cement Circulated to Surface? <input checked="" type="checkbox"/>		Volume bbl				
					Washed Thru Perfs <input type="checkbox"/>		To ft				
Customer or Authorized Representative Floyd Roberts			Schlumberger Supervisor Jordan Moreland			Circulation Lost <input type="checkbox"/>	Job Completed <input checked="" type="checkbox"/>				
						-	-				