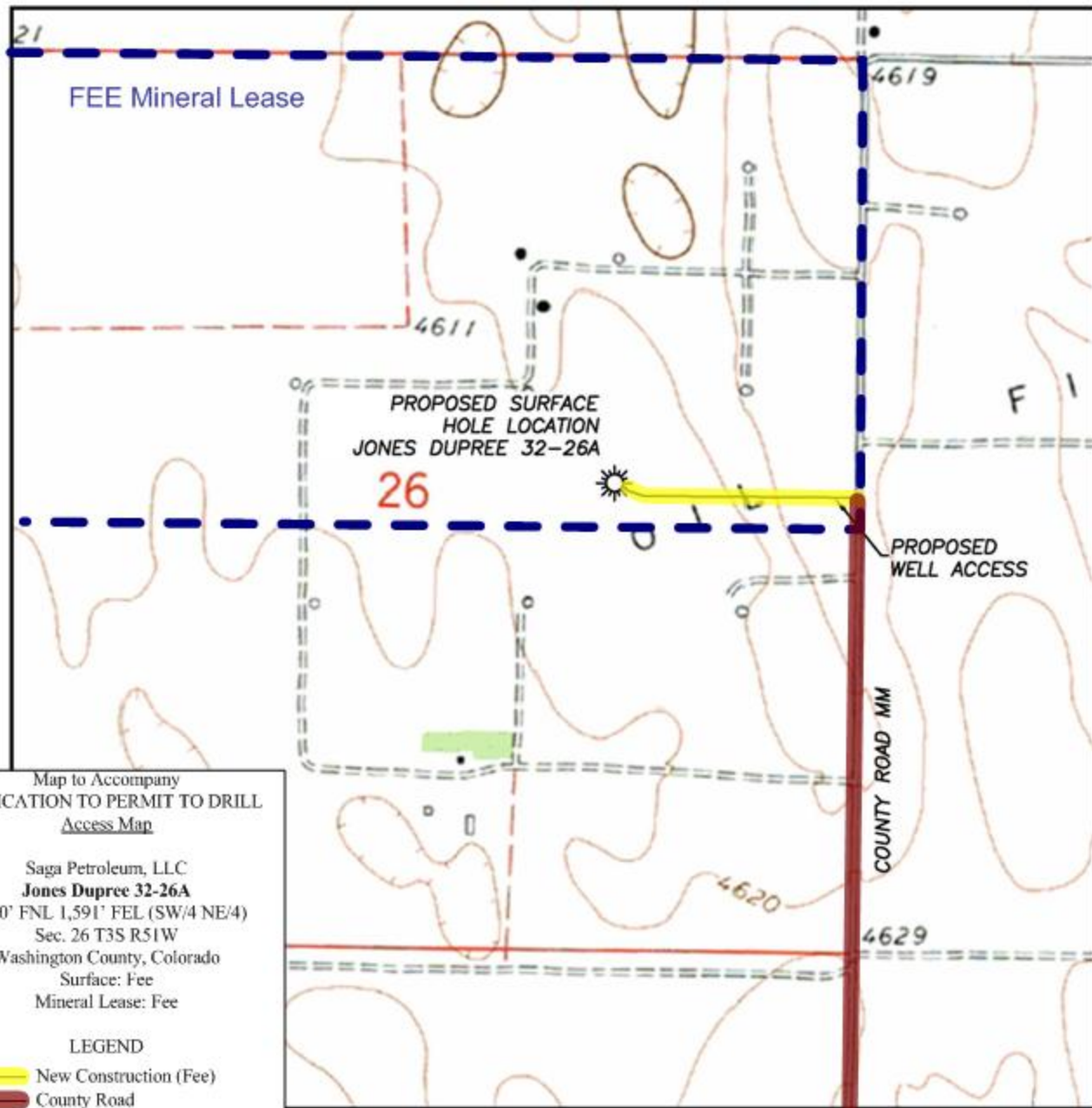


PROPOSED WELL ACCESS  
JONES DUPREE 32-26A

SECTION 26, TOWNSHIP 3 SOUTH, RANGE 51 WEST OF THE 6TH PRINCIPAL MERIDIAN



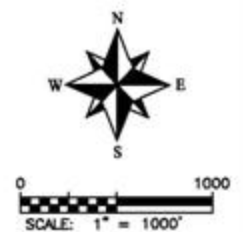
Map to Accompany  
APPLICATION TO PERMIT TO DRILL  
Access Map

Saga Petroleum, LLC  
**Jones Dupree 32-26A**  
 2,490' FNL 1,591' FEL (SW/4 NE/4)  
 Sec. 26 T3S R51W  
 Washington County, Colorado  
 Surface: Fee  
 Mineral Lease: Fee

### LEGEND

-  New Construction (Fee)  
 County Road

Revised by Banko Petroleum Management, Inc.



DALEY LAND SURVEYING, INC.

PARKER, CO. 80134

303 953 9841

## AREA ROAD MAP JONES DUPREE 32-26A

SECTION 26, TOWNSHIP 3 SOUTH, RANGE 51 WEST OF THE 6TH PRINCIPAL MERIDIAN

Map to Accompany  
APPLICATION FOR PERMIT TO DRILL  
Area Map

Saga Petroleum, LLC  
**Jones Dupree 32-26A**  
2,490' FNL 1,591' FEL (SW/4 NE/4)  
Sec. 26 T3S R51W  
Washington County, Colorado  
Surface: Fee  
Mineral Lease: Fee

### LEGEND

- New Construction (Fee)
- County Road
- State Highway 36

Revised by Banko Petroleum Management, Inc.

