

The Road to Excellence Starts with Safety

Sold To #: 300721		Ship To #: 2934684		Quote #:		Sales Order #: 9608538	
Customer: WPX ENERGY ROCKY MOUNTAIN LLC-EBUS				Customer Rep: Hartl, Al			
Well Name: RWF		Well #: 342-34		API/UWI #: 05-045-20457			
Field: RULISON		City (SAP): RIFLE		County/Parish: Garfield		State: Colorado	
Lat: N 39.483 deg. OR N 39 deg. 29 min. 0.323 secs.				Long: W 107.863 deg. OR W -108 deg. 8 min. 13.524 secs.			
Contractor: NABORS 576		Rig/Platform Name/Num: NABORS 576					
Job Purpose: Cement Surface Casing							
Well Type: Development Well				Job Type: Cement Surface Casing			
Sales Person: MAYO, MARK		Srvs Supervisor: ERIC CARTER		MBU ID Emp #: 345598			
Job Personnel							
HES Emp Name	Exp Hrs	Emp #	HES Emp Name	Exp Hrs	Emp #	HES Emp Name	Exp Hrs
BORSZICH, STEPHEN A	9	412388	CARTER, ERIC Earl	9.5	345598	ROSE, BENJAMIN Keith	9.5
SILVERTHORN, AARON Jacob	9.5	491305					
Equipment							
HES Unit #	Distance-1 way	HES Unit #	Distance-1 way	HES Unit #	Distance-1 way	HES Unit #	Distance-1 way
10025118	60 mile	10533645	60 mile	10616651C	60 mile	11139328	60 mile
11259885	60 mile	11360881	60 mile	11808827	60 mile		
Job Hours							
Date	On Location Hours	Operating Hours	Date	On Location Hours	Operating Hours	Date	On Location Hours
7/5/12	8	.5	7/6/12	.5			
TOTAL		Total is the sum of each column separately					
Job				Job Times			
Formation Name				Date	Time	Time Zone	
Formation Depth (MD)	Top	0 FT.	Bottom	1120 FT.	Called Out	05 - Jul - 2012	12:00
Form Type	BHST			On Location	05 - Jul - 2012	16:00	MST
Job depth MD	1121. ft	Job Depth TVD	1121. ft	Job Started	05 - Jul - 2012	23:38	MST
Water Depth	Wk Ht Above Floor			5. ft	Job Completed	06 - Jul - 2012	00:33
Perforation Depth (MD)	From	To			Departed Loc	06 - Jul - 2012	01:30
Well Data							
Description	New / Used	Max pressure psig	Size in	ID in	Weight lbm/ft	Thread	Grade
OPEN HOLE				13.5			
SURFACE CASING	Unknown		9.625	9.001	32.3		H-40
Sales/Rental/3 rd Party (HES)							
Description	Qty	Qty uom	Depth	Supplier			
R/A DENSOMETER W/CHART RECORDER,/JOB,ZI	1	JOB					
PORT. DATA ACQUIS. W/OPTICEM RT W/HES	1	EA					
ADC (AUTO DENSITY CTRL) SYS, /JOB,ZI	1	JOB					
PLUG,CMTG,TOP,9 5/8,HWE,8.16 MIN/9.06 MA	1	EA					
Tools and Accessories							
Type	Size	Qty	Make	Depth	Type	Size	Qty
Guide Shoe					Packer		
Float Shoe					Bridge Plug		
Float Collar					Retainer		
Insert Float							
Stage Tool							

Miscellaneous Materials													
Gelling Agt		Conc		Surfactant		Conc		Acid Type		Qty		Conc	%
Treatment Fld		Conc		Inhibitor		Conc		Sand Type		Size		Qty	
Fluid Data													
Stage/Plug #: 1													
Fluid #	Stage Type	Fluid Name			Qty	Qty uom	Mixing Density lbm/gal	Yield ft ³ /sk	Mix Fluid Gal/sk	Rate bbl/min	Total Mix Fluid Gal/sk		
1	Fresh Water				20.00	bbl	8.33	.0	.0	4			
2	VersaCem Lead	VERSACEM (TM) SYSTEM (452010)			180.0	sacks	12.3	2.38	13.75	8	13.75		
		13.75 Gal FRESH WATER											
3	VersaCem Tail	VERSACEM (TM) SYSTEM (452010)			180.0	sacks	12.8	2.11	11.75	8	11.75		
		11.75 Gal FRESH WATER											
4	Displacement Fluid				86.90	bbl	8.34	.0	.0	10			
Calculated Values				Pressures				Volumes					
Displacement	86.9	Shut In: Instant			Lost Returns	NONE	Cement Slurry		143.9	Pad			
Top Of Cement	SURFACE	5 Min			Cement Returns	40	Actual Displacement		86.9	Treatment			
Frac Gradient		15 Min			Spacers	20	Load and Breakdown			Total Job	250.8		
Rates													
Circulating	RIG	Mixing		8	Displacement	10	Avg. Job		9				
Cement Left In Pipe	Amount	44.5 ft	Reason	Shoe Joint									
Frac Ring # 1 @	ID	Frac ring # 2 @	ID	Frac Ring # 3 @	ID	Frac Ring # 4 @	ID						
The Information Stated Herein Is Correct					Customer Representative Signature								

The Road to Excellence Starts with Safety

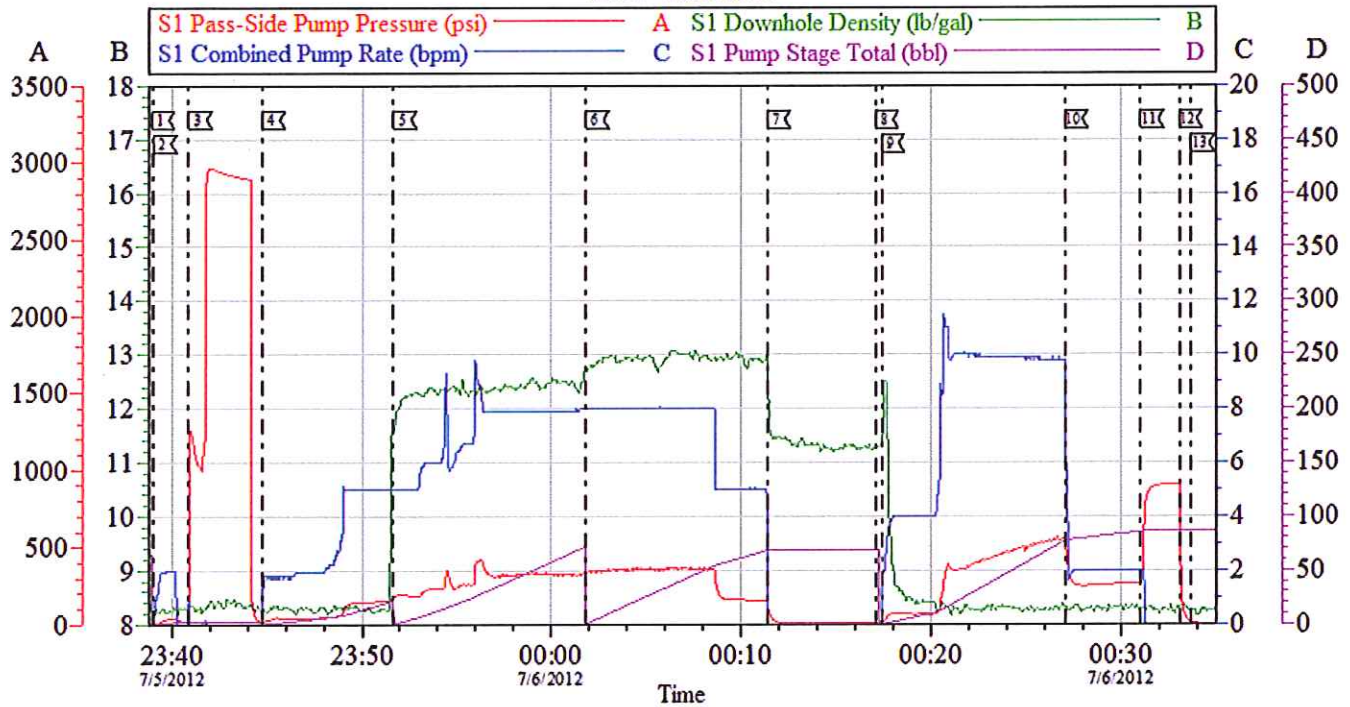
Sold To #: 300721	Ship To #: 2934684	Quote #:	Sales Order #: 9608538
Customer: WPX ENERGY ROCKY MOUNTAIN LLC-EBUS	Customer Rep: Hartl, Al		
Well Name: RWF	Well #: 342-34	API/UWI #: 05-045-20457	
Field: RULISON	City (SAP): RIFLE	County/Parish: Garfield	State: Colorado
Legal Description:			
Lat: N 39.483 deg. OR N 39 deg. 29 min. 0.323 secs.		Long: W 107.863 deg. OR W -108 deg. 8 min. 13.524 secs.	
Contractor: NABORS 576	Rig/Platform Name/Num: NABORS 576		
Job Purpose: Cement Surface Casing		Ticket Amount:	
Well Type: Development Well	Job Type: Cement Surface Casing		
Sales Person: MAYO, MARK	Srv Supervisor: ERIC CARTER	MBU ID Emp #:	345598

Activity Description	Date/Time	Cht #	Rate bbl/min	Volume bbl		Pressure psig		Comments
				Stage	Total	Tubing	Casing	
Call Out	07/05/2012 12:00							
Depart Yard Safety Meeting	07/05/2012 13:50							ATTENDED BY ALL HES CREW
Crew Leave Yard	07/05/2012 14:30							
Arrive At Loc	07/05/2012 16:00							RIG PULLING DRILL PIPE
Assessment Of Location Safety Meeting	07/05/2012 16:10							ATTENDED BY ALL HES CREW
Other	07/05/2012 22:10							SPOT EQUIPMENT
Pre-Rig Up Safety Meeting	07/05/2012 22:20							ATTENDED BY ALL HES CREW
Rig-Up Equipment	07/05/2012 22:30							
Pre-Job Safety Meeting	07/05/2012 23:10							ATTENDED BY ALL HES CREW, RIG CREW AND COMPANY REP
Start Job	07/05/2012 23:38							TP 1149' WITH 28' LANDING JOINT, TD 1170, SJ 44.49', FC 1104.51', MW 10.1 PPG, CASING 9.625", 32.3#, H-40, HOLE 13.5", RIG CIRCULATED 1 HR PRIOR TO JOB
Other	07/05/2012 23:39		2	2			45.0	FILL LINES
Test Lines	07/05/2012 23:40							PRESSURED UP TO 2995 PSI, PRESSURE HELD
Pump Spacer 1	07/05/2012 23:44		4	20			160.0	FRESH WATER

Activity Description	Date/Time	Cht #	Rate bbl/min	Volume bbl		Pressure psig		Comments
				Stage	Total	Tubing	Casing	
Pump Lead Cement	07/05/2012 23:51		8	76.3			340.0	180 SKS VERSACEM MIXED AT 12.3 PPG, 2.38 YIELD, 13.75 GL/SK
Pump Tail Cement	07/06/2012 00:01		8	67.6			360.0	180 SKS VERSACEM MIXED AT 12.8 PPG, 2.11 YIELD, 11.75 GL/SK
Shutdown	07/06/2012 00:11							
Drop Top Plug	07/06/2012 00:17							COMPANY REP VERIFIED THAT PLUG LAUNCHED
Pump Displacement	07/06/2012 00:17		10	76.9			550.0	FRESH WATER, WASHED UP ON TOP OF PLUG AT COMPANY REP'S REQUEST
Slow Rate	07/06/2012 00:27		2	10			265.0	
Bump Plug	07/06/2012 00:31						902.0	PLUG LANDED
Check Floats	07/06/2012 00:33							FLOATS HELD
End Job	07/06/2012 00:33							GOOD CIRCULATION THROUGH OUT JOB, 40 BBLS CEMENT TO SURFACE, PIPE WAS NOT MOVED DURING JOB
Post-Job Safety Meeting (Pre Rig-Down)	07/06/2012 00:40							ATTENDED BY ALL HES CREW
Rig-Down Equipment	07/06/2012 00:50							
Depart Location Safety Meeting	07/06/2012 01:20							ATTENDED BY ALL HES CREW
Crew Leave Location	07/06/2012 01:30							THANK YOU FOR USING HALLIBURTON CEMENT, ERIC CARTER AND CREW.

WPX--RWF-342-34

9.625" SURFACE



Local Event Log

1 START JOB	7/5/2012 23:38:55	2 FILL LINES	7/5/2012 23:39:03	3 TEST LINES	7/5/2012 23:40:54
4 PUMP H2O SPACER	7/5/2012 23:44:45	5 PUMP LEAD CEMENT	7/5/2012 23:51:40	6 PUMP TAIL CEMENT	7/6/2012 00:01:50
7 SHUTDOWN	7/6/2012 00:11:22	8 DROP TOP PLUG	7/6/2012 00:17:05	9 PUMP H2O DISPLACEMENT	7/6/2012 00:17:23
10 SLOW RATE	7/6/2012 00:27:04	11 BUMP PLUG	7/6/2012 00:31:03	12 CHECK FLOATS	7/6/2012 00:33:04
13 END JOB	7/6/2012 00:33:43				

Customer: WPX ENERGY ROCKY MOUNTAIN LLC-EBUS
Well Description: RWF 342-34
Company Rep:

Job Date: 05-Jul-2012
Job Type: 05-045-20457
Cement Supervisor:

Sales Order #: 9608538
ADC Used:
Elite # Operator:

OptiCem v6.4.0
06-Jul-12 00:52