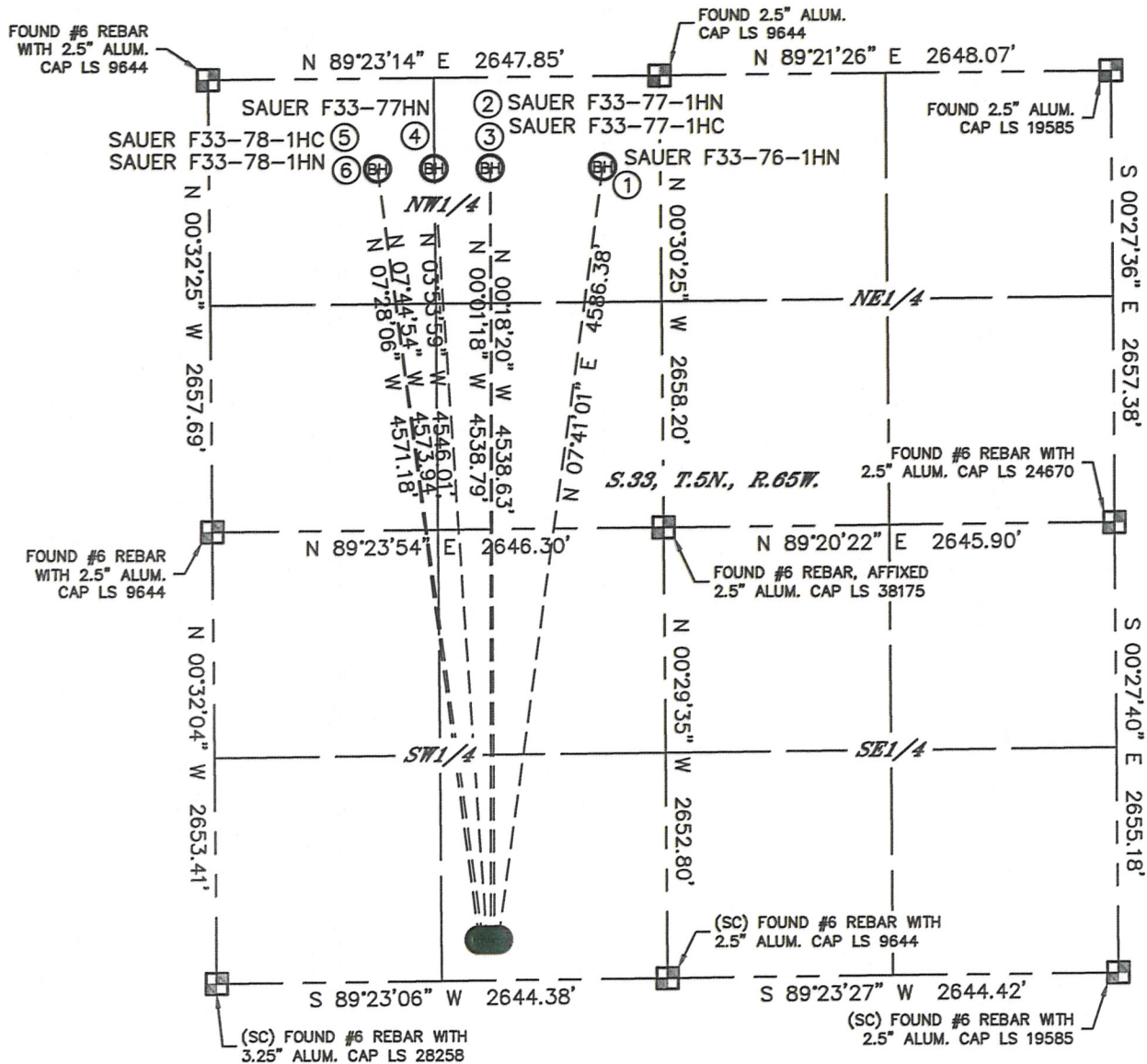


MULTI-WELL PLAN

SAUER F33 PAD

THIS MAP DOES NOT REPRESENT A BOUNDARY SURVEY

SECTION: 33
TOWNSHIP: 5N
RANGE: 65W



①

-BOTTOM HOLE-
SAUER F33-76-1HN
535' FNL
2310' FWL
LAT-40.36159°N
LONG-104.66957°W

②

-BOTTOM HOLE-
SAUER F33-77-1HN
535' FNL
1650' FWL
LAT-40.36159°N
LONG-104.67194°W

③

-BOTTOM HOLE-
SAUER F33-77-1HC
535' FNL
1650' FWL
LAT-40.36159°N
LONG-104.67194°W

④

-BOTTOM HOLE-
SAUER F33-77HN
535' FNL
1320' FWL
LAT-40.36159°N
LONG-104.67312°W

⑤

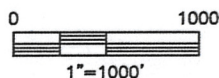
-BOTTOM HOLE-
SAUER F33-78-1HC
535' FNL
990' FWL
LAT-40.36158°N
LONG-104.67431°W

⑥

-BOTTOM HOLE-
SAUER F33-78-1HN
535' FNL
990' FWL
LAT-40.36158°N
LONG-104.67431°W

LEGEND

- = ALIQUOT MONUMENT AS DESCRIBED
- = CALCULATED POSITION



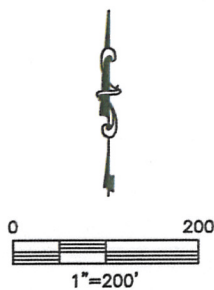
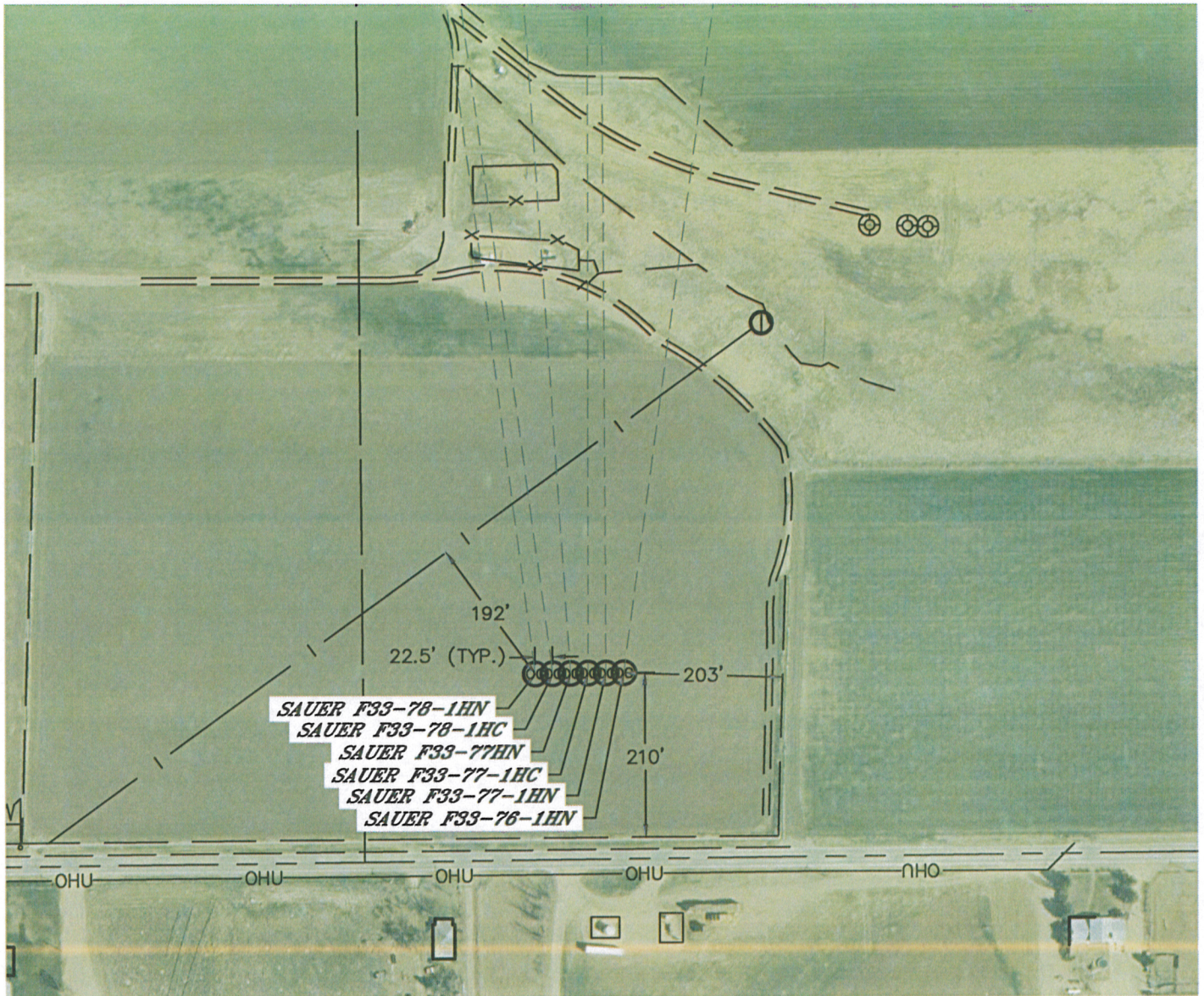
DATE: 9/27/2012
PROJECT#: 2011334

Lat40°, Inc. 1635 Foxtrail Drive, Suite 325 Loveland, CO 970-776-3321

MULTI-WELL PLAN

SAUER F33 PAD

SECTION: 33
TOWNSHIP: 5N
RANGE: 65W



DATE: 9/27/2012
PROJECT#: 2011334