



Cement Bond, V.D.L.
Gamma-Ray & C.C.L.

Pioneer Energy Services

Company	Wiepking-Fullerton Energy LLC
Well	Mahalo #8
Field	Great Plains
County	Lincoln
State	Colo

Company	Wiepking-Fullerton Energy LLC
Well	Mahalo #8
Field	Great Plains
County	Lincoln
	State
	Colorado

Location: 2080' FSL & 1980' FWL NE SW SEC 29 TWP 10S RGE 55W	Other Services
	PERF.
Permanent Datum GL Elevation 5199 Log Measured From KB Drilling Measured From KB	KB. 5212 D.F. 5211 G.L. 5199

Date _____

	10-12-12		

Depth Driller

	7900		

Bottom Logged Int

7834			
7834			

Open Hole Size

[illegible]

Type Fluid

Max. Recorded Te

np.	200		
-----	-----	--	--

Time Well Ready

ROA		

Equipment Number

[illegible]

Recorded By

I. I. MORGAN		
NATHAN BIVENS		

Witnessed By _____

RAY BROWN		
-----------	--	--

Run Number	
1	

From	To	Size	Weight	From	To
------	----	------	--------	------	----

[illegible]

[illegible]

Surface String

Production String

5.5"	15.5		

1130


<<< Fold Here >>>

All interpretations are opinions based on inferences from electrical or other measurements and we cannot and do not guarantee the accuracy or correctness of any interpretation, and we shall not, except in the case of gross or willful negligence on our part, be liable or responsible for any loss, costs, damages, or expenses incurred or sustained by anyone resulting from any interpretation made by any of our officers, agents or employees. These interpretations are also subject to our general terms and conditions set out in our current Price Schedule.

Comments

S.O. # 2-203375

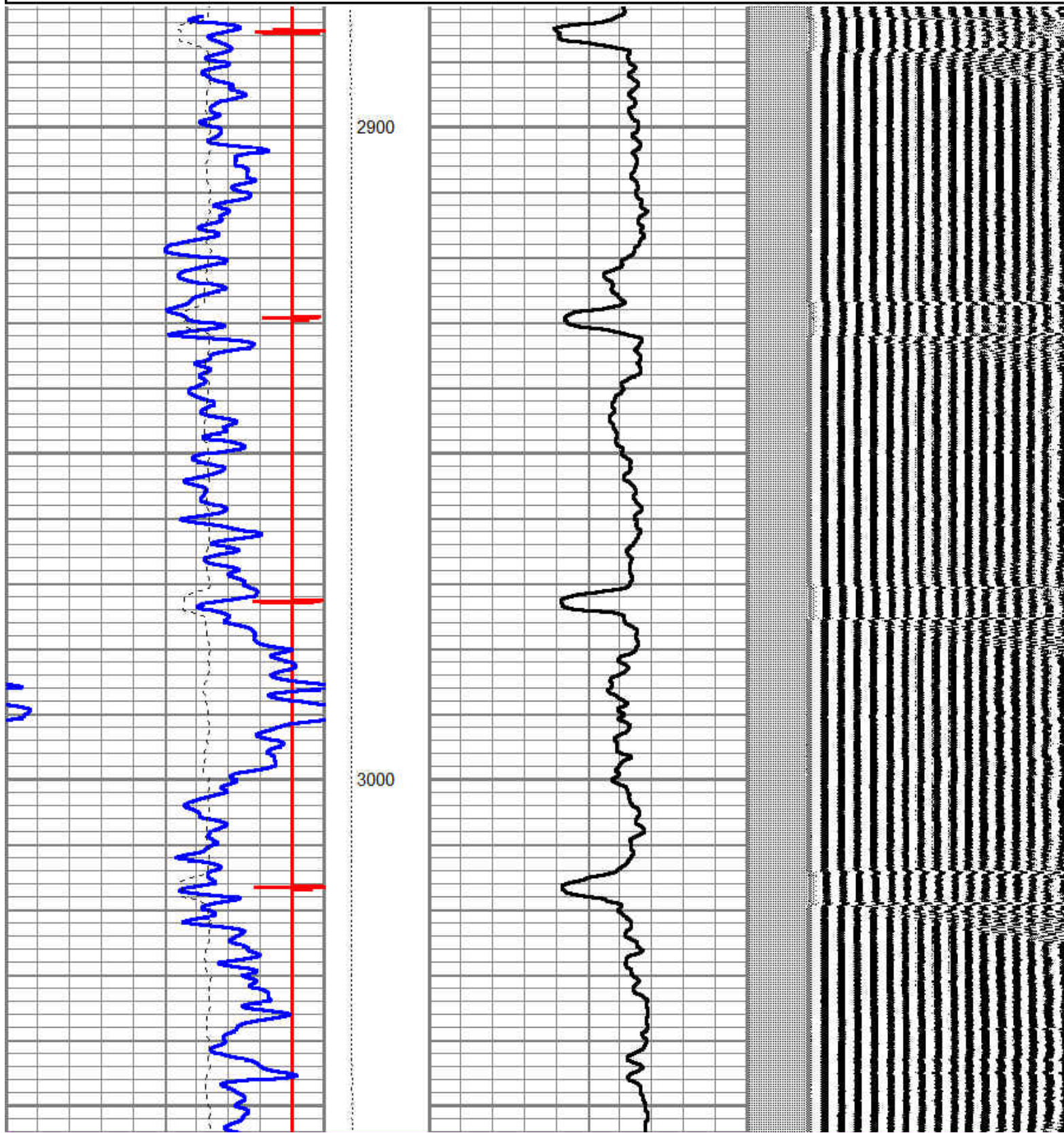
THANK YOU FOR USING PIONEER ENERGY SERVICES

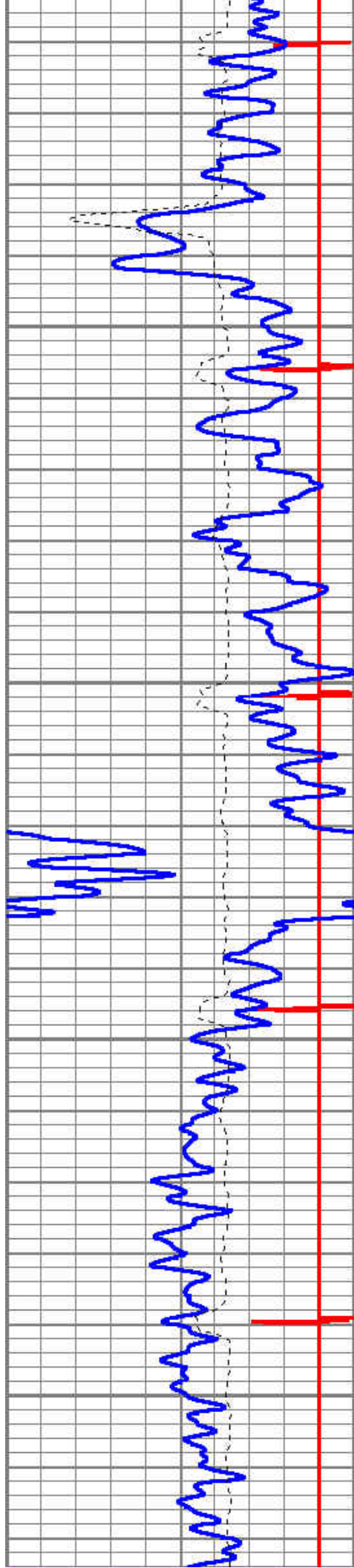
Sensor	Offset (ft)	Schematic	Description	Len (ft)	OD (in)	Wt (lb)
			SDSCHD Cable Head for Testing	1.00	1.44	1.00

			cent.-Probe (cent) probe cent	2.88	2.75	25.00
WVF3	12.48					
WVF5	11.48		CBL-Probe (110215) 2.75 digital probe	8.75	2.75	106.50
			cent.-Probe (cent) probe cent	2.88	2.75	25.00
CCL	4.13		CCL-Probe (081119)	2.02	2.75	
GR	0.79		GR-Probe275dig (110249) Probe Digital Gamma-Ray	3.33	2.75	57.00
Dataset: mahalo #8.db: field/well/run1/pass5 Total Length: 20.85 ft Total Weight: 214.50 lb O.D.: 2.75 in						

Database File: mahalo #8.db
 Dataset Pathname: pass5
 Presentation Format: cbl_dr
 Dataset Creation: Fri Oct 12 09:27:40 2012 by Calc SCH 120430
 Charted by: Depth in Feet scaled 1:240

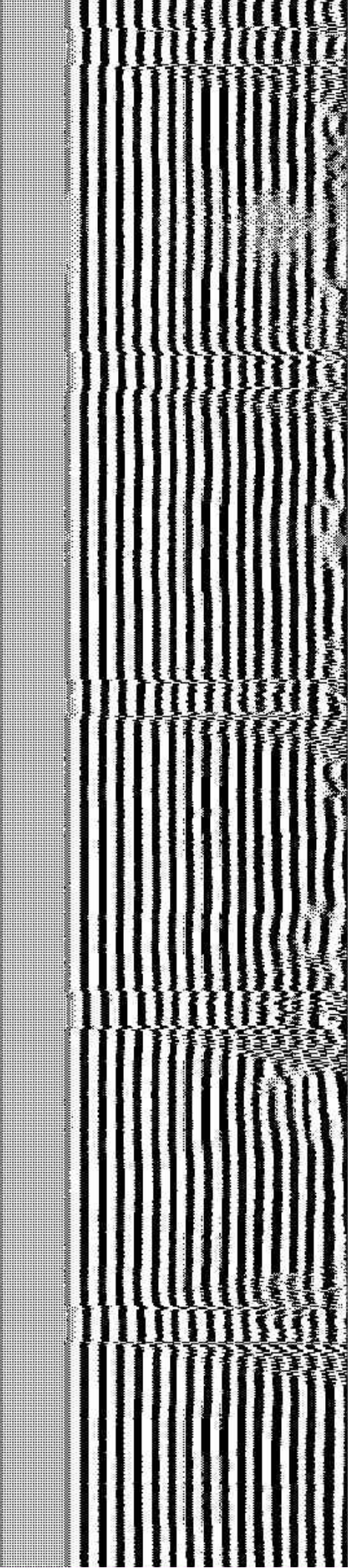
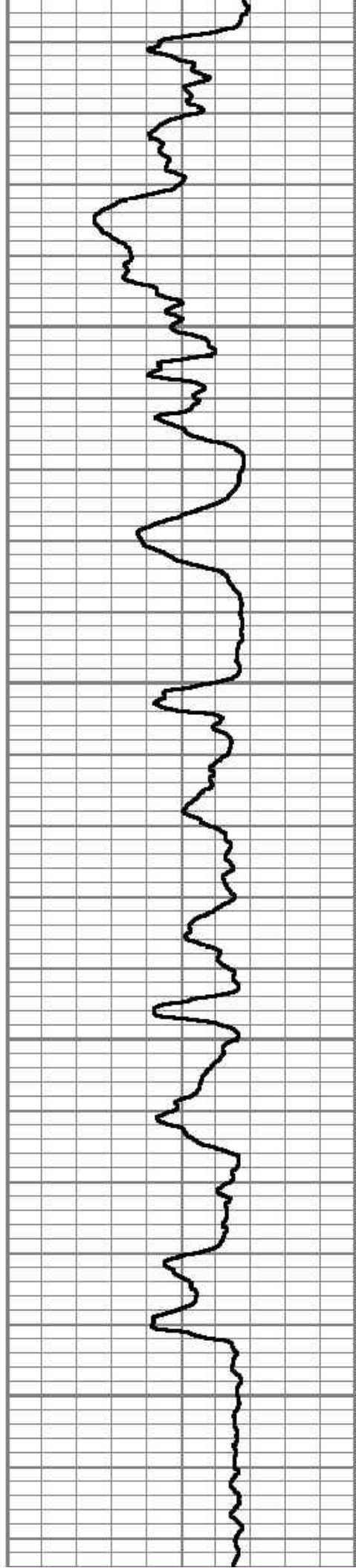
9	Collar Locator	-1	LTEN	0	Amplified Amplitude (mV)	10	200	Variable Density	1200
0	Gamma Ray (GAPI)	150	0 (lb/1000)	0	Amplitude (mV)	100			
333	TT3 (usec)	233							

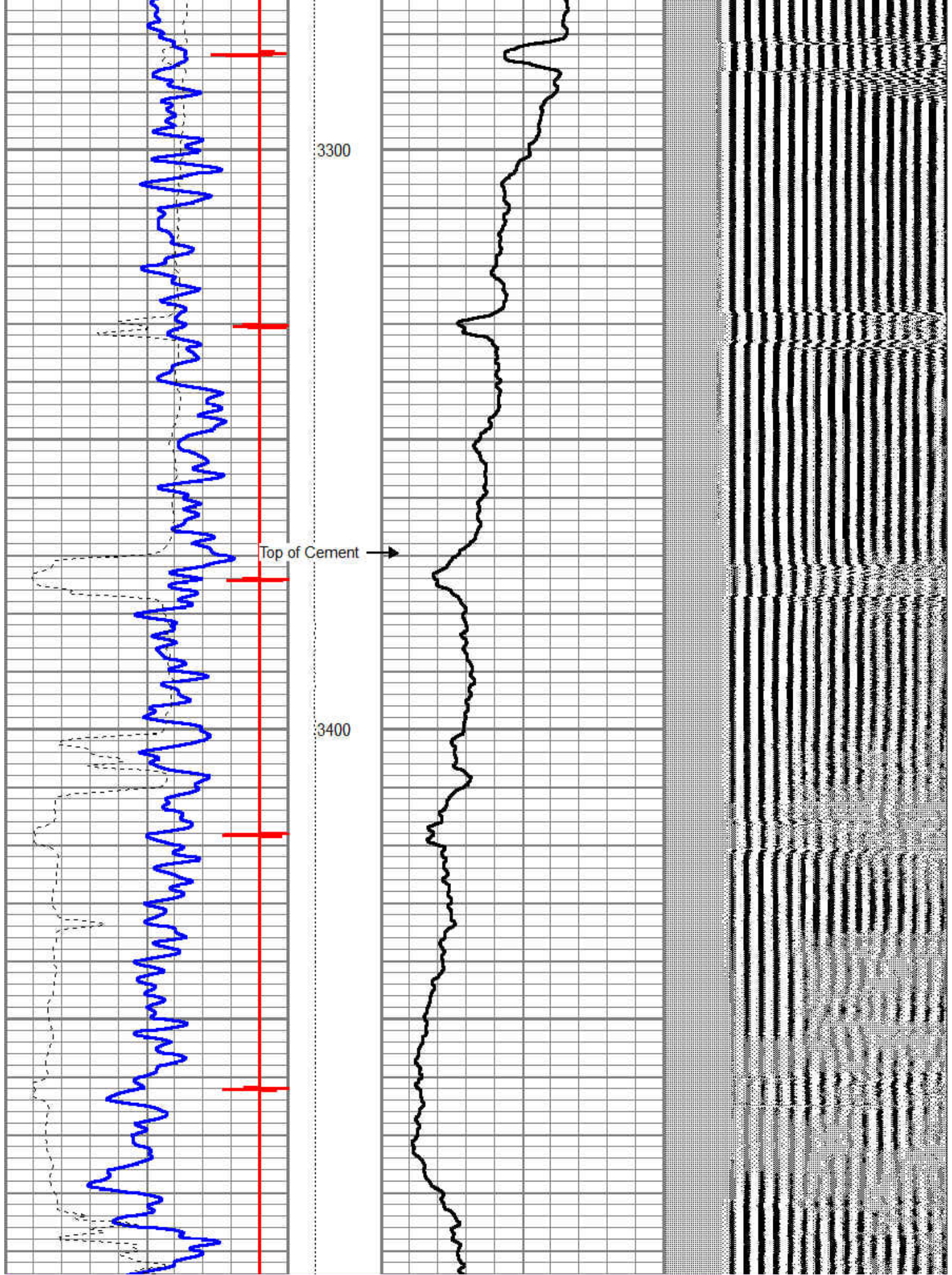


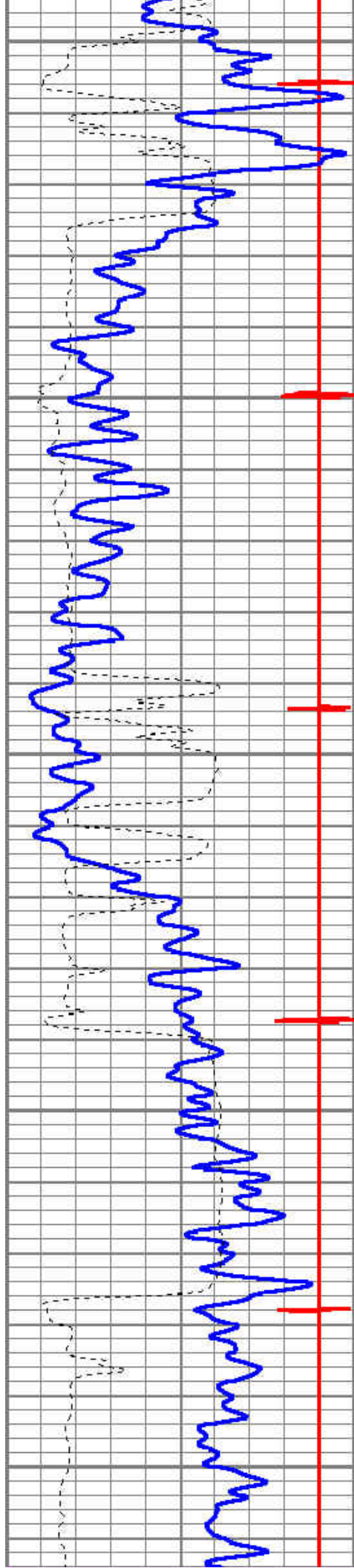


3100

3200



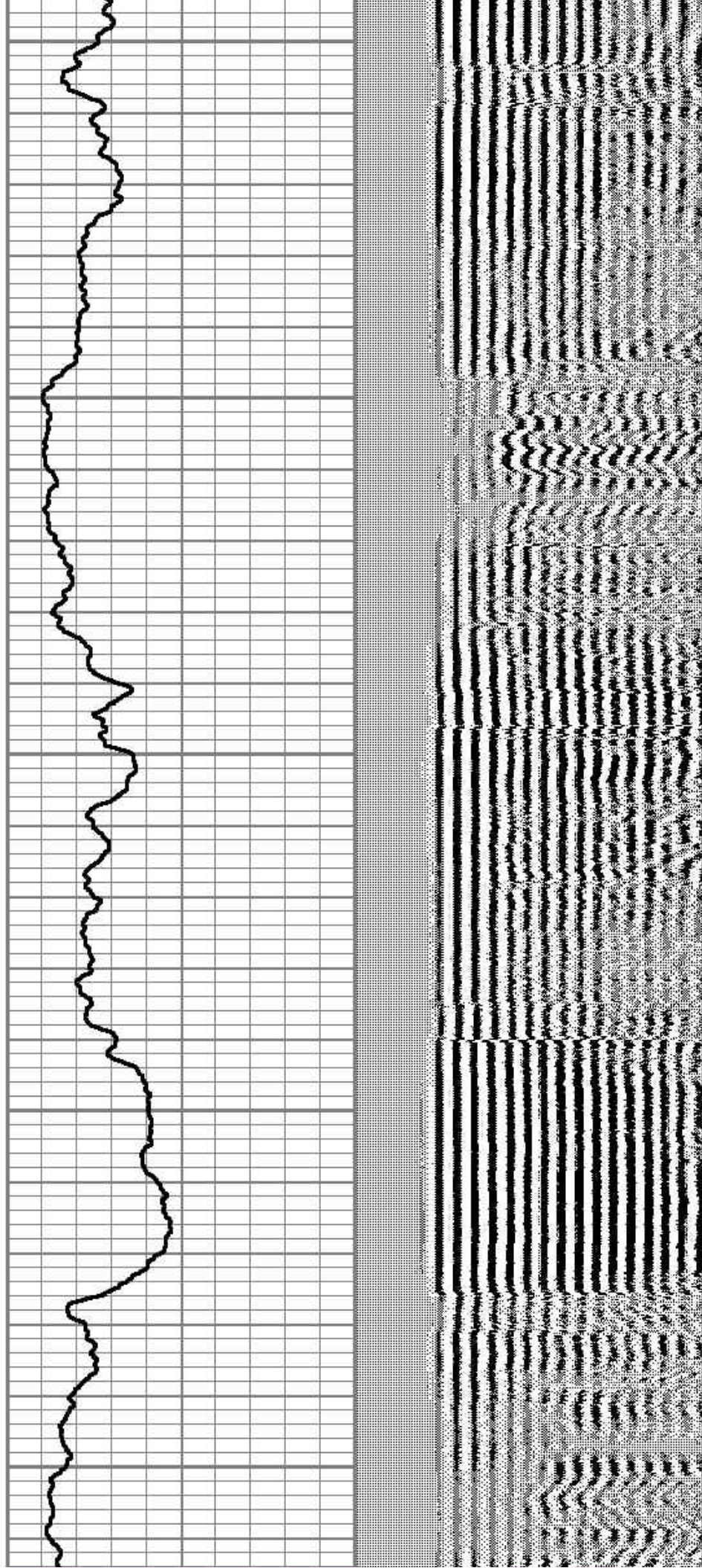


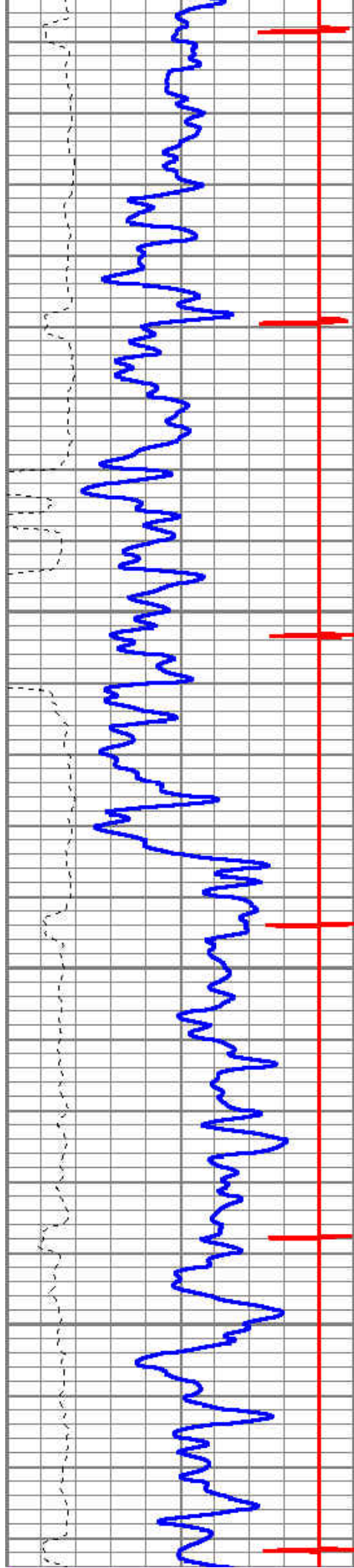


3500

3600

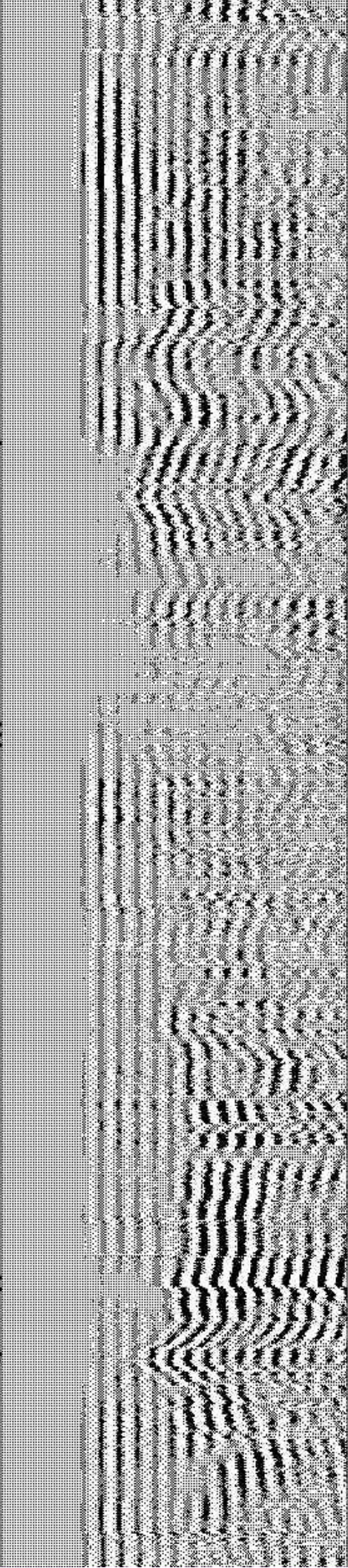
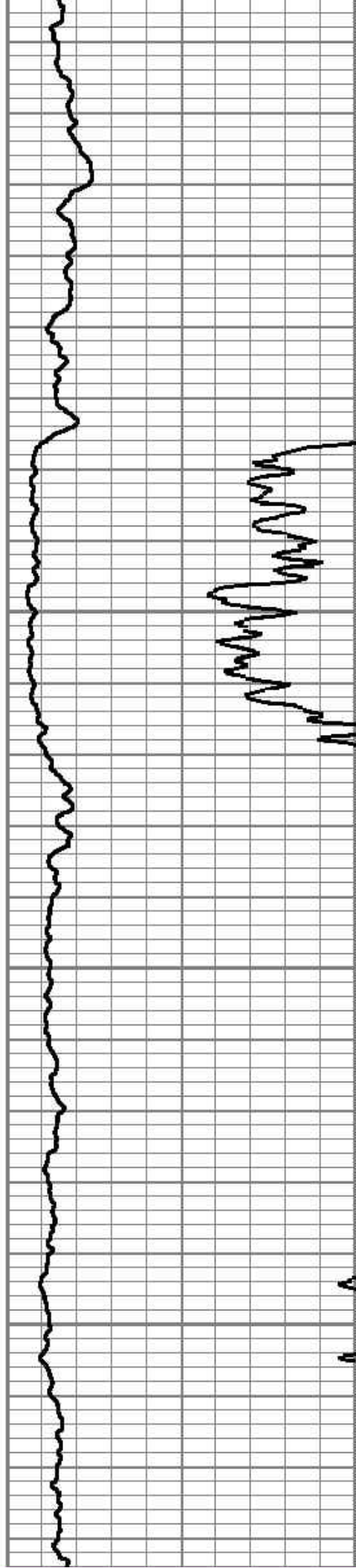
3700

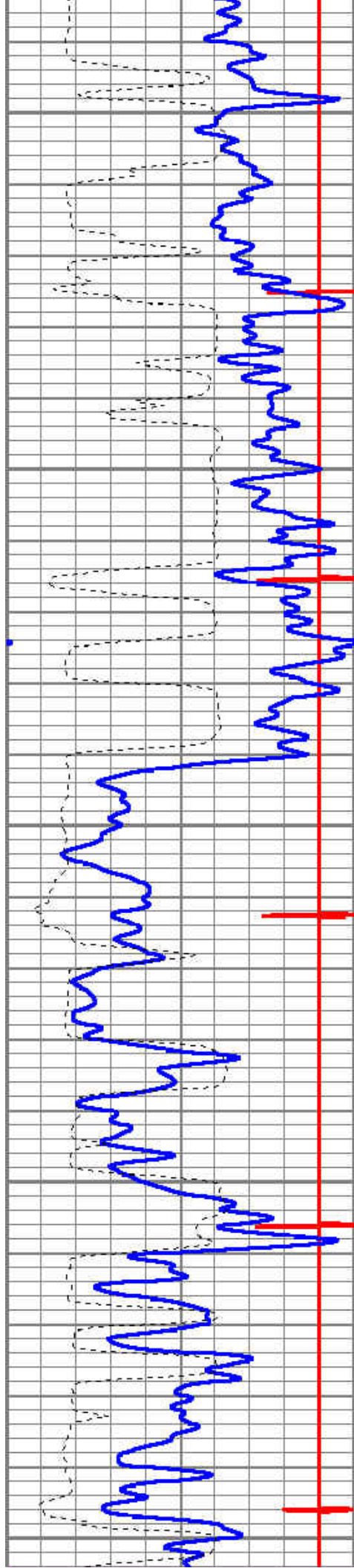




3800

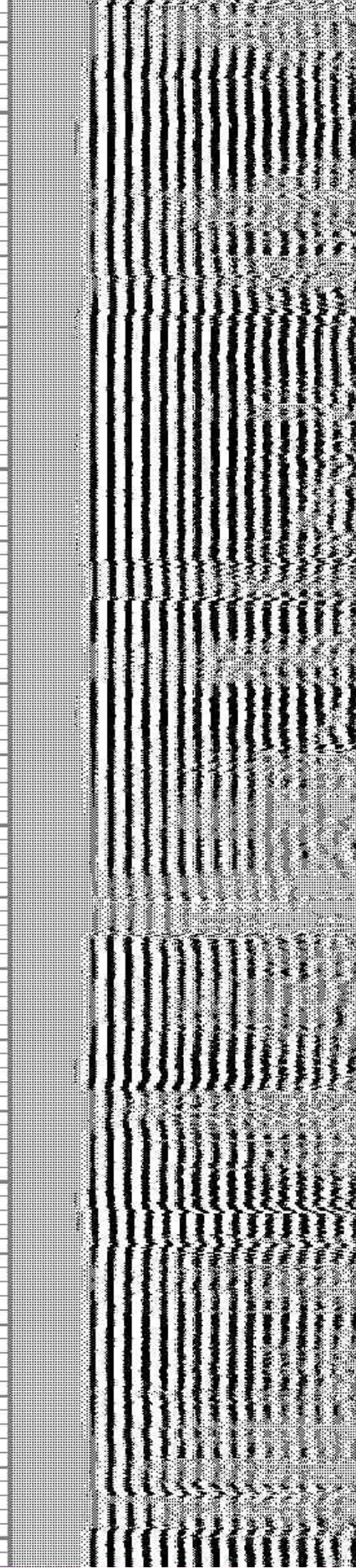
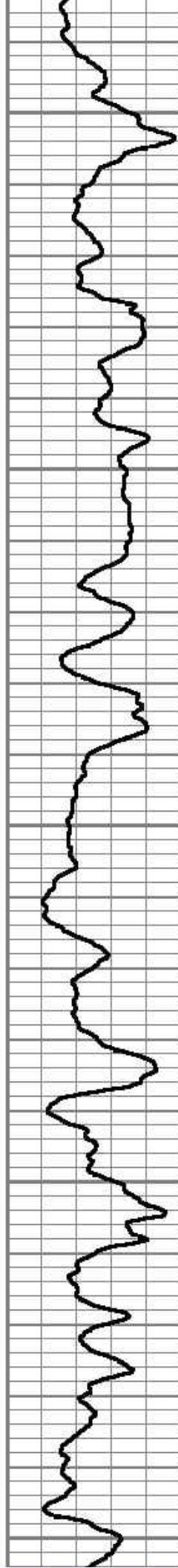
3900

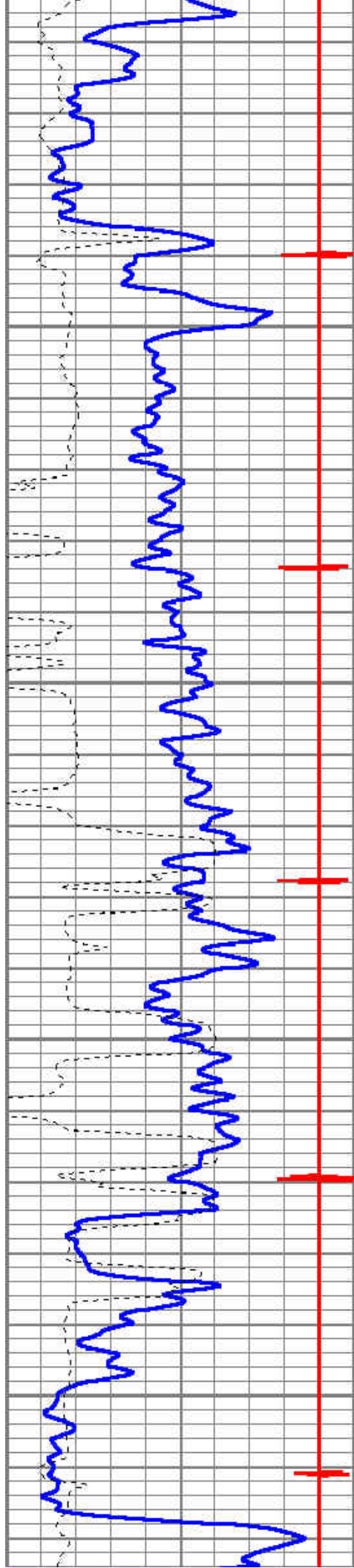




4000

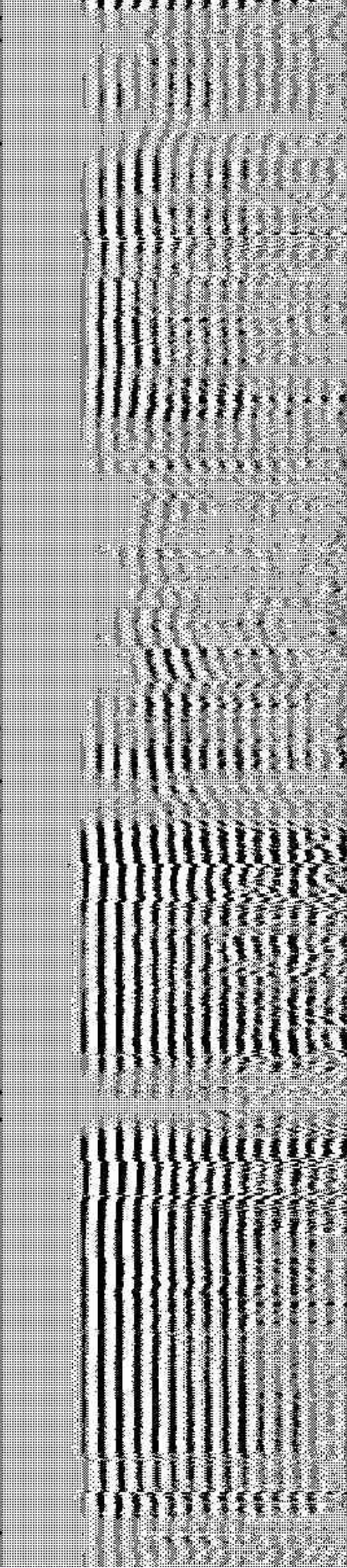
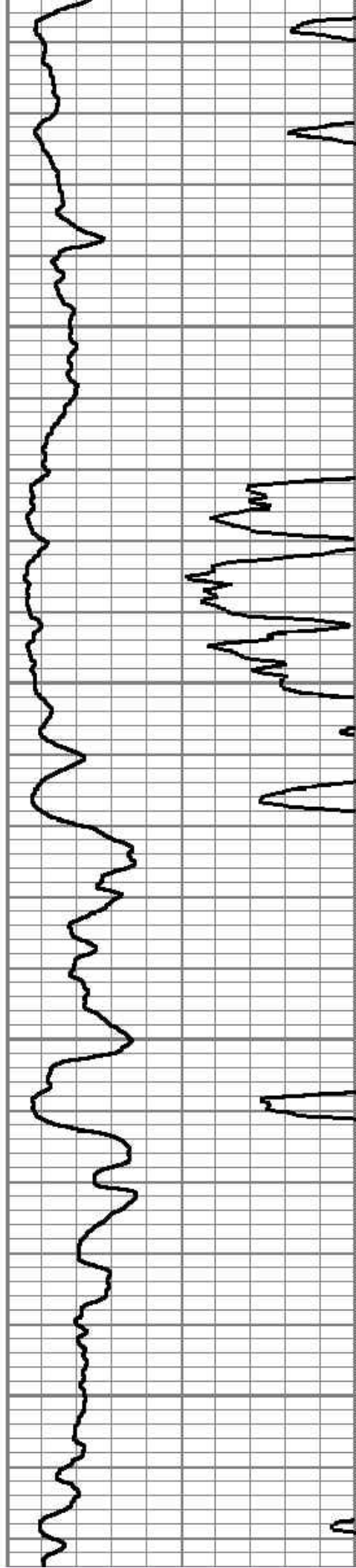
4100

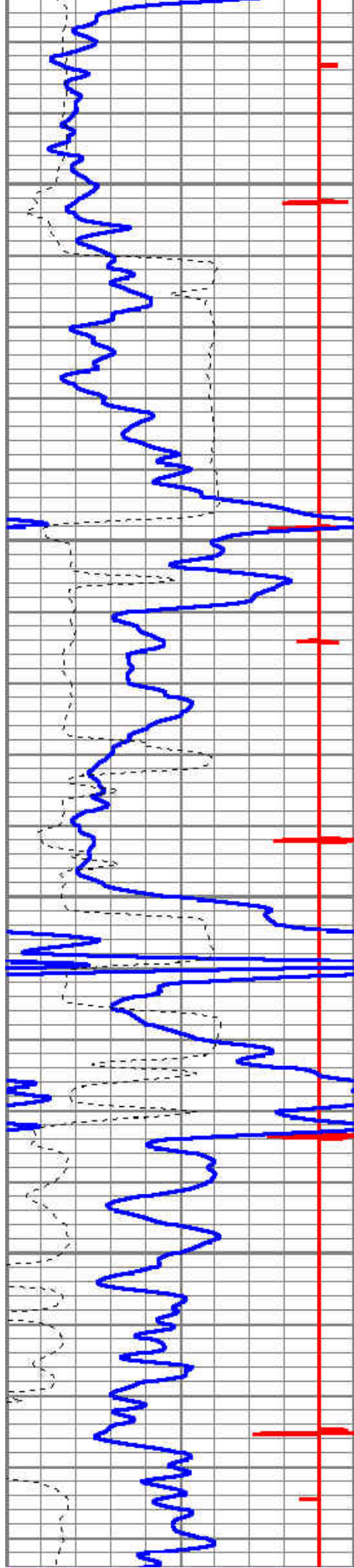




4200

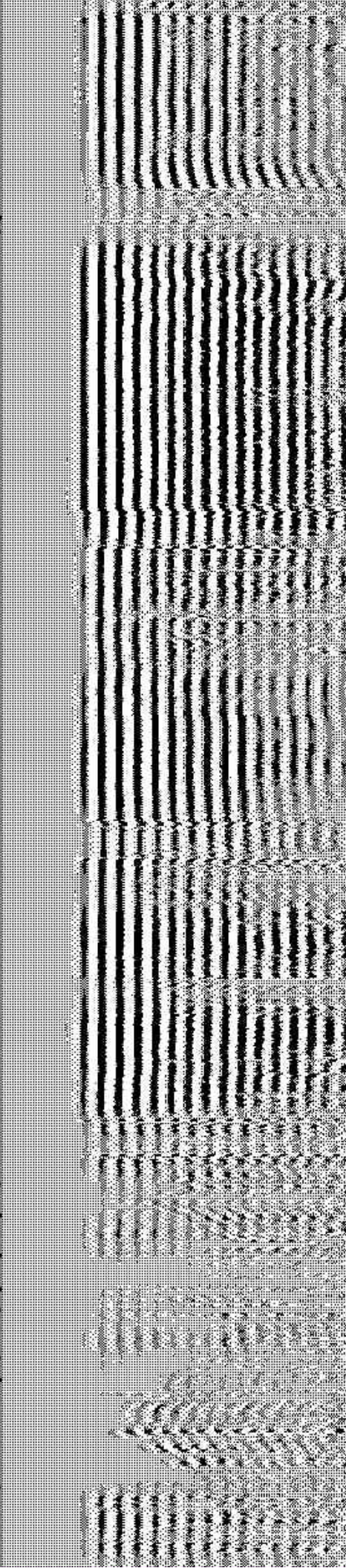
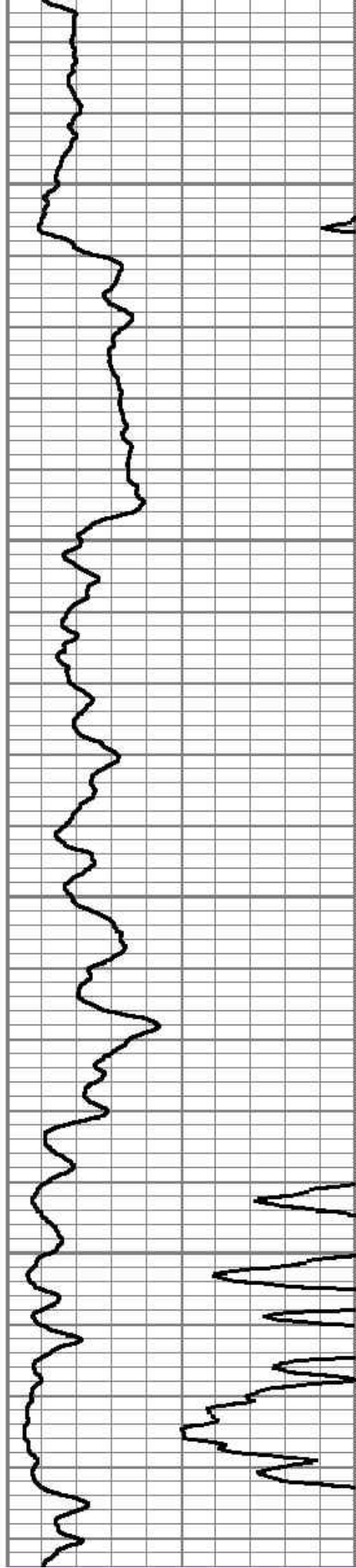
4300

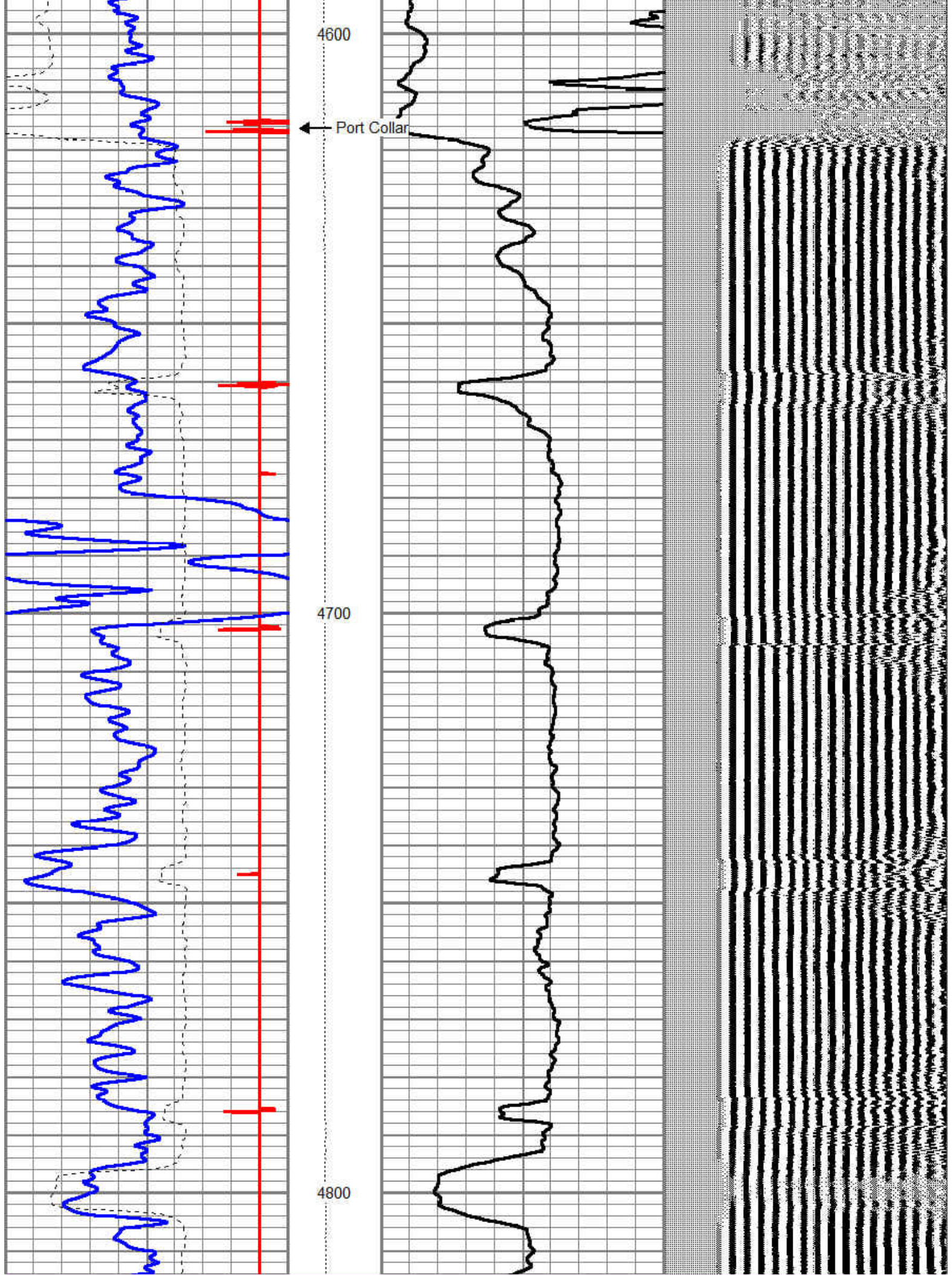


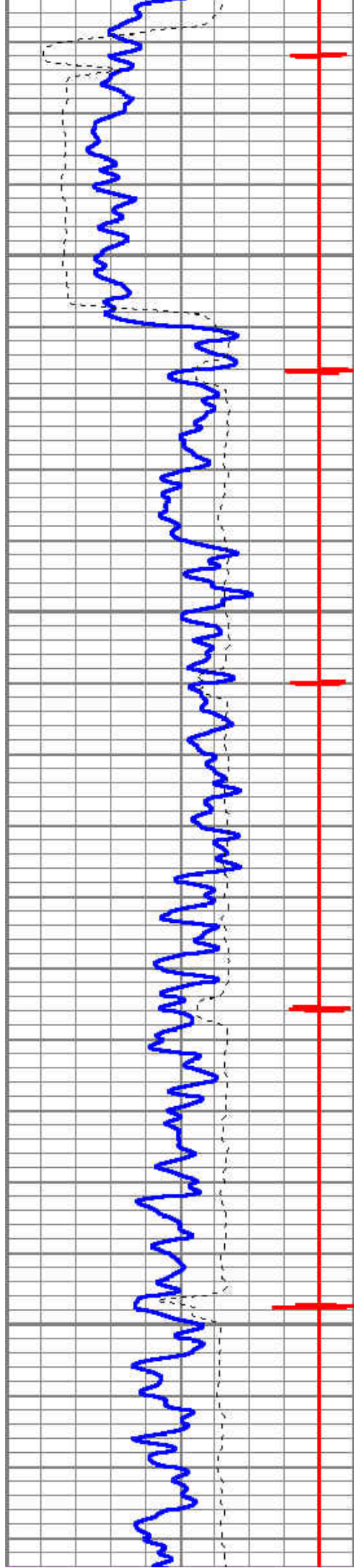


4400

4500

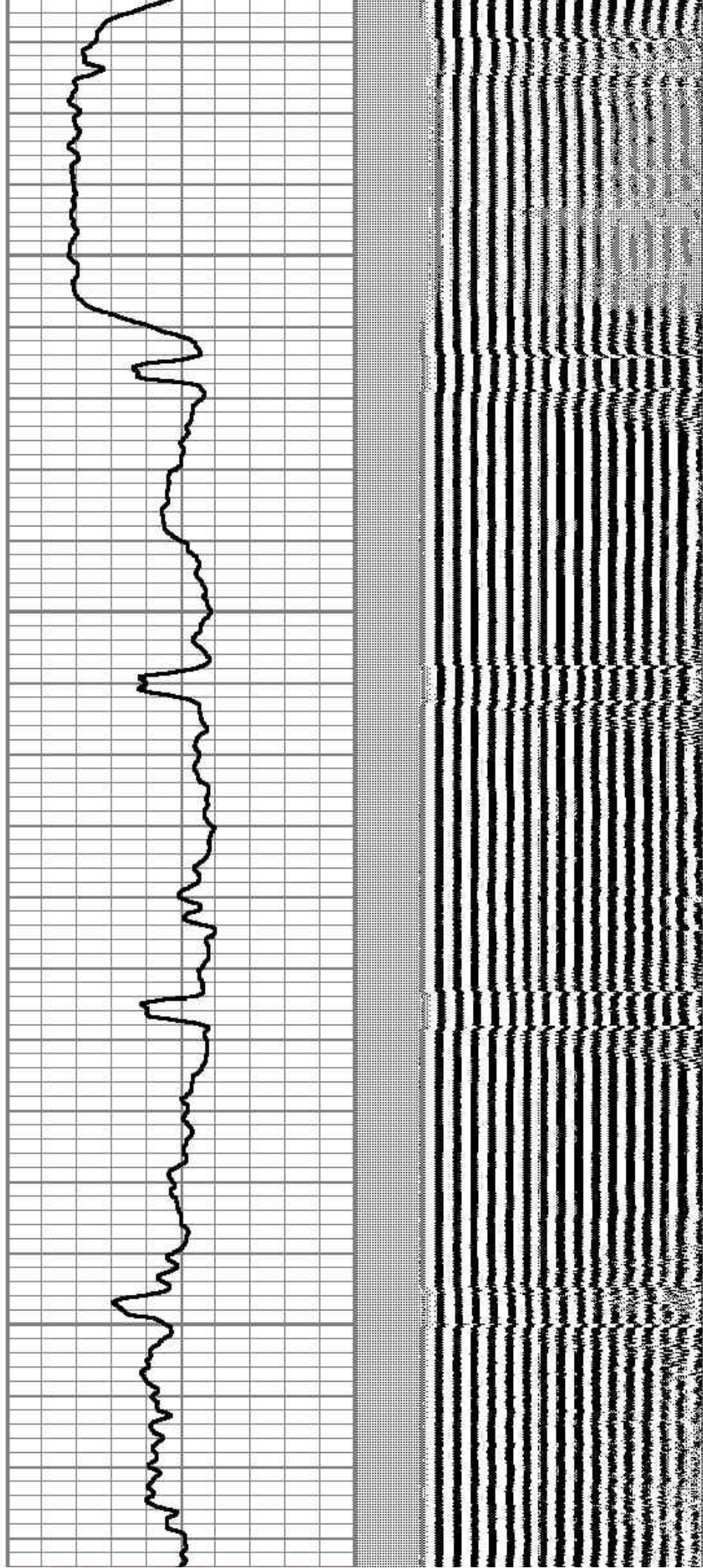


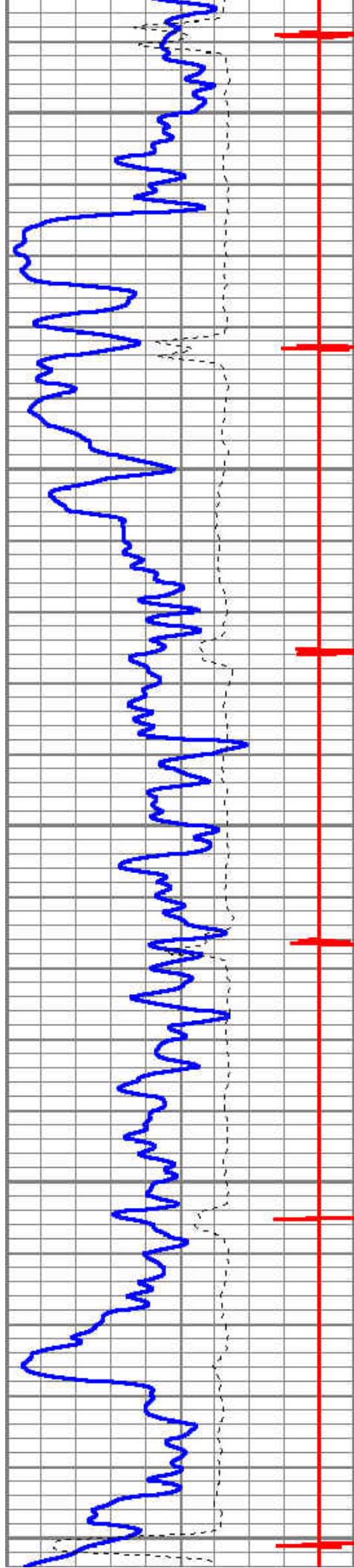




4900

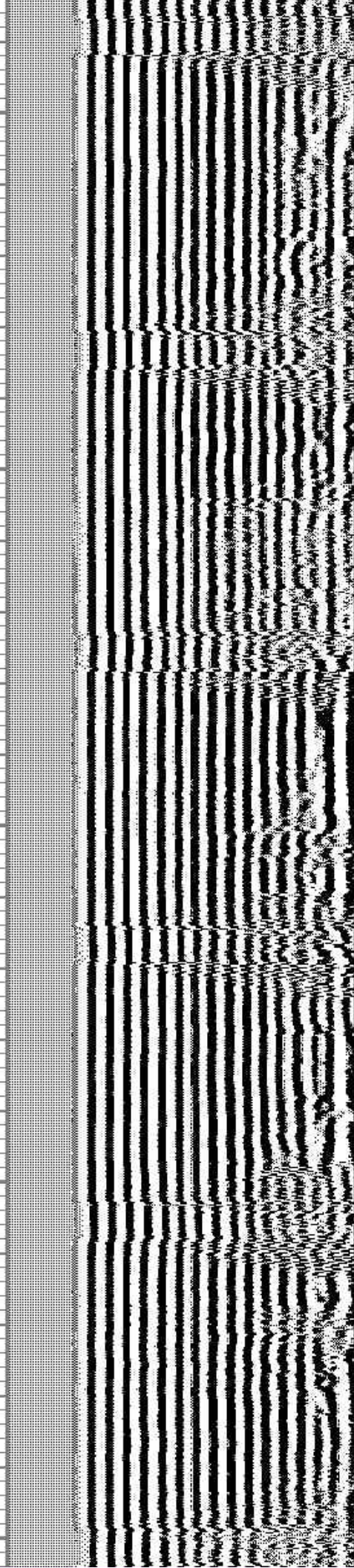
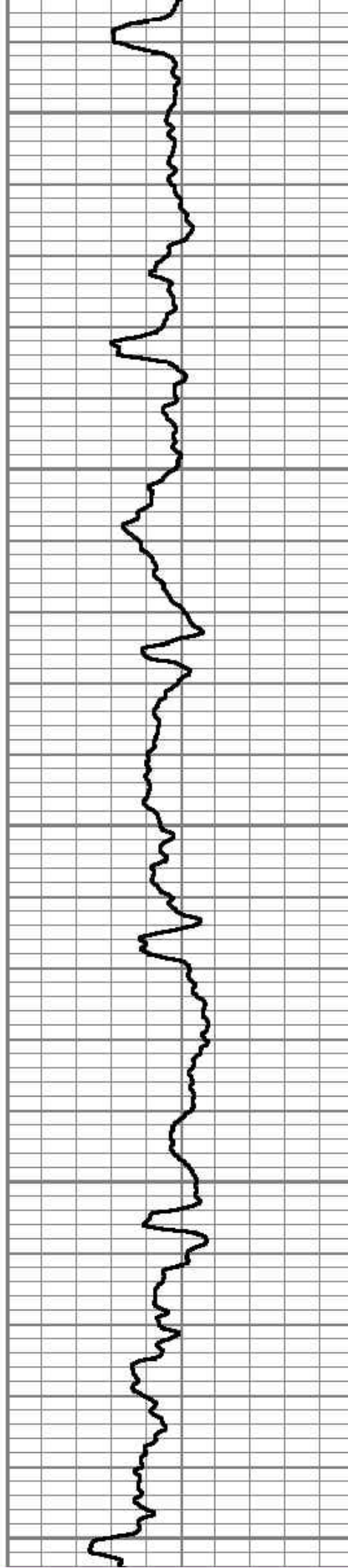
5000

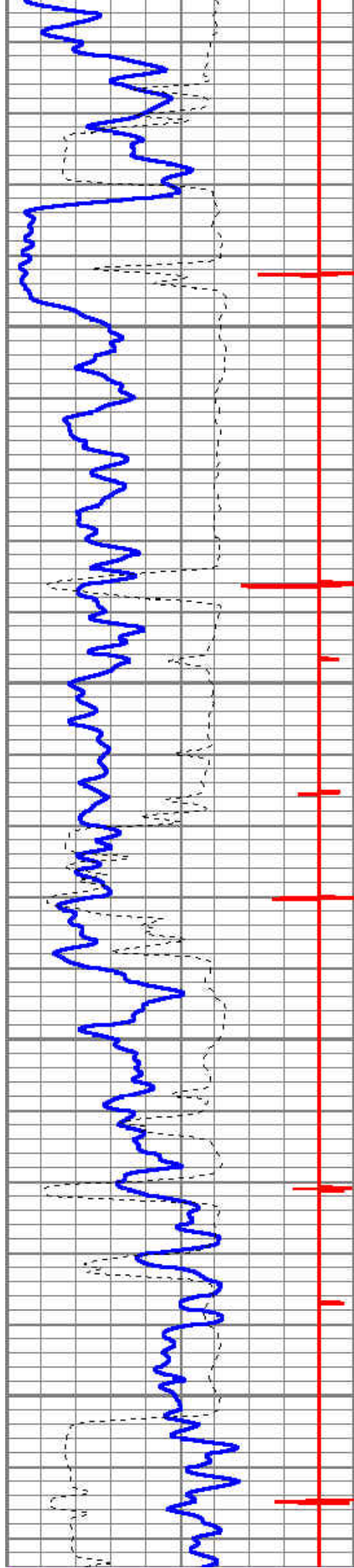




5100

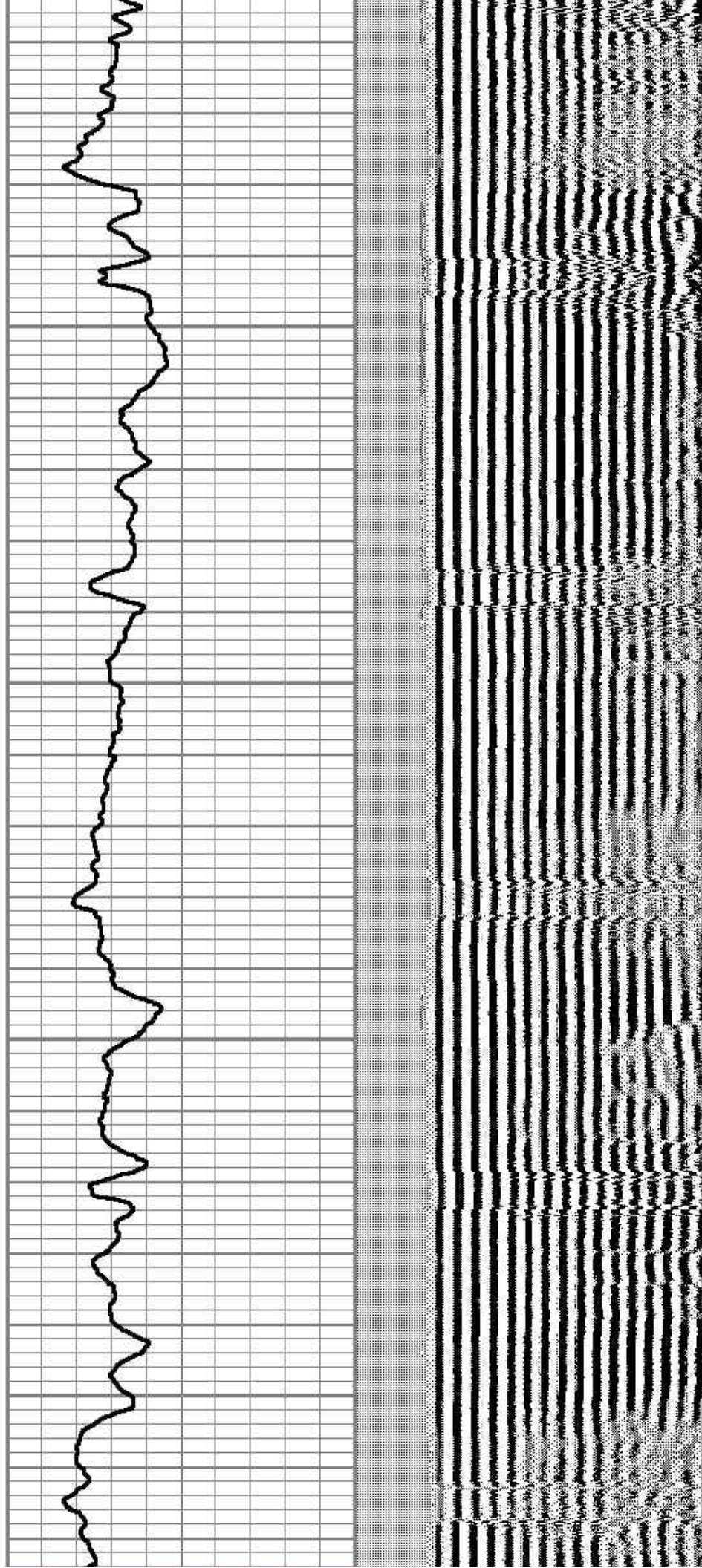
5200

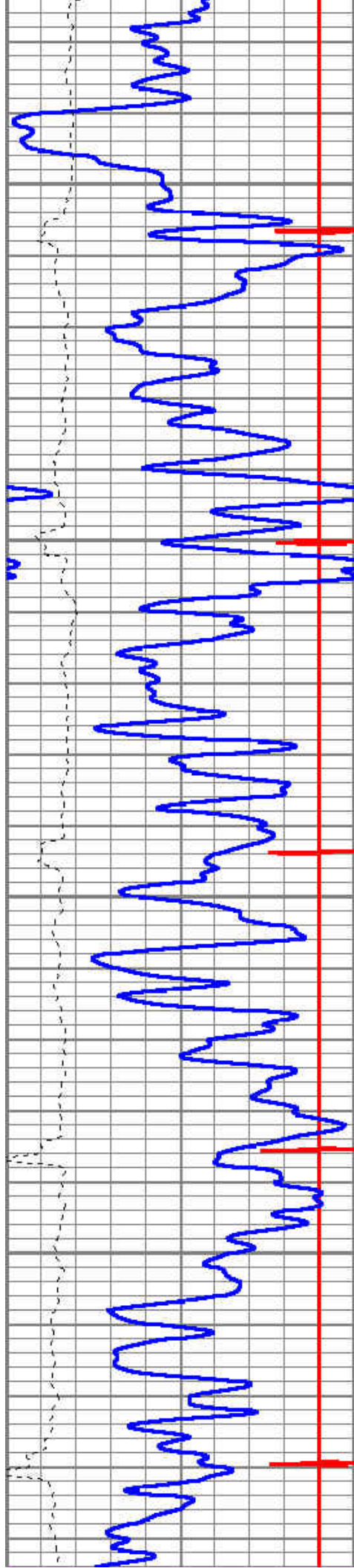




5300

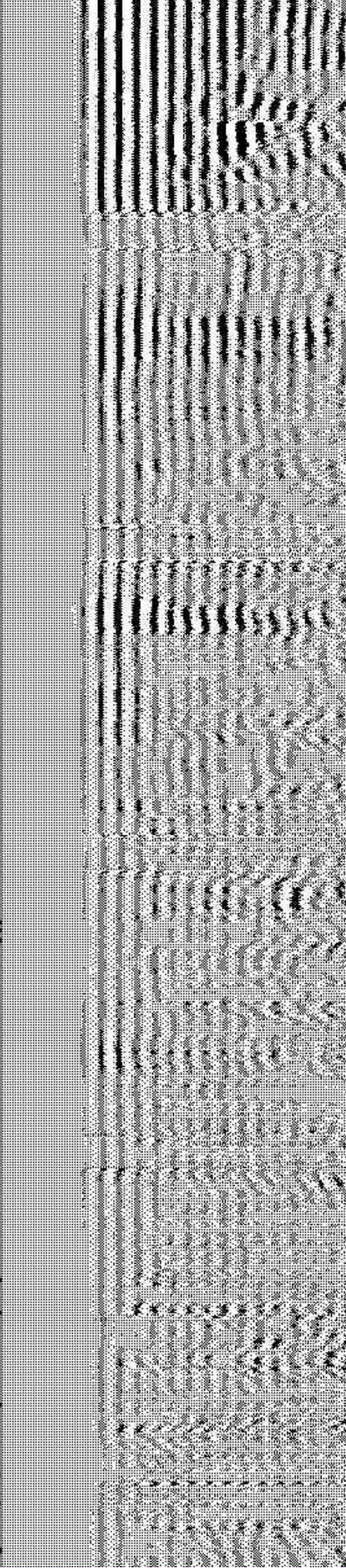
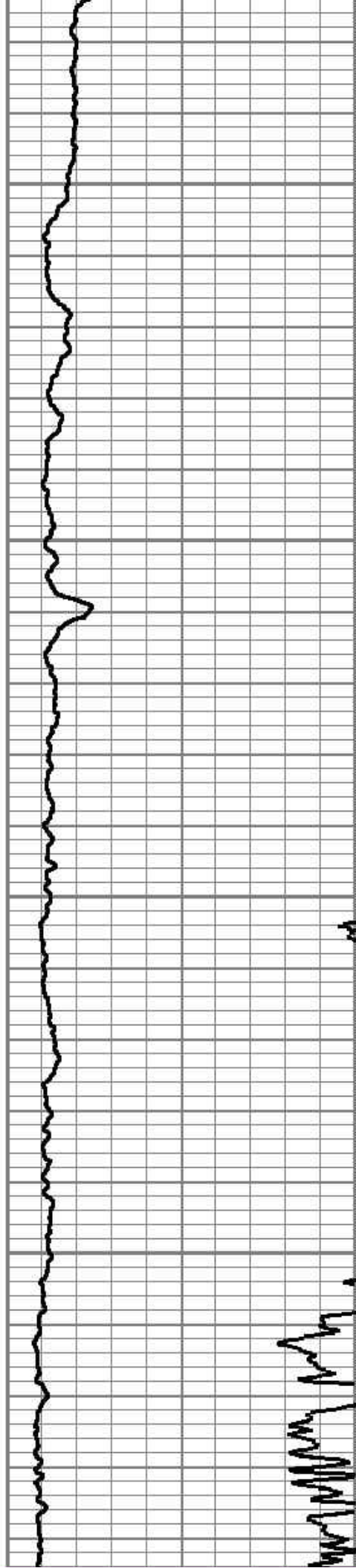
5400

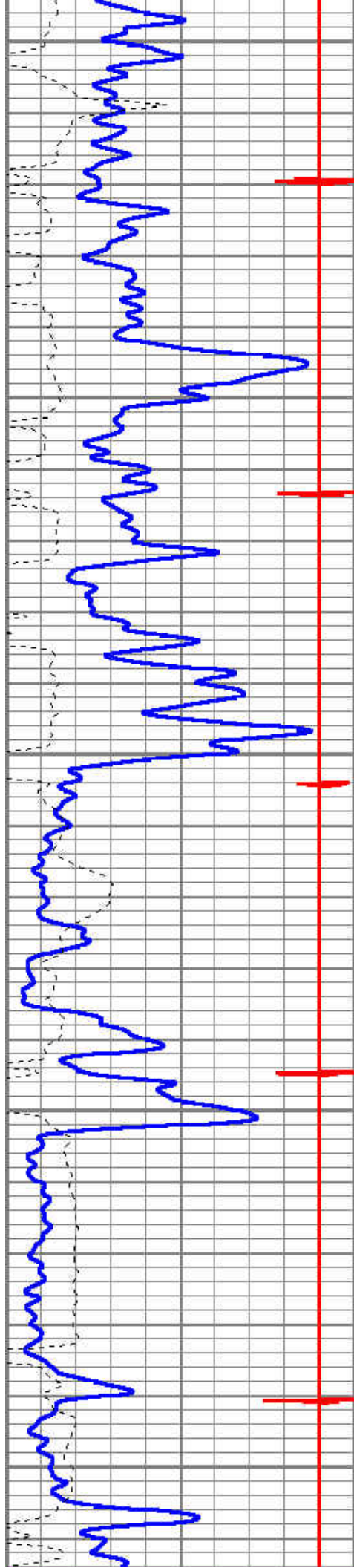




5500

5600

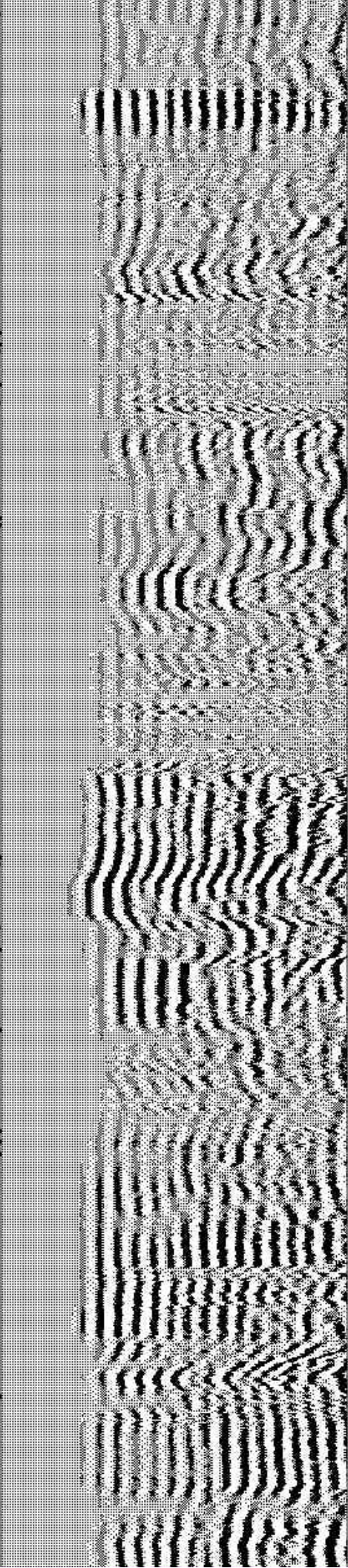
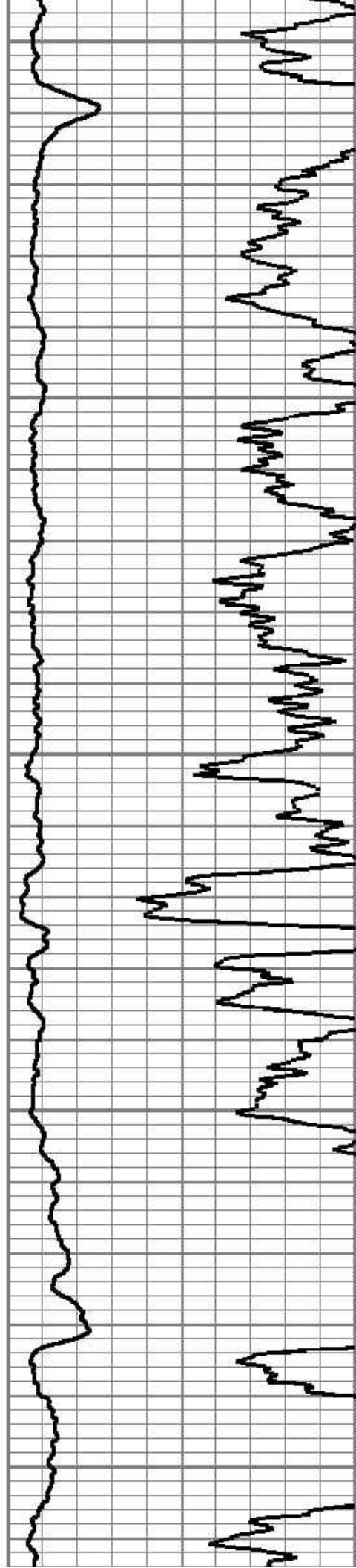


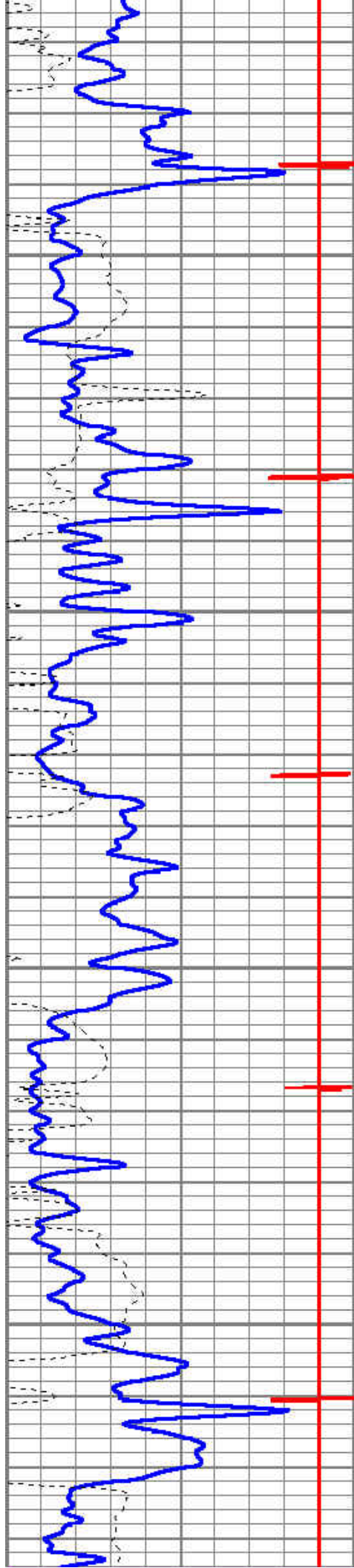


5700

5800

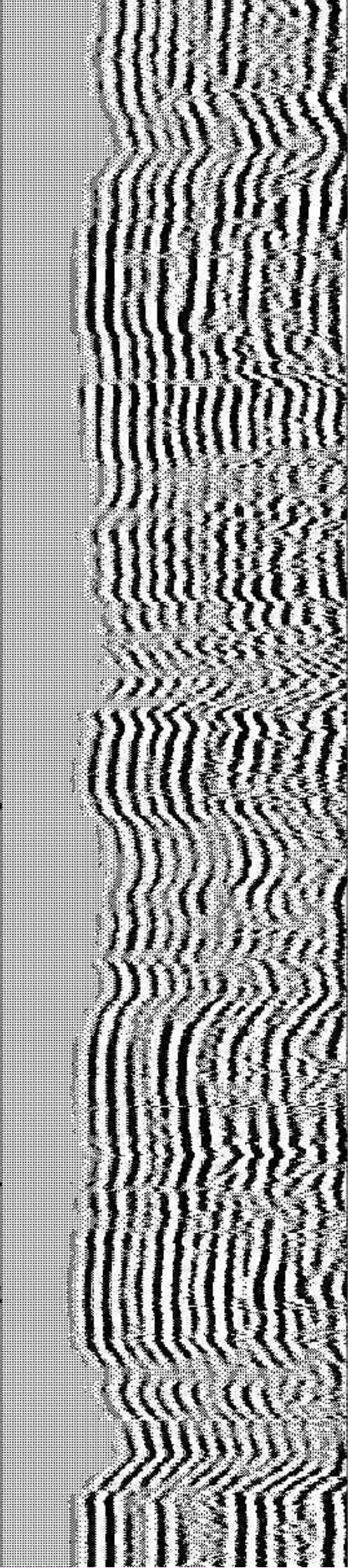
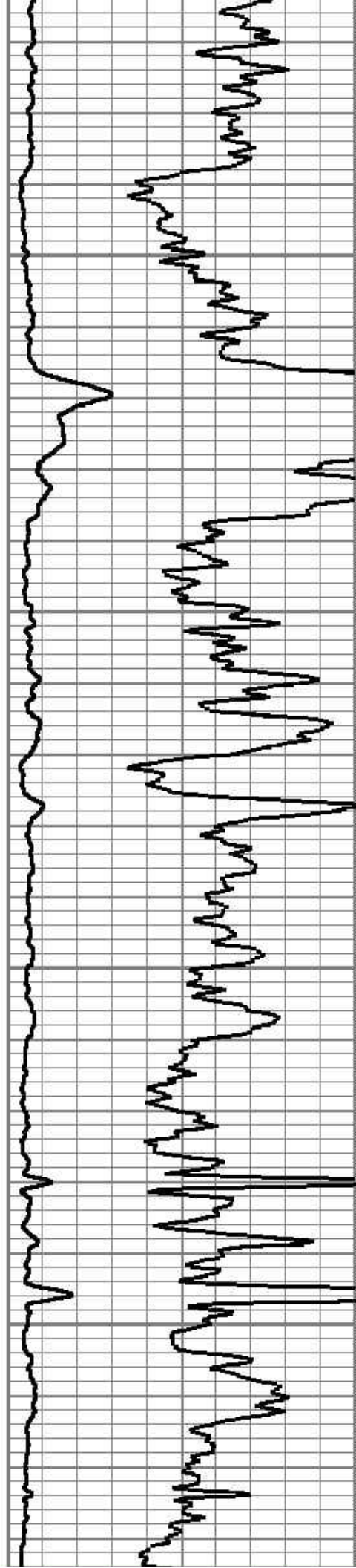
5900

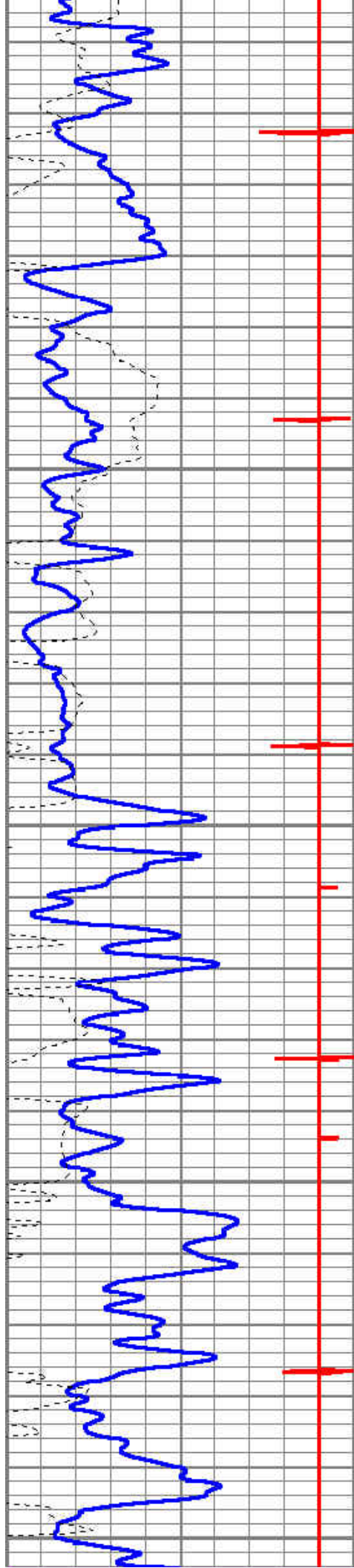




6000

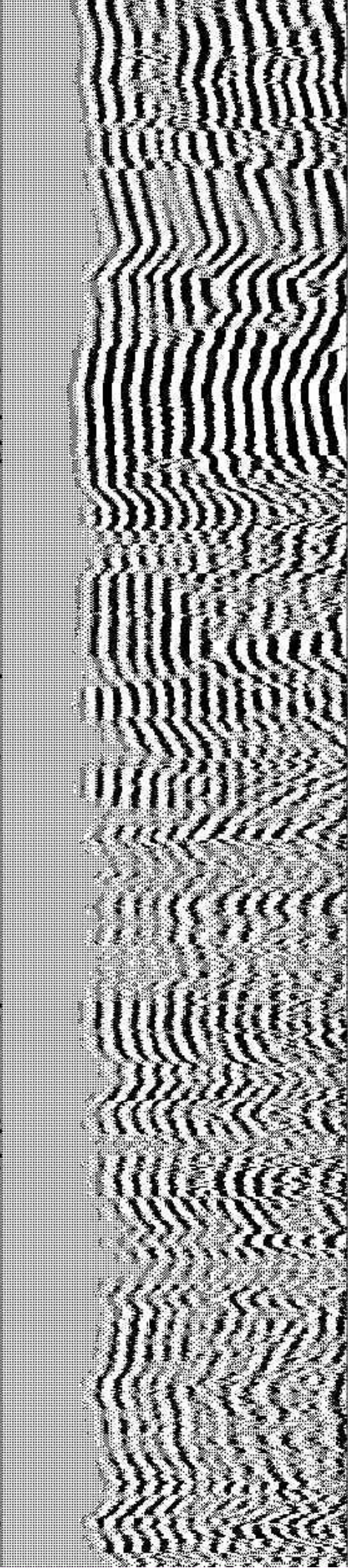
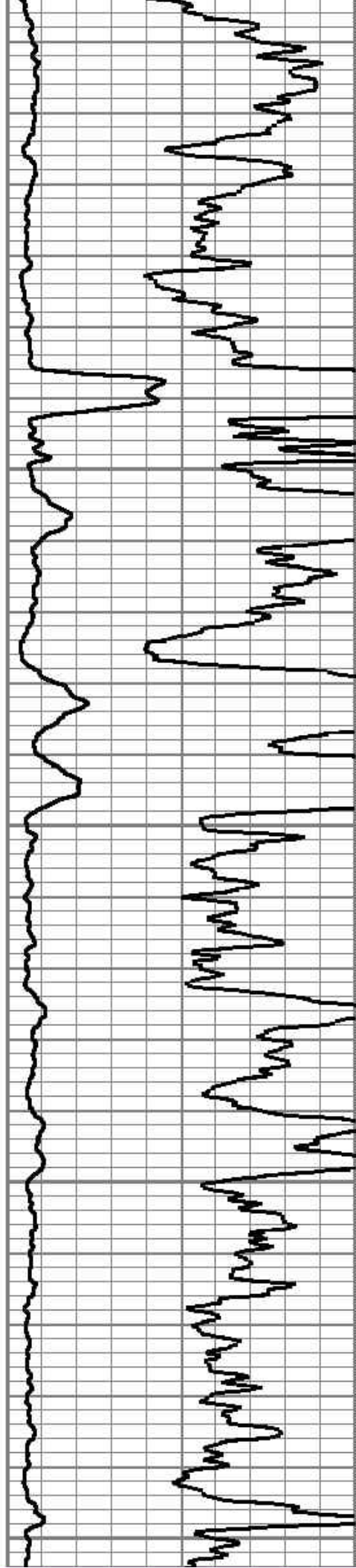
6100

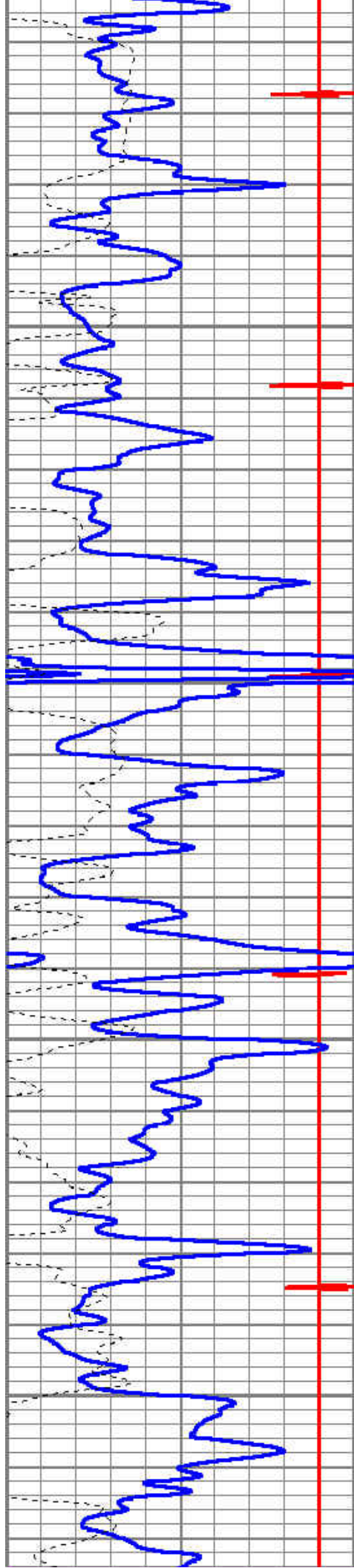




6200

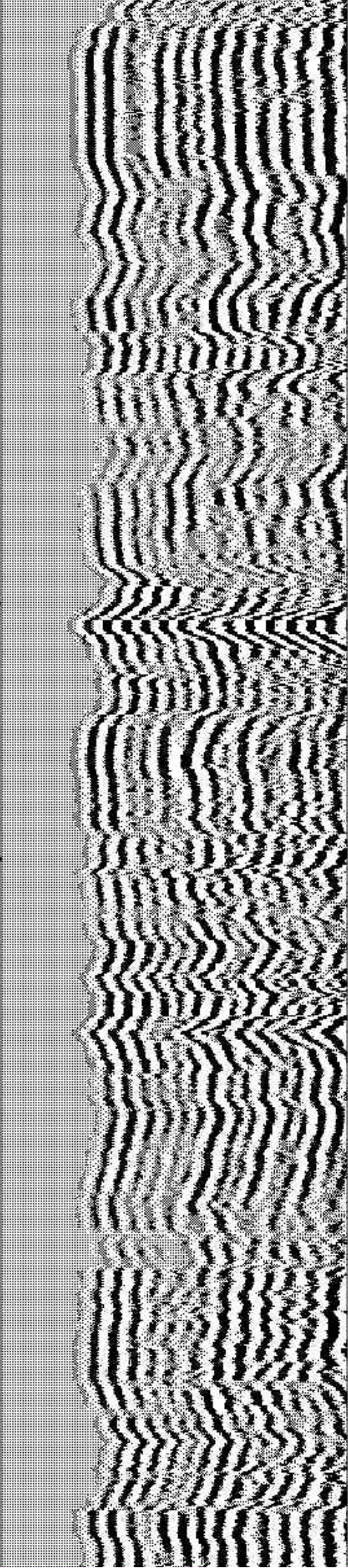
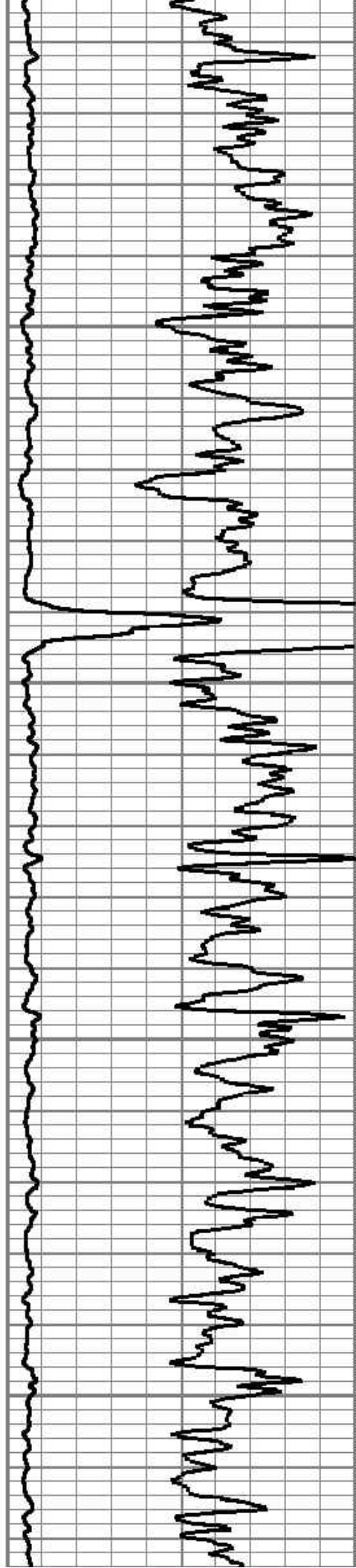
6300

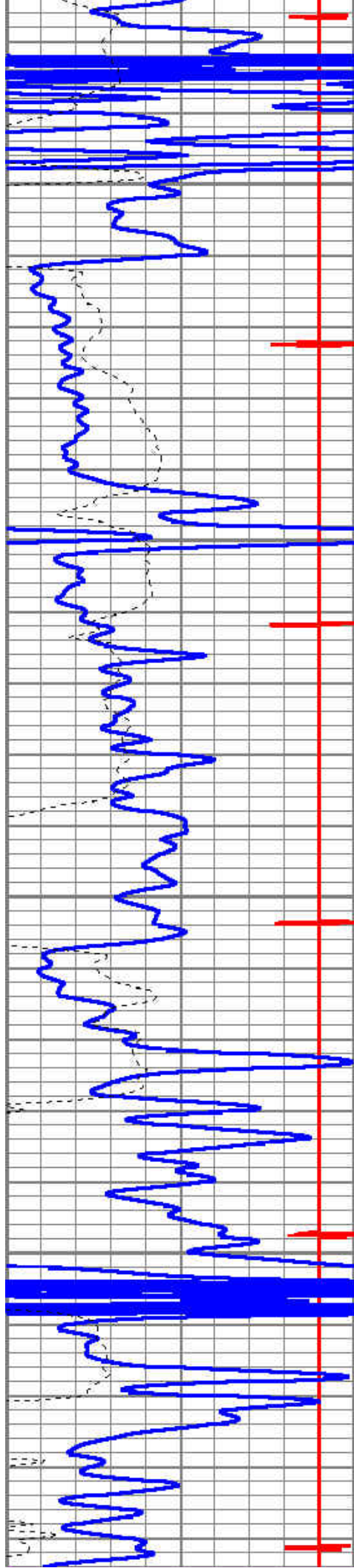




6400

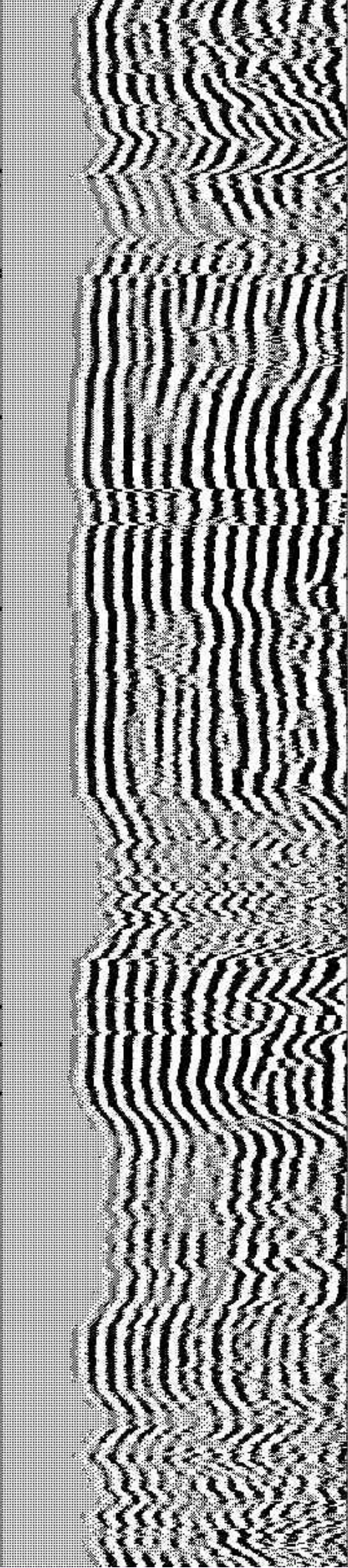
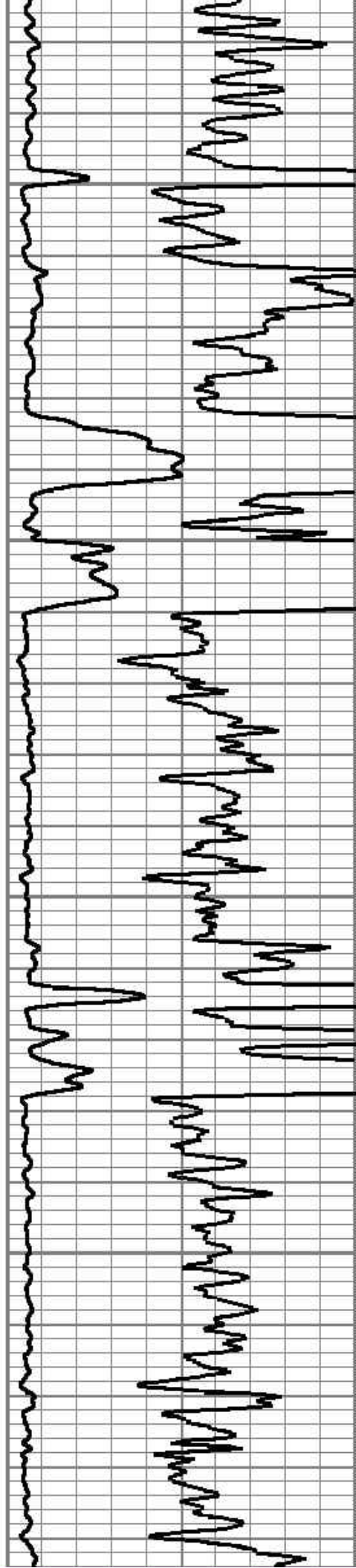
6500

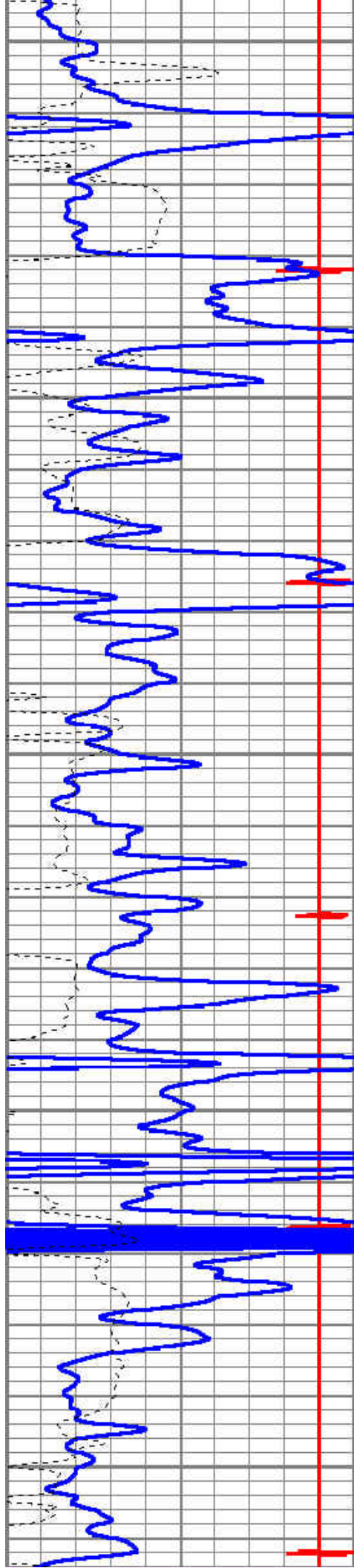




6600

6700

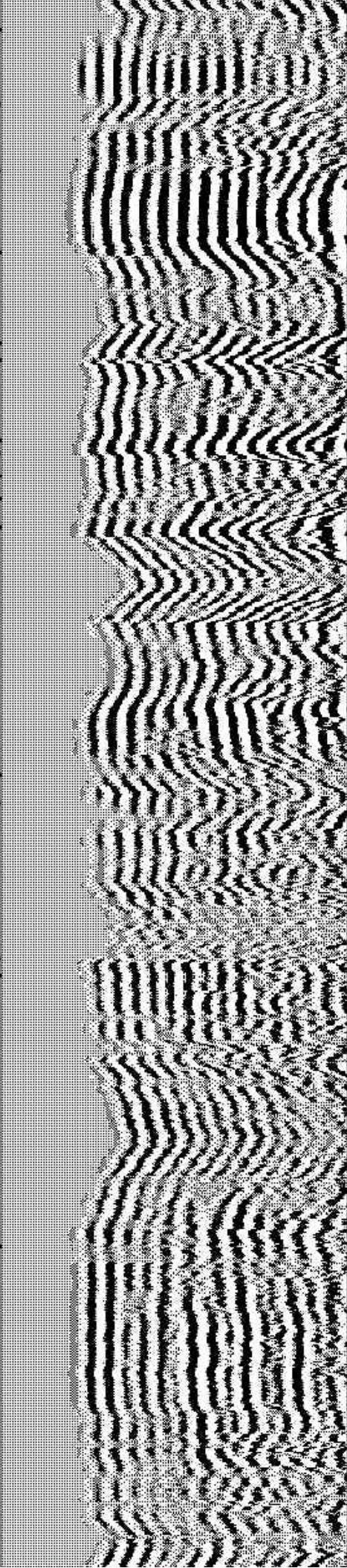
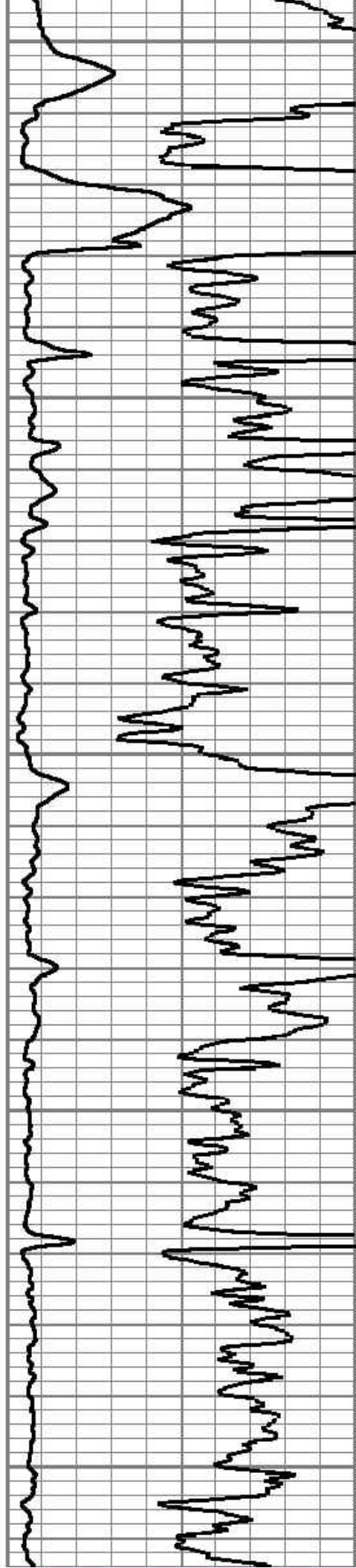


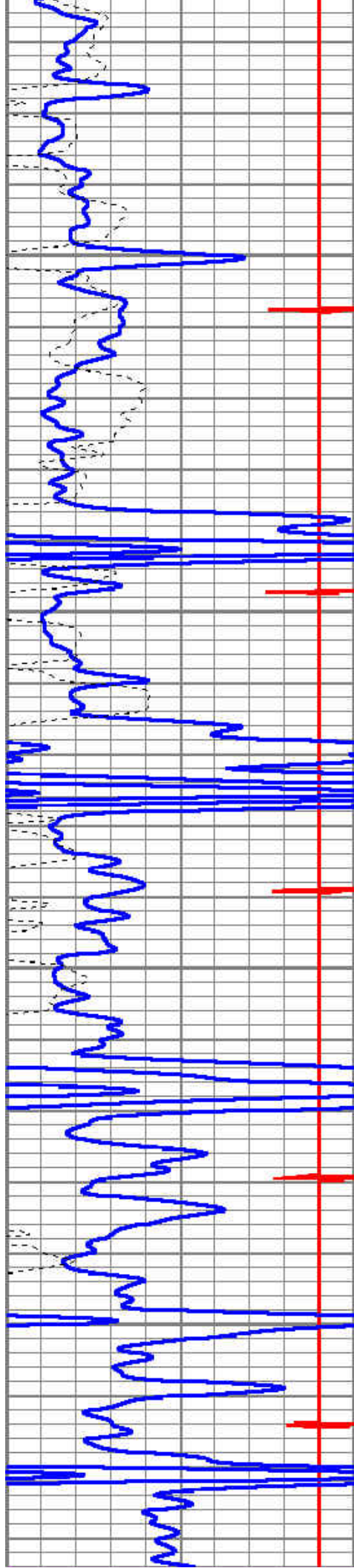


6800

6900

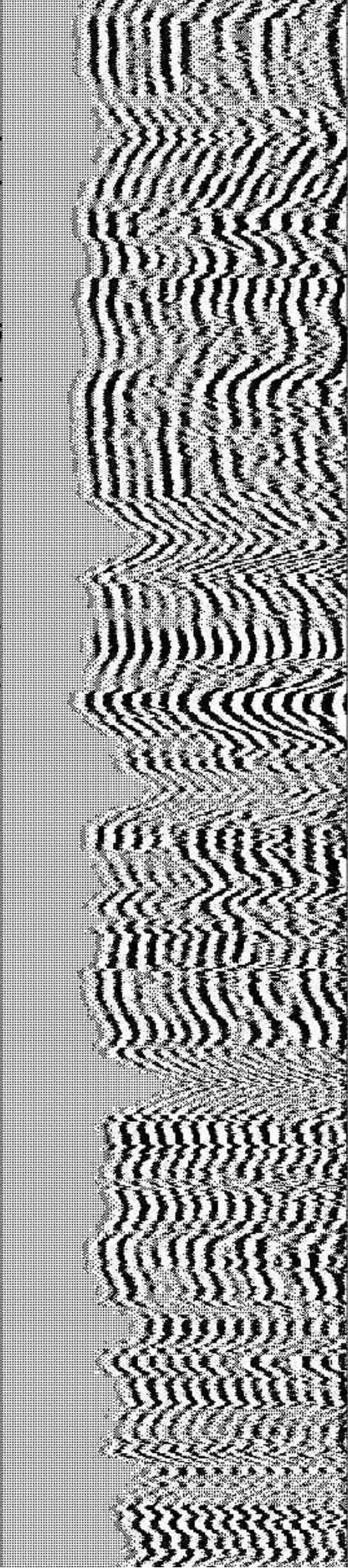
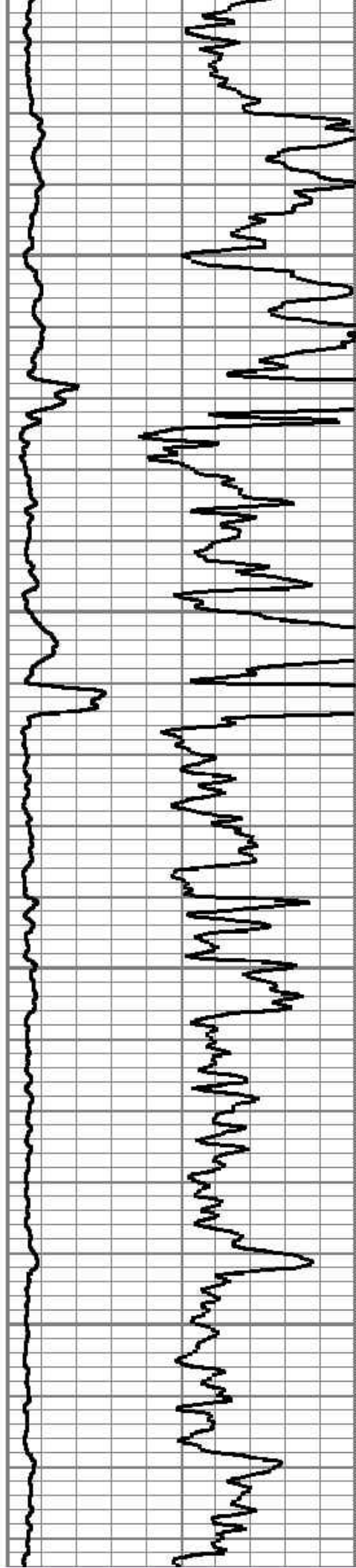
7000

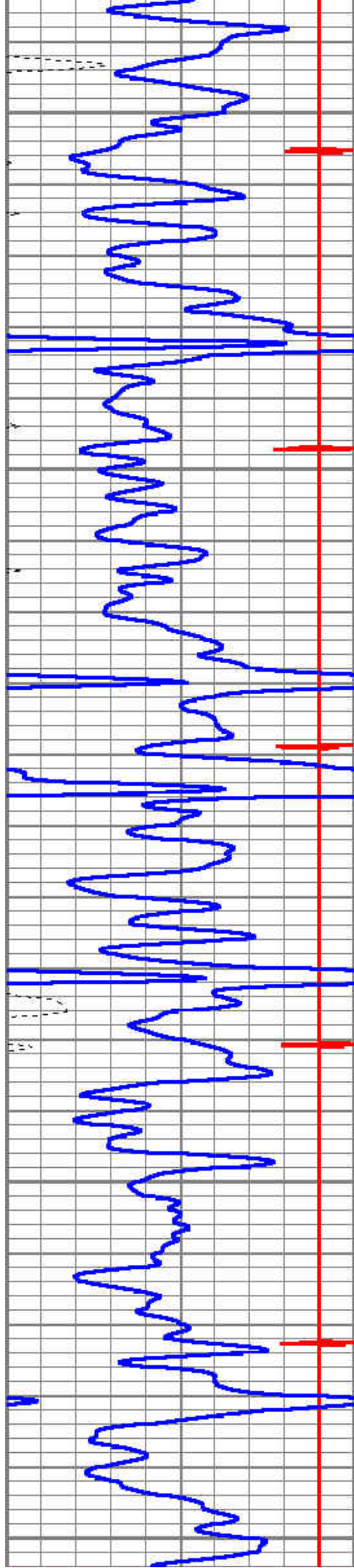




7100

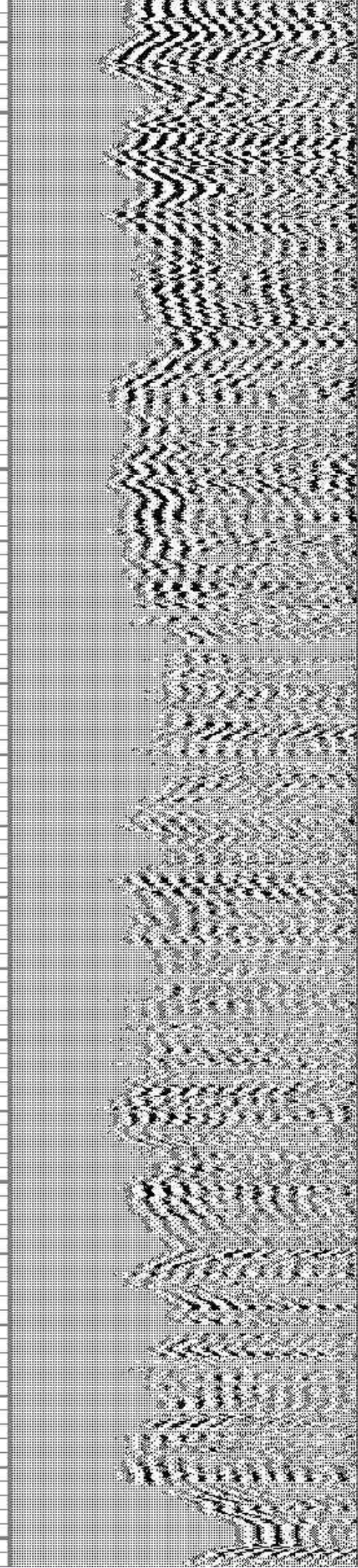
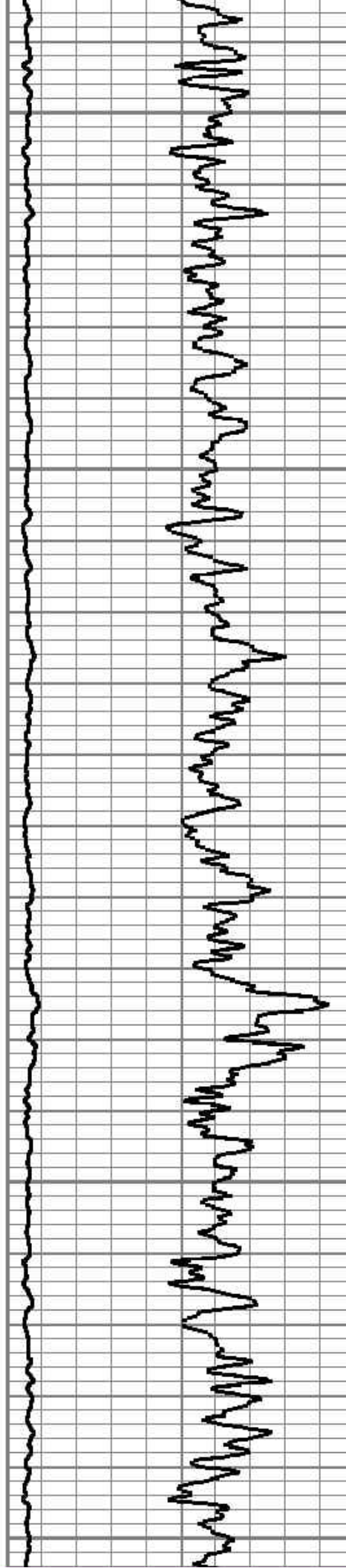
7200

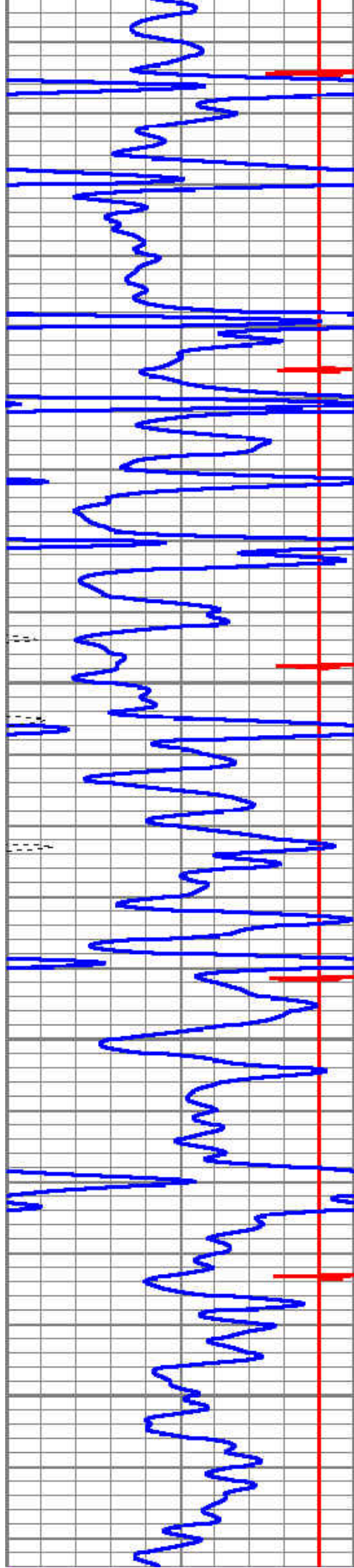




7300

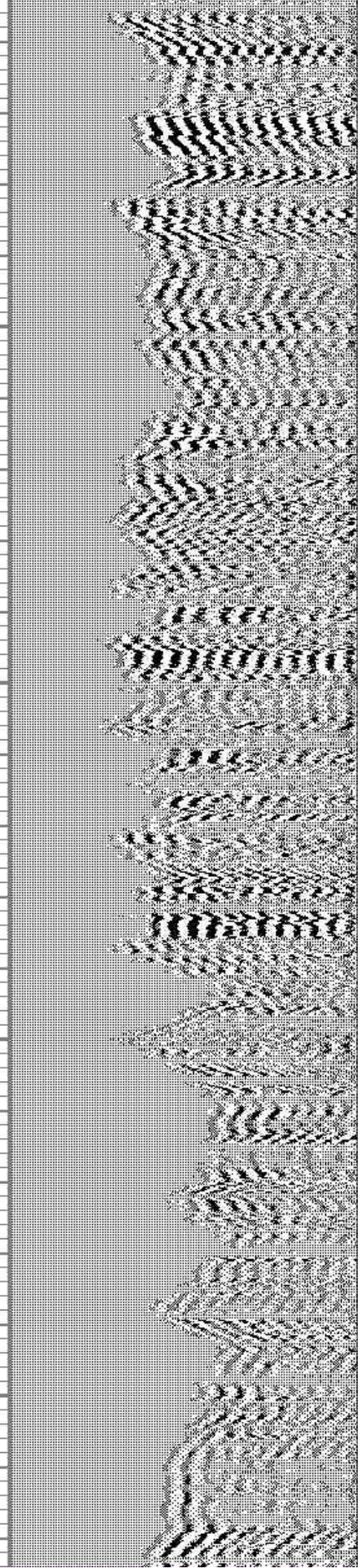
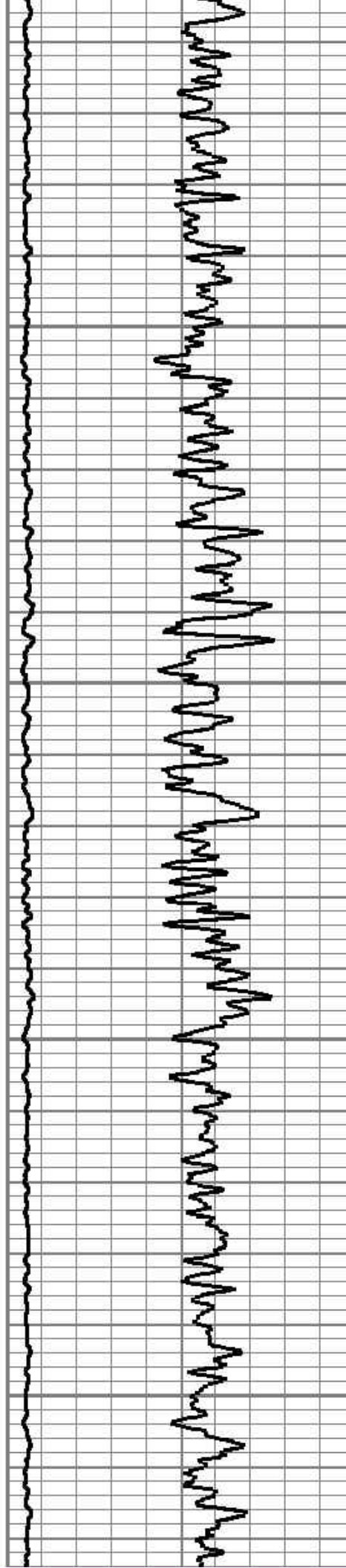
7400

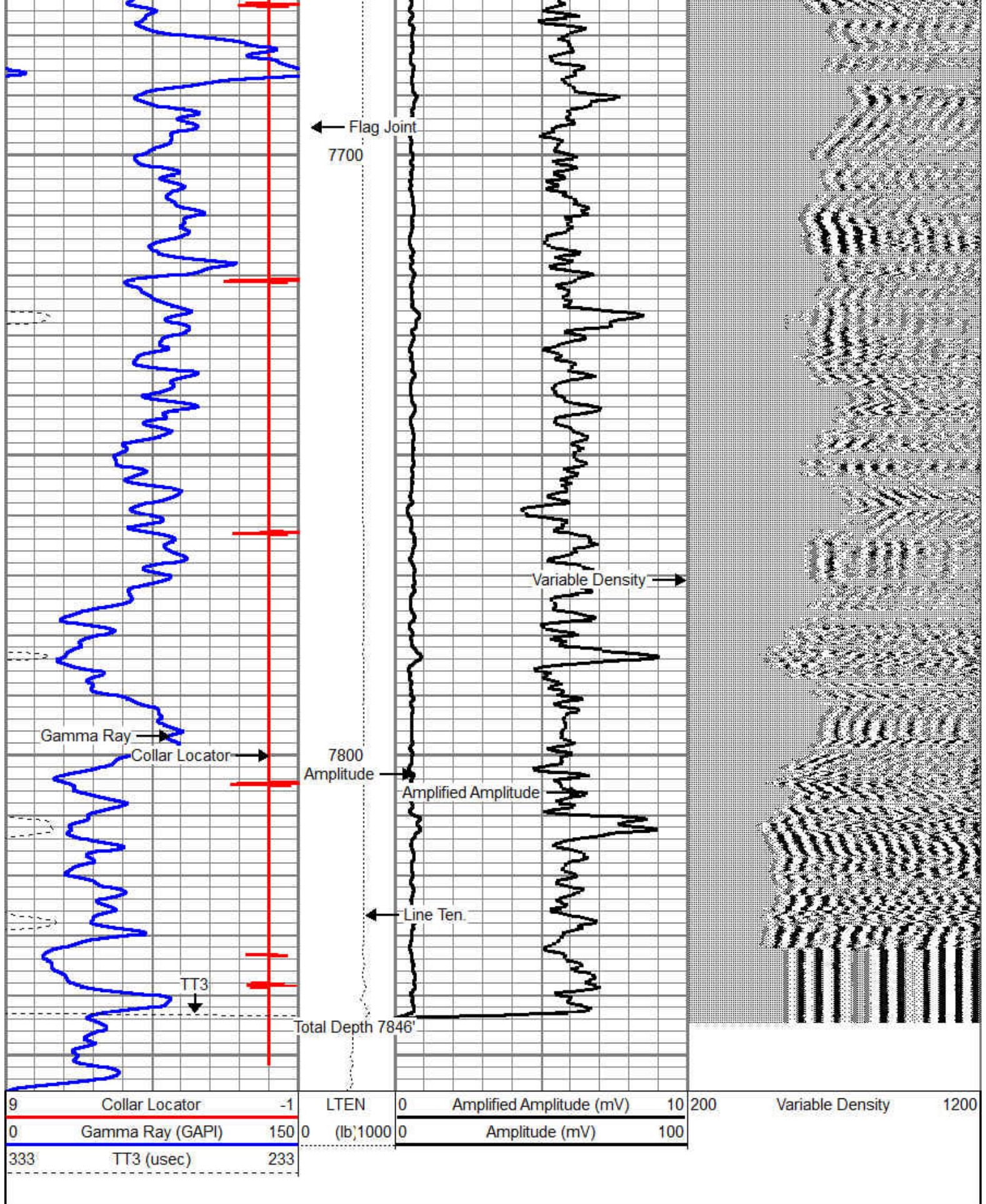




7500

7600



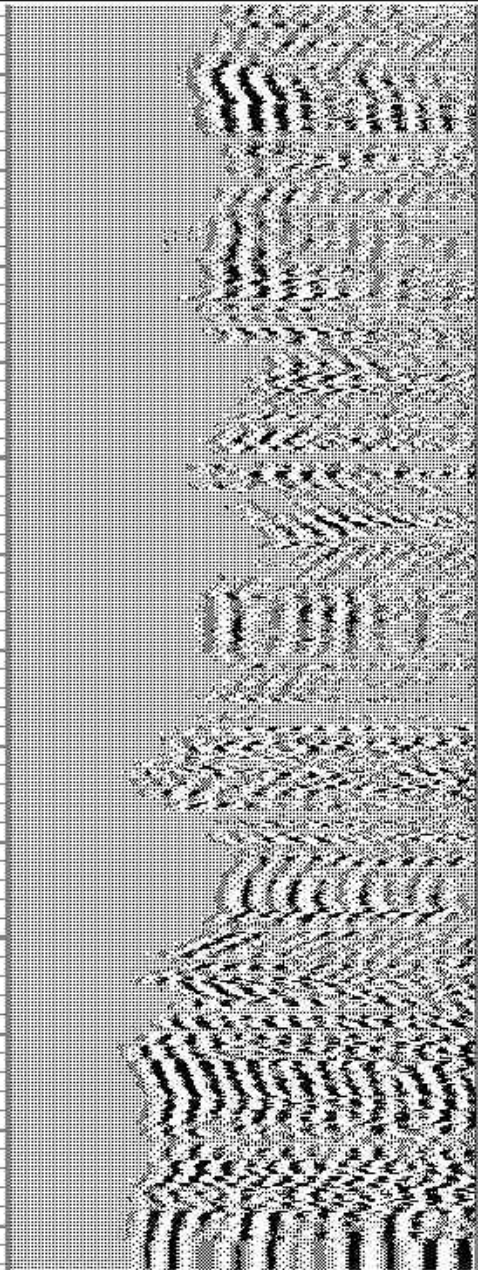
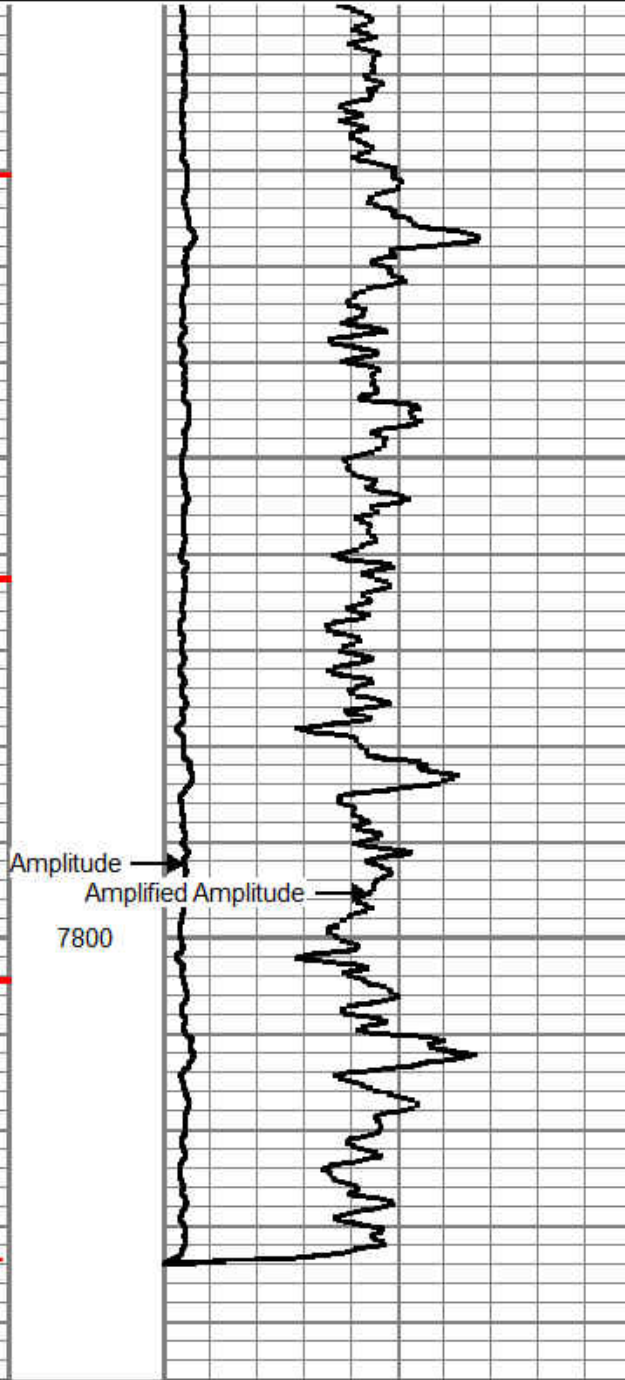
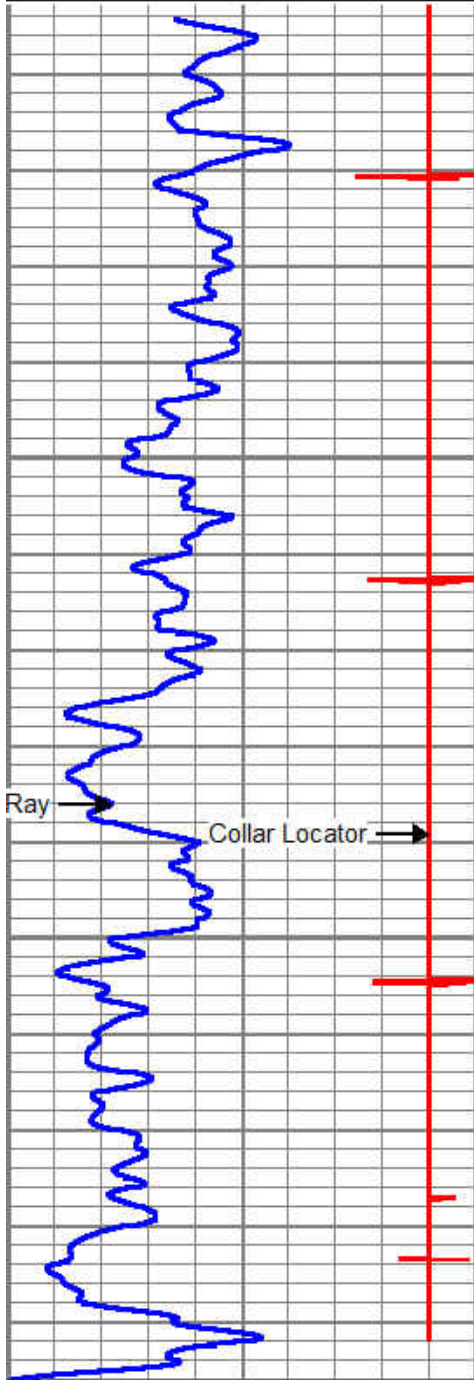


Database File: mahalo #8.db
 Dataset Pathname: pass2
 Presentation Format: cbl_dr
 Dataset Creation: Fri Oct 12 07:48:25 2012 by Log SCH 120430
 Charted by: Depth in Feet scaled 1:240

9	Collar Locator	-1
0	Gamma Ray (GAPI)	200

0	Amplified Amplitude (mV)	10
0	Amplitude (mV)	100

200 Variable Density 1200



9	Collar Locator	-1
0	Gamma Ray (GAPI)	200

0	Amplified Amplitude (mV)	10
0	Amplitude (mV)	100

200 Variable Density 1200