

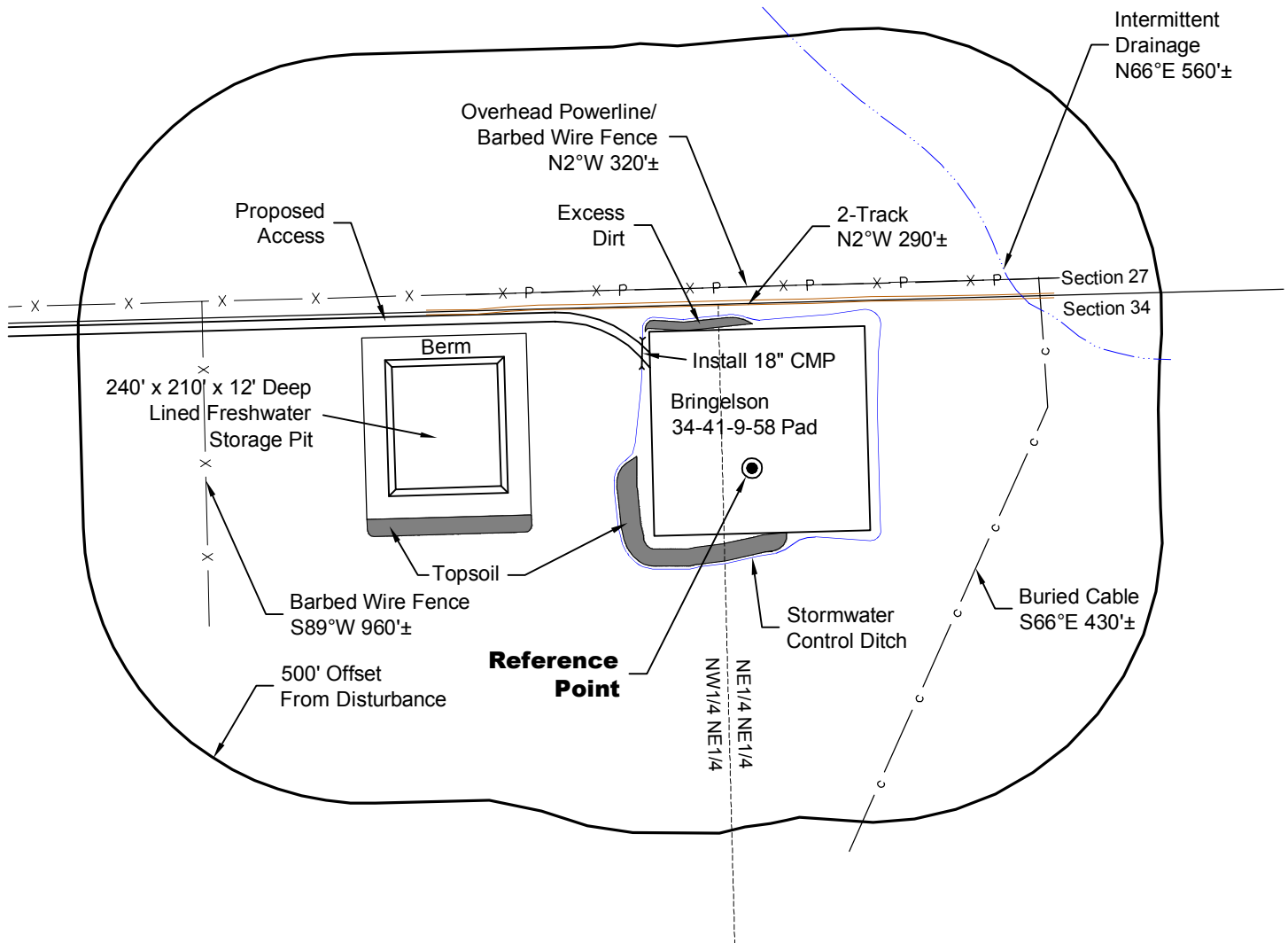
# LOCATION DRAWING

**VEGETATION:**  
DRY LAND PASTURE

**SURFACE USE:**  
GRAZING

## REFERENCE POINT

LATITUDE: 40.71418
LONGITUDE: -103.84488
FOOTAGE: 290 FNL 1263 FEL
GROUND ELEVATION: 4736'
PDOP: 1.8 DATE: 10/28/2012
INSTRUMENT OPERATOR: MARC WOODARD



0 300 600  
Graphic Scale in Feet  
1" = 300'

DISTURBANCE ACREAGE:  
4.5± DRILLING OPERATIONS  
2.0± FRESHWATER STORAGE PIT  
1.0± INTERIM RECLAIM

**NOTE:**  
ALL PRODUCTION FACILITIES WILL BE ON PAD.

11/13/12



LAND SURVEYING AND MAPPING  
LAFAYETTE - WINTER PARK  
Ph 303 666 0379 Fx 303 665 6320

**CARRIZO OIL & GAS, INC**  
**BRINGELSON RANCH 34-41-9-58 PAD**

**NE1/4 NE1/4 SEC. 34 T9N R58W**  
**6th PM WELD COUNTY COLORADO**